

Federal Communications Commission

SHARED TELEVISION BROADCAST STATION LICENSE

Licensee/Permittee

KTLN-TV LLC
 11710 PLAZA AMERICA DRIVE
 SUITE 2000
 RESTON, VA, 20190

Call Sign File Number
 KTLN-TV 0000118933

Facility ID: 49153

NTSC TSID: 4054

Digital TSID: 4055

**This License Covers Construction
 Permit No.**

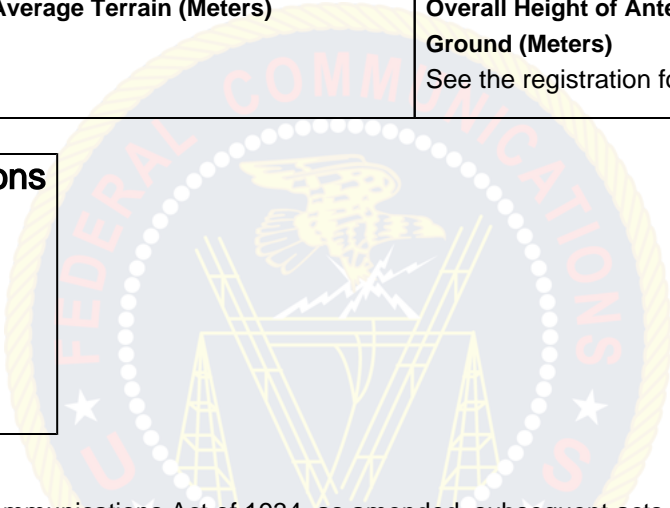
0000034197

Grant Date 07/29/2020	Expiration Date 12/01/2022
Hours of Operation Unlimited	
Station Location City PALO ALTO State CA	Frequency (MHz) 518.0 - 524.0
	Station Channel 22
Facility Type Commercial	Shared Station(s) Facility ID: 37689 Call Sign: KAXT-CD
This authorization reissued to OTA BROADCASTING (SFO), LLC on 07/29/2020. Corrected channel number.	

Antenna Structure Registration Number 1044718	
Transmitter Type Accepted. See Sections 73.1660, 73.1665 and 73.1670 of the Commission's Rules.	Transmitter Output Power(kW) As required to achieve authorized ERP.
Antenna Coordinates Latitude 37-29-57.0 N Longitude 121-52-20.0 W	Antenna Type Directional

Description of Antenna Make DIE Model TUM-C2-2/4M-1 SM	
Antenna Beam Tilt (Degrees Electrical) 4	Antenna Beam Tilt (Degrees Mechanical @ Degrees Azimuth) 0.6@300
Major Lobe Directions 283.0	Maximum Effective Radiated Power (Average) 15 kW 11.76 DBK
Height of Radiated Center Above Ground (Meters) 115.2	Height of Radiated Center Above Mean Sea Level (Meters) 909.5
Height of Radiated Center Above Average Terrain (Meters)	Overall Height of Antenna Structure Above Ground (Meters) See the registration for this antenna structure.

Waivers/Special Conditions



Subject to the provisions of the Communications Act of 1934, as amended, subsequent acts and treaties, and all regulations heretofore or hereafter made by this Commission, and further subject to the conditions set forth in this permit, the permittee is hereby authorized to construct the radio transmitting apparatus herein described. Installation and adjustment of equipment not specifically set forth herein shall be in accordance with representations contained in the permittee's application for construction permit except for such modifications as are presently permitted, without application, by the Commission's Rules.

Equipment and program tests shall be conducted only pursuant to Sections 73.1610 and 73.1620 of the Commission's Rules.