

Federal Communications Commission

NEXT GENERATION TELEVISION BROADCAST STATION LICENSE

Licensee/Permittee

SCRIPPS BROADCASTING HOLDINGS LLC
C/O SCRIPPS MEDIA, INC.
312 WALNUT STREET, 28TH FLOOR
CINCINNATI, OH, 45202

Call Sign	File Number
WTVF	0000115766

Facility ID: 36504

NTSC TSID: 2722

Digital TSID: 2723

This License Modifies License No. 0000090378

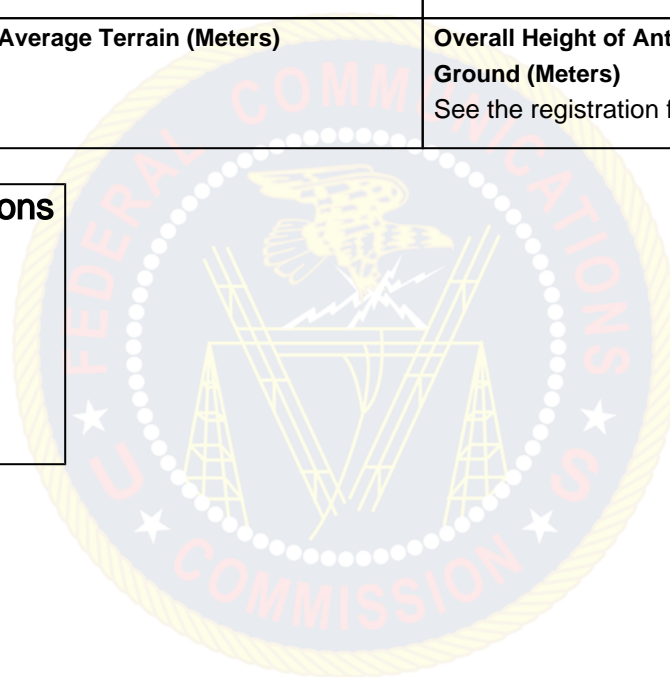
ATSC 3.0

Grant Date 01/27/2010		Expiration Date 08/01/2021	
Hours of Operation Unlimited			
Station Location City NASHVILLE State TN		Frequency (MHz) 512.0 - 518.0	Station Channel 21
Facility Type Commercial			

Antenna Structure Registration Number 1224078	
Transmitter Type Accepted. See Sections 73.1660, 73.1665 and 73.1670 of the Commission's Rules.	Transmitter Output Power(kW) As required to achieve authorized ERP.
Antenna Coordinates Latitude 36-15-49.8 N Longitude 86-47-38.9 W	Antenna Type Directional

Description of Antenna Make DIE Model TFU-24DSC-R C170	
Antenna Beam Tilt (Degrees Electrical) 0.75	Antenna Beam Tilt (Degrees Mechanical @ Degrees Azimuth) Not Applicable
Major Lobe Directions	Maximum Effective Radiated Power (Average) 1000 kW 30.00 DBK
Height of Radiated Center Above Ground (Meters) 352	Height of Radiated Center Above Mean Sea Level (Meters) 595.2
Height of Radiated Center Above Average Terrain (Meters) 413	Overall Height of Antenna Structure Above Ground (Meters) See the registration for this antenna structure.

Waivers/Special Conditions



ATSC 1.0

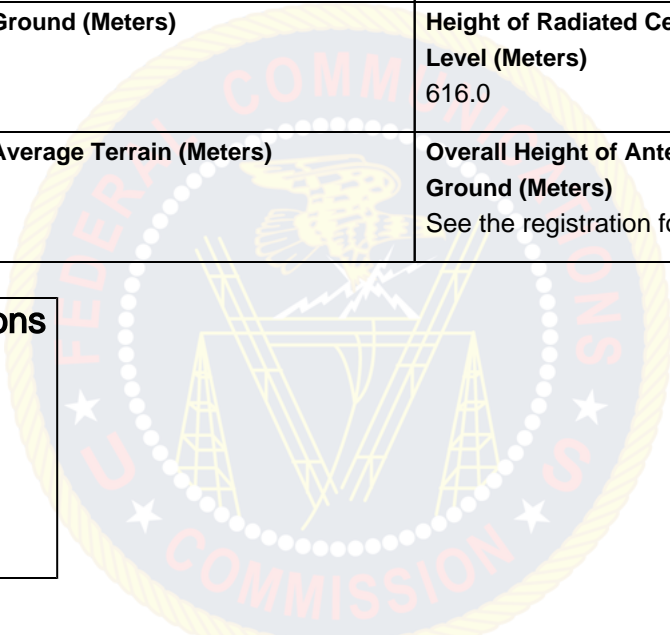
Call Sign	Facility ID
WTVF	36504

Grant Date 06/08/2020	Expiration Date 08/01/2021	
Hours of Operation Unlimited		
Station Location City NASHVILLE State TN	Frequency (MHz) 602.0 - 608.0	Station Channel 36
Facility Type Commercial		

Antenna Structure Registration Number 1041373	
Transmitter Type Accepted. See Sections 73.1660, 73.1665 and 73.1670 of the Commission's Rules.	Transmitter Output Power(kW) As required to achieve authorized ERP.

Antenna Coordinates Latitude 36-16-5.0 N Longitude 86-47-16.0 W	Antenna Type Non-Directional
Description of Antenna Make ERI Model ATW24HS3-ETO-36H	
Antenna Beam Tilt (Degrees Electrical) 0.75	Antenna Beam Tilt (Degrees Mechanical @ Degrees Azimuth) Not Applicable
Major Lobe Directions N/A	Maximum Effective Radiated Power (Average) 1000 kW 30.00 DBK
Height of Radiated Center Above Ground (Meters) 351.1	Height of Radiated Center Above Mean Sea Level (Meters) 616.0
Height of Radiated Center Above Average Terrain (Meters) 431	Overall Height of Antenna Structure Above Ground (Meters) See the registration for this antenna structure.

Waivers/Special Conditions



Subject to the provisions of the Communications Act of 1934, as amended, subsequent acts and treaties, and all regulations heretofore or hereafter made by this Commission, and further subject to the conditions set forth in this permit, the permittee is hereby authorized to construct the radio transmitting apparatus herein described. Installation and adjustment of equipment not specifically set forth herein shall be in accordance with representations contained in the permittee's application for construction permit except for such modifications as are presently permitted, without application, by the Commission's Rules.

Equipment and program tests shall be conducted only pursuant to Sections 73.1610 and 73.1620 of the Commission's Rules.