

Federal Communications Commission

NEXT GENERATION TELEVISION BROADCAST STATION LICENSE

Licensee/Permittee

SCRIPPS BROADCASTING HOLDINGS LLC
312 Walnut Street
28th Floor
Cincinnati, OH, 45202

Call Sign	File Number
KTNV-TV	0000112823

Facility ID: 74100

NTSC TSID: 2084

Digital TSID: 2085

This License Modifies License No.

BMLCDT-20121219AAK

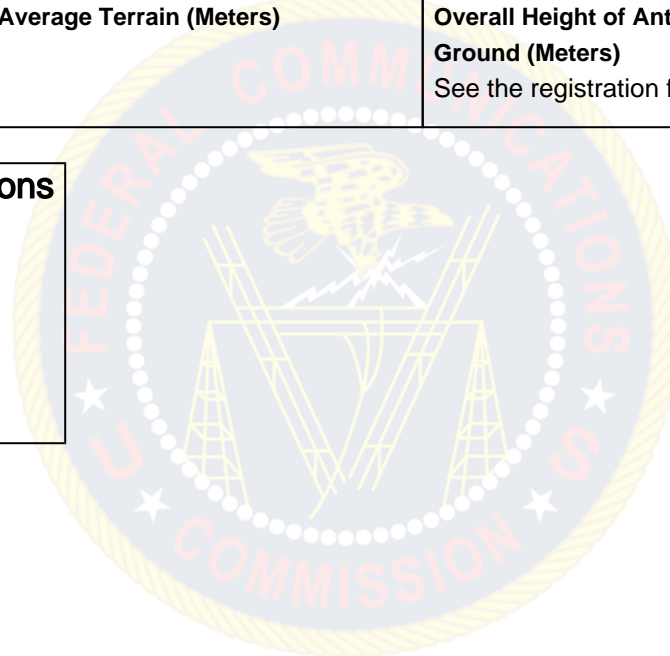
ATSC 3.0

Grant Date 03/08/2007		Expiration Date 10/01/2022	
Hours of Operation Unlimited			
Station Location City LAS VEGAS State NV		Frequency (MHz) 560.0 - 566.0	Station Channel 29
Facility Type Commercial			

Antenna Structure Registration Number 1203429	
Transmitter Type Accepted. See Sections 73.1660, 73.1665 and 73.1670 of the Commission's Rules.	Transmitter Output Power(kW) As required to achieve authorized ERP.
Antenna Coordinates Latitude 36-0-27.3 N Longitude 115-0-26.9 W	Antenna Type Directional

Description of Antenna Make DIE Model TUA-C4-12/48-1-R-T	
Antenna Beam Tilt (Degrees Electrical) 0.8	Antenna Beam Tilt (Degrees Mechanical @ Degrees Azimuth) Not Applicable
Major Lobe Directions	Maximum Effective Radiated Power (Average) 1000 kW 30.00 DBK
Height of Radiated Center Above Ground (Meters) 60.6	Height of Radiated Center Above Mean Sea Level (Meters) 1078.9
Height of Radiated Center Above Average Terrain (Meters) 382.9	Overall Height of Antenna Structure Above Ground (Meters) See the registration for this antenna structure.

Waivers/Special Conditions



ATSC 1.0

Call Sign	Facility ID
KTNV-TV	74100

Grant Date 05/14/2020	Expiration Date 10/01/2022	
Hours of Operation Unlimited		
Station Location City LAS VEGAS State NV	Frequency (MHz) 210.0 - 216.0	Station Channel 13
Facility Type Commercial		

Antenna Structure Registration Number 1011437	
Transmitter Type Accepted. See Sections 73.1660, 73.1665 and 73.1670 of the Commission's Rules.	Transmitter Output Power(kW) As required to achieve authorized ERP.

Antenna Coordinates Latitude 35-56-44.7 N Longitude 115-2-37.6 W	Antenna Type Non-Directional
Description of Antenna Make JAM Model JAT-12/12-13	
Antenna Beam Tilt (Degrees Electrical) 0.75	Antenna Beam Tilt (Degrees Mechanical @ Degrees Azimuth) Not Applicable
Major Lobe Directions N/A	Maximum Effective Radiated Power (Average) 30.5 kW 14.84 DBK
Height of Radiated Center Above Ground (Meters) 67.7	Height of Radiated Center Above Mean Sea Level (Meters) 1389.0
Height of Radiated Center Above Average Terrain (Meters) 606	Overall Height of Antenna Structure Above Ground (Meters) See the registration for this antenna structure.

Waivers/Special Conditions

Subject to the provisions of the Communications Act of 1934, as amended, subsequent acts and treaties, and all regulations heretofore or hereafter made by this Commission, and further subject to the conditions set forth in this permit, the permittee is hereby authorized to construct the radio transmitting apparatus herein described. Installation and adjustment of equipment not specifically set forth herein shall be in accordance with representations contained in the permittee's application for construction permit except for such modifications as are presently permitted, without application, by the Commission's Rules.

Equipment and program tests shall be conducted only pursuant to Sections 73.1610 and 73.1620 of the Commission's Rules.