

Federal Communications Commission

NEXT GENERATION TELEVISION BROADCAST STATION LICENSE

Licensee/Permittee

DEERFIELD MEDIA (MOBILE) LICENSEE, LLC
 1776 Park Ave
 4-135
 Park City, UT, 84060

Call Sign	File Number
WPMI-TV	0000120999

Facility ID: 11906

NTSC TSID: 94

Digital TSID: 95

This License Modifies License No. BLCDT-20090618ABA

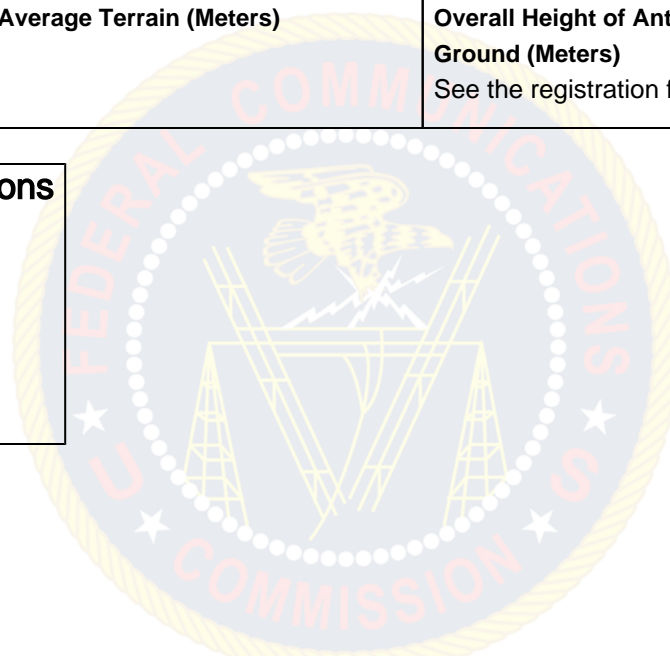
ATSC 3.0

Grant Date 09/17/2020		Expiration Date 04/01/2021	
Hours of Operation Unlimited			
Station Location City MOBILE State AL		Frequency (MHz) 476.0 - 482.0	Station Channel 15
Facility Type Commercial			

Antenna Structure Registration Number 1064671	
Transmitter Type Accepted. See Sections 73.1660, 73.1665 and 73.1670 of the Commission's Rules.	Transmitter Output Power(kW) As required to achieve authorized ERP.
Antenna Coordinates Latitude 30-36-41.0 N Longitude 87-36-26.4 W	Antenna Type Directional

Description of Antenna Make ERI Model ATW-P3	
Antenna Beam Tilt (Degrees Electrical) 0.75	Antenna Beam Tilt (Degrees Mechanical @ Degrees Azimuth) Not Applicable
Major Lobe Directions 100.0 280.0	Maximum Effective Radiated Power (Average) 1000 kW 30.00 DBK
Height of Radiated Center Above Ground (Meters) 563	Height of Radiated Center Above Mean Sea Level (Meters) 595.3
Height of Radiated Center Above Average Terrain (Meters) 563	Overall Height of Antenna Structure Above Ground (Meters) See the registration for this antenna structure.

Waivers/Special Conditions



ATSC 1.0

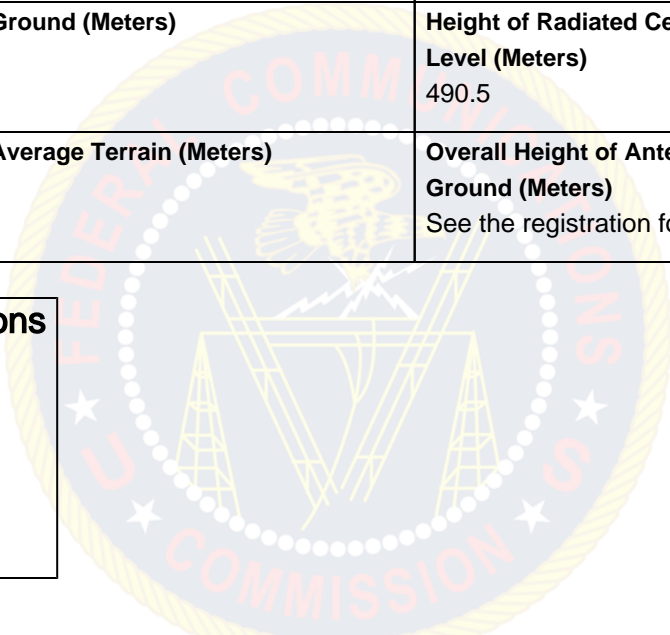
Call Sign	Facility ID
WPML-TV	11906

Grant Date 09/17/2020	Expiration Date 04/01/2021	
Hours of Operation Unlimited		
Station Location City PENSACOLA State FL	Frequency (MHz) 596.0 - 602.0	Station Channel 35
Facility Type Commercial		

Antenna Structure Registration Number 1030889	
Transmitter Type Accepted. See Sections 73.1660, 73.1665 and 73.1670 of the Commission's Rules.	Transmitter Output Power(kW) As required to achieve authorized ERP.

Antenna Coordinates Latitude 30-35-16.7 N Longitude 87-33-12.7 W	Antenna Type Directional
Description of Antenna Make DIELECTRIC Model TFU-18ETT/VP-R 4C160	
Antenna Beam Tilt (Degrees Electrical) 0.75	Antenna Beam Tilt (Degrees Mechanical @ Degrees Azimuth) Not Applicable
Major Lobe Directions 104.0	Maximum Effective Radiated Power (Average) 1000 kW 30.00 DBK
Height of Radiated Center Above Ground (Meters) 449	Height of Radiated Center Above Mean Sea Level (Meters) 490.5
Height of Radiated Center Above Average Terrain (Meters) 457	Overall Height of Antenna Structure Above Ground (Meters) See the registration for this antenna structure.

Waivers/Special Conditions



Subject to the provisions of the Communications Act of 1934, as amended, subsequent acts and treaties, and all regulations heretofore or hereafter made by this Commission, and further subject to the conditions set forth in this permit, the permittee is hereby authorized to construct the radio transmitting apparatus herein described. Installation and adjustment of equipment not specifically set forth herein shall be in accordance with representations contained in the permittee's application for construction permit except for such modifications as are presently permitted, without application, by the Commission's Rules.

Equipment and program tests shall be conducted only pursuant to Sections 73.1610 and 73.1620 of the Commission's Rules.