

Federal Communications Commission

NEXT GENERATION TELEVISION BROADCAST STATION LICENSE

Licensee/Permittee

NEXSTAR BROADCASTING, INC.
545 E. John Carpenter Freeway
Suite 700
Irving, TX, 75062

Call Sign	File Number
WKRN-TV	0000115874

Facility ID: 73188

NTSC TSID: 2718

Digital TSID: 2719

This License Modifies License No. BLCDT-20090624ABO

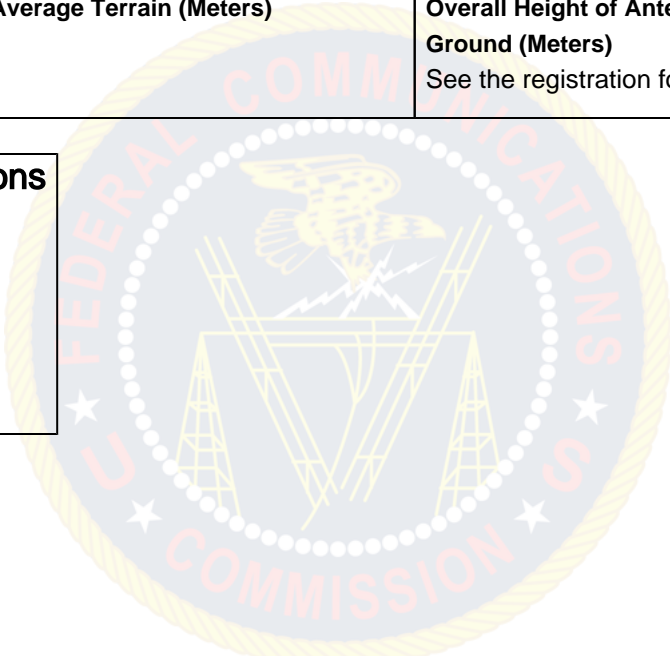
ATSC 3.0

Grant Date 05/26/2020		Expiration Date 08/01/2021	
Hours of Operation Unlimited			
Station Location City NASHVILLE State TN		Frequency (MHz) 566.0 - 572.0	Station Channel 30
Facility Type Commercial			

Antenna Structure Registration Number 1224078	
Transmitter Type Accepted. See Sections 73.1660, 73.1665 and 73.1670 of the Commission's Rules.	Transmitter Output Power(kW) As required to achieve authorized ERP.
Antenna Coordinates Latitude 36-15-49.8 N Longitude 86-47-38.9 W	Antenna Type Directional

Description of Antenna Make Dielectric Model TFU-28DSC/VP-R C180	
Antenna Beam Tilt (Degrees Electrical) 0.75	Antenna Beam Tilt (Degrees Mechanical @ Degrees Azimuth) Not Applicable
Major Lobe Directions 180.0 190.0	Maximum Effective Radiated Power (Average) 510 kW 27.08 DBK
Height of Radiated Center Above Ground (Meters) 350	Height of Radiated Center Above Mean Sea Level (Meters) 593.2
Height of Radiated Center Above Average Terrain (Meters) 411	Overall Height of Antenna Structure Above Ground (Meters) See the registration for this antenna structure.

Waivers/Special Conditions



ATSC 1.0

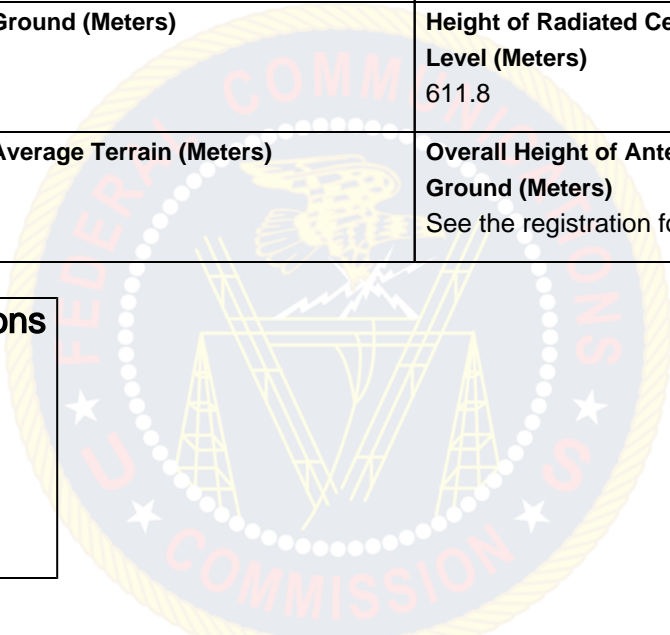
Call Sign	Facility ID
WKRN-TV	73188

Grant Date 06/10/2020	Expiration Date 08/01/2021	
Hours of Operation Unlimited		
Station Location City NASHVILLE State TN	Frequency (MHz) 548.0 - 554.0	Station Channel 27
Facility Type Commercial		

Antenna Structure Registration Number 1058822	
Transmitter Type Accepted. See Sections 73.1660, 73.1665 and 73.1670 of the Commission's Rules.	Transmitter Output Power(kW) As required to achieve authorized ERP.

Antenna Coordinates Latitude 36-2-50.0 N Longitude 86-49-49.0 W	Antenna Type Non-Directional
Description of Antenna Make DIE Model TUA-04-15/60H-1-T	
Antenna Beam Tilt (Degrees Electrical) 0.75	Antenna Beam Tilt (Degrees Mechanical @ Degrees Azimuth) Not Applicable
Major Lobe Directions N/A	Maximum Effective Radiated Power (Average) 1000 kW 30.00 DBK
Height of Radiated Center Above Ground (Meters) 275	Height of Radiated Center Above Mean Sea Level (Meters) 611.8
Height of Radiated Center Above Average Terrain (Meters) 411	Overall Height of Antenna Structure Above Ground (Meters) See the registration for this antenna structure.

Waivers/Special Conditions



Subject to the provisions of the Communications Act of 1934, as amended, subsequent acts and treaties, and all regulations heretofore or hereafter made by this Commission, and further subject to the conditions set forth in this permit, the permittee is hereby authorized to construct the radio transmitting apparatus herein described. Installation and adjustment of equipment not specifically set forth herein shall be in accordance with representations contained in the permittee's application for construction permit except for such modifications as are presently permitted, without application, by the Commission's Rules.

Equipment and program tests shall be conducted only pursuant to Sections 73.1610 and 73.1620 of the Commission's Rules.