

Federal Communications Commission

NEXT GENERATION TELEVISION BROADCAST STATION LICENSE

Licensee/Permittee

NEXSTAR BROADCASTING, INC.
545 E. John Carpenter Freeway
SUITE 700
Irving, TX, 75062

Call Sign	File Number
KUCW	0000114064

Facility ID: 1136

NTSC TSID: 2992

Digital TSID: 2993

This License Modifies License No. 0000068648

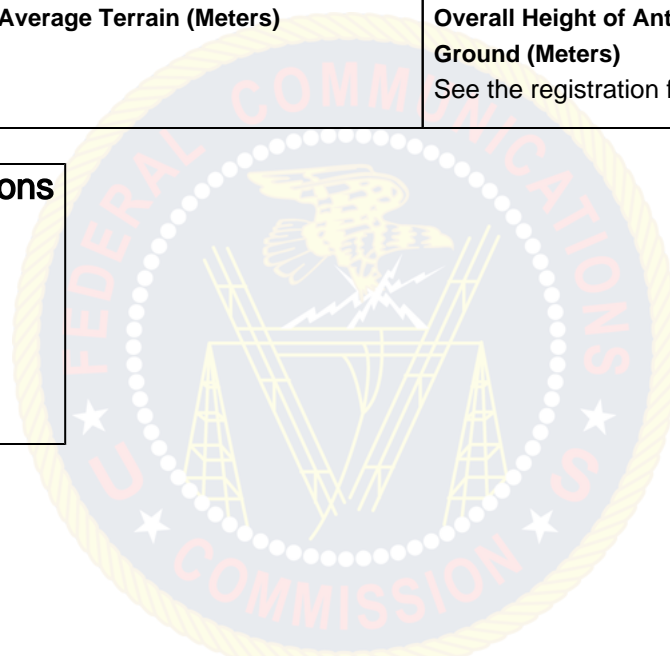
ATSC 3.0

Grant Date 12/09/2019		Expiration Date 10/01/2022	
Hours of Operation Unlimited			
Station Location City SALT LAKE CITY State UT		Frequency (MHz) 500.0 - 506.0	Station Channel 19
Facility Type Commercial			

Antenna Structure Registration Number 1062408	
Transmitter Type Accepted. See Sections 73.1660, 73.1665 and 73.1670 of the Commission's Rules.	Transmitter Output Power(kW) As required to achieve authorized ERP.
Antenna Coordinates Latitude 40-39-33.0 N Longitude 112-12-10.0 W	Antenna Type Directional

Description of Antenna Make KATHREIN Model 759.25063	
Antenna Beam Tilt (Degrees Electrical) 1.8	Antenna Beam Tilt (Degrees Mechanical @ Degrees Azimuth) Not Applicable
Major Lobe Directions 270.0	Maximum Effective Radiated Power (Average) 312 kW 24.94 DBK
Height of Radiated Center Above Ground (Meters) 79.8	Height of Radiated Center Above Mean Sea Level (Meters) 2833.8
Height of Radiated Center Above Average Terrain (Meters) 1258.8	Overall Height of Antenna Structure Above Ground (Meters) See the registration for this antenna structure.

Waivers/Special Conditions



ATSC 1.0

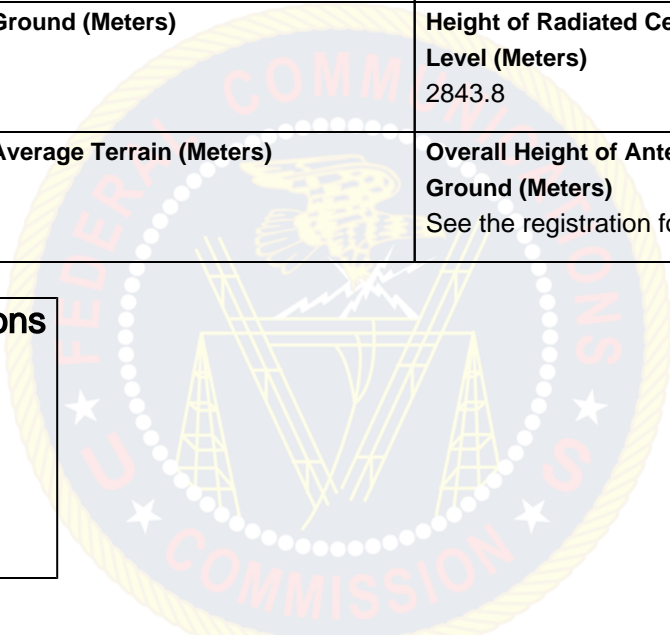
Call Sign	Facility ID
KUCW	1136

Grant Date 06/02/2020		Expiration Date 10/01/2022	
Hours of Operation Unlimited			
Station Location City OGDEN State UT	Frequency (MHz) 596.0 - 602.0		Station Channel 35
Facility Type Commercial			

Antenna Structure Registration Number 1062408	
Transmitter Type Accepted. See Sections 73.1660, 73.1665 and 73.1670 of the Commission's Rules.	Transmitter Output Power(kW) As required to achieve authorized ERP.

Antenna Coordinates Latitude 40-39-33.0 N Longitude 112-12-10.0 W	Antenna Type Directional
Description of Antenna Make KAT Model 759 25063	
Antenna Beam Tilt (Degrees Electrical) 1.7	Antenna Beam Tilt (Degrees Mechanical @ Degrees Azimuth) Not Applicable
Major Lobe Directions 256.0	Maximum Effective Radiated Power (Average) 432 kW 26.35 DBK
Height of Radiated Center Above Ground (Meters) 89.8	Height of Radiated Center Above Mean Sea Level (Meters) 2843.8
Height of Radiated Center Above Average Terrain (Meters) 1259.3	Overall Height of Antenna Structure Above Ground (Meters) See the registration for this antenna structure.

Waivers/Special Conditions



Subject to the provisions of the Communications Act of 1934, as amended, subsequent acts and treaties, and all regulations heretofore or hereafter made by this Commission, and further subject to the conditions set forth in this permit, the permittee is hereby authorized to construct the radio transmitting apparatus herein described. Installation and adjustment of equipment not specifically set forth herein shall be in accordance with representations contained in the permittee's application for construction permit except for such modifications as are presently permitted, without application, by the Commission's Rules.

Equipment and program tests shall be conducted only pursuant to Sections 73.1610 and 73.1620 of the Commission's Rules.