

# Federal Communications Commission

## NEXT GENERATION TELEVISION BROADCAST STATION LICENSE

**Licensee/Permittee**

SCRIPPS BROADCASTING HOLDINGS LLC  
312 Walnut Street  
28th Floor  
Cincinnati, OH, 45202

Call Sign	File Number
KASW	0000106570

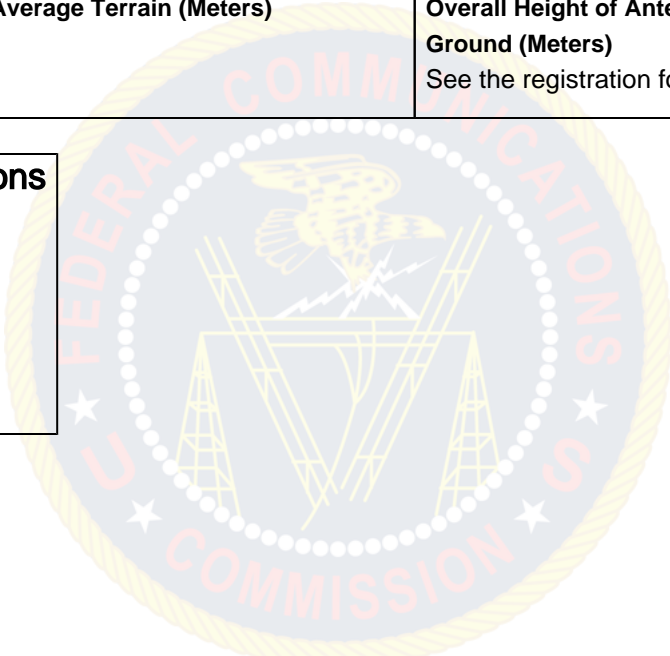
**Facility ID:** 7143**NTSC TSID:** 202**Digital TSID:** 203**This License Modifies License No.** 0000067495**ATSC 3.0**

<b>Grant Date</b> 03/13/2020	<b>Expiration Date</b> 10/01/2022	
<b>Hours of Operation</b> Unlimited		
<b>Station Location</b> City PHOENIX State AZ	<b>Frequency (MHz)</b> 548.0 - 554.0	<b>Station Channel</b> 27
<b>Facility Type</b> Commercial		

<b>Antenna Structure Registration Number</b> 1002069	
<b>Transmitter</b> Type Accepted. See Sections 73.1660, 73.1665 and 73.1670 of the Commission's Rules.	<b>Transmitter Output Power(kW)</b> As required to achieve authorized ERP.
<b>Antenna Coordinates</b> Latitude 33-20-1.0 N Longitude 112-3-47.0 W	<b>Antenna Type</b> Directional

<b>Description of Antenna</b> Make Dielectric Model TFU-17ETT/VP-R 4C190	
<b>Antenna Beam Tilt (Degrees Electrical)</b> 0.95	<b>Antenna Beam Tilt (Degrees Mechanical @ Degrees Azimuth)</b> Not Applicable
<b>Major Lobe Directions</b> 55.0	<b>Maximum Effective Radiated Power (Average)</b> 445 kW 26.48 DBK
<b>Height of Radiated Center Above Ground (Meters)</b> 98.5	<b>Height of Radiated Center Above Mean Sea Level (Meters)</b> 908.5
<b>Height of Radiated Center Above Average Terrain (Meters)</b> 550.9	<b>Overall Height of Antenna Structure Above Ground (Meters)</b> See the registration for this antenna structure.

**Waivers/Special Conditions**



**ATSC 1.0**

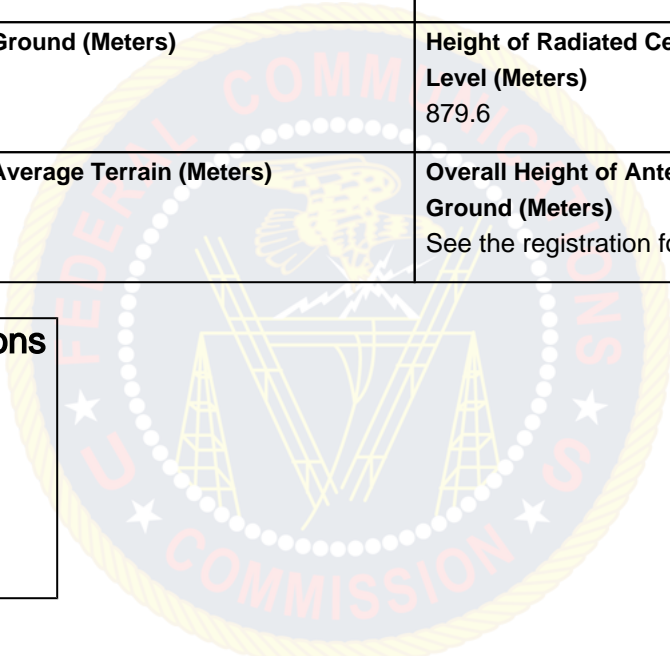
<b>Call Sign</b>	<b>Facility ID</b>
KNXV-TV	59440

<b>Grant Date</b> 07/13/2010	<b>Expiration Date</b> 10/01/2022	
<b>Hours of Operation</b> Unlimited		
<b>Station Location</b> City PHOENIX State AZ	<b>Frequency (MHz)</b> 476.0 - 482.0	<b>Station Channel</b> 15
<b>Facility Type</b> Commercial		

<b>Antenna Structure Registration Number</b> 1065157	
<b>Transmitter</b> Type Accepted. See Sections 73.1660, 73.1665 and 73.1670 of the Commission's Rules.	<b>Transmitter Output Power(kW)</b> As required to achieve authorized ERP.

<b>Antenna Coordinates</b> Latitude 33-20-0.0 N Longitude 112-3-49.0 W	<b>Antenna Type</b> Non-Directional
<b>Description of Antenna</b> Make DIE Model TFU-20GTH/VP 04	
<b>Antenna Beam Tilt (Degrees Electrical)</b> 0.75	<b>Antenna Beam Tilt (Degrees Mechanical @ Degrees Azimuth)</b> Not Applicable
<b>Major Lobe Directions</b> N/A	<b>Maximum Effective Radiated Power (Average)</b> 458 kW 26.61 DBK
<b>Height of Radiated Center Above Ground (Meters)</b> 78	<b>Height of Radiated Center Above Mean Sea Level (Meters)</b> 879.6
<b>Height of Radiated Center Above Average Terrain (Meters)</b> 521	<b>Overall Height of Antenna Structure Above Ground (Meters)</b> See the registration for this antenna structure.

**Waivers/Special Conditions**



Subject to the provisions of the Communications Act of 1934, as amended, subsequent acts and treaties, and all regulations heretofore or hereafter made by this Commission, and further subject to the conditions set forth in this permit, the permittee is hereby authorized to construct the radio transmitting apparatus herein described. Installation and adjustment of equipment not specifically set forth herein shall be in accordance with representations contained in the permittee's application for construction permit except for such modifications as are presently permitted, without application, by the Commission's Rules.

Equipment and program tests shall be conducted only pursuant to Sections 73.1610 and 73.1620 of the Commission's Rules.