

# Federal Communications Commission

## SHARED TELEVISION BROADCAST STATION CONSTRUCTION PERMIT

**Licensee/Permittee**

NEXSTAR BROADCASTING, INC.  
545 E. John Carpenter Freeway  
Suite 700  
Irving, TX, 75062

**Call Sign** File Number  
WLNS-TV 0000035431

**Facility ID:** 74420

**NTSC TSID:** 1526

**Digital TSID:** 1527

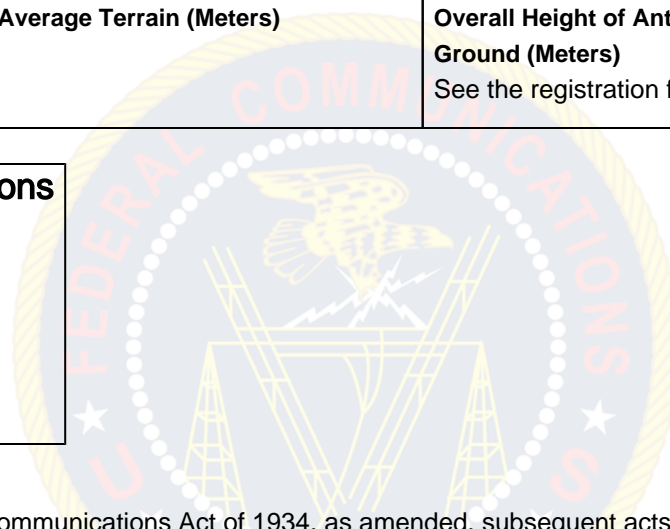
**This Permit Modifies License File No.:** BLCDT-20090720ADT

<b>Grant Date</b> 12/19/2017	<b>Expiration Date</b> 04/23/2018	
<b>Hours of Operation</b> Unlimited		
<b>Station Location</b> City LANSING State MI	<b>Frequency (MHz)</b> 536.0 - 542.0	<b>Station Channel</b> 25
<b>Facility Type</b> Commercial	<b>Shared Station(s)</b>  Facility ID: 36533 Call Sign: WLAJ	

<b>Antenna Structure Registration Number</b> 1027514	
<b>Transmitter</b> Type Accepted. See Sections 73.1660, 73.1665 and 73.1670 of the Commission's Rules.	<b>Transmitter Output Power(kW)</b> As required to achieve authorized ERP.
<b>Antenna Coordinates</b> Latitude 42-25-13.0 N Longitude 84-31-25.0 W	<b>Antenna Type</b> Directional

<b>Description of Antenna</b> Make DIE Model TUF-C4-10/40H-1-T	
<b>Antenna Beam Tilt (Degrees Electrical)</b> 0.70	<b>Antenna Beam Tilt (Degrees Mechanical @ Degrees Azimuth)</b> Not Applicable
<b>Major Lobe Directions</b> 180.0	<b>Maximum Effective Radiated Power (Average)</b> 483.3 kW 26.84 DBK
<b>Height of Radiated Center Above Ground (Meters)</b> 302.0	<b>Height of Radiated Center Above Mean Sea Level (Meters)</b> 588.5
<b>Height of Radiated Center Above Average Terrain (Meters)</b> 300.0	<b>Overall Height of Antenna Structure Above Ground (Meters)</b> See the registration for this antenna structure.

**Waivers/Special Conditions**



Subject to the provisions of the Communications Act of 1934, as amended, subsequent acts and treaties, and all regulations heretofore or hereafter made by this Commission, and further subject to the conditions set forth in this permit, the permittee is hereby authorized to construct the radio transmitting apparatus herein described. Installation and adjustment of equipment not specifically set forth herein shall be in accordance with representations contained in the permittee's application for construction permit except for such modifications as are presently permitted, without application, by the Commission's Rules.

Equipment and program tests shall be conducted only pursuant to Sections 73.1610 and 73.1620 of the Commission's Rules.