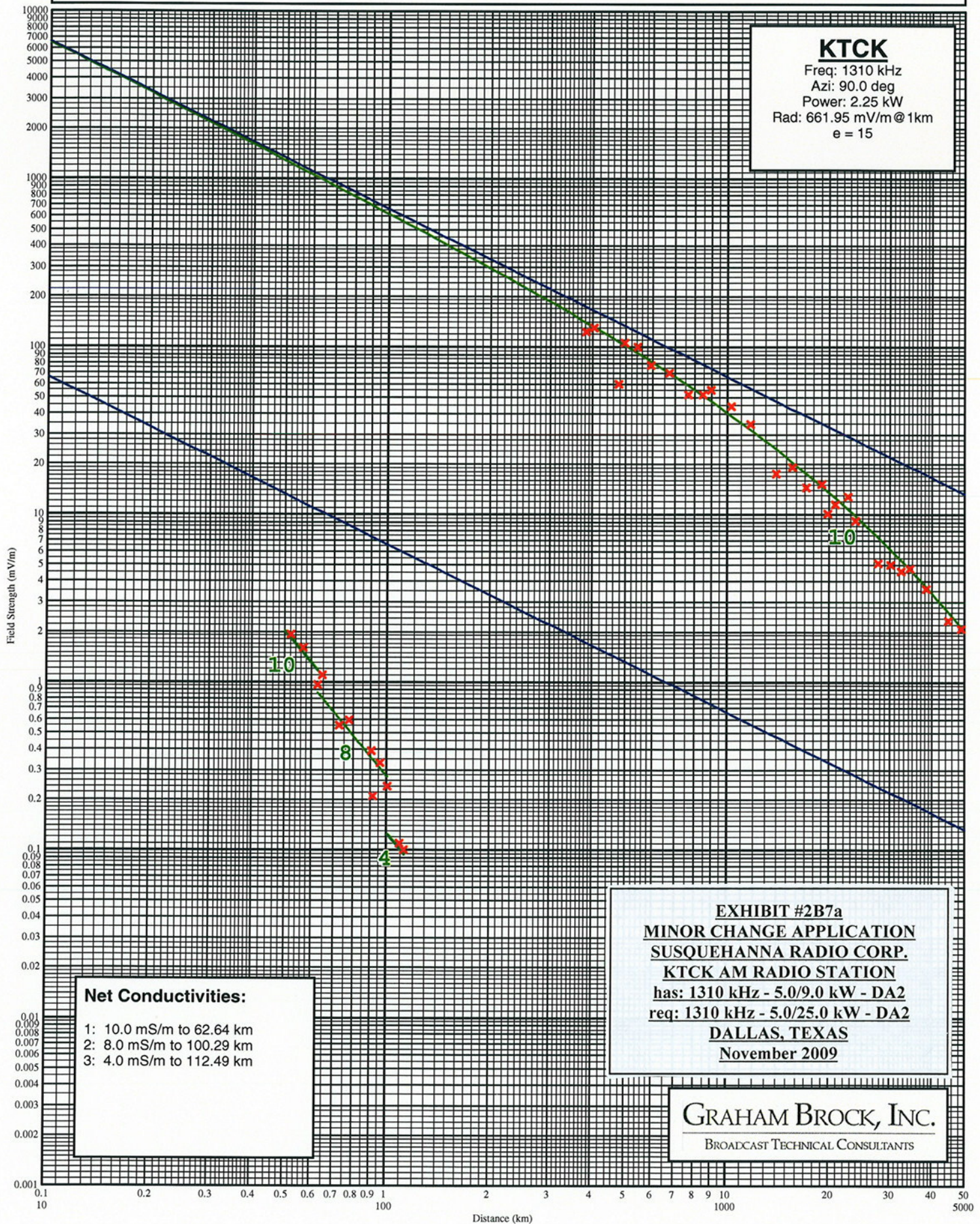


KTCK AM Measured Field Strength

Shown With Matching Conductivity Curves



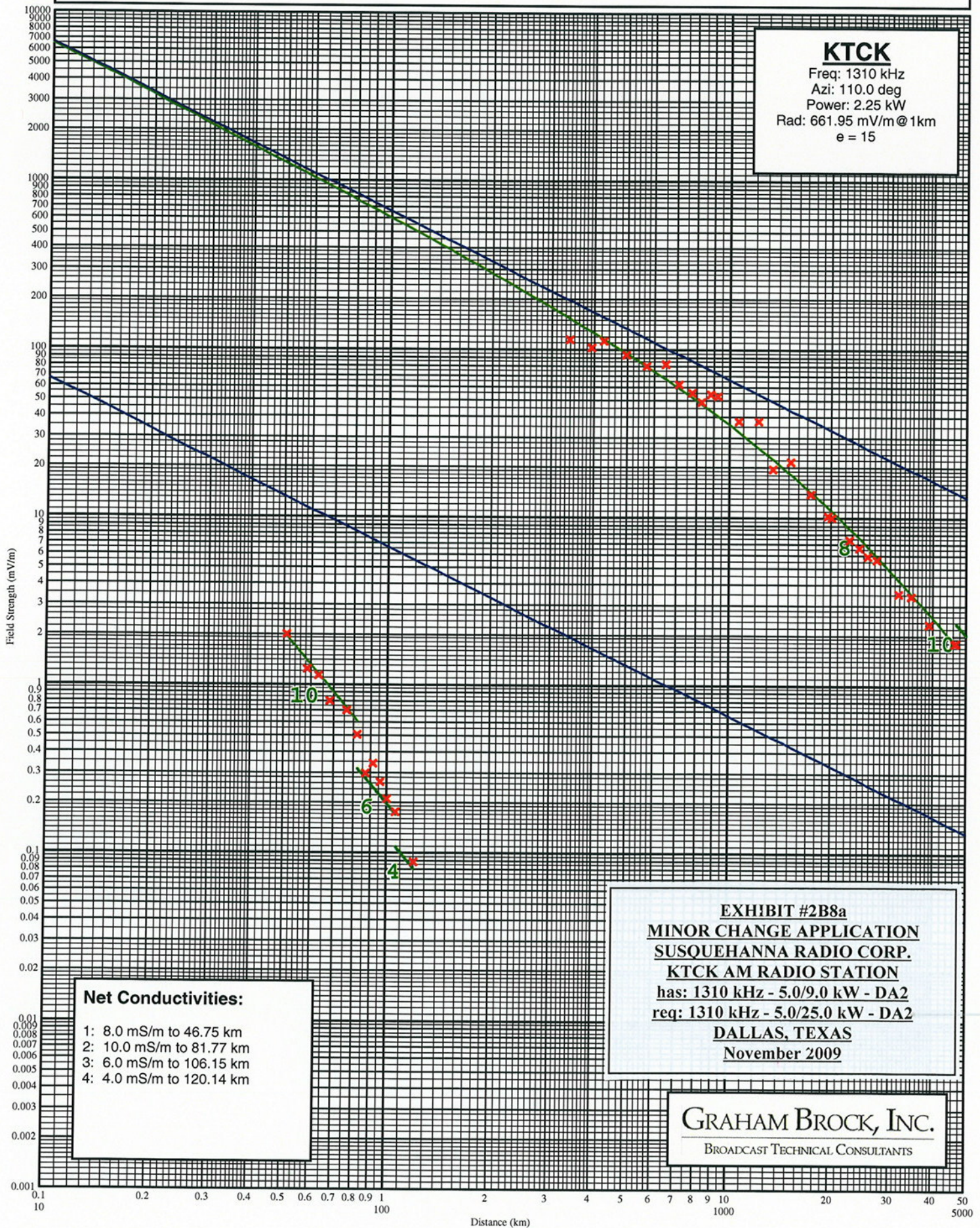
Measurements for 90.0 degrees.

Point Number	Distance (km) (mi)		Field (mV/m)	Notes	Date	Time
-----	----	----	-----	-----	-----	----
1	3.81	2.37	123.000		8/13/2009	0954
2	4.02	2.50	130.000		8/13/2009	1003
3	4.75	2.95	60.000		8/13/2009	1009
4	4.96	3.08	105.000		8/13/2009	1013
5	5.42	3.37	100.000		8/13/2009	1019
6	5.94	3.69	78.000		8/13/2009	1023
7	6.71	4.17	70.000		8/13/2009	1029
8	7.64	4.75	52.000		8/13/2009	1049
9	8.43	5.24	52.000		8/13/2009	1100
10	8.96	5.57	55.000		8/13/2009	1108
11	10.27	6.38	44.000		8/13/2009	1115
12	11.72	7.28	34.500		8/13/2009	1130
13	13.97	8.68	17.500		8/13/2009	1145
14	15.61	9.70	19.200		8/13/2009	1154
15	17.11	10.63	14.500		8/13/2009	1202
16	19.01	11.81	15.100		7/9/2009	1520
17	19.79	12.30	10.100		7/9/2009	1514
18	20.76	12.90	11.500		7/9/2009	1508
19	22.58	14.03	12.800		7/9/2009	1501
20	23.79	14.78	9.200		7/9/2009	1454
21	27.73	17.23	5.120		7/9/2009	1443
22	30.13	18.72	5.010		7/9/2009	1435
23	32.43	20.15	4.610		7/9/2009	1426
24	34.38	21.36	4.770		7/9/2009	1420
25	38.33	23.82	3.600		7/9/2009	1410
26	44.79	27.83	2.330		7/9/2009	1346
27	48.81	30.33	2.080		7/9/2009	1336
28	51.90	32.25	1.920		7/9/2009	1325
29	56.58	35.16	1.610		7/9/2009	1311
30	62.64	38.92	0.960		7/9/2009	1249
31	64.39	40.01	1.100		7/9/2009	1242
32	72.52	45.06	0.550		7/9/2009	1220
33	77.67	48.26	0.590		7/9/2009	1205
34	90.16	56.02	0.390		7/9/2009	1130
35	91.07	56.59	0.210		7/9/2009	1124
36	95.66	59.44	0.330		7/9/2009	1110
37	100.29	62.32	0.240		7/9/2009	1055
38	109.08	67.78	0.110		7/9/2009	1036
39	112.49	69.90	0.100		7/9/2009	1021

EXHIBIT #2B7b
MINOR CHANGE APPLICATION
SUSQUEHANNA RADIO CORP.
KTCK AM RADIO STATION
has: 1310 kHz - 5.0/9.0 kW - DA2
req: 1310 kHz - 5.0/25.0 kW - DA2
DALLAS, TEXAS
November 2009

KTCK AM Measured Field Strength

Shown With Matching Conductivity Curves

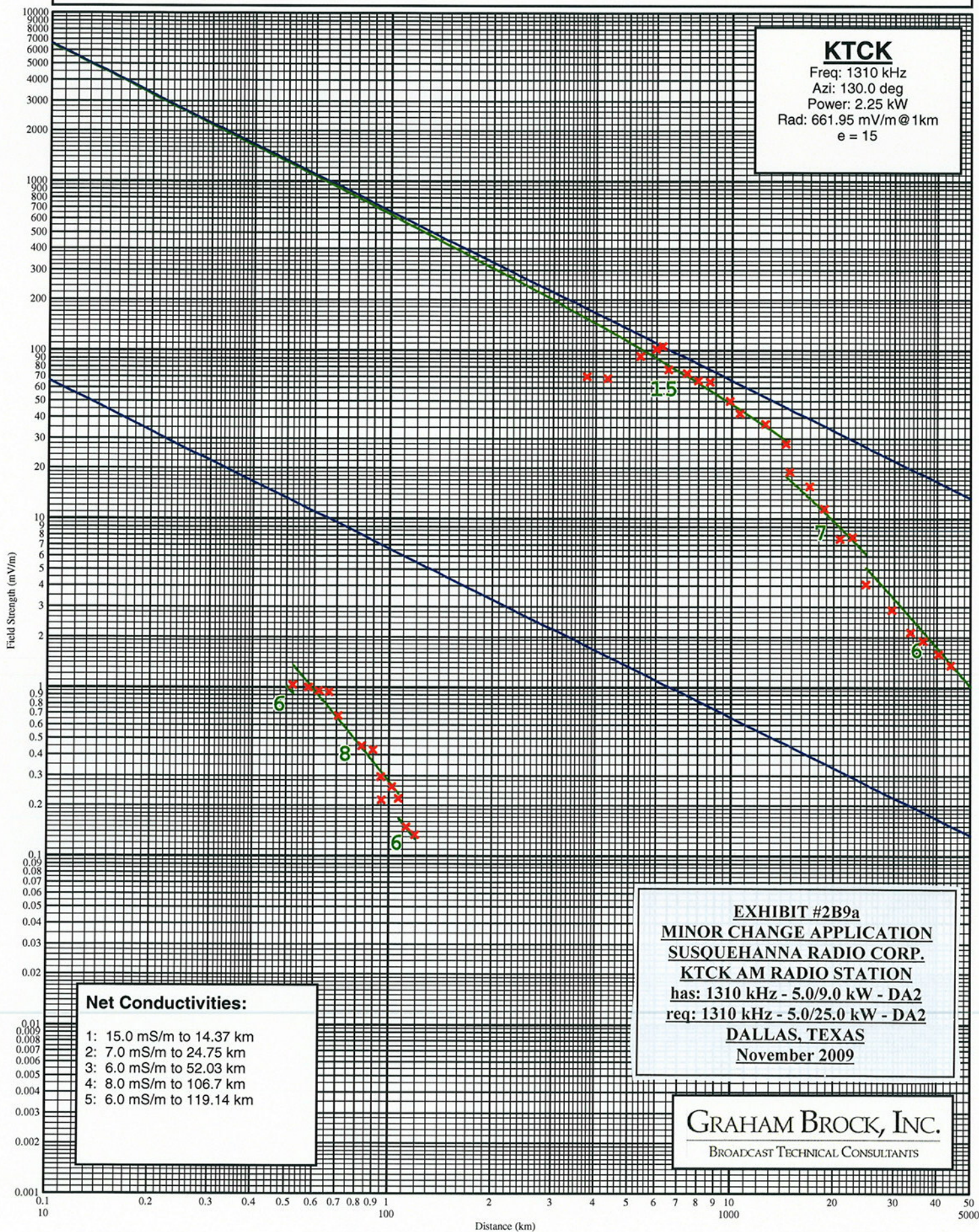


Measurements for 110.0 degrees.

Point Number	Distance (km) (mi)		Field (mV/m)	Notes	Date	Time
-----	-----	-----	-----	-----	-----	-----
1	3.38	2.10	114.000		8/13/2009	1416
2	3.93	2.44	103.000		8/13/2009	1411
3	4.25	2.64	112.000		8/13/2009	1405
4	4.96	3.08	93.000		8/13/2009	1400
5	5.68	3.53	80.000		8/13/2009	1352
6	6.49	4.03	82.000		8/13/2009	1324
7	7.10	4.41	62.000		8/13/2009	1317
8	7.76	4.82	55.000		8/13/2009	1312
9	8.27	5.14	48.500		8/13/2009	1303
10	8.80	5.47	54.000		8/13/2009	1257
11	9.25	5.75	53.000		8/13/2009	1250
12	10.65	6.62	37.500		8/13/2009	1241
13	12.20	7.58	37.500		8/13/2009	1233
14	13.45	8.36	19.500		8/13/2009	1227
15	15.16	9.42	21.500		8/13/2009	1216
16	17.36	10.79	13.800		7/10/2009	1506
17	19.52	12.13	10.300		7/10/2009	1454
18	20.08	12.48	10.000		7/10/2009	1449
19	22.60	14.04	7.420		7/10/2009	1440
20	24.19	15.03	6.620		7/10/2009	1433
21	25.60	15.91	5.900		7/10/2009	1427
22	27.34	16.99	5.660		7/10/2009	1421
23	31.72	19.71	3.550		7/10/2009	1407
24	34.54	21.46	3.410		7/10/2009	1356
25	38.93	24.19	2.310		7/10/2009	1346
26	46.40	28.83	1.790		7/10/2009	1325
27	46.75	29.05	1.800		7/10/2009	1321
28	50.84	31.59	1.990		7/10/2009	1312
29	58.35	36.26	1.240		7/10/2009	1252
30	63.20	39.27	1.130		7/10/2009	1242
31	67.93	42.21	0.795		7/10/2009	1209
32	76.23	47.37	0.700		7/10/2009	1158
33	81.77	50.81	0.505		7/10/2009	1147
34	86.70	53.87	0.298		7/10/2009	1127
35	91.23	56.69	0.340		7/10/2009	1107
36	95.50	59.34	0.265		7/10/2009	1054
37	100.05	62.17	0.209		7/10/2009	1046
38	106.15	65.96	0.175		7/10/2009	1030
39	120.14	74.65	0.088		7/10/2009	1007

KTCK AM Measured Field Strength

Shown With Matching Conductivity Curves



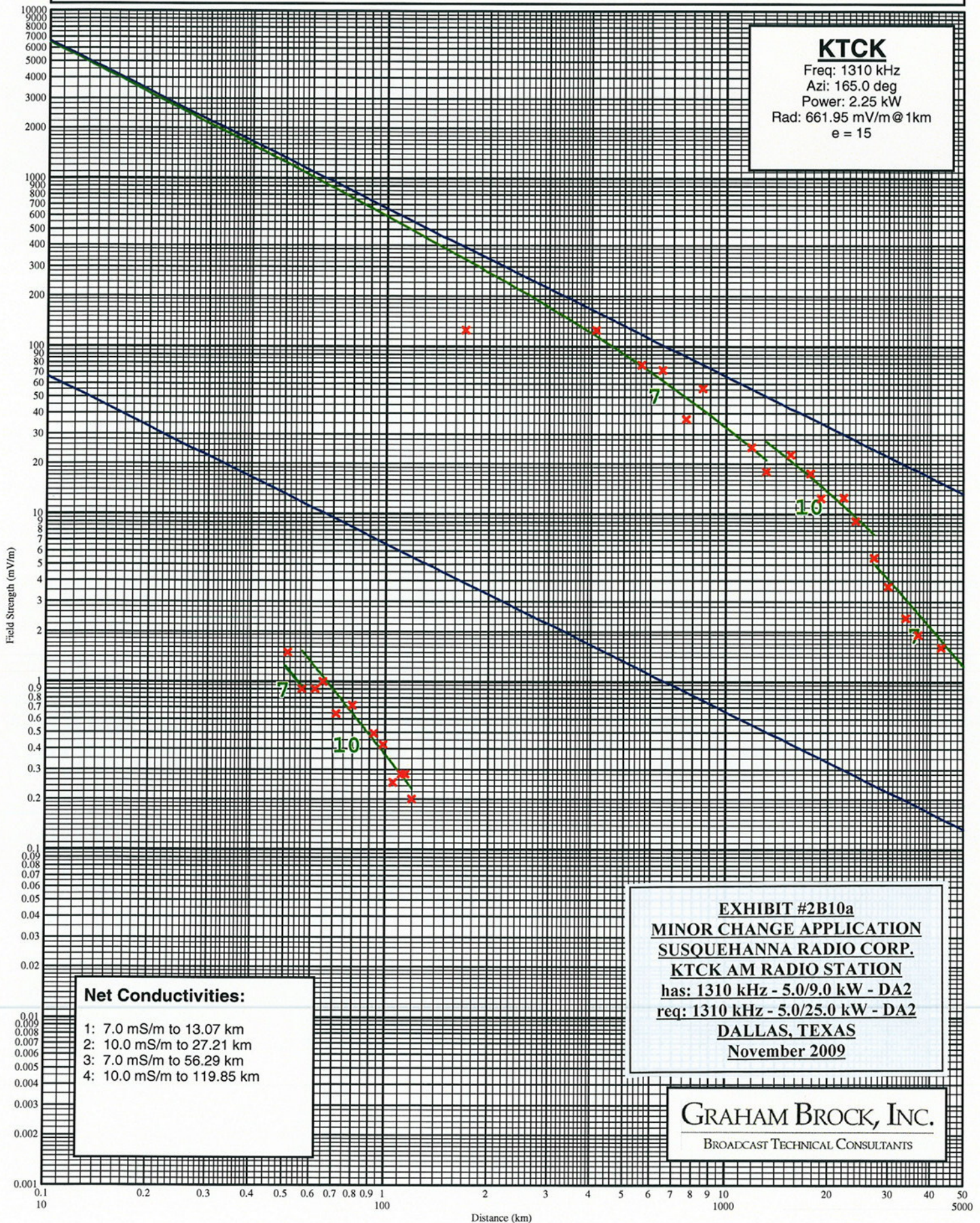
Measurements for 130.0 degrees.

Point Number	Distance (km)	(mi)	Field (mV/m)	Notes	Date	Time
-----	----	----	-----	-----	-----	----
1	3.75	2.33	70.000		8/13/2009	1423
2	4.31	2.68	68.000		8/13/2009	1430
3	5.36	3.33	92.000		8/13/2009	1438
4	5.99	3.72	102.000		8/13/2009	1450
5	6.26	3.89	105.000		8/13/2009	1456
6	6.50	4.04	77.000		8/13/2009	1505
7	7.39	4.59	73.000		8/13/2009	1508
8	7.95	4.94	66.000		8/13/2009	1513
9	8.63	5.36	65.000		8/13/2009	1520
10	9.87	6.13	50.000		8/13/2009	1530
11	10.56	6.56	42.000		8/13/2009	1535
12	12.50	7.77	36.500		8/13/2009	1544
13	14.37	8.93	28.000		8/13/2009	1553
14	14.81	9.20	19.000		7/14/2009	1502
15	16.91	10.51	15.500		7/14/2009	1452
16	18.65	11.59	11.500		7/14/2009	1444
17	20.78	12.91	7.600		7/14/2009	1429
18	22.64	14.07	7.810		7/14/2009	1422
19	24.75	15.38	4.080		7/14/2009	1400
20	29.53	18.35	2.870		7/14/2009	1341
21	33.39	20.75	2.120		7/14/2009	1329
22	36.40	22.62	1.880		7/14/2009	1320
23	40.39	25.10	1.570		7/14/2009	1308
24	43.69	27.15	1.350		7/14/2009	1300
25	52.03	32.33	1.030		7/14/2009	1248
26	57.53	35.75	1.000		7/14/2009	1236
27	61.99	38.52	0.955		7/14/2009	1225
28	66.37	41.24	0.940		7/14/2009	1220
29	70.55	43.84	0.675		7/14/2009	1118
30	82.95	51.54	0.448		7/14/2009	1118
31	89.45	55.58	0.425		7/14/2009	1105
32	94.19	58.53	0.295		7/14/2009	1058
33	94.85	58.94	0.215		7/14/2009	1055
34	102.05	63.41	0.256		7/14/2009	1042
35	106.70	66.30	0.218		7/14/2009	1030
36	112.43	69.86	0.148		7/14/2009	1021
37	119.14	74.03	0.133		7/14/2009	1011

EXHIBIT #2B9b
MINOR CHANGE APPLICATION
SUSQUEHANNA RADIO CORP.
KTCK AM RADIO STATION
has: 1310 kHz - 5.0/9.0 kW - DA2
req: 1310 kHz - 5.0/25.0 kW - DA2
DALLAS, TEXAS
November 2009

KTCK AM Measured Field Strength

Shown With Matching Conductivity Curves

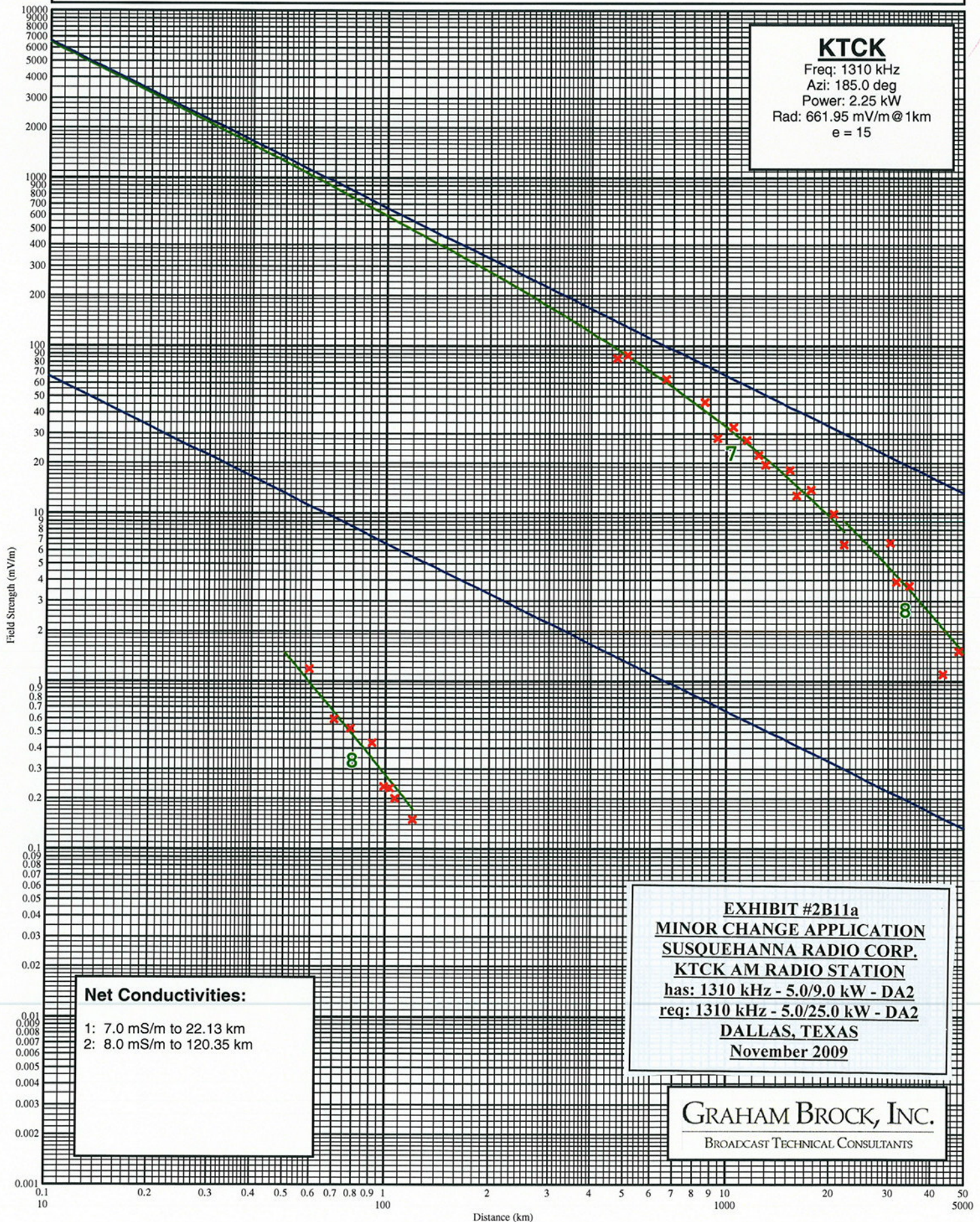


Measurements for 165.0 degrees.

Point Number -----	Distance (km) (mi) -----	Field (mV/m) -----	Notes -----	Date -----	Time -----
1	1.71 1.06	125.000		8/14/2009	0932
2	4.10 2.55	125.000		8/14/2009	0938
3	5.62 3.49	78.000		8/14/2009	0954
4	6.49 4.03	72.000		8/14/2009	1003
5	7.63 4.74	37.000		8/14/2009	1007
6	8.51 5.29	56.000		8/14/2009	1011
7	11.84 7.36	25.000		8/14/2009	1037
8	13.07 8.12	18.000		8/14/2009	1028
9	15.48 9.62	22.600		7/16/2009	1517
10	17.72 11.01	17.500		7/16/2009	1459
11	19.02 11.82	12.400		7/16/2009	1451
12	22.08 13.72	12.600		7/16/2009	1440
13	23.95 14.88	9.100		7/16/2009	1429
14	27.21 16.91	5.500		7/16/2009	1421
15	29.90 18.58	3.700		7/16/2009	1413
16	33.67 20.92	2.400		7/16/2009	1404
17	36.71 22.81	1.900		7/16/2009	1354
18	42.87 26.64	1.600		7/16/2009	1334
19	51.05 31.72	1.500		7/16/2009	1313
20	56.29 34.98	0.900		7/16/2009	1254
21	61.80 38.40	0.900		7/16/2009	1240
22	64.99 40.38	1.000		7/16/2009	1233
23	71.17 44.22	0.645		7/16/2009	1219
24	79.61 49.47	0.720		7/16/2009	1138
25	92.25 57.32	0.490		7/16/2009	1116
26	98.46 61.18	0.420		7/16/2009	1102
27	104.91 65.19	0.250		7/16/2009	1046
28	111.27 69.14	0.280		7/16/2009	1035
29	114.25 70.99	0.280		7/16/2009	1028
30	119.85 74.47	0.200		7/16/2009	1017

KTCK AM Measured Field Strength

Shown With Matching Conductivity Curves



Measurements for 185.0 degrees.

Point Number	Distance (km)	(mi)	Field (mV/m)	Notes	Date	Time
-----	----	----	-----	-----	-----	----
1	4.76	2.96	84.000		7/20/2009	1523
2	5.12	3.18	88.000		7/20/2009	1521
3	6.65	4.13	63.000		7/20/2009	1515
4	8.64	5.37	46.000		7/20/2009	1506
5	9.40	5.84	28.200		7/20/2009	1459
6	10.46	6.50	32.800		7/20/2009	1455
7	11.47	7.13	27.400		7/20/2009	1450
8	12.39	7.70	22.200		7/20/2009	1446
9	12.99	8.07	19.500		7/20/2009	1441
10	15.34	9.53	18.100		7/20/2009	1431
11	16.05	9.97	12.800		7/20/2009	1427
12	17.65	10.97	13.800		7/20/2009	1422
13	20.62	12.81	9.950		7/20/2009	1417
14	22.13	13.75	6.500		7/20/2009	1408
15	30.37	18.87	6.700		7/20/2009	1350
16	31.70	19.70	3.900		7/20/2009	1346
17	34.63	21.52	3.690		7/20/2009	1339
18	43.61	27.10	1.100		7/20/2009	1321
19	48.44	30.10	1.510		7/20/2009	1256
20	59.35	36.88	1.180		7/20/2009	1207
21	70.26	43.66	0.595		7/20/2009	1146
22	78.55	48.81	0.522		7/20/2009	1030
23	90.90	56.48	0.428		7/20/2009	1105
24	98.85	61.42	0.235		7/20/2009	1055
25	102.60	63.75	0.230		7/20/2009	1046
26	106.31	66.06	0.200		7/20/2009	1037
27	120.35	74.78	0.150		7/20/2009	1012