

WRLK-DT CHANNEL 32 MINOR
CHANGE IN LICENSED FACILITY
APPLICATION FOR MAXIMIZED
POST-TRANSITION DTV OPERATION
COLUMBIA, SOUTH CAROLINA
(South Carolina Educational Television Commission)

KESSLER AND GEHMAN ASSOCIATES, INC.
TELECOMMUNICATIONS CONSULTING ENGINEERS

20080619

Prepared by William T. Godfrey, Jr.

KG&A

507 N.W. 60th Street, Suite C
Gainesville, Florida 32607



Kessler and Gehman Associates, Inc.

Telecommunications Consulting Engineers

ENGINEERING TECHNICAL STATEMENT PREPARED BY WILLIAM T. GODFREY, JR. OF THE FIRM KESSLER AND GEHMAN ASSOCIATES, INC., TELECOMMUNICATIONS CONSULTING ENGINEERS IN CONNECTION WITH A MINOR CHANGE IN LICENSED FACILITY APPLICATION (BMLEDT-20040826AAL) REQUESTING A CONSTRUCTION PERMIT FOR AUTHORIZATION TO OPERATE THE SOUTH CAROLINA EDUCATIONAL TELEVISION COMMISSION (SCETC) DIGITAL TELEVISION BROADCAST FACILITY, WRLK-DT CHANNEL 32, WITH MAXIMIZED PARAMETERS ON ITS POST-TRANSITION DIGITAL CHANNEL AS ADOPTED IN APPENDIX B.

The firm Kessler and Gehman Associates, Inc. has been retained by South Carolina Educational Television Commission (SCETC), Columbia, SC to prepare engineering studies and the engineering portion of a minor change in licensed facility application (BMLEDT-20040826AAL) requesting authorization to maximize the WRLK-DT Channel 32 post-transition DTV facility pursuant to the procedures outlined in the Third Periodic Review Report and Order (MB Docket No. 07-91) and the Public Notice released on May 30, 2008 lifting the freeze on maximization application filings (DA-08-1213). The following table depicts the allotted (Appendix B), license (LIC) and proposed (maximization) parameters respectively for the WRLK-DT post-transition DTV facility.

<i>Facility ID</i>	<i>State</i>	<i>City</i>	<i>Call Sign</i>	<i>DTV Chan</i>	<i>DTV ERP (kW)</i>	<i>DTV HAAT (m)</i>	<i>DTV Antenna ID</i>	<i>DTV Latitude (DDMMSS)</i>	<i>DTV Longitude (DDMMSS)</i>
--------------------	--------------	-------------	------------------	-----------------	---------------------	---------------------	-----------------------	------------------------------	-------------------------------

Final DTV Table of Allotments (Appendix B) Parameters:

61013	SC	COLUMBIA	WRLK	32	62.0	316.0	OMNI	340706	805613
-------	----	----------	------	----	------	-------	------	--------	--------

Authorized Parameters (BPEDT-20080313ACQ):

61013	SC	COLUMBIA	WRLK	32	62.0	315.7	OMNI	340706	805613
-------	----	----------	------	----	------	-------	------	--------	--------

Proposed Maximized Parameters:

61013	SC	COLUMBIA	WRLK	32	250	315.5	OMNI	340706	805613
-------	----	----------	------	----	-----	-------	------	--------	--------



Accordingly, SCETC proposes to maximize operation of the WRLK-DT Channel 32 post-transition DTV facility by making the following changes to its digital Channel 32 license for post-transition DTV operation:

- 1) Increase maximum Effective Radiated Power (ERP) from 62.0 kW to 250.0 kW.
- 2) Correct antenna Height Above Average Terrain (HAAT) from 315.7 m to 315.5 m.

All other operating parameters shall remain as authorized in the existing license (BMLEDT-20040826AAL).

Post-Transition Interference Protection

The proposed facility satisfies the post-transition interference protection provisions of §73.616 of the FCC Rules. Exhibits 10 (Part1) and 11 (Part2) are Longley-Rice interference studies that were computed using a Sun Microsystems SPARC 5 computer work station loaded with the FCC's DTV analysis software. The interference percentages are exactly the same as the FCC calculations since the studies were performed using the same type computers and the same interference analysis software. Exhibit 10 was run to determine the interference predicted to each desired station from the proposed WRLK-DT Channel 32 post-transition DTV maximized facility. The FCC program recognized a mutually exclusive situation between the proposed WRLK-DT maximized facility and the allotted WRLK-DT Appendix B facility because they both had the same community of license (Columbia) and they both were assigned Channel 32. As a result, the program threw out the allotted Channel 32 facility in the "Before" studies and used the proposed Channel 32 maximized facility in the "After" studies. Therefore, only the populations in the "After" studies are used in Exhibit 10 to identify the population predicted to receive interference from the proposed maximized facility. Exhibit 11 is the exact same study as Exhibit 10 except the community of license was purposely changed from "Columbia" to "Columbia_2" for the proposed maximized facility so that the program would not throw out the allotted Channel 32 facility. Referring to Exhibit 11, it can be seen that the "Before" studies now contain the allotted Channel 32 facility so that the interference predicted to be received within the desired stations protected noise



limited contour from the allotted Channel 32 facility can be calculated for masking purposes. Referring to Exhibit 10, it can be seen that the following stations are within the prescribed culling distance and are potentially affected by the proposed facility:

Chan	Call	City/State	Dist(km)	Status	Application	Ref. No.
31	WUNU	LUMBERTON NC	189.1	LIC	BDTV	-0973
32	WPGA-TV	PERRY GA	286.7	LIC	BDTV	-0420
32	WITN-TV	WASHINGTON NC	352.0	LIC	BDTV	-0982
32	WUNL-TV	WINSTON-SALEM NC	256.2	LIC	BDTV	-0990
32	WMBF-TV	MYRTLE BEACH SC	177.0	LIC	BDTV	-1410
32	WSBN-TV	NORTON VA	344.5	LIC	BDTV	-1665
33	WMYV	GREENSBORO NC	219.2	LIC	BDTV	-0959
33	WEBA-TV	ALLENDALE SC	111.9	LIC	BDTV	-1382

The following post-transition DTV stations listed above are either beyond the site to the nearest cell evaluation distance or are not predicted to receive interference from the proposed WRLK-DT facility:

Chan	Call	City/State	Dist(km)	Status	Application	Ref. No.
31	WUNU	LUMBERTON NC	189.1	LIC	BDTV	-0973
32	WPGA-TV	PERRY GA	286.7	LIC	BDTV	-0420
32	WITN-TV	WASHINGTON NC	352.0	LIC	BDTV	-0982
32	WSBN-TV	NORTON VA	344.5	LIC	BDTV	-1665
33	WMYV	GREENSBORO NC	219.2	LIC	BDTV	-0959
33	WEBA-TV	ALLENDALE SC	111.9	LIC	BDTV	-1382

Therefore, the only post-transition DTV stations within the prescribed culling distance that are predicted to receive new interference from the proposed WRLK-DT facility are:

Chan	Call	City/State	Dist(km)	Status	Application	Ref. No.
32	WUNL-TV	WINSTON-SALEM NC	256.2	LIC	BDTV	-0990
32	WMBF-TV	MYRTLE BEACH SC	177.0	LIC	BDTV	-1410

It can be seen in the “Before” analysis in Exhibit 11 that 139,341 persons within the WUNL-DT Channel 32 post-transition DTV facility’s protected noise limited contour are predicted to receive interference from one or more of the following post-transition DTV stations, which does not include the proposed WRLK-DT facility but does include the WRLK-DT allotted facility:

31A NC	WINSTON-SALEM	BDTV	0989	LIC
32A NC	WASHINGTON	BDTV	0982	LIC
32A SC	COLUMBIA	BDTV	1394	LIC
32A SC	MYRTLE BEACH	BDTV	1410	LIC



Kessler and Gehman Associates, Inc.

Telecommunications Consulting Engineers

32A VA CHARLOTTESVILLE	BDTV	1648	LIC
32A VA NORTON	BDTV	1665	LIC
33A NC GREENSBORO	BDTV	0959	LIC

Referring to the “After” analysis in Exhibit 10, it can be seen that 143,133 persons within the WUNL-DT Channel 32 post-transition DTV facility’s protected noise limited contour are predicted to receive interference from one or more of the following post-transition DTV stations, which includes the proposed WRLK-DT facility but does not include the allotted facility:

31A NC WINSTON-SALEM	BDTV	0989	LIC
32A NC WASHINGTON	BDTV	0982	LIC
32A SC MYRTLE BEACH	BDTV	1410	LIC
32A VA CHARLOTTESVILLE	BDTV	1648	LIC
32A VA NORTON	BDTV	1665	LIC
33A NC GREENSBORO	BDTV	0959	LIC
32A SC COLUMBIA	USERRECORD01		APP

Accordingly, the proposed WRLK-DT post-transition DTV facility is predicted to cause 0.203% new interference to the WUNL-DT Channel 32 post-transition DTV facility [(143,133-139,341)/425,569] which rounds down to 0.2%.

Referring to the “Before” analysis in Exhibit 11, it can be seen that no persons within the WMBF-DT Channel 32 post-transition DTV facility’s protected noise limited contour are predicted to receive interference from post-transition DTV stations. Referring to the “After” analysis in Exhibit 10, it can be seen that 394 persons within the WMBF-DT Channel 32 post-transition DTV facility’s protected noise limited contour are predicted to receive interference from the proposed WRLK-DT facility. Accordingly, the proposed WRLK-DT post-transition DTV facility is predicted to cause 0.118% new interference to the WMBF-DT Channel 32 post-transition DTV facility [(394-0)/334,632] which rounds down to 0.1%.

The interference studies demonstrate that the proposed facility is predicted to cause no more than 0.2% new interference, to all post-transition DTV stations considered in the culling list, which is below the 0.5% new interference standard. Accordingly, the 0.5% new interference standard, pursuant to §V.F. (¶155) of the Third Periodic Review Report and Order, has been satisfied.



Kessler and Gehman Associates, Inc.

Telecommunications Consulting Engineers

Exhibits

Exhibits 1 and 2 represent WRLK's administration data, antenna and antenna structure specifications.

Exhibit 3 depicts the profile view of the proposed antenna on the antenna structure with all the appropriate elevations.

Exhibits 4 (11 deg) and 5 (90 deg) display the elevation pattern and Exhibit 6 displays the elevation pattern tabulation.

Exhibit 7 depicts the location of the WRLK-DT transmitter site on a USGS 7.5-Minute (Series) Topographic map.

Exhibit 8 is a principal community contour map demonstrating that the proposed (maximized) WRLK-DT Channel 32 post-transition DTV facility's F(50,90) 48.0 dBuV/m Principal Community contour would completely encompass the principal community of Columbia, SC.

Exhibit 9 is a contour map comparing the authorized WRLK-DT Channel 32 F(50,90) 40.5 dBuV/m contour (green) and the proposed (maximized) WRLK-DT Channel 32 F(50,90) 40.5 dBuV/m contour (red).

Exhibits 10 and 11 are Longley-Rice interference studies that were computed using a Sun Microsystems SPARC 5 computer work station loaded with the FCC's DTV analysis software. The exhibits demonstrate compliance with the 0.5% new interference standard.



Environmental Impact

The proposed construction would have no significant environmental impact as defined in §1.1307 of the FCC Rules. The digital transmitter, 6-1/8" transmission line and antenna system shall produce an ERP of 250.0 kW (horizontal polarization). It was determined that the maximum lobe of radiation from the base of the tower would occur at approximately 473.4 feet from the base of the tower (1,079.9-foot radial distance from the antenna center). At approximately 473.4 feet from the base of the tower, the depression angle of the main lobe will be approximately 64° below the horizontal. At that point, the relative field is 0178 and the power density six feet above the ground will be approximately 0.0024 mW/cm². This equates to only 0.13% of the Maximum Permissible Exposure (MPE) limits for Occupational/Controlled Exposure and only 0.63% of the MPE limits for General Population/Uncontrolled Exposure authorized by the American National Standards Institute (ANSI). Since operation of the proposed (maximized) WRLK-DT Channel 32 post-transition DTV facility will not exceed 5.0% of the MPE limit for Occupational/Controlled Exposure or General Population/Uncontrolled Exposure at any point on the ground, the proposed (maximized) WRLK-DT facility is not considered a "significant contributor" to the RF exposure environment pursuant to OET Bulletin 65, Edition 97-01. Therefore, contributions of exposure from other sources were not accounted for in this analysis. It is safe to conclude that the emissions would be insignificant and well within the maximum allowable requirements.

If other antennas are placed on the tower in the future, the licensee will cooperate with those users by reducing or completely terminating the power to the antenna when maintenance workers are in danger from the electromagnetic radiation emanating from the antenna. It is also understood that additional antennas on the support structure could increase the overall RF exposure levels and it is the responsibility of each licensee to ensure that the total RF exposure resulting from the operation of all antennas on the support structure do not exceed the maximum permissible exposure level at any point on the ground.



Kessler and Gehman Associates, Inc.

Telecommunications Consulting Engineers

Certification

This technical statement was prepared by William T. Godfrey, Telecommunications Consultant with Kessler and Gehman Associates, Inc. having offices in Gainesville, Florida and has been working in the field of radio and television broadcast consulting since 1998. He graduated from the University of North Florida with a Bachelor of Arts degree in Criminal Justice and a minor in Mathematics in 1993. As a Professional in the field of Telecommunications he states under penalty of perjury that the information contained in this report is true and correct to the best of his knowledge and belief.



KESSLER AND GEHMAN ASSOCIATES, INC.

A handwritten signature in blue ink that reads 'William T. Godfrey, Jr.' The signature is written over a horizontal line.

WILLIAM T. GODFREY, JR.

Telecommunications Technical Consultant

19 June, 2008

WRLK-DT CHANNEL 32 MAXIMIZED DTV FACILITY

Columbia, South Carolina

ENGINEERING SPECIFICATIONS

A. Transmitter Site:

Geographic coordinates (NAD27):

North Latitude 34° 07' 06"

West Longitude 80° 56' 13"

Transmitter Site: **3.5 miles north of I-20 and U.S. 1**
 0.6 miles east of Mt. Pilgrim Church

B. Main Studio Site Address: **1101 George Rogers Boulevard**
 Columbia, South Carolina 29201

Proposed Facility:

DTV Channel Number 32
 Frequency 578-584 MHz

C. Antenna Height:

Height of Site Above Mean Sea Level (AMSL) 119.4 M

Overall Height of Structure Above Ground 305.9 M
(including all appurtenances)

Overall Height of Structure Above Mean Sea Level 425.3 M
(including all appurtenances)

Height of Site Above Average Terrain 17.8 M

Antenna Height Radiation Center (R/C) Above Ground 297.7 M

Antenna Height R/C Above Mean Sea Level 417.1 M

Average of All Non-Odd Radials 101.6 M

Antenna Height R/C Above Average Terrain 315.5 M

D. System Parameters – Horizontal Polarization:

Transmitter Power Required: 12.9 kW

Maximum Power Input to Antenna: 9.6 kW

Transmission Line Loss: 1.18 dB

Combiner & Splitter Loss: 0.12 dB

Total System Loss: 1.30 dB

Transmission Line Efficiency: 76.2%

Combiner & Splitter Efficiency: 97.3%

Total System Efficiency: 74.1%

Maximum Antenna Gain in Beam Maximum: 14.17 dB

Maximum Antenna Gain in Horizontal Plane: 13.38 dB

Maximum Effective Radiated Power: 23.98 dBk

 In Beam Maximum: 250.0 kW

Maximum Effective Radiated Power: 23.19 dBk

 In Horizontal Plane: 208.4 kW

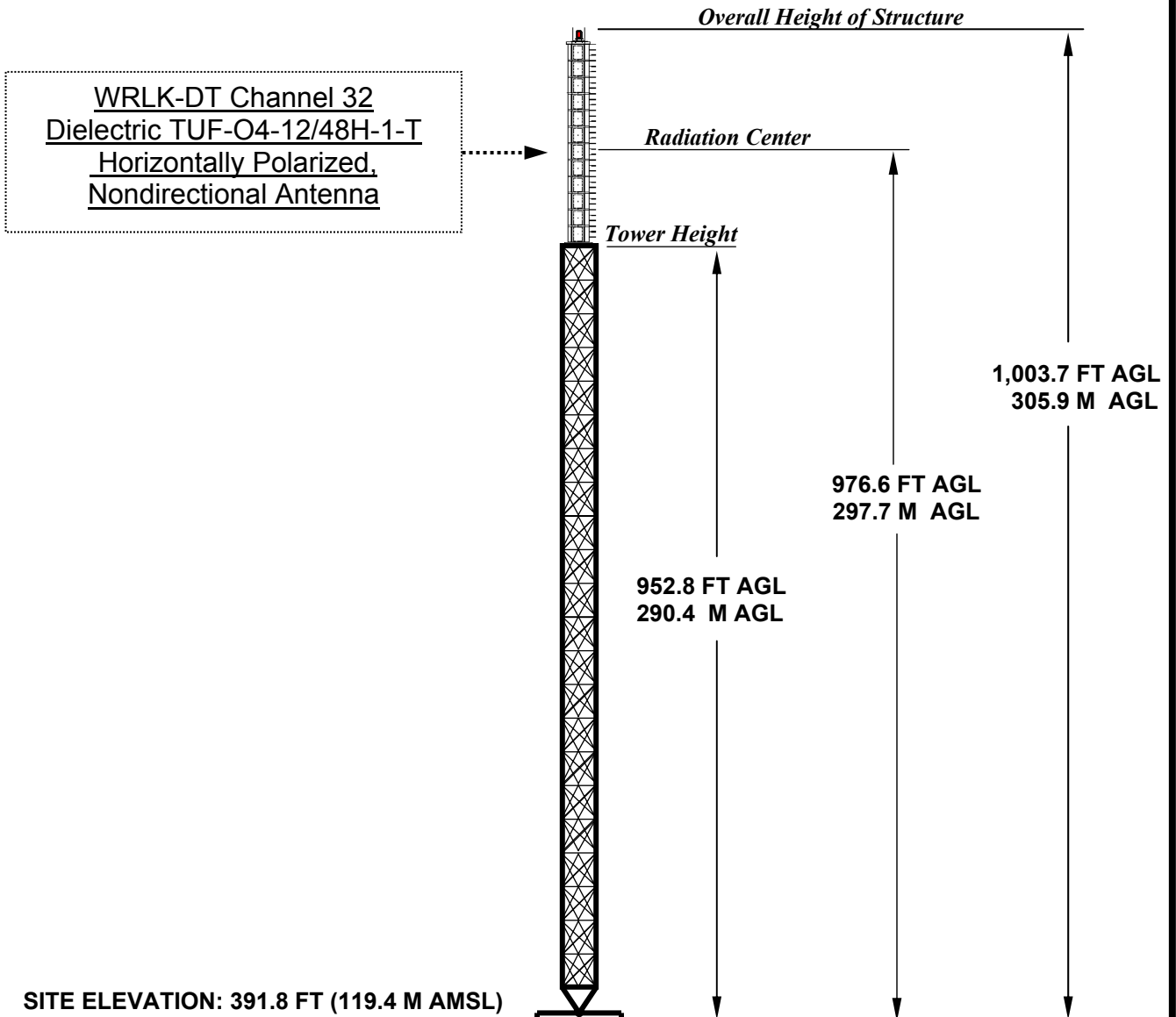
WRLK-DT CHANNEL 32 MAXIMIZED DTV FACILITY
COLUMBIA, SOUTH CAROLINA

**DATA FOR PROPOSED NONDIRECTIONAL
TRANSMITTING ANTENNA**

- A. **Antenna:** Dielectric Model TUF-O4-12/48H-1-T, Horizontally Polarized, Nondirectional, Top-mount, Dual-Channel Antenna.
- B. **Electrical Beam Tilt:** 0.5°
- C. **Mechanical Beam Tilt:** None
- D.

<u>Maximum Power Gain</u>	<u>Horizontal Polarization</u>
Maximum: 26.1	(14.17 dB)
Horizontal: 21.8	(13.38 dB)
- E. **Length:** 46.9 feet (14.3 meters) not including lightning protector.
- F. **Transmitter Power Output:** 12.9 kW
- G. **Null Fill:** 13.9%
- H. **Transmission Line:** 6-1/8" 75-ohm EIA/DCA
- I. **Transmission Line Loss:** 0.118 dB/100-feet
- J. **Total Transmission Line:** 1,000 feet (197.5 meters)
- K. **Transmission Line Attenuation:** 1.18 dB
- L. **Combiner Loss:** 0.12 dB
- M. **Total Antenna System Loss:** 1.30 dB

WRLK-DT CHANNEL 32 TOWER ELEVATION VIEW



OVERALL HEIGHT AGL: 305.9 M
OVERALL HEIGHT AMSL: 425.3 M
RADIATION CENTER AGL: 297.7 M
RADIATION CENTER AMSL: 417.1 M
RADIATION CENTER HAAT: 315.5 M
AVG OF ALL NON-ODD RADIALS: 101.6 M
SITE HAAT: 17.8 M

COORDINATES (NAD 27):

N. LATITUDE 34° 07' 06"

W. LONGITUDE 80° 56' 13"

Antenna Structure Registration Number:

1059176

NOTE: NOT TO SCALE

KESSLER AND GEHMAN

TELECOMMUNICATIONS CONSULTING ENGINEERS

507 N.W. 60th Street, Suite C
Gainesville, Florida 32607

WRLK-DT CHANNEL 32

COLUMBIA, SOUTH CAROLINA

20080619

EXHIBIT 3

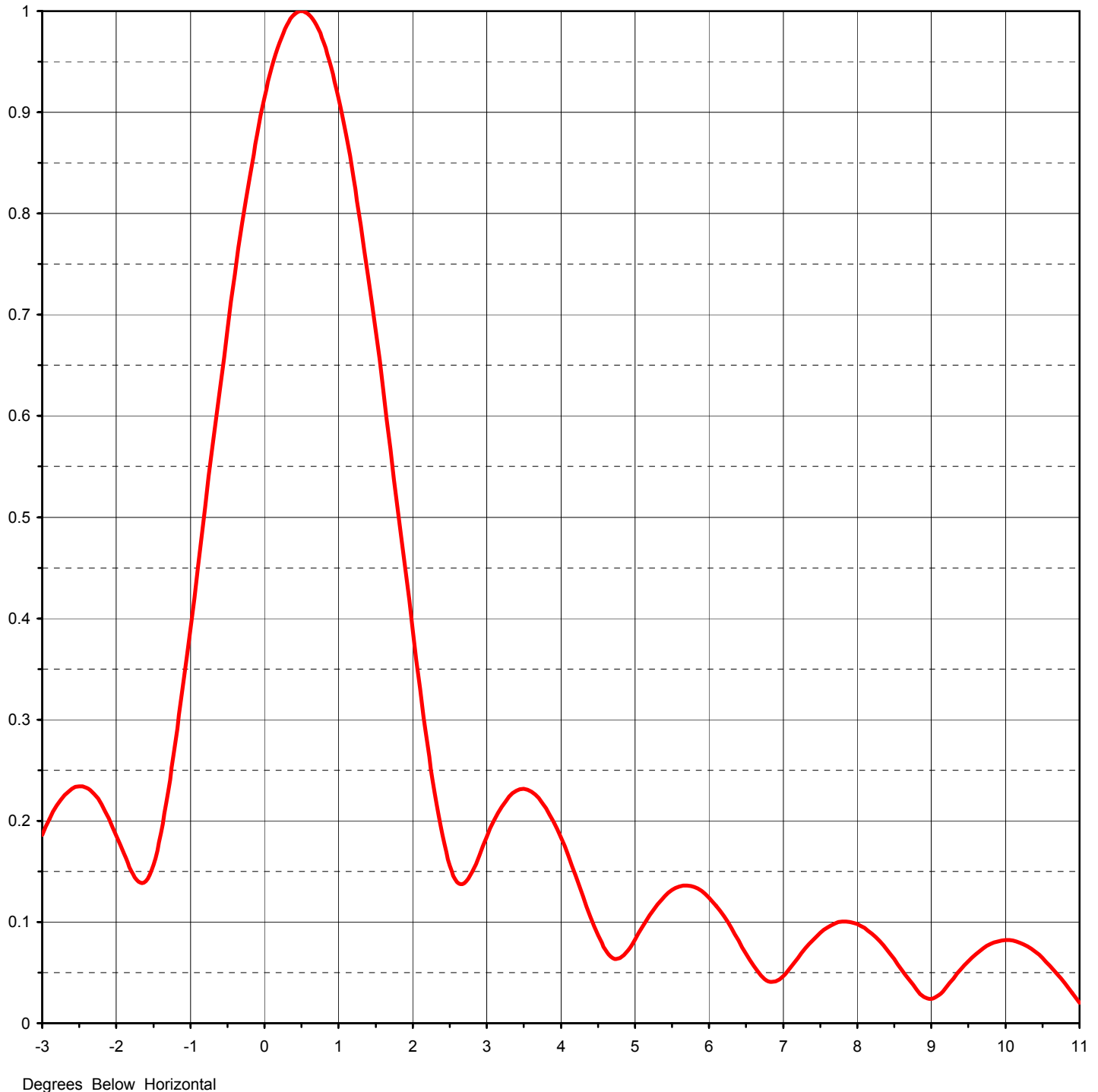


Proposal Number	DCA-10515		
Date	22-Mar-04		
Call Letters	WRLK-DT	Channel	32
Location	Columbia, SC		
Customer	SCETV		
Antenna Type	TUF-O4-12/48H-1-T		

ELEVATION PATTERN

RMS Gain at Main Lobe	26.10	(14.17 dB)
RMS Gain at Horizontal	21.80	(13.38 dB)
Calculated / Measured	Calculated	

Beam Tilt	0.50 deg
Frequency	581.00 MHz
Drawing #	12U261050



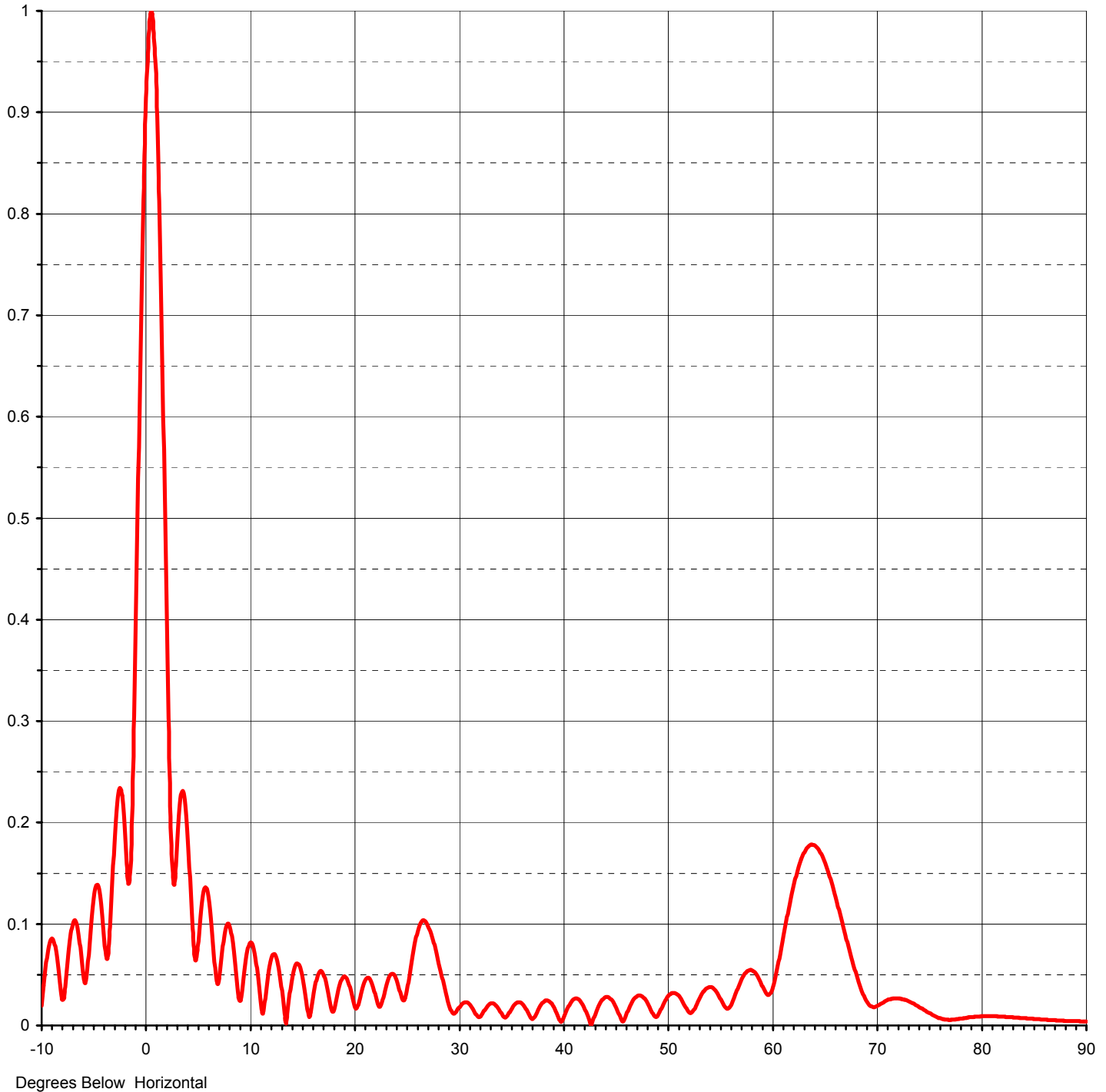


Proposal Number	DCA-10515		
Date	22-Mar-04		
Call Letters	WRLK-DT	Channel	32
Location	Columbia, SC		
Customer	SCETV		
Antenna Type	TUF-O4-12/48H-1-T		

ELEVATION PATTERN

RMS Gain at Main Lobe	26.10	(14.17 dB)
RMS Gain at Horizontal	21.80	(13.38 dB)
Calculated / Measured	Calculated	

Beam Tilt	0.50 deg
Frequency	581.00 MHz
Drawing #	12U261050-90



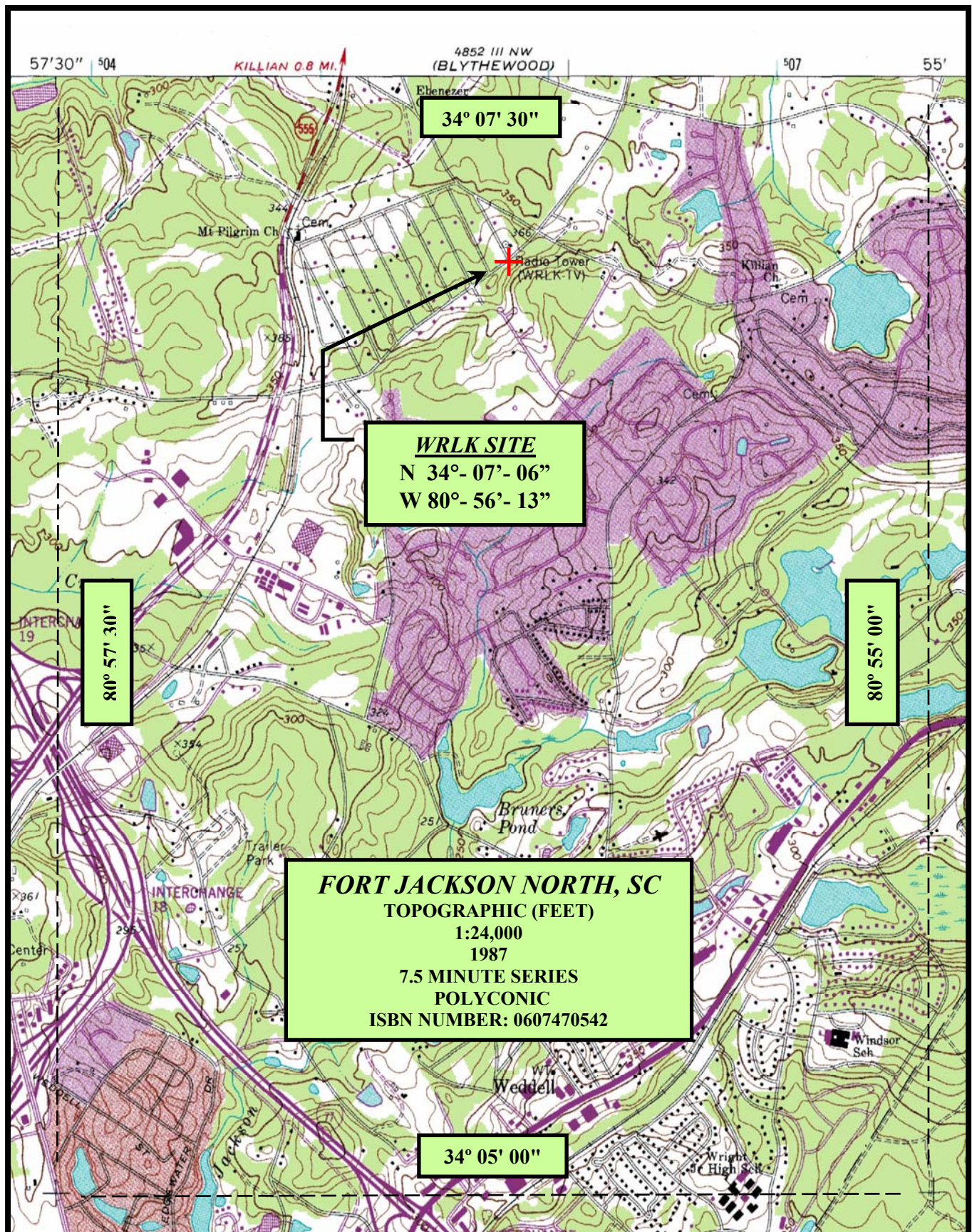


Proposal Number **DCA-10515**
 Date **22-Mar-04**
 Call Letters **WRLK-DT** Channel **32**
 Location **Columbia, SC**
 Customer **SCETV**
 Antenna Type **TUF-O4-12/48H-1-T**

TABULATION OF ELEVATION PATTERN

Elevation Pattern Drawing #: **12U261050-90**

Angle	Field	Angle	Field	Angle	Field	Angle	Field	Angle	Field	Angle	Field
-10.0	0.020	2.4	0.186	10.6	0.064	30.5	0.022	51.0	0.030	71.5	0.026
-9.5	0.066	2.6	0.139	10.8	0.049	31.0	0.021	51.5	0.023	72.0	0.027
-9.0	0.086	2.8	0.149	11.0	0.030	31.5	0.014	52.0	0.014	72.5	0.026
-8.5	0.065	3.0	0.184	11.5	0.027	32.0	0.008	52.5	0.015	73.0	0.024
-8.0	0.025	3.2	0.214	12.0	0.063	32.5	0.015	53.0	0.025	73.5	0.021
-7.5	0.064	3.4	0.230	12.5	0.068	33.0	0.021	53.5	0.034	74.0	0.018
-7.0	0.101	3.6	0.229	13.0	0.042	33.5	0.021	54.0	0.038	74.5	0.015
-6.5	0.093	3.8	0.212	13.5	0.002	34.0	0.014	54.5	0.036	75.0	0.012
-6.0	0.048	4.0	0.183	14.0	0.042	34.5	0.008	55.0	0.028	75.5	0.009
-5.5	0.069	4.2	0.146	14.5	0.061	35.0	0.015	55.5	0.019	76.0	0.007
-5.0	0.126	4.4	0.105	15.0	0.051	35.5	0.022	56.0	0.019	76.5	0.006
-4.5	0.134	4.6	0.072	15.5	0.019	36.0	0.022	56.5	0.031	77.0	0.005
-4.0	0.085	4.8	0.065	16.0	0.022	36.5	0.015	57.0	0.043	77.5	0.006
-3.5	0.088	5.0	0.083	16.5	0.048	37.0	0.007	57.5	0.052	78.0	0.007
-3.0	0.186	5.2	0.107	17.0	0.052	37.5	0.013	58.0	0.055	78.5	0.007
-2.8	0.215	5.4	0.126	17.5	0.034	38.0	0.022	58.5	0.051	79.0	0.008
-2.6	0.232	5.6	0.135	18.0	0.014	38.5	0.025	59.0	0.041	79.5	0.009
-2.4	0.233	5.8	0.135	18.5	0.035	39.0	0.020	59.5	0.031	80.0	0.009
-2.2	0.216	6.0	0.124	19.0	0.048	39.5	0.009	60.0	0.035	80.5	0.009
-2.0	0.186	6.2	0.105	19.5	0.041	40.0	0.006	60.5	0.056	81.0	0.009
-1.8	0.151	6.4	0.082	20.0	0.021	40.5	0.018	61.0	0.082	81.5	0.009
-1.6	0.140	6.6	0.057	20.5	0.024	41.0	0.025	61.5	0.110	82.0	0.009
-1.4	0.187	6.8	0.041	21.0	0.043	41.5	0.026	62.0	0.134	82.5	0.008
-1.2	0.278	7.0	0.047	21.5	0.046	42.0	0.018	62.5	0.154	83.0	0.008
-1.0	0.390	7.2	0.065	22.0	0.032	42.5	0.006	63.0	0.169	83.5	0.008
-0.8	0.510	7.4	0.082	22.5	0.018	43.0	0.009	63.5	0.177	84.0	0.007
-0.6	0.629	7.6	0.095	23.0	0.036	43.5	0.021	64.0	0.178	84.5	0.007
-0.4	0.740	7.8	0.100	23.5	0.050	44.0	0.027	64.5	0.171	85.0	0.006
-0.2	0.837	8.0	0.098	24.0	0.047	44.5	0.027	65.0	0.160	85.5	0.006
0.0	0.914	8.2	0.088	24.5	0.029	45.0	0.019	65.5	0.145	86.0	0.006
0.2	0.969	8.4	0.073	25.0	0.031	45.5	0.008	66.0	0.126	86.5	0.005
0.4	0.997	8.6	0.053	25.5	0.062	46.0	0.009	66.5	0.107	87.0	0.005
0.6	0.997	8.8	0.033	26.0	0.089	46.5	0.021	67.0	0.086	87.5	0.005
0.8	0.969	9.0	0.024	26.5	0.103	47.0	0.028	67.5	0.067	88.0	0.005
1.0	0.914	9.2	0.036	27.0	0.099	47.5	0.029	68.0	0.049	88.5	0.004
1.2	0.836	9.4	0.053	27.5	0.087	48.0	0.024	68.5	0.034	89.0	0.004
1.4	0.738	9.6	0.068	28.0	0.066	48.5	0.014	69.0	0.023	89.5	0.004
1.6	0.626	9.8	0.074	28.5	0.045	49.0	0.009	69.5	0.018	90.0	0.004
1.8	0.507	10.0	0.081	29.0	0.023	49.5	0.019	70.0	0.019		
2.0	0.388	10.2	0.082	29.5	0.012	50.0	0.028	70.5	0.022		
2.2	0.276	10.4	0.076	30.0	0.017	50.5	0.032	71.0	0.025		

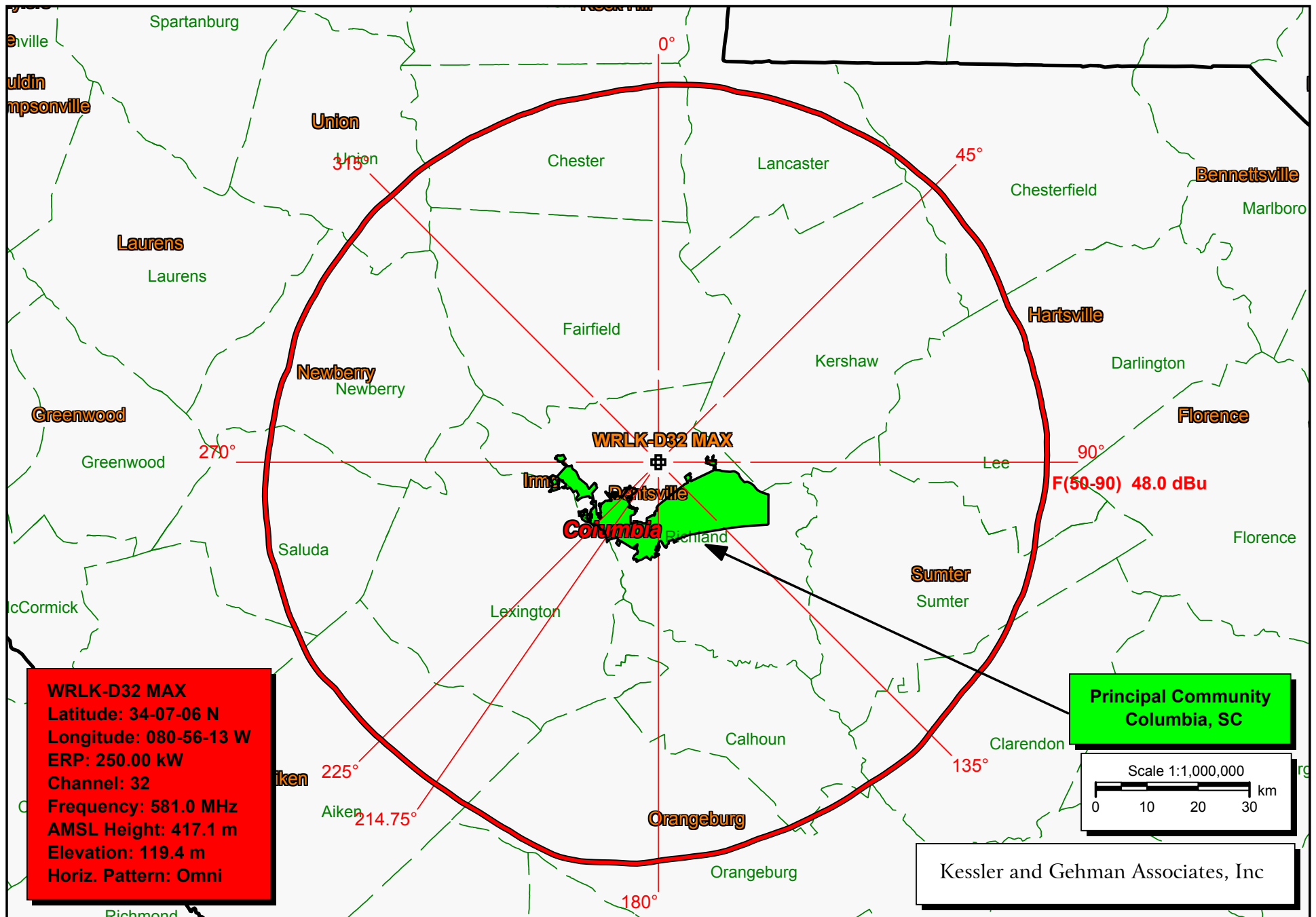


KESSLER AND GEHMAN
TELECOMMUNICATIONS CONSULTING ENGINEERS
507 N.W. 60th Street, Suite C
Gainesville, Florida 32607

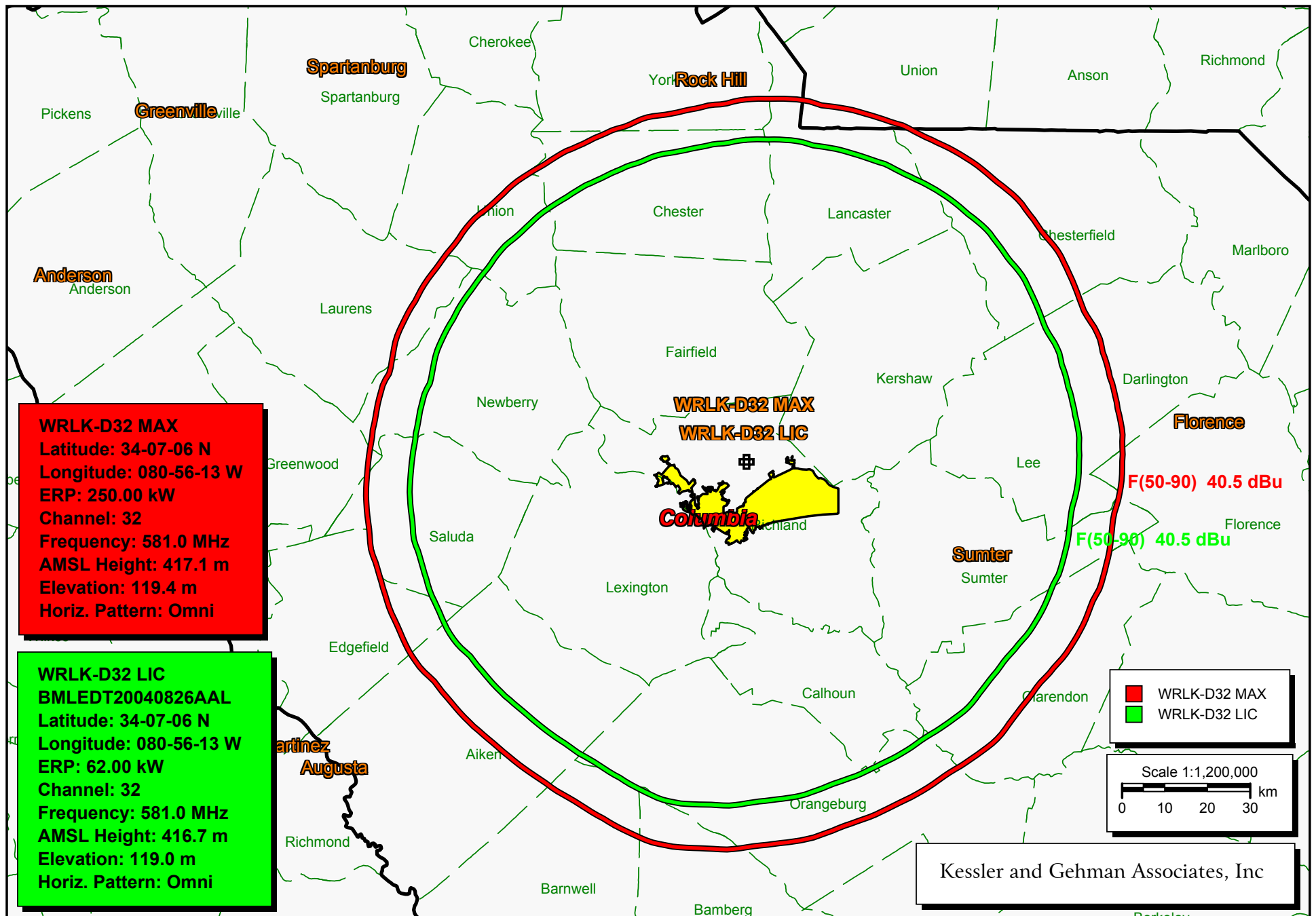
WRLK-DT CHANNEL 32
COLUMBIA, SOUTH CAROLINA

20080619

EXHIBIT 7



WRLK-DT Channel 32 F(50,90) 48.0 dBuV/m Principal Community Contour



WRLK-D32 LIC (green) vs. WRLK-D32 Proposed (red)

TV INTERFERENCE and SPACING ANALYSIS PROGRAM

Date: 06-14-2008 Time: 12:15:13

Record Selected for Analysis

WRLK-D32 USERRECORD-01 COLUMBIA SC US
Channel 32 ERP 250. kW HAAT 316. m RCAMSL 00417 m
Latitude 034-07-06 Longitude 0080-56-13
Status APP Zone 2 Border
Dir Antenna Make usr Model USRPAT01 Beam tilt N Ref Azimuth 0.
Last update Cutoff date Docket
Comments
Applicant

Cell Size for Service Analysis 2.0 km/side

Distance Increments for Longley-Rice Analysis 1.00 km

Facility meets maximum height/power limits

Azimuth (Deg)	ERP (kW)	HAAT (m)	41.0 dBu F(50,90) (km)
0.0	250.000	293.1	83.7
45.0	250.000	322.0	87.2
90.0	250.000	318.7	86.8
135.0	250.000	308.5	85.6
180.0	250.000	339.1	89.1
225.0	250.000	326.4	87.7
270.0	250.000	324.9	87.6
315.0	250.000	292.9	83.6

Evaluation toward Class A Stations

No Spacing violations or contour overlap to Class A stations

Class A Evaluation Complete

SPACING VIOLATION FOUND BETWEEN STATION

WRLK-D32 32 COLUMBIA SC USERRECORD01

and station

SHORT TO: WRLK-TV 32 COLUMBIA SC BDTV 1394
 34 -07-06 080 -56-13
 Req. separation 223.7 Actual separation 0.0 Short 223.7 km

SHORT TO: WMBF-TV 32 MYRTLE BEACH SC BDTV 1410
 33 -43-50 079 -04-32
 Req. separation 223.7 Actual separation 177.4 Short 46.3 km

LANDMOBILE SPACING VIOLATIONS FOUND

NONE

Proposed facility OK to FCC Monitoring Stations

Proposed facility OK toward West Virginia quite zone

Proposed facility OK toward Table Mountain

Proposed facility is beyond the Canadian coordination distance

Proposed facility is beyond the Mexican coordination distance

Proposed station is OK toward AM broadcast stations

 Start of Interference Analysis

Channel	Proposed Station Call	City/State	ARN
32	WRLK-D32	COLUMBIA SC	USERRECORD01

Stations Potentially Affected by Proposed Station

Chan	Call	City/State	Dist(km)	Status	Application	Ref. No.
31	WUNU	LUMBERTON NC	189.1	LIC	BDTV	-0973
32	WPGA-TV	PERRY GA	286.7	LIC	BDTV	-0420
32	WITN-TV	WASHINGTON NC	352.0	LIC	BDTV	-0982
32	WUNL-TV	WINSTON-SALEM NC	256.2	LIC	BDTV	-0990
32	WMBF-TV	MYRTLE BEACH SC	177.0	LIC	BDTV	-1410
32	WSBN-TV	NORTON VA	344.5	LIC	BDTV	-1665
33	WMYV	GREENSBORO NC	219.2	LIC	BDTV	-0959
33	WEBA-TV	ALLENDALE SC	111.9	LIC	BDTV	-1382

Analysis of Interference to Affected Station 1

Analysis of current record

Channel	Call	City/State	Application	Ref. No.
31	WUNU	LUMBERTON NC	BDTV	-0973

Stations Potentially Affecting This Station

Chan	Call	City/State	Dist(km)	Status	Application	Ref. No.
30	WSFX-TV	WILMINGTON NC	107.9	LIC	BDTV	-0984
31	WXII-TV	WINSTON-SALEM NC	212.6	LIC	BDTV	-0989
31	WAVY-TV	PORTSMOUTH VA	320.5	LIC	BDTV	-1667
32	WITN-TV	WASHINGTON NC	162.9	LIC	BDTV	-0982
32	WUNL-TV	WINSTON-SALEM NC	212.5	LIC	BDTV	-0990
32	WMBF-TV	MYRTLE BEACH SC	118.6	LIC	BDTV	-1410
32	WRLK-D32	COLUMBIA SC	189.1	APP	USERRECORD-01	

Proposal causes no interference

#####

Analysis of Interference to Affected Station 2

Analysis of current record

Channel	Call	City/State	Application	Ref. No.
32	WPGA-TV	PERRY GA	BDTV	-0420

Stations Potentially Affecting This Station

Chan	Call	City/State	Dist(km)	Status	Application	Ref. No.
32	WAAY-TV	HUNTSVILLE AL	352.6	LIC	BDTV	-0039
32	WNCN	MONTGOMERY AL	306.6	LIC	BDTV	-0052
32	WAWS	JACKSONVILLE FL	332.9	LIC	BDTV	-0316
32	WFSU-TV	TALLAHASSEE FL	284.0	LIC	BDTV	-0369
33	WEBA-TV	ALLENDALE SC	207.2	LIC	BDTV	-1382
32	WRLK-D32	COLUMBIA SC	286.7	APP	USERRECORD-01	

Total scenarios = 1

Result key: 1
Scenario 1 Affected station 2
Before Analysis

Results for: 32A GA PERRY BDTV 0420 LIC
HAAT 186.0 m, ATV ERP 100.0 kW

	POPULATION	AREA (sq km)
within Noise Limited Contour	504502	13306.4
not affected by terrain losses	504122	13282.4
lost to NTSC IX	0	0.0
lost to additional IX by ATV	121	40.1
lost to ATV IX only	121	40.1
lost to all IX	121	40.1

Potential Interfering Stations Included in above Scenario 1

32A AL MONTGOMERY	BDTV	0052	LIC
32A FL TALLAHASSEE	BDTV	0369	LIC

After Analysis

Results for: 32A GA PERRY BDTV 0420 LIC
 HAAT 186.0 m, ATV ERP 100.0 kW

	POPULATION	AREA (sq km)
within Noise Limited Contour	504502	13306.4
not affected by terrain losses	504122	13282.4
lost to NTSC IX	0	0.0
lost to additional IX by ATV	123	48.2
lost to ATV IX only	123	48.2
lost to all IX	123	48.2

Potential Interfering Stations Included in above Scenario 1

32A AL MONTGOMERY	BDTV	0052	LIC
32A FL TALLAHASSEE	BDTV	0369	LIC
32A SC COLUMBIA	USERRECORD01		APP
*Percent Service lost without proposal:	0.0	to BDTV	0420
*Percent Service lost with proposal:	0.0	to BDTV	0420

#####

Analysis of Interference to Affected Station 3

Analysis of current record

Channel	Call	City/State	Application	Ref. No.
32	WITN-TV	WASHINGTON NC	BDTV	-0982

Stations Potentially Affecting This Station

Chan	Call	City/State	Dist(km)	Status	Application	Ref. No.
31	WUNU	LUMBERTON NC	162.9	LIC	BDTV	-0973
31	WAVY-TV	PORTSMOUTH VA	180.1	LIC	BDTV	-1667
32	WUNL-TV	WINSTON-SALEM NC	290.7	LIC	BDTV	-0990
32	WMBF-TV	MYRTLE BEACH SC	238.1	LIC	BDTV	-1410
32	WVIR-TV	CHARLOTTESVILLE VA	306.8	LIC	BDTV	-1648
33	WMYV	GREENSBORO NC	226.5	LIC	BDTV	-0959
33	WTVZ-TV	NORFOLK VA	179.2	LIC	BDTV	-1662
32	WRLK-D32	COLUMBIA SC	352.0	APP	USERRECORD-01	

Total scenarios = 1

Result key: 2
 Scenario 1 Affected station 3
 Before Analysis

Results for: 32A NC WASHINGTON BDTV 0982 LIC
 HAAT 594.0 m, ATV ERP 806.0 kW

	POPULATION	AREA (sq km)
within Noise Limited Contour	1515832	44756.7
not affected by terrain losses	1513386	44728.7
lost to NTSC IX	0	0.0
lost to additional IX by ATV	15790	163.7
lost to ATV IX only	15790	163.7
lost to all IX	15790	163.7

Potential Interfering Stations Included in above Scenario 1

32A NC WINSTON-SALEM	BDTV	0990	LIC
32A VA CHARLOTTESVILLE	BDTV	1648	LIC

After Analysis

Results for: 32A NC WASHINGTON BDTV 0982 LIC
 HAAT 594.0 m, ATV ERP 806.0 kW

	POPULATION	AREA (sq km)
within Noise Limited Contour	1515832	44756.7
not affected by terrain losses	1513386	44728.7
lost to NTSC IX	0	0.0
lost to additional IX by ATV	15790	163.7
lost to ATV IX only	15790	163.7
lost to all IX	15790	163.7

Potential Interfering Stations Included in above Scenario 1

32A NC WINSTON-SALEM	BDTV	0990	LIC
32A VA CHARLOTTESVILLE	BDTV	1648	LIC
32A SC COLUMBIA	USERRECORD01		APP
*Percent Service lost without proposal:	0.0	to BDTV	0982
*Percent Service lost with proposal:	0.0	to BDTV	0982

#####

Analysis of Interference to Affected Station 4

Analysis of current record

Channel	Call	City/State	Application Ref. No.
32	WUNL-TV	WINSTON-SALEM NC	BDTV -0990

Stations Potentially Affecting This Station

Chan	Call	City/State	Dist(km)	Status	Application Ref. No.
31	WUNU	LUMBERTON NC	212.5	LIC	BDTV -0973
31	WXII-TV	WINSTON-SALEM NC	0.3	LIC	BDTV -0989
32	WITN-TV	WASHINGTON NC	290.7	LIC	BDTV -0982
32	WMBF-TV	MYRTLE BEACH SC	316.8	LIC	BDTV -1410
32	WVIR-TV	CHARLOTTESVILLE VA	244.8	LIC	BDTV -1648
32	WSBN-TV	NORTON VA	209.1	LIC	BDTV -1665
33	WMYV	GREENSBORO NC	74.9	LIC	BDTV -0959
32	WRLK-D32	COLUMBIA SC	256.2	APP	USERRECORD-01

Total scenarios = 1

Result key: 3
 Scenario 1 Affected station 4
 Before Analysis

Results for: 32A NC WINSTON-SALEM BDTV 0990 LIC

HAAT 504.0 m, ATV ERP 263.0 kW

	POPULATION	AREA (sq km)
within Noise Limited Contour	2058533	27390.3
not affected by terrain losses	2007000	25108.8
lost to NTSC IX	0	0.0
lost to additional IX by ATV	138123	2809.0
lost to ATV IX only	138123	2809.0
lost to all IX	138123	2809.0

Potential Interfering Stations Included in above Scenario 1

31A NC WINSTON-SALEM	BDTV	0989	LIC
32A NC WASHINGTON	BDTV	0982	LIC
32A SC MYRTLE BEACH	BDTV	1410	LIC
32A VA CHARLOTTESVILLE	BDTV	1648	LIC
32A VA NORTON	BDTV	1665	LIC
33A NC GREENSBORO	BDTV	0959	LIC

After Analysis

Results for: 32A NC WINSTON-SALEM BDTV 0990 LIC

HAAT 504.0 m, ATV ERP 263.0 kW

	POPULATION	AREA (sq km)
within Noise Limited Contour	2058533	27390.3
not affected by terrain losses	2007000	25108.8
lost to NTSC IX	0	0.0
lost to additional IX by ATV	143133	2900.9
lost to ATV IX only	143133	2900.9
lost to all IX	143133	2900.9

Potential Interfering Stations Included in above Scenario 1

31A NC WINSTON-SALEM	BDTV	0989	LIC
32A NC WASHINGTON	BDTV	0982	LIC
32A SC MYRTLE BEACH	BDTV	1410	LIC
32A VA CHARLOTTESVILLE	BDTV	1648	LIC
32A VA NORTON	BDTV	1665	LIC
33A NC GREENSBORO	BDTV	0959	LIC
32A SC COLUMBIA	USERRECORD01		APP
*Percent Service lost without proposal:	0.0	to BDTV	0990
*Percent Service lost with proposal:	0.3	to BDTV	0990

#####

Analysis of Interference to Affected Station 5

Analysis of current record

Channel	Call	City/State	Application Ref. No.
32	WMBF-TV	MYRTLE BEACH SC	BDTV -1410

Stations Potentially Affecting This Station

Chan	Call	City/State	Dist(km)	Status	Application Ref. No.
31	WUNU	LUMBERTON NC	118.6	LIC	BDTV -0973

32	WITN-TV	WASHINGTON NC	238.1	LIC	BDTV	-0982
32	WUNL-TV	WINSTON-SALEM NC	316.8	LIC	BDTV	-0990
33	WEBA-TV	ALLENDALE SC	223.6	LIC	BDTV	-1382
32	WRLK-D32	COLUMBIA SC	177.0	APP	USERRECORD-01	

Total scenarios = 1

Result key: 4
 Scenario 1 Affected station 5
 Before Analysis

Results for: 32A SC MYRTLE BEACH BDTV 1410 LIC
 HAAT 186.0 m, ATV ERP 165.0 kW

	POPULATION	AREA (sq km)
within Noise Limited Contour	334632	13305.7
not affected by terrain losses	334632	13305.7
lost to NTSC IX	0	0.0
lost to additional IX by ATV	0	0.0
lost to ATV IX only	0	0.0
lost to all IX	0	0.0

Potential Interfering Stations Included in above Scenario 1

After Analysis

Results for: 32A SC MYRTLE BEACH BDTV 1410 LIC
 HAAT 186.0 m, ATV ERP 165.0 kW

	POPULATION	AREA (sq km)
within Noise Limited Contour	334632	13305.7
not affected by terrain losses	334632	13305.7
lost to NTSC IX	0	0.0
lost to additional IX by ATV	394	48.3
lost to ATV IX only	394	48.3
lost to all IX	394	48.3

Potential Interfering Stations Included in above Scenario 1

32A SC COLUMBIA USERRECORD01 APP
 *Percent Service lost without proposal: 0.0 to BDTV 1410
 *Percent Service lost with proposal: 0.1 to BDTV 1410

#####

Analysis of Interference to Affected Station 6

Analysis of current record

Channel	Call	City/State	Application	Ref. No.
32	WSBN-TV	NORTON VA	BDTV	-1665

Stations Potentially Affecting This Station

Chan	Call	City/State	Dist(km)	Status	Application	Ref. No.
------	------	------------	----------	--------	-------------	----------

31	WXII-TV	WINSTON-SALEM NC	208.8	LIC	BDTV	-0989
32	WAAY-TV	HUNTSVILLE AL	426.5	LIC	BDTV	-0039
32	WUNL-TV	WINSTON-SALEM NC	209.1	LIC	BDTV	-0990
32	WVIR-TV	CHARLOTTESVILLE VA	384.8	LIC	BDTV	-1648
32	WRLK-D32	COLUMBIA SC	344.5	APP	USERRECORD-01	

Proposal causes no interference

#####

Analysis of Interference to Affected Station 7

Analysis of current record

Channel	Call	City/State	Application	Ref. No.
33	WMYV	GREENSBORO NC	BDTV	-0959

Stations Potentially Affecting This Station

Chan	Call	City/State	Dist(km)	Status	Application	Ref. No.
32	WITN-TV	WASHINGTON NC	226.5	LIC	BDTV	-0982
32	WUNL-TV	WINSTON-SALEM NC	74.9	LIC	BDTV	-0990
33	WHUT-TV	WASHINGTON DC	419.6	LIC	BDTV	-0281
33	WEBA-TV	ALLENDALE SC	330.9	LIC	BDTV	-1382
33	WTVZ-TV	NORFOLK VA	315.1	LIC	BDTV	-1662
33	WNPB-TV	MORGANTOWN WV	425.6	LIC	BDTV	-1789
34	WSOC-TV	CHARLOTTE NC	105.9	LIC	BDTV	-0951
32	WRLK-D32	COLUMBIA SC	219.2	APP	USERRECORD-01	

Proposal causes no interference

#####

Analysis of Interference to Affected Station 8

Analysis of current record

Channel	Call	City/State	Application	Ref. No.
33	WEBA-TV	ALLENDALE SC	BDTV	-1382

Stations Potentially Affecting This Station

Chan	Call	City/State	Dist(km)	Status	Application	Ref. No.
32	WPGA-TV	PERRY GA	207.2	LIC	BDTV	-0420
32	WMBF-TV	MYRTLE BEACH SC	223.6	LIC	BDTV	-1410
33	WCLP-TV	CHATSWORTH GA	351.8	LIC	BDTV	-0404
33	WMYV	GREENSBORO NC	330.9	LIC	BDTV	-0959
34	WCIV	CHARLESTON SC	160.8	LIC	BDTV	-1387
32	WRLK-D32	COLUMBIA SC	111.9	APP	USERRECORD-01	

Total scenarios = 1

Result key: 5
Scenario 1 Affected station 8
Before Analysis

Results for: 33A SC ALLENDALE BDTV 1382 LIC
 HAAT 241.0 m, ATV ERP 427.0 kW

	POPULATION	AREA (sq km)
within Noise Limited Contour	604334	15242.0
not affected by terrain losses	603312	15210.1
lost to NTSC IX	0	0.0
lost to additional IX by ATV	0	0.0
lost to ATV IX only	0	0.0
lost to all IX	0	0.0

Potential Interfering Stations Included in above Scenario 1

After Analysis

Results for: 33A SC ALLENDALE BDTV 1382 LIC
 HAAT 241.0 m, ATV ERP 427.0 kW

	POPULATION	AREA (sq km)
within Noise Limited Contour	604334	15242.0
not affected by terrain losses	603312	15210.1
lost to NTSC IX	0	0.0
lost to additional IX by ATV	13	4.0
lost to ATV IX only	13	4.0
lost to all IX	13	4.0

Potential Interfering Stations Included in above Scenario 1

32A SC COLUMBIA	USERRECORD01	APP	
*Percent Service lost without proposal:	0.0	to BDTV	1382
*Percent Service lost with proposal:	0.0	to BDTV	1382

#####

Analysis of Interference to Affected Station 9

Analysis of current record

Channel	Call	City/State	Application Ref. No.
32	WRLK-D32	COLUMBIA SC	USERRECORD-01

Stations Potentially Affecting This Station

Chan	Call	City/State	Dist(km)	Status	Application Ref. No.
31	WUNU	LUMBERTON NC	189.1	LIC	BDTV -0973
32	WPGA-TV	PERRY GA	286.7	LIC	BDTV -0420
32	WITN-TV	WASHINGTON NC	352.0	LIC	BDTV -0982
32	WUNL-TV	WINSTON-SALEM NC	256.2	LIC	BDTV -0990
32	WMBF-TV	MYRTLE BEACH SC	177.0	LIC	BDTV -1410
32	WSBN-TV	NORTON VA	344.5	LIC	BDTV -1665
33	WMYV	GREENSBORO NC	219.2	LIC	BDTV -0959
33	WEBA-TV	ALLENDALE SC	111.9	LIC	BDTV -1382

Total scenarios = 1

Result key: 6
 Scenario 1 Affected station 9
 Before Analysis

Results for: 32A SC COLUMBIA USERRECORD01 APP
 HAAT 316.0 m, ATV ERP 250.0 kW

	POPULATION	AREA (sq km)
within Noise Limited Contour	1077051	23962.1
not affected by terrain losses	1076684	23934.0
lost to NTSC IX	0	0.0
lost to additional IX by ATV	2679	136.1
lost to ATV IX only	2679	136.1
lost to all IX	2679	136.1

Potential Interfering Stations Included in above Scenario 1

32A GA PERRY	BDTV	0420	LIC
32A NC WASHINGTON	BDTV	0982	LIC
32A NC WINSTON-SALEM	BDTV	0990	LIC
32A SC MYRTLE BEACH	BDTV	1410	LIC
33A SC ALLENDALE	BDTV	1382	LIC

#####

FINISHED FINISHED FINISHED FINISHED FINISHED FINISHED

TV INTERFERENCE and SPACING ANALYSIS PROGRAM

Date: 06-14-2008 Time: 12:20:15

Record Selected for Analysis

WRLK-D32 USERRECORD-01 COLUMBIA_2 SC US
Channel 32 ERP 250. kW HAAT 316. m RCAMSL 00417 m
Latitude 034-07-06 Longitude 0080-56-13
Status APP Zone 2 Border
Dir Antenna Make usr Model USRPAT01 Beam tilt N Ref Azimuth 0.
Last update Cutoff date Docket
Comments
Applicant

Cell Size for Service Analysis 2.0 km/side

Distance Increments for Longley-Rice Analysis 1.00 km

Facility meets maximum height/power limits

Azimuth (Deg)	ERP (kW)	HAAT (m)	41.0 dBu F(50,90) (km)
0.0	250.000	293.1	83.7
45.0	250.000	322.0	87.2
90.0	250.000	318.7	86.8
135.0	250.000	308.5	85.6
180.0	250.000	339.1	89.1
225.0	250.000	326.4	87.7
270.0	250.000	324.9	87.6
315.0	250.000	292.9	83.6

Evaluation toward Class A Stations

No Spacing violations or contour overlap to Class A stations

Class A Evaluation Complete

SPACING VIOLATION FOUND BETWEEN STATION

WRLK-D32 32 COLUMBIA_2 SC USERRECORD01

and station

SHORT TO: WRLK-TV 32 COLUMBIA SC BDTV 1394
 34 -07-06 080 -56-13
 Req. separation 223.7 Actual separation 0.0 Short 223.7 km

SHORT TO: WMBF-TV 32 MYRTLE BEACH SC BDTV 1410
 33 -43-50 079 -04-32
 Req. separation 223.7 Actual separation 177.4 Short 46.3 km

LANDMOBILE SPACING VIOLATIONS FOUND

NONE

Proposed facility OK to FCC Monitoring Stations

Proposed facility OK toward West Virginia quite zone

Proposed facility OK toward Table Mountain

Proposed facility is beyond the Canadian coordination distance

Proposed facility is beyond the Mexican coordination distance

Proposed station is OK toward AM broadcast stations

 Start of Interference Analysis

Channel	Proposed Station Call	City/State	ARN
32	WRLK-D32	COLUMBIA_2 SC	USERRECORD01

Stations Potentially Affected by Proposed Station

Chan	Call	City/State	Dist(km)	Status	Application	Ref. No.
31	WUNU	LUMBERTON NC	189.1	LIC	BDTV	-0973
32	WPGA-TV	PERRY GA	286.7	LIC	BDTV	-0420
32	WITN-TV	WASHINGTON NC	352.0	LIC	BDTV	-0982
32	WUNL-TV	WINSTON-SALEM NC	256.2	LIC	BDTV	-0990
32	WRLK-TV	COLUMBIA SC	0.0	LIC	BDTV	-1394
32	WMBF-TV	MYRTLE BEACH SC	177.0	LIC	BDTV	-1410
32	WSBN-TV	NORTON VA	344.5	LIC	BDTV	-1665
33	WMYV	GREENSBORO NC	219.2	LIC	BDTV	-0959
33	WEBA-TV	ALLENDALE SC	111.9	LIC	BDTV	-1382

%%%

Analysis of Interference to Affected Station 1

Analysis of current record

Channel	Call	City/State	Application Ref. No.
---------	------	------------	----------------------

31 WUNU LUMBERTON NC BDTV -0973

Stations Potentially Affecting This Station

Chan	Call	City/State	Dist(km)	Status	Application	Ref. No.
30	WSFX-TV	WILMINGTON NC	107.9	LIC	BDTV	-0984
31	WXII-TV	WINSTON-SALEM NC	212.6	LIC	BDTV	-0989
31	WAVY-TV	PORTSMOUTH VA	320.5	LIC	BDTV	-1667
32	WITN-TV	WASHINGTON NC	162.9	LIC	BDTV	-0982
32	WUNL-TV	WINSTON-SALEM NC	212.5	LIC	BDTV	-0990
32	WRLK-TV	COLUMBIA SC	189.1	LIC	BDTV	-1394
32	WMBF-TV	MYRTLE BEACH SC	118.6	LIC	BDTV	-1410
32	WRLK-D32	COLUMBIA_2 SC	189.1	APP	USERRECORD-01	

Proposal causes no interference

#####

Analysis of Interference to Affected Station 2

Analysis of current record

Channel	Call	City/State	Application	Ref. No.
32	WPGA-TV	PERRY GA	BDTV	-0420

Stations Potentially Affecting This Station

Chan	Call	City/State	Dist(km)	Status	Application	Ref. No.
32	WAAY-TV	HUNTSVILLE AL	352.6	LIC	BDTV	-0039
32	WNCN	MONTGOMERY AL	306.6	LIC	BDTV	-0052
32	WAWS	JACKSONVILLE FL	332.9	LIC	BDTV	-0316
32	WFSU-TV	TALLAHASSEE FL	284.0	LIC	BDTV	-0369
32	WRLK-TV	COLUMBIA SC	286.7	LIC	BDTV	-1394
33	WEBA-TV	ALLENDALE SC	207.2	LIC	BDTV	-1382
32	WRLK-D32	COLUMBIA_2 SC	286.7	APP	USERRECORD-01	

Total scenarios = 2

Result key: 1
Scenario 1 Affected station 2
Before Analysis

Results for: 32A GA PERRY BDTV 0420 LIC
HAAT 186.0 m, ATV ERP 100.0 kW

	POPULATION	AREA (sq km)
within Noise Limited Contour	504502	13306.4
not affected by terrain losses	504122	13282.4
lost to NTSC IX	0	0.0
lost to additional IX by ATV	121	40.1
lost to ATV IX only	121	40.1
lost to all IX	121	40.1

Potential Interfering Stations Included in above Scenario 1

32A AL MONTGOMERY	BDTV	0052	LIC
32A FL TALLAHASSEE	BDTV	0369	LIC

After Analysis

Results for: 32A GA PERRY BDTV 0420 LIC
 HAAT 186.0 m, ATV ERP 100.0 kW

	POPULATION	AREA (sq km)
within Noise Limited Contour	504502	13306.4
not affected by terrain losses	504122	13282.4
lost to NTSC IX	0	0.0
lost to additional IX by ATV	123	48.2
lost to ATV IX only	123	48.2
lost to all IX	123	48.2

Potential Interfering Stations Included in above Scenario 1

32A AL MONTGOMERY	BDTV	0052	LIC
32A FL TALLAHASSEE	BDTV	0369	LIC
32A SC COLUMBIA_2	USERRECORD01		APP
*Percent Service lost without proposal:	0.0	to BDTV	0420
*Percent Service lost with proposal:	0.0	to BDTV	0420

Result key: 2
 Scenario 2 Affected station 2
 Before Analysis

Results for: 32A GA PERRY BDTV 0420 LIC
 HAAT 186.0 m, ATV ERP 100.0 kW

	POPULATION	AREA (sq km)
within Noise Limited Contour	504502	13306.4
not affected by terrain losses	504122	13282.4
lost to NTSC IX	0	0.0
lost to additional IX by ATV	121	40.1
lost to ATV IX only	121	40.1
lost to all IX	121	40.1

Potential Interfering Stations Included in above Scenario 2

32A AL MONTGOMERY	BDTV	0052	LIC
32A FL TALLAHASSEE	BDTV	0369	LIC

After Analysis

Results for: 32A GA PERRY BDTV 0420 LIC
 HAAT 186.0 m, ATV ERP 100.0 kW

	POPULATION	AREA (sq km)
within Noise Limited Contour	504502	13306.4
not affected by terrain losses	504122	13282.4
lost to NTSC IX	0	0.0
lost to additional IX by ATV	123	48.2
lost to ATV IX only	123	48.2
lost to all IX	123	48.2

Potential Interfering Stations Included in above Scenario 2

32A AL MONTGOMERY	BDTV	0052	LIC
32A FL TALLAHASSEE	BDTV	0369	LIC

32A SC COLUMBIA_2 USERRECORD01 APP
 *Percent Service lost without proposal: 0.0 to BDTV 0420
 *Percent Service lost with proposal: 0.0 to BDTV 0420

#####

Analysis of Interference to Affected Station 3

Analysis of current record

Channel	Call	City/State	Application	Ref. No.
32	WITN-TV	WASHINGTON NC	BDTV	-0982

Stations Potentially Affecting This Station

Chan	Call	City/State	Dist(km)	Status	Application	Ref. No.
31	WUNU	LUMBERTON NC	162.9	LIC	BDTV	-0973
31	WAVY-TV	PORTSMOUTH VA	180.1	LIC	BDTV	-1667
32	WUNL-TV	WINSTON-SALEM NC	290.7	LIC	BDTV	-0990
32	WRLK-TV	COLUMBIA SC	352.0	LIC	BDTV	-1394
32	WMBF-TV	MYRTLE BEACH SC	238.1	LIC	BDTV	-1410
32	WVIR-TV	CHARLOTTESVILLE VA	306.8	LIC	BDTV	-1648
33	WMYV	GREENSBORO NC	226.5	LIC	BDTV	-0959
33	WTVZ-TV	NORFOLK VA	179.2	LIC	BDTV	-1662
32	WRLK-D32	COLUMBIA_2 SC	352.0	APP	USERRECORD-01	

Total scenarios = 2

Result key: 3
 Scenario 1 Affected station 3
 Before Analysis

Results for: 32A NC WASHINGTON BDTV 0982 LIC
 HAAT 594.0 m, ATV ERP 806.0 kW

	POPULATION	AREA (sq km)
within Noise Limited Contour	1515832	44756.7
not affected by terrain losses	1513386	44728.7
lost to NTSC IX	0	0.0
lost to additional IX by ATV	15790	163.7
lost to ATV IX only	15790	163.7
lost to all IX	15790	163.7

Potential Interfering Stations Included in above Scenario 1

32A NC WINSTON-SALEM	BDTV	0990	LIC
32A VA CHARLOTTESVILLE	BDTV	1648	LIC

After Analysis

Results for: 32A NC WASHINGTON BDTV 0982 LIC
 HAAT 594.0 m, ATV ERP 806.0 kW

	POPULATION	AREA (sq km)
within Noise Limited Contour	1515832	44756.7
not affected by terrain losses	1513386	44728.7

lost to NTSC IX	0	0.0
lost to additional IX by ATV	15790	163.7
lost to ATV IX only	15790	163.7
lost to all IX	15790	163.7

Potential Interfering Stations Included in above Scenario 1

32A NC WINSTON-SALEM	BDTV	0990	LIC
32A VA CHARLOTTESVILLE	BDTV	1648	LIC
32A SC COLUMBIA_2	USERRECORD01		APP
*Percent Service lost without proposal:	0.0	to BDTV	0982
*Percent Service lost with proposal:	0.0	to BDTV	0982

Result key: 4
 Scenario 2 Affected station 3
 Before Analysis

Results for: 32A NC WASHINGTON BDTV 0982 LIC
 HAAT 594.0 m, ATV ERP 806.0 kW

	POPULATION	AREA (sq km)
within Noise Limited Contour	1515832	44756.7
not affected by terrain losses	1513386	44728.7
lost to NTSC IX	0	0.0
lost to additional IX by ATV	15790	163.7
lost to ATV IX only	15790	163.7
lost to all IX	15790	163.7

Potential Interfering Stations Included in above Scenario 2

32A NC WINSTON-SALEM	BDTV	0990	LIC
32A VA CHARLOTTESVILLE	BDTV	1648	LIC

After Analysis

Results for: 32A NC WASHINGTON BDTV 0982 LIC
 HAAT 594.0 m, ATV ERP 806.0 kW

	POPULATION	AREA (sq km)
within Noise Limited Contour	1515832	44756.7
not affected by terrain losses	1513386	44728.7
lost to NTSC IX	0	0.0
lost to additional IX by ATV	15790	163.7
lost to ATV IX only	15790	163.7
lost to all IX	15790	163.7

Potential Interfering Stations Included in above Scenario 2

32A NC WINSTON-SALEM	BDTV	0990	LIC
32A VA CHARLOTTESVILLE	BDTV	1648	LIC
32A SC COLUMBIA_2	USERRECORD01		APP
*Percent Service lost without proposal:	0.0	to BDTV	0982
*Percent Service lost with proposal:	0.0	to BDTV	0982

#####

Analysis of Interference to Affected Station 4

Analysis of current record

Channel	Call	City/State	Application	Ref. No.
32	WUNL-TV	WINSTON-SALEM NC	BDTV	-0990

Stations Potentially Affecting This Station

Chan	Call	City/State	Dist(km)	Status	Application	Ref. No.
31	WUNU	LUMBERTON NC	212.5	LIC	BDTV	-0973
31	WXII-TV	WINSTON-SALEM NC	0.3	LIC	BDTV	-0989
32	WITN-TV	WASHINGTON NC	290.7	LIC	BDTV	-0982
32	WRLK-TV	COLUMBIA SC	256.2	LIC	BDTV	-1394
32	WMBF-TV	MYRTLE BEACH SC	316.8	LIC	BDTV	-1410
32	WVIR-TV	CHARLOTTESVILLE VA	244.8	LIC	BDTV	-1648
32	WSBN-TV	NORTON VA	209.1	LIC	BDTV	-1665
33	WMYV	GREENSBORO NC	74.9	LIC	BDTV	-0959
32	WRLK-D32	COLUMBIA_2 SC	256.2	APP	USERRECORD-01	

Total scenarios = 2

Result key: 5
Scenario 1 Affected station 4
Before Analysis

Results for: 32A NC WINSTON-SALEM BDTV 0990 LIC
HAAT 504.0 m, ATV ERP 263.0 kW

	POPULATION	AREA (sq km)
within Noise Limited Contour	2058533	27390.3
not affected by terrain losses	2007000	25108.8
lost to NTSC IX	0	0.0
lost to additional IX by ATV	139341	2832.9
lost to ATV IX only	139341	2832.9
lost to all IX	139341	2832.9

Potential Interfering Stations Included in above Scenario 1

31A NC WINSTON-SALEM	BDTV	0989	LIC
32A NC WASHINGTON	BDTV	0982	LIC
32A SC COLUMBIA	BDTV	1394	LIC
32A SC MYRTLE BEACH	BDTV	1410	LIC
32A VA CHARLOTTESVILLE	BDTV	1648	LIC
32A VA NORTON	BDTV	1665	LIC
33A NC GREENSBORO	BDTV	0959	LIC

After Analysis

Results for: 32A NC WINSTON-SALEM BDTV 0990 LIC
HAAT 504.0 m, ATV ERP 263.0 kW

	POPULATION	AREA (sq km)
within Noise Limited Contour	2058533	27390.3
not affected by terrain losses	2007000	25108.8
lost to NTSC IX	0	0.0
lost to additional IX by ATV	143133	2900.9
lost to ATV IX only	143133	2900.9

lost to all IX 143133 2900.9

Potential Interfering Stations Included in above Scenario 1

31A NC WINSTON-SALEM	BDTV	0989	LIC	
32A NC WASHINGTON	BDTV	0982	LIC	
32A SC COLUMBIA	BDTV	1394	LIC	
32A SC MYRTLE BEACH	BDTV	1410	LIC	
32A VA CHARLOTTESVILLE	BDTV	1648	LIC	
32A VA NORTON	BDTV	1665	LIC	
33A NC GREENSBORO	BDTV	0959	LIC	
32A SC COLUMBIA_2	USERRECORD01		APP	
*Percent Service lost without proposal:		0.0	to BDTV	0990
*Percent Service lost with proposal:		0.2	to BDTV	0990

Result key: 6
 Scenario 2 Affected station 4
 Before Analysis

Results for: 32A NC WINSTON-SALEM BDTV 0990 LIC
 HAAT 504.0 m, ATV ERP 263.0 kW

	POPULATION	AREA (sq km)
within Noise Limited Contour	2058533	27390.3
not affected by terrain losses	2007000	25108.8
lost to NTSC IX	0	0.0
lost to additional IX by ATV	139341	2832.9
lost to ATV IX only	139341	2832.9
lost to all IX	139341	2832.9

Potential Interfering Stations Included in above Scenario 2

31A NC WINSTON-SALEM	BDTV	0989	LIC
32A NC WASHINGTON	BDTV	0982	LIC
32A SC COLUMBIA	BDTV	1394	LIC
32A SC MYRTLE BEACH	BDTV	1410	LIC
32A VA CHARLOTTESVILLE	BDTV	1648	LIC
32A VA NORTON	BDTV	1665	LIC
33A NC GREENSBORO	BDTV	0959	LIC

After Analysis

Results for: 32A NC WINSTON-SALEM BDTV 0990 LIC
 HAAT 504.0 m, ATV ERP 263.0 kW

	POPULATION	AREA (sq km)
within Noise Limited Contour	2058533	27390.3
not affected by terrain losses	2007000	25108.8
lost to NTSC IX	0	0.0
lost to additional IX by ATV	143133	2900.9
lost to ATV IX only	143133	2900.9
lost to all IX	143133	2900.9

Potential Interfering Stations Included in above Scenario 2

31A NC WINSTON-SALEM	BDTV	0989	LIC
32A NC WASHINGTON	BDTV	0982	LIC
32A SC COLUMBIA	BDTV	1394	LIC

32A SC MYRTLE BEACH	BDTV	1410	LIC
32A VA CHARLOTTESVILLE	BDTV	1648	LIC
32A VA NORTON	BDTV	1665	LIC
33A NC GREENSBORO	BDTV	0959	LIC
32A SC COLUMBIA_2	USERRECORD01		APP
*Percent Service lost without proposal:	0.0	to BDTV	0990
*Percent Service lost with proposal:	0.2	to BDTV	0990

#####

Analysis of Interference to Affected Station 5

Analysis of current record

Channel	Call	City/State	Application Ref. No.
32	WRLK-TV	COLUMBIA SC	BDTV -1394

Stations Potentially Affecting This Station

Chan	Call	City/State	Dist(km)	Status	Application Ref. No.
31	WUNU	LUMBERTON NC	189.1	LIC	BDTV -0973
32	WPGA-TV	PERRY GA	286.7	LIC	BDTV -0420
32	WITN-TV	WASHINGTON NC	352.0	LIC	BDTV -0982
32	WUNL-TV	WINSTON-SALEM NC	256.2	LIC	BDTV -0990
32	WMBF-TV	MYRTLE BEACH SC	177.0	LIC	BDTV -1410
32	WSBN-TV	NORTON VA	344.5	LIC	BDTV -1665
33	WMYV	GREENSBORO NC	219.2	LIC	BDTV -0959
33	WEBA-TV	ALLENDALE SC	111.9	LIC	BDTV -1382
32	WRLK-D32	COLUMBIA_2 SC	0.0	APP	USERRECORD-01

Total scenarios = 2

Result key: 7
Scenario 1 Affected station 5
Before Analysis

Results for: 32A SC COLUMBIA BDTV 1394 LIC
HAAT 316.0 m, ATV ERP 62.0 kW

	POPULATION	AREA (sq km)
within Noise Limited Contour	967732	18941.9
not affected by terrain losses	967288	18909.9
lost to NTSC IX	0	0.0
lost to additional IX by ATV	314	56.0
lost to ATV IX only	314	56.0
lost to all IX	314	56.0

Potential Interfering Stations Included in above Scenario 1

32A NC WASHINGTON	BDTV	0982	LIC
32A NC WINSTON-SALEM	BDTV	0990	LIC
32A SC MYRTLE BEACH	BDTV	1410	LIC
32A VA NORTON	BDTV	1665	LIC
33A SC ALLENDALE	BDTV	1382	LIC

After Analysis

Results for: 32A SC COLUMBIA BDTV 1394 LIC
 HAAT 316.0 m, ATV ERP 62.0 kW

	POPULATION	AREA (sq km)
within Noise Limited Contour	967732	18941.9
not affected by terrain losses	967288	18909.9
lost to NTSC IX	0	0.0
lost to additional IX by ATV	933932	17785.3
lost to ATV IX only	933932	17785.3
lost to all IX	933932	17785.3

Potential Interfering Stations Included in above Scenario 1

32A NC WASHINGTON	BDTV	0982	LIC
32A NC WINSTON-SALEM	BDTV	0990	LIC
32A SC MYRTLE BEACH	BDTV	1410	LIC
32A VA NORTON	BDTV	1665	LIC
33A SC ALLENDALE	BDTV	1382	LIC
32A SC COLUMBIA_2	USERRECORD01		APP

The following station failed the de minimis interference criteria.

32D SC COLUMBIA_2 USERRECORD01
 ERP 250.00 kW HAAT 316.0 m RCAMSL 417.0 m
 Antenna usr USRPAT01

Due to interference to the following station and scenario: 1

32D SC COLUMBIA BDTV 1394
 ERP 62.00 kW HAAT 316.0 m RCAMSL 416.0 m
 Antenna CDB 999999999999999

Percent Service lost without proposal:	0.0	to BDTV	1394
Percent Service lost with proposal:	96.6	to BDTV	1394

Result key: 8
 Scenario 2 Affected station 5
 Before Analysis

Results for: 32A SC COLUMBIA BDTV 1394 LIC
 HAAT 316.0 m, ATV ERP 62.0 kW

	POPULATION	AREA (sq km)
within Noise Limited Contour	967732	18941.9
not affected by terrain losses	967288	18909.9
lost to NTSC IX	0	0.0
lost to additional IX by ATV	314	56.0
lost to ATV IX only	314	56.0
lost to all IX	314	56.0

Potential Interfering Stations Included in above Scenario 2

32A NC WASHINGTON	BDTV	0982	LIC
32A NC WINSTON-SALEM	BDTV	0990	LIC
32A SC MYRTLE BEACH	BDTV	1410	LIC
32A VA NORTON	BDTV	1665	LIC
33A SC ALLENDALE	BDTV	1382	LIC

After Analysis

Results for: 32A SC COLUMBIA BDTV 1394 LIC
 HAAT 316.0 m, ATV ERP 62.0 kW
 POPULATION AREA (sq km)
 within Noise Limited Contour 967732 18941.9
 not affected by terrain losses 967288 18909.9
 lost to NTSC IX 0 0.0
 lost to additional IX by ATV 933932 17785.3
 lost to ATV IX only 933932 17785.3
 lost to all IX 933932 17785.3

Potential Interfering Stations Included in above Scenario 2

32A NC WASHINGTON	BDTV	0982	LIC
32A NC WINSTON-SALEM	BDTV	0990	LIC
32A SC MYRTLE BEACH	BDTV	1410	LIC
32A VA NORTON	BDTV	1665	LIC
33A SC ALLENDALE	BDTV	1382	LIC
32A SC COLUMBIA_2	USERRECORD01		APP

The following station failed the de minimis interference criteria.

32D SC COLUMBIA_2 USERRECORD01
 ERP 250.00 kW HAAT 316.0 m RCAMSL 417.0 m
 Antenna usr USRPAT01

Due to interference to the following station and scenario: 2

32D SC COLUMBIA BDTV 1394
 ERP 62.00 kW HAAT 316.0 m RCAMSL 416.0 m
 Antenna CDB 999999999999999

Percent Service lost without proposal:	0.0	to BDTV	1394
Percent Service lost with proposal:	96.6	to BDTV	1394

#####

Analysis of Interference to Affected Station 6

Analysis of current record

Channel	Call	City/State	Application Ref. No.
32	WMBF-TV	MYRTLE BEACH SC	BDTV -1410

Stations Potentially Affecting This Station

Chan	Call	City/State	Dist(km)	Status	Application Ref. No.
31	WUNU	LUMBERTON NC	118.6	LIC	BDTV -0973
32	WITN-TV	WASHINGTON NC	238.1	LIC	BDTV -0982
32	WUNL-TV	WINSTON-SALEM NC	316.8	LIC	BDTV -0990
32	WRLK-TV	COLUMBIA SC	177.0	LIC	BDTV -1394
33	WEBA-TV	ALLENDALE SC	223.6	LIC	BDTV -1382
32	WRLK-D32	COLUMBIA_2 SC	177.0	APP	USERRECORD-01

Total scenarios = 2

Result key: 9
 Scenario 1 Affected station 6
 Before Analysis

Results for: 32A SC MYRTLE BEACH BDTV 1410 LIC
 HAAT 186.0 m, ATV ERP 165.0 kW

	POPULATION	AREA (sq km)
within Noise Limited Contour	334632	13305.7
not affected by terrain losses	334632	13305.7
lost to NTSC IX	0	0.0
lost to additional IX by ATV	0	0.0
lost to ATV IX only	0	0.0
lost to all IX	0	0.0

Potential Interfering Stations Included in above Scenario 1

After Analysis

Results for: 32A SC MYRTLE BEACH BDTV 1410 LIC
 HAAT 186.0 m, ATV ERP 165.0 kW

	POPULATION	AREA (sq km)
within Noise Limited Contour	334632	13305.7
not affected by terrain losses	334632	13305.7
lost to NTSC IX	0	0.0
lost to additional IX by ATV	394	48.3
lost to ATV IX only	394	48.3
lost to all IX	394	48.3

Potential Interfering Stations Included in above Scenario 1

32A SC COLUMBIA_2 USERRECORD01 APP
 *Percent Service lost without proposal: 0.0 to BDTV 1410
 *Percent Service lost with proposal: 0.1 to BDTV 1410

Result key: 10
 Scenario 2 Affected station 6
 Before Analysis

Results for: 32A SC MYRTLE BEACH BDTV 1410 LIC
 HAAT 186.0 m, ATV ERP 165.0 kW

	POPULATION	AREA (sq km)
within Noise Limited Contour	334632	13305.7
not affected by terrain losses	334632	13305.7
lost to NTSC IX	0	0.0
lost to additional IX by ATV	0	0.0
lost to ATV IX only	0	0.0
lost to all IX	0	0.0

Potential Interfering Stations Included in above Scenario 2

After Analysis

Results for: 32A SC MYRTLE BEACH BDTV 1410 LIC

HAAT 186.0 m, ATV ERP 165.0 kW

	POPULATION	AREA (sq km)
within Noise Limited Contour	334632	13305.7
not affected by terrain losses	334632	13305.7
lost to NTSC IX	0	0.0
lost to additional IX by ATV	394	48.3
lost to ATV IX only	394	48.3
lost to all IX	394	48.3

Potential Interfering Stations Included in above Scenario 2

32A SC COLUMBIA_2	USERRECORD01	APP	
*Percent Service lost without proposal:	0.0	to BDTV	1410
*Percent Service lost with proposal:	0.1	to BDTV	1410

#####

Analysis of Interference to Affected Station 7

Analysis of current record

Channel	Call	City/State	Application	Ref. No.
32	WSBN-TV	NORTON VA	BDTV	-1665

Stations Potentially Affecting This Station

Chan	Call	City/State	Dist(km)	Status	Application	Ref. No.
31	WXII-TV	WINSTON-SALEM NC	208.8	LIC	BDTV	-0989
32	WAAY-TV	HUNTSVILLE AL	426.5	LIC	BDTV	-0039
32	WUNL-TV	WINSTON-SALEM NC	209.1	LIC	BDTV	-0990
32	WRLK-TV	COLUMBIA SC	344.5	LIC	BDTV	-1394
32	WVIR-TV	CHARLOTTESVILLE VA	384.8	LIC	BDTV	-1648
32	WRLK-D32	COLUMBIA_2 SC	344.5	APP	USERRECORD-01	

Proposal causes no interference

#####

Analysis of Interference to Affected Station 8

Analysis of current record

Channel	Call	City/State	Application	Ref. No.
33	WMYV	GREENSBORO NC	BDTV	-0959

Stations Potentially Affecting This Station

Chan	Call	City/State	Dist(km)	Status	Application	Ref. No.
32	WITN-TV	WASHINGTON NC	226.5	LIC	BDTV	-0982
32	WUNL-TV	WINSTON-SALEM NC	74.9	LIC	BDTV	-0990
32	WRLK-TV	COLUMBIA SC	219.2	LIC	BDTV	-1394
33	WHUT-TV	WASHINGTON DC	419.6	LIC	BDTV	-0281
33	WEBA-TV	ALLENDALE SC	330.9	LIC	BDTV	-1382
33	WTVZ-TV	NORFOLK VA	315.1	LIC	BDTV	-1662
33	WNPB-TV	MORGANTOWN WV	425.6	LIC	BDTV	-1789

34	WSOC-TV	CHARLOTTE NC	105.9	LIC	BDTV	-0951
32	WRLK-D32	COLUMBIA_2 SC	219.2	APP	USERRECORD-01	

Proposal causes no interference

#####

Analysis of Interference to Affected Station 9

Analysis of current record

Channel	Call	City/State	Application	Ref. No.
33	WEBA-TV	ALLENDALE SC	BDTV	-1382

Stations Potentially Affecting This Station

Chan	Call	City/State	Dist(km)	Status	Application	Ref. No.
32	WPGA-TV	PERRY GA	207.2	LIC	BDTV	-0420
32	WRLK-TV	COLUMBIA SC	111.9	LIC	BDTV	-1394
32	WMBF-TV	MYRTLE BEACH SC	223.6	LIC	BDTV	-1410
33	WCLP-TV	CHATSWORTH GA	351.8	LIC	BDTV	-0404
33	WMYV	GREENSBORO NC	330.9	LIC	BDTV	-0959
34	WCIV	CHARLESTON SC	160.8	LIC	BDTV	-1387
32	WRLK-D32	COLUMBIA_2 SC	111.9	APP	USERRECORD-01	

Total scenarios = 2

Result key: 11
Scenario 1 Affected station 9
Before Analysis

Results for: 33A SC ALLENDALE BDTV 1382 LIC
HAAT 241.0 m, ATV ERP 427.0 kW

	POPULATION	AREA (sq km)
within Noise Limited Contour	604334	15242.0
not affected by terrain losses	603312	15210.1
lost to NTSC IX	0	0.0
lost to additional IX by ATV	0	0.0
lost to ATV IX only	0	0.0
lost to all IX	0	0.0

Potential Interfering Stations Included in above Scenario 1

After Analysis

Results for: 33A SC ALLENDALE BDTV 1382 LIC
HAAT 241.0 m, ATV ERP 427.0 kW

	POPULATION	AREA (sq km)
within Noise Limited Contour	604334	15242.0
not affected by terrain losses	603312	15210.1
lost to NTSC IX	0	0.0
lost to additional IX by ATV	13	4.0
lost to ATV IX only	13	4.0
lost to all IX	13	4.0

Potential Interfering Stations Included in above Scenario 1

32A SC COLUMBIA_2 USERRECORD01 APP
*Percent Service lost without proposal: 0.0 to BDTV 1382
*Percent Service lost with proposal: 0.0 to BDTV 1382

Result key: 12
Scenario 2 Affected station 9
Before Analysis

Results for: 33A SC ALLENDALE BDTV 1382 LIC
HAAT 241.0 m, ATV ERP 427.0 kW
POPULATION AREA (sq km)
within Noise Limited Contour 604334 15242.0
not affected by terrain losses 603312 15210.1
lost to NTSC IX 0 0.0
lost to additional IX by ATV 0 0.0
lost to ATV IX only 0 0.0
lost to all IX 0 0.0

Potential Interfering Stations Included in above Scenario 2

After Analysis

Results for: 33A SC ALLENDALE BDTV 1382 LIC
HAAT 241.0 m, ATV ERP 427.0 kW
POPULATION AREA (sq km)
within Noise Limited Contour 604334 15242.0
not affected by terrain losses 603312 15210.1
lost to NTSC IX 0 0.0
lost to additional IX by ATV 13 4.0
lost to ATV IX only 13 4.0
lost to all IX 13 4.0

Potential Interfering Stations Included in above Scenario 2

32A SC COLUMBIA_2 USERRECORD01 APP
*Percent Service lost without proposal: 0.0 to BDTV 1382
*Percent Service lost with proposal: 0.0 to BDTV 1382

#####

Analysis of Interference to Affected Station 10

Analysis of current record

Channel	Call	City/State	Application Ref. No.
32	WRLK-D32	COLUMBIA_2 SC	USERRECORD-01

Stations Potentially Affecting This Station

Chan	Call	City/State	Dist(km)	Status	Application Ref. No.
31	WUNU	LUMBERTON NC	189.1	LIC	BDTV -0973

32	WPGA-TV	PERRY GA	286.7	LIC	BDTV	-0420
32	WITN-TV	WASHINGTON NC	352.0	LIC	BDTV	-0982
32	WUNL-TV	WINSTON-SALEM NC	256.2	LIC	BDTV	-0990
32	WRLK-TV	COLUMBIA SC	0.0	LIC	BDTV	-1394
32	WMBF-TV	MYRTLE BEACH SC	177.0	LIC	BDTV	-1410
32	WSBN-TV	NORTON VA	344.5	LIC	BDTV	-1665
33	WMYV	GREENSBORO NC	219.2	LIC	BDTV	-0959
33	WEBA-TV	ALLENDALE SC	111.9	LIC	BDTV	-1382

Total scenarios = 1

Result key: 13
 Scenario 1 Affected station 10
 Before Analysis

Results for: 32A SC COLUMBIA_2 USERRECORD01 APP
 HAAT 316.0 m, ATV ERP 250.0 kW

	POPULATION	AREA (sq km)
within Noise Limited Contour	1077051	23962.1
not affected by terrain losses	1076684	23934.0
lost to NTSC IX	0	0.0
lost to additional IX by ATV	1040052	22497.2
lost to ATV IX only	1040052	22497.2
lost to all IX	1040052	22497.2

Potential Interfering Stations Included in above Scenario 1

32A GA PERRY	BDTV	0420	LIC
32A NC WASHINGTON	BDTV	0982	LIC
32A NC WINSTON-SALEM	BDTV	0990	LIC
32A SC COLUMBIA	BDTV	1394	LIC
32A SC MYRTLE BEACH	BDTV	1410	LIC
33A SC ALLENDALE	BDTV	1382	LIC

#####

FINISHED FINISHED FINISHED FINISHED FINISHED FINISHED