

Exhibit 12
Santa Barbara, CA

REFERENCE 34 31 28 N 119 57 35 W	CH# 227D - 93.3 MHz, Pwr= 0.01 kW, HAAT=1179.3 M, COR= 1252 M Average Protected F(50-50)= 18.05 km Ave. F(50-10) 40 dBu= 67.8 54 dBu= 31.1 80 dBu= 2.2 100 dBu= .2	DISPLAY DATES DATA 08-16-03 SEARCH 08-27-03
----------------------------------------	--------------------------------------------------------------------------------------------------------------------------------------------------------------------------	---------------------------------------------------

CH CITY	CALL	TYPE STATE	AZI. <--	DIST FILE #	LAT. LNG.	Pwr(kw) HAAT(M)	COR(M) INT(km)	PRO(km) LICENSEE	*IN* (Overlap in km)	*OUT*
227D Santa Barbara	AP227	APP C CA	104.0 284.0	26.77 BNPFT20030314AAR	34 27 58 119 40 37	0.010 190	661 48.5	8.0 Educational Media Foundati	-13.32	-29.73
229B Santa Barbara	KDB	LIC CN CA	104.0 284.0	26.77 BLH6774	34 27 58 119 40 37	12.500 199	670 0.4	57.2 Pacific Broadcasting Compa	9.02	-30.87*
224D Naples, Etc.	K22480	LIC DHN CA	55.3 235.3	0.22 BLFT19850520TA	34 31 32 119 57 28	0.007 1101	1263 0.2	15.2 Western Translators, Inc.	-16.00*	-15.18*
227B San Luis Obispo	KZ0Z«	LIC CN CA	325.9 145.9	112.51 BLH19961226KC	35 21 40 120 39 21	23.000 426	808 81.6	80.8 American General Media-tex	-57.79	-49.89
225A Montecito	KJEE	LIC CN CA	104.0 284.0	26.77 BLH19940209KC	34 27 57 119 40 37	0.820 200	664 0.2	24.5 Montecito, Fm, Inc	11.84	2.01
225D Lompoc	AP225	APP C CA	285.0 105.0	45.66 BNPFT20030317CNH	34 37 46 120 26 27	0.055 -24	113 0.2	4.8 Radio Assist Ministry Inc.	30.75	40.61
225D Santa Maria	AP225	APP C CA	317.1 137.1	58.76 BNPFT20030317CNZ	34 54 38 120 23 56	0.019 -61	152 0.2	3.7 Radio Assist Ministry Inc.	41.85	54.84
229D Santa Maria	AP229	APP C CA	314.0 134.0	62.64 BNPFT20030317CNQ	34 54 53 120 27 14	0.055 -127	93 0.2	4.8 Radio Assist Ministry Inc.	45.56	57.59
225D Guadalupe	AP225	APP V CA	314.5 134.5	67.61 BNPFT20030317AIQ	34 56 57 120 29 21	0.010 -6	127 0.2	3.2 Calvary Chapel Of Twin Fal	50.83	64.24

"*"Affixed to 'IN' or 'Out' values = site inside protected contour.
 ERP and HAAT are on direct line to and from reference station.
 "«" = Station meets FCC minimum distance spacing for its class.

Exhibit 12 (Compliance with CFR 74.1204)

The proposed FM Translator is located within the protected 60 dBu contour of second adjacent channel station KDB, channel 229B, Santa Barbara, CA. The predicted F(50-50) field strength of KDB at the proposed translator site is 69 dBu, See Exhibit 12A. Therefore, the respective predicted interfering contour generated by the proposed FM Translator is 109 dBu. This interfering contour extends less than 79 meters from the proposed transmit antenna, and the area of overlap is unpopulated.

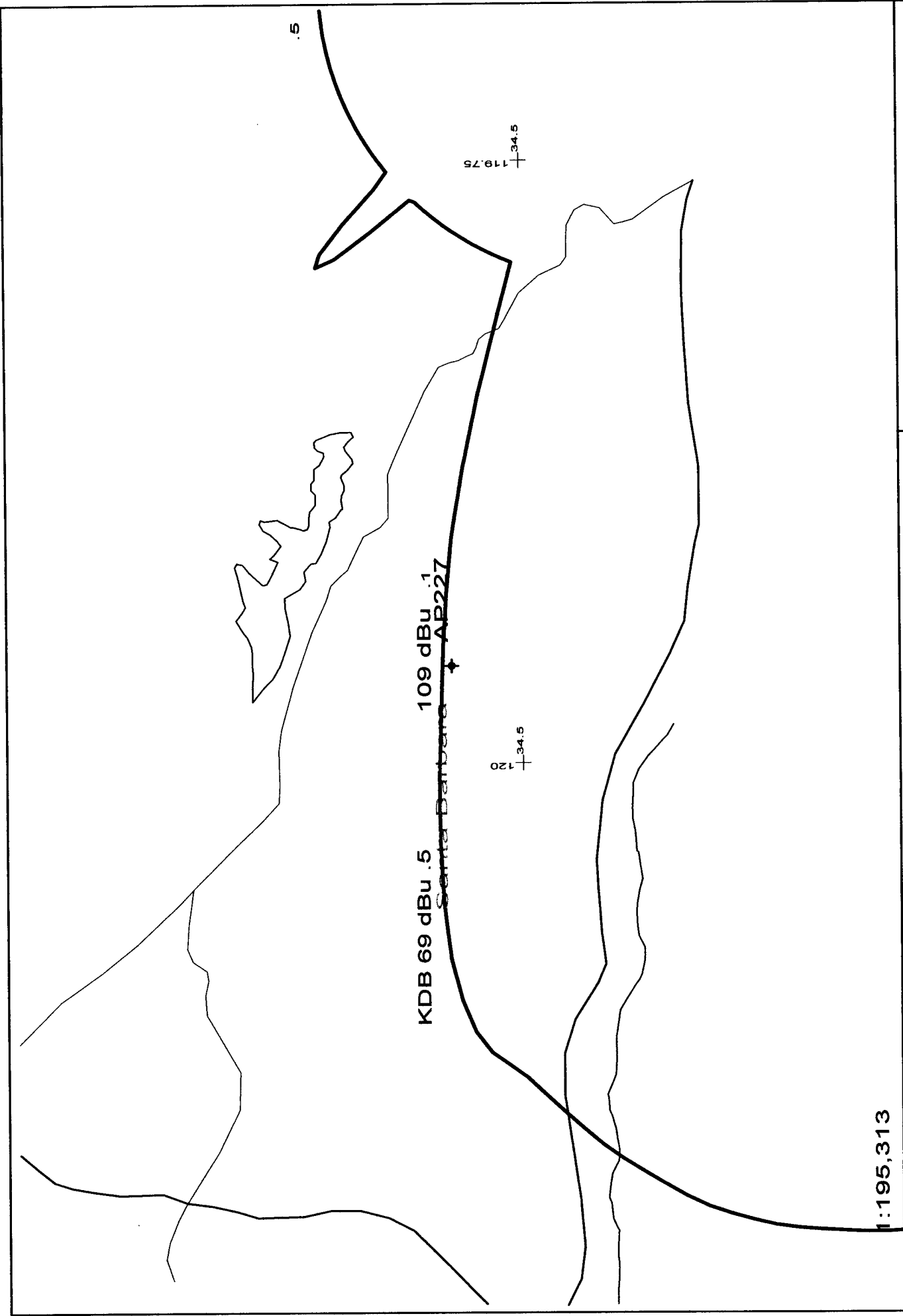
The proposed FM Translator is located within the protected 60 dBu contour of second adjacent channel station K224BO, channel 224D, Naples, CA. The predicted F(50-50) field strength of K224BO at the proposed translator site is greater than 120 dBu. Therefore, the respective predicted interfering contour generated by the proposed FM Translator is greater than 160 dBu. This interfering contour extends less than 2 meters from the proposed transmit antenna, and the area of overlap does not reach the ground.


Two factors have been investigated to determine this absence of population:

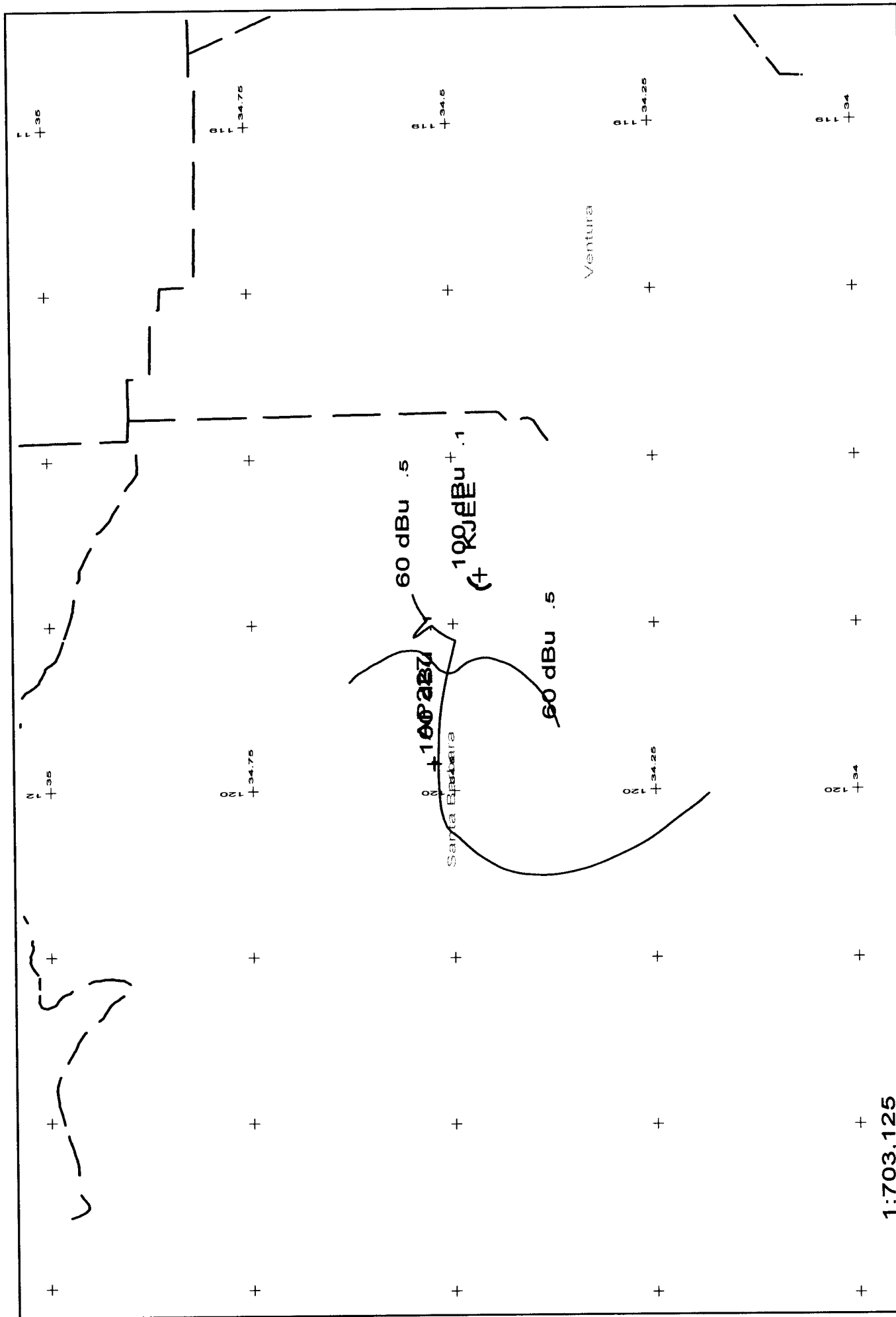
- 1) Computer software which uses the centroid method of determining population centers, based on the 2000 census data, has determined that there are no persons within the area of overlap.

- 2) Examination of the USGS topographic map reveals no regularly occupied structures within the area of overlap.

Therefore, EMF respectfully requests a waiver of C.F.R. 74.1204 based on no population within the area of predicted interference.

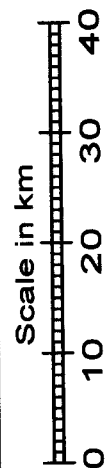


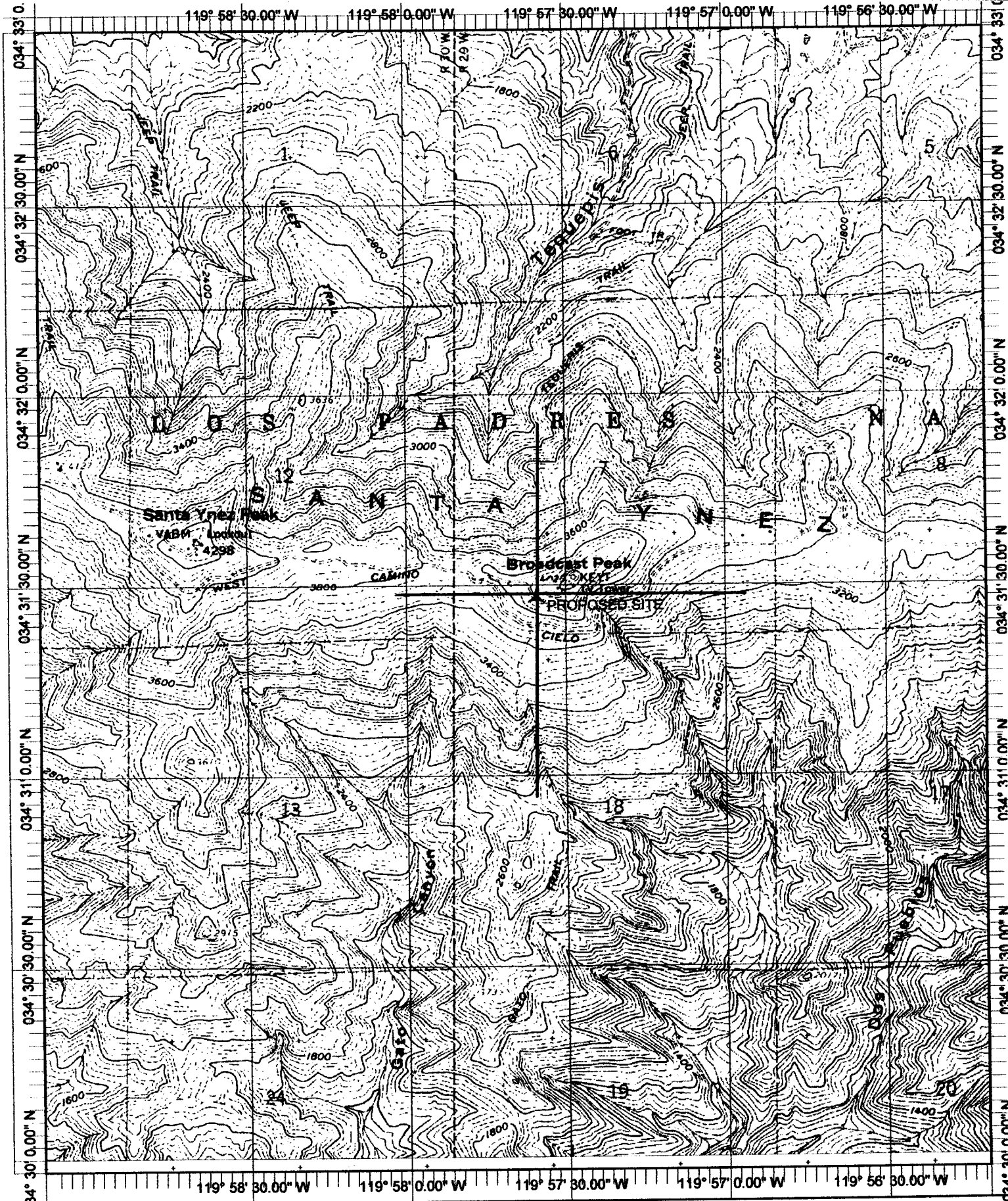
<p>Scale in km</p>  <p>0 10</p>	<p>AP227 227D .01kW 1252M AMSL</p> <p>N. Lat. 34 31 28 W. Lng. 119 57 35</p>	<p>Exhibit 12a</p> <p>- 08/03</p>
----------------------------------------------------------------------------------------------------------------------	------------------------------------------------------------------------------	-----------------------------------



AP227 vs KJEE
- 08/03

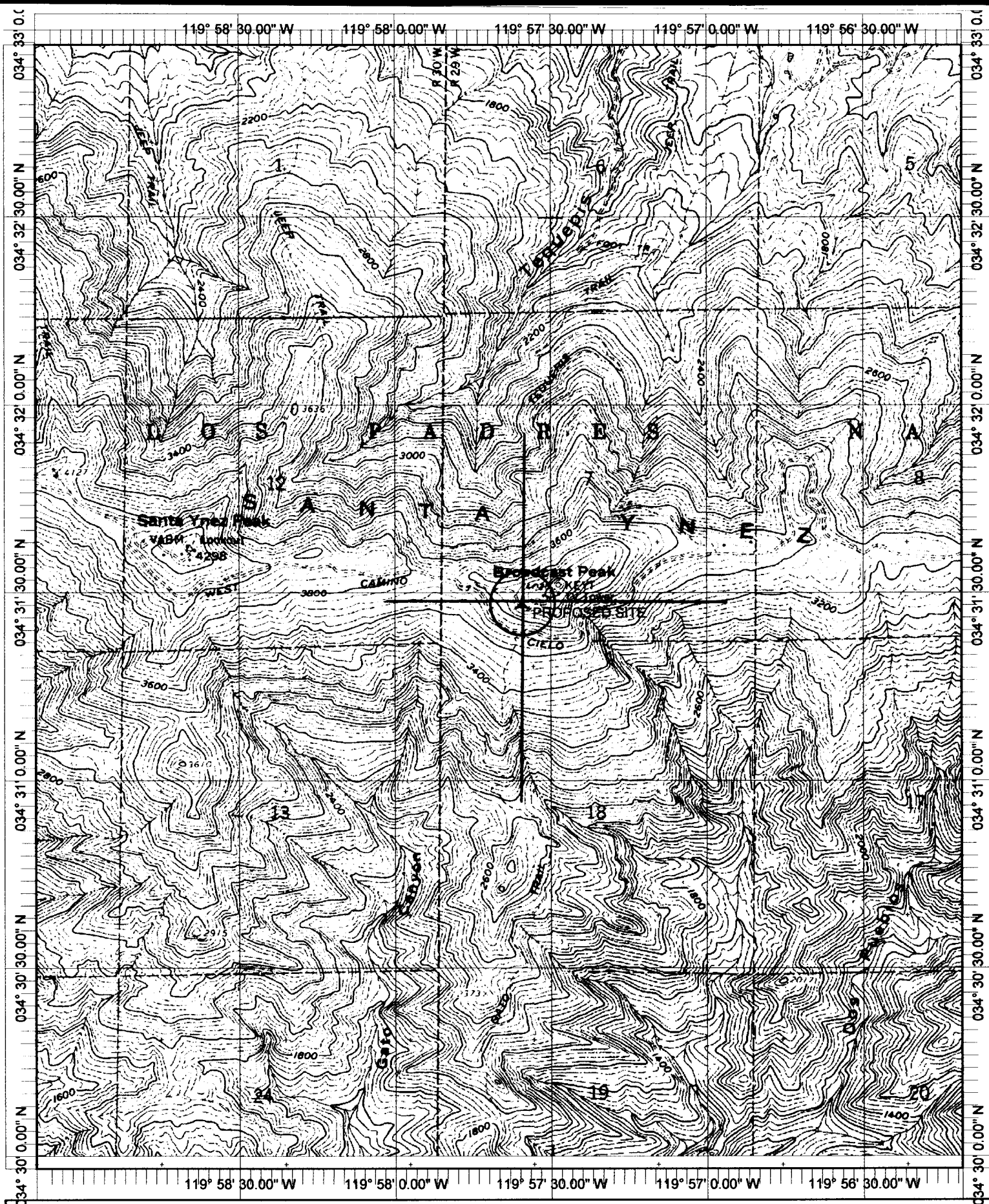
AP227 227D .01kW 1252M AMSL
KJEE 225A .82kW 664M AMSL





Name: LAKE CACHUMA
 Date: 8/27/2003
 Scale: 1 inch equals 2000 feet

Location: 034° 31' 27.8" N 119° 57' 40.0" W
 Caption: Exhibit 12
 Site 34-31-28 / 119-57-35



Name: LAKE CACHUMA
 Date: 8/27/2003
 Scale: 1 inch equals 2000 feet

Location: 034° 31' 27.8" N 119° 57' 40.0" W
 Caption: Exhibit 12
 Site 34-31-28 / 119-57-35