

W268AZ - MINOR MODIFICATION OF CONSTRUCTION PERMIT

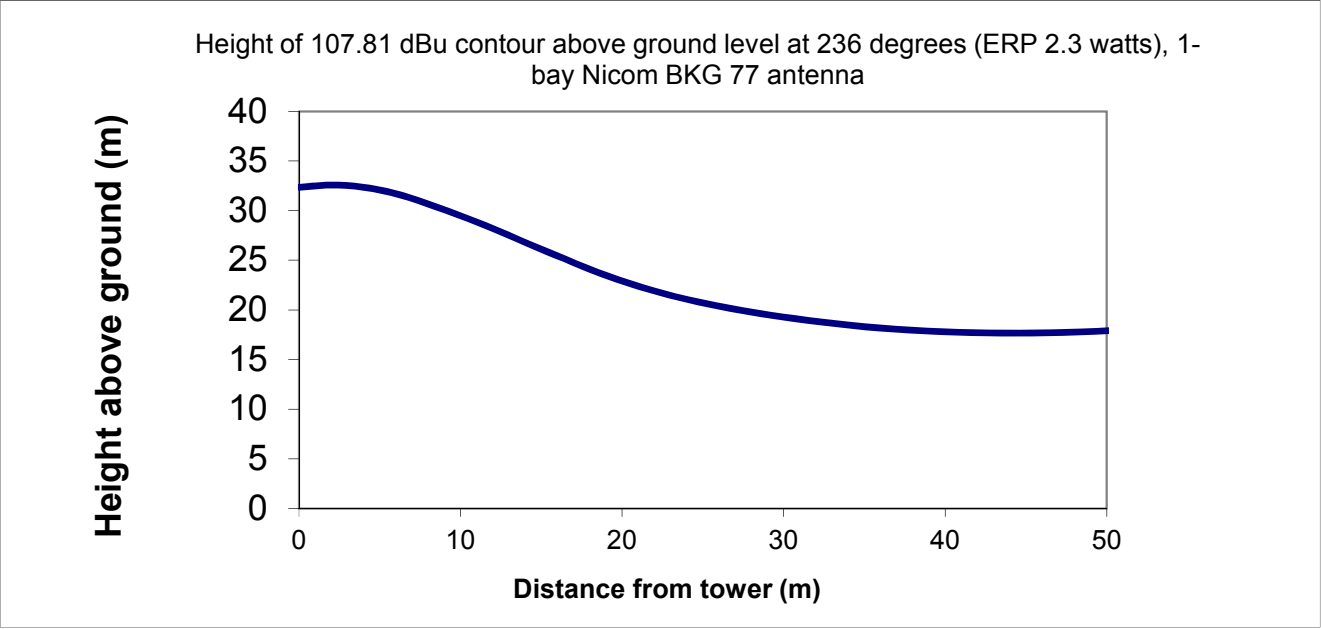
Demonstration of 60 dBu contour within the 'greater' of 2 mV or 25-mile radius of WRRL-AM

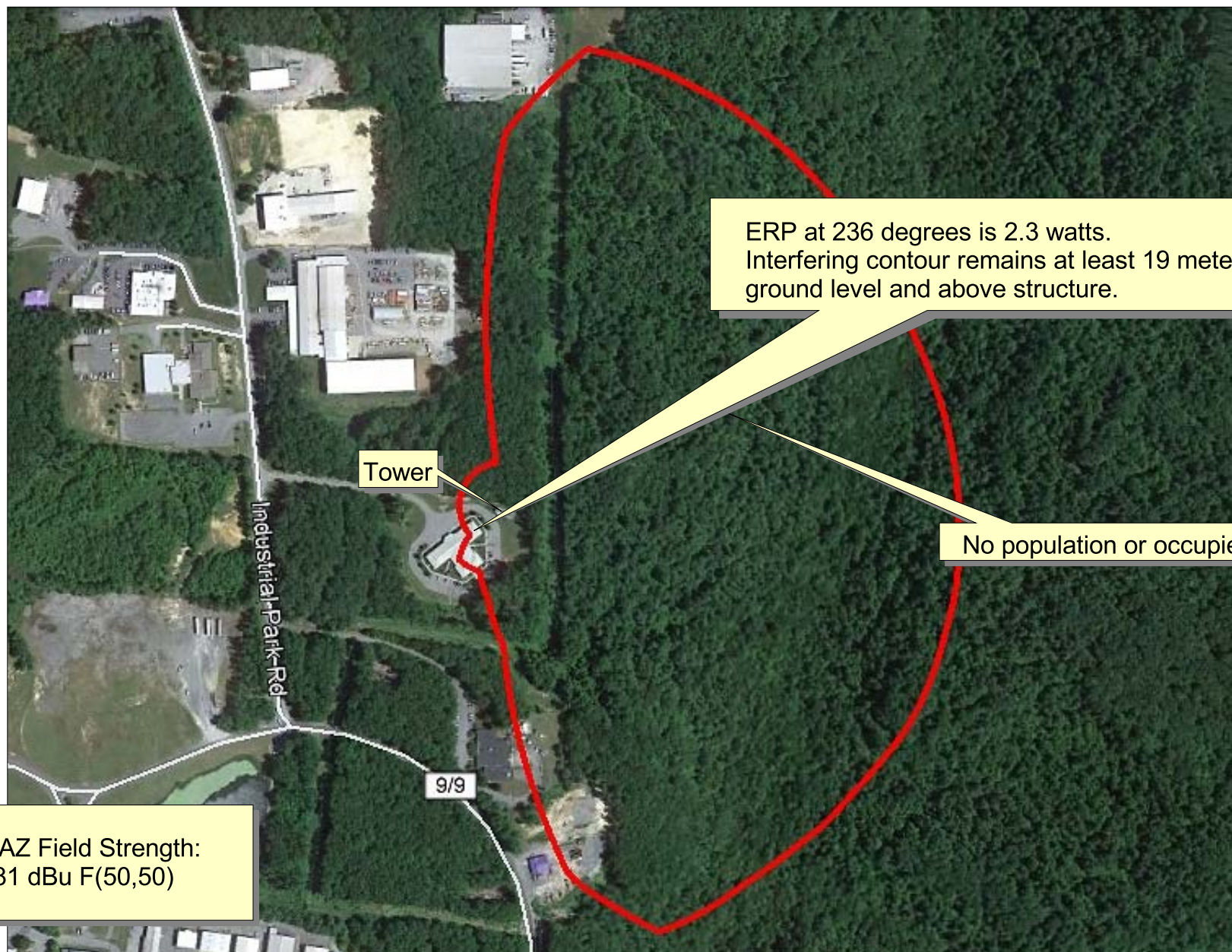
Figure 1

Table 1
W268AZ - MINOR MODIFICATION OF CONSTRUCTION PERMIT
Channel Study

Chan	Class	Call Letters	Type	Status	City	State	Country	Owner	Distance (km)	Bearing TO (deg)	Req. Dist. (km)	Clearance (km)	Field Strength (dBu)	
266	D	W266AZ	FX	LIC	BECKLEY	WV	US	SOUTHERN COMMUNICATIONS COF	9.5	221.9	14.9	-5.5	67.8	See NOTE
267	A	WZFM	FM	LIC	NARROWS	VA	US	WZFM, LLC	60.5	153.7	37.2	23.3		
268	D	W268AZ	FX	CP	BECKLEY	WV	US	CHRISTI LILLY	4.8	105.6	32.9	-28.1		(same as applicant)
268	D	W268AZ	FX	LIC	BECKLEY	WV	US	CHRISTI LILLY	8.6	301.5	18.3	-9.8		(same as applicant)
270	B	WVOW-FM	FM	LIC	LOGAN	WV	US	LOGAN BROADCASTING CORP.	75.9	276.1	58.6	17.3		

NOTE: (with respect to W266AZ) 2nd adjacent W266AZ has a field strength of 67.81 dBu F(50,50) at the proposed site. Therefore the proposed translator's interfering contour is the 107.81 dBu F(50,10) contour. Using a single bay Nicom BKG-77 antenna, the ERP radiated at 236 degrees is 2.3 watts, and the interfering contour will remain at least 19 meters above ground level and above the structure shown in Figure 2. Therefore, The proposed translator's 107.81 dBu F(50,10) does not include any structures or population. Therefore this proposal is compliant with the allowance of Rule 74.1204(d). (See FIGURE 2 map attached)





W268AZ BECKLEY, WV
MINOR MODIFICATION OF CONSTRUCTION PERMIT
2nd adjacent channel interference exhibit with respect to W266AZ

Radiofrequency Electromagnetic Exposure Analysis

Source	Height AGL(m)	Antenna type	Bays	Horizontal ERP (kw)	Vertical ERP (kw)	Power Density $\mu\text{W}/\text{cm}^2$ at 2 meters AGL				
						within 10 meters distance	% controlled environment limit (1000 $\mu\text{W}/\text{cm}^2$)	Max. PD	% uncontrolled environment limit (200 $\mu\text{W}/\text{cm}^2$)	Distance to maximum PD (m)
W268AZ Proposed	39.6	NICOM-BKG77	1	0.250	0.250	0.45	0.05%	2.12	1.1%	42.4
						0.5	0.05%	2.1	1.1%	42.4

The proposed facility is excluded from environmental processing under 47. C.F.R. Section 1.1306 (i.e., The facility will not have a significant environmental impact and complies with the maximum permissible radiofrequency electromagnetic exposure limits for controlled and uncontrolled environments).

Calculations made using FCC FMModel

In the absence of specific antenna information, "Dipole (EPA)" is assumed ("worst case")