

TECHNICAL EXHIBIT  
APPLICATION FOR AUXILIARY STATION  
RADIO STATION KCYY(FM) (FACILITY ID 48718)  
SAN ANTONIO, TEXAS  
CH 262C 1.31 KW 273 M

Technical Narrative

The technical exhibit of which this narrative is part was prepared on behalf of radio station KCYY(FM) at San Antonio, Texas. The KCYY(FM) main facility is presently licensed on Channel 262C with an effective radiated power of 100 kilowatts and antenna height above average terrain of 300 meters.<sup>1</sup> By this instant application, KCYY(FM) is proposing a new auxiliary facility at its licensed transmitter site. The FCC tower number for the existing antenna mounting structure is 1051212. It is believed that this proposal conforms to all applicable rules and regulations of the FCC.

Transmitter Location

The herein proposed auxiliary facility will utilize an ERI SHPX-4AC-SP, 4-bay antenna mounted on same tower as the main KCYY(FM) antenna. The proposed antenna is located at the 304.8 meter (1000 foot) level (see Figure 1).

Blanketing Contour

The 115 dBu predicted blanketing contour of the station would extend radially 0.5 kilometer from the transmitting site. The applicant recognizes its responsibility to resolve complaints of blanketing interference as required by Section 73.318.

---

<sup>1</sup> See FCC File No. BMLH-20001010ACO

### Coverage Contours

The predicted 60 dBu coverage contours for the auxiliary operation and the existing main operation were calculated in accordance with the provisions of Section 73.313. In accordance with current FCC practice, the distances to the contours were calculated without consideration given to terrain roughness correction factors.

The average terrain elevations from 3 to 16 kilometers along eight radials evenly spaced at 45 degree intervals were obtained from the National Geophysical Data Center's (NGDC) 30-second terrain database. The terrain elevations were then used in combination with the effective radiated power for determining the distances to coverage contours.

Figure 2 is a map showing the predicted 60 dBu coverage contours for the licensed and proposed operations. As the map illustrates, the predicted auxiliary's 60-dBu contour is entirely encompassed by the primary station's 60-dBu contour.

### Radiofrequency Electromagnetic Field Exposure

The proposed KCYY(FM) auxiliary facilities were evaluated in terms of potential radio frequency (RF) energy exposure at ground level to workers and the general public. The radiation center for the proposed ERI "rototiller" type 4 bay antenna is located 304.8 meters above ground level. The effective radiated power is 2.6 kilowatts (combined horizontal and vertical polarizations). Using the FCC's FM Model program, the worst-case ground level power density is approximately  $0.0001 \text{ mW/cm}^2$ . This is less than five percent of the Commission's guideline in an uncontrolled environment for an FM radio station.<sup>2</sup>

---

<sup>2</sup> The FCC maximum guideline for a FM broadcast station in an uncontrolled environment is  $0.2 \text{ mW/cm}^2$ .

Access to the transmitting site is restricted and appropriately marked with warning signs. In the event that workers or other authorized personnel enter restricted areas or climb the tower or any nearby adjacent towers, appropriate measures will be taken to assure worker safety with respect to radio frequency radiation exposure. Such measures include reducing the average exposure by spreading out the work over a longer period of time, wearing "accepted" RFR protective clothing and/or RFR exposure monitors or scheduling work when the stations are at reduced power or shut down.

It is noted that this technical exhibit only addresses the potential for radiofrequency electromagnetic field exposure. All other aspects of the environmental processing analysis will be provided to the FCC by the tower owner as part of the tower registration process.



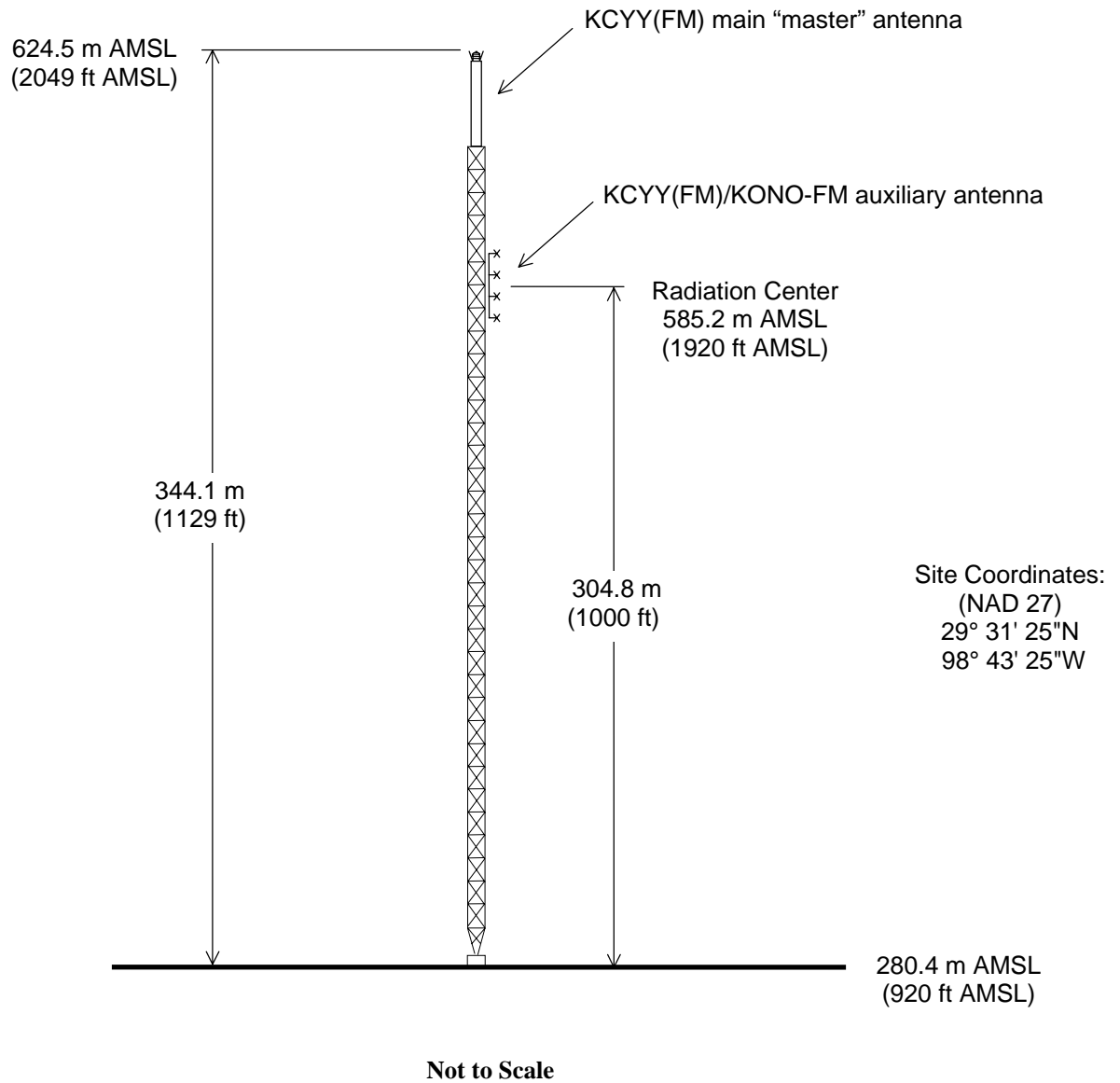
Jonathan N. Edwards

du Treil, Lundin & Rackley, Inc.  
201 Fletcher Avenue  
Sarasota, Florida 34237  
941.329.6000

November 9, 2005

Figure 1

ASRN: 1051212



## **ANTENNA AND SUPPORTING STRUCTURE**

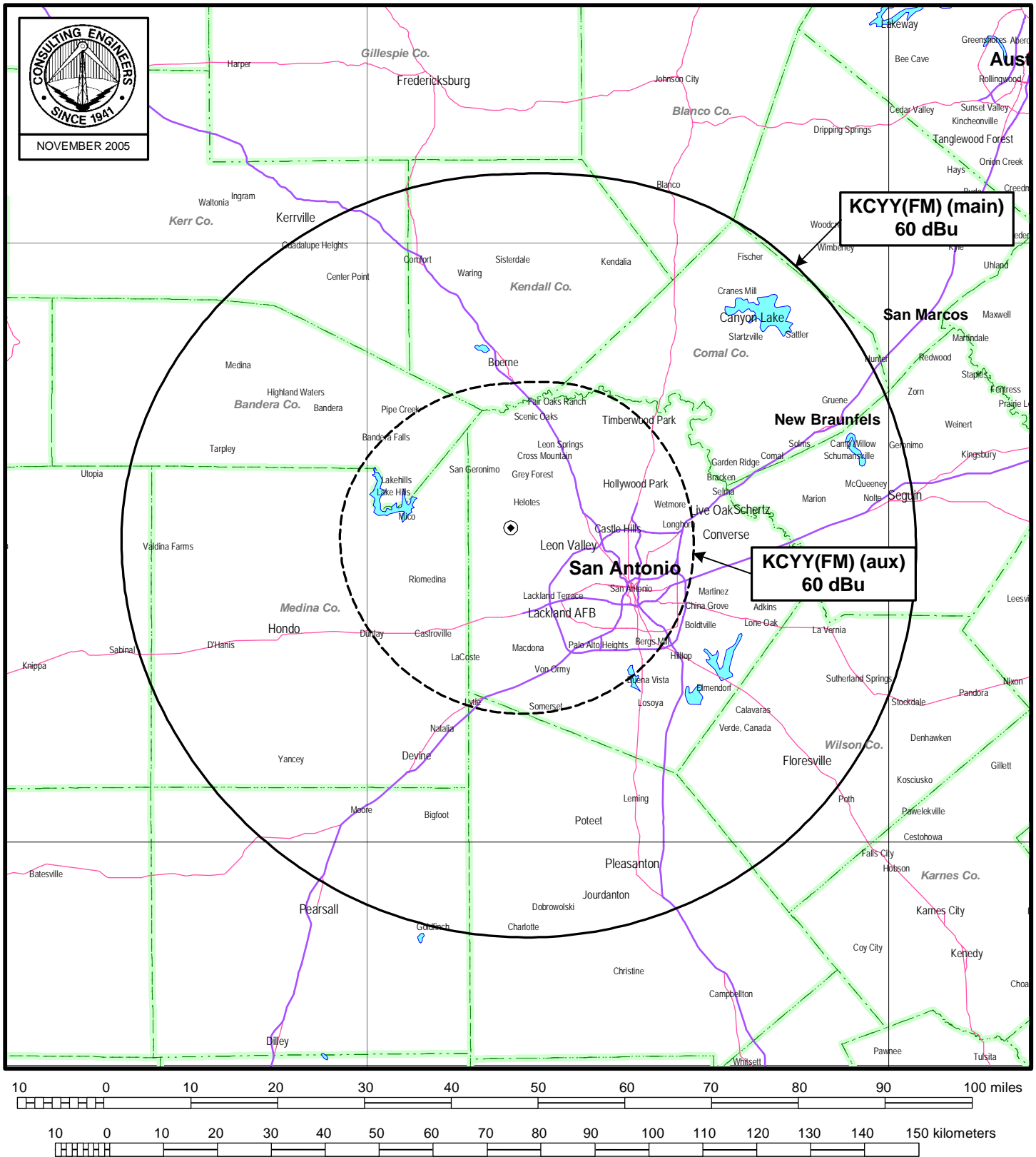
AUXILIARY FM STATION KCYY(FM)

SAN ANTONIO, TEXAS

CH 262C 1.31 KW 273 M

du Treil, Lundin & Rackley, Inc. Sarasota, Florida

Figure 2



## PREDICTED COVERAGE CONTOURS

AUXILIARY FM STATION KCYY(FM)

SAN ANTONIO, TEXAS

CH 262C 1.31 KW 273 M

du Treil, Lundin & Rackley, Inc Sarasota, Florida