

Bromo Communications, Inc.
Atlanta, Georgia

Reference Site Allocation Study

WEHM - Manorville, NY
Reference Site

REFERENCE			DISPLAY DATES
40 50 23.0 N.	CLASS = A	Int = A	DATA 01-12-07
72 39 30.0 W.	Current	Spacings	SEARCH 01-13-07
----- Channel 225 - 92.9 MHz -----			

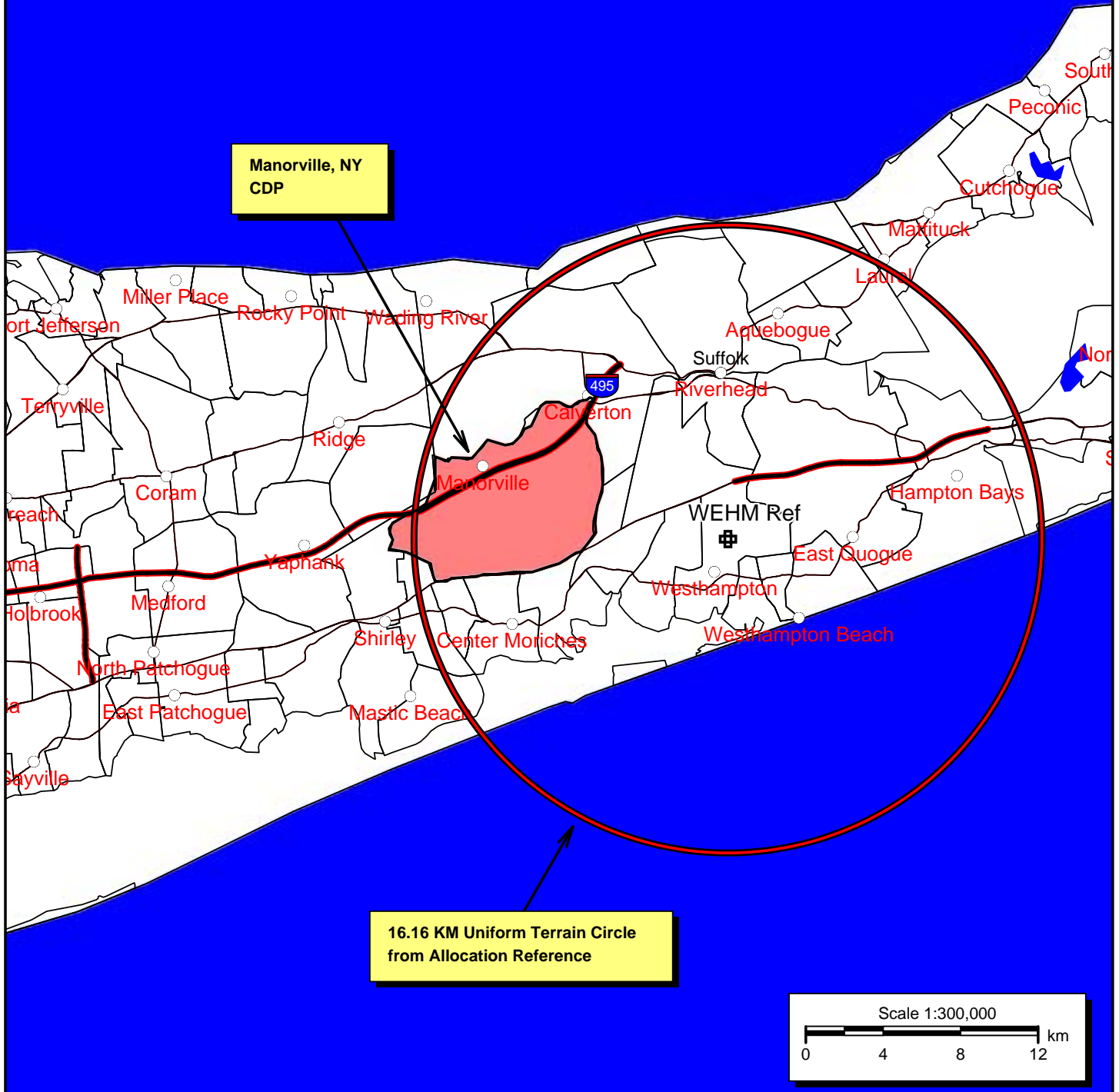
Call		Channel	Location		Azi	Dist	FCC	Margin
WEHM	LIC	225A	Southampton	NY	64.2	7.61	115.0	-107.39
WEHM	CP	225A	Southampton	NY	64.2	7.61	115.0	-107.39
WPAT-FM	APP-N	226B	Paterson	NJ	265.2	112.52	113.0	-0.48*
WPAT-FM	LIC	226B	Paterson	NJ	263.3	115.29	113.0	2.29
WWYZ	LIC	223B	Waterbury	CT	349.1	81.84	69.0	12.84
WZAA	LIC-Z	224A	Garden City	NY	264.5	89.59	72.0	17.59
WBOS	LIC-N	225B	Brookline	MA	37.5	212.79	178.0	34.79
WHYN-FM	LIC	226B	Springfield	MA	0.3	155.64	113.0	42.64
WFNY-FM	LIC	222B	New York	NY	265.2	112.52	69.0	43.52
WBPM	LIC-Z	225A	Saugerties	NY	318.8	170.96	115.0	55.96
WVIP	LIC	228A	New Rochelle	NY	278.2	100.68	31.0	69.68

* Rounds to no shortage

Reference Coordinates:
40 50 23 N
72 39 30 W

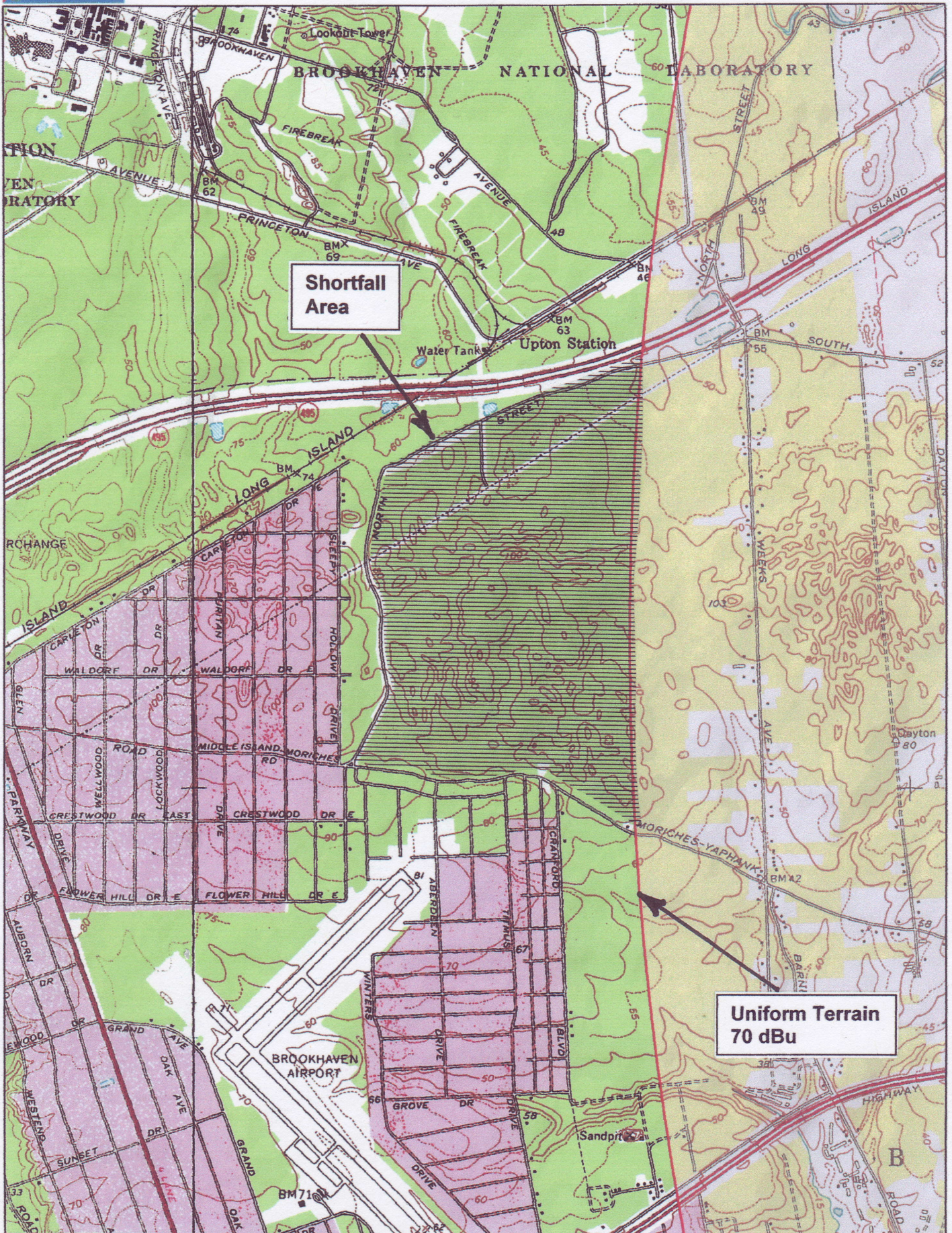
100% of the population of Manorville
is within the hypothetical 70 dBu
contour from the allocation reference.

Manorville, NY
CDP



Hypothetical City Grade Contour WEHM - 141 M HAAT - 3.1 KW (DA) Manorville, NY

Bromo Communications, Inc.
Atlanta, Georgia
January 2007



MAPQUEST.



Aerial Map

In this exhibit all area above the Moriches-Middle Island Road is in the shortfall area.

WEHM – 141 M HAAT – 3.1 KW (DA)
Manorville, NY
January 2007

BROMO
COMMUNICATIONS

BROADCAST
TECHNICAL CONSULTANTS