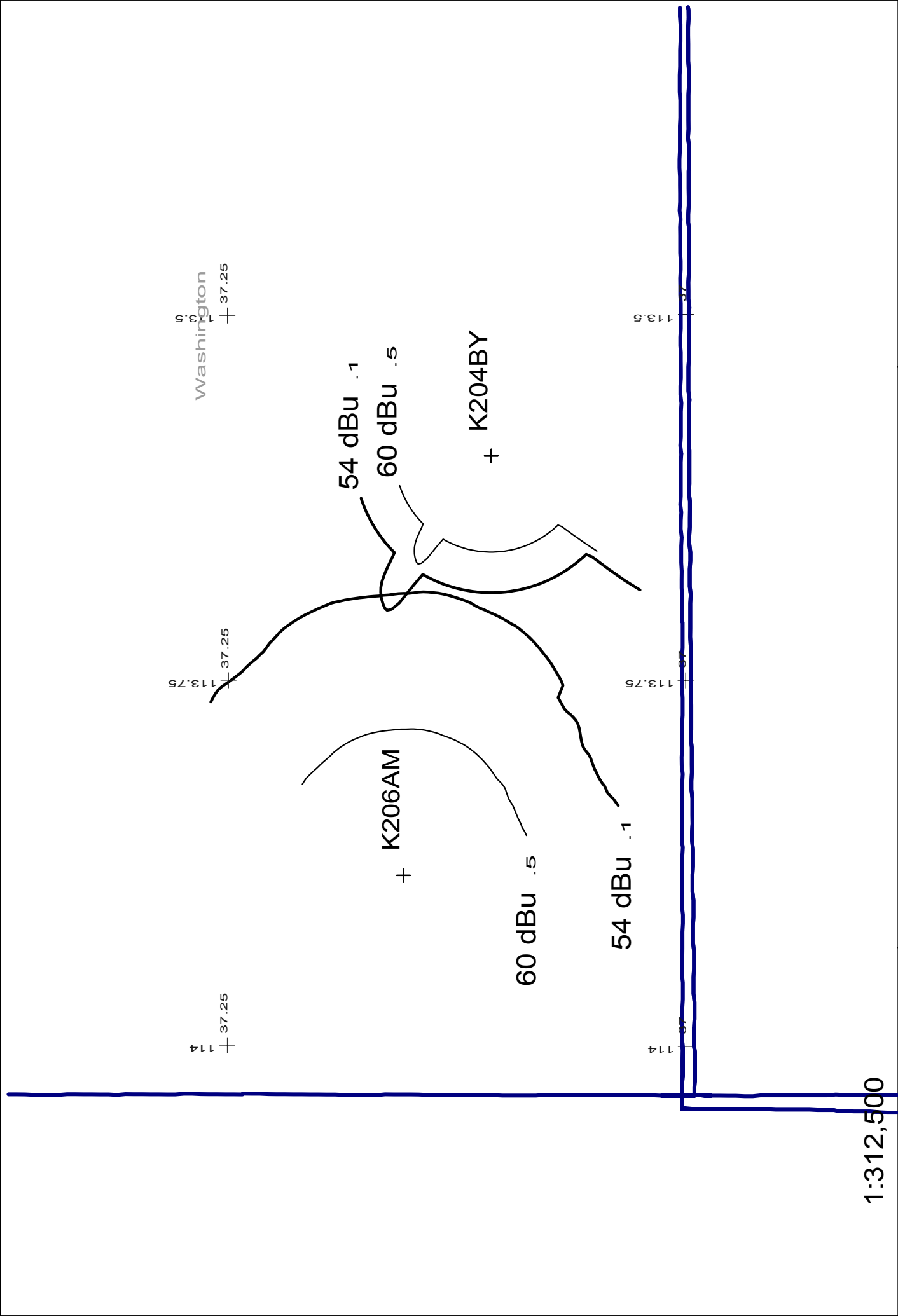


Utah State University

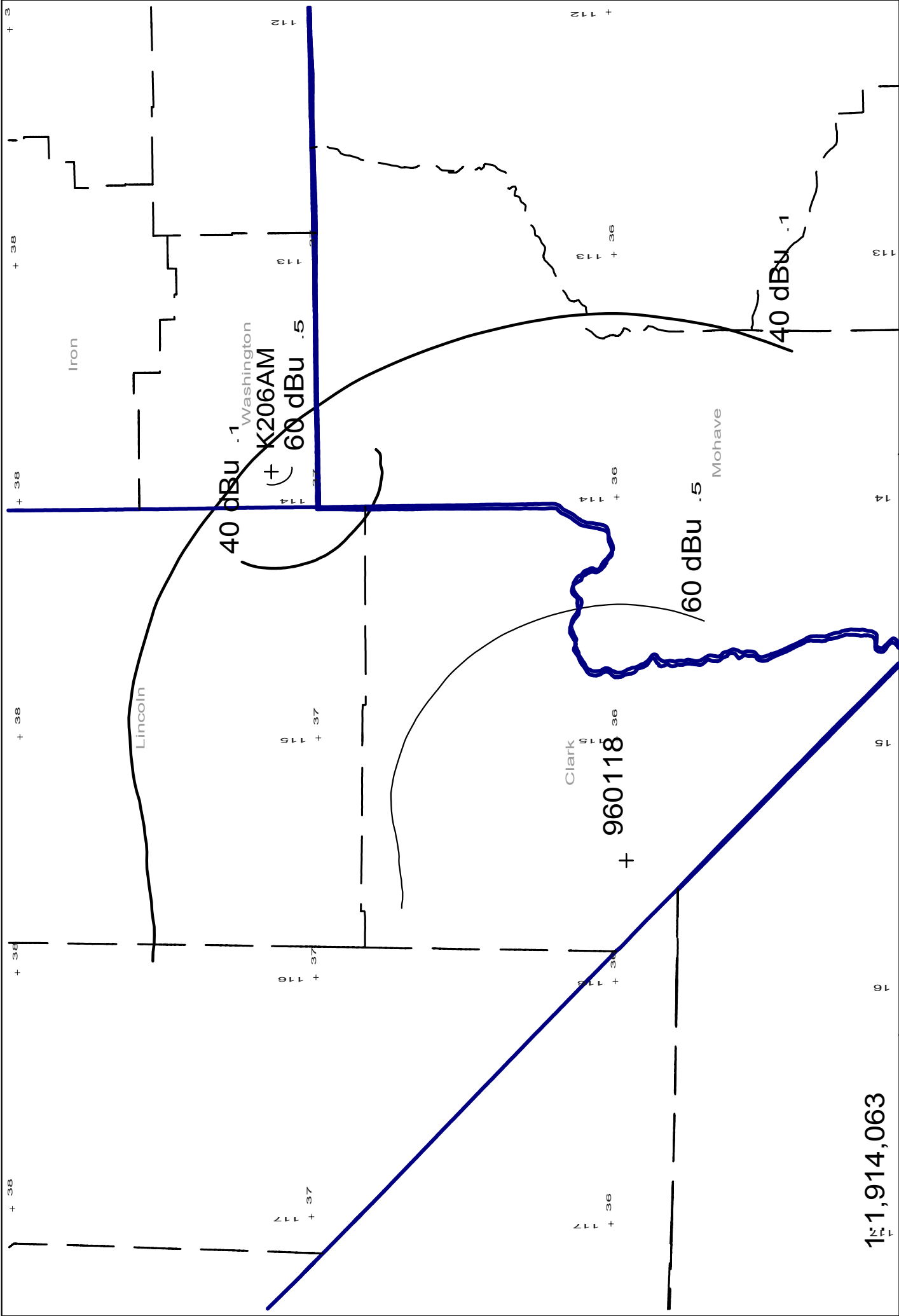
REFERENCE CH# 205D - 88.9 MHz, Pwr= 0.002 kw, HAAT=1078.0 M, COR= 2344 M DISPLAY DATES
 37 09 15 N Average Protected F(50-50)= 8.82 km DATA 10-10-02
 113 53 00 W Ave. F(50-10) 40 dBu= 45.4 54 dBu= 16.8 80 dBu= 1.0 100 dBu= .1 SEARCH 11-19-02

CH CITY	CALL	TYPE STATE	AZI. <--	DIST FILE #	LAT. LNG.	Pwr(kw) HAAT(M)	COR(M) INT(km)	PRO(km) LICENSEE	*IN* (Overlap in km)	*OUT*
206D Washington	K206AM	LIC DVN UT	0.0 180.0	0.00 BLFT19931101TB	37 09 15 113 53 00	0.010 1078	2344 29.5	17.4 Utah State University	-38.30<	-34.26<
207A St. George > Reference HAAT at	*990510	APP CX UT	98.8 278.8	27.91 BPED19990510ME	37 06 55 113 34 23	0.900 20	954 1.6	9.9 Educational Media Foundati	17.39	17.91
Pro. Dist. = 8.91 km, Int Dist. = 0.1 km										
203C1 Mesquite > Reference HAAT at	*950512	CP DVX NV	230.0 50.0	76.77 BPED19950512MA	36 42 33 114 32 35	100.000 167	880 7.5	60.5 Southern Nevada Ed Broadca	63.85	16.20
Pro. Dist. = 5.44 km, Int Dist. = 0.06 km										
205D Parowan, Etc. > Reference HAAT at	*K205BS	LIC HN UT	39.6 219.6	70.28 BLFT19900809TB	37 38 25 113 22 29	0.071 286	2245 52.4	16.0 Faith Communications Corp.	9.74	11.23
Pro. Dist. = 8.19 km, Int Dist. = 43.01 km										
204D St. George > Reference HAAT at	*K204BY	LIC CN UT	101.7 281.7	26.02 BLFT19940726TI	37 06 23 113 35 48	0.115 -17	969 8.3	5.8 American Family Associatio	8.83	3.06
Pro. Dist. = 8.88 km, Int Dist. = 17.12 km										
204D Mesquite > Reference HAAT at	*K204AT	LIC DHN NV	203.9 23.9	41.50 BLFT19860414TF	36 48 45 114 04 22	0.000 -112	561 1.0	0.5 Nevada Public Radio Corpor	33.96	28.90
Pro. Dist. = 6.53 km, Int Dist. = 12.09 km										
207D St. George > Reference HAAT at	*K207DE	LIC C UT	134.3 314.3	48.80 BLFT20010329ACX	36 50 49 113 29 28	0.010 762	1942 0.2	15.3 Educational Media Foundati	40.42	33.36
Pro. Dist. = 8.16 km, Int Dist. = 0.1 km										
207D St. George > Reference HAAT at	*K207DE	CP C UT	134.3 314.3	48.80 BMPFT20020408ABJ	36 50 49 113 29 28	0.010 762	1942 0.2	15.3 Educational Media Foundati	40.42	33.36
Pro. Dist. = 8.16 km, Int Dist. = 0.1 km										
205C Las Vegas > Reference HAAT at	*960118	CP CX NV	228.1 48.1	195.80 BPED19960118MK	35 58 02 115 30 06	23.000 1410	2628 203.8	95.4 Nevada Public Radio Corpor	-13.51<	63.00
Pro. Dist. = 5.51 km, Int Dist. = 37.38 km										
204D Moapa, Etc. > Reference HAAT at	*K204AO	LIC HN NV	227.5 47.5	76.93 BLFT19850325TE	36 41 07 114 31 09	0.750 69	719 21.0	14.0 Nevada Public Radio Corpor	50.45	52.31
Pro. Dist. = 5.53 km, Int Dist. = 10.6 km										
203D Caliente > Reference HAAT at	*K203DR	LIC C NV	313.0 133.0	76.32 BLFT20020111AAL	37 37 13 114 31 01	0.080 -225	1439 0.6	5.3 Nevada Public Radio Corp.	70.63	70.94
Pro. Dist. = 5.07 km, Int Dist. = 0.05 km										
06NT Cane Beds,az/hillda	NEW	AP D N UT	174.3 354.3	28.00 BNPTTV20000828BE	36 54 11 113 51 08	0.090 949	1529 0.0	60.3 University Of Utah	To Grd B=	-32.32

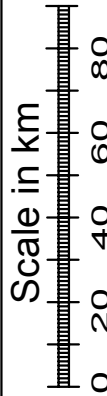
"*" = ERP and HAAT on direct line to and from reference station. "<" = Contour overlap



<p>Scale in km</p> <p>0 10 20</p>	<p>K206AM 205D .002kW 2344M AMSL</p> <p>K204BY 204D .115kW 969M AMSL</p>	<p>Exhibit 10</p> <p>G.F. Haertig - 11/02</p>
-----------------------------------	--	---



11,914,063



K206AM 205D .002kW 2344M AMSL
960118 205C 23kW 2628M AMSL

Exhibit 10
G.F. Haertig - 11/02