

Channel Study

REFERENCE CH# 268D - 101.5 MHz, Pwr= 0.025 kW DA, HAAT= 411.0 M, COR= 1165 MDISPLAY DATES
 42 17 51.0 N. Average Protected F(50-50)= 14.7 km DATA 03-15-12
 122 44 59.0 W. Standard Directional SEARCH 03-15-12

CH CITY	CALL	TYPE STATE	ANT STATE	AZI. <--	DIST FILE #	LAT. LNG.	Pwr(kW) HAAT(M)	INT(km) COR(M)	PRO(km) LICENSEE	*IN* (Overlap in km)	*OUT*
270C Ashland	KCMX-FM	LIC	CX OR	48.1 228.1	0.2 BLH20051128AOB	42 17 55.0 122 44 53.0	42.000 448	9.3 1206	72.8 Mapleton License Of Medfor	-12.9*< -72.7*<	
266C3 Talent	KLMD	RSV-A	OR	323.9 143.9	0.0	42 17 52.0 122 45 00.0	25.000 100	4.7 857	44.1 Mcdaniel, James D	-8.7*< -44.1*<	
266C3 Talent	KLMD	APP	CX OR	323.9 143.9	0.0 BPH20120210AAH	42 17 52.0 122 45 00.0	1.400 408	2.5 1165	40.6 Mcdaniel, James D	-6.4*< -40.6*<	
268C1 Alturas	AL5375	VAC	CA	125.2 306.3	167.7 RM11176	41 25 00.0 121 06 32.0	100.000 299	174.2 1733	73.8 George S. Flinn, Jr.	-10.6*< 80.6	
268D Grants Pass, Etc.	K268BZ	LIC	DH OR	293.2 112.9	49.5 BLFT20100915AAT	42 28 17.0 123 18 12.0	0.047 224	36.9 733	11.1 Oregon St Board Of Higher	6.8 9.2	
266D Rogue River	K266AC	LIC	DCN OR	293.4 113.1	41.7 BLFT19950113TA	42 26 44.0 123 12 56.0	0.250 600	1.1 1142	33.5 Bicoastal Media Licenses V	34.9 8.1	
268D Keno	629947	APP	V OR	111.3 291.8	69.2 BNPFT20030310BHH	42 04 10.0 121 58 12.0	0.010 670	51.7 2015	14.1 Calvary Chapel Of Twin Fal	15.9 50.5	
268C Eureka	KEKA-FM	LIC	CN CA	208.5 27.6	236.5 BLH19831212AA	40 25 12.0 124 05 00.0	89.000 625	207.1 985	97.8 Eureka Broadcasting Co., I	17.0 96.4	
269D Grenada	K269AT	LIC	DC CA	172.2 352.3	76.9 BMLFT20050728AUW	41 36 41.0 122 37 26.0	0.007 783	18.6 1858	10.2 Trc Enterprises, Llc	43.4 44.1	
267D Cave Junction, Etc.	K267AD	LIC	DCN OR	267.0 86.3	75.3 BLFT19961030TH	42 15 29.0 123 39 39.0	0.010 562	21.1 1236	12.7 Steven R. Porter	49.4 54.1	
265D Yreka	K265AI	LIC	DH CA	179.8 359.8	62.5 BLFT20101108ABW	41 44 04.0 122 44 48.0	0.075 745	0.0 1846	0.6 Mapleton License Of Medfor	49.6 61.6	
268C0 Corvallis	KFLY	LIC	C OR	344.2 163.7	230.5 BLH20021007AAP	44 17 28.0 123 32 18.0	28.000 707	174.2 1038	81.7 Bicoastal Media Licenses V	51.3 125.7	
265D Happy Camp	K265AF	LIC	DHN CA	225.8 45.4	69.8 BLFT19780918IM	41 51 30.0 123 21 13.0	0.060 526	0.1 1428	5.2 Slater Butte Translator Co	60.8 64.5	

Terrain database is NGDC 30 SEC, R= 73.215 qualifying spacings or FCC minimum spacings in KM, M= Margin in

KM

Contour distances are on direct line to and from reference station. Reference Zone= West Zone, Co to 3rd adjacent.

Ant Column: (D= DA Standard, Z= DA 73.215, N= Not DA 73.215, _= Omni), Polarization (C,H,V,E), Beamtilt(Y,N,X)

""affixed to 'IN' or 'OUT' values = site inside protected contour.

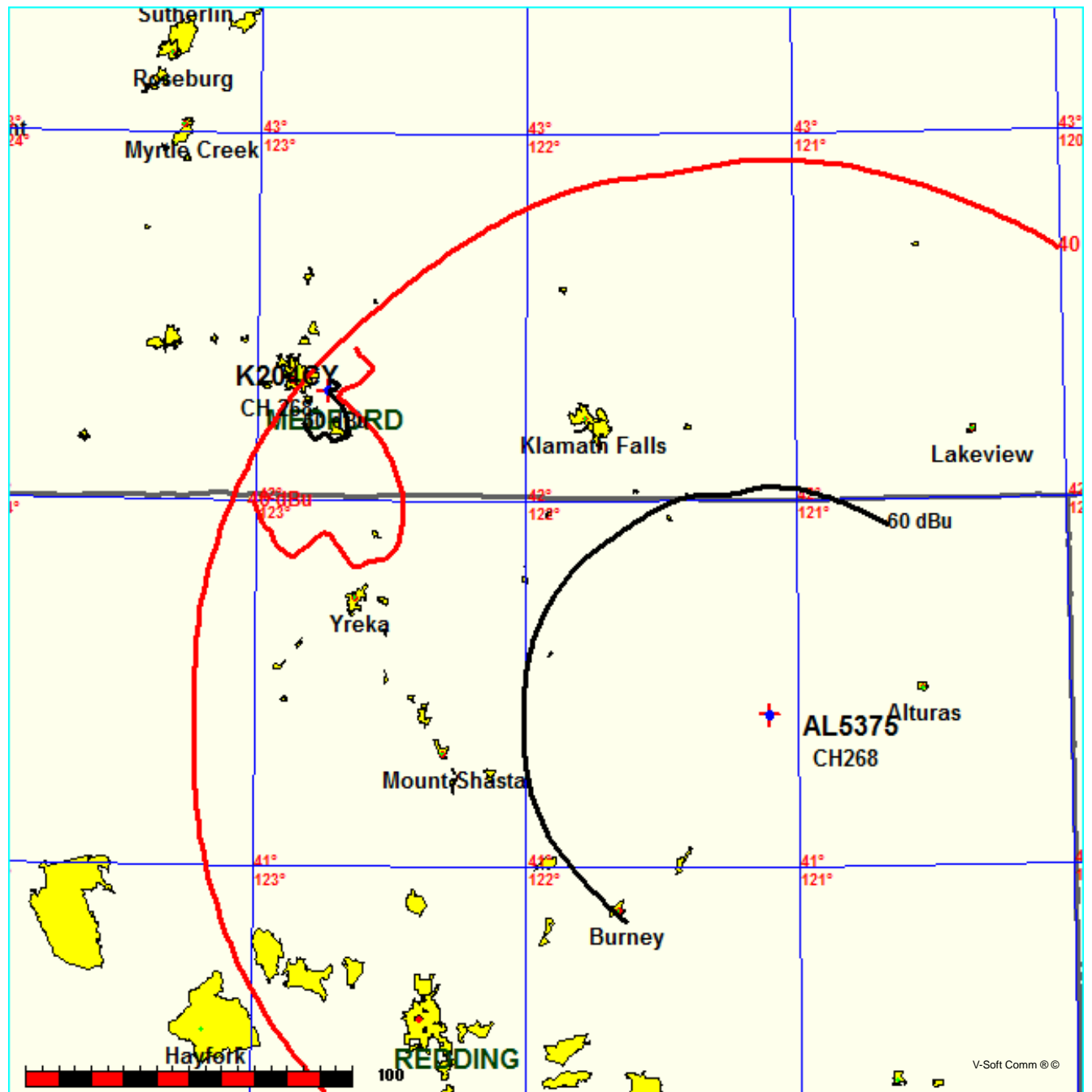
< = Contour Overlap

Educational Media Foundation

FMCommander Single Allocation Study - 03-15-2012 - NGDC 30 SEC
K204CY's Overlaps (In= -10.58 km, Out= 80.58 km)

K204CY CH 268 D DA
Lat= 42 17 51.0, Lng= 122 44 59.0
0.025 kW 411 M HAAT, 1165 M COR
Prot.= 60 dBu, Intef.= 40 dBu

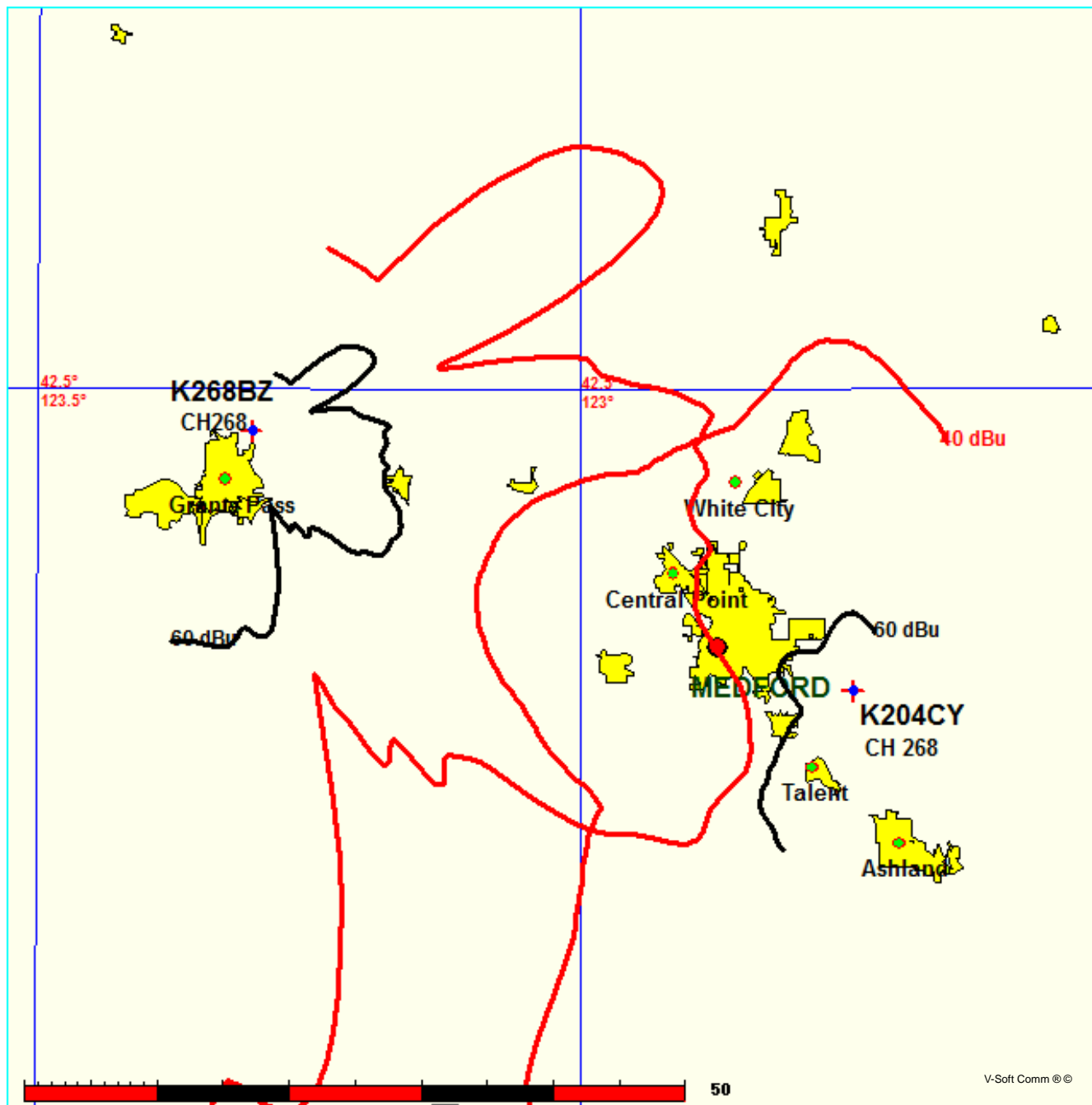
AL5375 CH 268 C1 RM11176
Lat= 41 25 00.0, Lng= 121 06 32.0
100.0 kW 299 M HAAT, 1732.7 M COR
Prot.= 60 dBu, Intef.= 40 dBu



FMCommander Single Allocation Study - 03-15-2012 - NGDC 30 SEC
K204CY's Overlaps (In= 6.83 km, Out= 9.2 km)

K204CY CH 268 D DA
Lat= 42 17 51.0, Lng= 122 44 59.0
0.025 kW 411 M HAAT, 1165 M COR
Prot.= 60 dBu, Intef.= 40 dBu

K268BZ CH 268 D DA BLFT20100915AAT
Lat= 42 28 17.0, Lng= 123 18 12.0
0.047 kW 224.2 M HAAT, 733 M COR
Prot.= 60 dBu, Intef.= 40 dBu

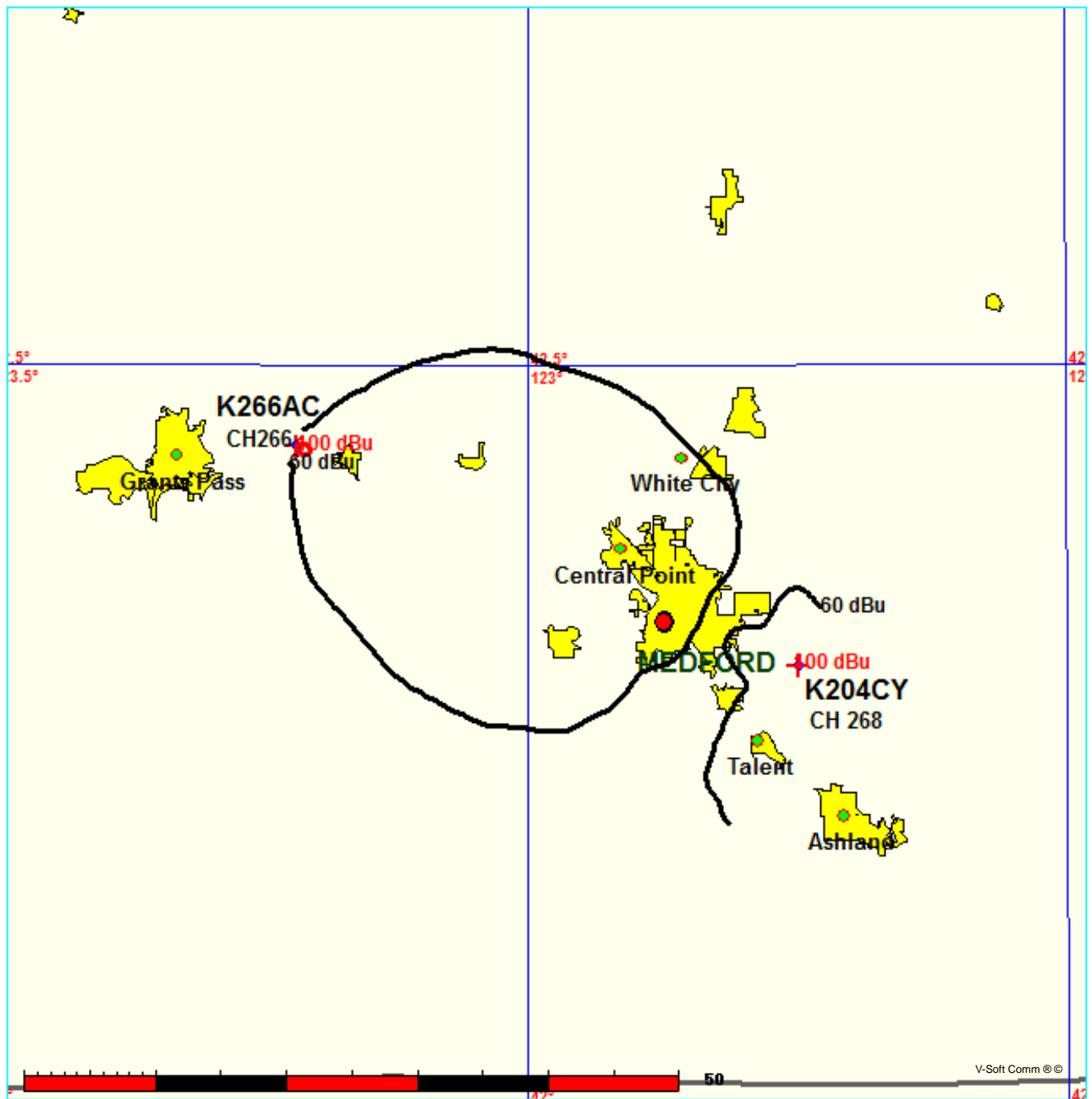


Educational Media Foundation

FMCommander Single Allocation Study - 03-15-2012 - NGDC 30 SEC
K204CY's Overlaps (In= 34.93 km, Out= 8.15 km)

K204CY CH 268 D DA
Lat= 42 17 51.0, Lng= 122 44 59.0
0.025 kW 411 M HAAT, 1165 M COR
Prot.= 60 dBu, Intef.= 100 dBu

K266AC CH 266 D DA BLFT19950113TA
Lat= 42 26 44.0, Lng= 123 12 56.0
0.25 kW 600 M HAAT, 1142 M COR
Prot.= 60 dBu, Intef.= 100 dBu



Compliance with C.F.R. 74.1204

The proposed FM Translator is located within the protected 60 dBu contour of second adjacent channel station KCMX, channel 270C, Ashland, OR. According to 74.1204(a)(3), in order to protect second and third adjacent facilities, the difference in dBu between the two facilities must not exceed 40dBu.

The proposed ERP for K204CY:	25 watts
The proposed COR for K204CY:	15 meters
KCMX F(50/50) contour at proposed site:	137.8 dBu
The F(50/10) contour of proposed K204CY	177.8 dBu
The predicted distance to K204CY interference contour:	0.1 meters

The signal is predicted to not reach the ground. As can be seen in Exhibit 13–A1, there are no regularly occupied structures at the base of the tower and there are no structures which could be tall enough to enter the 0.1 meter aperture.

Therefore, EMF respectfully requests a waiver of C.F.R. 74.1204 based on no population within the area of predicted interference.

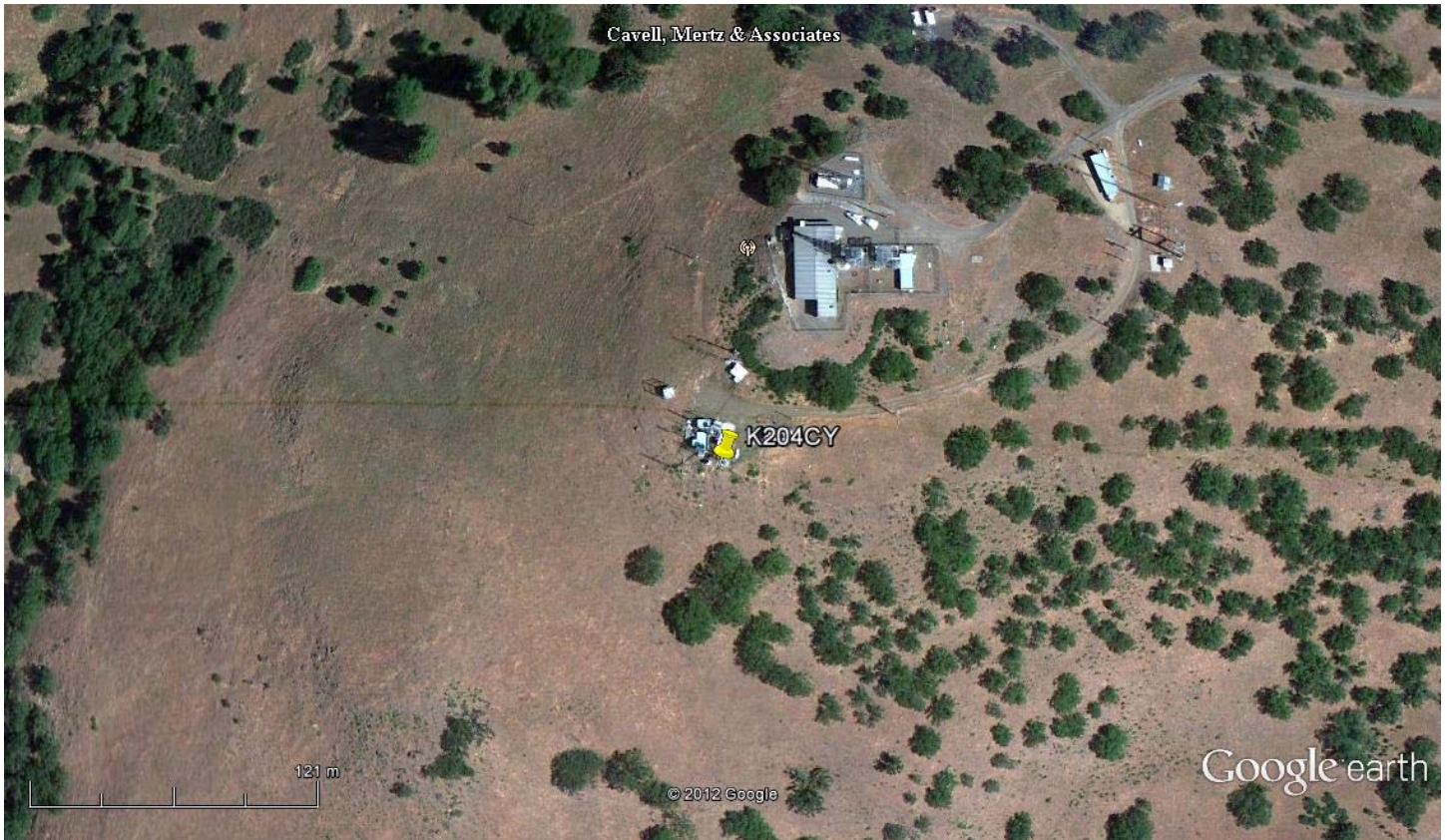
Compliance with C.F.R. 74.1204

The proposed FM Translator is located within the protected 60 dBu contour of second adjacent channel station KLMD.A, channel 266C3, Talent, OR. According to 74.1204(a)(3), in order to protect second and third adjacent facilities, the difference in dBu between the two facilities must not exceed 40dBu.

The proposed ERP for K204CY:	25 watts
The proposed COR for K204CY:	15 meters
KLMD.A F(50/50) contour at proposed site:	136.7 dBu
The F(50/10) contour of proposed K204CY	176.7 dBu
The predicted distance to K204CY interference contour:	0.1 meters

The signal is predicted to not reach the ground. As can be seen in Exhibit 13–A3, there are no regularly occupied structures at the base of the tower and there are no structures which could be tall enough to enter the 0.1 meter aperture.

Therefore, EMF respectfully requests a waiver of C.F.R. 74.1204 based on no population within the area of predicted interference.



Google earth

feet 800
meters 200



NAD 27
42 17 51
122 44 59