



April 25, 2007

Warren G. Shulz
WZZN
190 N. State St.
Chicago, IL 60601

Re: Survey Order #0610013
WZZN Antenna Alignment on
Center tower WMVP-AM directional
Antenna array,
Village of Buffalo Grove, IL

Dear Mr. Shulz,

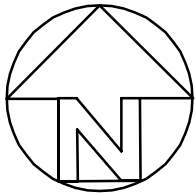
In the course of performing the update of our survey of the above referenced site on November 2, 2006, we observed the azimuth orientation of the antenna at 82° 59' 14" from true North.

Sincerely,

Gregory J. Hannon, PLS
President
Chicago Guarantee Survey Company



EXPIRES 11/30/2008

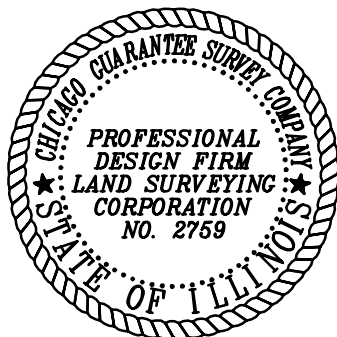
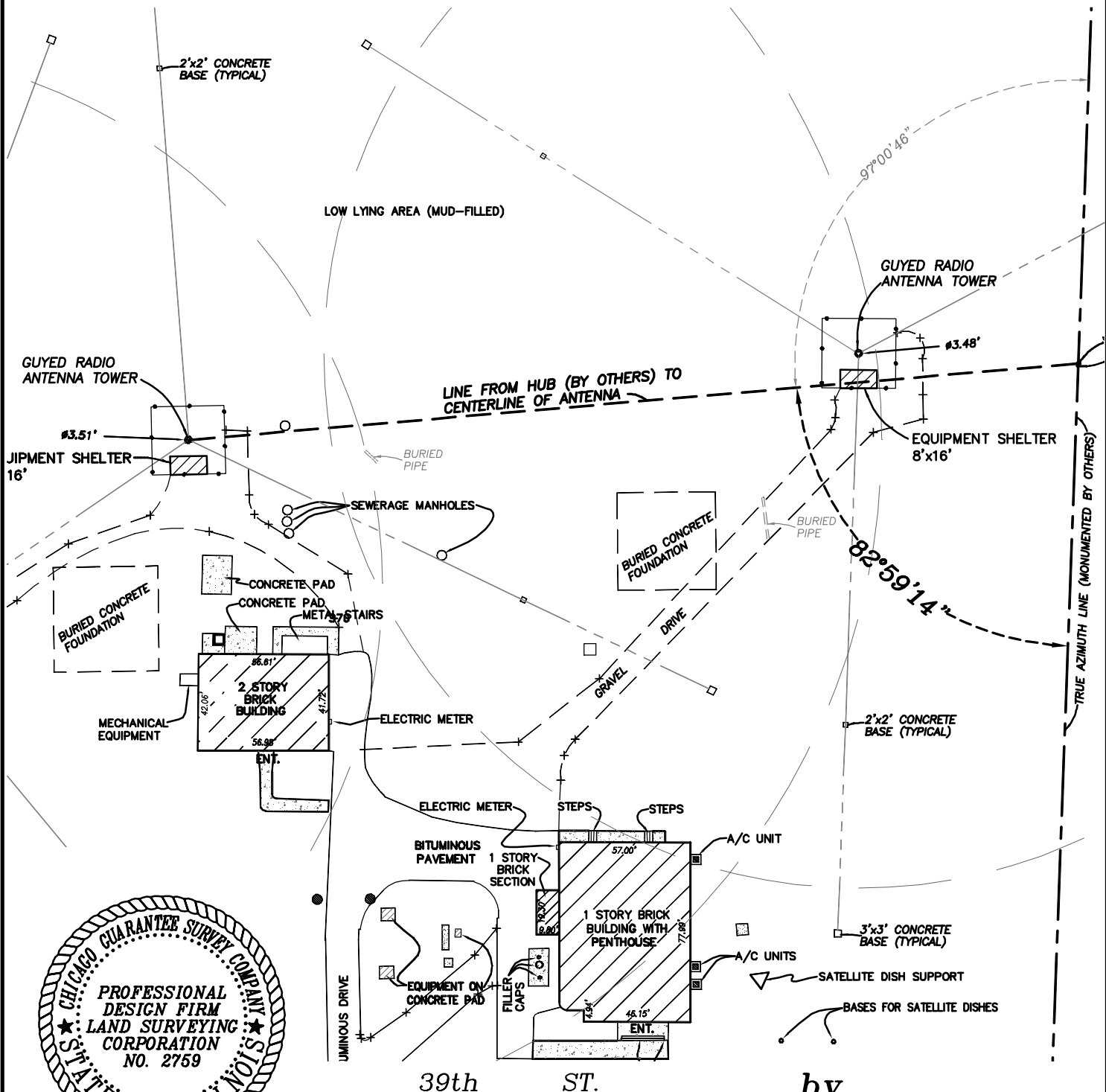


SCALE: 1" = 60'

EXHIBIT

SHOWING WZZN-FM DIRECTIONAL ANTENNA AZIMUTH ORIENTATION AS MEASURED AT WMVP-AM CENTER TOWER, VILLAGE OF DOWNERS GROVE, ILLINOIS.

NOTE: AZIMUTH ORIENTATION IS REFERENCED PER SHIVELY LABS DRAWING: MODEL-6810-3-DIRECTIONAL ANTENNA, DATED 5-17-06 AND SUPPLIED BY CLIENT.



EXPIRES 04/30/2007

REV. FEB. 28, 2007 TO REF. SHIVELY DWG

Order No.: 0610013

Ordered by: WZZN

REV. 3/19/07-SHOW AZIMUTH ANGLE COMPLIMENT

CHICAGO GUARANTEE SURVEY COMPANY
601 S. LA SALLE ST., CHICAGO, ILLINOIS 60605
TELEPHONE: (312) 986-9445 FAX: (312) 986-9679
DATE: FEBRUARY 9th, 2007

BY:

Gregory J. H...

PRESIDENT