

GLORY COMMUNICATIONS, INC.

W240AX, COLUMBIA, SOUTH CAROLINA

TABLE OF ATTACHMENTS

ENGINEERING NARRATIVE

CHANNEL STUDY

DISTANCES TO THE WQXL(AM) 2 mV/m CONTOUR

MAP OF A 25 MILE RADIUS ABOUT WQXL(AM) TRANSMITTER SITE AND  
THE PROPOSED W240AX 60 dBu CONTOUR (FIGURE 1)

MAP OF THE WQXL DAYTIME 2 mV/m CONTOUR AND THE PROPOSED  
W240AX 60 dBu CONTOUR (FIGURE 2)

ALLOCATION STUDIES

WHQC, CHANNEL 241C, SHELBY, NC (FIGURE 3)

WLTY, CHANNEL 244C3, CAYCE, SC (FIGURE 4)

W241BI, ORANGEBURG, SC (FIGURE 5)

TOPOGRAPHIC SITE MAP (FIGURE 6)

TOWER SKETCH (FIGURE 7)

GLORY COMMUNICATIONS, INC.

W240AX

COLUMBIA, SOUTH CAROLINA

ENGINEERING NARRATIVE

The purpose of this application is to change the location and height of translator station W240AX and to change the channel from 240D to 241D. W240AX provides "Fill-In" service for co-owned AM station WQXL

As shown on the attached Allocation Table, this proposal meets all protection criteria except for WLTV, channel 244C3, Cayce, South Carolina. A waiver is requested for this overlap as the WLTV signal at the proposed site is 94.4 dBu, and the interfering signal is 134.4 dBu (f(50/10)). The distance to the proposed 134.4 dBu contour is 21.1 meters, and the proposed antenna is 119 meters above ground, therefore, there will be no interference to any potential listener to WLTV.

Attachments include a map showing the proposed W240AX 60 dBu contour and a circle with a 25 mile radius drawn about the WQXL transmitter site, a map of the W240AX 60 dBu and the WQXL 2 mV/m contours, relevant allocation studies, a topographic site map and a tower sketch.

William Culpepper & Associates,  
Charlotte, NC

W240AX, COLUMBIA, SOUTH CAROLINA FOR CHANNEL 241

Glory Communications, Inc.

REFERENCE CH# 241D - 96.1 MHz, Pwr= 0.25 kW, HAAT= 155.0 M, COR= 235 M  
34 02 38.0 N. Average Protected F(50-50)= 16.22 km  
80 59 51.0 W. Omni-directional

DISPLAY DATES  
DATA 05-24-13  
SEARCH 06-18-13

CH CITY	CALL	TYPE ANT STATE	AZI <--	DI ST FILE #	LAT LNG	PWR(kW) HAAT(M)	INT(km) COR(M)	PRO(km) LICENSEE	*IN* (Overlap in km)	*OUT*
241C Shelby	WHQC	CP DCY NC	354.4 174.3	147.28 BPH20101122ABH	35 21 44.0 81 09 19.0	100.000 533	193.9 768	89.3 Clear Channel	-61.9*	7.3 Broadcasting
241C Shelby	WHQC	LIC DCY NC	354.4 174.3	147.28 BLH19870206KJ	35 21 44.0 81 09 19.0	100.000 530	183.0 766	84.3 Clear Channel	-51.0*	12.2 Broadcasting
244C3 Cayce	WLTY	LIC ZCX SC	197.4 17.4	4.53 BLH20050902ABZ	34 00 18.0 81 00 44.0	9.000 132	3.2 199	32.3 Capstar Tx Lic	-16.4*	-28.8*
240D Columbia	W240AX	LIC _C_ SC	203.2 23.2	10.21 BLFT20080603ADF	33 57 34.0 81 02 28.0	0.250 71	13.2 139	9.5 Glory Communications, Inc.	-20.7*	-25.8
241D Orangeburg	W241BI	LIC _C_ SC	167.5 347.5	65.48 BLFT20090925ABA	33 28 08.0 80 50 39.0	0.120 37	19.6 94	5.9 Bible Broadcasting Network	28.0	3.2
242C2 Aiken	WKSP	LIC _CX SC	245.3 64.8	94.60 BLH20020611AAU	33 41 06.0 81 55 36.0	17.500 258	72.5 388	49.0 Capstar Tx Lic	5.9	21.0
294C1 Orangeburg	WTCB«	LIC DCN SC	166.3 346.4	30.00 BMLH19981203KA	33 46 52.0 80 55 14.0	100.000 240	0.0 304	0.0 Radio License Holding Cbc,	22.0R	8.0M
238A Wedgefield	WIBZ	LIC _CX SC	100.6 280.9	56.73 BLH20020606AAY	33 56 56.0 80 23 34.0	4.400 118	2.6 174	27.9 Miller Communications, Inc	38.8	27.6
242D Sumter	W242AH	LIC _C_ SC	103.3 283.7	62.01 BLFT20060922AC0	33 54 50.0 80 20 36.0	0.170 33	9.2 79	6.4 Bible Broadcasting Network	37.5	32.7
239A Orangeburg	WQKI -FM	RSV-A _ SC	176.5 356.5	65.74	33 27 13.0 80 57 15.0	6.000 100	2.7 162	27.4 Miller Communications, Inc	45.2	36.5
240L1 Newberry	WWPZ-LP	LIC _ SC	290.1 109.6	75.37 BLL20040421ABA	34 16 27.0 81 46 05.0	0.047 43	8.5 189	5.9 Newberry Minority Broadcas	50.2	44.8
240L1 Hartsville	WHEZ-LP	LIC _ SC	62.7 243.1	83.21 BLL20070425AAP	34 23 05.0 80 11 30.0	0.100 27	9.3 116	6.5 Lighthouse Gospel Network	58.3	53.4
243D Ellenoree	W243CO	LIC _C_ SC	146.0 326.3	74.52 BLFT20091020ABS	33 29 14.0 80 32 54.0	0.027 72	0.4 108	5.9 Roger D. Blume	56.8	67.4
241C2 Forestbrook	WKZQ-FM	LIC NCX SC	105.1 286.2	186.92 BLH20081007ACQ	33 35 27.0 79 02 55.0	8.500 265	113.6 267	46.2 Nm Licensing Lic	58.1	90.8

Terrain database is NGDC 30 SEC , R= 73.215 qualifying spacings or FCC minimum Spacings in KM, M= Margin in KM  
In & Out distances between contours are shown at closest points. Reference zone= East Zone, Co to 3rd adjacent.  
Ant Column: (D= DA Standard, Z= DA 73.215, N= Not DA 73.215, \_= Omni), Polarization (C,H,V,E), Beamtilt(Y,N,X)  
"\*"affixed to 'IN' or 'OUT' values = site inside protected contour.  
« = Station meets FCC minimum distance spacing for its class.

GLORY COMMUNICATIONS, INC.

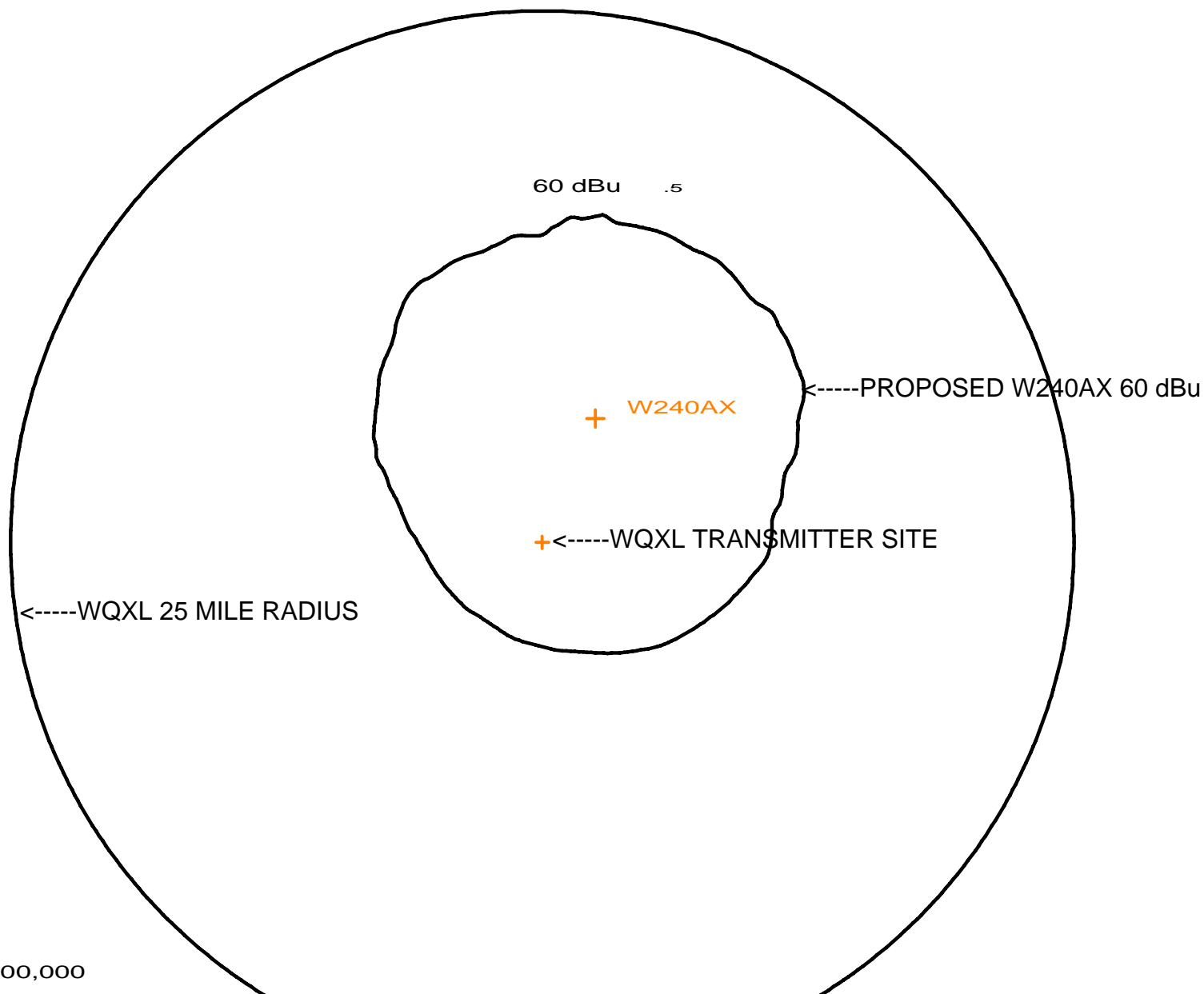
COLUMBIA, SOUTH CAROLINA

DISTANCES TO THE WQXL(AM) 2 mV/m CONTOUR

Azimuth	Radiation (mV/m at one km)	Distances to Contours in km: Contour 2.0 mV/m
0.0	1241.74	25.19
5.0	1241.74	25.19
10.0	1241.74	25.19
15.0	1241.74	25.19
20.0	1241.74	25.19
25.0	1241.74	25.19
30.0	1241.74	25.19
35.0	1241.74	25.19
40.0	1241.74	25.19
45.0	1241.74	25.19
50.0	1241.74	25.19
55.0	1241.74	25.19
60.0	1241.74	25.19
65.0	1241.74	25.19
70.0	1241.74	25.19
75.0	1241.74	25.19
80.0	1241.74	25.19
85.0	1241.74	25.19
90.0	1241.74	25.19
95.0	1241.74	25.19
100.0	1241.74	25.19
105.0	1241.74	25.19
110.0	1241.74	25.71
115.0	1241.74	26.26
120.0	1241.74	26.69
125.0	1241.74	27.03
130.0	1241.74	27.30
135.0	1241.74	27.51
140.0	1241.74	27.66
145.0	1241.74	27.77
150.0	1241.74	27.83
155.0	1241.74	27.77
160.0	1241.74	27.67
165.0	1241.74	27.53
170.0	1241.74	27.33
175.0	1241.74	27.08
180.0	1241.74	26.75
185.0	1241.74	26.33
190.0	1241.74	25.81
195.0	1241.74	25.19
200.0	1241.74	25.19
205.0	1241.74	25.19
210.0	1241.74	25.19
215.0	1241.74	25.19
220.0	1241.74	25.19
225.0	1241.74	25.19
230.0	1241.74	25.19

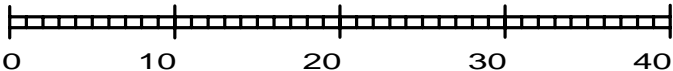
DISTANCES TO THE WQXL(AM) 2 mV/m CONTOUR...(continued)

Azimuth	Radiation (mV/m at one km)	Distances to Contours in km: Contour 2.0 mV/m
-----	-----	-----
235.0	1241.74	25.19
240.0	1241.74	25.19
245.0	1241.74	25.19
250.0	1241.74	25.19
255.0	1241.74	25.19
260.0	1241.74	25.19
265.0	1241.74	25.19
270.0	1241.74	25.19
275.0	1241.74	25.19
280.0	1241.74	25.19
285.0	1241.74	25.19
290.0	1241.74	25.19
295.0	1241.74	25.19
300.0	1241.74	25.19
305.0	1241.74	25.19
310.0	1241.74	25.19
315.0	1241.74	25.19
320.0	1241.74	25.19
325.0	1241.74	25.19
330.0	1241.74	25.19
335.0	1241.74	25.19
340.0	1241.74	25.19
345.0	1241.74	25.19
350.0	1241.74	25.19
355.0	1241.74	25.19



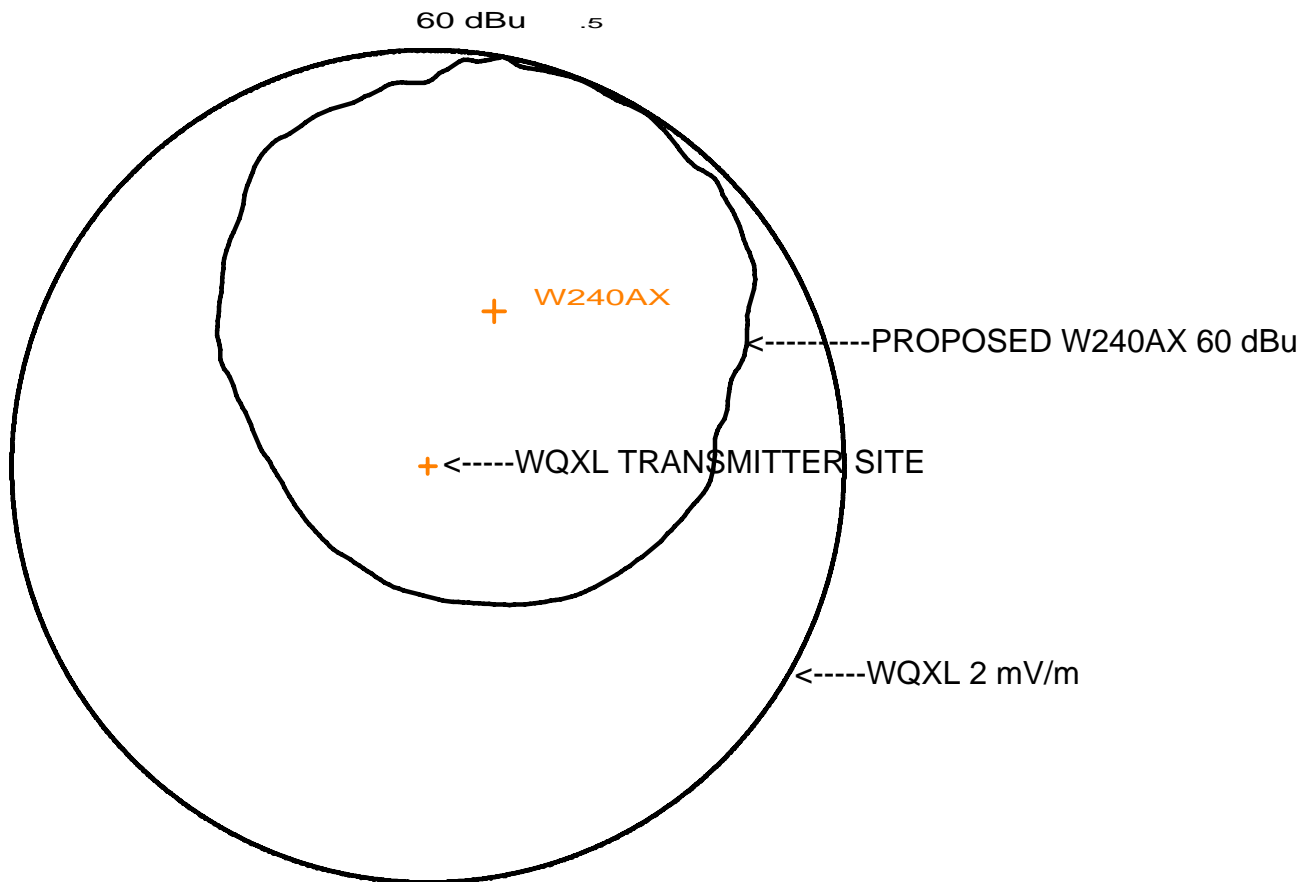
1:500,000

Scale in km



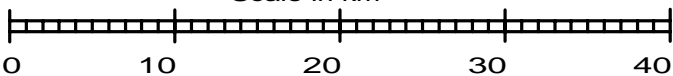
THE PROPOSED W240AX 60 dBu CONTOUR AND A  
25 MILE CIRCLE ABOUT THE WQXL (AM) SITE

W240AX COLUMBIA, SC  
GLORY COMMUNICATIONS



1:500,000

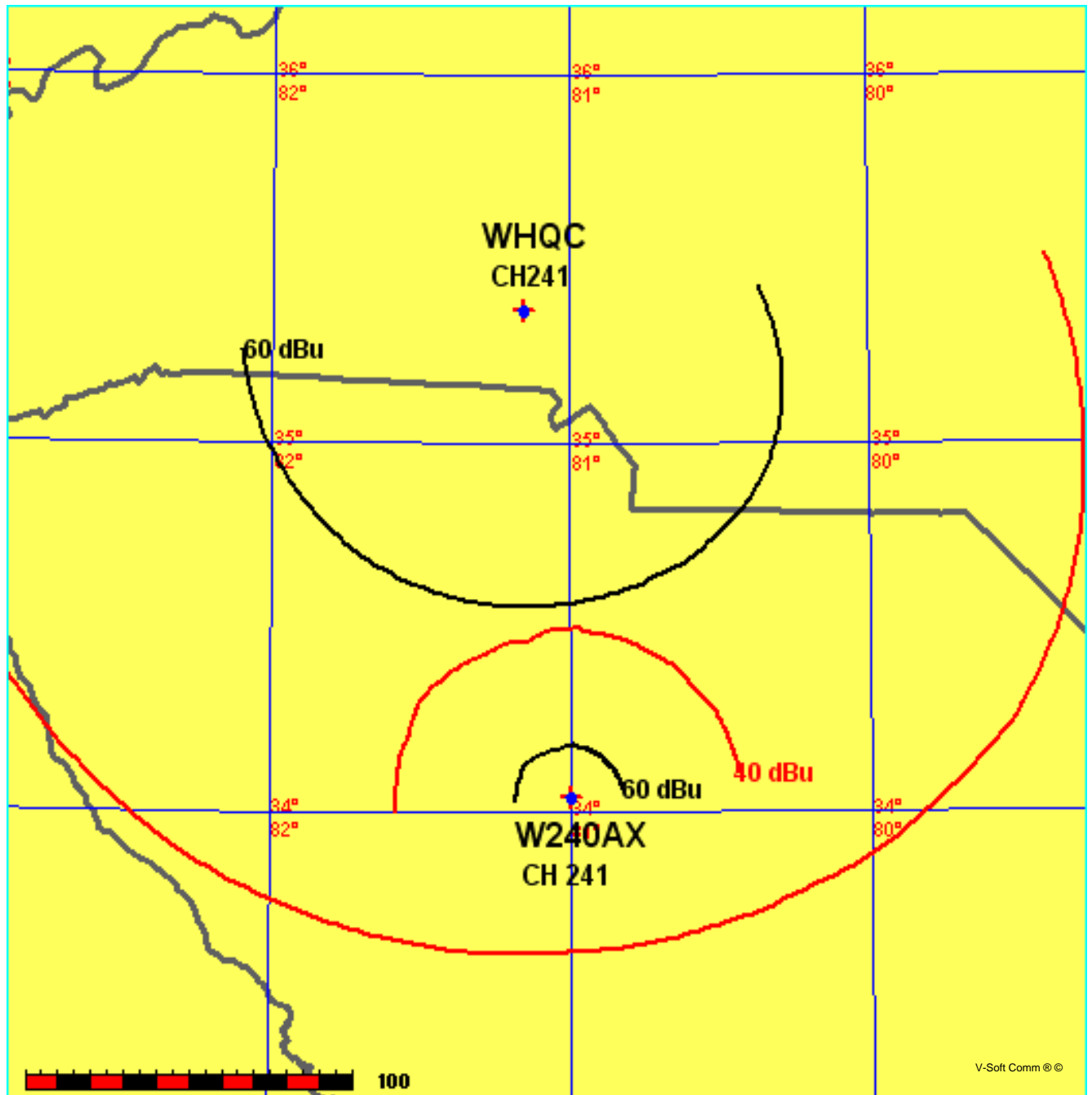
Scale in km



THE PROPOSED W240AX 60 dBu CONTOUR AND  
THE WQXL (AM) 2 mV/m CONTOUR

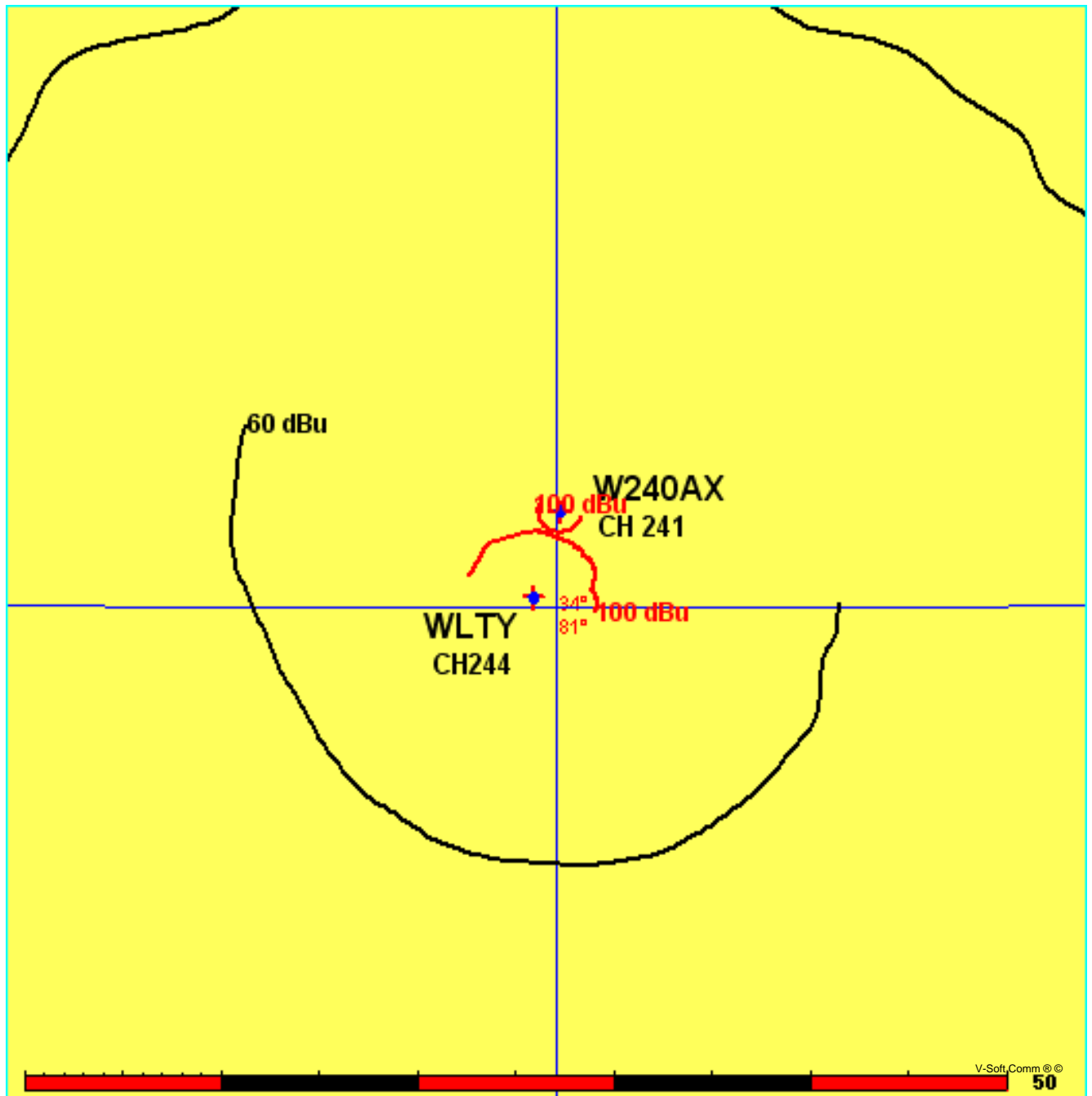
W240AX COLUMBIA, SC  
GLORY COMMUNICATION

PROPOSED W240AX AND WHQC, SHELBY, NC  
GLORY COMMUNICATIONS, INC., COLUMBIA, SC





See waiver request in narrative regarding third-adjacent channel overlap.



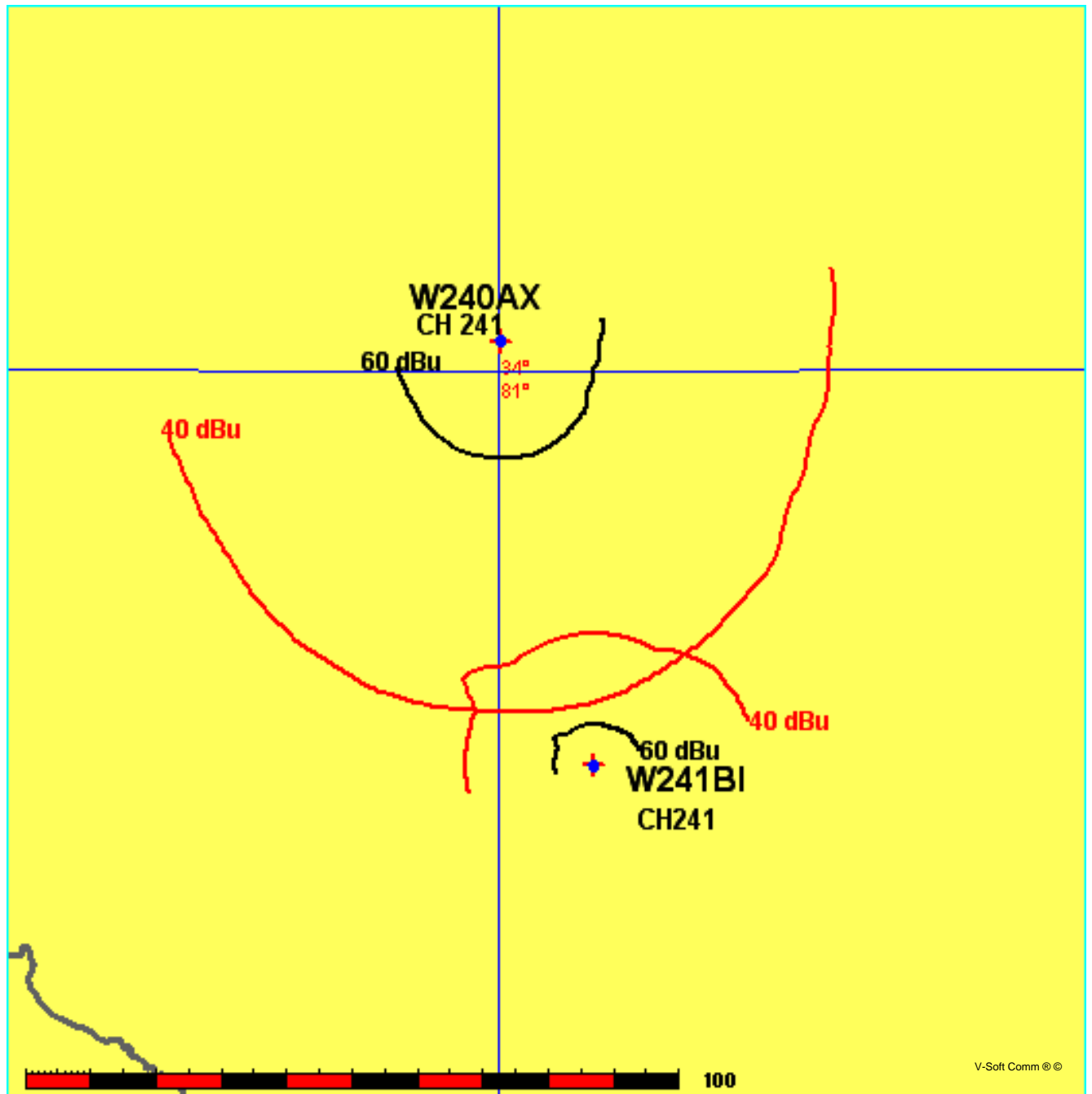




FIGURE 6

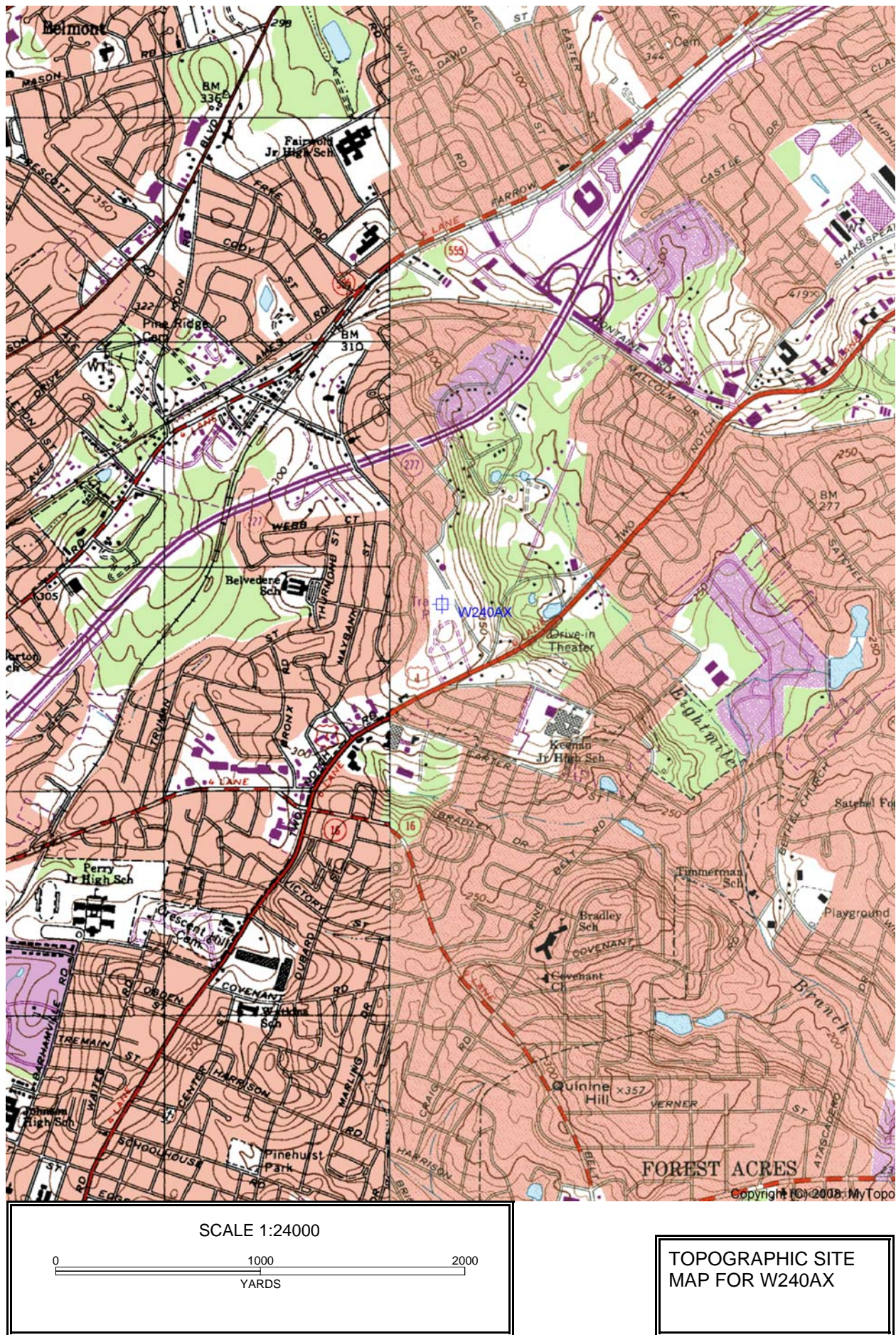
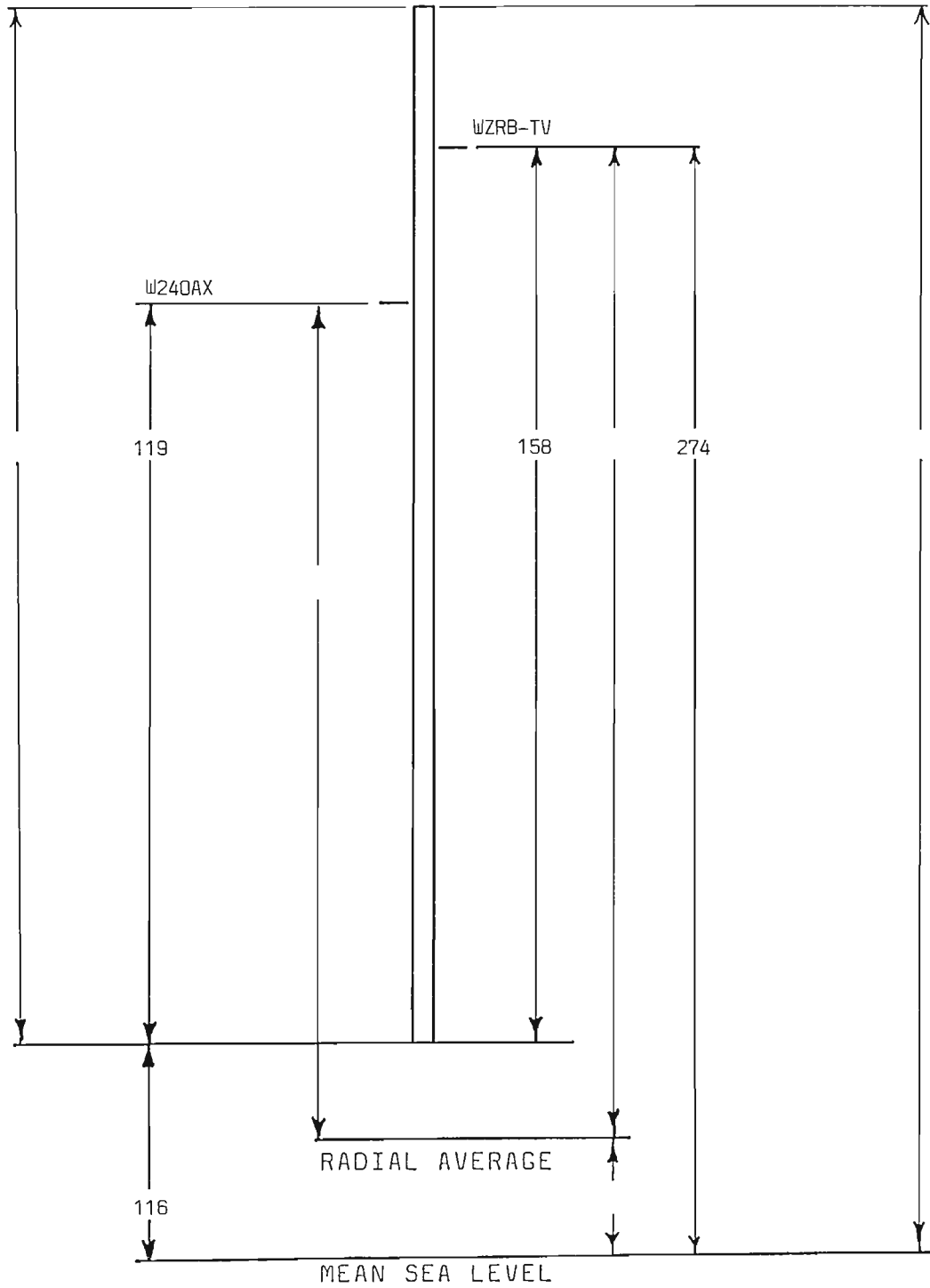




FIGURE 7

W24OAX, COLUMBIA, SC  
ANTENNA AND TOWER ELEVATIONS



Dimensions are in meters.