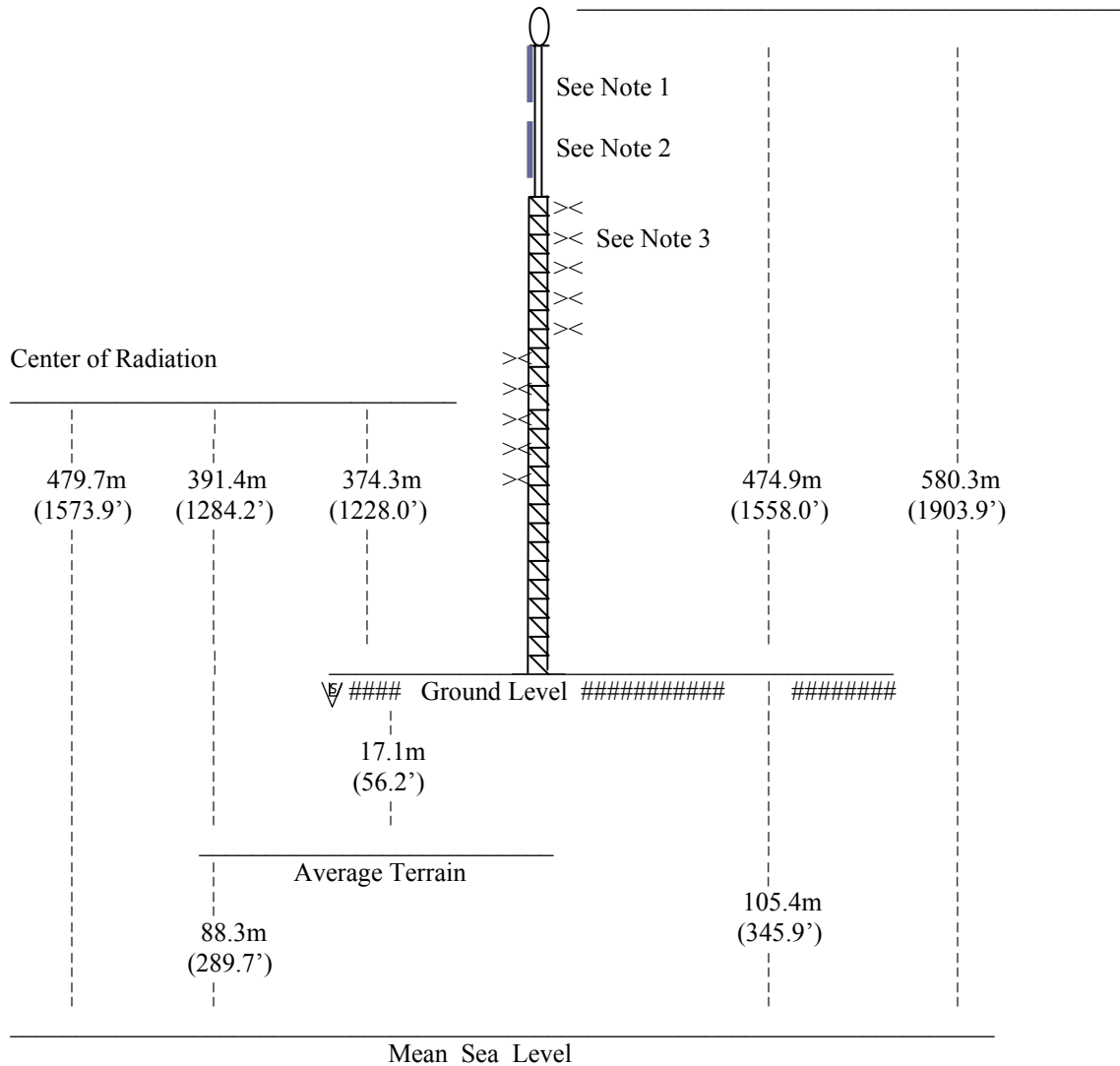


**Engineering Statement
In Support of an
Application for a Construction Permit
WUSJ, Madison, Mississippi
Supporting Structure**



Proposed Location - 32° 11' 29" N. Lat. 90° 24' 22" W. Long. [NAD 27]

NOT DRAWN TO SCALE

ASRN 1046007

Proposed antenna - 10 element antenna (to be used as a common antenna with WJKK (98.7 mHz), 52 kW

Note 1: The WMPN-TV (Digital TV channel 20), 400kW, 467m AGL

Note 2: The WMPN-TV (TV channel 20), 966kW, 452m AGL

Note 3: The WMPN-FM (91.3mHz.), 45kW, 408m AGL