

TECHNICAL EXHIBIT
APPLICATION FOR DTV CONSTRUCTION PERMIT
STATION WTOV-DT
STEUBENVILLE, OHIO
CH 9 30 KW 282 M

Technical Narrative

This Technical Exhibit supports an application for digital television (DTV) station WTOV-DT to increase its effective radiated power from the present 23 kilowatts to 30 kilowatts.

Proposed Facilities

Station WTOV-DT proposes to continue to operate on DTV channel 9 from its licensed DTV transmitter site. The transmitting antenna height above average terrain for the channel 9 DTV operation will remain 282 meters. The proposed WTOV-DT effective radiated power exceeds the Commission's *Appendix B* allocated maximum effective radiated power in some azimuthal directions for WTOV-DT.¹ Therefore, an allocation study was completed to ensure no prohibited interference would occur.

¹ See Seventh Report And Order And Eighth Further Notice Of Proposed Rule Making in the Matter of Advanced Television Systems and their Impact Upon the Existing Television Broadcast Service, MB Docket 87-268, Released August 6, 2007; Adopted August 1, 2007.

The proposed DTV transmitter site will be located atop the WTOV-TV tower. Therefore, the proposed site location is:

40° 20' 33" North Latitude
80° 37' 14" West Longitude

A sketch of antenna and pertinent elevations are included as Figure 1.

The Appendix contains the vertical plane radiation pattern for the proposed antenna system.

Figure 2 is a map showing the proposed DTV predicted coverage contour and the associated DTV appendix B Noise-Limited coverage contour. The extent of the contours have been calculated using the normal FCC prediction method. The Steubenville city limits were derived from information contained in the 2000 U.S. Census of Population and Housing.

Population Served

The herein proposed WTOV-DT facility is predicted to serve 3,760,335 persons, post-transition based upon the 2000 Census. WTOV-DT's associated Appendix B facility is predicted to serve 2,829,000 persons. Therefore, the herein proposed WTOV-DT facility would serve more than 100% of WTOV-DT's Appendix B population.

Domestic Allocation Considerations

The proposed WTOV-DT Channel 9 facility meets the requirements of Section 73.623 of the FCC Rules concerning predicted interference to other Appendix B DTV allotments. Longley-Rice interference analyses were conducted pursuant to the requirements of the FCC Rules; OET Bulletin No. 69; and published FCC guidelines for preparation of such interference analyses. The Longley-Rice interference analyses were conducted using the software developed by du Treil, Lundin & Rackley, Inc. based on the FCC published software routines.² Stations selected for analysis were determined pursuant to the distance requirements outlined in the FCC DTV Processing Guidelines Public Notice. The results of the interference analyses for the proposed WTOV-DT facility are summarized herein at Figure 3. As indicated therein, the proposed facility will meet the 0.5% criterion outlined in the FCC Rules and published guidelines with respect to all considered stations.³

Canadian Allocation Consideration

As the WTOV-DT transmitter site is located within the US/Canadian coordination area, this proposal has been analyzed with respect to Canada. The current WTOV-DT operation has already been coordinated with an effective

2 The duTreil, Lundin & Rackley, Inc. DTV interference analysis program is based on the program and procedures outlined by the FCC in the Sixth Report and Order; subsequent Memorandum Opinion and Order; and FCC OET Bulletin No. 69. A nominal grid size resolution of 2 km was employed.

3 Interference analysis results reflect the net change in interference to a given station considering the interference predicted to occur from all other stations (i.e. "masking") including the allotment facility for WTOV-DT. This properly reflects the net interference change for determining compliance with the FCC 0.5% *de minimis* standard.

radiated power of 23 kilowatts and an antenna height above average terrain of 261 meters at its existing analog transmitter site.

The WTOV-DT facility has a short-spacing toward CBET on Channel 9 at Windsor, Ontario, Canada. The separation distance from WTOV-DT to CBET, considering both its present analog and future digital allotment, is 280.3 kilometers. The required minimum separation distance from WTOV to CBET's analog facility is 283 kilometers, a short-spacing of 2.7 kilometers. The required minimum separation distance from WTOV to CBET's digital allotment is 321 kilometers, a short-spacing of 40.7 kilometers.

Using the Longley-Rice interference calculation procedure outlined within the Letter Of Understanding Between The Federal Communications Commission Of The United States Of America And Industry Canada Related To The Use Of The 54-72 Mhz, 76-88 Mhz, 174-216 Mhz and 470-806 Mhz Bands for the Digital Television Broadcasting Service Along the Common Border, no interference to CBET's analog facility is predicted from the herein proposal. Interference to 8,832 persons (2006 Canadian Census) is predicted to CBET's digital allotment facility. This interference is 1.7% of CBET's digital allotment.

Below is a summary of the Longley-Rice Canadian study to CBET from WTOV:

Study Date: 03/06/2011
Study Start: 12:15:33
CANADIAN INTERFERENCE CAUSED (GRID TYPE)
Cell Size (km): 2.00
Terrain Increment (km): 1.00
Using DTV -> DTV service parameters.
Using contour for service area.
Using 2006 Canadian census population data.

CBET 42-09-09 082-57-05 9(0) 325.000 kw 336.7 m 50.0 % 56.0 dBu
WINDSOR ON
CANTAB CLASS VU
Calculated RCAMSL with HAAT of 150
%Location = 50.00 %Time = 50.00
Area Pop
within Noise Limited Contour 21669.01 492259
not affected by terrain losses 21333.30 492259

WTOV-TV 40-20-33 080-37-14 9(N) 30.000 kw 599 m 10.0 % 33.0 dBu
STEUBENVILLE OH
LIC BLCDT20090507AAC CLASS EX

D/U Baseline: 33.80
%Location = 50.00 %Time = 10.00
Area Pop
Interference 11.99 0(0.000)

CBDDTD 42-09-09 082-57-05 9(0) 26.000 kw 376.7 m 90.0 % 33.0 dBu
WINDSOR ON
CANTAB CLASS VU
Calculated RCAMSL with HAAT of 190
%Location = 90.00 %Time = 90.00
Area Pop
within Noise Limited Contour 29893.75 517483
not affected by terrain losses 24882.15 508907

WTOV-TV 40-20-33 080-37-14 9(N) 30.000 kw 599 m 10.0 % 33.0 dBu
STEUBENVILLE OH
LIC BLCDT20090507AAC CLASS EX

D/U Baseline: 19.50
%Location = 50.00 %Time = 10.00
Area Pop
Interference 3712.74 8832(1.735)
Study end time: 12:15:57

Facility	Channel	Type	Baseline	Permissible	IX	%Base
CBET, WINDSOR, ON	9	TV	492259	2.0	0	0.000
CBDDTD, WINDSOR, ON	9	DTV	508907	2.0	8832	1.735

Radiofrequency Electromagnetic Field Exposure

The proposed WTOV-DT facilities were evaluated in terms of potential radiofrequency electromagnetic field exposure at ground level to workers and the general public. The radiation center for the proposed WTOV-DT antenna is located 265 meters above ground level. The maximum effective radiated power is 30 kilowatts. A "worst case" downward relative field value of 0.25 is assumed for the antenna's downward radiation. The calculated power density at a point 2 meters above ground level is 0.001 mW/cm^2 . This is less than 5 percent of the Commission's recommended limit of 0.2 mW/cm^2 for channel 9 for an "uncontrolled" environment.

Access to the transmitting site is restricted and appropriately marked with warning signs. As this is a multi-user site an agreement between the stations will control access. In the event that workers or other authorized personnel enter restricted areas or climb the tower, appropriate measures will be taken to assure worker safety with respect to radio frequency radiation exposure. Such measures include reducing the average exposure by spreading out the work over a longer period of time, wearing "accepted" RFR protective clothing and/or RFR exposure monitors or scheduling work when the stations are at reduced power or shut down. The proposed WTOV-DT operation appears to be otherwise categorically excluded from environmental processing.

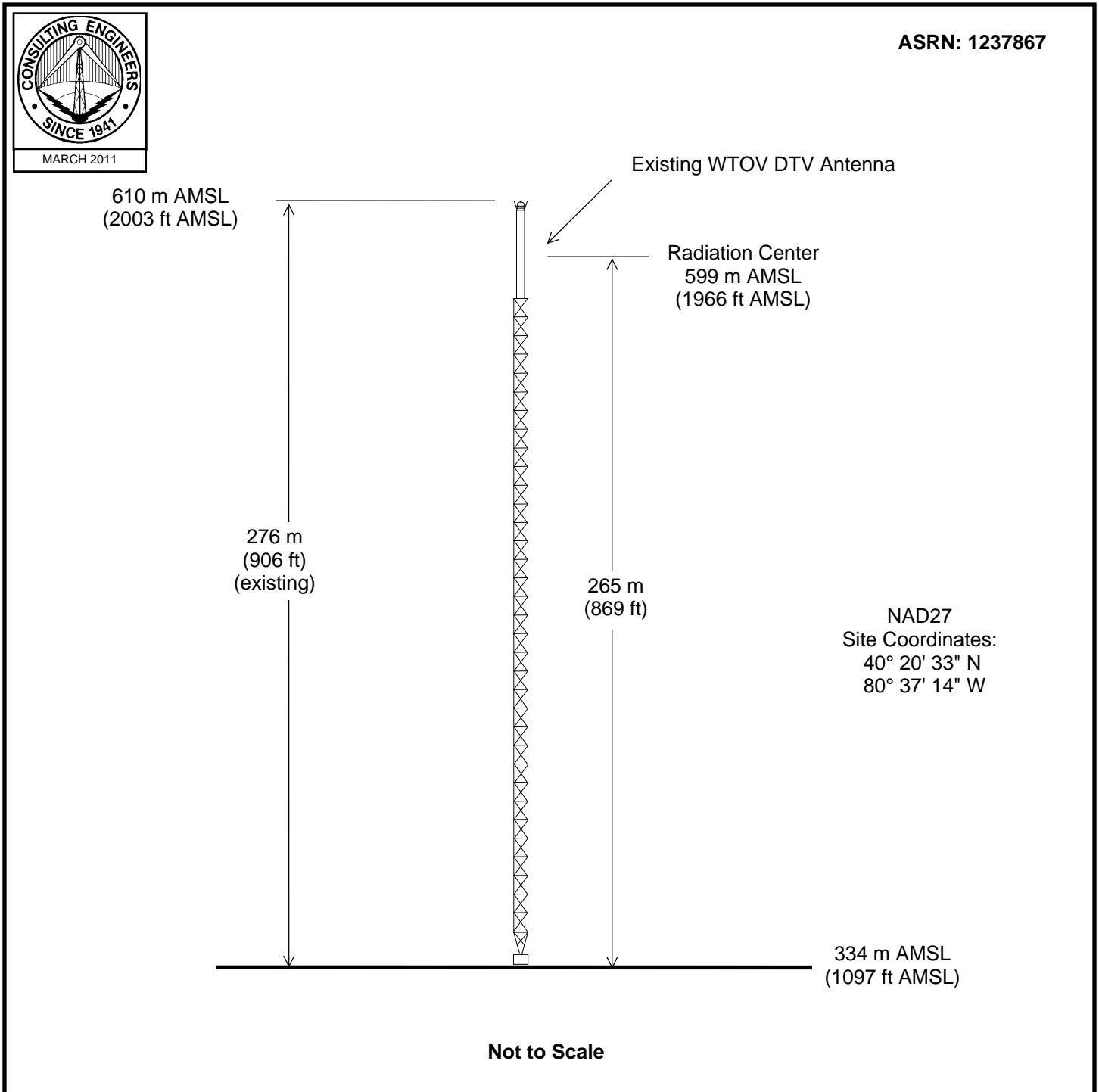
It is noted that this statement only addresses the potential for radiofrequency electromagnetic field exposure. All other aspects of the environmental processing analysis will be or already have been provided to the FCC by the tower owner.

Charles Cooper

du Treil, Lundin & Rackley, Inc.
201 Fletcher Avenue
Sarasota, Florida 32437
941.329.6000

March 4, 2011

Figure 1

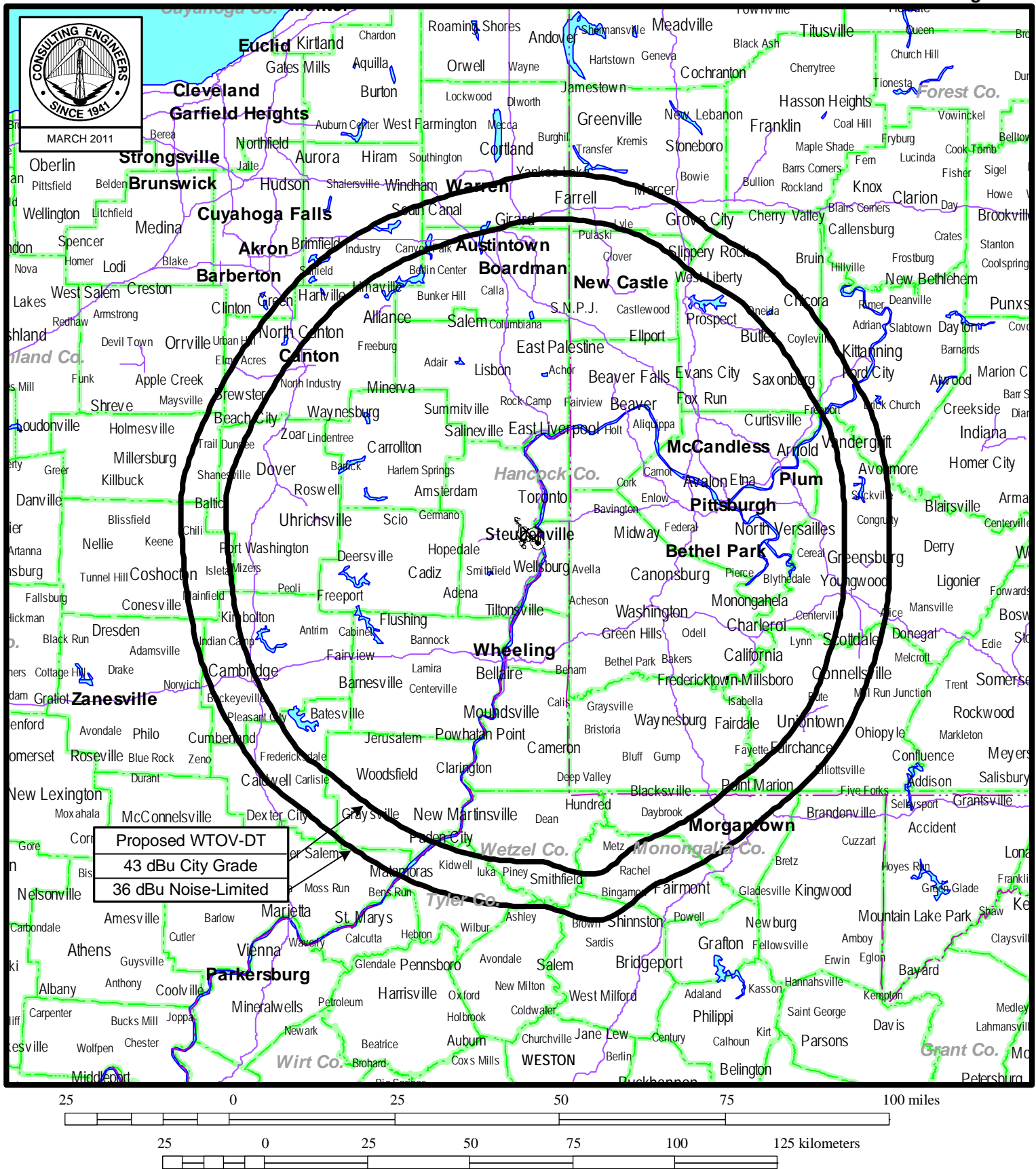


ANTENNA AND SUPPORTING STRUCTURE

DTV STATION WTOV
STEUBENVILLE, OHIO
CH 9 30 KW 282 M

du Treil, Lundin & Rackley, Inc. Sarasota, Florida

Figure 2



PREDICTED COVERAGE CONTOURS

STATION WTOV-DT
STEUBENVILLE, OHIO

CH 9 30 KW 282 M

du Treil, Lundin & Rackley, Inc Sarasota, Florida

Figure 3

Percent allowed new interference: 0.500
Percent allowed new interference to non Class A LPTV: 2.000
TW Census data selected 2000
Data Base Selected
/export/home/cdb/pt_tvdb.sff

WARNING WARNING WARNING

The following list of station records has been excluded from the analysis due to the fact that they have the same state, city and channel as the proposed station - This could cause the program to not find a potential fail situation

You can force the program to include these records by setting the state of the proposed record to ZZ and re-running the analysis

WTOV-TV 09 STEUBENVILLE OH BLCDT 20090507AAC

TV INTERFERENCE and SPACING ANALYSIS PROGRAM

Date: 03-06-2011 Time: 11:19:09

Record Selected for Analysis

WTOV USERRECORD-01 STEUBENVILLE OH US
Channel 09 ERP 30. kW HAAT 282. m RCAMSL 00599 m
Latitude 040-20-33 Longitude 0080-37-14
Status APP Zone 2 Border Site number: 01
Last update Cutoff date Docket
Comments
Applicant

Cell Size for Service Analysis 2.0 km/side

Distance Increments for Longley-Rice Analysis 0.50 km

Facility (site # 01) meets maximum height/power limits

Site number	1			
Azimuth	ERP	HAAT	36.0 dBu F(50,90)	
(Deg)	(kW)	(m)	(km)	
0.0	30.000	335.2	103.7	
45.0	30.000	271.1	99.7	
90.0	30.000	244.4	98.4	
135.0	30.000	277.9	99.9	
180.0	30.000	313.4	101.9	
225.0	30.000	276.8	99.9	
270.0	30.000	272.2	99.7	
315.0	30.000	262.1	99.3	

Evaluation toward Class A Stations from site # 01

No Spacing violations or contour overlap
to Class A stations from site # 01

Class A Evaluation Complete

Figure 3

```

SPACING VIOLATION FOUND BETWEEN STATION

WTOV      09 STEUBENVILLE      OH USERRECORD01      Site # 01

and station

SHORT TO: WTOV-TV 09 STEUBENVILLE      OH DTVPLN      DTVP0206
40 -20-33 80 -37-14
Req. separation 273.6 Actual separation 0.0 Short 273.6 km

Checks to Site Number 01

Proposed facility OK to FCC Monitoring Stations

Proposed facility OK toward West Virginia quiet zone

Proposed facility OK toward Table Mountain

Proposed facility is within the Canadian coordination distance
Distance to border = 205.8km

Proposed facility is beyond the Mexican coordination distance

Proposed station is 0.17km from AM station
STEUBENVILLE      OH WSTV      Status: L Antenna: ND1

*****
Start of Interference Analysis

Channel      Proposed Station
Call      City/State      ARN
09      WTOV      STEUBENVILLE OH      USERRECORD01

Stations Potentially Affected by Proposed Station

Chan  Call      City/State      Dist(km) Status Application Ref. No.
08  WJW      CLEVELAND OH      146.1  LIC      BLCDT      20090612AJC
08  WJW      CLEVELAND OH      146.1  CP MOD  BMPCDT      20080620AHI
08  WGCT-CD  COLUMBUS OH      202.9  LIC      BLDVA      20100429AEC
08  WWCP-TV  JOHNSTOWN PA      125.9  CP MOD  BMPCDT      20080620AIX
09  WUSA      WASHINGTON DC      340.2  LIC      BLCDT      20090617ABW
09  WUSA      WASHINGTON DC      340.2  APP      BPCDT      20100625AZO
10  WOIO      SHAKER HEIGHTS OH  147.1  CP      BPCDT      20080620AKW
10  WOIO      SHAKER HEIGHTS OH  147.1  LIC      BLCDT      19991110AAR
10  WVFX      CLARKSBURG WV      118.2  LIC      BLCDT      20090612AJY

%%%%%%%%%%%%%%%%%%%%%%%%%%%%%%%%%%%%%%%%%%%%%%%%%%%%%%%%%%%%%%%%%%%%%%%%

Analysis of Interference to Affected Station 1

Analysis of current record
Channel      Call      City/State      Application Ref. No.
08      WJW      CLEVELAND OH      BLCDT      -20090612AJC

Stations Potentially Affecting This Station

Chan  Call      City/State      Dist(km) Status Application Ref. No.
07  WJBK      DETROIT MI      173.8  LIC      BLCDT      -20090813ABG
07  WTRF-TV  WHEELING WV      165.9  CP MOD  BMPCDT      -20080620ALK
08  WWTM      KALAMAZOO MI      345.7  CP      BPCDT      -20080312ABA

```

Figure 3

08	WLIO	LIMA OH	213.7	CP MOD	BMPCDT	-20060517ABE
08	WWCP-TV	JOHNSTOWN PA	252.7	CP MOD	BMPCDT	-20080620AIX
08	WVNS-TV	LEWISBURG WV	408.3	CP MOD	BMPCDT	-20040608ABO
09	WTOV-TV	STEUBENVILLE OH	146.1	PLN	DTVPLN	-DTVP0206
09	WTOV	STEUBENVILLE OH	146.1	APP	USERRECORD-01	

Total scenarios = 1

Result key: 1
 Scenario 1 Affected station 1
 Before Analysis

Results for: 8A OH CLEVELAND BLCDDT 20090612AJC LIC

HAAT 342.0 m, ATV ERP 11.0 kW		
	POPULATION	AREA (sq km)
within Noise Limited Contour	4086983	29102.2
not affected by terrain losses	4004932	28414.6
lost to NTSC IX	0	0.0
lost to additional IX by ATV	62094	715.6
lost to ATV IX only	62094	715.6
lost to all IX	62094	715.6

Potential Interfering Stations Included in above Scenario 1

8A MI KALAMAZOO	BPCDDT	20080312ABA	CP
8A OH LIMA	BMPCDDT	20060517ABE	CP
8A PA JOHNSTOWN	BMPCDDT	20080620AIX	CP

After Analysis

Results for: 8A OH CLEVELAND BLCDDT 20090612AJC LIC

HAAT 342.0 m, ATV ERP 11.0 kW		
	POPULATION	AREA (sq km)
within Noise Limited Contour	4086983	29102.2
not affected by terrain losses	4004932	28414.6
lost to NTSC IX	0	0.0
lost to additional IX by ATV	62094	715.6
lost to ATV IX only	62094	715.6
lost to all IX	62094	715.6

Potential Interfering Stations Included in above Scenario 1

8A MI KALAMAZOO	BPCDDT	20080312ABA	CP
8A OH LIMA	BMPCDDT	20060517ABE	CP
8A PA JOHNSTOWN	BMPCDDT	20080620AIX	CP
9A OH STEUBENVILLE	USERRECORD01		APP

Percent new IX = 0.0000%

Worst case new IX 0.0000% Scenario 1

#####

Analysis of Interference to Affected Station 2

Analysis of current record

Channel	Call	City/State	Application	Ref. No.
08	WJW	CLEVELAND OH	BMPCDDT	-20080620AHI

Stations Potentially Affecting This Station

Chan	Call	City/State	Dist(km)	Status	Application	Ref. No.
07	WJBK	DETROIT MI	173.8	LIC	BLCDDT	-20090813ABG
07	WTRF-TV	WHEELING WV	165.9	CP MOD	BMPCDDT	-20080620ALK
08	WWMT	KALAMAZOO MI	345.7	CP	BPCDDT	-20080312ABA
08	WLIO	LIMA OH	213.7	CP MOD	BMPCDDT	-20060517ABE
08	WWCP-TV	JOHNSTOWN PA	252.7	CP MOD	BMPCDDT	-20080620AIX
08	WVNS-TV	LEWISBURG WV	408.3	CP MOD	BMPCDDT	-20040608ABO

Figure 3

09 WTOV-TV STEUBENVILLE OH 146.1 PLN DTVPLN -DTVP0206
 09 WTOV STEUBENVILLE OH 146.1 APP USERRECORD-01
 Proposal causes no interference

#####

Analysis of Interference to Affected Station 3

Analysis of current record

Channel	Call	City/State	Application	Ref. No.
08	WGCT-CD	COLUMBUS OH	BLDVA	-20100429AEC

Stations Potentially Affecting This Station

Chan	Call	City/State	Dist(km)	Status	Application	Ref. No.
08	WBNA	LOUISVILLE KY	327.0	LIC	BLCDT	-20021024AAB
08	WWMT	KALAMAZOO MI	359.6	CP	BPCDT	-20080312ABA
08	WJW	CLEVELAND OH	182.2	LIC	BLCDT	-20090612AJC
08	WJW	CLEVELAND OH	182.2	CP MOD	BMPCDT	-20080620AHI
08	WLIO	LIMA OH	126.2	CP MOD	BMPCDT	-20060517ABE
08	WWCP-TV	JOHNSTOWN PA	325.5	CP MOD	BMPCDT	-20080620AIX
08	WVNS-TV	LEWISBURG WV	318.6	CP MOD	BMPCDT	-20040608ABO
09	WTOV	STEUBENVILLE OH	202.9	APP	USERRECORD-01	

Proposed station is beyond the site to
 nearest cell evaluation distance

#####

Analysis of Interference to Affected Station 4

Analysis of current record

Channel	Call	City/State	Application	Ref. No.
08	WWCP-TV	JOHNSTOWN PA	BMPCDT	-20080620AIX

Stations Potentially Affecting This Station

Chan	Call	City/State	Dist(km)	Status	Application	Ref. No.
07	WJLA-TV	WASHINGTON DC	224.1	CP MOD	BMPCDT	-20100624AHO
07	WJLA-TV	WASHINGTON DC	224.1	LIC	BLCDT	-20090615ABY
07	WTRF-TV	WHEELING WV	136.7	CP MOD	BMPCDT	-20080620ALK
08	WNJB	NEW BRUNSWICK NJ	396.3	APP	BMPEDT	-20100107ACX
08	WNJB	NEW BRUNSWICK NJ	396.3	LIC	BLEDT	-20090820AAL
08	WICZ-TV	BINGHAMTON NY	339.9	LIC	BLCDT	-20060320AFC
08	WJW	CLEVELAND OH	252.7	LIC	BLCDT	-20090612AJC
08	WJW	CLEVELAND OH	252.7	CP MOD	BMPCDT	-20080620AHI
08	WLIO	LIMA OH	425.8	CP MOD	BMPCDT	-20060517ABE
08	WGAL	LANCASTER PA	215.9	APP	BPCDT	-20100111AER
08	WGAL	LANCASTER PA	215.9	LIC	BLCDT	-20090804ABL
08	WVNS-TV	LEWISBURG WV	299.6	CP MOD	BMPCDT	-20040608ABO
09	WUSA	WASHINGTON DC	224.1	LIC	BLCDT	-20090617ABW
09	WUSA	WASHINGTON DC	224.1	APP	BPCDT	-20100625AZO
09	WTOV-TV	STEUBENVILLE OH	125.9	PLN	DTVPLN	-DTVP0206
09	WTOV	STEUBENVILLE OH	125.9	APP	USERRECORD-01	

Total scenarios = 4

Result key: 2

Scenario 1 Affected station 4
 Before Analysis

Results for: 8A PA JOHNSTOWN BMPCDT 20080620AIX CP

HAAT 368.0 m, ATV ERP 9.3 kW

	POPULATION	AREA (sq km)
within Noise Limited Contour	2879495	25889.7
not affected by terrain losses	2665497	23357.8

Figure 3

```

lost to NTSC IX                0          0.0
lost to additional IX by ATV   11511      136.6
lost to ATV IX only           11511      136.6
lost to all IX                 11511      136.6

Potential Interfering Stations Included in above Scenario      1

7A WV WHEELING                BMPCDT      20080620ALK  CP
8A NY BINGHAMTON              BLCDT      20060320AFC  LIC
8A OH CLEVELAND               BLCDT      20090612AJC  LIC
8A PA LANCASTER               BLCDT      20090804ABL  LIC
8A WV LEWISBURG               BMPCDT      20040608ABO  CP
9A OH STEUBENVILLE           DTVPLN      DTVP0206    PLN

After Analysis

Results for:  8A PA JOHNSTOWN          BMPCDT      20080620AIX  CP
HAAT  368.0 m, ATV ERP    9.3 kW

      POPULATION      AREA (sq km)
within Noise Limited Contour  2879495      25889.7
not affected by terrain losses 2665497      23357.8
lost to NTSC IX                0          0.0
lost to additional IX by ATV   19191      172.8
lost to ATV IX only           19191      172.8
lost to all IX                 19191      172.8

Potential Interfering Stations Included in above Scenario      1

7A WV WHEELING                BMPCDT      20080620ALK  CP
8A NY BINGHAMTON              BLCDT      20060320AFC  LIC
8A OH CLEVELAND               BLCDT      20090612AJC  LIC
8A PA LANCASTER               BLCDT      20090804ABL  LIC
8A WV LEWISBURG               BMPCDT      20040608ABO  CP
9A OH STEUBENVILLE           USERRECORD01 APP

Percent new IX =      0.2894%

Result key:      3
Scenario      2  Affected station      4
Before Analysis

Results for:  8A PA JOHNSTOWN          BMPCDT      20080620AIX  CP
HAAT  368.0 m, ATV ERP    9.3 kW

      POPULATION      AREA (sq km)
within Noise Limited Contour  2879495      25889.7
not affected by terrain losses 2665497      23357.8
lost to NTSC IX                0          0.0
lost to additional IX by ATV   10584      120.6
lost to ATV IX only           10584      120.6
lost to all IX                 10584      120.6

Potential Interfering Stations Included in above Scenario      2

7A WV WHEELING                BMPCDT      20080620ALK  CP
8A NY BINGHAMTON              BLCDT      20060320AFC  LIC
8A OH CLEVELAND               BMPCDT      20080620AHI  CP
8A PA LANCASTER               BLCDT      20090804ABL  LIC
8A WV LEWISBURG               BMPCDT      20040608ABO  CP
9A OH STEUBENVILLE           DTVPLN      DTVP0206    PLN

After Analysis

Results for:  8A PA JOHNSTOWN          BMPCDT      20080620AIX  CP
HAAT  368.0 m, ATV ERP    9.3 kW

      POPULATION      AREA (sq km)
within Noise Limited Contour  2879495      25889.7
not affected by terrain losses 2665497      23357.8
lost to NTSC IX                0          0.0
lost to additional IX by ATV   18264      156.7
lost to ATV IX only           18264      156.7
lost to all IX                 18264      156.7

```

Figure 3

Potential Interfering Stations Included in above Scenario 2

7A WV WHEELING	BMPCDT	20080620ALK	CP
8A NY BINGHAMTON	BLCDT	20060320AFC	LIC
8A OH CLEVELAND	BMPCDT	20080620AHI	CP
8A PA LANCASTER	BLCDT	20090804ABL	LIC
8A WV LEWISBURG	BMPCDT	20040608ABO	CP
9A OH STEUBENVILLE	USERRECORD01		APP

Percent new IX = 0.2893%

Result key: 4
Scenario 3 Affected station 4
Before Analysis

Results for: 8A PA JOHNSTOWN BMPCDT 20080620AIX CP
HAAT 368.0 m, ATV ERP 9.3 kW

	POPULATION	AREA (sq km)
within Noise Limited Contour	2879495	25889.7
not affected by terrain losses	2665497	23357.8
lost to NTSC IX	0	0.0
lost to additional IX by ATV	11710	172.8
lost to ATV IX only	11710	172.8
lost to all IX	11710	172.8

Potential Interfering Stations Included in above Scenario 3

7A WV WHEELING	BMPCDT	20080620ALK	CP
8A NY BINGHAMTON	BLCDT	20060320AFC	LIC
8A OH CLEVELAND	BLCDT	20090612AJC	LIC
8A PA LANCASTER	BPCDT	20100111AER	APP
8A WV LEWISBURG	BMPCDT	20040608ABO	CP
9A OH STEUBENVILLE	DTVPLN	DTVP0206	PLN

After Analysis

Results for: 8A PA JOHNSTOWN BMPCDT 20080620AIX CP
HAAT 368.0 m, ATV ERP 9.3 kW

	POPULATION	AREA (sq km)
within Noise Limited Contour	2879495	25889.7
not affected by terrain losses	2665497	23357.8
lost to NTSC IX	0	0.0
lost to additional IX by ATV	19390	209.0
lost to ATV IX only	19390	209.0
lost to all IX	19390	209.0

Potential Interfering Stations Included in above Scenario 3

7A WV WHEELING	BMPCDT	20080620ALK	CP
8A NY BINGHAMTON	BLCDT	20060320AFC	LIC
8A OH CLEVELAND	BLCDT	20090612AJC	LIC
8A PA LANCASTER	BPCDT	20100111AER	APP
8A WV LEWISBURG	BMPCDT	20040608ABO	CP
9A OH STEUBENVILLE	USERRECORD01		APP

Percent new IX = 0.2894%

Result key: 5
Scenario 4 Affected station 4
Before Analysis

Results for: 8A PA JOHNSTOWN BMPCDT 20080620AIX CP
HAAT 368.0 m, ATV ERP 9.3 kW

	POPULATION	AREA (sq km)
within Noise Limited Contour	2879495	25889.7
not affected by terrain losses	2665497	23357.8
lost to NTSC IX	0	0.0
lost to additional IX by ATV	10783	156.7
lost to ATV IX only	10783	156.7
lost to all IX	10783	156.7

Figure 3

Potential Interfering Stations Included in above Scenario 4

7A WV WHEELING	BMPCDT	20080620ALK	CP
8A NY BINGHAMTON	BLCDT	20060320AFC	LIC
8A OH CLEVELAND	BMPCDT	20080620AHI	CP
8A PA LANCASTER	BPCDT	20100111AER	APP
8A WV LEWISBURG	BMPCDT	20040608ABO	CP
9A OH STEUBENVILLE	DTVPLN	DTVP0206	PLN

After Analysis

Results for: 8A PA JOHNSTOWN BMPCDT 20080620AIX CP
 HAAT 368.0 m, ATV ERP 9.3 kW

	POPULATION	AREA (sq km)
within Noise Limited Contour	2879495	25889.7
not affected by terrain losses	2665497	23357.8
lost to NTSC IX	0	0.0
lost to additional IX by ATV	18463	192.9
lost to ATV IX only	18463	192.9
lost to all IX	18463	192.9

Potential Interfering Stations Included in above Scenario 4

7A WV WHEELING	BMPCDT	20080620ALK	CP
8A NY BINGHAMTON	BLCDT	20060320AFC	LIC
8A OH CLEVELAND	BMPCDT	20080620AHI	CP
8A PA LANCASTER	BPCDT	20100111AER	APP
8A WV LEWISBURG	BMPCDT	20040608ABO	CP
9A OH STEUBENVILLE	USERRECORD01		APP

Percent new IX = 0.2893%

Worst case new IX 0.2894% Scenario 3

#####

Analysis of Interference to Affected Station 5

Analysis of current record

Channel	Call	City/State	Application	Ref. No.
09	WUSA	WASHINGTON DC	BLCDT	-20090617ABW

Stations Potentially Affecting This Station

Chan	Call	City/State	Dist(km)	Status	Application	Ref. No.
08	WWCP-TV	JOHNSTOWN PA	224.1	CP MOD	BMPCDT	-20080620AIX
08	WGAL	LANCASTER PA	126.8	APP	BPCDT	-20100111AER
08	WGAL	LANCASTER PA	126.8	LIC	BLCDT	-20090804ABL
09	WSKY-TV	MANTEO NC	278.5	LIC	BLCDT	-20100514ADM
09	WTOV-TV	STEUBENVILLE OH	340.2	PLN	DTVPLN	-DTVP0206
09	WBPH-TV	BETHLEHEM PA	227.6	LIC	BLCDT	-20060609AAH
09	WBPH-TV	BETHLEHEM PA	228.2	CP MOD	BMPCDT	-20100105AAH
10	WHTM-TV	HARRISBURG PA	152.2	CP	BPCDT	-20080620AGL
10	WHTM-TV	HARRISBURG PA	152.2	LIC	BLCDT	-20040812AAH
09	WTOV	STEUBENVILLE OH	340.2	APP	USERRECORD-01	

Total scenarios = 4

Result key: 6

Scenario 1 Affected station 5

Before Analysis

Results for: 9A DC WASHINGTON BLCDT 20090617ABW LIC

HAAT 235.0 m, ATV ERP 12.6 kW

	POPULATION	AREA (sq km)
within Noise Limited Contour	7353356	25990.7
not affected by terrain losses	7239437	24102.5

Figure 3

lost to NTSC IX	0	0.0
lost to additional IX by ATV	51451	764.1
lost to ATV IX only	51451	764.1
lost to all IX	51451	764.1

Potential Interfering Stations Included in above Scenario 1

8A PA LANCASTER	BLCDT	20090804ABL	LIC
9A NC MANTEO	BLCDT	20100514ADM	LIC
9A PA BETHLEHEM	BLCDT	20060609AAH	LIC
10A PA HARRISBURG	BPCDT	20080620AGL	CP

After Analysis

Results for: 9A DC WASHINGTON BLCDT 20090617ABW LIC

HAAT 235.0 m, ATV ERP 12.6 kW

	POPULATION	AREA (sq km)
within Noise Limited Contour	7353356	25990.7
not affected by terrain losses	7239437	24102.5
lost to NTSC IX	0	0.0
lost to additional IX by ATV	51465	768.1
lost to ATV IX only	51465	768.1
lost to all IX	51465	768.1

Potential Interfering Stations Included in above Scenario 1

8A PA LANCASTER	BLCDT	20090804ABL	LIC
9A NC MANTEO	BLCDT	20100514ADM	LIC
9A PA BETHLEHEM	BLCDT	20060609AAH	LIC
10A PA HARRISBURG	BPCDT	20080620AGL	CP
9A OH STEUBENVILLE	USERRECORD01		APP

Percent new IX = 0.0002%

Result key: 7

Scenario 2 Affected station 5

Before Analysis

Results for: 9A DC WASHINGTON BLCDT 20090617ABW LIC

HAAT 235.0 m, ATV ERP 12.6 kW

	POPULATION	AREA (sq km)
within Noise Limited Contour	7353356	25990.7
not affected by terrain losses	7239437	24102.5
lost to NTSC IX	0	0.0
lost to additional IX by ATV	97838	1216.1
lost to ATV IX only	97838	1216.1
lost to all IX	97838	1216.1

Potential Interfering Stations Included in above Scenario 2

8A PA LANCASTER	BLCDT	20090804ABL	LIC
9A NC MANTEO	BLCDT	20100514ADM	LIC
9A PA BETHLEHEM	BMPCDT	20100105AAH	CP
10A PA HARRISBURG	BPCDT	20080620AGL	CP

After Analysis

Results for: 9A DC WASHINGTON BLCDT 20090617ABW LIC

HAAT 235.0 m, ATV ERP 12.6 kW

	POPULATION	AREA (sq km)
within Noise Limited Contour	7353356	25990.7
not affected by terrain losses	7239437	24102.5
lost to NTSC IX	0	0.0
lost to additional IX by ATV	97838	1216.1
lost to ATV IX only	97838	1216.1
lost to all IX	97838	1216.1

Potential Interfering Stations Included in above Scenario 2

8A PA LANCASTER	BLCDT	20090804ABL	LIC
9A NC MANTEO	BLCDT	20100514ADM	LIC

Figure 3

9A PA BETHLEHEM	BMPCDT	20100105AAH	CP
10A PA HARRISBURG	BPCDT	20080620AGL	CP
9A OH STEUBENVILLE	USERRECORD01		APP

Percent new IX = 0.0000%

Result key: 8
 Scenario 3 Affected station 5
 Before Analysis

Results for: 9A DC WASHINGTON BLCDT 20090617ABW LIC
 HAAT 235.0 m, ATV ERP 12.6 kW

	POPULATION	AREA (sq km)
within Noise Limited Contour	7353356	25990.7
not affected by terrain losses	7239437	24102.5
lost to NTSC IX	0	0.0
lost to additional IX by ATV	52660	780.1
lost to ATV IX only	52660	780.1
lost to all IX	52660	780.1

Potential Interfering Stations Included in above Scenario 3

8A PA LANCASTER	BPCDT	20100111AER	APP
9A NC MANTEO	BLCDT	20100514ADM	LIC
9A PA BETHLEHEM	BLCDT	20060609AAH	LIC
10A PA HARRISBURG	BPCDT	20080620AGL	CP

After Analysis

Results for: 9A DC WASHINGTON BLCDT 20090617ABW LIC
 HAAT 235.0 m, ATV ERP 12.6 kW

	POPULATION	AREA (sq km)
within Noise Limited Contour	7353356	25990.7
not affected by terrain losses	7239437	24102.5
lost to NTSC IX	0	0.0
lost to additional IX by ATV	52674	784.1
lost to ATV IX only	52674	784.1
lost to all IX	52674	784.1

Potential Interfering Stations Included in above Scenario 3

8A PA LANCASTER	BPCDT	20100111AER	APP
9A NC MANTEO	BLCDT	20100514ADM	LIC
9A PA BETHLEHEM	BLCDT	20060609AAH	LIC
10A PA HARRISBURG	BPCDT	20080620AGL	CP
9A OH STEUBENVILLE	USERRECORD01		APP

Percent new IX = 0.0002%

Result key: 9
 Scenario 4 Affected station 5
 Before Analysis

Results for: 9A DC WASHINGTON BLCDT 20090617ABW LIC
 HAAT 235.0 m, ATV ERP 12.6 kW

	POPULATION	AREA (sq km)
within Noise Limited Contour	7353356	25990.7
not affected by terrain losses	7239437	24102.5
lost to NTSC IX	0	0.0
lost to additional IX by ATV	98436	1224.1
lost to ATV IX only	98436	1224.1
lost to all IX	98436	1224.1

Potential Interfering Stations Included in above Scenario 4

8A PA LANCASTER	BPCDT	20100111AER	APP
9A NC MANTEO	BLCDT	20100514ADM	LIC
9A PA BETHLEHEM	BMPCDT	20100105AAH	CP
10A PA HARRISBURG	BPCDT	20080620AGL	CP

After Analysis

Figure 3

Results for: 9A DC WASHINGTON BLCDT 20090617ABW LIC

HAAT 235.0 m, ATV ERP 12.6 kW	POPULATION	AREA (sq km)
within Noise Limited Contour	7353356	25990.7
not affected by terrain losses	7239437	24102.5
lost to NTSC IX	0	0.0
lost to additional IX by ATV	98436	1224.1
lost to ATV IX only	98436	1224.1
lost to all IX	98436	1224.1

Potential Interfering Stations Included in above Scenario 4

8A PA LANCASTER	BPCDT	20100111AER	APP
9A NC MANTEO	BLCDT	20100514ADM	LIC
9A PA BETHLEHEM	BMPCDT	20100105AAH	CP
10A PA HARRISBURG	BPCDT	20080620AGL	CP
9A OH STEUBENVILLE	USERRECORD01		APP

Percent new IX = 0.0000%

Worst case new IX 0.0002% Scenario 3

#####

Analysis of Interference to Affected Station 6

Analysis of current record

Channel	Call	City/State	Application	Ref. No.
09	WUSA	WASHINGTON DC	BPCDT	-20100625AZO

Stations Potentially Affecting This Station

Chan	Call	City/State	Dist(km)	Status	Application	Ref. No.
08	WWCP-TV	JOHNSTOWN PA	224.1	CP MOD	BMPCDT	-20080620AIX
08	WGAL	LANCASTER PA	126.8	APP	BPCDT	-20100111AER
08	WGAL	LANCASTER PA	126.8	LIC	BLCDT	-20090804ABL
09	WSKY-TV	MANTEO NC	278.5	LIC	BLCDT	-20100514ADM
09	WTOV-TV	STEUBENVILLE OH	340.2	PLN	DTVPLN	-DTVP0206
09	WBPH-TV	BETHLEHEM PA	227.6	LIC	BLCDT	-20060609AAH
09	WBPH-TV	BETHLEHEM PA	228.2	CP MOD	BMPCDT	-20100105AAH
10	WHTM-TV	HARRISBURG PA	152.2	CP	BPCDT	-20080620AGL
10	WHTM-TV	HARRISBURG PA	152.2	LIC	BLCDT	-20040812AAH
09	WTOV	STEUBENVILLE OH	340.2	APP	USERRECORD-01	

Total scenarios = 4

Result key: 10

Scenario 1 Affected station 6

Before Analysis

Results for: 9A DC WASHINGTON BPCDT 20100625AZO APP

HAAT 236.0 m, ATV ERP 52.0 kW	POPULATION	AREA (sq km)
within Noise Limited Contour	7914337	32752.2
not affected by terrain losses	7577325	30031.8
lost to NTSC IX	0	0.0
lost to additional IX by ATV	41504	1164.1
lost to ATV IX only	41504	1164.1
lost to all IX	41504	1164.1

Potential Interfering Stations Included in above Scenario 1

8A PA LANCASTER	BLCDT	20090804ABL	LIC
9A NC MANTEO	BLCDT	20100514ADM	LIC
9A PA BETHLEHEM	BLCDT	20060609AAH	LIC
10A PA HARRISBURG	BPCDT	20080620AGL	CP
9A OH STEUBENVILLE	DTVPLN	DTVP0206	PLN

Figure 3

After Analysis

Results for: 9A DC WASHINGTON BPCDT 20100625AZO APP
 HAAT 236.0 m, ATV ERP 52.0 kW

	POPULATION	AREA (sq km)
within Noise Limited Contour	7914337	32752.2
not affected by terrain losses	7577325	30031.8
lost to NTSC IX	0	0.0
lost to additional IX by ATV	42587	1196.2
lost to ATV IX only	42587	1196.2
lost to all IX	42587	1196.2

Potential Interfering Stations Included in above Scenario 1

8A PA LANCASTER	BLCDDT	20090804ABL	LIC
9A NC MANTEO	BLCDDT	20100514ADM	LIC
9A PA BETHLEHEM	BLCDDT	20060609AAH	LIC
10A PA HARRISBURG	BPCDDT	20080620AGL	CP
9A OH STEUBENVILLE	USERRECORD01		APP

Percent new IX = 0.0144%

Result key: 11
 Scenario 2 Affected station 6
 Before Analysis

Results for: 9A DC WASHINGTON BPCDT 20100625AZO APP
 HAAT 236.0 m, ATV ERP 52.0 kW

	POPULATION	AREA (sq km)
within Noise Limited Contour	7914337	32752.2
not affected by terrain losses	7577325	30031.8
lost to NTSC IX	0	0.0
lost to additional IX by ATV	105103	1900.2
lost to ATV IX only	105103	1900.2
lost to all IX	105103	1900.2

Potential Interfering Stations Included in above Scenario 2

8A PA LANCASTER	BLCDDT	20090804ABL	LIC
9A NC MANTEO	BLCDDT	20100514ADM	LIC
9A PA BETHLEHEM	BMPCDDT	20100105AAH	CP
10A PA HARRISBURG	BPCDDT	20080620AGL	CP
9A OH STEUBENVILLE	DTVPLN	DTVP0206	PLN

After Analysis

Results for: 9A DC WASHINGTON BPCDT 20100625AZO APP
 HAAT 236.0 m, ATV ERP 52.0 kW

	POPULATION	AREA (sq km)
within Noise Limited Contour	7914337	32752.2
not affected by terrain losses	7577325	30031.8
lost to NTSC IX	0	0.0
lost to additional IX by ATV	105202	1904.2
lost to ATV IX only	105202	1904.2
lost to all IX	105202	1904.2

Potential Interfering Stations Included in above Scenario 2

8A PA LANCASTER	BLCDDT	20090804ABL	LIC
9A NC MANTEO	BLCDDT	20100514ADM	LIC
9A PA BETHLEHEM	BMPCDDT	20100105AAH	CP
10A PA HARRISBURG	BPCDDT	20080620AGL	CP
9A OH STEUBENVILLE	USERRECORD01		APP

Percent new IX = 0.0013%

Result key: 12
 Scenario 3 Affected station 6
 Before Analysis

Figure 3

Results for: 9A DC WASHINGTON BPCDT 20100625AZO APP
 HAAT 236.0 m, ATV ERP 52.0 kW

	POPULATION	AREA (sq km)
within Noise Limited Contour	7914337	32752.2
not affected by terrain losses	7577325	30031.8
lost to NTSC IX	0	0.0
lost to additional IX by ATV	47413	1220.2
lost to ATV IX only	47413	1220.2
lost to all IX	47413	1220.2

Potential Interfering Stations Included in above Scenario 3

8A PA LANCASTER	BPCDT	20100111AER	APP
9A NC MANTEO	BLCDT	20100514ADM	LIC
9A PA BETHLEHEM	BLCDT	20060609AAH	LIC
10A PA HARRISBURG	BPCDT	20080620AGL	CP
9A OH STEUBENVILLE	DTVPLN	DTVP0206	PLN

After Analysis

Results for: 9A DC WASHINGTON BPCDT 20100625AZO APP
 HAAT 236.0 m, ATV ERP 52.0 kW

	POPULATION	AREA (sq km)
within Noise Limited Contour	7914337	32752.2
not affected by terrain losses	7577325	30031.8
lost to NTSC IX	0	0.0
lost to additional IX by ATV	48496	1252.2
lost to ATV IX only	48496	1252.2
lost to all IX	48496	1252.2

Potential Interfering Stations Included in above Scenario 3

8A PA LANCASTER	BPCDT	20100111AER	APP
9A NC MANTEO	BLCDT	20100514ADM	LIC
9A PA BETHLEHEM	BLCDT	20060609AAH	LIC
10A PA HARRISBURG	BPCDT	20080620AGL	CP
9A OH STEUBENVILLE	USERRECORD01		APP

Percent new IX = 0.0144%

Result key: 13
 Scenario 4 Affected station 6
 Before Analysis

Results for: 9A DC WASHINGTON BPCDT 20100625AZO APP
 HAAT 236.0 m, ATV ERP 52.0 kW

	POPULATION	AREA (sq km)
within Noise Limited Contour	7914337	32752.2
not affected by terrain losses	7577325	30031.8
lost to NTSC IX	0	0.0
lost to additional IX by ATV	108775	1928.2
lost to ATV IX only	108775	1928.2
lost to all IX	108775	1928.2

Potential Interfering Stations Included in above Scenario 4

8A PA LANCASTER	BPCDT	20100111AER	APP
9A NC MANTEO	BLCDT	20100514ADM	LIC
9A PA BETHLEHEM	BMPCDT	20100105AAH	CP
10A PA HARRISBURG	BPCDT	20080620AGL	CP
9A OH STEUBENVILLE	DTVPLN	DTVP0206	PLN

After Analysis

Results for: 9A DC WASHINGTON BPCDT 20100625AZO APP
 HAAT 236.0 m, ATV ERP 52.0 kW

	POPULATION	AREA (sq km)
within Noise Limited Contour	7914337	32752.2
not affected by terrain losses	7577325	30031.8
lost to NTSC IX	0	0.0
lost to additional IX by ATV	108874	1932.2

Figure 3

```

lost to ATV IX only          108874      1932.2
lost to all IX               108874      1932.2

Potential Interfering Stations Included in above Scenario      4

8A PA LANCASTER             BPCDT      20100111AER  APP
9A NC MANTEO                 BLCDT      20100514ADM  LIC
9A PA BETHLEHEM             BMPCDT     20100105AAH  CP
10A PA HARRISBURG           BPCDT      20080620AGL  CP
9A OH STEUBENVILLE          USERRECORD01  APP

Percent new IX =          0.0013%

Worst case new IX          0.0144% Scenario      3

#####

Analysis of Interference to Affected Station      7

Analysis of current record
Channel      Call      City/State      Application Ref. No.
10           WOIO      SHAKER HEIGHTS OH      BPCDT      -20080620AKW

Stations Potentially Affecting This Station

Chan   Call      City/State      Dist(km) Status Application Ref. No.
09     WTOV-TV   STEUBENVILLE OH      147.1  PLN      DTVPLN      -DTV0206
10     WILX-TV   ONONDAGA MI          265.3  CP MOD    BMPCDT      -20080618AAZ
10     WHEC-TV   ROCHESTER NY          390.0  APP      BMPCDT      -20080620ABS
10     WHEC-TV   ROCHESTER NY          390.0  CP       BPCDT      -20080425AAZ
10     WHTM-TV   HARRISBURG PA          416.3  CP       BPCDT      -20080620AGL
10     WHTM-TV   HARRISBURG PA          416.3  LIC      BLCDT      -20040812AAH
10     WVFX      CLARKSBURG WV          258.7  LIC      BLCDT      -20090612AJY
10     WSWP-TV   GRANDVIEW WV          392.7  CP MOD    BNPEDT      -20080916AEU
10     WSWP-TV   GRANDVIEW WV          392.7  APP      BDSTA      -20080225AGT
11     WTOL      TOLEDO OH             143.7  CP MOD    BMPCDT      -20081124AKP
11     WPCW      JEANNETTE PA          172.2  LIC      BLCDT      -20090626AAT
11     WPCW      JEANNETTE PA          172.2  CP MOD    BMPCDT      -20080616ABM
09     WTOV      STEUBENVILLE OH      147.1  APP      USERRECORD-01

Total scenarios =          1

Result key:          14
Scenario            1 Affected station      7
Before Analysis

Results for: 10A OH SHAKER HEIGHTS      BPCDT      20080620AKW  CP
HAAT 361.0 m, ATV ERP 10.3 kW

      POPULATION      AREA (sq km)
within Noise Limited Contour      4074788      25288.0
not affected by terrain losses      3986193      24487.7
lost to NTSC IX                      0          0.0
lost to additional IX by ATV          61293      408.2
lost to ATV IX only                  61293      408.2
lost to all IX                      61293      408.2

Potential Interfering Stations Included in above Scenario      1

10A MI ONONDAGA             BMPCDT     20080618AAZ  CP
10A WV CLARKSBURG           BLCDT      20090612AJY  LIC
11A OH TOLEDO               BMPCDT     20081124AKP  CP

After Analysis

Results for: 10A OH SHAKER HEIGHTS      BPCDT      20080620AKW  CP
HAAT 361.0 m, ATV ERP 10.3 kW

      POPULATION      AREA (sq km)
within Noise Limited Contour      4074788      25288.0

```

Figure 3

```

not affected by terrain losses    3986193    24487.7
lost to NTSC IX                  0          0.0
lost to additional IX by ATV      61293    408.2
lost to ATV IX only              61293    408.2
lost to all IX                   61293    408.2

Potential Interfering Stations Included in above Scenario    1

10A MI ONONDAGA          BMPCDT    20080618AAZ    CP
10A WV CLARKSBURG        BLCDT    20090612AJY    LIC
11A OH TOLEDO            BMPCDT    20081124AKP    CP
9A OH STEUBENVILLE      USERRECORD01    APP

Percent new IX =      0.0000%

Worst case new IX      0.0000% Scenario    1

#####

Analysis of Interference to Affected Station    8

Analysis of current record
Channel      Call      City/State      Application Ref. No.
10      WOIO      SHAKER HEIGHTS OH      BLCDT      -19991110AAR

Stations Potentially Affecting This Station

Chan      Call      City/State      Dist(km) Status      Application Ref. No.
09      WTOV-TV      STEUBENVILLE OH      147.1    PLN      DTVPLN      -DTVP0206
10      WILX-TV      ONONDAGA MI      265.3    CP MOD    BMPCDT      -20080618AAZ
10      WHEC-TV      ROCHESTER NY      390.0    APP      BMPCDT      -20080620ABS
10      WHEC-TV      ROCHESTER NY      390.0    CP      BPCDT      -20080425AAZ
10      WHTM-TV      HARRISBURG PA      416.3    CP      BPCDT      -20080620AGL
10      WHTM-TV      HARRISBURG PA      416.3    LIC      BLCDT      -20040812AAH
10      WVFX      CLARKSBURG WV      258.7    LIC      BLCDT      -20090612AJY
10      WSWP-TV      GRANDVIEW WV      392.7    CP MOD    BMPEDT      -20080916AEU
10      WSWP-TV      GRANDVIEW WV      392.7    APP      BDSTA      -20080225AGT
11      WTOL      TOLEDO OH      143.7    CP MOD    BMPCDT      -20081124AKP
11      WPCW      JEANNETTE PA      172.2    LIC      BLCDT      -20090626AAT
11      WPCW      JEANNETTE PA      172.2    CP MOD    BMPCDT      -20080616ABM
09      WTOV      STEUBENVILLE OH      147.1    APP      USERRECORD-01
Proposal causes no interference

#####

Analysis of Interference to Affected Station    9

Analysis of current record
Channel      Call      City/State      Application Ref. No.
10      WVFX      CLARKSBURG WV      BLCDT      -20090612AJY

Stations Potentially Affecting This Station

Chan      Call      City/State      Dist(km) Status      Application Ref. No.
09      WTOV-TV      STEUBENVILLE OH      118.2    PLN      DTVPLN      -DTVP0206
10      WOIO      SHAKER HEIGHTS OH      258.7    CP      BPCDT      -20080620AKW
10      WOIO      SHAKER HEIGHTS OH      258.7    LIC      BLCDT      -19991110AAR
10      WHTM-TV      HARRISBURG PA      310.9    CP      BPCDT      -20080620AGL
10      WHTM-TV      HARRISBURG PA      310.9    LIC      BLCDT      -20040812AAH
10      WSWP-TV      GRANDVIEW WV      165.9    CP MOD    BMPEDT      -20080916AEU
10      WSWP-TV      GRANDVIEW WV      165.9    APP      BDSTA      -20080225AGT
11      WPCW      JEANNETTE PA      135.5    LIC      BLCDT      -20090626AAT
11      WPCW      JEANNETTE PA      135.5    CP MOD    BMPCDT      -20080616ABM
11      WVPT      STAUNTON VA      154.6    CP      BPEDT      -20081022ABK
11      WVPT      STAUNTON VA      154.6    LIC      BLEDT      -20021220ADX
09      WTOV      STEUBENVILLE OH      118.2    APP      USERRECORD-01

```

Figure 3

Total scenarios = 16

Result key: 15
Scenario 1 Affected station 9
Before Analysis

Results for: 10A WV CLARKSBURG BLCDT 20090612AJY LIC
HAAT 235.0 m, ATV ERP 30.0 kW

	POPULATION	AREA (sq km)
within Noise Limited Contour	731402	25497.8
not affected by terrain losses	610761	23472.3
lost to NTSC IX	0	0.0
lost to additional IX by ATV	26763	885.9
lost to ATV IX only	26763	885.9
lost to all IX	26763	885.9

Potential Interfering Stations Included in above Scenario 1

10A OH SHAKER HEIGHTS	BPCDT	20080620AKW	CP
10A PA HARRISBURG	BPCDT	20080620AGL	CP
10A WV GRANDVIEW	BMPEDT	20080916AEU	CP
11A PA JEANNETTE	BLCDT	20090626AAT	LIC
9A OH STEUBENVILLE	DTVPLN	DTVP0206	PLN

After Analysis

Results for: 10A WV CLARKSBURG BLCDT 20090612AJY LIC
HAAT 235.0 m, ATV ERP 30.0 kW

	POPULATION	AREA (sq km)
within Noise Limited Contour	731402	25497.8
not affected by terrain losses	610761	23472.3
lost to NTSC IX	0	0.0
lost to additional IX by ATV	29069	922.1
lost to ATV IX only	29069	922.1
lost to all IX	29069	922.1

Potential Interfering Stations Included in above Scenario 1

10A OH SHAKER HEIGHTS	BPCDT	20080620AKW	CP
10A PA HARRISBURG	BPCDT	20080620AGL	CP
10A WV GRANDVIEW	BMPEDT	20080916AEU	CP
11A PA JEANNETTE	BLCDT	20090626AAT	LIC
9A OH STEUBENVILLE	USERRECORD01		APP

Percent new IX = 0.3949%

Result key: 16
Scenario 2 Affected station 9
Before Analysis

Results for: 10A WV CLARKSBURG BLCDT 20090612AJY LIC
HAAT 235.0 m, ATV ERP 30.0 kW

	POPULATION	AREA (sq km)
within Noise Limited Contour	731402	25497.8
not affected by terrain losses	610761	23472.3
lost to NTSC IX	0	0.0
lost to additional IX by ATV	28399	889.9
lost to ATV IX only	28399	889.9
lost to all IX	28399	889.9

Potential Interfering Stations Included in above Scenario 2

10A OH SHAKER HEIGHTS	BPCDT	20080620AKW	CP
10A PA HARRISBURG	BPCDT	20080620AGL	CP
10A WV GRANDVIEW	BMPEDT	20080916AEU	CP
11A PA JEANNETTE	BMPEDT	20080616ABM	CP
9A OH STEUBENVILLE	DTVPLN	DTVP0206	PLN

After Analysis

Figure 3

Results for: 10A WV CLARKSBURG BLCDT 20090612AJY LIC
 HAAT 235.0 m, ATV ERP 30.0 kW

	POPULATION	AREA (sq km)
within Noise Limited Contour	731402	25497.8
not affected by terrain losses	610761	23472.3
lost to NTSC IX	0	0.0
lost to additional IX by ATV	30705	926.2
lost to ATV IX only	30705	926.2
lost to all IX	30705	926.2

Potential Interfering Stations Included in above Scenario 2

10A OH SHAKER HEIGHTS	BPCDT	20080620AKW	CP
10A PA HARRISBURG	BPCDT	20080620AGL	CP
10A WV GRANDVIEW	BMPEDT	20080916AEU	CP
11A PA JEANNETTE	BMPEDT	20080616ABM	CP
9A OH STEUBENVILLE	USERRECORD01		APP

Percent new IX = 0.3960%

Result key: 17
 Scenario 3 Affected station 9
 Before Analysis

Results for: 10A WV CLARKSBURG BLCDT 20090612AJY LIC
 HAAT 235.0 m, ATV ERP 30.0 kW

	POPULATION	AREA (sq km)
within Noise Limited Contour	731402	25497.8
not affected by terrain losses	610761	23472.3
lost to NTSC IX	0	0.0
lost to additional IX by ATV	26763	885.9
lost to ATV IX only	26763	885.9
lost to all IX	26763	885.9

Potential Interfering Stations Included in above Scenario 3

10A OH SHAKER HEIGHTS	BPCDT	20080620AKW	CP
10A PA HARRISBURG	BLCDT	20040812AAH	LIC
10A WV GRANDVIEW	BMPEDT	20080916AEU	CP
11A PA JEANNETTE	BLCDT	20090626AAT	LIC
9A OH STEUBENVILLE	DTVPLN	DTVP0206	PLN

After Analysis

Results for: 10A WV CLARKSBURG BLCDT 20090612AJY LIC
 HAAT 235.0 m, ATV ERP 30.0 kW

	POPULATION	AREA (sq km)
within Noise Limited Contour	731402	25497.8
not affected by terrain losses	610761	23472.3
lost to NTSC IX	0	0.0
lost to additional IX by ATV	29069	922.1
lost to ATV IX only	29069	922.1
lost to all IX	29069	922.1

Potential Interfering Stations Included in above Scenario 3

10A OH SHAKER HEIGHTS	BPCDT	20080620AKW	CP
10A PA HARRISBURG	BLCDT	20040812AAH	LIC
10A WV GRANDVIEW	BMPEDT	20080916AEU	CP
11A PA JEANNETTE	BLCDT	20090626AAT	LIC
9A OH STEUBENVILLE	USERRECORD01		APP

Percent new IX = 0.3949%

Result key: 18
 Scenario 4 Affected station 9
 Before Analysis

Results for: 10A WV CLARKSBURG BLCDT 20090612AJY LIC
 HAAT 235.0 m, ATV ERP 30.0 kW

POPULATION	AREA (sq km)
------------	--------------

Figure 3

within Noise Limited Contour	731402	25497.8
not affected by terrain losses	610761	23472.3
lost to NTSC IX	0	0.0
lost to additional IX by ATV	28399	889.9
lost to ATV IX only	28399	889.9
lost to all IX	28399	889.9

Potential Interfering Stations Included in above Scenario 4

10A OH SHAKER HEIGHTS	BPCDT	20080620AKW	CP
10A PA HARRISBURG	BLCDT	20040812AAH	LIC
10A WV GRANDVIEW	BMPEDT	20080916AEU	CP
11A PA JEANNETTE	BMPCDT	20080616ABM	CP
9A OH STEUBENVILLE	DTVPLN	DTVP0206	PLN

After Analysis

Results for: 10A WV CLARKSBURG BLCDT 20090612AJY LIC

HAAT 235.0 m, ATV ERP 30.0 kW

	POPULATION	AREA (sq km)
within Noise Limited Contour	731402	25497.8
not affected by terrain losses	610761	23472.3
lost to NTSC IX	0	0.0
lost to additional IX by ATV	30705	926.2
lost to ATV IX only	30705	926.2
lost to all IX	30705	926.2

Potential Interfering Stations Included in above Scenario 4

10A OH SHAKER HEIGHTS	BPCDT	20080620AKW	CP
10A PA HARRISBURG	BLCDT	20040812AAH	LIC
10A WV GRANDVIEW	BMPEDT	20080916AEU	CP
11A PA JEANNETTE	BMPCDT	20080616ABM	CP
9A OH STEUBENVILLE	USERRECORD01		APP

Percent new IX = 0.3960%

Result key: 19

Scenario 5 Affected station 9

Before Analysis

Results for: 10A WV CLARKSBURG BLCDT 20090612AJY LIC

HAAT 235.0 m, ATV ERP 30.0 kW

	POPULATION	AREA (sq km)
within Noise Limited Contour	731402	25497.8
not affected by terrain losses	610761	23472.3
lost to NTSC IX	0	0.0
lost to additional IX by ATV	23494	861.7
lost to ATV IX only	23494	861.7
lost to all IX	23494	861.7

Potential Interfering Stations Included in above Scenario 5

10A OH SHAKER HEIGHTS	BLCDT	19991110AAR	LIC
10A PA HARRISBURG	BPCDT	20080620AGL	CP
10A WV GRANDVIEW	BMPEDT	20080916AEU	CP
11A PA JEANNETTE	BLCDT	20090626AAT	LIC
9A OH STEUBENVILLE	DTVPLN	DTVP0206	PLN

After Analysis

Results for: 10A WV CLARKSBURG BLCDT 20090612AJY LIC

HAAT 235.0 m, ATV ERP 30.0 kW

	POPULATION	AREA (sq km)
within Noise Limited Contour	731402	25497.8
not affected by terrain losses	610761	23472.3
lost to NTSC IX	0	0.0
lost to additional IX by ATV	25871	902.0
lost to ATV IX only	25871	902.0
lost to all IX	25871	902.0

Figure 3

Potential Interfering Stations Included in above Scenario 5

10A OH SHAKER HEIGHTS	BLCDT	19991110AAR	LIC
10A PA HARRISBURG	BPCDT	20080620AGL	CP
10A WV GRANDVIEW	BMPEDT	20080916AEU	CP
11A PA JEANNETTE	BLCDT	20090626AAT	LIC
9A OH STEUBENVILLE	USERRECORD01		APP

Percent new IX = 0.4048%

Result key: 20
Scenario 6 Affected station 9
Before Analysis

Results for: 10A WV CLARKSBURG BLCDT 20090612AJY LIC
HAAT 235.0 m, ATV ERP 30.0 kW

	POPULATION	AREA (sq km)
within Noise Limited Contour	731402	25497.8
not affected by terrain losses	610761	23472.3
lost to NTSC IX	0	0.0
lost to additional IX by ATV	25130	865.8
lost to ATV IX only	25130	865.8
lost to all IX	25130	865.8

Potential Interfering Stations Included in above Scenario 6

10A OH SHAKER HEIGHTS	BLCDT	19991110AAR	LIC
10A PA HARRISBURG	BPCDT	20080620AGL	CP
10A WV GRANDVIEW	BMPEDT	20080916AEU	CP
11A PA JEANNETTE	BMPCDT	20080616ABM	CP
9A OH STEUBENVILLE	DTVPLN	DTVP0206	PLN

After Analysis

Results for: 10A WV CLARKSBURG BLCDT 20090612AJY LIC
HAAT 235.0 m, ATV ERP 30.0 kW

	POPULATION	AREA (sq km)
within Noise Limited Contour	731402	25497.8
not affected by terrain losses	610761	23472.3
lost to NTSC IX	0	0.0
lost to additional IX by ATV	27507	906.0
lost to ATV IX only	27507	906.0
lost to all IX	27507	906.0

Potential Interfering Stations Included in above Scenario 6

10A OH SHAKER HEIGHTS	BLCDT	19991110AAR	LIC
10A PA HARRISBURG	BPCDT	20080620AGL	CP
10A WV GRANDVIEW	BMPEDT	20080916AEU	CP
11A PA JEANNETTE	BMPCDT	20080616ABM	CP
9A OH STEUBENVILLE	USERRECORD01		APP

Percent new IX = 0.4059%

Result key: 21
Scenario 7 Affected station 9
Before Analysis

Results for: 10A WV CLARKSBURG BLCDT 20090612AJY LIC
HAAT 235.0 m, ATV ERP 30.0 kW

	POPULATION	AREA (sq km)
within Noise Limited Contour	731402	25497.8
not affected by terrain losses	610761	23472.3
lost to NTSC IX	0	0.0
lost to additional IX by ATV	23494	861.7
lost to ATV IX only	23494	861.7
lost to all IX	23494	861.7

Potential Interfering Stations Included in above Scenario 7

10A OH SHAKER HEIGHTS	BLCDT	19991110AAR	LIC
-----------------------	-------	-------------	-----

Figure 3

10A PA HARRISBURG	BLCDT	20040812AAH	LIC
10A WV GRANDVIEW	BMPEDT	20080916AEU	CP
11A PA JEANNETTE	BLCDT	20090626AAT	LIC
9A OH STEUBENVILLE	DTVPLN	DTVP0206	PLN

After Analysis

Results for: 10A WV CLARKSBURG BLCDT 20090612AJY LIC
 HAAT 235.0 m, ATV ERP 30.0 kW

	POPULATION	AREA (sq km)
within Noise Limited Contour	731402	25497.8
not affected by terrain losses	610761	23472.3
lost to NTSC IX	0	0.0
lost to additional IX by ATV	25871	902.0
lost to ATV IX only	25871	902.0
lost to all IX	25871	902.0

Potential Interfering Stations Included in above Scenario 7

10A OH SHAKER HEIGHTS	BLCDT	19991110AAR	LIC
10A PA HARRISBURG	BLCDT	20040812AAH	LIC
10A WV GRANDVIEW	BMPEDT	20080916AEU	CP
11A PA JEANNETTE	BLCDT	20090626AAT	LIC
9A OH STEUBENVILLE	USERRECORD01		APP

Percent new IX = 0.4048%

Result key: 22
 Scenario 8 Affected station 9
 Before Analysis

Results for: 10A WV CLARKSBURG BLCDT 20090612AJY LIC
 HAAT 235.0 m, ATV ERP 30.0 kW

	POPULATION	AREA (sq km)
within Noise Limited Contour	731402	25497.8
not affected by terrain losses	610761	23472.3
lost to NTSC IX	0	0.0
lost to additional IX by ATV	25130	865.8
lost to ATV IX only	25130	865.8
lost to all IX	25130	865.8

Potential Interfering Stations Included in above Scenario 8

10A OH SHAKER HEIGHTS	BLCDT	19991110AAR	LIC
10A PA HARRISBURG	BLCDT	20040812AAH	LIC
10A WV GRANDVIEW	BMPEDT	20080916AEU	CP
11A PA JEANNETTE	BMPEDT	20080616ABM	CP
9A OH STEUBENVILLE	DTVPLN	DTVP0206	PLN

After Analysis

Results for: 10A WV CLARKSBURG BLCDT 20090612AJY LIC
 HAAT 235.0 m, ATV ERP 30.0 kW

	POPULATION	AREA (sq km)
within Noise Limited Contour	731402	25497.8
not affected by terrain losses	610761	23472.3
lost to NTSC IX	0	0.0
lost to additional IX by ATV	27507	906.0
lost to ATV IX only	27507	906.0
lost to all IX	27507	906.0

Potential Interfering Stations Included in above Scenario 8

10A OH SHAKER HEIGHTS	BLCDT	19991110AAR	LIC
10A PA HARRISBURG	BLCDT	20040812AAH	LIC
10A WV GRANDVIEW	BMPEDT	20080916AEU	CP
11A PA JEANNETTE	BMPEDT	20080616ABM	CP
9A OH STEUBENVILLE	USERRECORD01		APP

Percent new IX = 0.4059%

Figure 3

Result key: 23
 Scenario 9 Affected station 9
 Before Analysis

Results for: 10A WV CLARKSBURG BLC DT 20090612AJY LIC
 HAAT 235.0 m, ATV ERP 30.0 kW

	POPULATION	AREA (sq km)
within Noise Limited Contour	731402	25497.8
not affected by terrain losses	610761	23472.3
lost to NTSC IX	0	0.0
lost to additional IX by ATV	14092	547.6
lost to ATV IX only	14092	547.6
lost to all IX	14092	547.6

Potential Interfering Stations Included in above Scenario 9

10A OH SHAKER HEIGHTS	BPCDT	20080620AKW	CP
10A PA HARRISBURG	BPCDT	20080620AGL	CP
10A WV GRANDVIEW	BDSTA	20080225AGT	APP
11A PA JEANNETTE	BLC DT	20090626AAT	LIC
9A OH STEUBENVILLE	DTVPLN	DTVP0206	PLN

After Analysis

Results for: 10A WV CLARKSBURG BLC DT 20090612AJY LIC
 HAAT 235.0 m, ATV ERP 30.0 kW

	POPULATION	AREA (sq km)
within Noise Limited Contour	731402	25497.8
not affected by terrain losses	610761	23472.3
lost to NTSC IX	0	0.0
lost to additional IX by ATV	16611	596.0
lost to ATV IX only	16611	596.0
lost to all IX	16611	596.0

Potential Interfering Stations Included in above Scenario 9

10A OH SHAKER HEIGHTS	BPCDT	20080620AKW	CP
10A PA HARRISBURG	BPCDT	20080620AGL	CP
10A WV GRANDVIEW	BDSTA	20080225AGT	APP
11A PA JEANNETTE	BLC DT	20090626AAT	LIC
9A OH STEUBENVILLE	USERRECORD01		APP

Percent new IX = 0.4222%

Result key: 24
 Scenario 10 Affected station 9
 Before Analysis

Results for: 10A WV CLARKSBURG BLC DT 20090612AJY LIC
 HAAT 235.0 m, ATV ERP 30.0 kW

	POPULATION	AREA (sq km)
within Noise Limited Contour	731402	25497.8
not affected by terrain losses	610761	23472.3
lost to NTSC IX	0	0.0
lost to additional IX by ATV	15728	551.7
lost to ATV IX only	15728	551.7
lost to all IX	15728	551.7

Potential Interfering Stations Included in above Scenario 10

10A OH SHAKER HEIGHTS	BPCDT	20080620AKW	CP
10A PA HARRISBURG	BPCDT	20080620AGL	CP
10A WV GRANDVIEW	BDSTA	20080225AGT	APP
11A PA JEANNETTE	BMPCDT	20080616ABM	CP
9A OH STEUBENVILLE	DTVPLN	DTVP0206	PLN

After Analysis

Results for: 10A WV CLARKSBURG BLC DT 20090612AJY LIC
 HAAT 235.0 m, ATV ERP 30.0 kW

	POPULATION	AREA (sq km)
--	------------	--------------

Figure 3

within Noise Limited Contour	731402	25497.8
not affected by terrain losses	610761	23472.3
lost to NTSC IX	0	0.0
lost to additional IX by ATV	18247	600.0
lost to ATV IX only	18247	600.0
lost to all IX	18247	600.0

Potential Interfering Stations Included in above Scenario 10

10A OH SHAKER HEIGHTS	BPCDT	20080620AKW	CP
10A PA HARRISBURG	BPCDT	20080620AGL	CP
10A WV GRANDVIEW	BDSTA	20080225AGT	APP
11A PA JEANNETTE	BMPCDT	20080616ABM	CP
9A OH STEUBENVILLE	USERRECORD01		APP

Percent new IX = 0.4233%

Result key: 25
Scenario 11 Affected station 9
Before Analysis

Results for: 10A WV CLARKSBURG BLCDT 20090612AJY LIC
HAAT 235.0 m, ATV ERP 30.0 kW

	POPULATION	AREA (sq km)
within Noise Limited Contour	731402	25497.8
not affected by terrain losses	610761	23472.3
lost to NTSC IX	0	0.0
lost to additional IX by ATV	14092	547.6
lost to ATV IX only	14092	547.6
lost to all IX	14092	547.6

Potential Interfering Stations Included in above Scenario 11

10A OH SHAKER HEIGHTS	BPCDT	20080620AKW	CP
10A PA HARRISBURG	BLCDT	20040812AAH	LIC
10A WV GRANDVIEW	BDSTA	20080225AGT	APP
11A PA JEANNETTE	BLCDT	20090626AAT	LIC
9A OH STEUBENVILLE	DTVPLN	DTVP0206	PLN

After Analysis

Results for: 10A WV CLARKSBURG BLCDT 20090612AJY LIC
HAAT 235.0 m, ATV ERP 30.0 kW

	POPULATION	AREA (sq km)
within Noise Limited Contour	731402	25497.8
not affected by terrain losses	610761	23472.3
lost to NTSC IX	0	0.0
lost to additional IX by ATV	16611	596.0
lost to ATV IX only	16611	596.0
lost to all IX	16611	596.0

Potential Interfering Stations Included in above Scenario 11

10A OH SHAKER HEIGHTS	BPCDT	20080620AKW	CP
10A PA HARRISBURG	BLCDT	20040812AAH	LIC
10A WV GRANDVIEW	BDSTA	20080225AGT	APP
11A PA JEANNETTE	BLCDT	20090626AAT	LIC
9A OH STEUBENVILLE	USERRECORD01		APP

Percent new IX = 0.4222%

Result key: 26
Scenario 12 Affected station 9
Before Analysis

Results for: 10A WV CLARKSBURG BLCDT 20090612AJY LIC
HAAT 235.0 m, ATV ERP 30.0 kW

	POPULATION	AREA (sq km)
within Noise Limited Contour	731402	25497.8
not affected by terrain losses	610761	23472.3
lost to NTSC IX	0	0.0

Figure 3

lost to additional IX by ATV	15728	551.7
lost to ATV IX only	15728	551.7
lost to all IX	15728	551.7

Potential Interfering Stations Included in above Scenario 12

10A OH SHAKER HEIGHTS	BPCDT	20080620AKW	CP
10A PA HARRISBURG	BLCDT	20040812AAH	LIC
10A WV GRANDVIEW	BDSTA	20080225AGT	APP
11A PA JEANNETTE	BMPCDT	20080616ABM	CP
9A OH STEUBENVILLE	DTVPLN	DTVP0206	PLN

After Analysis

Results for: 10A WV CLARKSBURG BLCDT 20090612AJY LIC

HAAT 235.0 m, ATV ERP 30.0 kW

	POPULATION	AREA (sq km)
within Noise Limited Contour	731402	25497.8
not affected by terrain losses	610761	23472.3
lost to NTSC IX	0	0.0
lost to additional IX by ATV	18247	600.0
lost to ATV IX only	18247	600.0
lost to all IX	18247	600.0

Potential Interfering Stations Included in above Scenario 12

10A OH SHAKER HEIGHTS	BPCDT	20080620AKW	CP
10A PA HARRISBURG	BLCDT	20040812AAH	LIC
10A WV GRANDVIEW	BDSTA	20080225AGT	APP
11A PA JEANNETTE	BMPCDT	20080616ABM	CP
9A OH STEUBENVILLE	USERRECORD01		APP

Percent new IX = 0.4233%

Result key: 27

Scenario 13 Affected station 9

Before Analysis

Results for: 10A WV CLARKSBURG BLCDT 20090612AJY LIC

HAAT 235.0 m, ATV ERP 30.0 kW

	POPULATION	AREA (sq km)
within Noise Limited Contour	731402	25497.8
not affected by terrain losses	610761	23472.3
lost to NTSC IX	0	0.0
lost to additional IX by ATV	10403	503.4
lost to ATV IX only	10403	503.4
lost to all IX	10403	503.4

Potential Interfering Stations Included in above Scenario 13

10A OH SHAKER HEIGHTS	BLCDT	19991110AAR	LIC
10A PA HARRISBURG	BPCDT	20080620AGL	CP
10A WV GRANDVIEW	BDSTA	20080225AGT	APP
11A PA JEANNETTE	BLCDT	20090626AAT	LIC
9A OH STEUBENVILLE	DTVPLN	DTVP0206	PLN

After Analysis

Results for: 10A WV CLARKSBURG BLCDT 20090612AJY LIC

HAAT 235.0 m, ATV ERP 30.0 kW

	POPULATION	AREA (sq km)
within Noise Limited Contour	731402	25497.8
not affected by terrain losses	610761	23472.3
lost to NTSC IX	0	0.0
lost to additional IX by ATV	12993	555.7
lost to ATV IX only	12993	555.7
lost to all IX	12993	555.7

Potential Interfering Stations Included in above Scenario 13

10A OH SHAKER HEIGHTS	BLCDT	19991110AAR	LIC
-----------------------	-------	-------------	-----

Figure 3

10A PA HARRISBURG	BPCDT	20080620AGL	CP
10A WV GRANDVIEW	BDSTA	20080225AGT	APP
11A PA JEANNETTE	BLCDT	20090626AAT	LIC
9A OH STEUBENVILLE	USERRECORD01		APP

Percent new IX = 0.4314%

Result key: 28
 Scenario 14 Affected station 9
 Before Analysis

Results for: 10A WV CLARKSBURG BLCDT 20090612AJY LIC
 HAAT 235.0 m, ATV ERP 30.0 kW

	POPULATION	AREA (sq km)
within Noise Limited Contour	731402	25497.8
not affected by terrain losses	610761	23472.3
lost to NTSC IX	0	0.0
lost to additional IX by ATV	12039	507.4
lost to ATV IX only	12039	507.4
lost to all IX	12039	507.4

Potential Interfering Stations Included in above Scenario 14

10A OH SHAKER HEIGHTS	BLCDT	19991110AAR	LIC
10A PA HARRISBURG	BPCDT	20080620AGL	CP
10A WV GRANDVIEW	BDSTA	20080225AGT	APP
11A PA JEANNETTE	BMPCDT	20080616ABM	CP
9A OH STEUBENVILLE	DTVPLN	DTVP0206	PLN

After Analysis

Results for: 10A WV CLARKSBURG BLCDT 20090612AJY LIC
 HAAT 235.0 m, ATV ERP 30.0 kW

	POPULATION	AREA (sq km)
within Noise Limited Contour	731402	25497.8
not affected by terrain losses	610761	23472.3
lost to NTSC IX	0	0.0
lost to additional IX by ATV	14629	559.7
lost to ATV IX only	14629	559.7
lost to all IX	14629	559.7

Potential Interfering Stations Included in above Scenario 14

10A OH SHAKER HEIGHTS	BLCDT	19991110AAR	LIC
10A PA HARRISBURG	BPCDT	20080620AGL	CP
10A WV GRANDVIEW	BDSTA	20080225AGT	APP
11A PA JEANNETTE	BMPCDT	20080616ABM	CP
9A OH STEUBENVILLE	USERRECORD01		APP

Percent new IX = 0.4326%

Result key: 29
 Scenario 15 Affected station 9
 Before Analysis

Results for: 10A WV CLARKSBURG BLCDT 20090612AJY LIC
 HAAT 235.0 m, ATV ERP 30.0 kW

	POPULATION	AREA (sq km)
within Noise Limited Contour	731402	25497.8
not affected by terrain losses	610761	23472.3
lost to NTSC IX	0	0.0
lost to additional IX by ATV	10403	503.4
lost to ATV IX only	10403	503.4
lost to all IX	10403	503.4

Potential Interfering Stations Included in above Scenario 15

10A OH SHAKER HEIGHTS	BLCDT	19991110AAR	LIC
10A PA HARRISBURG	BLCDT	20040812AAH	LIC
10A WV GRANDVIEW	BDSTA	20080225AGT	APP
11A PA JEANNETTE	BLCDT	20090626AAT	LIC

Figure 3

```

9A OH STEUBENVILLE      DTVPLN      DTVP0206      PLN

After Analysis

Results for: 10A WV CLARKSBURG      BLCDT      20090612AJY  LIC
  HAAT  235.0 m, ATV ERP  30.0 kW

      POPULATION      AREA (sq km)
within Noise Limited Contour      731402      25497.8
not affected by terrain losses      610761      23472.3
lost to NTSC IX                      0          0.0
lost to additional IX by ATV      12993      555.7
lost to ATV IX only                12993      555.7
lost to all IX                    12993      555.7

Potential Interfering Stations Included in above Scenario      15

10A OH SHAKER HEIGHTS      BLCDT      19991110AAR  LIC
10A PA HARRISBURG          BLCDT      20040812AAH  LIC
10A WV GRANDVIEW           BDSTA      20080225AGT  APP
11A PA JEANNETTE           BLCDT      20090626AAT  LIC
  9A OH STEUBENVILLE      USERRECORD01      APP

Percent new IX =      0.4314%

Result key:      30
Scenario      16  Affected station      9
Before Analysis

Results for: 10A WV CLARKSBURG      BLCDT      20090612AJY  LIC
  HAAT  235.0 m, ATV ERP  30.0 kW

      POPULATION      AREA (sq km)
within Noise Limited Contour      731402      25497.8
not affected by terrain losses      610761      23472.3
lost to NTSC IX                      0          0.0
lost to additional IX by ATV      12039      507.4
lost to ATV IX only                12039      507.4
lost to all IX                    12039      507.4

Potential Interfering Stations Included in above Scenario      16

10A OH SHAKER HEIGHTS      BLCDT      19991110AAR  LIC
10A PA HARRISBURG          BLCDT      20040812AAH  LIC
10A WV GRANDVIEW           BDSTA      20080225AGT  APP
11A PA JEANNETTE           BMPCDT      20080616ABM  CP
  9A OH STEUBENVILLE      DTVPLN      DTVP0206      PLN

After Analysis

Results for: 10A WV CLARKSBURG      BLCDT      20090612AJY  LIC
  HAAT  235.0 m, ATV ERP  30.0 kW

      POPULATION      AREA (sq km)
within Noise Limited Contour      731402      25497.8
not affected by terrain losses      610761      23472.3
lost to NTSC IX                      0          0.0
lost to additional IX by ATV      14629      559.7
lost to ATV IX only                14629      559.7
lost to all IX                    14629      559.7

Potential Interfering Stations Included in above Scenario      16

10A OH SHAKER HEIGHTS      BLCDT      19991110AAR  LIC
10A PA HARRISBURG          BLCDT      20040812AAH  LIC
10A WV GRANDVIEW           BDSTA      20080225AGT  APP
11A PA JEANNETTE           BMPCDT      20080616ABM  CP
  9A OH STEUBENVILLE      USERRECORD01      APP

Percent new IX =      0.4326%

Worst case new IX      0.4326% Scenario      14

#####

```

Figure 3

Analysis of Interference to Affected Station 10

Analysis of current record

Channel	Call	City/State	Application Ref. No.
09	WTOV	STEUBENVILLE OH	USERRECORD-01

Stations Potentially Affecting This Station

Chan	Call	City/State	Dist(km)	Status	Application Ref. No.
08	WJW	CLEVELAND OH	146.1	LIC	BLCDT -20090612AJC
08	WJW	CLEVELAND OH	146.1	CP MOD	BMPCDT -20080620AHI
08	WWCP-TV	JOHNSTOWN PA	125.9	CP MOD	BMPCDT -20080620AIX
09	WUSA	WASHINGTON DC	340.2	LIC	BLCDT -20090617ABW
09	WUSA	WASHINGTON DC	340.2	APP	BPCDT -20100625AZO
10	WOIO	SHAKER HEIGHTS OH	147.1	CP	BPCDT -20080620AKW
10	WOIO	SHAKER HEIGHTS OH	147.1	LIC	BLCDT -19991110AAR
10	WVFX	CLARKSBURG WV	118.2	LIC	BLCDT -20090612AJY

Total scenarios = 4

Result key: 31

Scenario 1 Affected station 10

Before Analysis

Results for: 9A OH STEUBENVILLE USERRECORD01 APP

HAAT 282.0 m, ATV ERP 30.0 kW

	POPULATION	AREA (sq km)
within Noise Limited Contour	4028029	31560.6
not affected by terrain losses	3772708	29332.9
lost to NTSC IX	0	0.0
lost to additional IX by ATV	12373	152.5
lost to ATV IX only	12373	152.5
lost to all IX	12373	152.5

Potential Interfering Stations Included in above Scenario 1

8A OH CLEVELAND	BLCDT	20090612AJC	LIC
8A PA JOHNSTOWN	BMPCDT	20080620AIX	CP
9A DC WASHINGTON	BLCDT	20090617ABW	LIC
10A OH SHAKER HEIGHTS	BPCDT	20080620AKW	CP
10A WV CLARKSBURG	BLCDT	20090612AJY	LIC

Result key: 32

Scenario 2 Affected station 10

Before Analysis

Results for: 9A OH STEUBENVILLE USERRECORD01 APP

HAAT 282.0 m, ATV ERP 30.0 kW

	POPULATION	AREA (sq km)
within Noise Limited Contour	4028029	31560.6
not affected by terrain losses	3772708	29332.9
lost to NTSC IX	0	0.0
lost to additional IX by ATV	12373	152.5
lost to ATV IX only	12373	152.5
lost to all IX	12373	152.5

Potential Interfering Stations Included in above Scenario 2

8A OH CLEVELAND	BMPCDT	20080620AHI	CP
8A PA JOHNSTOWN	BMPCDT	20080620AIX	CP
9A DC WASHINGTON	BLCDT	20090617ABW	LIC
10A OH SHAKER HEIGHTS	BPCDT	20080620AKW	CP
10A WV CLARKSBURG	BLCDT	20090612AJY	LIC

Result key: 33

Scenario 3 Affected station 10

Before Analysis

Figure 3

```
Results for:  9A OH STEUBENVILLE      USERRECORD01      APP
             HAAT  282.0 m, ATV ERP   30.0 kW

              POPULATION    AREA (sq km)
within Noise Limited Contour      4028029      31560.6
not affected by terrain losses    3772708      29332.9
lost to NTSC IX                    0           0.0
lost to additional IX by ATV      12624       156.5
lost to ATV IX only               12624       156.5
lost to all IX                   12624       156.5

Potential Interfering Stations Included in above Scenario      3

8A OH CLEVELAND      BLCDT      20090612AJC  LIC
8A PA JOHNSTOWN      BMPCDT      20080620AIX  CP
9A DC WASHINGTON      BPCDT      20100625AZO  APP
10A OH SHAKER HEIGHTS BPCDT      20080620AKW  CP
10A WV CLARKSBURG    BLCDT      20090612AJY  LIC

Result key:          34
Scenario             4  Affected station      10
Before Analysis

Results for:  9A OH STEUBENVILLE      USERRECORD01      APP
             HAAT  282.0 m, ATV ERP   30.0 kW

              POPULATION    AREA (sq km)
within Noise Limited Contour      4028029      31560.6
not affected by terrain losses    3772708      29332.9
lost to NTSC IX                    0           0.0
lost to additional IX by ATV      12624       156.5
lost to ATV IX only               12624       156.5
lost to all IX                   12624       156.5

Potential Interfering Stations Included in above Scenario      4

8A OH CLEVELAND      BMPCDT      20080620AHI  CP
8A PA JOHNSTOWN      BMPCDT      20080620AIX  CP
9A DC WASHINGTON      BPCDT      20100625AZO  APP
10A OH SHAKER HEIGHTS BPCDT      20080620AKW  CP
10A WV CLARKSBURG    BLCDT      20090612AJY  LIC

#####

FINISHED FINISHED FINISHED FINISHED FINISHED FINISHED
```

APPENDIX

TRANSMITTING ANTENNA
VERTICAL PLANE PATTERN



Date
Call Letters
Location
Customer
Antenna Type

23-Oct-02
WTOV
Steubenville, OH
Cox Communications
TW-12B9-R

Channel

9

MEASURED ELEVATION PATTERN

RMS Gain at Main Lobe **12.00 (10.79 dB)**

Beam Tilt
Frequency
Plane

0.75 deg
189.00 MHz

1

