



LONG COMMUNICATIONS

R.R. #3, Box 194 • Troy, PA 16947

Toll Free 1-866-511-2929 • Fax 570-297-4385

email: longcomm@epix.net

04Apr11

To whom it may concern,

I certify that, on March 28, 2011, at the request of Pensacola Christian College, I evaluated the signal reception of WSQA (88.7FM) at the Newtown Hill Rd. Tower site for W201BZ and found WSQA to be clear and strong both at the site and in the town of Mansfield, PA.

Daryl Long
Long Communications
9512 Route 6
Troy, PA 16947
(570) 297-4231
(866) 511-2929



du Treil, Lundin, & Rackley, Inc., Sarasota, Florida

FM Contour Study

Channel: 206 **Coordinates:** 041-49-48 077-01-24 (NAD 27) **ERP:** 0.01 kW **Max. HAAT:** 177 m

Comment: Proposed W201BZ

Callsign	Chan.	Service	Status	Freq.	City	State	Co.	Rec.	Latitude	Dist. (km)	Sep. (km)	Spac. (km)
Facility ID	ARN			Class	DA	73.215	ERP (kW)	HAAT (m)	Longitude	Bear. (deg)	Comment	
WCII	203	FM	LIC	88.5	SPENCER	NY	US	C	42-00-50	66.16	52.99	13.17
20635	BLED	19940523KA	B	D	N		17	180	076-15-53	71.7	CLOSE	
WCII 60.0 dBu desired distance: 52.8 km				Proposed 100.0 dBu undesired distance: 0.2 km								
Proposed 60.0 dBu desired distance: 7.7 km				WCII 100.0 dBu undesired distance: 5.7 km								
W205BR	205	FX	LIC	88.9	ELMIRA	NY	US	C	42-07-36	38.07	19.37	18.7
88492	BMLFT	20060616ABL	D	D	N		0.006	158	076-47-36	29.88	CLEAR	
W205BR 60.0 dBu desired distance: 8.2 km				Proposed 54.0 dBu undesired distance: 11.0 km								
Proposed 60.0 dBu desired distance: 7.7 km				W205BR 54.0 dBu undesired distance: 11.6 km								
WCID	206	FM	LIC	89.1	FRIENDSHIP	NY	US	C	42-07-07	100.98	113.2	-12.22
20640	BLED	19900112KB	B1	N	N		7	150	078-10-43	288.96	SHORT	Note 1
WCID 60.0 dBu desired distance: 41.6 km				Proposed 40.0 dBu undesired distance: 26.1 km								
Proposed 60.0 dBu desired distance: 7.7 km				WCID 40.0 dBu undesired distance: 105.5 km								
WSKG-FM	207	FM	LIC	89.3	BINGHAMTON	NY	US	C	42-03-40	92.94	96.45	-3.51
74039	BLED	20040115ABK	B	N	N		11.5	317	075-56-46	73.55	SHORT	Note 1
WSKG-FM 60.0 dBu desired distance: 59.6 km				Proposed 54.0 dBu undesired distance: 11.0 km								
Proposed 60.0 dBu desired distance: 7.7 km				WSKG-FM 54.0 dBu undesired distance: 88.7 km								
WRWV	207	FM	CP	89.3	BEECH CREEK	PA	US	C	41-07-12	85.12	79.75	5.37
175214	BNPED	20071019AGL	B1	D	N		4.9	224	077-24-25	202.17	CLOSE	
WRWV 60.0 dBu desired distance: 48.1 km				Proposed 54.0 dBu undesired distance: 11.0 km								
Proposed 60.0 dBu desired distance: 7.7 km				WRWV 54.0 dBu undesired distance: 72.0 km								
WNTE	208	FM	LIC	89.5	MANSFIELD	PA	US	C	41-48-23	4.93	8.36	-3.43
39817	BLED	20051025ABM	A	N	N		0.115	-85	077-04-25	237.8	SHORT	Note 2
WNTE 60.0 dBu desired distance: 6.2 km				Proposed 100.0 dBu undesired distance: 0.2 km								
Proposed 60.0 dBu desired distance: 7.7 km				WNTE 100.0 dBu undesired distance: 0.6 km								
W259AW	259	FX	LIC	99.7	MAINESBURG	PA	US	C	41-45-34	11.31	29	-17.69
141556	BLFT	20050606ABH	D	N	N		0.0065	252.9	076-55-31	133.95	SHORT	Note 3

Note 1: Proposal complies with the contour overlap provisions of Section 73.1204. See Exhibit 17 and Figure 3.

Note 2: A waiver of the contour overlap requirements of Section 73.1204 is requested. It is demonstrated that the potential interference area will contain no population. See Exhibit 17 and Figure 4.

Note 3: Intermediate frequency (IF) separation requirements not applicable.

The map displays the Elmira, NY area, including parts of Seneca, Yates, and Steuben counties. Key locations marked include Elmira, Ithaca, and Binghamton. The map shows the proposed W201BZ coverage area, which is a large, irregularly shaped region centered on Elmira. The coverage area is divided into three main sections, each with a specific signal strength and frequency:

- WCID 60 dBu, F(50,50)**: This section covers the western part of the area, including the town of Ithaca.
- WSKG-FM 60 dBu, F(50,50)**: This section covers the central part of the area, including the town of Elmira.
- Proposed W201BZ 40 dBu, F(50,10) / 54 dBu, F(50,10)**: This section covers the eastern part of the area, including the town of Binghamton.

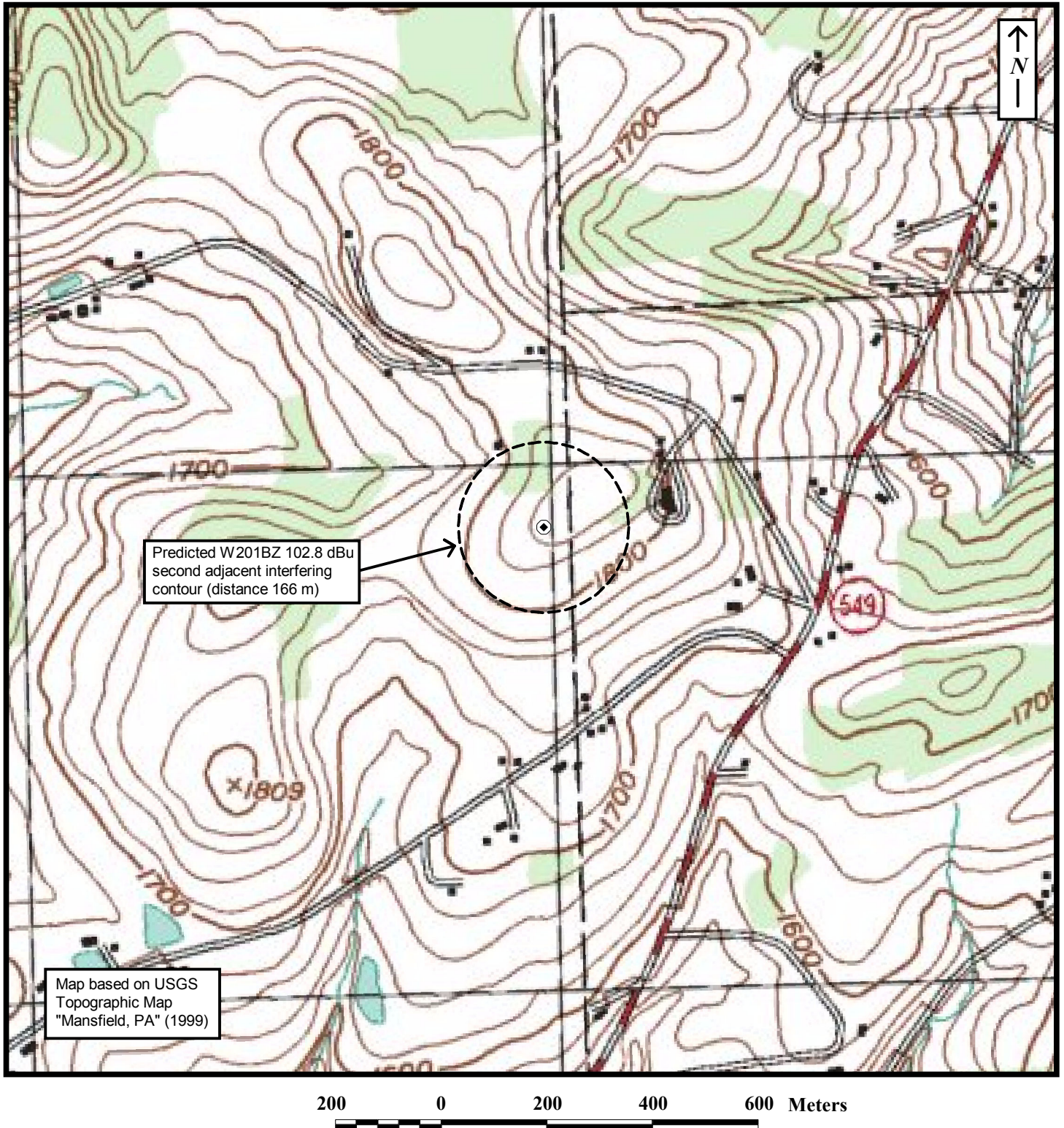
A note in the bottom left corner states: "WNTD 60 dBu, F(50,50) (Note: Figure 4 demonstrates that the predicted WNTD interference area contains no population based on a U/D ratio method)".

The map includes a scale bar at the bottom indicating distances in kilometers (0, 20, 40, 60).

FM TRANSLATOR STATION W201BZ
MANSFIELD, PENNSYLVANIA
CH 206 0.01 KW 585 M AMSL

du Treil, Lundin & Rackley, Inc. Sarasota, Florida

Figure 4

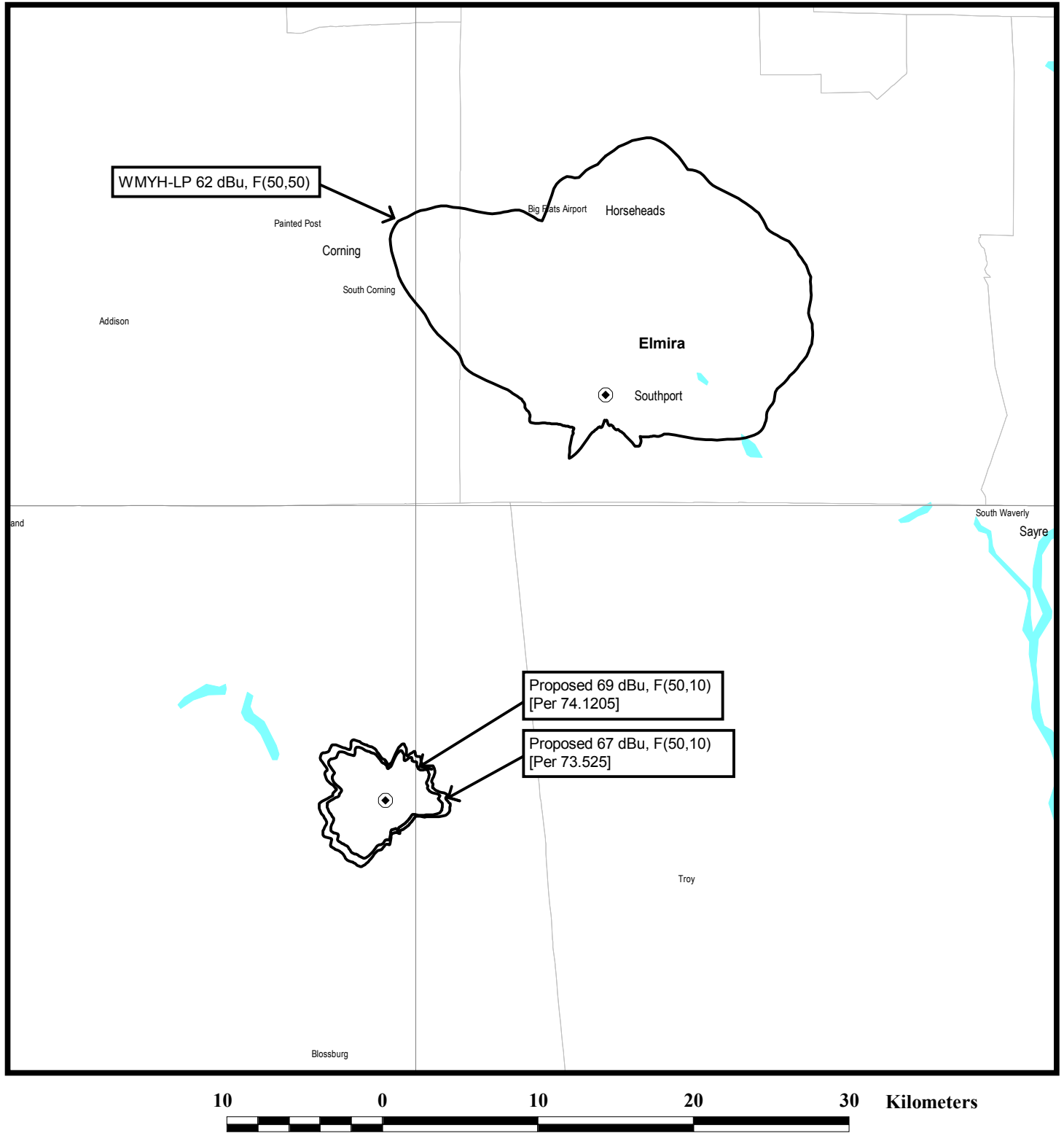


DETAILED INTERFERENCE ANALYSIS TO WNTD

FM TRANSLATOR STATION W201BZ
MANSFIELD, PENNSYLVANIA
CH 206 0.01 KW 585 M AMSL

du Treil, Lundin & Rackley, Inc. Sarasota, Florida

Figure 5

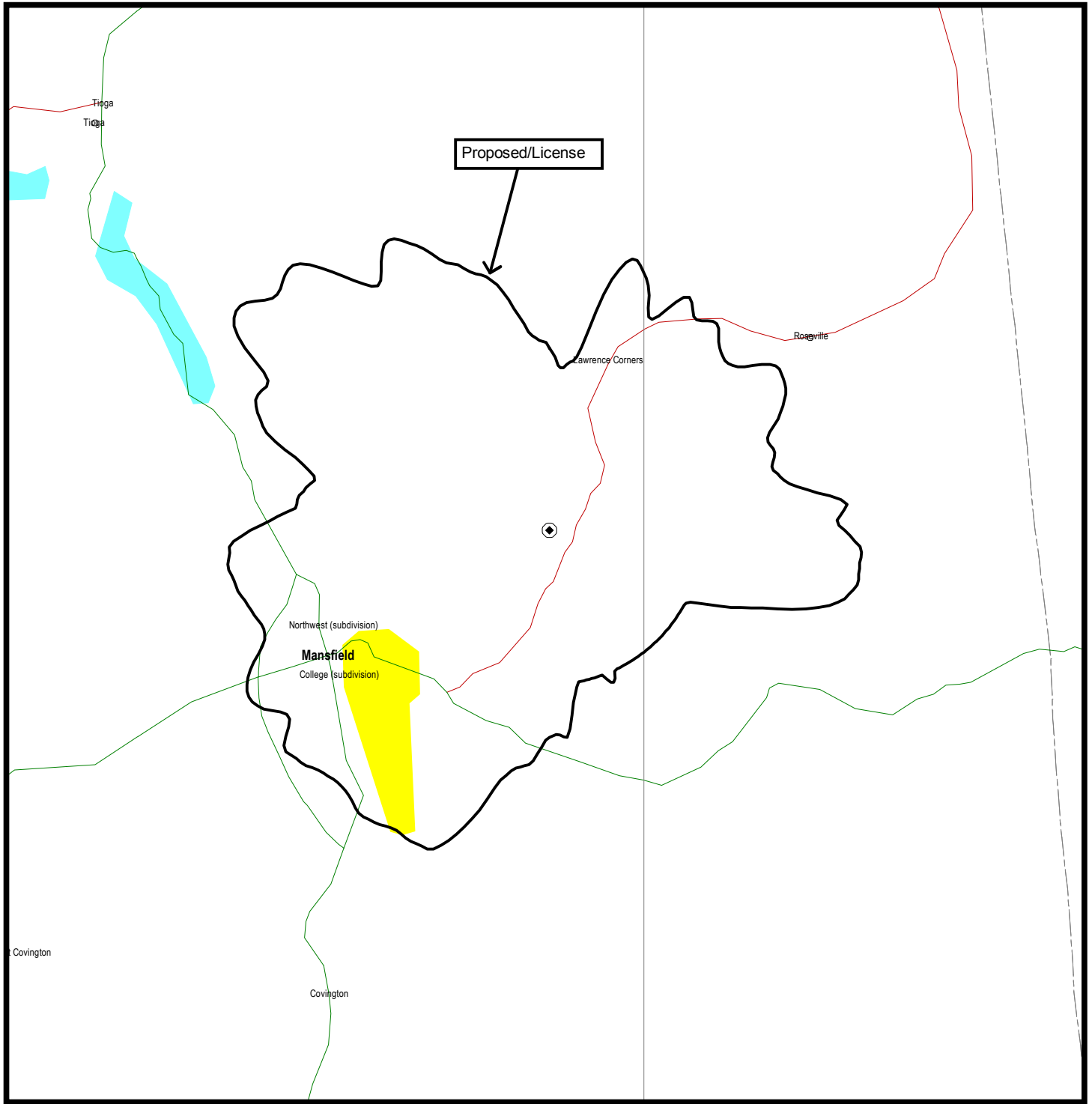


COMPLIANCE WITH SECTION 74.1205

FM TRANSLATOR STATION W201BZ
MANSFIELD, PENNSYLVANIA
CH 206 0.01 KW 585 M AMSL

du Treil, Lundin & Rackley, Inc. Sarasota, Florida

Figure 6



2 0 2 4 6 8 Kilometers

FCC PREDICTED 60 DBU CONTOURS

FM TRANSLATOR STATION W201BZ
MANSFIELD, PENNSYLVANIA
CH 206 0.01 KW 585 M AMSL

du Treil, Lundin & Rackley, Inc. Sarasota, Florida

TOWAIR Determination Results

*** NOTICE ***

TOWAIR's findings are not definitive or binding, and we cannot guarantee that the data in TOWAIR are fully current and accurate. In some instances, TOWAIR may yield results that differ from application of the criteria set out in 47 C.F.R. Section 17.7 and 14 C.F.R. Section 77.13. A positive finding by TOWAIR recommending notification should be given considerable weight. On the other hand, a finding by TOWAIR recommending either for or against notification is not conclusive. It is the responsibility of each ASR participant to exercise due diligence to determine if it must coordinate its structure with the FAA. TOWAIR is only one tool designed to assist ASR participants in exercising this due diligence, and further investigation may be necessary to determine if FAA coordination is appropriate.

DETERMINATION Results

Structure does not require registration. There are no airports within 8 kilometers (5 miles) of the coordinates you provided.

Your Specifications

NAD83 Coordinates

Latitude	41-49-48.3 north
Longitude	077-01-22.9 west

Measurements (Meters)

Overall Structure Height (AGL)	24
Support Structure Height (AGL)	24
Site Elevation (AMSL)	561

Structure Type

TOWER - Free standing or Guyed Structure used for Communications Purposes

[Tower Construction Notifications](#)

Notify Tribes and Historic Preservation Officers of your plans to build a tower.

CLOSE WINDOW