



Polaris Services, L.L.C.
Consulting Engineers - Land Surveyors
Gerald Fussell, P.E., P.L.S. (LA)
Randall B. Noble, P.L.S. (AR & TX)
Don R. Wood II, P.L.S. (LA)

3602 North Market St.
Shreveport, La 71107
polaris@polarisservices.net

Ph: (318) 673-9985
Fax: (318) 673-9986

April 5, 2010

TO WHOM IT MAY CONCERN

RE: DIRECTIONAL ANTENNA [Three (3) Bay]
KFLO-FM, BLANCHARD, LA.

This is to certify that I, Don R. Wood II, am a Professional Land Surveyor, Number 4716, licensed by the State of Louisiana and that on March 23, 2010, a survey was made under my direct supervision for the installation of the three (3) bay directional FM antenna for radio station KFLO-FM, Blanchard, Louisiana. We found that the antenna had been installed in accordance with the manufacturer's, ERI, instructions. Further we find that the antenna was mounted on the tower and is oriented at a true azimuth of 0 degrees or True North. We believe that the azimuth is plus or minus

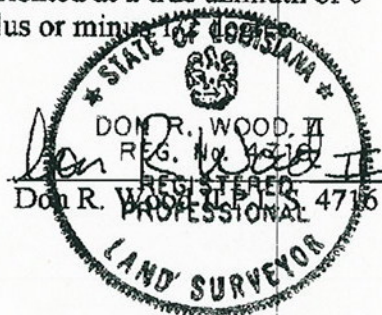


EXHIBIT D