

KBOZ(AM) Form 301
Exhibit 1 – Parties to the Application

Desert Mountain Broadcasting Licenses LLC

Desert Mountain Broadcasting Licenses LLC is a Montana limited liability company. The following are the officers and shareholder of Desert Mountain Broadcasting Licenses LLC.

Name and Address	Citizenship	Positional Interest	% of Votes	% of Total Assets
Desert Mountain Broadcasting Licenses LLC 2075 Central Avenue Billings, MT 59102	Montana Limited Liability Company	Licensee	N/A	N/A
Cameron Maxwell 2075 Central Avenue Billings, MT 59102	U.S.	President and CEO	0	0
Desert Mountain Broadcasting LLC 2075 Central Avenue Billings, MT 59102	Montana Limited Liability Company	Sole Shareholder	100	100

Desert Mountain Broadcasting LLC

Desert Mountain Broadcasting LLC is a Montana limited liability company. The following are the officers and shareholder of Desert Mountain Broadcasting LLC.

Name and Address	Citizenship	Positional Interest	% of Votes	% of Total Assets
Desert Mountain Broadcasting LLC 2075 Central Avenue Billings, MT 59102	Montana Limited Liability Company	N/A	N/A	N/A
Cameron Maxwell 2075 Central Avenue Billings, MT 59102	U.S.	President and CEO, Sole Shareholder	100	100

KBOZ(AM) Form 301
Exhibit 2 – Other Authorizations

Desert Mountain Broadcasting Licenses LLC is the licensee of the following full-power broadcast stations:

KBLG(AM), Billings, Montana (FCC Facility ID 63873)
KPLN(FM), Lockwood, Montana (FCC Facility ID 164108)
KRKX(FM), Billings, Montana (FCC Facility ID 63870)
KRZN(FM), Billings, Montana (FCC Facility ID 78476)
KWMY(FM), Joliet, Montana (FCC Facility ID 164107)
KYYA(AM), Billings, Montana (FCC Facility ID 19216)
KYWL(AM), Bozeman, Montana (FCC Facility ID 161553)
KBOZ(AM), Bozeman, Montana (FCC Facility ID 16775)
KOZB(FM), Livingston, Montana (FCC Facility ID 16777)
KOB-AM, Bozeman, Montana (FCC Facility ID 16776)
KBOZ-FM, Bozeman, Montana (FCC Facility ID 55676)
KOB-AM, Bozeman, Montana (FCC Facility ID 55677)

STEPHEN S. LOCKWOOD, PE, PMP

THOMAS M. ECKELS, PE
THOMAS S. GORTON, PE

JAMES B. HATFIELD, PE
BENJAMIN F. DAWSON III, PE
ERIK C. SWANSON, PE, PMP
DAVID J. PINION, PE
STEPHEN PUMPLE, M.Eng, MBA, PMP
CONSULTANTS

HATFIELD & DAWSON
CONSULTING ELECTRICAL ENGINEERS
9500 GREENWOOD AVE. N.
SEATTLE, WASHINGTON 98103

TELEPHONE (206) 783-9151
FACSIMILE (206) 789-9834
E-MAIL hatdaw@hatdaw.com

MAURY L. HATFIELD, PE
(1942-2009)
PAUL W. LEONARD, PE
(1925-2011)

MULTIPLE OWNERSHIP SERVICE CONTOUR ANALYSIS

Prepared for Desert Mountain Broadcasting Licenses, LLC March 2022

The attached analysis of compliance with the radio multiple ownership rules was prepared in accordance with the Rules and Regulations of the Federal Communications Commission, in connection with a set of minor modification applications for AM stations KYWL, KOBZ, and KBOZ, filed by Desert Mountain Broadcasting Licenses, LLC. The licensee will have an attributable interest in the following stations in the Bozeman market, all of which have an area of common overlap:

KYWL	1480 kHz	Bozeman
KOBZ	1230 kHz	Bozeman
KBOZ	1090 kHz	Bozeman
KOBZ-FM	229C1	Bozeman
KBOZ-FM	260C3	Bozeman
KOZB(FM)	248C1	Livingston

This exhibit addresses the stations in their final configuration (i.e. as proposed).

Unrated Market

These stations operate outside any market rated by Nielsen. Therefore, analysis has been made consistent with the Commission's interim rules for unrated markets. The 70 dBu contours of FM stations were determined from the technical data contained in the most recent edition of the FCC FM Database. The listed antenna height above average terrain was used together with topographic data obtained from the digitized 30 second or 3 second database. The 5 mV/m

daytime contours of AM stations were determined from the technical data contained in the most recent edition of the FCC AM Database. The listed antenna parameter information was used together with a digitized version of the FCC M-3 or Region II ground conductivity database.

The service contours were plotted using correct map projection mathematics. Those stations whose transmitter sites are within the respective principal community service contours of the stations proposed to be commonly owned have only the sites rather than their contours shown. All contours and enclosed transmitter site locations have been labeled. A list of all stations considered is included with this statement.

In counting stations providing service to the “market” defined by each of the discrete clusters formed in unrated markets, stations whose transmitter sites are located in excess of 92 km from the perimeter of the common overlap area have been excluded, as have other stations to be commonly-owned but which are not a part of the discrete cluster being studied.

Analysis

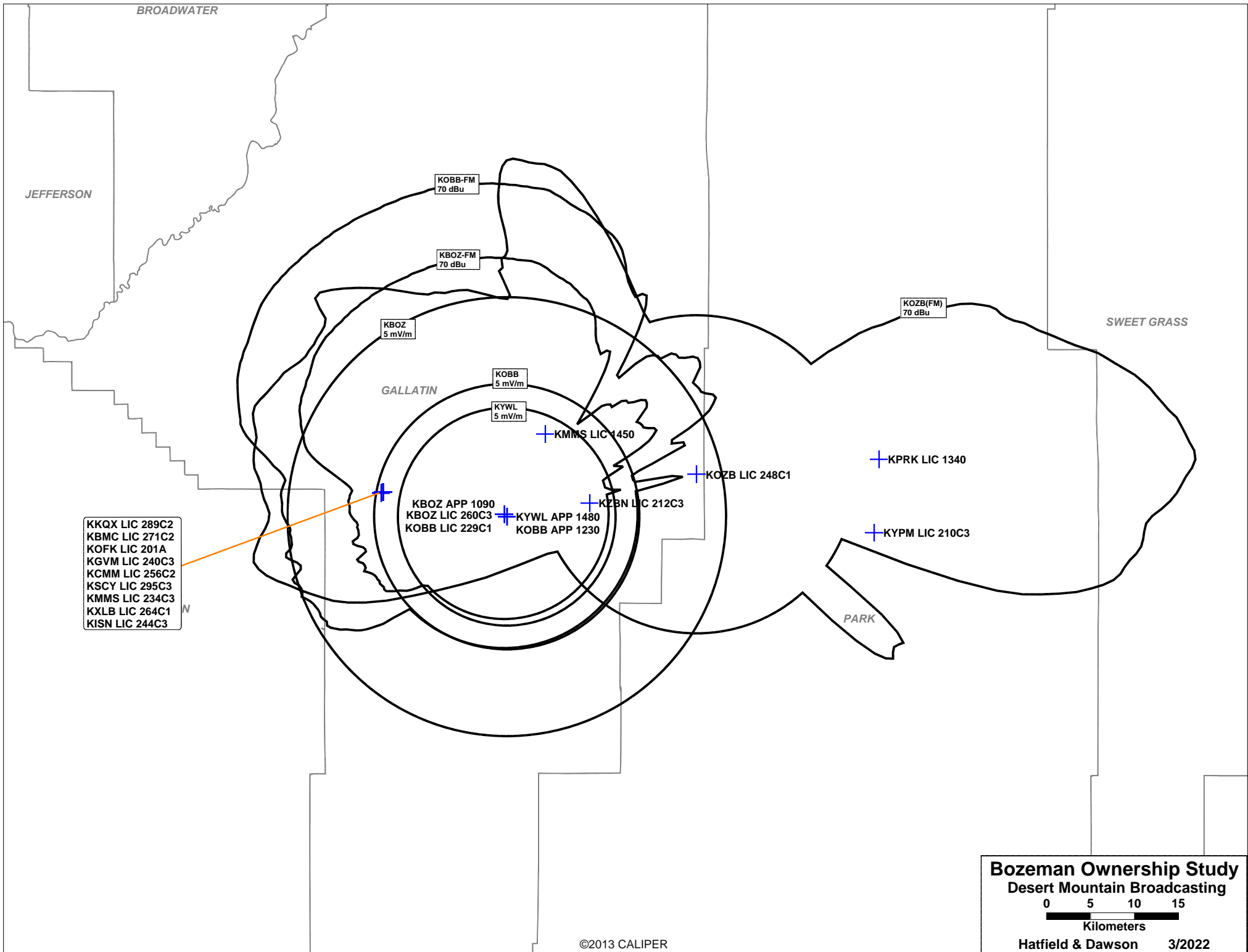
These stations form a single cluster of stations for ownership purposes. This exhibit evidences at least the minimum number of stations necessary to demonstrate compliance with the rules concerning radio multiple ownership in unrated markets. In order to qualify for common ownership of this 3AM/3FM cluster, there must be at least 15 stations in the relevant “market”. This study demonstrates that there are at least 19 stations in the relevant market. (Several additional stations also overlap the Desert Broadcasting cluster, but are omitted from this exhibit for the sake of simplicity since their transmitter sites are located outside the contours of the Desert Broadcasting cluster. A list and mapping of those stations can be provided should the Commission so require.)

March 28, 2022

A handwritten signature in black ink, appearing to read "Erik C. Swanson". The signature is fluid and cursive, with the first name "Erik" and last name "Swanson" clearly distinguishable.

Erik C. Swanson

Hatfield & Dawson Consulting Engineers



STEPHEN S. LOCKWOOD, PE, PMP

THOMAS M. ECKELS, PE
THOMAS S. GORTON, PE

JAMES B. HATFIELD, PE
BENJAMIN F. DAWSON III, PE
ERIK C. SWANSON, PE, PMP
DAVID J. PINION, PE
STEPHEN PUMPLE, M.Eng, MBA, PMP
CONSULTANTS

HATFIELD & DAWSON
CONSULTING ELECTRICAL ENGINEERS
9500 GREENWOOD AVE. N.
SEATTLE, WASHINGTON 98103

TELEPHONE (206) 783-9151
FACSIMILE (206) 789-9834
E-MAIL hatdaw@hatdaw.com

MAURY L. HATFIELD, PE
(1942-2009)
PAUL W. LEONARD, PE
(1925-2011)

ENGINEERING REPORT

APPLICATION for CONSTRUCTION PERMIT to RELOCATE ANTENNA

KOBB(AM)

1230 kHz

Bozeman, Montana

Facility ID 55677

1 kW ND-U

Desert Mountain Broadcasting Licenses, LLC

April 2022

Purpose of Application

This Engineering Report has been prepared in support of an application by Desert Mountain Broadcasting License, LLC ("Desert Mountain") to relocate the antenna of KOB(AM), 1230 kHz, Bozeman, Montana. Desert Mountain proposes combined operation with KBOZ and KYWL on the southeast tower of the existing KBOZ array. No tower construction is proposed.

Allocation Considerations

Daytime

The proposed daytime 1 kW omni-directional operation of KOB(AM) will not result in prohibited contour overlap with any known facility, with the exception of co-channel KXLO, Lewistown, MT. Existing overlap with KXLO is reduced by this proposal, as demonstrated by the daytime allocation study maps included in this report. No second or third adjacent channel maps are included, as there are no such facilities close enough to require study. All allocation study maps and exhibits included in this report are based on data from the April 18, 2022 edition of the CDBS. M3 ground conductivity was used in all cases.

Nighttime

The proposed nighttime operation of KOB(AM) will not enter the 50% RSS of any co-channel Canadian facility, or the 50% RSS of any adjacent channel domestic facility as demonstrated by the Site to Site RSS calculations included in this report. This exhibit considers all facilities listed in the CDBS for which KOB(AM) will exceed the 10% RSS threshold.

Facilities Proposed

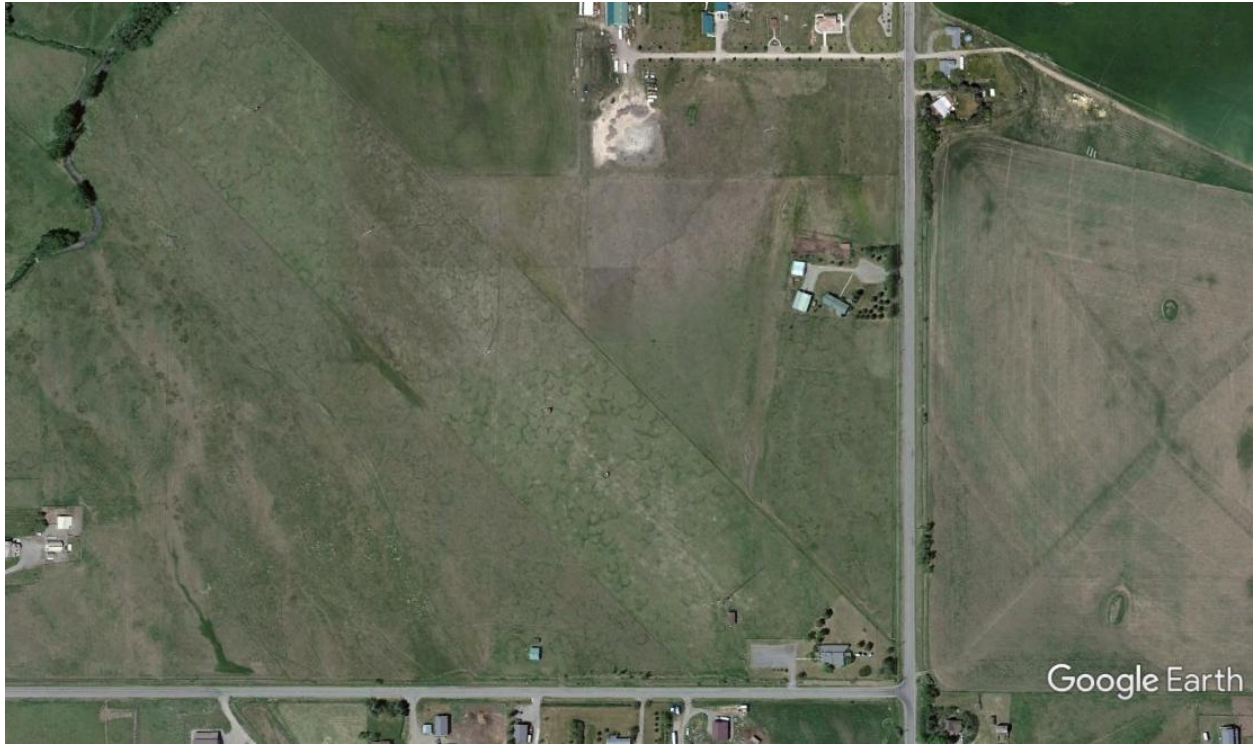
Desert Mountain proposes continued operation of KOBZ on 1230 kHz with a power of 1 kW unlimited time, using an omni-directional antenna (ND-U). The proposed tower is the southeast (#5) tower of the currently licensed KBOZ array. Common antenna operation with co-owned KBOZ(AM) and KYWL(AM) is proposed. This tower is 108° at 1230 kHz, resulting in an antenna efficiency of 317.4 mV/m/km at 1 kW.

The daytime 5 mV/m contour will cover 100% of Bozeman.

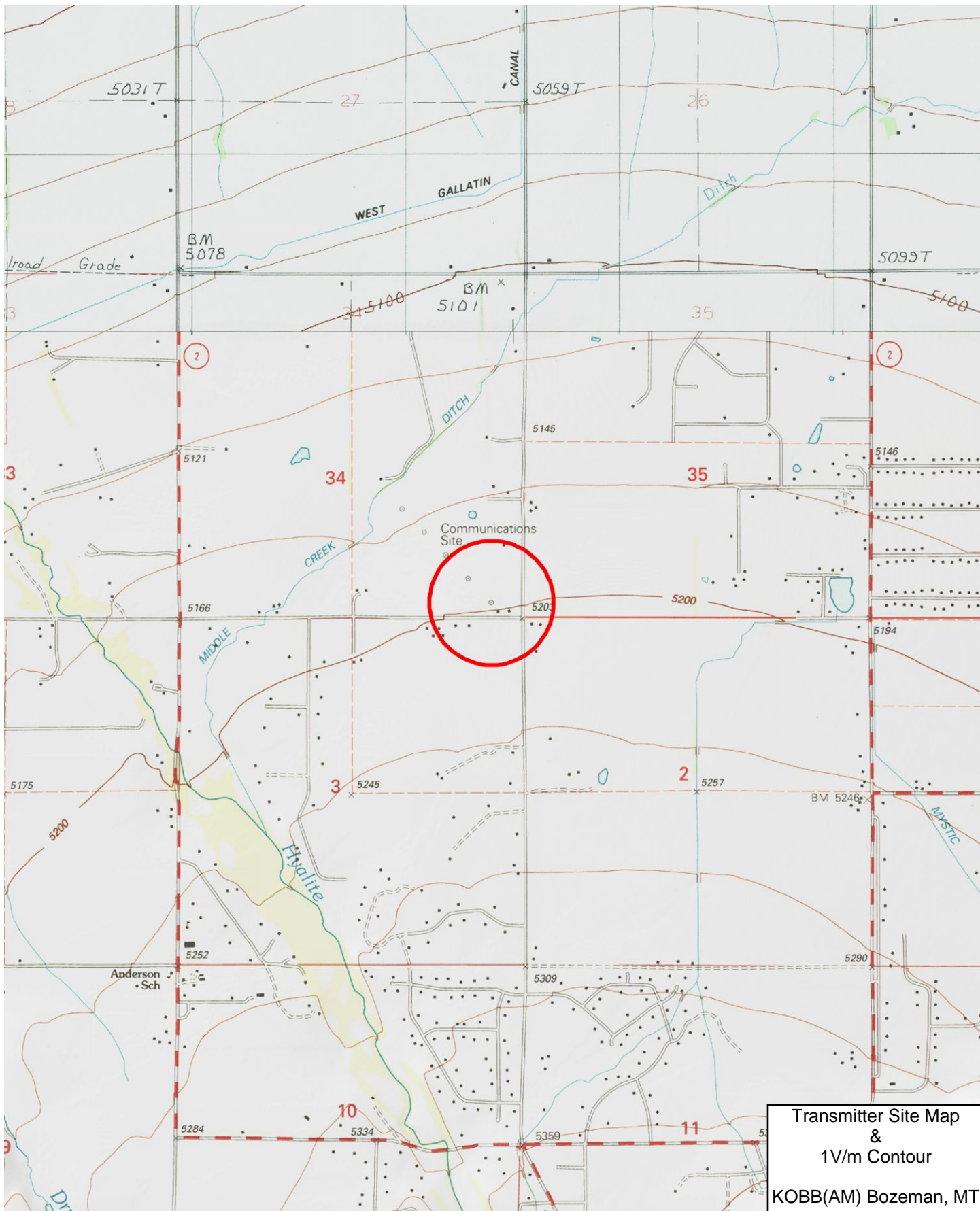
The area within the 1V/m blanketing contour of the 1 kW operation of KOBZ is unpopulated, thus satisfying the requirements of §73.24(g).

The ground system consists of 120 copper radials, 125 feet in length and an additional 120 radials, 150 feet in length around the base of each tower.

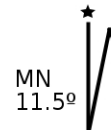
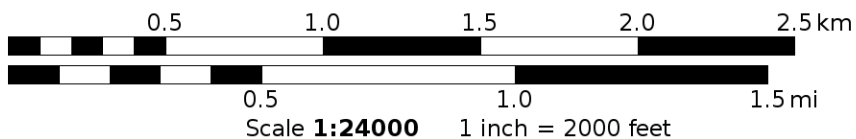
Antenna tower access is restricted by a fence with a locked gate that is at least 2 meters from the tower base, as required by OET-65. The antenna tower is posted with warning signs, and all station personnel and contractors will be required to follow appropriate safety procedures before any work is commenced on the antenna tower, including reduction in power or discontinuance of operation before any maintenance work is undertaken.

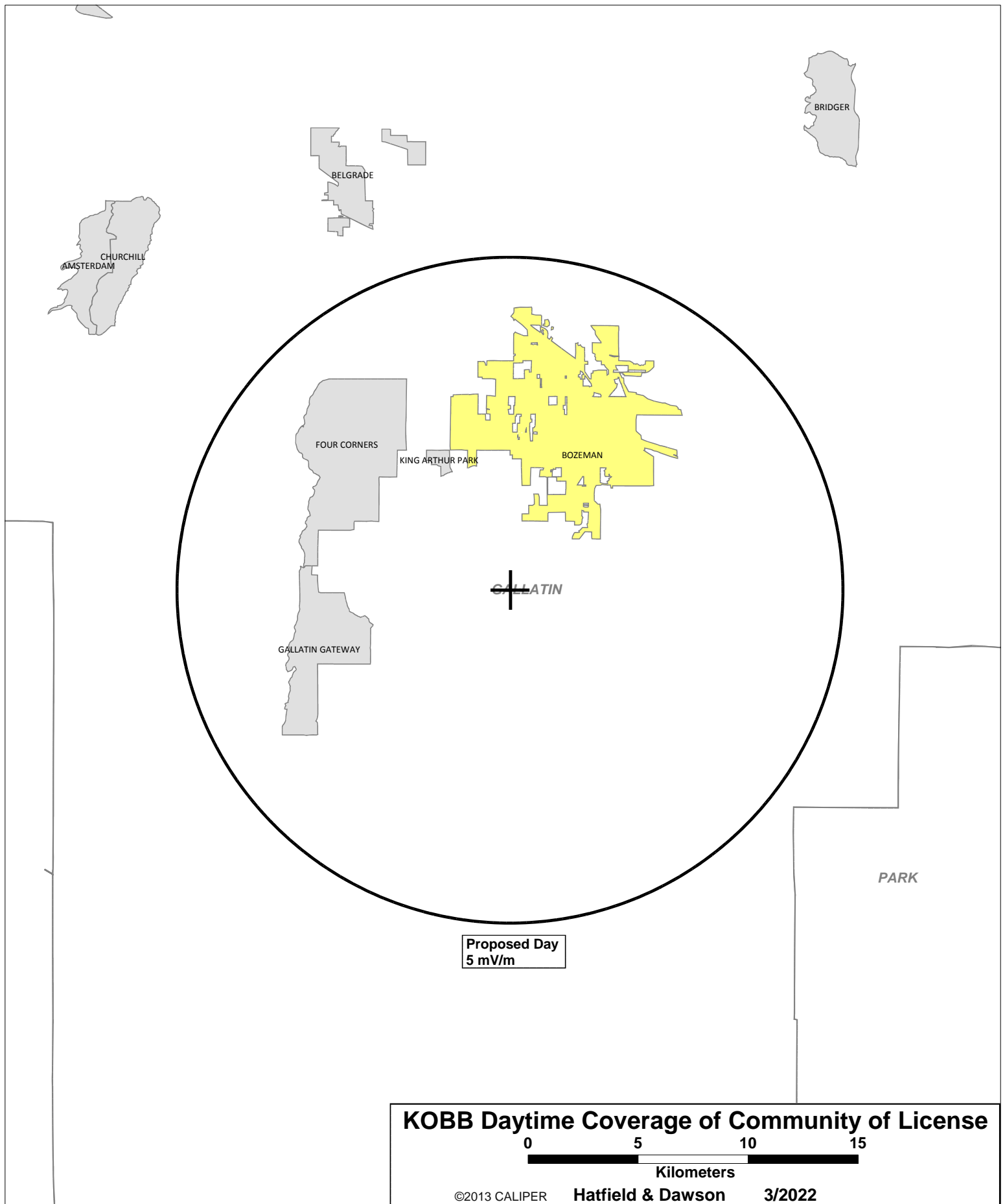


KOBB Transmitter Site Photograph



Mercator Projection
WGS84
UTM Zone 12T



KOBB

Freq: 1230 kHz

Class: C

Latitude: 45-36-50 N

Longitude: 111-05-05 W

Power: 1 kW

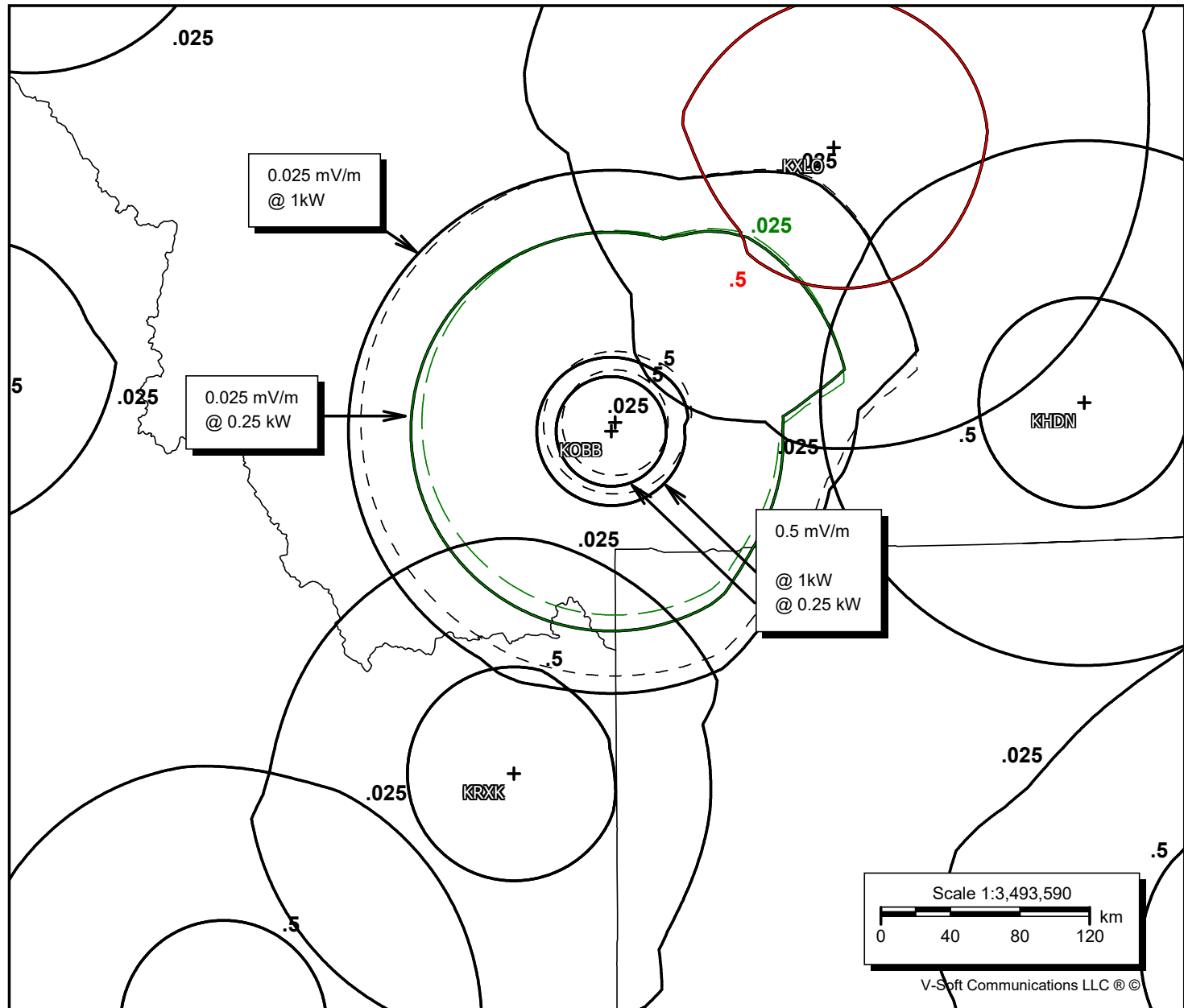
RMS: 317.363 mV/m @1km

Towers: 1

Augs: 0

Daytime
Co-Channel
Allocation Study

Dashed Lines are
Licensed Contours



KOBB

Freq: 1230 kHz

Class: C

Latitude: 45-36-50 N

Longitude: 111-05-05 W

Power: 1 kW

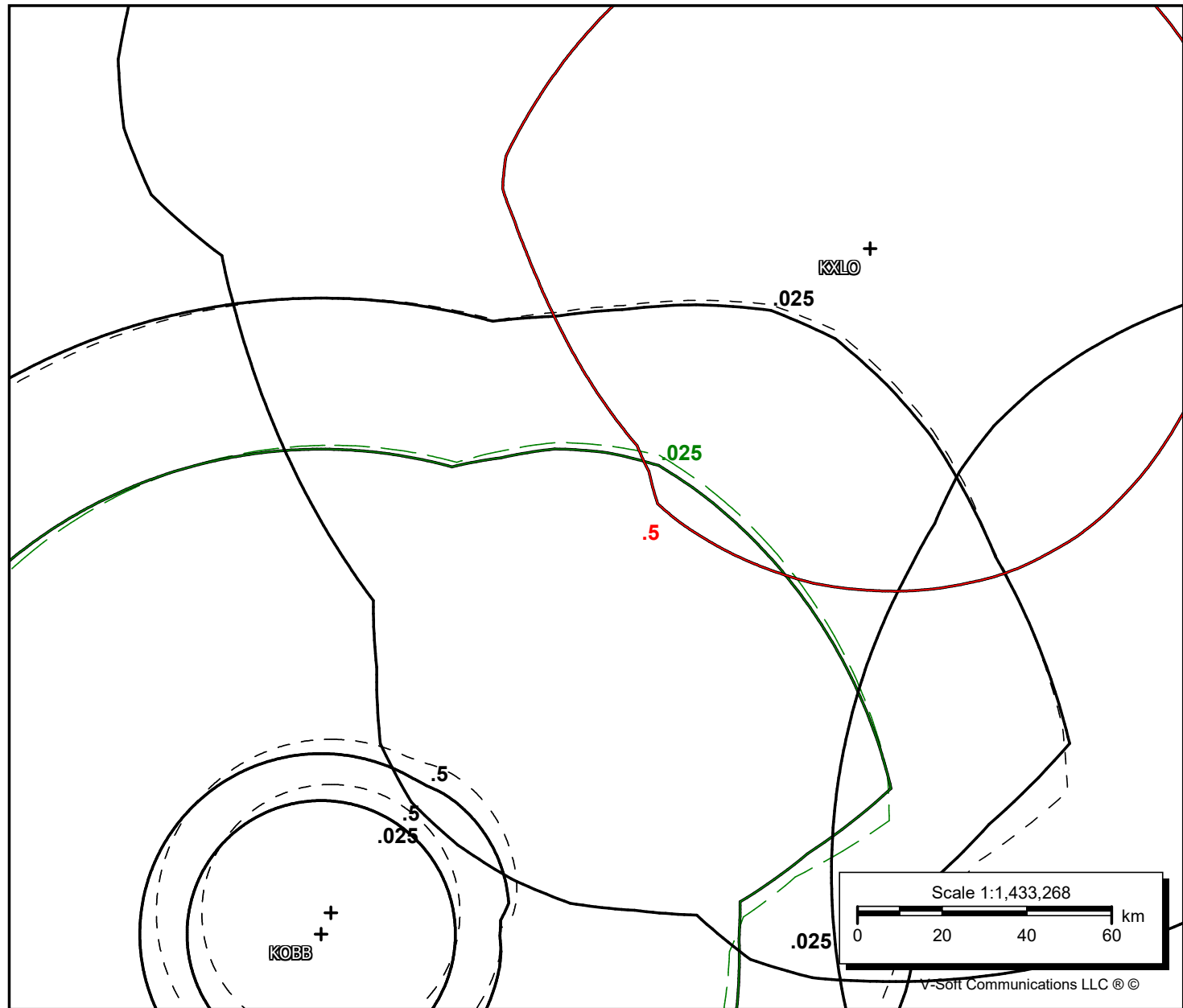
RMS: 317.363 mV/m @1km

Towers: 1

Augs: 0

Daytime
Co-Channel
Allocation Study

Dashed Lines are
Licensed Contours



KOBB

Freq: 1230 kHz

Class: C

Latitude: 45-36-50 N

Longitude: 111-05-05 W

Power: 1 kW

RMS: 317.363 mV/m @1km

Towers: 1

Aucs: 0

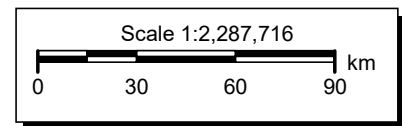
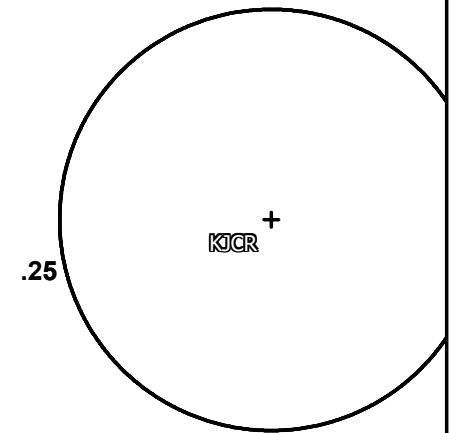
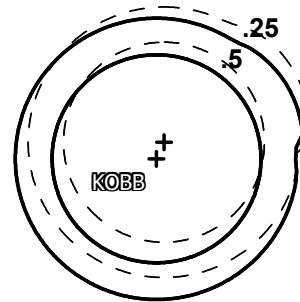
Daytime

1st-adjacent channel

Allocation Study

Dashed Lines are

Licensed Contours



V-Soft Communications LLC ©

Site to Site RSS Calculations

Protected Station: 1230CKKY/ , 1230 kHz - Wainwright, AB, CA
 Coordinates: 52-49-17 N, 110-50-56 W
 Standard: Canadian (Figure 4) [10%]

Current:

Call	Freq (kHz)	Limit (mV/m)	(%)
1230CANMOR/1230		7.954	100.0
1230CJOK/ 1230		7.426	93.3
1230CIYR/ 1230		7.013	64.4
-----	50%	-----	
KXLO 1230		6.203	47.9
KLCB 1230		5.784	40.2
CJNL/ 1230		5.460	35.2
*KOB 1230		4.897	29.8
KHDN 1230		4.773	27.8
KOZI 1230		4.636	26.0
KDIX 1230		4.630	25.2
-----	25%	-----	
KSBN 1230		4.372	23.0
KWYZ 1230		4.108	21.1
KRXK 1230		3.839	19.3
KORT 1230		3.799	18.7
KDYM 1230		3.155	15.3
KVOC 1230		2.837	13.6
KTRF 1230		2.814	13.3
KRYN 1230		2.812	13.2
1230CKTK/ 1230		2.751	12.8
KBAR 1230		2.728	12.6
KKOR 1230		2.555	11.7
KZHC 1230		2.506	11.4
KCUP 1230		2.255	10.2

Proposed:

Call	Freq (kHz)	Limit (mV/m)	(%)
1230CANMOR/1230		7.954	100.0
1230CJOK/ 1230		7.426	93.3
1230CIYR/ 1230		7.013	64.4
-----	50%	-----	
KXLO 1230		6.203	47.9
KLCB 1230		5.784	40.2
CJNL/ 1230		5.460	35.2
*KOB-PRO 1230		5.285	32.2
KHDN 1230		4.773	27.6
KOZI 1230		4.636	25.9
KDIX 1230		4.630	25.0
-----	25%	-----	
KSBN 1230		4.372	22.9
KWYZ 1230		4.108	21.0
KRXK 1230		3.839	19.2
KORT 1230		3.799	18.6
KDYM 1230		3.155	15.2
KVOC 1230		2.837	13.5
KTRF 1230		2.814	13.3
KRYN 1230		2.812	13.1
1230CKTK/ 1230		2.751	12.7
KBAR 1230		2.728	12.5
KKOR 1230		2.555	11.7
KZHC 1230		2.506	11.3
KCUP 1230		2.255	10.1

Protected Station: 1230CANMOR/ , 1230 kHz - Canmore, AB, CA
 Coordinates: 51-04-41 N, 115-21-02 W
 Standard: Canadian (Figure 4) [10%]

Current:

Call	Freq (kHz)	Limit (mV/m)	(%)
1230CIYR/	1230	8.271	100.0
KLCB	1230	7.699	93.0
CJNL/	1230	7.672	67.8
1230CKKY/	1230	7.591	55.5
-----	50%	-----	
KOZI	1230	6.826	43.6
KWYZ	1230	6.465	37.9
KXLO	1230	6.356	34.8
KSBN	1230	6.016	31.1
1230CJOK/	1230	5.965	29.4
*KOBB	1230	5.655	26.8
-----	25%	-----	
KORT	1230	5.223	23.9
KRYN	1230	4.848	21.5
KRXK	1230	4.828	21.0
KDYM	1230	4.786	20.3
KHDN	1230	4.765	19.8
KKOR	1230	4.493	18.3
KZHC	1230	4.120	16.5
KCUP	1230	4.099	16.2
1230CKTK/	1230	3.974	15.5
KBAR	1230	3.810	14.7
KDIX	1230	3.682	14.1
KHSN	1230	3.416	12.9
KSJK	1230	3.406	12.8
KVOC	1230	2.921	10.9
KJJC	1230	2.757	10.2

Proposed:

Call	Freq (kHz)	Limit (mV/m)	(%)
1230CIYR/	1230	8.271	100.0
KLCB	1230	7.699	93.0
CJNL/	1230	7.672	67.8
1230CKKY/	1230	7.591	55.5
-----	50%	-----	
KOZI	1230	6.826	43.6
KWYZ	1230	6.465	37.9
KXLO	1230	6.356	34.8
*KOBB-PRO	1230	6.099	31.5
KSBN	1230	6.016	29.7
1230CJOK/	1230	5.965	28.2
-----	25%	-----	
KORT	1230	5.223	23.7
KRYN	1230	4.848	21.4
KRXK	1230	4.828	20.9
KDYM	1230	4.786	20.2
KHDN	1230	4.765	19.8
KKOR	1230	4.493	18.3
KZHC	1230	4.120	16.5
KCUP	1230	4.099	16.2
1230CKTK/	1230	3.974	15.5
KBAR	1230	3.810	14.7
KDIX	1230	3.682	14.0
KHSN	1230	3.416	12.9
KSJK	1230	3.406	12.7
KVOC	1230	2.921	10.8
KJJC	1230	2.757	10.1

Protected Station: CBPD-1/ , 1230 kHz - Glacier Park, BC, CA
 Coordinates: 51-18-00 N, 117-30-04 W
 Standard: Canadian (Figure 4) [10%]

Current:

Call	Freq (kHz)	Limit (mV/m)	(%)
1230CANMOR/1230		9.723	100.0
1230CIYR/ 1230	1230	8.934	91.8
CJNL/ 1230	1230	8.671	65.6
----- 50% -----			
KOZI 1230	1230	7.286	46.1
KLCB 1230	1230	7.258	41.7
KWYZ 1230	1230	7.035	37.3
1230CKKY/ 1230	1230	6.722	33.4
KSBN 1230	1230	6.037	28.4
1230CJOK/ 1230	1230	5.666	25.6
----- 25% -----			
KXLO 1230	1230	5.495	24.1
KRYN 1230	1230	5.295	22.6
KORT 1230	1230	5.086	21.1
KKOR 1230	1230	5.046	20.5
*KOB 1230	1230	4.961	19.7
KDYM 1230	1230	4.944	19.3
1230CKTK/ 1230	1230	4.889	18.7
KCUP 1230	1230	4.609	17.4
KRXK 1230	1230	4.256	15.8
KZHC 1230	1230	4.198	15.4
KHDN 1230	1230	3.949	14.3
KHSN 1230	1230	3.805	13.6
KSJK 1230	1230	3.697	13.1
KBAR 1230	1230	3.493	12.3
KDIX 1230	1230	2.884	10.1

Proposed:

Call	Freq (kHz)	Limit (mV/m)	(%)
1230CANMOR/1230		9.723	100.0
1230CIYR/ 1230	1230	8.934	91.8
CJNL/ 1230	1230	8.671	65.6
----- 50% -----			
KOZI 1230	1230	7.286	46.1
KLCB 1230	1230	7.258	41.7
KWYZ 1230	1230	7.035	37.3
1230CKKY/ 1230	1230	6.722	33.4
KSBN 1230	1230	6.037	28.4
1230CJOK/ 1230	1230	5.666	25.6
----- 25% -----			
KXLO 1230	1230	5.495	24.1
*KOB 1230	1230	5.365	22.9
KRYN 1230	1230	5.295	22.0
KORT 1230	1230	5.086	20.6
KKOR 1230	1230	5.046	20.0
KDYM 1230	1230	4.944	19.2
1230CKTK/ 1230	1230	4.889	18.7
KCUP 1230	1230	4.609	17.3
KRXK 1230	1230	4.256	15.7
KZHC 1230	1230	4.198	15.3
KHDN 1230	1230	3.949	14.3
KHSN 1230	1230	3.805	13.6
KSJK 1230	1230	3.697	13.1
KBAR 1230	1230	3.493	12.3
KDIX 1230	1230	2.884	10.0

Protected Station: CJNL/ , 1230 kHz - Merritt, BC, CA
 Coordinates: 50-06-29 N, 120-46-10 W
 Standard: Canadian (Figure 4) [10%]

Current:

Call	Freq (kHz)	Limit (mV/m)	(%)
KWYZ	1230	8.714	100.0
KOZI	1230	8.679	99.5
1230CANMOR/	1230	7.713	62.7
----- 50% -----			
1230CIYR/	1230	7.205	49.6
KLCB	1230	6.751	41.6
KRYN	1230	6.538	37.2
KKOR	1230	6.405	34.1
KSBN	1230	6.265	31.6
KCUP	1230	6.107	29.4
1230CKTK/	1230	5.672	26.2
----- 25% -----			
KDYM	1230	5.399	24.1
KHSN	1230	5.212	22.6
KORT	1230	5.209	22.0
1230CKKY/	1230	5.143	21.2
KSJK	1230	4.944	20.0
KZHC	1230	4.941	19.6
KXLO	1230	4.536	17.6
*KOB	1230	4.422	16.9
1230CJOK/	1230	4.097	15.4
KRXK	1230	4.003	14.9
KBAR	1230	3.590	13.2
KDAC	1230	3.328	12.1
KHDN	1230	3.201	11.6
KLXR	1230	3.017	10.8
KZTQ	1230	2.980	10.6
1230CFBV/	1230	2.846	10.1

Proposed:

Call	Freq (kHz)	Limit (mV/m)	(%)
KWYZ	1230	8.714	100.0
KOZI	1230	8.679	99.5
1230CANMOR/	1230	7.713	62.7
----- 50% -----			
1230CIYR/	1230	7.205	49.6
KLCB	1230	6.751	41.6
KRYN	1230	6.538	37.2
KKOR	1230	6.405	34.1
KSBN	1230	6.265	31.6
KCUP	1230	6.107	29.4
1230CKTK/	1230	5.672	26.2
----- 25% -----			
KDYM	1230	5.399	24.1
KHSN	1230	5.212	22.6
KORT	1230	5.209	22.0
1230CKKY/	1230	5.143	21.2
KSJK	1230	4.944	20.0
KZHC	1230	4.941	19.6
*KOB-PRO	1230	4.802	18.6
KXLO	1230	4.536	17.3
1230CJOK/	1230	4.097	15.4
KRXK	1230	4.003	14.9
KBAR	1230	3.590	13.2
KDAC	1230	3.328	12.1
KHDN	1230	3.201	11.6
KLXR	1230	3.017	10.8
KZTQ	1230	2.980	10.6
1230CFBV/	1230	2.846	10.1

Protected Station: 1230CBPB-2/ , 1230 kHz - Jasper Park, AB, CA
 Coordinates: 52-38-05 N, 117-51-59 W
 Standard: Canadian (Figure 4) [10%]

Current:

Call	Freq (kHz)	Limit (mV/m)	(%)
1230CANMOR/1230		8.868	100.0
CJNL/ 1230	1230	8.044	90.6
1230CKKY/ 1230	1230	6.798	56.7
----- 50% -----			
KWYZ 1230	1230	6.460	46.9
KOZI 1230	1230	6.456	42.4
1230CJOK/ 1230	1230	6.329	38.3
KLCB 1230	1230	6.279	35.4
1230CKTK/ 1230	1230	5.394	28.7
KSBN 1230	1230	5.274	26.9
----- 25% -----			
KXLO 1230	1230	4.777	23.6
KRYN 1230	1230	4.562	21.9
KKOR 1230	1230	4.441	20.8
KDYM 1230	1230	4.413	20.2
KORT 1230	1230	4.299	19.3
*KOB 1230	1230	4.145	18.3
KCUP 1230	1230	3.889	16.9
KRXK 1230	1230	3.422	14.6
KZHC 1230	1230	3.373	14.3
KHDN 1230	1230	3.320	13.9
KHSN 1230	1230	3.165	13.1
KSJK 1230	1230	2.976	12.2
1230CFBV/ 1230	1230	2.906	11.9
KBAR 1230	1230	2.737	11.1
KIFW 1230	1230	2.594	10.4
KDIX 1230	1230	2.524	10.1

Proposed:

Call	Freq (kHz)	Limit (mV/m)	(%)
1230CANMOR/1230		8.868	100.0
CJNL/ 1230	1230	8.044	90.6
1230CKKY/ 1230	1230	6.798	56.7
----- 50% -----			
KWYZ 1230	1230	6.460	46.9
KOZI 1230	1230	6.456	42.4
1230CJOK/ 1230	1230	6.329	38.3
KLCB 1230	1230	6.279	35.4
1230CKTK/ 1230	1230	5.394	28.7
KSBN 1230	1230	5.274	26.9
----- 25% -----			
KXLO 1230	1230	4.777	23.6
KRYN 1230	1230	4.562	21.9
*KOB-PRO 1230	1230	4.490	21.0
KKOR 1230	1230	4.441	20.4
KDYM 1230	1230	4.413	19.8
KORT 1230	1230	4.299	18.9
KCUP 1230	1230	3.889	16.8
KRXK 1230	1230	3.422	14.6
KZHC 1230	1230	3.373	14.2
KHDN 1230	1230	3.320	13.9
KHSN 1230	1230	3.165	13.1
KSJK 1230	1230	2.976	12.2
1230CFBV/ 1230	1230	2.906	11.8
KBAR 1230	1230	2.737	11.1
KIFW 1230	1230	2.594	10.4
KDIX 1230	1230	2.524	10.1

Protected Station: 1230CBPB-1/ , 1230 kHz - Jasper Park, AB, CA
 Coordinates: 52-55-00 N, 118-00-04 W
 Standard: Canadian (Figure 4) [10%]

Current:

Call	Freq (kHz)	Limit (mV/m)	(%)
1230CANMOR/1230		8.668	100.0
CJNL/ 1230	1230	7.894	91.0
1230CKKY/ 1230	1230	6.753	57.6
----- 50% -----			
1230CJOK/ 1230	1230	6.429	47.5
KWYZ 1230	1230	6.330	42.2
KOZI 1230	1230	6.307	38.7
KLCB 1230	1230	6.099	34.9
1230CKTK/ 1230	1230	5.519	29.8
KSBN 1230	1230	5.137	26.6
----- 25% -----			
KXLO 1230	1230	4.583	22.9
KRYN 1230	1230	4.396	21.4
KKOR 1230	1230	4.318	20.6
KDYM 1230	1230	4.264	19.9
KORT 1230	1230	4.126	18.9
*KOB 1230	1230	3.955	17.8
KCUP 1230	1230	3.751	16.6
KRXK 1230	1230	3.257	14.2
KZHC 1230	1230	3.215	13.9
KHDN 1230	1230	3.186	13.6
KHSN 1230	1230	3.030	12.8
1230CFBV/ 1230	1230	2.966	12.5
KSJK 1230	1230	2.843	11.8
KIFW 1230	1230	2.700	11.2
KBAR 1230	1230	2.592	10.7

Proposed:

Call	Freq (kHz)	Limit (mV/m)	(%)
1230CANMOR/1230		8.668	100.0
CJNL/ 1230	1230	7.894	91.0
1230CKKY/ 1230	1230	6.753	57.6
----- 50% -----			
1230CJOK/ 1230	1230	6.429	47.5
KWYZ 1230	1230	6.330	42.2
KOZI 1230	1230	6.307	38.7
KLCB 1230	1230	6.099	34.9
1230CKTK/ 1230	1230	5.519	29.8
KSBN 1230	1230	5.137	26.6
----- 25% -----			
KXLO 1230	1230	4.583	22.9
KRYN 1230	1230	4.396	21.4
KKOR 1230	1230	4.318	20.6
*KOB-PRO 1230	1230	4.285	20.0
KDYM 1230	1230	4.264	19.5
KORT 1230	1230	4.126	18.5
KCUP 1230	1230	3.751	16.5
KRXK 1230	1230	3.257	14.2
KZHC 1230	1230	3.215	13.8
KHDN 1230	1230	3.186	13.6
KHSN 1230	1230	3.030	12.8
1230CFBV/ 1230	1230	2.966	12.4
KSJK 1230	1230	2.843	11.8
KIFW 1230	1230	2.700	11.1
KBAR 1230	1230	2.592	10.6

Protected Station: 1230CBPB/ , 1230 kHz - Jasper Park, AB, CA
 Coordinates: 52-13-00 N, 117-13-04 W
 Standard: Canadian (Figure 4) [10%]

Current:

Call	Freq (kHz)	Limit (mV/m)	(%)
1230CIYR/	1230	10.557	100.0
1230CANMOR/	1230	9.526	90.2
CJNL/	1230	8.081	56.8
-----	50%	-----	
1230CKKY/	1230	7.046	43.0
KLCB	1230	6.626	37.2
KOZI	1230	6.625	34.8
KWYZ	1230	6.526	32.4
1230CJOK/	1230	6.273	29.6
-----	25%	-----	
KSBN	1230	5.495	24.9
KXLO	1230	5.171	22.7
1230CKTK/	1230	5.021	21.5
KRYN	1230	4.695	19.6
KORT	1230	4.607	18.9
KDYM	1230	4.565	18.4
*KOB	1230	4.555	18.1
KKOR	1230	4.505	17.6
KCUP	1230	3.993	15.3
KRXK	1230	3.759	14.3
KHDN	1230	3.662	13.7
KZHC	1230	3.590	13.4
KHSN	1230	3.279	12.1
KSJK	1230	3.115	11.4
KBAR	1230	3.028	11.0
KDIX	1230	2.794	10.1

Proposed:

Call	Freq (kHz)	Limit (mV/m)	(%)
1230CIYR/	1230	10.557	100.0
1230CANMOR/	1230	9.526	90.2
CJNL/	1230	8.081	56.8
-----	50%	-----	
1230CKKY/	1230	7.046	43.0
KLCB	1230	6.626	37.2
KOZI	1230	6.625	34.8
KWYZ	1230	6.526	32.4
1230CJOK/	1230	6.273	29.6
-----	25%	-----	
KSBN	1230	5.495	24.9
KXLO	1230	5.171	22.7
1230CKTK/	1230	5.021	21.5
*KOB-PRO	1230	4.929	20.6
KRYN	1230	4.695	19.2
KORT	1230	4.607	18.5
KDYM	1230	4.565	18.0
KKOR	1230	4.505	17.5
KCUP	1230	3.993	15.3
KRXK	1230	3.759	14.2
KHDN	1230	3.662	13.7
KZHC	1230	3.590	13.3
KHSN	1230	3.279	12.1
KSJK	1230	3.115	11.4
KBAR	1230	3.028	11.0
KDIX	1230	2.794	10.1

Protected Station: 1230CIYR/ , 1230 kHz - Hinton, AB, CA
 Coordinates: 53-24-10 N, 117-33-57 W
 Standard: Canadian (Figure 4) [10%]

Current:

Call	Freq (kHz)	Limit (mV/m)	(%)
1230CANMOR/1230		8.451	100.0
CJNL/ 1230	1230	7.450	88.1
1230CKKY/ 1230	1230	6.919	61.4
1230CJOK/ 1230	1230	6.755	51.0
----- 50% -----			
KOZI 1230	1230	5.967	40.1
KWYZ 1230	1230	5.962	37.2
KLCB 1230	1230	5.872	34.3
1230CKTK/ 1230	1230	5.396	29.8
KSBN 1230	1230	4.898	25.9
----- 25% -----			
KXLO 1230	1230	4.462	22.9
KRYN 1230	1230	4.010	20.0
KDYM 1230	1230	3.981	19.5
KKOR 1230	1230	3.941	18.9
KORT 1230	1230	3.891	18.4
*KOB 1230	1230	3.781	17.5
KCUP 1230	1230	3.417	15.6
KHDN 1230	1230	3.092	14.0
KRXK 1230	1230	3.049	13.6
KZHC 1230	1230	2.955	13.1
1230CFBV/ 1230	1230	2.941	12.9
KHSN 1230	1230	2.735	11.9
KIFW 1230	1230	2.701	11.7
KSJK 1230	1230	2.555	11.0
KDIX 1230	1230	2.434	10.4
KBAR 1230	1230	2.404	10.2

Proposed:

Call	Freq (kHz)	Limit (mV/m)	(%)
1230CANMOR/1230		8.451	100.0
CJNL/ 1230	1230	7.450	88.1
1230CKKY/ 1230	1230	6.919	61.4
1230CJOK/ 1230	1230	6.755	51.0
----- 50% -----			
KOZI 1230	1230	5.967	40.1
KWYZ 1230	1230	5.962	37.2
KLCB 1230	1230	5.872	34.3
1230CKTK/ 1230	1230	5.396	29.8
KSBN 1230	1230	4.898	25.9
----- 25% -----			
KXLO 1230	1230	4.462	22.9
*KOB-PRO 1230	1230	4.096	20.5
KRYN 1230	1230	4.010	19.6
KDYM 1230	1230	3.981	19.1
KKOR 1230	1230	3.941	18.6
KORT 1230	1230	3.891	18.0
KCUP 1230	1230	3.417	15.6
KHDN 1230	1230	3.092	13.9
KRXK 1230	1230	3.049	13.6
KZHC 1230	1230	2.955	13.0
1230CFBV/ 1230	1230	2.941	12.9
KHSN 1230	1230	2.735	11.9
KIFW 1230	1230	2.701	11.6
KSJK 1230	1230	2.555	10.9
KDIX 1230	1230	2.434	10.3
KBAR 1230	1230	2.404	10.2

Protected Station: 1230CJOK/ , 1230 kHz - Fort McMurray, AB, CA
 Coordinates: 56-41-16 N, 111-19-59 W
 Standard: Canadian (Figure 4) [10%]

Current:

Call	Freq (kHz)	Limit (mV/m)	(%)
1230CKKY/	1230	7.081	100.0
1230CIYR/	1230	6.482	91.5
1230CANMOR/	1230	5.996	62.4
-----	50%	-----	-----
CJNL/	1230	4.096	36.1
KLCB	1230	3.619	30.0
KXLO	1230	3.462	27.5
-----	25%	-----	-----
1230CKTK/	1230	3.021	23.1
KOZI	1230	2.935	21.9
KWYZ	1230	2.746	20.0
KSBN	1230	2.675	19.1
KDIX	1230	2.608	18.3
*KOB	1230	2.529	17.4
KHDN	1230	2.463	16.7
KORT	1230	2.054	13.7
KDYM	1230	1.876	12.4
KTRF	1230	1.850	12.2
KRXK	1230	1.833	12.0
1230CFBV/	1230	1.798	11.7
CHFC/	1230	1.706	11.0
KIFW	1230	1.689	10.8
KRYN	1230	1.655	10.5
KKOR	1230	1.596	10.1

Proposed:

Call	Freq (kHz)	Limit (mV/m)	(%)
1230CKKY/	1230	7.081	100.0
1230CIYR/	1230	6.482	91.5
1230CANMOR/	1230	5.996	62.4
-----	50%	-----	-----
CJNL/	1230	4.096	36.1
KLCB	1230	3.619	30.0
KXLO	1230	3.462	27.5
-----	25%	-----	-----
1230CKTK/	1230	3.021	23.1
KOZI	1230	2.935	21.9
KWYZ	1230	2.746	20.0
*KOB-PRO	1230	2.737	19.5
KSBN	1230	2.675	18.7
KDIX	1230	2.608	17.9
KHDN	1230	2.463	16.7
KORT	1230	2.054	13.7
KDYM	1230	1.876	12.4
KTRF	1230	1.850	12.1
KRXK	1230	1.833	11.9
1230CFBV/	1230	1.798	11.6
CHFC/	1230	1.706	10.9
KIFW	1230	1.689	10.8
KRYN	1230	1.655	10.5
KKOR	1230	1.596	10.1

Protected Station: 1230CFXG/ , 1230 kHz - Grande Cache, AB, CA
 Coordinates: 53-53-21 N, 119-07-30 W
 Standard: Canadian (Figure 4) [10%]

Current:

Call	Freq (kHz)	Limit (mV/m)	(%)
1230CIYR/	1230	11.035	100.0
1230CANMOR/	1230	7.661	69.4
CJNL/	1230	7.393	55.0
-----	50%	-----	-----
1230CJOK/	1230	6.511	42.4
1230CKKY/	1230	6.271	37.6
1230CKTK/	1230	6.094	34.2
KWYZ	1230	5.925	31.4
KOZI	1230	5.768	29.2
KLCB	1230	5.423	26.3
-----	25%	-----	-----
KSBN	1230	4.585	21.5
KKOR	1230	3.938	18.1
KRYN	1230	3.910	17.6
KDYM	1230	3.825	17.0
KXLO	1230	3.770	16.5
KORT	1230	3.503	15.1
KCUP	1230	3.382	14.4
KIFW	1230	3.287	13.9
1230CFBV/	1230	3.263	13.7
*KOB	1230	3.236	13.4
KZHC	1230	2.705	11.1
KHSN	1230	2.691	11.0
KRXK	1230	2.601	10.5
KHDN	1230	2.554	10.3

Proposed:

Call	Freq (kHz)	Limit (mV/m)	(%)
1230CIYR/	1230	11.035	100.0
1230CANMOR/	1230	7.661	69.4
CJNL/	1230	7.393	55.0
-----	50%	-----	-----
1230CJOK/	1230	6.511	42.4
1230CKKY/	1230	6.271	37.6
1230CKTK/	1230	6.094	34.2
KWYZ	1230	5.925	31.4
KOZI	1230	5.768	29.2
KLCB	1230	5.423	26.3
-----	25%	-----	-----
KSBN	1230	4.585	21.5
KKOR	1230	3.938	18.1
KRYN	1230	3.910	17.6
KDYM	1230	3.825	17.0
KXLO	1230	3.770	16.5
*KOB-PRO	1230	3.510	15.2
KORT	1230	3.503	15.0
KCUP	1230	3.382	14.3
KIFW	1230	3.287	13.7
1230CFBV/	1230	3.263	13.5
KZHC	1230	2.705	11.1
KHSN	1230	2.691	11.0
KRXK	1230	2.601	10.5
KHDN	1230	2.554	10.3

Statement of Engineer

This Engineering Report, relative to a change in facilities for KOB(AM) has been prepared by the undersigned. All representations contained herein are true to the best of my knowledge. I am an experienced radio engineer whose qualifications are a matter of record with the Federal Communications Commission. I am an engineer in the firm of Hatfield and Dawson Consulting Engineers and am Registered as a Professional Engineer in the States of Washington and Oregon.

Signed this 18th day of April, 2022



Thomas S. Gorton, P.E.

READ INSTRUCTIONS CAREFULLY
BEFORE PROCEEDING

FEDERAL COMMUNICATIONS COMMISSION
REMITTANCE ADVICE

Approved by OMB
3060-0589
Page No 1 of 1

(1) LOCKBOX # 979089		SPECIAL USE ONLY	
		FCC USE ONLY	
SECTION A – PAYER INFORMATION			
(2) PAYER NAME (if paying by credit card enter name exactly as it appears on the card) Desert Mountain Broadcasting LLC		(3) TOTAL AMOUNT PAID (U.S. Dollars and cents) 3,250.00	
(4) STREET ADDRESS LINE NO. 1 3981 Woodcreek Drive			
(5) STREET ADDRESS LINE NO. 2			
(6) CITY Billings		(7) STATE MT	(8) ZIP CODE 59106
(9) DAYTIME TELEPHONE NUMBER (include area code) 4066719344		(10) COUNTRY CODE (if not in U.S.A.) US	
FCC REGISTRATION NUMBER (FRN) REQUIRED			
(11) PAYER (FRN) 0028314961		(12) FCC USE ONLY	
IF MORE THAN ONE APPLICANT, USE CONTINUATION SHEETS (FORM 159-C) COMPLETE SECTION BELOW FOR EACH SERVICE, IF MORE BOXES ARE NEEDED, USE CONTINUATION SHEET			
(13) APPLICANT NAME Desert Mountain Broadcasting Licenses LLC			
(14) STREET ADDRESS LINE NO. 1 3981 Woodcreek Drive			
(15) STREET ADDRESS LINE NO. 2			
(16) CITY Billings		(17) STATE MT	(18) ZIP CODE 59106
(19) DAYTIME TELEPHONE NUMBER (include area code) 4066719344		(20) COUNTRY CODE (if not in U.S.A.) US	
FCC REGISTRATION NUMBER (FRN) REQUIRED			
(21) APPLICANT (FRN) 0028315117		(22) FCC USE ONLY	
COMPLETE SECTION C FOR EACH SERVICE, IF MORE BOXES ARE NEEDED, USE CONTINUATION SHEET			
(23A) CALL SIGN/OTHER ID KOBB	(24A) PAYMENT TYPE CODE MVU		(25A) QUANTITY 1
(26A) FEE DUE FOR (PTC) 1,625.00	(27A) TOTAL FEE 1,625.00		FCC USE ONLY
(28A) FCC CODE 1 55677		(29A) FCC CODE 2 55677	
(23B) CALL SIGN/OTHER ID KYWL	(24B) PAYMENT TYPE CODE MVU		(25B) QUANTITY 1
(26B) FEE DUE FOR (PTC) 1,625.00	(27B) TOTAL FEE 1,625.00		FCC USE ONLY
(28B) FCC CODE 1 161553		(29B) FCC CODE 2 161553	
SECTION D – CERTIFICATION			
CERTIFICATION STATEMENT I, _____, certify under penalty of perjury that the foregoing and supporting information is true and correct to the best of my knowledge, information and belief. SIGNATURE _____ DATE _____			
SECTION E - CREDIT CARD PAYMENT INFORMATION			
MASTERCARD _____ VISA _____ AMEX _____ DISCOVER _____			
ACCOUNT NUMBER _____ EXPIRATION DATE _____			
I hereby authorize the FCC to charge my credit card for the service(s)/authorization herein described.			
SIGNATURE _____ DATE _____			

ADVICE REFERENCE GUIDE

HOW TO USE FCC FORM 159-REMITTANCE ADVICE

The FCC Form 159, "Remittance Advice," and FCC Form 159-C, (Continuation Sheet) is a multi-purpose form that must accompany any payment to the Federal Communications Commission (e.g., Regulatory Fees, Processing Fees, Auctions, Fines, Forfeitures, Freedom of Information Act (FOIA) Billings, or any other debt due to the FCC). The information on this form is collected to ensure credit for full payment, to ensure you receive any refunds due, to service public inquiries, and to comply with the Debt Collection Improvement Act of 1996.

Note: Fee Filing Guides can be obtained by calling Forms Distribution -- (202) 418-3676 or 1-800-418-3676, or by calling FCC's fax-on-demand -- (202) 418-0177 from the handset of a fax machine.

Instructions for Completing FCC Form 159 & 159-C

NOTE: All required blocks must be completed or it may result in a delay in processing or the return of your application.

(1) **Lockbox No. #** - Enter the appropriate six-digit P.O. Box Number as found in either the FCC Fee Filing Guide for the service requested, or as specified in the Public Notice.

SECTION A

(2) **Payer Name** - Enter the name of the person or company (i.e., maker of the check) making the payment. If using an individual name, enter the last name, first name, and middle initial. If a company, enter the name used commercially. If paying by credit card, enter the name exactly as it appears on your card.

(3) **Total Amount Paid** - Enter the total amount of your remittance.

(4) **Street Address Line 1** - The street address or post office box number to which correspondence should be sent.

(5) **Street Address Line 2** - This line may be used if further identification of the address is required.

(6) **City** - The name of the city associated with the street address given in (4).

(7) **State** - If the payer has a United States mailing address enter the appropriate two-digit state abbreviation as prescribed by the U.S. Post Office. If the payer has a mailing address outside the United States, leave this section blank.

(8) **ZIP Code** - Enter the appropriate five or nine-digit ZIP code prescribed by the U.S. Post Office. If address is foreign, enter the appropriate ZIP (postal) code.

(9) **Daytime Telephone Number** - Enter the payer's ten-digit daytime telephone number, including area code. For foreign telephone numbers include the appropriate country dialing access code, as if you were calling from the United States. This daytime number should be the number where you can be reached during normal business hours.

(10) **Country Code** - This section is for payers who have an address outside the United States of America. Enter the appropriate code here. To obtain country code information, contact the Mailing Requirements Dept. of the U.S. Postal Service.

(11) **Payer (FRN)** - Enter the payer's ten-digit FCC Registration Number (FRN) assigned by the Commission Registration System (CORES). The FRN is a unique entity identifier for everyone doing business with the Commission. The FRN can be obtained electronically through the FCC webpage (www.fcc.gov.com) or by requesting FCC Form 160 through the FCC forms webpage (www.fcc.gov/formpage.html).

(12) **FCC Use Only**

(You must complete Section A - Block 11: FCC Registration Number)

SECTION B

COMPLETE THIS SECTION IF THE PAYER AND APPLICANT ARE DIFFERENT

(13) **Applicant Name** - Enter the name (last, first, middle initial) as it appears on the original application or filing being submitted. **Applicant** includes Licensees, Regulatees or Debtors. If you are using this form to pay for multiple applicants with a single remittance, each applicant must be listed separately using the continuation sheet - Form 159-C. **(If the name is the same as the payer (block 2), it is not necessary to fill out this section. MOVE TO SECTION C.)**

(14) **Street Address Line 1** - The street address or post office box number to which correspondence should be sent.

(15) **Street Address Line 2** - This line may be used if further identification of the address is required.

(16) **City** - The name of the city associated with the street address given in (14).

(17) **State** - If the applicant has a United States mailing address enter the appropriate two-digit state abbreviation as prescribed by the U.S. Post Office. If the applicant has a mailing address outside the United States, leave this section blank.

(18) **ZIP Code** - Enter the appropriate five or nine-digit ZIP code prescribed by the U.S. Post Office. If address is foreign, enter the appropriate ZIP (postal) code.

(19) **Daytime Telephone Number** - Enter the applicant's ten-digit daytime telephone number, including area code. For foreign telephone numbers include the appropriate country dialing access code, as if you were calling from the United States. This daytime number should be the number where you can be reached during normal business hours.

(20) **Country Code** - This section is for applicants who have an address outside the United States of America. Enter the appropriate code here. To obtain country code information, contact the Mailing Requirements Dept. of the U.S. Postal Service.

(21) **Applicant (FRN)**. Enter the applicant's ten-digit number FRN assigned by the Commission Registration System (CORES). The FRN is a unique entity identifier for everyone doing business with the Commission. The FRN can be obtained electronically through the FCC webpage (www.fcc.gov.com) or by requesting FCC Form 160 through the FCC forms webpage (www.fcc.gov/formpage.html).

(22) **FCC Use Only**

(You must complete Section B - Block 21: FCC Registration Number)

SECTION C

(23) **Call Sign/Other ID** - Enter an applicable call sign or unique FCC identifier, if any, as prescribed by the appropriate FCC Fee Filing Guide or Public Notice.

(24) **Payment Type Code** - Enter the appropriate payment type code for the service you are requesting as found in the appropriate FCC Fee Filing Guide or Public Notice.

(Incorrect or omitted payment type codes may result in your application or filing being returned to you without further processing.) You are allowed to file multiple actions on one FCC Form 159. There are three ways "multiple actions" are defined. The following examples provide instructions on how multiple actions should be filed when using FCC Forms 159 & 159-C:

(i) If a single service allows for a quantity of more than one of the same action, as defined in the appropriate FCC Fee Filing Guide or Public Notice, complete Section C (e.g., if you are filing an ownership report in the mass media services you may pay for both your AM & FM stations using the same payment type code and a quantity of two as long as it can be filed in the same lockbox). Blocks **28 & 29** are only to be completed when required by the Bureau/Office or by Public Notice.

(ii) If you are filing concurrent actions (not the same actions) in the same lockbox, on the same application, refer to the appropriate FCC Fee Filing Guide or Public Notice for specific instructions as to the number of quantities allowed. Complete Section C (e.g., you may file a regulatory fee for a CARS license and Broadcast Auxiliary license or you may file a regulatory fee for a mass media service and a common carrier service on the same FCC Form 159 by using the designated payment type codes, and quantities as defined by the Public Notice). Complete a separate item for each action required. Blocks **28 & 29** are only to be completed when required by the Bureau/Office or by Public Notice.

(iii) If a single Remittance Advice is used to pay for more than one applicant, licensee, regulatee or debtor, for permitted action(s) in the same lockbox, then a Continuation Sheet (159-C) must be completed for each applicant, licensee, regulatee or debtor (e.g., if you are paying for different applicants submitting separate Domestic 214 Applications in the common carrier services, they can all be filed on one FCC Form 159 as long as they are filed in the same lockbox). A separate FCC Form 159 must be completed and submitted for each applicant. Blocks **28 & 29** are only to be completed when required by the Bureau/Office or by Public Notice.

Remember, if any of these additional applications fall into category (i) or (ii) above, you can follow those instructions. Make sure to check the appropriate FCC Fee Filing Guide or Public Notice for any special filing stipulations that may apply.

(25) **Quantity** - Enter the total number of actions required with this submission. Refer to the FCC Fee Filing Guide or Public Notice for information concerning multiple requests.

(26) **FEE Due for (PTC)** - Enter the fee due for the PTC listed in item 24.

(27) **Total Fee** - Enter the total fee due by multiplying Block 25 (Quantity) times Block 26 (Fee Due for PTC).

(28) **FCC Code 1** - This section is used for special filing codes as required by the Bureau/Office or Public Notice. Do not complete this block unless instructed to do so.

(29) **FCC Code 2** - This section is used for special filing codes as required by the Bureau/Office or Public Notice. Do not complete this block unless instructed to do so.

SECTION D

(30) **Certification Statement** - This section must be completed and signed. Failure to do so may delay the processing of your application/filing.

SECTION E

(31) **Credit Card Payment Information** - If remitting payment by credit card, place an "x" in the appropriate block for the credit card being used - MasterCard, Visa, AMEX, or Discover. Enter your credit card number and expiration date (For example: (mm/yyyy)). Sign and date the FCC Form 159 to authorize your credit card payment. (If any area required for credit card approval is incomplete, the application will be returned unprocessed.)

Form 159-C FCC Remittance Advice Continuation Sheet

Use this form for any additional services pertaining to this filing or if you are paying for multiple applicants with a single payment. (See Sections B and C of the instructions to assist you in completing this form). For each additional applicant listed in Section BB of the FCC Form 159-C, you must complete Section BB - Block 21: FCC Registration Number. Each additional applicant must use a separate Form 159-C.

Note: Checks must be denominated in U.S. Currency and deposited in an U.S. financial institution. No checks drawn on a foreign bank will be accepted.

NOTICE TO INDIVIDUALS REQUIRED BY THE PRIVACY ACT OF 1974 AND THE PAPERWORK REDUCTION ACT OF 1995

The solicitation of the personal information requested in this form is authorized by the Communications Act, Sections 8 & 9, and the Debt Collection Improvement Act of 1996. P.L. 104-134. This form will be used primarily to capture information to maintain required accounts receivable, and collect fines and debts due the Commission. As part of the Debt Collection Improvement Act, agencies are authorized to refer specific Taxpayers Identification information which includes Employers Identification Numbers and Social Security Numbers to the Department of Treasury for further investigation and possible enforcement of a statute, rule, regulation or order. If we believe there may be a violation or potential violation of a FCC statute, regulation, rule or order, your application may be referred to the Federal, state, or local agency responsible for investigating, prosecuting, enforcing or implementing the statute, rule, regulation or order. In certain cases, the information in your application may be disclosed to the Department of Justice or a court or adjudicative body when (a) the FCC; or (b) any employee of the FCC; or (c) the United States Government, is a party to a proceeding before the body or has an interest in the proceeding. If information requested on the form is not provided, processing of the application/filing may be delayed or returned without action pursuant to Commission rules.

If you owe a past due debt to the Federal Government, the Taxpayer Identification Number (such as your Social Security Number) and other information you provide may also be disclosed to the Department of the Treasury, Financial Management Service, other federal agencies and/or your employer to offset your salary, IRS tax refund or other payments to collect that debt. The FCC may also provide this information to these agencies through the matching of computer records when authorized.

We have estimated that each response to this collection of information will take, on average, 30 minutes. Our estimate includes the time to read the instructions, look through existing records, gather and maintain required data, and actually review and complete the form. If you have any comments on this estimate, or on how we can improve the collection of this data to reduce the burden it causes you, please write the Federal Communication Commission, AMD-PERF, Washington, DC 20554, Paperwork Reduction Project (3060-0589). We will also accept your comments via the Internet if you send them to jboley@fcc.gov. Please **DO NOT SEND COMPLETED APPLICATION FORMS TO THIS ADDRESS**.

Remember -- You are not required to respond to a collection of information sponsored by the Federal government, and the government may not conduct or sponsor this collection, unless it displays a currently valid OMB control number or if we fail to provide you with this notice. This collection has been assigned an OMB control number of 3060-0589.

This notice is required by the Privacy Act of 1974, Public Law 93-579, December 31, 1974, 5 U.S.C. Section 552a(e) (3) and the Paperwork Reduction Act of 1995, Public Law 104-13, October 1, 1995, 44 U.S.C. 3507.

Online Payment Confirmation

Total Amount	\$3,250.00
Payer FRN	0028314961
Payer Name	dteslik@graymillerpersh.com
Remittance ID	3786275
Treasury Tracking ID	26VR09DD

Thank you for your payment!