

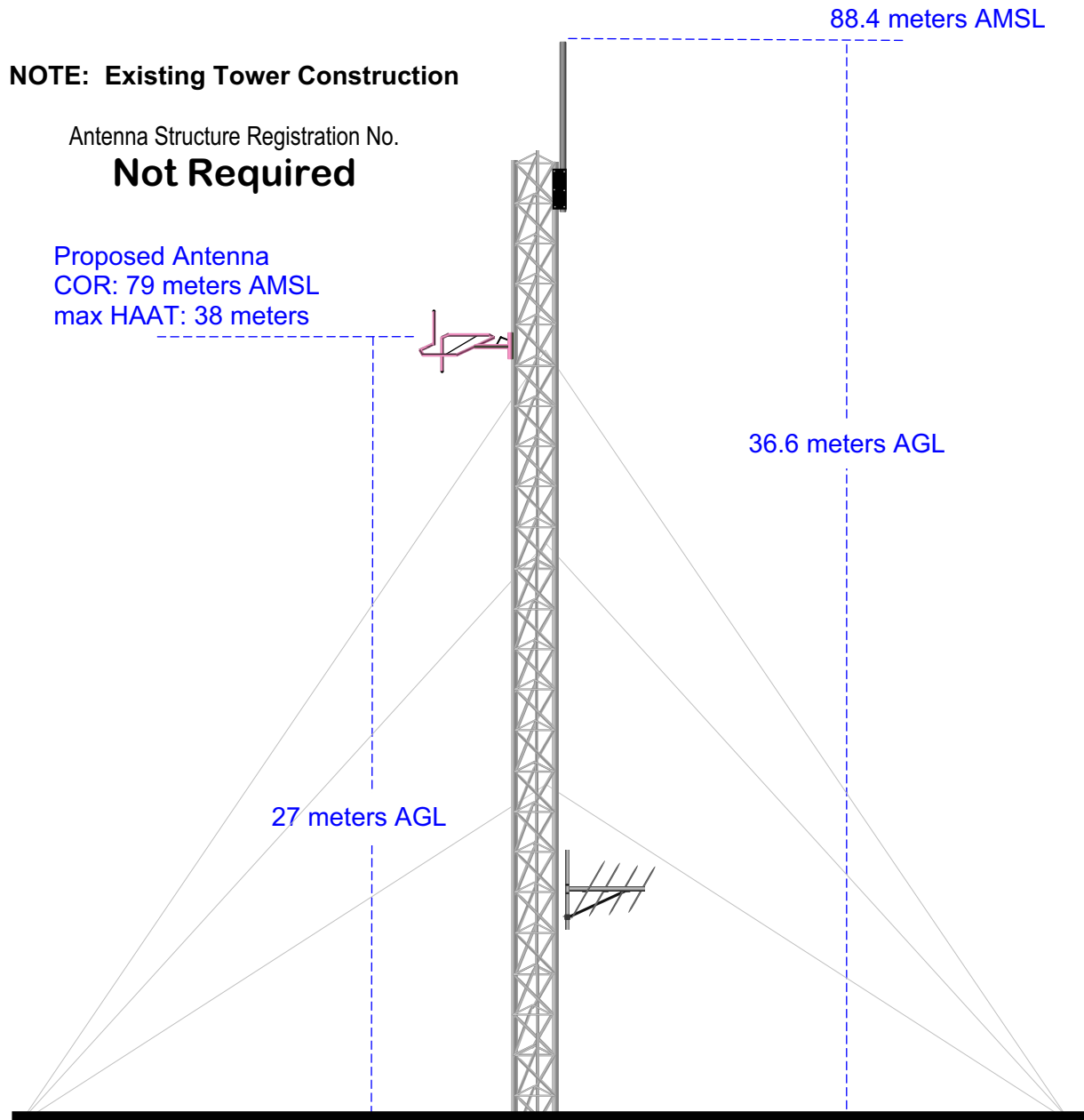
## EXHIBIT 12.2

### VERTICAL PLAN OF ANTENNA SYSTEM

---

The site is located south of the intersection of S. Main St. & Dingle St.  
city of Sumter, Sumter County, South Carolina.

Site Location  
NL: 33° 54' 50"  
WL: 80° 20' 36"



Ground Elevation = 51.8 m AMSL  
Drawing is not to Scale

**MUNN-REESE, INC.**  
Broadcast Engineering Consultants  
Coldwater, MI 49036

**W242AH.P**  
Proposed Operation  
Latitude: 33-54-50 N  
Longitude: 080-20-36 W  
ERP: 0.17 kW  
HAAT: 30.16 m  
Channel: 242  
Frequency: 96.3 MHz  
AMSL Height: 79.0 m  
Horiz. Pattern: Omni  
Vert. Pattern: No  
Prop Model: None

**60 dBu Contour**

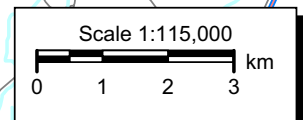
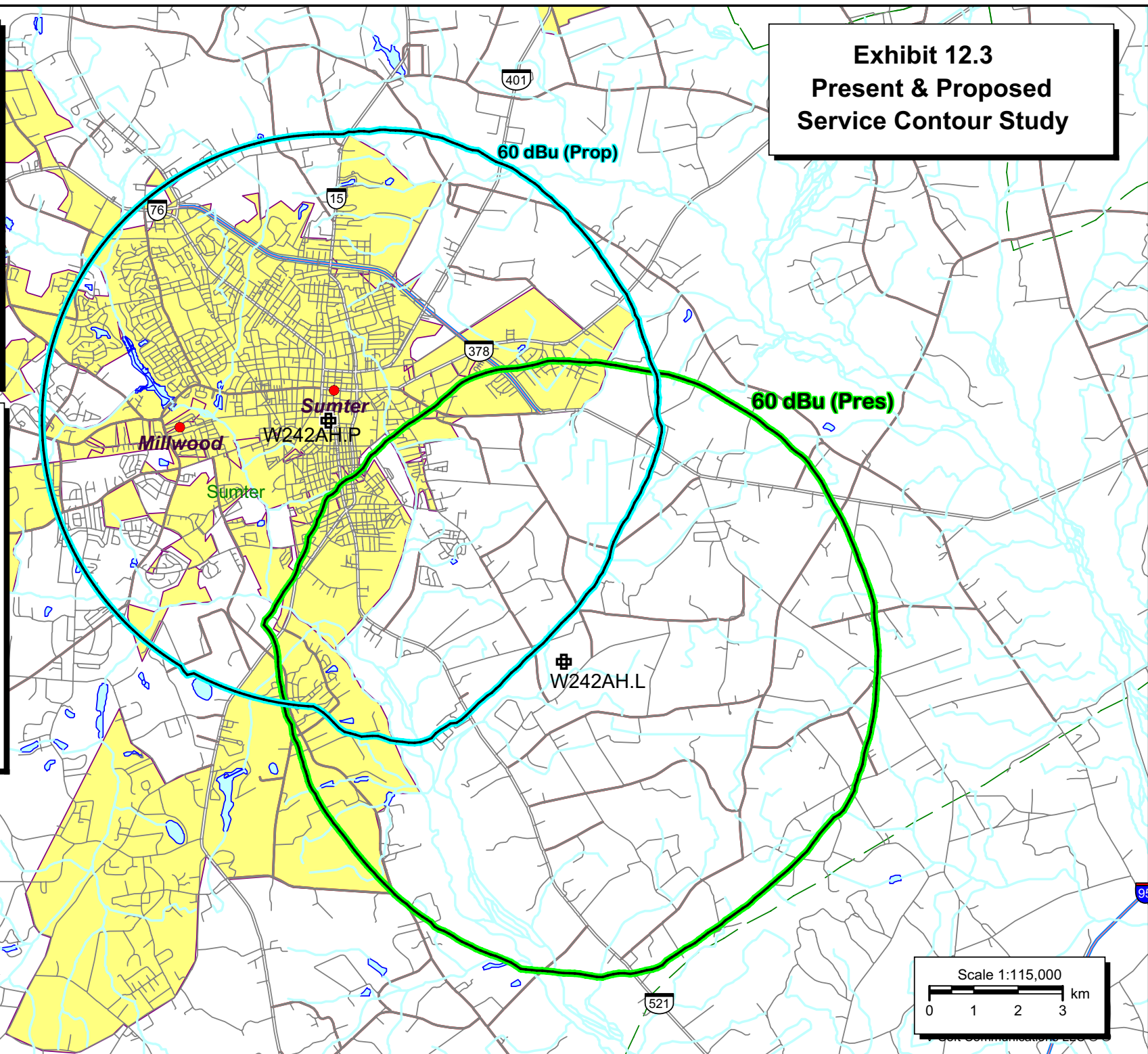
Total Population: 49,612  
Total Area: 144.32 sq. km

**W242AH.L**  
BLFT19970903TB  
Latitude: 33-51-55 N  
Longitude: 080-17-09 W  
ERP: 0.055 kW  
HAAT: 61.0 m  
Channel: 242  
Frequency: 96.3 MHz  
AMSL Height: 101.0 m  
Horiz. Pattern: Omni  
Vert. Pattern: No  
Prop Model: None

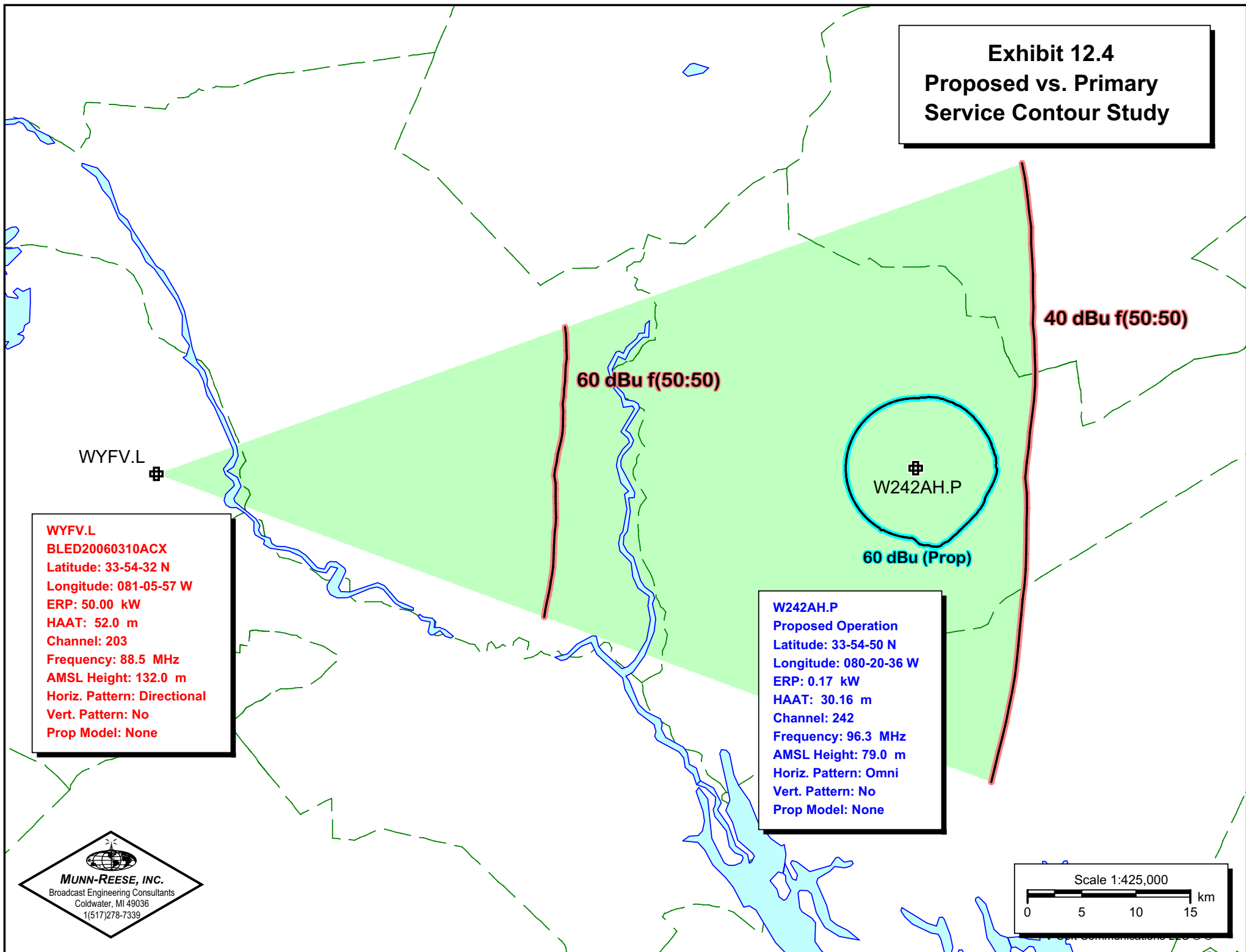
**60 dBu Contour**

Total Population: 10,193  
Total Housing Units: 4,093  
Total Area: 143.14 sq. km

## Exhibit 12.3 Present & Proposed Service Contour Study



**Exhibit 12.4**  
**Proposed vs. Primary**  
**Service Contour Study**



# Exhibit 12.5

## Tabulation of Proposed Allocation

Tabulations of contours will be supplied upon request.

Bible Broadcasting Network, I

REFERENCE		CH# 242D - 96.3 MHz, Pwr= 0.17 kw, HAAT=30.1 M, COR= 79 M								DISPLAY DATES	
33 54 50 N.		Average Protected F(50-50)= 6.44 km								DATA 08-12-06	
80 20 36 W.		Ave. F(50-10) 40 dBu= 21.5 54 dBu= 9.2 80 dBu= 2.1 100 dBu= .9								SEARCH 08-16-06	
CH	CALL	TYPE	AZI.	DIST	LAT.	Pwr(kw)	COR(M)	PRO(km)	*IN*	*OUT*	
CITY		STATE	<--	FILE #	LNG.	HAAT(M)	INT(km)	LICENSEE	(Overlap	in km)	
242D	W242AH	LIC CN	135.5	7.57	33 51 55	0.055	101	6.3	-20.32<	-22.02<	
	Sumter	SC	315.5	BLFT19970903TB	80 17 09	50	20.9	Bible Broadcasting Network			
	Translator for WYFH, North Charleston, SC										
242D	W242AO	LIC C	201.8	51.00	33 29 14	0.027	108	6.6	22.68	22.95	
	Elloree	SC	21.7	BLFT20050621CSE	80 32 54	79	21.9	Roger D. Blume			
242D	AP242	APP DC	53.8	54.64	34 12 12	0.004	150	4.8	32.47	26.23	
	Florence	SC	234.0	BNPFT20030317CDB	79 51 52	105	15.1	Miller Communications, Inc			
242D	AP242	APP V	285.3	60.97	34 03 23	0.010	245	7.0	31.12	32.52	
	Olympia	SC	104.9	BNPFT20030310AWZ	80 58 50	144	23.4	Calvary Chapel of Twin Fal			
241C	WAVF.A	APP DCX	151.3	125.02	32 55 28	100.000	543	88.8	-14.82<	26.00	
	Hanahan	SC	331.7	BPH20040630ABK	79 41 58	535	132.7	Apex Broadcasting, Inc.			
241C	WAVF.A	APP DCX	151.3	125.02	32 55 28	100.000	543	88.8	-14.82<	26.00	
	Hanahan	SC	331.7	BPH20040630ABK	79 41 58	535	132.7	Apex Broadcasting, Inc.			
244C3	WLTY	LIC ZCX	279.5	62.65	34 00 18	9.000	199	32.7	52.99	28.99	
	Cayce	SC	99.1	BLH20050902ABZ	81 00 44	111	3.2	Capstar Tx Limited Partner			
245C	WSUY	LIC DCY	151.3	125.02	32 55 28	100.000	543	88.8	105.00	35.28	
	Charleston	SC	331.7	BLH19860905KA	79 41 58	535	12.9	Citadel Broadcasting Compa			
240D	AP240	APP C	88.0	48.60	33 55 41	0.019	127	6.6	41.05	41.08	
	Lake City	NC	268.3	BNPFT20030313BAN	79 49 05	94	0.3	Educational Media Foundati			
242C2	WKSP	LIC CX	260.6	148.80	33 41 06	17.500	388	49.7	18.93	77.59	
	Aiken	SC	79.7	BLH20020611AAU	81 55 36	223	123.4	Capstar Tx Limited Partner			
239C3	WWBD	LIC NCX	221.0	86.19	33 19 38	11.000	192	38.2	75.95	47.07	
	Bamberg	SC	40.7	BLH20050915ACY	80 57 09	143	3.8	Miller Communications, Inc			
241C1	WAVF	LIC CX	158.7	130.43	32 49 04	100.000	239	67.0	24.29	52.64	
	Hanahan	SC	339.0	BLH20030716ABU	79 50 08	236	98.6	Apex Broadcasting, Inc.			
243D	W243AG	LIC CN	226.1	62.34	33 31 28	0.027	137	6.2	47.10	46.94	
	Orangeburg	SC	45.9	BLFT19960613TD	80 49 42	70	8.8	Bible Broadcasting Network			
	Translator For WYFH, N. Charleston, SC										
243C	WFLB	LIC NCN	50.7	153.28	34 46 50	100.000	368	73.8	39.23	69.45	
	Laurinburg	NC	231.4	BLH19971024KC	79 02 45	319	107.0	Wflb License Limited Partn			
240D	W240AX	LIC CN	285.5	60.68	34 03 27	0.013	177	5.4	53.99	54.41	
	Columbia	SC	105.1	BLFT19960111TT	80 58 37	74	0.3	Bible Broadcasting Network			
	Translator For WYFV, Cayce, SC										
240D	AP240	APP C	53.1	60.75	34 14 27	0.027	113	6.2	53.35	53.66	
	Crestview	SC	233.4	BNPFT20030314BRZ	79 48 55	70	0.4	Educational Media Foundati			
240D	AP240	APP C	279.7	62.67	34 00 23	0.250	104	7.1	55.13	54.67	
	Columbia	SC	99.3	BNPFT20030317AEW	81 00 44	16	1.1	Glory Communications, Inc.			
296D	AP296	APP C	285.3	60.97	34 03 23	0.010	245	7.0	3.0R	58.0M	
	Olympia	SC	104.9	BNPFT20030310ASN	80 58 50	144	7.0	Calvary Chapel Of Twin Fal			

Terrain database is USGS 03 SEC  
 ERP and HAAT are on direct line to and from reference station.  
 "<" = contour overlap