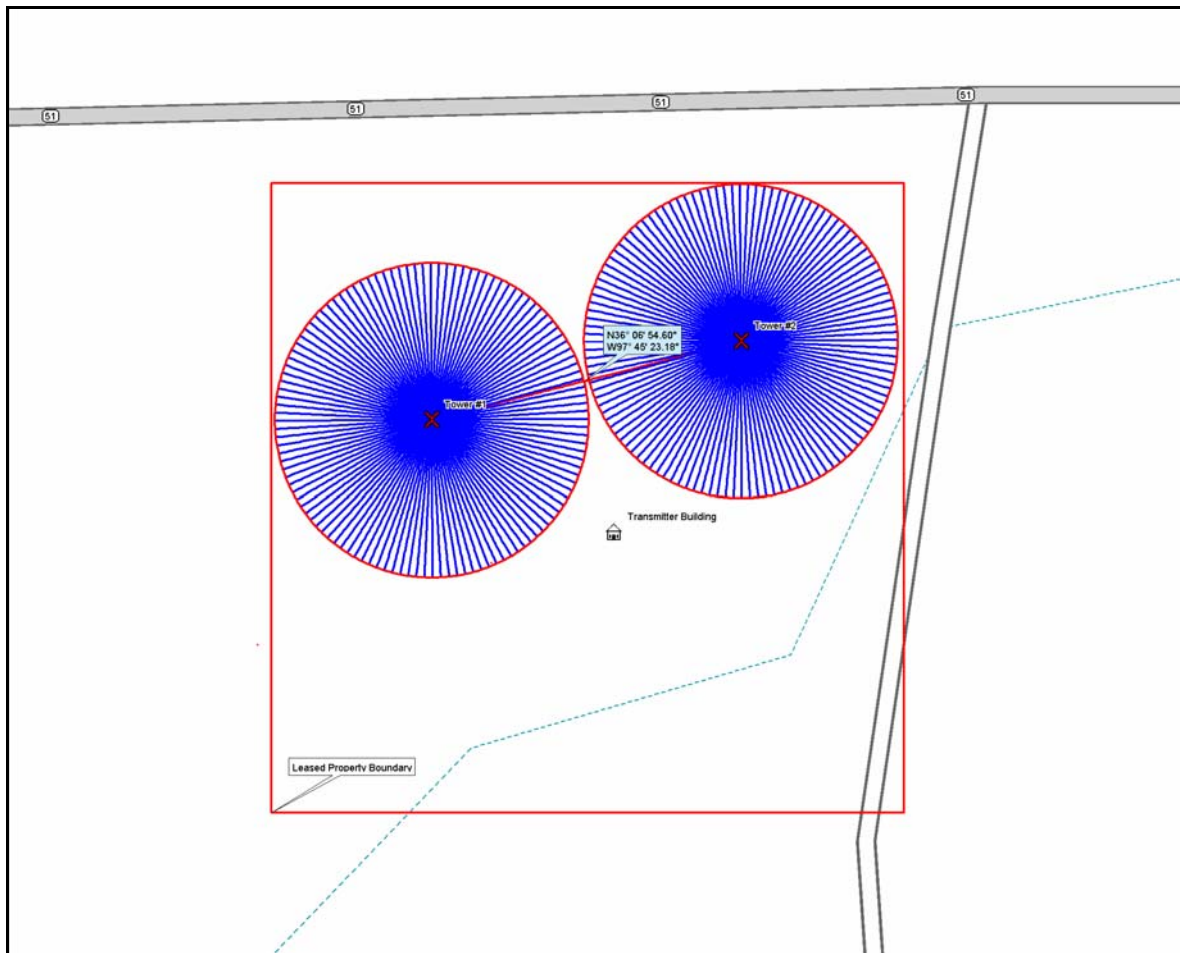




KMKZ Site Platt & Ground System

Section 7, Exhibit 10-E



The proposed towers will be vertically guyed, triangular steel series fed towers. The electrical height of the radiators will be 45.73 meters, or 90.0°. The ground system will consist of 120 buried copper wires, 45.73 meters or 90.0° in length. The ground wires will be spaced every three degrees around the base of each tower base. The theoretical efficiency of the antenna system will be 903.78 mV/m at 1 km. This value was calculated using the William Ball, Figure 8, §73.190 program from the Commission's Rules.