

Affidavit Certification and Qualifications of Supervising Engineer

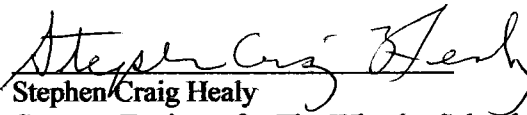
In support of FCC form 302-FM
FCC File Number BMPED-20090824ASY
Facility ID# 66656
WELH, FM 88.1 Providence, RI

I hereby declare:

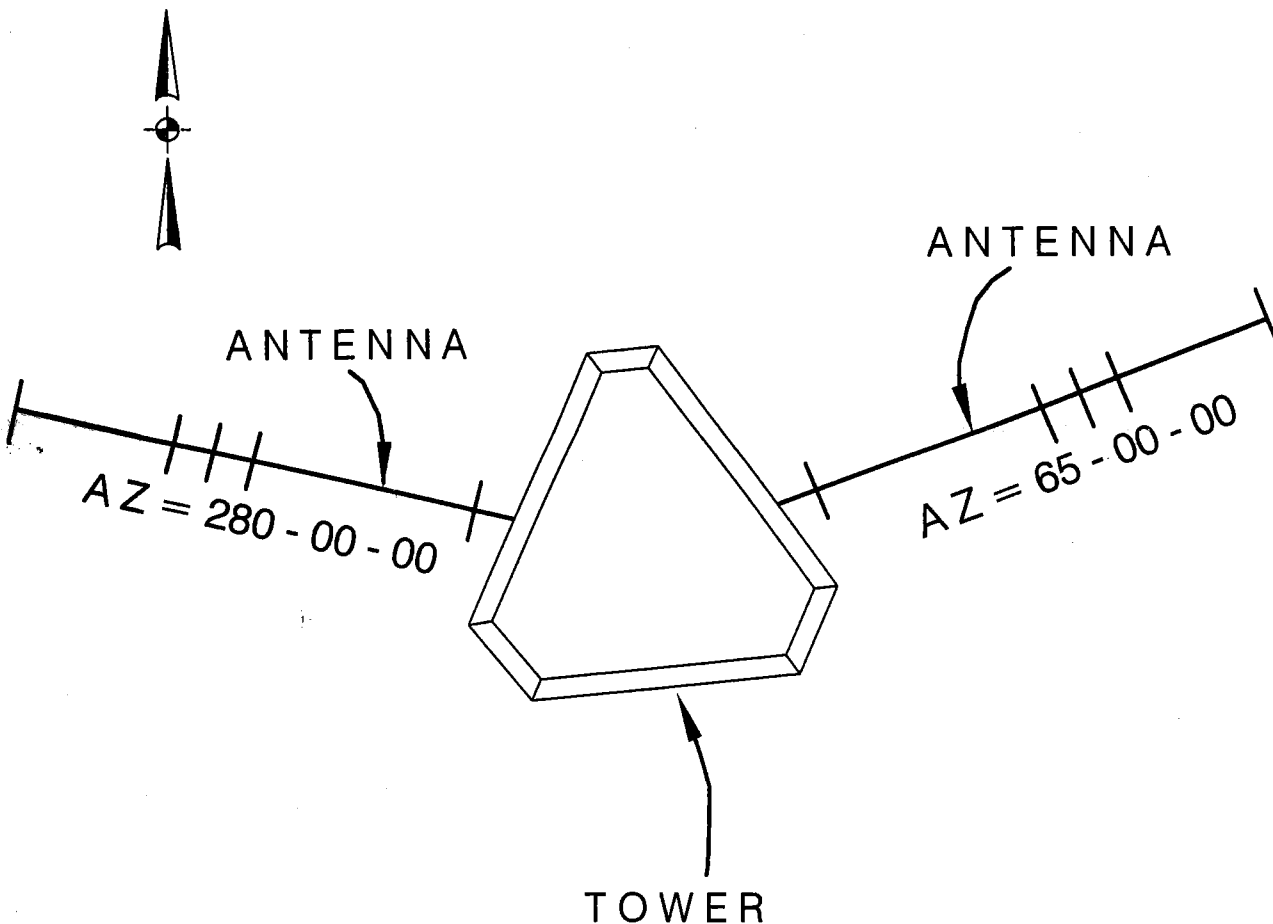
On 12 October 2010 I supervised all aspects of the WELH transmitter and antenna replacement. I certify that the new directional antenna is constructed and installed to the exact specification of the antenna manufacturer. The installed antenna is a new PSI (Propagation Systems Inc.) PSIFMDP-I-DA Custom 1-bay directional FM panel antenna which was factory tuned by PSI. The configuration was tested by PSI on a similar tower structure for directional characteristics as specified in the original construction permit.

The tower structure and orientation are as specified in the configuration used by PSI in tuning and testing of the installed antenna. The orientation of both the tower structure and antenna mounting was confirmed by E. Otis Dyer, a licensed surveyor headquartered in Rehoboth, MA. The antenna was installed to PSI specifications by Vertical Resources Group headquartered in Shrewsbury, MA.

I certify that I am a experienced broadcast engineer and am on record for previous filings. I am familiar with all aspects of the FCC regulations with regard to this project. I hold an associates degree in electronic technology as well as previous FCC First Class and General licenses. I have been involved with broadcast engineering and operations for 40+ years. All of the statements contained within this document are true and accurate to the best of my knowledge.


Stephen Craig Healy
Contract Engineer for The Wheeler School

13 OCT 2010
Date



(NOT TO SCALE)

OLD WALKER STREET

TOWER ANTENNA AS-BUILT ORIENTATION
FOR
WHEELER SCHOOL

357 WALKER STREET, SEEKONK, MASSACHUSETTS

E. OTIS DYER, JR., P.L.S.

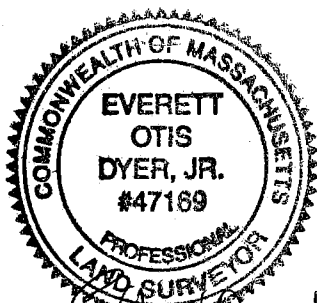
368 FAIRVIEW AVENUE

P.O. BOX 5 REHOBOTH, MASS.

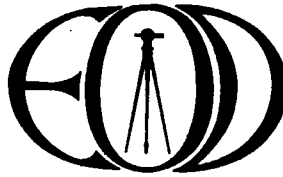
TEL. (508)-252-4363

FAX. (508)-252-5449

OCTOBER 12, 2010



Everett Otis Dyer, Jr.



E. OTIS DYER

368 FAIRVIEW AVENUE
BOX 5
REHOBOTH, MASS. 02769
Telephone: (508) 252-4363

*Registered Professional Engineer and Land Surveyor
in Massachusetts, Rhode Island and North Carolina*

October 12, 2010

To Whom it May Concern:

On October 12, 2010, I, E. Otis Dyer, Jr., observed the positioning of the WELH, Seekonk, MA antenna installation, PSI (Propagation Systems, Inc.) Antenna model: PSIFMDP-1-DA CUSTOM, 2 panel directional FM antenna.

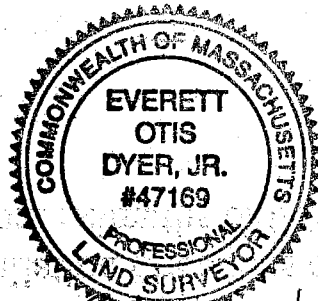
As prescribed in the installation directions of the test range proof of performance, the two boom azimuths of the antenna were calculated and verified.

As of the date of the fieldwork, the azimuth orientation of the first antenna boom was 65 degrees with respect to True North.

As of the date of the fieldwork, the azimuth orientation of the second antenna boom was 280 degrees with respect to True North.

The accuracy of this study is better than ± 0.49 degrees.

E. Otis Dyer, Jr.
Mass P.L.S. No 47169



E. Otis Dyer, Jr.