

EXHIBIT 17 – COMPREHENSIVE TECHNICAL EXHIBIT

INTRODUCTION

Applicant proposes an increase in ERP only, using the currently authorized directional antenna. There will be no change in the Center-of-Radiation, directional pattern or antenna orientation.

CHANNEL STUDY

A Channel Study (see **Figure 1**) of all nearby relevant 1st, 2nd, 3rd adjacent and I.F. frequencies reveals the lack of any contour overlap. The close relationship with WHJE, Carmel, IN is explored in **Figure 2**, and is shown in the expanded map shown in **figure 3**, detailing the absence of contour overlap with that facility. The close relationship with WFHB, Bloomington, IN is shown in **Figure 4**, and expanded in **Figure 5**. The close relationship with WNDY, Crawfordsville, IN is shown in **Figure 6**, and expanded in **Figure 7**.

| WDDL MINOR MODIFICATION The Power Foundation CH# 217A - 91.3 MHz, Pwr= 0.295 kw DA, HAAT= 45.4 M, COR= 275 M Average Protected F(50-50)= 9.2 km Standard Directional | | | | | | | | | | | |
|--|----------------|-------|-----|-------|------------------|------------|---------|---------|----------------------------|-----------------|-------|
| REFERENCE | | | | | | | | | | DISPLAY DATES | |
| 39 40 18.0 N. | | | | | | | | | | DATA 10-11-15 | |
| 86 21 30.0 W. | | | | | | | | | | SEARCH 10-11-15 | |
| CH | CALL | TYPE | ANT | AZI. | DIST | LAT. | Pwr(kW) | INT(km) | PRO(km) | *IN* | *OUT* |
| CITY | | STATE | | <-- | FILE # | LNG. | HAAT(M) | COR(M) | LICENSEE | (Overlap in km) | |
| 217A WDDL! | Plainfield | LIC | DCX | 0.0 | 0.00 | 39 40 18.0 | 0.200 | 22.4 | 6.7 | -29.8 | -31.5 |
| | | | IN | 0.0 | BLEDD20100629AFB | 86 21 30.0 | 43 | 275 | The Power Foundation | | |
| 217A WHJE | Carmel | LIC | CN | 30.7 | 39.81 | 39 58 45.0 | 0.400 | 29.7 | 8.4 | 1.5 | 0.0 |
| | | | IN | 210.9 | BLEDD1326 | 86 07 10.0 | 30 | 285 | Carmel/clay School Corpora | | |
| 217A WFHB | Bloomington | LIC | DCN | 196.2 | 75.22 | 39 01 18.0 | 1.600 | 69.3 | 22.3 | 0.2 | 35.7 |
| | | | IN | 16.1 | BLEDD19981221KKB | 86 36 05.0 | 119 | 338 | Bloomington Community Radi | | |
| 217A WNDY | Crawfordsville | LIC | VN | 311.2 | 64.96 | 40 03 19.0 | 2.200 | 57.5 | 15.4 | 0.3 | 26.9 |
| | | | IN | 130.9 | BLEDD19970212KA | 86 55 57.0 | 59 | 299 | wabash College Radio, Inc. | | |
| 217B1 WWQI | Morristown | LIC | DE | 103.5 | 54.94 | 39 33 18.0 | 14.500 | 43.5 | 12.4 | 0.6 | 3.6 |
| | | | IN | 283.9 | BMLDD20140805ADP | 85 44 06.0 | 56 | 302 | Horizon Christian Fellowsh | | |
| 215A WBDG | Indianapolis | LIC | CN | 24.6 | 13.83 | 39 47 05.0 | 0.400 | 1.4 | 8.7 | 3.3 | 3.3 |
| | | | IN | 204.7 | BLEDD19781214AB | 86 17 27.0 | 24 | 264 | Metropolitan School Distri | | |
| 270A WKLU« | Brownsburg | LIC | NCX | 21.5 | 13.76 | 39 47 13.0 | 4.000 | 96.7 | 34.4 | 9.5R | 4.3M |
| | | | IN | 201.6 | BMLDD20090812AAP | 86 17 57.0 | 110 | 345 | Educational Media Foundati | | |
| 218A WRFT | Indianapolis | LIC | C | 89.0 | 29.33 | 39 40 33.0 | 0.130 | 12.3 | 8.7 | 6.5 | 6.0 |
| | | | IN | 269.2 | BMLDD20060727AFL | 86 00 56.0 | 55 | 296 | Franklin Township Communit | | |
| 216A WEDM | Indianapolis | LIC | VN | 66.5 | 33.55 | 39 47 29.0 | 0.180 | 14.3 | 10.3 | 9.2 | 9.4 |
| | | | IN | 246.7 | BLEDD19920925KA | 85 59 53.0 | 66 | 312 | Metropolitan School Distri | | |
| 220A WITT | Zionsville | LIC | DCX | 345.5 | 38.15 | 40 00 14.0 | 6.000 | 2.5 | 26.1 | 28.2 | 10.8 |
| | | | IN | 165.4 | BLEDD20090602AAI | 86 28 14.0 | 91 | 376 | Kids First Incorporated | | |
| 216A WIRE | Lebanon | LIC | DVX | 350.8 | 44.11 | 40 03 48.0 | 3.200 | 22.3 | 14.8 | 14.6 | 17.8 |
| | | | IN | 170.7 | BMLDD20090615AEE | 86 26 29.0 | 64 | 347 | Community Radio Partners | | |
| 218A WGRE | Greencastle | LIC | VN | 265.3 | 43.40 | 39 38 19.0 | 0.800 | 15.0 | 10.7 | 20.7 | 21.5 |
| | | | IN | 85.0 | BLEDD19970411KA | 86 51 49.0 | 54 | 290 | Depauw University | | |
| 215B1 WCJL | Morgantown | LIC | DEX | 199.5 | 41.30 | 39 19 17.0 | 13.500 | 1.6 | 12.9 | 33.4 | 25.6 |
| | | | IN | 19.4 | BLEDD20051219AAC | 86 31 08.0 | 65 | 279 | Calvary Radio Network, Inc | | |
| 218A WJCY | Cicero | LIC | DVX | 18.4 | 61.70 | 40 11 53.0 | 0.475 | 15.0 | 10.5 | 37.8 | 39.0 |
| | | | IN | 198.6 | BLEDD20050126AGO | 86 07 44.0 | 59 | 331 | Calvary Radio Network, Inc | | |
| 216A WYGS | Hope | LIC | VX | 133.1 | 72.18 | 39 13 35.0 | 0.380 | 22.4 | 15.0 | 39.7 | 44.9 |
| | | | IN | 313.5 | BLEDD20100503ACS | 85 44 47.0 | 100 | 316 | Good Shepherd Radio, Inc. | | |
| 215A WSQM | Noblesville | LIC | DC | 39.9 | 49.84 | 40 00 53.9 | 1.300 | 0.7 | 8.1 | 39.8 | 40.2 |
| | | | IN | 220.1 | BLEDD20110914ACE | 85 58 58.1 | 43 | 292 | Inter Mirifica, Inc. | | |

| CH CITY | CALL | TYPE | ANT STATE | AZI. <-- | DIST FILE # | LAT. LNG. | Pwr(kw) HAAT(M) | INT(km) COR(M) | PRO(km) LICENSEE | *IN* (Overlap in km) | *OUT* |
|------------------------|----------|------|--------------|----------------|---------------------------|--------------------------|--------------------|-------------------|------------------------------------|-------------------------|-------|
| 219D Edinburgh | W219DO! | LIC | C IN | 131.4 311.7 | 51.80 BLFT20090925AAS | 39 21 45.0 85 54 23.0 | 0.019 91 | 0.3 304 | 6.5 Indiana Community Radio Co | 41.4 44.5 | |
| 214B1 Lafayette | WQSG | LIC | DVX IN | 350.7 170.6 | 78.75 BLED20051122ABJ | 40 22 14.0 86 30 32.0 | 17.000 100 | 3.1 347 | 30.7 American Family Associatio | 68.3 46.1 | |
| 219A Pendleton | WEEM-FM | LIC | CN IN | 55.5 235.9 | 64.37 BLED19801230AI | 39 59 52.0 85 44 07.0 | 1.200 47 | 1.5 319 | 15.5 South Madison Community Sc | 53.1 47.7 | |
| 214A Knightstown | WKPW | LIC | VX IN | 81.4 261.9 | 72.75 BLED20100830ABN | 39 46 01.0 85 31 00.0 | 4.400 55 | 2.2 347 | 22.7 New Castle Career Center | 60.2 48.8 | |
| 270D Bloomington | W270BH<! | CP | DC IN | 191.3 11.3 | 59.98 BPFT20150623AAA | 39 08 31.0 86 29 43.0 | 0.250 | 96.7 430 | 34.4 First Ventures Capital Par | 9.5R | 50.5M |
| 218B Seymour | WJLR | LIC | DCX IN | 152.6 332.9 | 106.21 BLED20070226AAX | 38 49 20.0 85 47 38.0 | 30.000 116 | 44.9 293 | 29.3 Educational Media Foundati | 52.7 66.8 | |
| 217A Muncie | WVHI | LIC | DEX IN | 53.6 234.3 | 99.60 BLED20081008AKK | 40 11 56.0 85 24 49.0 | 0.200 71 | 36.6 360 | 10.8 Ball State University | 53.3 56.9 | |
| 217A Muncie | WVHI | CP | DCX IN | 53.7 234.3 | 100.09 BPED20130403ABV | 40 12 03.1 85 24 30.2 | 0.380 40 | 32.6 328 | 9.7 Ball State University | 57.9 58.3 | |
| 271D Frankfort | W271BX<! | CP | DC IN | 348.2 168.0 | 69.70 BNPFT20130822AEM | 40 17 09.0 86 31 38.0 | 0.250 27 | 96.7 283 | 34.4 Kaspar Broadcasting Co, In | 9.5R | 60.2M |
| 218A Dayton | WCNB | LIC | CX IN | 337.5 157.3 | 84.63 BLED20110509AAO | 40 22 27.8 86 44 25.8 | 0.700 3 | 13.0 213 | 9.3 Indiana Community Radio Co | 64.4 65.2 | |
| 216B Vincennes | WVUB | LIC | CN IN | 220.7 40.0 | 148.85 BMLD20020930ABC | 38 39 06.0 87 28 37.0 | 50.000 152 | 76.1 293 | 50.4 Vincennes University | 65.0 89.2 | |
| 216B1 Hagerstown | WBSH | LIC | DEN IN | 72.8 253.5 | 103.82 BLED19971022KA | 39 56 31.0 85 11 41.0 | 8.000 66 | 26.1 400 | 17.8 Ball State University | 67.5 70.5 | |
| 217D Terre Haute | W217AS! | LIC | DV IN | 259.0 78.3 | 94.83 BLFT20040803AAL | 39 30 14.0 87 26 37.0 | 0.010 94 | 3.0 256 | 0.7 Pensacola Christian Colleg | 84.1 68.2 | |
| 220A Rushville | WRLN | LIC | NCX IN | 93.1 273.7 | 87.66 BLED20110812AAZ | 39 37 29.0 85 20 10.0 | 0.600 92 | 1.6 396 | 16.2 Rush County Schools | 75.5 70.2 | |
| 217B Yellow Springs | WYSO | CP | DCX OH | 89.3 270.7 | 195.28 BPED20121113ABZ | 39 40 19.0 84 04 34.4 | 36.000 174 | 114.5 447 | 44.3 Antioch College Corporatio | 70.6 113.4 | |
| 217B Yellow Springs | WYSO | LIC | DEX OH | 86.5 268.1 | 211.92 BLED20111108AOK | 39 45 46.0 83 52 59.0 | 50.000 122 | 129.5 420 | 48.0 Antioch College Corporatio | 71.9 127.2 | |
| 217B Milford | WJCZ | CP | DCX IL | 307.2 126.2 | 170.07 BPED20140114ABJ | 40 35 07.0 87 57 47.0 | 30.500 139 | 87.4 347 | 30.5 Calvary Radio Network, Inc | 75.3 113.4 | |
| 217B1 Milford | WJCZ | LIC | DCX IL | 307.2 126.2 | 170.07 BLED20050127AFE | 40 35 07.0 87 57 47.0 | 25.000 27 | 87.2 234 | 20.3 Calvary Radio Network, Inc | 75.5 125.8 | |
| 220A Terre Haute | WHOJ | LIC | CX IN | 256.1 75.4 | 92.07 BLED20090706ACC | 39 28 05.0 87 23 59.0 | 1.500 14 | 1.6 174 | 11.2 Covenant Network | 82.7 79.7 | |
| 217B1 Montpelier | WJCO | CP | DCX IN | 42.3 223.0 | 133.61 BPED20120712AAV | 40 33 21.0 85 17 38.0 | 11.000 57 | 44.6 318 | 12.4 Calvary Radio Network, Inc | 80.1 88.4 | |
| 219A Kokomo | WIWC | LIC | C IN | 2.6 182.7 | 103.32 BMLD20030404ABG | 40 36 00.0 86 18 08.0 | 2.100 91 | 1.9 319 | 20.3 The Moody Bible Institute | 93.1 81.7 | |
| 218A Attica | WFWR | LIC | VN IN | 312.0 131.5 | 101.51 BLED20000828ADT | 40 16 47.0 87 14 50.0 | 0.165 52 | 11.2 252 | 7.8 Fountain Warren Community | 83.2 84.1 | |
| 220A Lafayette | WJEF | LIC | CX IN | 331.6 151.3 | 91.88 BMLD20041210ABG | 40 23 52.0 86 52 26.0 | 0.250 28 | 1.1 226 | 7.1 Lafayette School Corp. | 83.6 83.8 | |
| 214A Terre Haute | WZIS-FM | LIC | CX IN | 260.1 79.3 | 102.08 BLED20140919AAH | 39 30 26.0 87 31 50.0 | 0.860 69 | 1.6 244 | 16.2 Indiana State University B | 92.7 84.4 | |

Terrain database is NGDC 30 SEC, R= 73.215 qualifying spacings or FCC minimum spacings in KM, M= Margin in KM
In & Out distances between contours are shown at closest points. Reference Zone= - Zone 1, Co to 3rd adjacent.
All separation margins (if shown) include rounding. Call signs with exclamation marks need not be protected.
Ant Column: (D= DA Standard, Z= DA 73.215, N= Not DA 73.215, _= Omni), Polarization (C,H,V,E), Beamtilt(Y,N,X)
"*"affixed to 'IN' or 'OUT' values = site inside restricted contour.
« = Station meets FCC minimum distance spacing for its class.

Facility being modified.

Figure 1

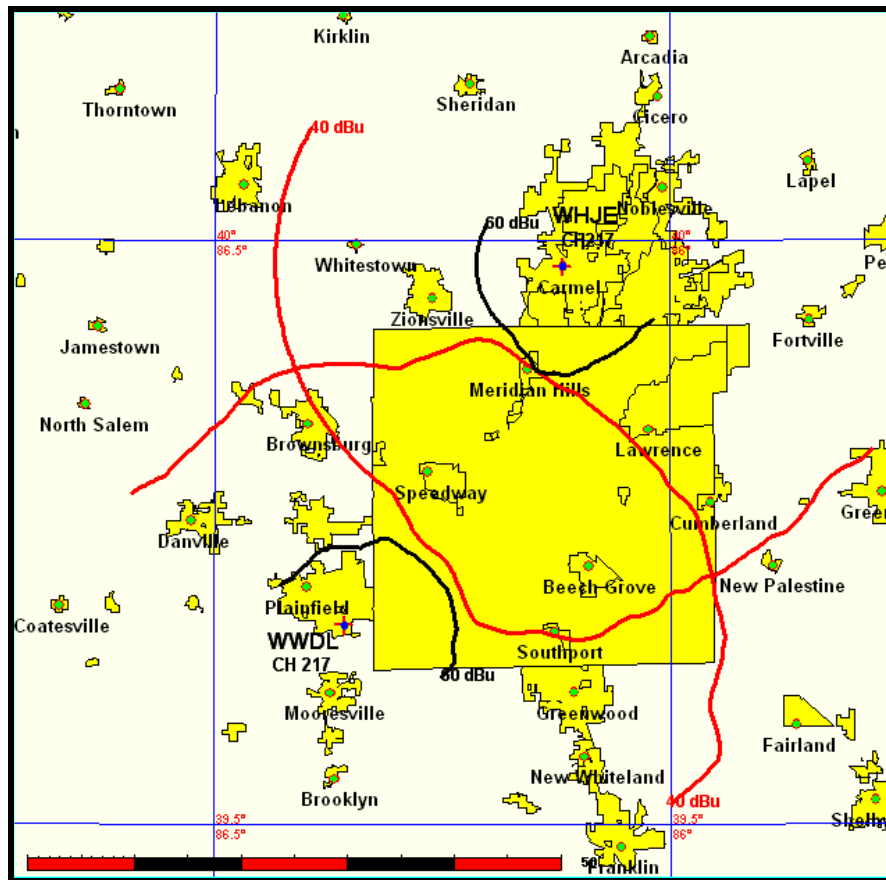


Figure 2

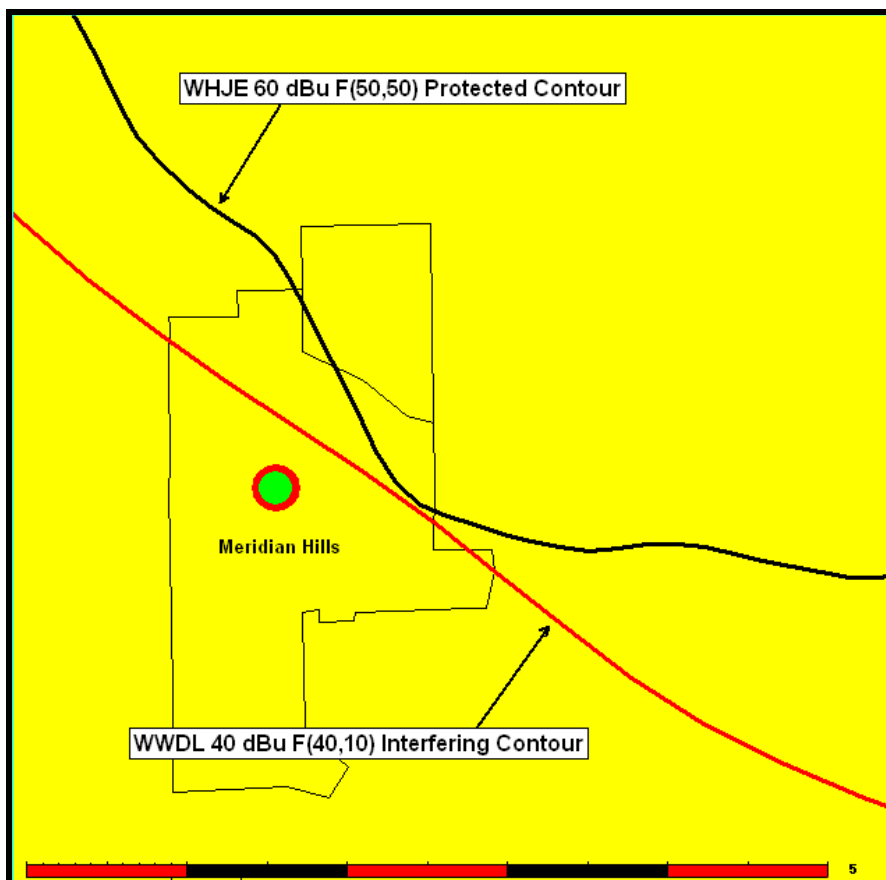


Figure 3

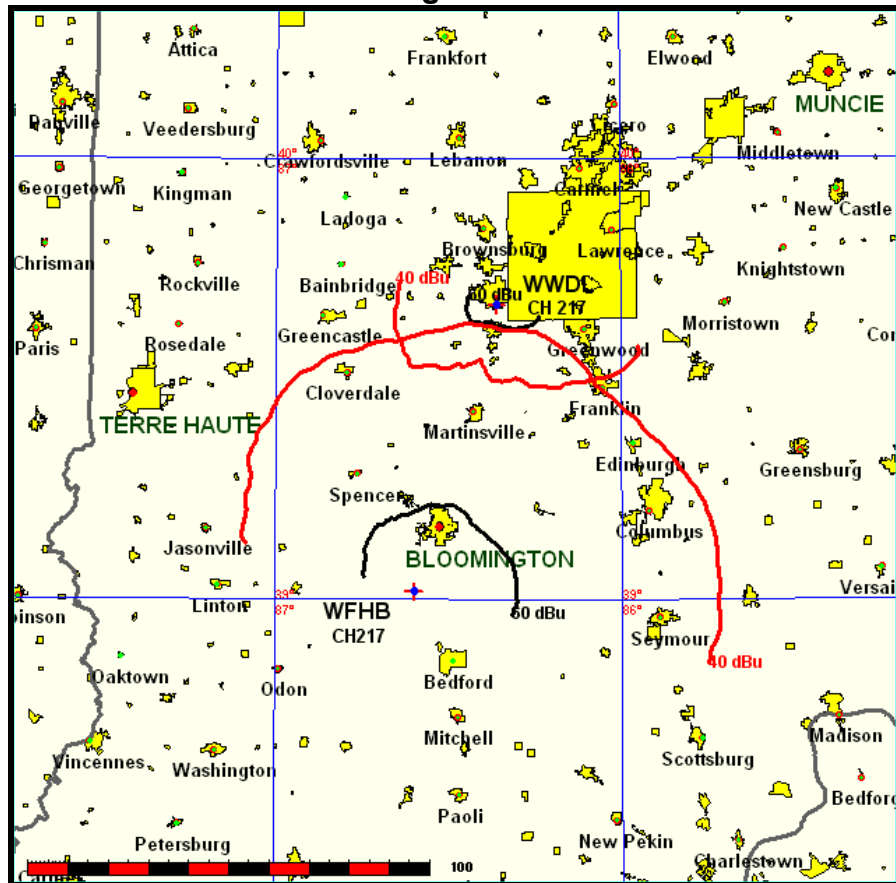


Figure 4

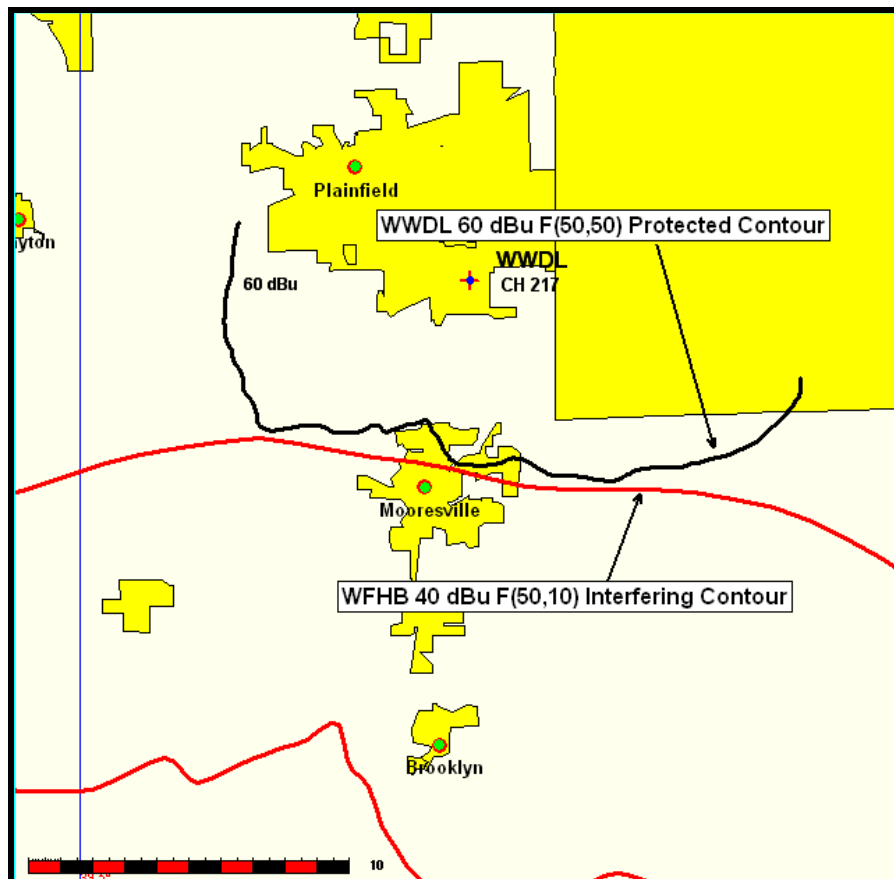


Figure 5

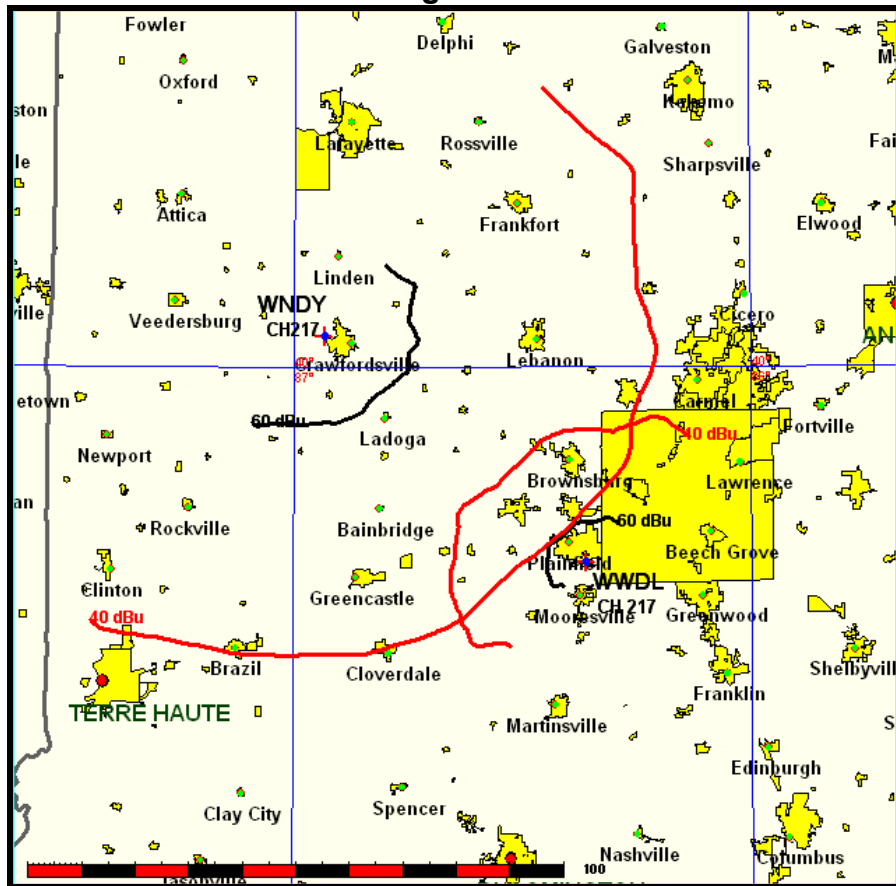


Figure 6

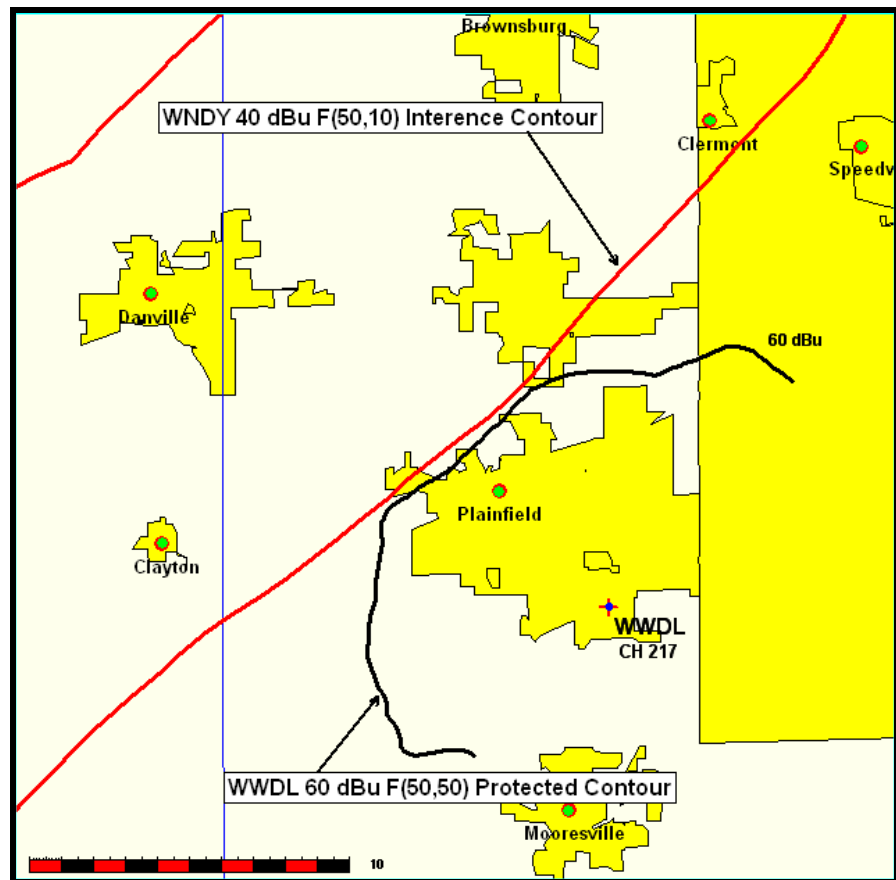


Figure 7

CITY OF LICENSE COVERAGE

The proposed facility continues to provide service to more than 50 % of the population of the city of license, Plainfield, IN, and more than 50 % of the land area of the city (see **Figure 8**).

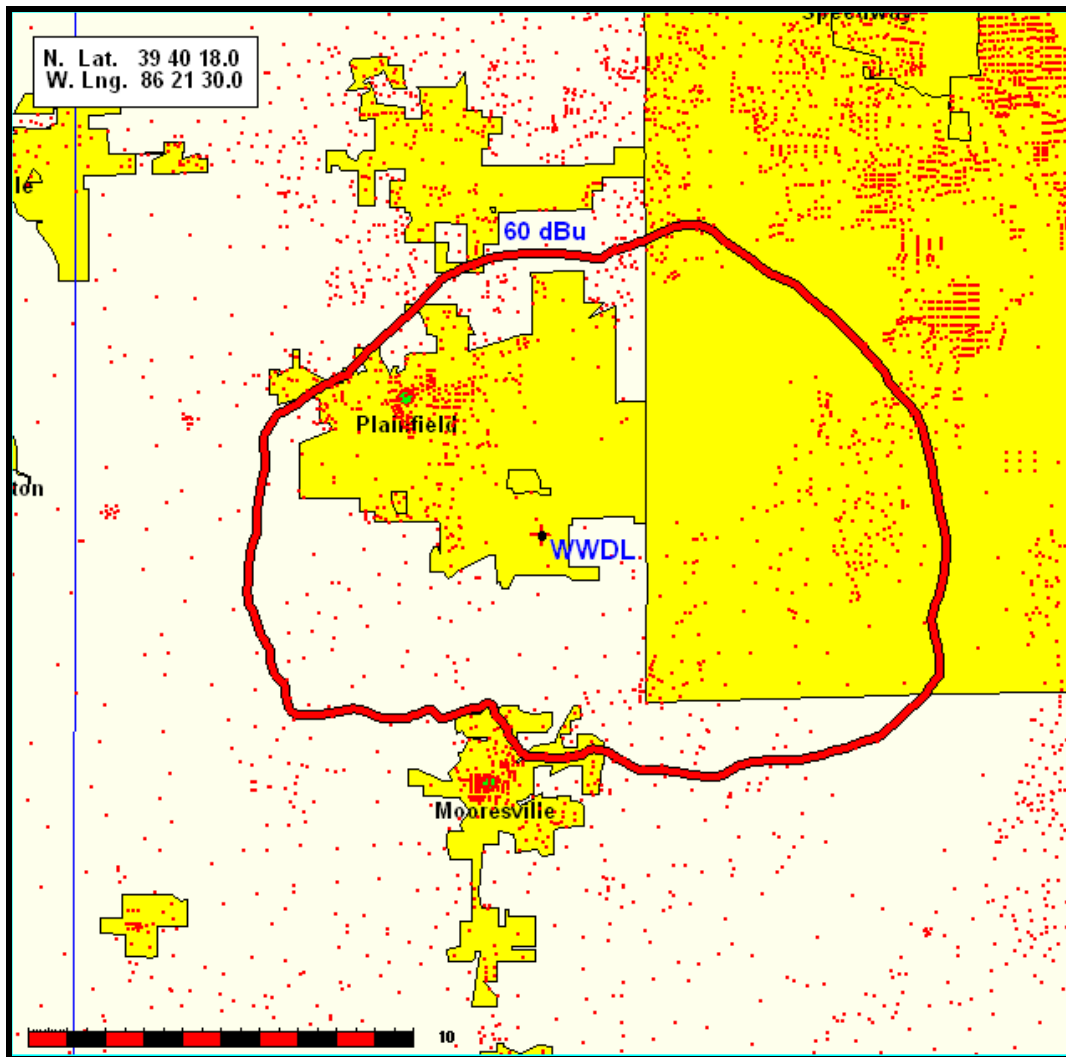


Figure 8

TV CHANNEL 6 PROTECTION

There are no TV Channel 6 facilities in the vicinity requiring further investigation. See **Figure 1**.

ENVIRONMENTAL PROTECTION

The Applicant proposes an increase in ERP only. There will be no new construction. The transmitting antenna is located on an existing tower in an existing tower site compound.

The Applicant proposes an ERP (H&V) of 295 watts using the currently authorized single bay ERI Rototiller antenna mounted at 39 meters AGL. The applicant is the only continuously transmitting apparatus from the communications site. Using the FMModel program, the maximum radiation level is 3.204 Microwatts per centimeter squared at 37 meters from the base of the tower. Thus the applicant is categorically excluded from further environmental processing.