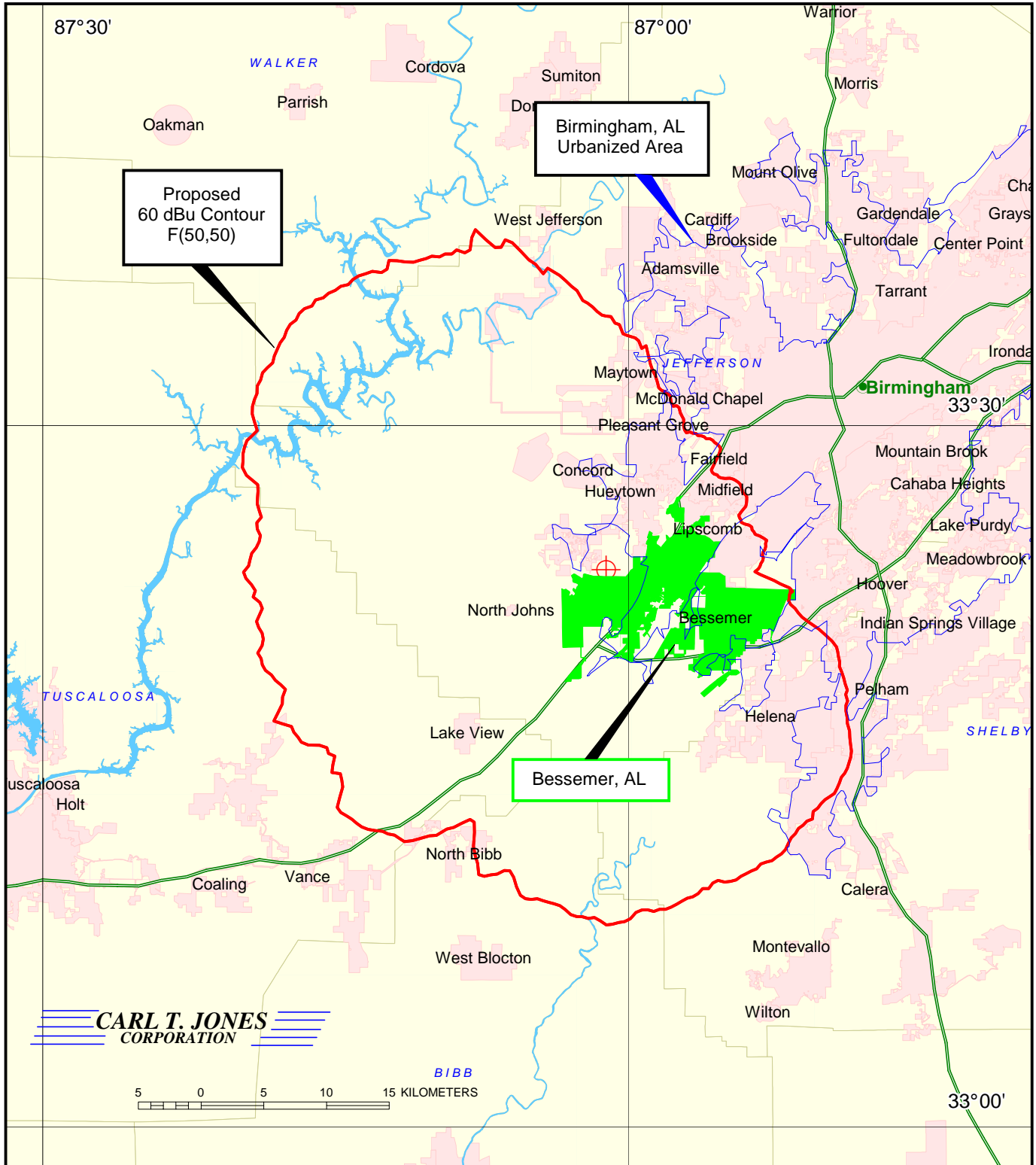


Proposed 60 dBu Contour Total Population = 160,955 persons  
 Proposed 60 dBu Contour Total Land Area = 1,827 sq. km.

**EXHIBIT 1**



The proposed 60 dBu contour covers 105.3 km<sup>2</sup> of Bessemer's 105.6 km<sup>2</sup> land area. This represents 99.7% coverage of Bessemer and demonstrates compliance with §73.515.

Also, the proposed 60 dBu contour covers 182.4 km<sup>2</sup> of the Birmingham 1,020 km<sup>2</sup> Urbanized Area. This represents 17.9% coverage of the Birmingham Urbanized Area.

**SECTION 73.515 STUDY**  
**WSJL(FM), BESSEMER, ALABAMA**  
**CH. 201A, 6.0 kW (V-ONLY, DA-MAX), 98 m HAAT**  
**OCTOBER, 2009**