



To Whom it May Concern:

This letter is to affirm that W279CO and W258CX are on the same tower, but are utilizing separate antennas to broadcast.

When the original Construction Permit Application was filed, our engineer erroneously loaded the incorrect height above ground level, when W258CX is actually 3.7 Meters below the transmitting antenna for W279CO.

The enclosed photograph of the WRMQ-AM Tower shows both separate antennas to demonstrate they are not using a shared antenna. Therefore Condition 3 has been met.

Florida Broadcasters Partnership will file a Modification To Licensed Facility if necessary to correct the height once the License is granted by the Commission.

Sincerely,

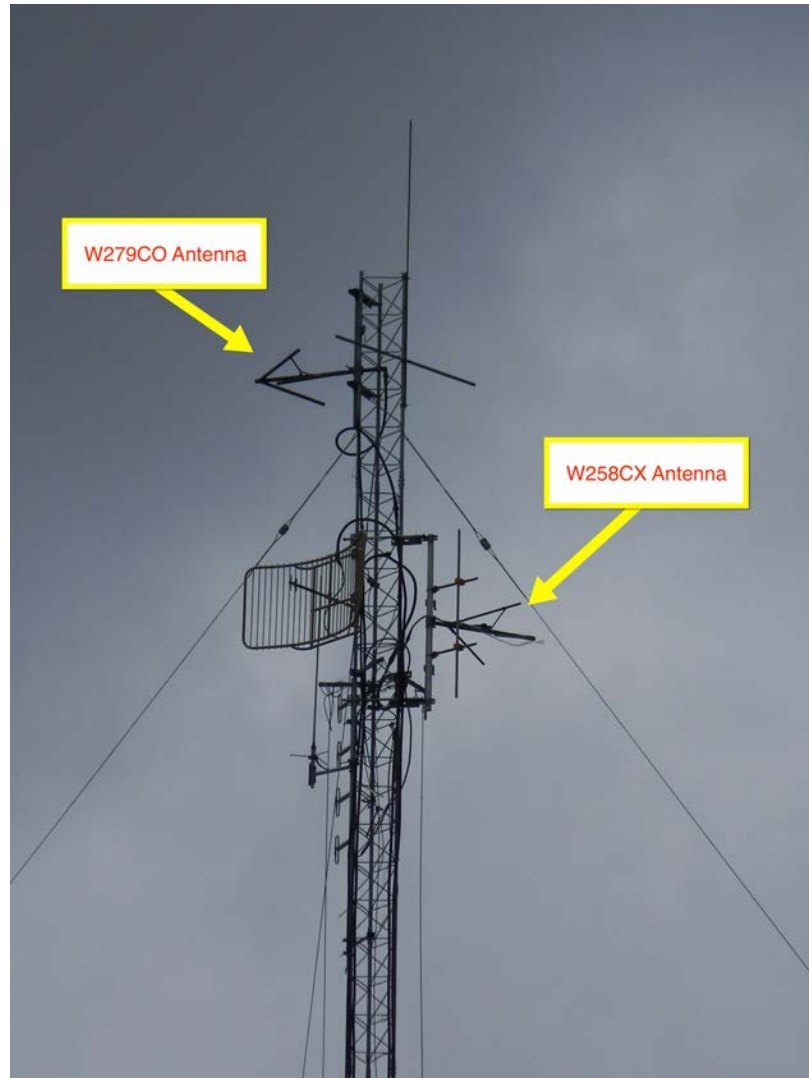
A handwritten signature in blue ink, appearing to read "George M. Arroyo", written over the printed name.

George M. Arroyo
Partner

Florida Broadcasters Partnership

Florida Broadcasters Partnership

1355 E. Altamonte Dr.
Altamonte Springs, FL 32701
Phone: (407) 830-0800 Fax: (407) 260-6100



Florida Broadcasters Partnership
1355 E. Altamonte Dr.
Altamonte Springs, FL 32701
Phone: (407) 830-0800 Fax: (407) 260-6100