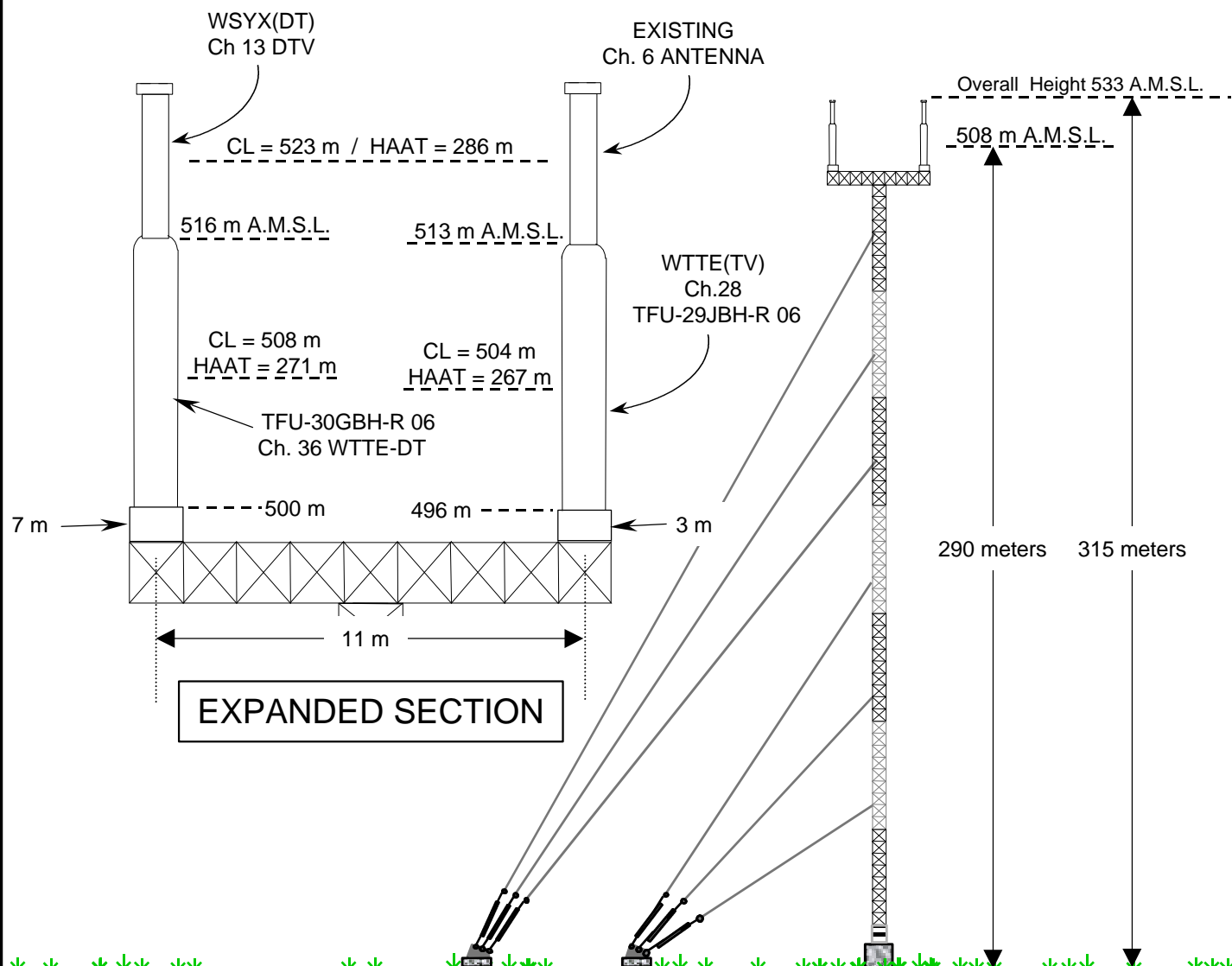


COORDINATES NAD-27  
NORTH LATITUDE: 39° 56' 14"  
WEST LONGITUDE: 83° 01' 16"

EXHIBIT 1



GROUND ELEVATION = 218 meters A.M.S.L. / AVERAGE TERRAIN = 237 meters A.M.S.L. / HAAT = 271 meters

**VERTICAL PLAN ANTENNA SKETCH**  
TV STATION WTTE-DT - COLUMBUS, OHIO  
Ch. 36 - 1000 kW - 271 m HAAT  
OCTOBER, 2001

**CARL T. JONES**  
CORPORATION

NOTE : NOT DRAWN TO SCALE