

Exhibit 18.6a - Protection Toward WTJT, Baker, FL

Scale 1:2,000,000

FMCommander Single Allocation Study - 09-10-2013 - FCC NGDC 30 Sec

WJTF.p's Overlaps (In= 0.57 km, Out= 8.6 km)

WJTF.p CH 210 C1 DA

Lat= 30 19 40.9, Lng= 85 41 22.1

100.0 kW 116 M HAAT, 126 M COR

Prot.= 60 dBu, Intef.= 54 dBu

WTJT CH 211 C2 DA BLED20031106AKJ

Lat= 30 49 19.0, Lng= 86 42 37.0

50.0 kW 127 M HAAT, 172 M COR

Prot.= 60 dBu, Intef.= 54 dBu

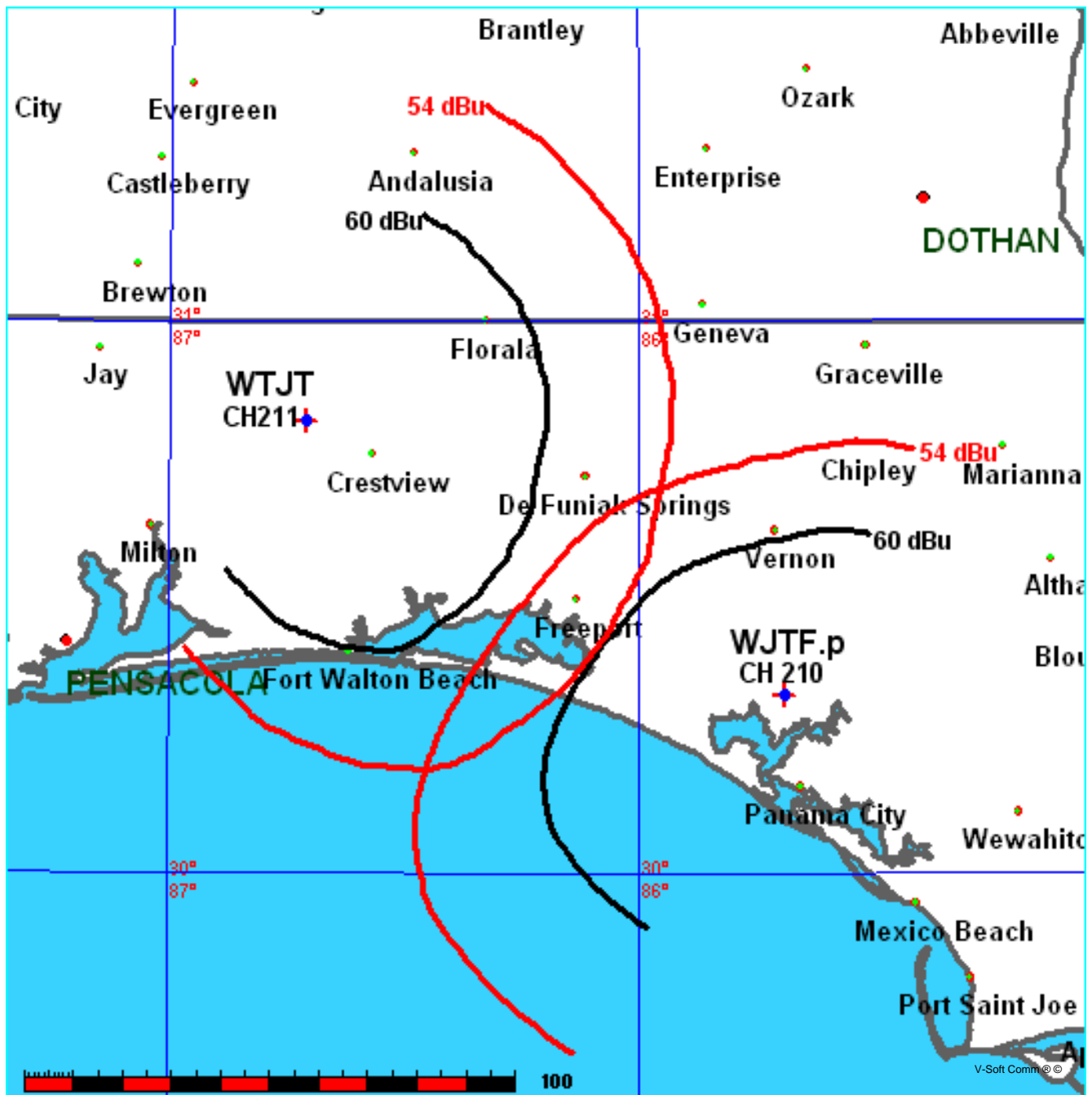


Exhibit 18.6b - Protection Toward WTJT, Baker, FL

Scale 1:500,000

FMCommander Single Allocation Study - 09-10-2013 - FCC NGDC 30 Sec

WJTF.p's Overlaps (In= 0.57 km, Out= 8.6 km)

WJTF.p CH 210 C1 DA

Lat= 30 19 40.9, Lng= 85 41 22.1

100.0 kW 116 M HAAT, 126 M COR

Prot.= 60 dBu, Intef.= 54 dBu

WTJT CH 211 C2 DA BLED20031106AKJ

Lat= 30 49 19.0, Lng= 86 42 37.0

50.0 kW 127 M HAAT, 172 M COR

Prot.= 60 dBu, Intef.= 54 dBu

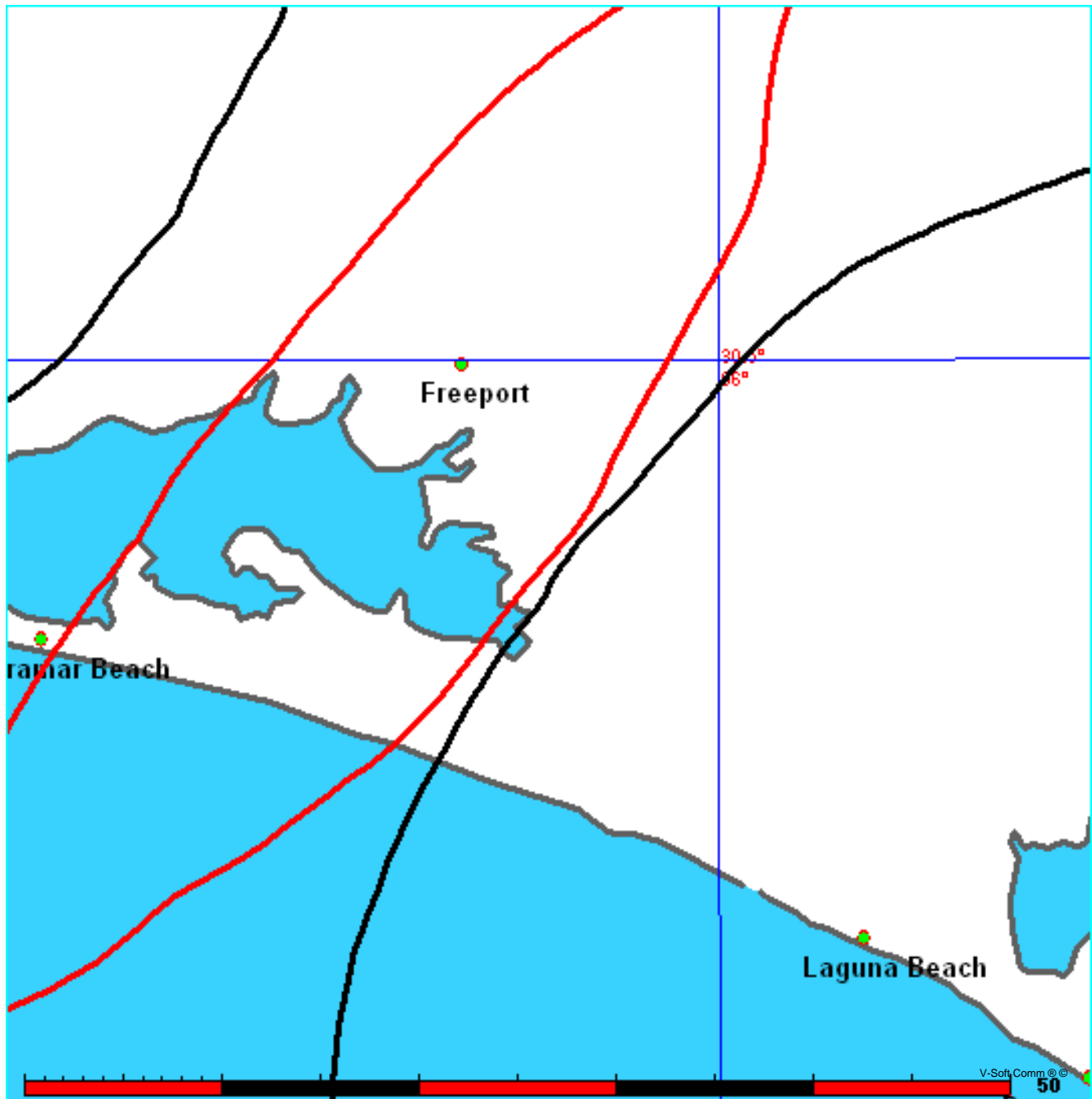


Exhibit 18.5c - FMOver Analysis: WJTF.p - WTJT

Terrain Data: FCC NGDC 30 Sec

09-11-2013

WJTF.p

WTJT BLED20031106AKJ

Channel = 210C1
Max ERP = 100 kW
RCAMSL = 126 M
N. Lat. 30 19 40.9
W. Lng. 85 41 22.1
Protected
60 dBu

Channel = 211C2
Max ERP = 50 kW
RCAMSL = 172 M
N. Lat. 30 49 19.0
W. Lng. 86 42 37.0
Interfering
54 dBu

Azimuth (degrees)	ERP (kW)	HAAT (m)	Dist (km)	Azimuth (degrees)	ERP (kW)	HAAT (m)	Dist (km)	Actual (dBu)	IX (km)
240.0	100.0000	0125.0	055.0	148.4	050.0000	0128.9	096.7	47.74	
241.0	097.7357	0125.0	054.8	148.3	050.0000	0128.7	095.7	47.98	
242.0	095.4973	0125.0	054.6	148.1	050.0000	0128.5	094.8	48.22	
243.0	093.2848	0125.0	054.3	148.0	050.0000	0128.2	093.9	48.46	
244.0	091.0983	0125.0	054.1	147.8	050.0000	0128.0	092.9	48.70	
245.0	088.9377	0125.0	053.9	147.6	050.0000	0127.8	092.0	48.95	
246.0	086.8030	0124.9	053.7	147.4	050.0000	0127.7	091.1	49.19	
247.0	084.6942	0124.9	053.4	147.1	050.0000	0127.5	090.2	49.43	
248.0	082.6114	0124.8	053.2	146.9	050.0000	0127.4	089.4	49.67	
249.0	080.5545	0124.7	053.0	146.6	050.0000	0127.4	088.5	49.92	
250.0	078.5236	0124.6	052.7	146.3	050.0000	0127.6	087.6	50.17	
251.0	075.3268	0124.5	052.3	145.9	050.0000	0127.8	086.9	50.41	
252.0	072.1964	0124.4	051.9	145.5	050.0000	0128.2	086.1	50.64	
253.0	069.1325	0124.3	051.5	145.1	050.0000	0128.6	085.3	50.88	
254.0	066.1350	0124.2	051.1	144.6	050.0000	0129.0	084.6	51.11	
255.0	063.2039	0124.1	050.7	144.2	050.0000	0129.3	083.9	51.32	
256.0	060.3392	0124.1	050.3	143.7	050.0000	0129.6	083.2	51.53	
257.0	057.5410	0124.1	049.8	143.2	050.0000	0129.7	082.6	51.73	
258.0	054.8093	0124.0	049.4	142.6	050.0000	0129.8	082.0	51.91	
259.0	052.1439	0123.6	048.9	142.1	050.0000	0129.8	081.4	52.07	
260.0	049.5450	0123.0	048.3	141.4	050.0000	0129.9	080.9	52.22	
261.0	047.5280	0122.2	047.8	140.9	050.0000	0129.9	080.4	52.37	
262.0	045.5528	0121.5	047.4	140.3	050.0000	0130.1	080.0	52.52	
263.0	043.6196	0121.0	046.9	139.7	050.0000	0130.5	079.5	52.67	
264.0	041.7283	0120.2	046.4	139.0	050.0000	0131.0	079.1	52.81	
265.0	039.8790	0119.6	045.9	138.4	050.0000	0131.4	078.7	52.94	
266.0	038.0715	0119.2	045.5	137.8	050.0000	0131.8	078.4	53.07	
267.0	036.3059	0118.8	045.0	137.2	050.0000	0132.1	078.0	53.19	
268.0	034.5823	0118.4	044.5	136.5	050.0000	0132.3	077.7	53.28	
269.0	032.9006	0118.1	044.1	135.9	050.0000	0132.4	077.5	53.37	
270.0	031.2608	0117.8	043.6	135.3	050.0000	0132.3	077.2	53.43	
271.0	029.9881	0117.5	043.2	134.7	050.0000	0132.1	077.0	53.50	
272.0	028.7419	0117.2	042.8	134.0	050.0000	0131.8	076.8	53.55	
273.0	027.5221	0116.9	042.4	133.4	050.0000	0131.4	076.6	53.60	
274.0	026.3288	0116.7	042.0	132.8	050.0000	0131.0	076.4	53.63	
275.0	025.1619	0116.6	041.6	132.2	050.0000	0130.5	076.2	53.65	

Azimuth (degrees)	ERP (kW)	HAAT (m)	Dist (km)	Azimuth (degrees)	ERP (kW)	HAAT (m)	Dist (km)	Actual (dBu)
276.0	024.0215	0116.5	041.2	131.6	050.0000	0130.0	076.1	53.66
277.0	022.9075	0116.4	040.8	131.0	050.0000	0129.5	076.0	53.67
278.0	021.8200	0116.3	040.4	130.4	050.0000	0129.3	076.0	53.67
279.0	020.7589	0116.2	040.0	129.8	050.0000	0129.1	075.9	53.67
280.0	019.7242	0116.1	039.6	129.1	050.0000	0129.1	076.0	53.67
281.0	019.1676	0116.1	039.4	128.6	050.0000	0129.2	075.8	53.71
282.0	018.6189	0116.0	039.1	128.1	050.0000	0129.4	075.7	53.75
283.0	018.0781	0116.0	038.9	127.5	050.0000	0129.7	075.6	53.79
284.0	017.5454	0115.7	038.6	127.0	050.0000	0130.1	075.6	53.82
285.0	017.0206	0115.3	038.3	126.4	050.0000	0130.4	075.6	53.83
286.0	016.5037	0114.6	038.0	125.8	050.0000	0130.6	075.7	53.81
287.0	015.9949	0113.9	037.6	125.3	050.0000	0130.5	075.8	53.78
288.0	015.4940	0113.2	037.3	124.7	050.0000	0130.2	075.9	53.72
289.0	015.0011	0112.6	036.9	124.2	050.0000	0129.7	076.1	53.66
290.0	014.5161	0112.2	036.6	123.7	050.0000	0129.1	076.2	53.59
291.0	014.2129	0111.8	036.4	123.2	050.0000	0128.5	076.3	53.54
292.0	013.9129	0111.4	036.2	122.7	050.0000	0128.0	076.4	53.49
293.0	013.6161	0111.1	036.0	122.2	050.0000	0127.6	076.5	53.44
294.0	013.3225	0110.8	035.8	121.7	050.0000	0127.3	076.6	53.39
295.0	013.0321	0110.6	035.6	121.2	050.0000	0127.1	076.7	53.34
296.0	012.7449	0110.5	035.4	120.7	050.0000	0126.9	076.8	53.30
297.0	012.4609	0110.5	035.2	120.3	050.0000	0126.9	076.9	53.26
298.0	012.1801	0110.8	035.0	119.8	050.0000	0126.9	077.1	53.23
299.0	011.9025	0111.1	034.9	119.3	050.0000	0126.9	077.2	53.19
300.0	011.6281	0111.3	034.8	118.9	050.0000	0127.0	077.3	53.15
301.0	011.4989	0111.4	034.7	118.4	050.0000	0127.1	077.4	53.13
302.0	011.3704	0111.4	034.6	118.0	050.0000	0127.1	077.5	53.10
303.0	011.2426	0111.4	034.5	117.6	050.0000	0127.2	077.7	53.06
304.0	011.1156	0111.3	034.4	117.1	050.0000	0127.2	077.8	53.01
305.0	010.9892	0111.2	034.3	116.7	050.0000	0127.3	078.0	52.96
306.0	010.8636	0111.0	034.2	116.3	050.0000	0127.4	078.2	52.91
307.0	010.7387	0110.8	034.1	115.9	050.0000	0127.5	078.4	52.85
308.0	010.6146	0110.7	033.9	115.5	050.0000	0127.6	078.7	52.79
309.0	010.4911	0110.5	033.8	115.1	050.0000	0127.8	078.9	52.72
310.0	010.3684	0110.4	033.7	114.7	050.0000	0128.1	079.2	52.66
311.0	010.2208	0110.3	033.6	114.3	050.0000	0128.4	079.4	52.60
312.0	010.0743	0110.2	033.5	113.9	050.0000	0128.8	079.7	52.53
313.0	009.9288	0110.2	033.4	113.5	050.0000	0129.1	080.0	52.46
314.0	009.7844	0110.2	033.2	113.2	050.0000	0129.3	080.3	52.38
315.0	009.6410	0110.3	033.1	112.8	050.0000	0129.6	080.6	52.30
316.0	009.4987	0110.3	033.0	112.5	050.0000	0129.8	081.0	52.21
317.0	009.3575	0110.2	032.9	112.1	050.0000	0129.9	081.3	52.11
318.0	009.2173	0110.0	032.7	111.8	050.0000	0129.8	081.7	52.00
319.0	009.0782	0109.8	032.6	111.5	050.0000	0129.7	082.1	51.88
320.0	008.9401	0109.5	032.4	111.2	050.0000	0129.4	082.5	51.75
321.0	008.8031	0109.1	032.3	110.9	050.0000	0129.2	082.9	51.61
322.0	008.6671	0109.0	032.1	110.6	050.0000	0128.8	083.3	51.48
323.0	008.5322	0109.1	032.0	110.3	050.0000	0128.5	083.7	51.35
324.0	008.3984	0109.4	031.9	110.0	050.0000	0128.1	084.1	51.22
325.0	008.2656	0109.3	031.8	109.8	050.0000	0127.6	084.5	51.08
326.0	008.1339	0109.1	031.6	109.5	050.0000	0127.2	084.9	50.93

Azimuth (degrees)	ERP (kW)	HAAT (m)	Dist (km)	Azimuth (degrees)	ERP (kW)	HAAT (m)	Dist (km)	Actual (dBu)
327.0	008.0032	0108.9	031.5	109.3	050.0000	0126.7	085.4	50.78
328.0	007.8736	0108.7	031.3	109.1	050.0000	0126.2	085.8	50.63
329.0	007.7451	0108.7	031.2	108.8	050.0000	0125.7	086.3	50.48
330.0	007.6176	0108.8	031.1	108.6	050.0000	0125.2	086.7	50.33
331.0	007.5570	0108.9	031.1	108.4	050.0000	0124.7	087.1	50.20
332.0	007.4966	0108.9	031.0	108.1	050.0000	0124.3	087.5	50.06
333.0	007.4365	0108.9	030.9	107.9	050.0000	0123.9	087.9	49.93
334.0	007.3767	0108.7	030.9	107.7	050.0000	0123.5	088.4	49.79
335.0	007.3170	0108.6	030.8	107.5	050.0000	0123.3	088.8	49.65
336.0	007.2576	0108.6	030.7	107.3	050.0000	0123.0	089.2	49.52
337.0	007.1985	0108.8	030.7	107.1	050.0000	0122.8	089.7	49.39
338.0	007.1396	0108.9	030.6	106.9	050.0000	0122.6	090.1	49.26
339.0	007.0809	0108.8	030.6	106.7	050.0000	0122.4	090.6	49.12
340.0	007.0225	0108.5	030.5	106.5	050.0000	0122.3	091.1	48.98
341.0	007.0596	0107.9	030.4	106.4	050.0000	0122.2	091.5	48.86
342.0	007.0969	0107.3	030.4	106.2	050.0000	0122.1	092.0	48.72
343.0	007.1342	0106.9	030.4	106.0	050.0000	0122.0	092.4	48.60
344.0	007.1717	0106.5	030.4	105.9	050.0000	0121.9	092.9	48.47
345.0	007.2092	0105.9	030.3	105.7	050.0000	0121.9	093.3	48.34
346.0	007.2469	0105.0	030.2	105.6	050.0000	0121.9	093.8	48.21
347.0	007.2846	0104.2	030.1	105.5	050.0000	0121.9	094.3	48.07
348.0	007.3224	0104.2	030.2	105.3	050.0000	0121.9	094.8	47.96
349.0	007.3604	0104.8	030.3	105.1	050.0000	0121.9	095.2	47.85
350.0	007.3984	0105.6	030.4	104.9	050.0000	0121.9	095.6	47.74
351.0	007.4693	0106.1	030.6	104.7	050.0000	0121.9	096.0	47.63
352.0	007.5405	0106.4	030.7	104.5	050.0000	0121.9	096.5	47.51
353.0	007.6121	0106.3	030.8	104.3	050.0000	0121.9	096.9	47.39
354.0	007.6840	0105.6	030.7	104.2	050.0000	0121.9	097.5	47.26
355.0	007.7562	0105.0	030.7	104.1	050.0000	0121.8	098.0	47.13
356.0	007.8288	0104.5	030.7	104.0	050.0000	0121.8	098.5	47.00
357.0	007.9017	0104.1	030.7	103.9	050.0000	0121.8	099.0	46.87
358.0	007.9750	0103.7	030.7	103.8	050.0000	0121.8	099.5	46.74
359.0	008.0486	0103.6	030.8	103.7	050.0000	0121.7	100.0	46.62

09-11-2013

Terrain Data: FCC NGDC 30 Sec

FMOver Analysis

WTJT BLED20031106AKJ

WJTF.p

Channel = 211C2

Max ERP = 50 kW

RCAMSL = 172 M

N. Lat. 30 49 19.0

W. Lng. 86 42 37.0

Protected

60 dBu

Channel = 210C1

Max ERP = 100 kW

RCAMSL = 126 M

N. Lat. 30 19 40.9

W. Lng. 85 41 22.1

Interfering

54 dBu

Azimuth (degrees)	ERP (kW)	HAAT (m)	Dist (km)	Azimuth (degrees)	ERP (kW)	HAAT (m)	Dist (km)	Actual (dBu)	IX (km)
059.0	050.0000	0128.6	049.2	325.6	008.1899	0109.2	097.4	38.92	
060.0	050.0000	0129.2	049.3	325.6	008.1885	0109.2	096.5	39.13	
061.0	050.0000	0129.2	049.3	325.5	008.1945	0109.2	095.7	39.36	
062.0	050.0000	0128.8	049.2	325.4	008.2074	0109.2	094.8	39.58	
063.0	050.0000	0128.0	049.1	325.3	008.2252	0109.3	094.0	39.81	
064.0	050.0000	0127.6	049.1	325.2	008.2408	0109.3	093.1	40.04	
065.0	050.0000	0127.6	049.1	325.1	008.2523	0109.3	092.3	40.27	
066.0	050.0000	0128.2	049.2	325.1	008.2588	0109.3	091.4	40.50	
067.0	050.0000	0129.2	049.3	325.0	008.2619	0109.3	090.6	40.74	
068.0	050.0000	0130.1	049.4	325.0	008.2677	0109.3	089.7	40.98	
069.0	050.0000	0130.5	049.5	324.9	008.2808	0109.4	088.8	41.22	
070.0	050.0000	0130.3	049.5	324.7	008.3024	0109.4	088.0	41.47	
071.0	050.0000	0129.9	049.4	324.5	008.3295	0109.4	087.2	41.70	
072.0	050.0000	0129.2	049.3	324.3	008.3596	0109.4	086.4	41.94	
073.0	050.0000	0128.7	049.2	324.1	008.3904	0109.4	085.6	42.18	
074.0	050.0000	0128.2	049.2	323.8	008.4229	0109.3	084.8	42.42	
075.0	050.0000	0127.7	049.1	323.6	008.4572	0109.3	084.1	42.65	
076.0	050.0000	0127.2	049.0	323.3	008.4942	0109.2	083.3	42.88	
077.0	050.0000	0126.7	048.9	323.0	008.5320	0109.1	082.6	43.11	
078.0	050.0000	0126.8	048.9	322.8	008.5652	0109.1	081.8	43.35	
079.0	050.0000	0127.3	049.0	322.5	008.5949	0109.0	081.0	43.59	
080.0	050.0000	0128.3	049.2	322.3	008.6207	0109.0	080.1	43.83	
081.0	050.0000	0129.2	049.3	322.1	008.6503	0109.0	079.3	44.08	
082.0	050.0000	0129.6	049.4	321.9	008.6874	0109.0	078.6	44.32	
083.0	050.0000	0129.7	049.4	321.5	008.7312	0109.0	077.8	44.55	
084.0	050.0000	0129.5	049.3	321.2	008.7796	0109.1	077.1	44.79	
085.0	050.0000	0128.8	049.2	320.8	008.8370	0109.2	076.4	45.01	
086.0	050.0000	0128.2	049.2	320.3	008.8955	0109.3	075.8	45.24	
087.0	050.0000	0127.6	049.1	319.9	008.9563	0109.5	075.2	45.46	
088.0	050.0000	0126.9	049.0	319.4	009.0209	0109.6	074.6	45.67	
089.0	050.0000	0126.6	048.9	319.0	009.0833	0109.8	073.9	45.89	
090.0	050.0000	0126.5	048.9	318.5	009.1452	0109.9	073.3	46.12	
091.0	050.0000	0126.4	048.9	318.1	009.2094	0110.0	072.7	46.33	

Azimuth (degrees)	ERP (kW)	HAAT (m)	Dist (km)	Azimuth (degrees)	ERP (kW)	HAAT (m)	Dist (km)	Actual (dBu)
092.0	050.0000	0126.4	048.9	317.6	009.2761	0110.1	072.1	46.55
093.0	050.0000	0125.9	048.8	317.1	009.3494	0110.1	071.5	46.75
094.0	050.0000	0124.8	048.7	316.5	009.4329	0110.2	071.1	46.93
095.0	050.0000	0123.6	048.5	315.9	009.5186	0110.3	070.6	47.10
096.0	050.0000	0122.9	048.4	315.3	009.6017	0110.3	070.2	47.28
097.0	050.0000	0122.6	048.4	314.7	009.6826	0110.3	069.7	47.46
098.0	050.0000	0121.9	048.3	314.1	009.7693	0110.2	069.3	47.63
099.0	050.0000	0121.7	048.2	313.5	009.8540	0110.2	068.8	47.81
100.0	050.0000	0121.3	048.2	312.9	009.9434	0110.2	068.4	47.97
101.0	050.0000	0121.0	048.1	312.3	010.0335	0110.2	068.0	48.13
102.0	050.0000	0121.2	048.2	311.7	010.1215	0110.2	067.5	48.31
103.0	050.0000	0121.5	048.2	311.1	010.2112	0110.3	067.1	48.48
104.0	050.0000	0121.8	048.2	310.4	010.3035	0110.3	066.7	48.65
105.0	050.0000	0121.9	048.3	309.8	010.3948	0110.4	066.3	48.81
106.0	050.0000	0122.0	048.3	309.1	010.4763	0110.5	066.0	48.96
107.0	050.0000	0122.7	048.4	308.5	010.5563	0110.6	065.6	49.12
108.0	050.0000	0124.0	048.6	307.8	010.6354	0110.7	065.1	49.31
109.0	050.0000	0126.1	048.8	307.2	010.7137	0110.8	064.6	49.52
110.0	050.0000	0128.0	049.1	306.5	010.7957	0110.9	064.0	49.72
111.0	050.0000	0129.3	049.3	305.8	010.8834	0111.0	063.6	49.89
112.0	050.0000	0129.8	049.4	305.1	010.9761	0111.1	063.4	50.03
113.0	050.0000	0129.5	049.3	304.3	011.0738	0111.2	063.2	50.11
114.0	050.0000	0128.7	049.2	303.5	011.1733	0111.3	063.2	50.17
115.0	050.0000	0127.8	049.1	302.8	011.2733	0111.4	063.2	50.21
116.0	050.0000	0127.4	049.0	302.0	011.3728	0111.4	063.2	50.26
117.0	050.0000	0127.2	049.0	301.2	011.4724	0111.4	063.1	50.31
118.0	050.0000	0127.1	049.0	300.4	011.5725	0111.4	063.1	50.36
119.0	050.0000	0127.0	049.0	299.7	011.7231	0111.3	063.1	50.41
120.0	050.0000	0126.9	049.0	298.9	011.9365	0111.0	063.1	50.46
121.0	050.0000	0127.0	049.0	298.1	012.1518	0110.8	063.1	50.52
122.0	050.0000	0127.5	049.1	297.3	012.3699	0110.6	063.1	50.59
123.0	050.0000	0128.3	049.2	296.5	012.5920	0110.5	063.1	50.67
124.0	050.0000	0129.5	049.3	295.7	012.8184	0110.5	063.1	50.76
125.0	050.0000	0130.4	049.5	295.0	013.0461	0110.6	063.1	50.84
126.0	050.0000	0130.6	049.5	294.2	013.2702	0110.8	063.2	50.87
127.0	050.0000	0130.1	049.4	293.4	013.4883	0111.0	063.5	50.87
128.0	050.0000	0129.5	049.3	292.7	013.7034	0111.2	063.8	50.85
129.0	050.0000	0129.1	049.3	292.0	013.9194	0111.4	064.1	50.84
130.0	050.0000	0129.2	049.3	291.2	014.1379	0111.7	064.4	50.83
131.0	050.0000	0129.6	049.3	290.5	014.3599	0112.0	064.6	50.84
132.0	050.0000	0130.3	049.5	289.8	014.6273	0112.3	064.8	50.87
133.0	050.0000	0131.1	049.6	289.0	014.9864	0112.6	065.1	50.92
134.0	050.0000	0131.8	049.7	288.3	015.3414	0113.0	065.4	50.95
135.0	050.0000	0132.2	049.7	287.6	015.6900	0113.4	065.7	50.97
136.0	050.0000	0132.4	049.8	286.9	016.0268	0113.9	066.1	50.96
137.0	050.0000	0132.2	049.7	286.3	016.3501	0114.4	066.6	50.93
138.0	050.0000	0131.7	049.7	285.7	016.6560	0114.9	067.1	50.87
139.0	050.0000	0131.0	049.6	285.1	016.9494	0115.2	067.6	50.79
140.0	050.0000	0130.3	049.5	284.6	017.2342	0115.5	068.2	50.70
141.0	050.0000	0129.9	049.4	284.0	017.5255	0115.7	068.8	50.61
142.0	050.0000	0129.8	049.4	283.5	017.8204	0115.9	069.3	50.53

Azimuth (degrees)	ERP (kW)	HAAT (m)	Dist (km)	Azimuth (degrees)	ERP (kW)	HAAT (m)	Dist (km)	Actual (dBu)
143.0	050.0000	0129.8	049.4	282.9	018.1098	0116.0	069.9	50.43
144.0	050.0000	0129.4	049.3	282.4	018.3801	0116.0	070.5	50.31
145.0	050.0000	0128.7	049.2	282.0	018.6251	0116.0	071.1	50.17
146.0	050.0000	0127.8	049.1	281.6	018.8553	0116.0	071.8	50.01
147.0	050.0000	0127.4	049.0	281.1	019.1017	0116.0	072.5	49.88
148.0	050.0000	0128.3	049.2	280.6	019.3939	0116.1	073.0	49.78
149.0	050.0000	0129.8	049.4	280.0	019.7149	0116.1	073.5	49.71
150.0	050.0000	0131.3	049.6	279.5	020.2765	0116.2	074.1	49.67
151.0	049.7004	0132.5	049.7	279.0	020.7797	0116.2	074.7	49.60
152.0	049.4018	0133.5	049.8	278.5	021.2581	0116.3	075.3	49.51
153.0	049.1040	0134.4	049.9	278.1	021.7081	0116.3	076.0	49.41
154.0	048.8072	0135.0	049.9	277.7	022.1220	0116.3	076.7	49.28
155.0	048.5113	0135.3	049.9	277.4	022.4953	0116.4	077.4	49.14
156.0	048.2162	0135.4	049.9	277.1	022.8313	0116.4	078.2	48.98
157.0	047.9221	0135.3	049.8	276.8	023.1255	0116.4	079.0	48.81
158.0	047.6288	0134.9	049.7	276.6	023.3812	0116.4	079.8	48.62
159.0	047.3365	0134.3	049.5	276.4	023.6028	0116.5	080.6	48.43
160.0	047.0450	0133.5	049.4	276.2	023.7837	0116.5	081.5	48.21
161.0	046.0800	0132.5	049.0	276.2	023.8353	0116.5	082.4	47.96
162.0	045.1250	0131.5	048.7	276.1	023.8646	0116.5	083.3	47.70
163.0	044.1800	0130.4	048.3	276.1	023.8774	0116.5	084.2	47.44
164.0	043.2450	0129.4	048.0	276.1	023.8770	0116.5	085.1	47.18
165.0	042.3200	0128.3	047.7	276.1	023.8633	0116.5	086.0	46.92
166.0	041.4050	0127.6	047.4	276.1	023.8696	0116.5	086.9	46.68
167.0	040.5000	0127.2	047.1	276.1	023.8886	0116.5	087.8	46.44
168.0	039.6050	0126.6	046.8	276.1	023.8818	0116.5	088.6	46.19
169.0	038.7200	0126.5	046.6	276.1	023.8998	0116.5	089.5	45.96
170.0	037.8450	0126.4	046.4	276.1	023.9131	0116.5	090.3	45.73
171.0	036.7224	0125.8	046.1	276.2	023.8299	0116.5	091.2	45.48
172.0	035.6168	0125.2	045.7	276.3	023.7335	0116.5	092.1	45.22
173.0	034.5281	0124.1	045.3	276.4	023.5714	0116.5	092.9	44.96
174.0	033.4562	0123.2	044.9	276.5	023.4322	0116.4	093.8	44.70
175.0	032.4013	0122.8	044.6	276.6	023.3194	0116.4	094.6	44.46
176.0	031.3632	0122.2	044.2	276.8	023.1767	0116.4	095.4	44.22
177.0	030.3420	0121.4	043.8	276.9	023.0196	0116.4	096.3	43.98
178.0	029.3378	0120.7	043.5	277.0	022.8544	0116.4	097.1	43.74