

**Channel Study**

Chadwick Bay Broadcasting Corporation

REFERENCE CH# 235D - 94.9 MHz, Pwr= 0.2 kW DA, HAAT= 0.0 M, COR= 543 M DISPLAY DATES  
42 22 02.0 N. Average Protected F(50-50)= 6.7 km DATA 09-04-13  
79 23 12.0 W. Standard Directional SEARCH 09-24-13

CH CITY	CALL	TYPE	ANT STATE	AZI. <--	DIST FILE #	LAT. LNG.	Pwr(kW) HAAT(M)	INT(km) COR(M)	PRO(km) LICENSEE	*IN* (Overlap in km)	*OUT*
235D Dunkirk	W235BP	LIC	DV NY	0.0 0.0	0.00 BLFT20121210ABT	42 22 02.0 79 23 12.0	0.200	6.6 543	1.0 Chadwick Bay Broadcasting	-15.0*	-29.7*
233B Buffalo	WNED-FM	LIC	C NY	59.1 239.5	59.01 BLED20121220AAP	42 38 14.9 78 46 06.9	96.000 221	8.5 570	78.6 Western New York Public Br	36.3	-21.2*<
235B Oshawa	CKGE-FM	OP	HN ON	14.7 195.1	182.47 3861	43 57 15.0 78 48 23.0	50.000 148	181.5 323	72.9 Ckge-fm	-7.0<	70.6
237C1 Hamilton	CING-FM	OP	HN ON	341.4 161.2	98.56 3875	43 12 27.0 79 46 27.0	100.000 305	9.3 455	82.4 Cing-fm	79.6	13.1
235A Port Allegany	WHKS	LIC	CX PA	126.6 307.2	103.36 BMLH20020312AAF	41 48 36.0 78 23 10.0	1.150 231	82.7 792	29.4 L-com Inc.	13.4	49.9
237A Celoron	WLKW-FM	LIC	NCX NY	158.5 338.6	32.36 BLH20111129DUV	42 05 46.0 79 14 35.0	2.500 10	1.6 466	12.7 Cross Country Communicatio	25.6	19.6
234A Erie	WXBB	LIC	C PA	237.3 56.9	66.95 BLH19991029AEL	42 02 26.0 80 04 05.0	1.700 187	37.3 533	24.8 Connoisseur Media Licenses	24.2	34.4
235D Bowmansville	W235BC	LIC	C NY	35.5 215.9	87.08 BLFT20130422ACU	43 00 12.0 78 45 56.0	0.027	22.1 266	6.6 Calvary Chapel Of The Fing	51.3	34.8
234C1 Hamilton/burlington	CHKX-FM	OP	DHN ON	343.4 163.1	97.28 6636	43 12 21.0 79 43 49.0	100.000 140	48.7 279	41.8 Chkx-fm	39.1	35.4<
289B St Catharines	CHRE-FM	OP	HN ON	7.1 187.2	81.86 3924	43 05 55.0 79 15 45.0	50.000 120	0.0 272	0.0 Chre-fm	15.5R	66.4M

-----  
Terrain database is NGDC 30 SEC, R= 73.215 qualifying spacings or FCC minimum spacings in KM, M= Margin in  
KM  
Contour distances are on direct line to and from reference station. Reference Zone= East Zone, Co to 3rd  
adjacent.  
All separation margins (if shown) include rounding  
Ant Column: (D= DA Standard, Z= DA 73.215, N= Not DA 73.215, \_= Omni), Polarization (C,H,V,E),  
Beamtilt(Y,N,X)  
\*\*\*affixed to 'IN' or 'OUT' values = site inside protected contour.  
< = Station meets FCC minimum distance spacing for its class.  
< = Contour Overlap

**Exhibit 13A W235BP DUNKIRK, NY  
REQUEST FOR WAIVER OF 2nd ADJACENT OVERLAP**

**This application for permission to modify translator W235BP, Dunkirk, NY, is accompanied by this request for a waiver of the overlap rules. According to 47 CFR 74.1204d, a translator may overlap an existing station if there is a “lack of population in that overlap area”. In performing the interference study, it was determined that this proposal would overlap one facility, WNED-FM, Channel 233B, Buffalo, NY. Since the proposed facility is 400khz from WNED-FM, normally the 94dbu contour would be considered the interfering contour to this facility. It has been determined that the signal level from WNED-FM at this proposed site is 62.8dbu. In order for actual interference to occur, the interfering signal must be 40dbu greater than the protected signal. The interfering signal then would become the 102.8dbu contour. Taking into account the Scala CA5CP single bay antenna and the vertical elevation data, it has been determined that the interfering contour extends a maximum distance of 718 meters from the antenna. Exhibit 13-A2 demonstrates the 102.8dbu interfering contour on Google Earth.**

**As seen in exhibit 13-A2 it has been determined that no population is within this contour. This proposed facility is located in a remote area with no homes or buildings within the 102.8dbu distances. There is no population in this area, therefore no actual interference will be created to any population.**

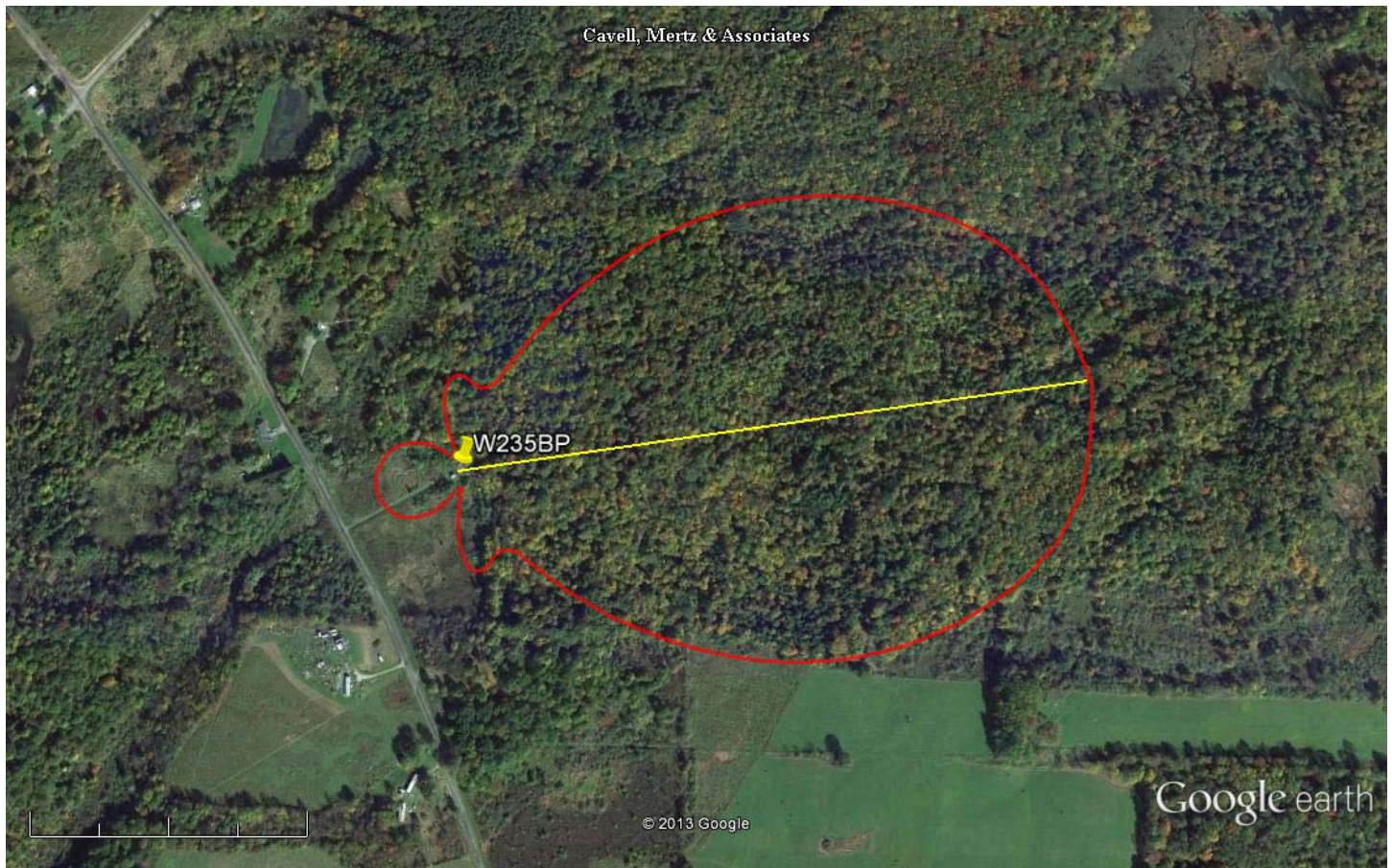
**It is therefore the conclusion of Chadwick Bay Broadcasting that this request for a waiver and minor modification of a licensed facility is within the guidelines of the FCC rules.**

EXHIBIT 13 - A1  
74.1204(d) Showing  
W235BP  
Dunkirk, NY

ERP (kw): 0.2  
Height of Antenna above Ground (m): 88  
Translator's IX Contour: 102.8  
Antenna Type: Scala CA5-CP

<u>Depression Angle from Horizon</u>	<u>Antenna Relative Field</u>	<u>ERP (kw) from the Antenna RF</u>	<u>Dist. To IX Contour (m)</u>	<u>Height IX Contour Above Ground (m)</u>
0	1.000	0.2000	718.6460	88.000
5	0.982	0.1930	705.9259	26.475
10	0.952	0.1814	684.3666	-30.839
15	0.915	0.1673	657.3455	-82.134
20	0.866	0.1500	622.3474	-124.855
25	0.796	0.1267	572.0422	-153.755
30	0.718	0.1032	516.2034	-170.102
35	0.628	0.0790	451.5253	-170.984
40	0.528	0.0558	379.6607	-156.041
45	0.423	0.0358	304.2028	-127.104
50	0.329	0.0217	236.6501	-93.285
55	0.246	0.0121	177.0025	-56.992
60	0.190	0.0072	136.5427	-30.249
65	0.142	0.0040	101.8321	-4.291
70	0.131	0.0035	94.4301	-0.735
75	0.132	0.0035	94.5019	-3.282
80	0.142	0.0040	101.8321	-12.285
85	0.150	0.0045	107.7969	-19.387
90	0.157	0.0049	113.0430	-25.043

Exhibit 13-A2



Google earth

feet  
meters

2000

700



NAD 27

42 22' 02.0" N

79 23' 12.0" W

Yellow Pin Marker: W235BP Transmit Site

Red Contour: 102.8dbu(F50-10) interfering contour

Yellow Marker: 718m @ 80 degrees true north