

## **Non-Interference Compliance**

Regarding Facility id 145074

Channel 227

### **Description of Exhibit 12 Contents**

This exhibit demonstrates that the proposed facility complies with contour overlap and interference protection provisions in all of the applicable rule sections and that this application for a construction permit is in full compliance with 47 C.F.R. § 74.1204.

**Let it be noted that should any actual real world interference occur, the applicant acknowledges that it will promptly suspend operation of this translator in accordance with 47 C.F.R. § 74.1203.**

Page 2 of this exhibit is an explanation of the method used to demonstrate compliance with contour overlap and interference provisions based on 47 C.F.R. § 74.1204(d), which states:

*[A]n application otherwise precluded by this section will be accepted if it can be demonstrated that no actual interference will occur due to intervening terrain, lack of population or such other factors as may be applicable.*

Page 3 contains a tabulation of the vertical radiation pattern of the proposed antenna and the minimum ground clearance of the interfering contour based on this pattern.

Pages 4 through 6 include a plot and a tabulation of the vertical radiation pattern for the proposed antenna provided by the antenna manufacturer.

Page 7 of this exhibit contains the tabulated data from the interference analysis, which shows all stations whose protected contours come within 50 km of the 34 dBμ F(50,10) contour of the proposed translator. These tabulated values were calculated using data from the FCC's CDBS files and 30 arc second terrain data. The column labeled "Adj" shows the number of channels difference between the entry and the proposed translator. The column labeled "Dist" shows the distance in km. The column labeled "Overlap" shows the area of contour overlap in square kilometers.

Page 8 of this exhibit is a portion of a USGS 1:24,000 scale 7.5 minute quadrangle at full scale with the calculated area of interference overlaid. The sheet includes the quadrangle name and measurement scale at the bottom-left corner (note: "Mt" refers to meters). The area of interference was calculated using the free space equation and 120 radials.

### Compliance with 47 C.F.R. § 74.1204(d)

All authorized second and third adjacent stations with which the proposed translator has contour overlap are tabulated below. Column four show the station's signal level at the proposed translator's tower site, and column five gives the minimum value within the entire standard interfering contour of the proposed translator (100 dBμ for most classes, 94 for class B, 97 for class B1). The minimum second or third adjacent F(50,50) contour within the proposed translator's standard interfering contour was used to calculate the proposed translator's actual "worst-case" interfering contour.

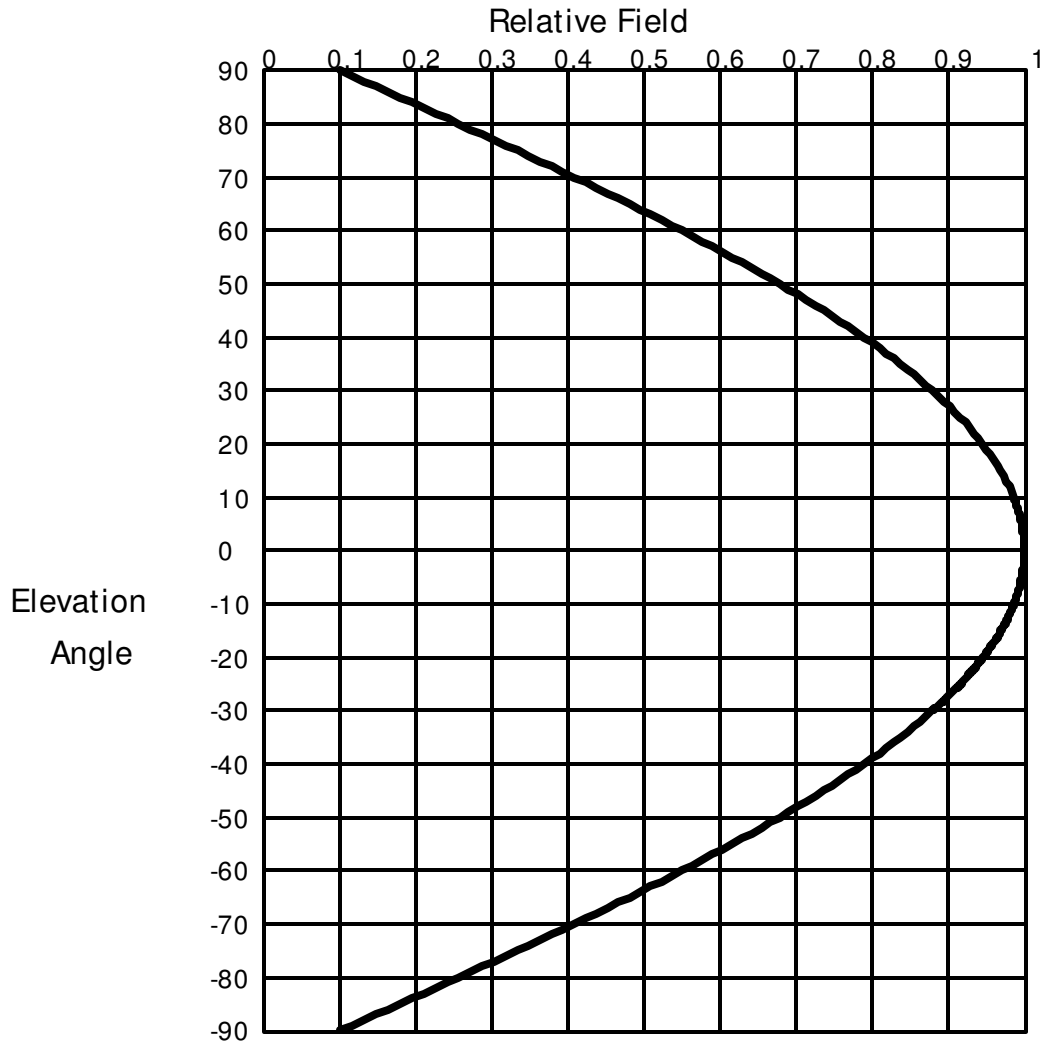
<b>Application_id</b>	<b>File Number</b>	<b>Callsign</b>	<b>Contour at Tower</b>	<b>Min. Contour</b>
165995	BLH19911021KD	WGYL	69.9	69.8
271067	BLH19980717KC	WAVW	99.6	98.9
Minimum F(50,50) Contour of Adjacent Station within Proposed Translator's Standard Interfering Contour				<b>69.8</b>

FCC 02-244 at Section II.A.5 states that "when demonstrating that 'no actual interference will occur due to . . . other factors,' pursuant to Section 74.1204(d), an applicant may use the undesired-to-desired signal ratio method." The undesired-to-desired ratio for second and third adjacent stations required by § 74.1204(a) is 40 dB. Since the minimum protected contour strength within the proposed translator's standard interference contour is **69.8 dBμ**, this makes the proposed translator's worst-case interfering contour **109.8 dBμ**. By the free-space equation, this contour is calculated to extend a maximum of **81.8 m** from the transmit antenna.

The maximum horizontal plane of the interfering contour was calculated for 120 radials and plotted on the pertinent portion of a USGS quadrangle (page 8 of this exhibit). However, the field strength of the proposed translator's antenna varies with angle of depression from horizontal. The antenna relative fields are tabulated on the following page at 5 degree increments, starting at 5 degrees below horizontal. Antenna relative field strength data was provided and certified by the manufacturer of the proposed antenna. Using a free-space calculation that neglects any loss due to reflection, the vertical ground clearance of the proposed translator's interference contour has been tabulated. As shown on the following page, the area of interference clears the tower ground level (TGL) by **88.4 m** at the lowest point. The applicant has taken into account USGS quadrangles and relevant aerial photography in stating that no structures, except possibly tower support structures, puncture the area of interference. Hence, in accordance with 47 C.F.R. § 74.1204(d) and the clarification provided by the FCC in the decision *Re: Living Way Ministries* (FCC 02-244), a lack of population has been demonstrated within the area of interference and this application is therefore in full compliance with 47 C.F.R. § 74.1204.

<b>Antenna Manufacturer:</b>	<b>SWR</b>
<b>Antenna Model:</b>	<b>FM1</b>
<b>CORAGL:</b>	<b>131 m</b>
<b>Maximum ERP:</b>	<b>0.013 kW</b>
<b>Interfering Contour:</b>	<b>109.8 dBμ</b>
<b>Max Int. Contour Distance:</b>	<b>81.8 m</b>
<b>Min Ground Clearance:</b>	<b>88.4 m</b>

Depression Angle Below Horizontal	Antenna Relative Field	ERP (watts)	Distance to Interfering Contour from Antenna (m)	Horizontal Distance of Interfering Contour from Tower (m)	Vertical Clearance of Interfering Contour above TGL (m)
5	.997	12.9	81.6	81.3	123.9
10	.986	12.6	80.7	79.5	117.0
15	.969	12.2	79.3	76.6	110.5
20	.946	11.6	77.4	72.8	104.5
25	.916	10.9	75.0	67.9	99.3
30	.879	10.0	71.9	62.3	95.0
35	.837	9.1	68.5	56.1	91.7
40	.789	8.1	64.6	49.5	89.5
45	.736	7.0	60.2	42.6	88.4
50	.679	6.0	55.6	35.7	88.4
55	.616	4.9	50.4	28.9	89.7
60	.550	3.9	45.0	22.5	92.0
65	.480	3.0	39.3	16.6	95.4
70	.408	2.2	33.4	11.4	99.6
75	.333	1.4	27.3	7.1	104.7
80	.256	0.9	21.0	3.6	110.4
85	.178	0.4	14.6	1.3	116.5
90	.100	0.1	8.2	0.0	122.8
Minimum Clearance above TGL:					<b>88.4 m</b>



## Elevation Pattern

Scale: Linear

Systems With Reliability Inc.

Units: Field, Relative

CLIENT: *General*

Date: 11/10/03

ANTENNA TYPE: FM1/1

FREQUENCY: 98.1

PATTERN POL.: Circular

DIRECTIVITY(Peak): 0.883/ -0.539 dBd

Beam Tilt (Deg.) : 0

DIRECTIVITY(Horiz): 0.883/ -0.539 dBd

Null Fill(s)(%) : 0, 0, 0

# Relative Field Tabulation

Elev. Angle	Rel. Fld(dB)	Elev. Angle	Rel. Fld(dB)	Elev. Angle	Rel. Fld(dB)
3.2	.999 (-0.012)	-4.4	.997 (-0.023)	-12.0	.98 (-0.173 )
3.0	.999 (-0.011)	-4.6	.997 (-0.025)	-12.2	.98 (-0.178 )
2.8	.999 (-0.009)	-4.8	.997 (-0.027)	-12.4	.979 (-0.184 )
2.6	.999 (-0.008)	-5.0	.997 (-0.03)	-12.6	.978 (-0.19 )
2.4	.999 (-0.007)	-5.2	.996 (-0.032)	-12.8	.978 (-0.196 )
2.2	.999 (-0.006)	-5.4	.996 (-0.035)	-13.0	.977 (-0.203 )
2.0	.999 (-0.005)	-5.6	.996 (-0.037)	-13.2	.976 (-0.209 )
1.8	1.00 (-0.004)	-5.8	.995 (-0.04)	-13.4	.975 (-0.215 )
1.6	1.00 (-0.003)	-6.0	.995 (-0.043)	-13.6	.975 (-0.222 )
1.4	1.00 (-0.002)	-6.2	.995 (-0.046)	-13.8	.974 (-0.229 )
1.2	1.00 (-0.002)	-6.4	.994 (-0.049)	-14.0	.973 (-0.235 )
1.0	1.00 (-0.001)	-6.6	.994 (-0.052)	-14.2	.973 (-0.242 )
.8	1.00 (-0.001)	-6.8	.994 (-0.055)	-14.4	.972 (-0.249 )
.6	1.00 (0)	-7.0	.993 (-0.058)	-14.6	.971 (-0.256 )
.4	1.00 (0)	-7.2	.993 (-0.062)	-14.8	.97 (-0.263 )
.2	1.00 (0)	-7.4	.993 (-0.065)	-15.0	.969 (-0.271 )
.0	1.00 (0)	-7.6	.992 (-0.069)	-15.2	.969 (-0.278 )
-.2	1.00 (0)	-7.8	.992 (-0.073)	-15.4	.968 (-0.285 )
-.4	1.00 (0)	-8.0	.991 (-0.076)	-15.6	.967 (-0.293 )
-.6	1.00 (0)	-8.2	.991 (-0.08)	-15.8	.966 (-0.3 )
-.8	1.00 (-0.001)	-8.4	.99 (-0.084)	-16.0	.965 (-0.308 )
-1.0	1.00 (-0.001)	-8.6	.99 (-0.088)	-16.2	.964 (-0.316 )
-1.2	1.00 (-0.002)	-8.8	.989 (-0.093)	-16.4	.963 (-0.324 )
-1.4	1.00 (-0.002)	-9.0	.989 (-0.097)	-16.6	.962 (-0.332 )
-1.6	1.00 (-0.003)	-9.2	.988 (-0.101)	-16.8	.962 (-0.34 )
-1.8	1.00 (-0.004)	-9.4	.988 (-0.106)	-17.0	.961 (-0.348 )
-2.0	.999 (-0.005)	-9.6	.987 (-0.11)	-17.2	.96 (-0.357 )
-2.2	.999 (-0.006)	-9.8	.987 (-0.115)	-17.4	.959 (-0.365 )
-2.4	.999 (-0.007)	-10.0	.986 (-0.12)	-17.6	.958 (-0.374 )
-2.6	.999 (-0.008)	-10.2	.986 (-0.124)	-17.8	.957 (-0.383 )
-2.8	.999 (-0.009)	-10.4	.985 (-0.129)	-18.0	.956 (-0.391 )
-3.0	.999 (-0.011)	-10.6	.985 (-0.134)	-18.2	.955 (-0.4 )
-3.2	.999 (-0.012)	-10.8	.984 (-0.14)	-18.4	.954 (-0.409 )
-3.4	.998 (-0.014)	-11.0	.983 (-0.145)	-18.6	.953 (-0.418 )
-3.6	.998 (-0.015)	-11.2	.983 (-0.15)	-18.8	.952 (-0.427 )
-3.8	.998 (-0.017)	-11.4	.982 (-0.156)	-19.0	.951 (-0.437 )
-4.0	.998 (-0.019)	-11.6	.982 (-0.161)	-19.2	.95 (-0.446 )
-4.2	.998 (-0.021)	-11.8	.981 (-0.167)	-19.4	.949 (-0.456 )

Systems With Reliability Inc.

Page 1 of 2

CLIENT: *General*

Date: 11/10/03

ANTENNA TYPE: FM1/1

FREQUENCY: 98.1

PATTERN POL.: Circular

DIRECTIVITY(Peak): 0.883/ -0.539 dBd

Beam Tilt (Deg.) : 0

DIRECTIVITY(Horiz): 0.883/ -0.539 dBd

Null Fill(s)(%) : 0, 0, 0

# Relative Field Tabulation

Elev. Angle	Rel. Fld(dB)	Elev. Angle	Rel. Fld(dB)	Elev. Angle	Rel. Fld(dB)
-19.6	.948 (-0.465)	-27.2	.90 (-0.911)	-54.0	.629 (-4.027 )
-19.8	.947 (-0.475)	-27.4	.899 (-0.924)	-55.0	.616 (-4.205 )
-20.0	.946 (-0.485)	-27.6	.898 (-0.939)	-56.0	.603 (-4.39 )
-20.2	.945 (-0.495)	-27.8	.896 (-0.953)	-57.0	.59 (-4.58 )
-20.4	.944 (-0.505)	-28.0	.895 (-0.967)	-58.0	.577 (-4.778 )
-20.6	.942 (-0.515)	-28.2	.893 (-0.981)	-59.0	.564 (-4.982 )
-20.8	.941 (-0.525)	-28.4	.892 (-0.996)	-60.0	.55 (-5.193 )
-21.0	.94 (-0.535)	-28.6	.89 (-1.01)	-61.0	.536 (-5.411 )
-21.2	.939 (-0.546)	-28.8	.889 (-1.025)	-62.0	.523 (-5.638 )
-21.4	.938 (-0.556)	-29.0	.887 (-1.04)	-63.0	.509 (-5.873 )
-21.6	.937 (-0.567)	-29.2	.886 (-1.055)	-64.0	.495 (-6.116 )
-21.8	.936 (-0.578)	-29.4	.884 (-1.07)	-65.0	.48 (-6.369 )
-22.0	.934 (-0.589)	-29.6	.883 (-1.085)	-66.0	.466 (-6.631 )
-22.2	.933 (-0.6)	-29.8	.881 (-1.101)	-67.0	.452 (-6.904 )
-22.4	.932 (-0.611)	-30.0	.879 (-1.116)	-68.0	.437 (-7.187 )
-22.6	.931 (-0.622)	-31.0	.871 (-1.195)	-69.0	.423 (-7.483 )
-22.8	.93 (-0.633)	-32.0	.863 (-1.277)	-70.0	.408 (-7.791 )
-23.0	.928 (-0.645)	-33.0	.855 (-1.363)	-71.0	.393 (-8.112 )
-23.2	.927 (-0.656)	-34.0	.846 (-1.451)	-72.0	.378 (-8.448 )
-23.4	.926 (-0.668)	-35.0	.837 (-1.543)	-73.0	.363 (-8.799 )
-23.6	.925 (-0.68)	-36.0	.828 (-1.638)	-74.0	.348 (-9.167 )
-23.8	.923 (-0.692)	-37.0	.819 (-1.737)	-75.0	.333 (-9.553 )
-24.0	.922 (-0.704)	-38.0	.809 (-1.839)	-76.0	.318 (-9.959 )
-24.2	.921 (-0.716)	-39.0	.799 (-1.944)	-77.0	.302 (-10.387 )
-24.4	.92 (-0.728)	-40.0	.789 (-2.054)	-78.0	.287 (-10.839 )
-24.6	.918 (-0.74)	-41.0	.779 (-2.167)	-79.0	.272 (-11.317 )
-24.8	.917 (-0.753)	-42.0	.769 (-2.283)	-80.0	.256 (-11.826 )
-25.0	.916 (-0.765)	-43.0	.758 (-2.404)	-81.0	.241 (-12.367 )
-25.2	.914 (-0.778)	-44.0	.747 (-2.529)	-82.0	.225 (-12.946 )
-25.4	.913 (-0.791)	-45.0	.736 (-2.658)	-83.0	.21 (-13.569 )
-25.6	.912 (-0.803)	-46.0	.725 (-2.791)	-84.0	.194 (-14.241 )
-25.8	.91 (-0.816)	-47.0	.714 (-2.928)	-85.0	.178 (-14.97 )
-26.0	.909 (-0.83)	-48.0	.702 (-3.071)	-86.0	.163 (-15.768 )
-26.2	.908 (-0.843)	-49.0	.69 (-3.217)	-87.0	.147 (-16.648 )
-26.4	.906 (-0.856)	-50.0	.679 (-3.369)	-88.0	.131 (-17.627 )
-26.6	.905 (-0.87)	-51.0	.666 (-3.525)	-89.0	.116 (-18.733 )
-26.8	.903 (-0.883)	-52.0	.654 (-3.687)	-90.0	.10 (-20 )
-27.0	.902 (-0.897)	-53.0	.642 (-3.854)	90.0	.00 (-50 )

Systems With Reliability Inc.

Page 2 of 2

CLIENT: *General*

Date: 11/10/03

ANTENNA TYPE: FM1/1

FREQUENCY: 98.1

PATTERN POL.: Circular

DIRECTIVITY(Peak): 0.883/ -0.539 dBd

Beam Tilt (Deg.) : 0

DIRECTIVITY(Horiz): 0.883/ -0.539 dBd

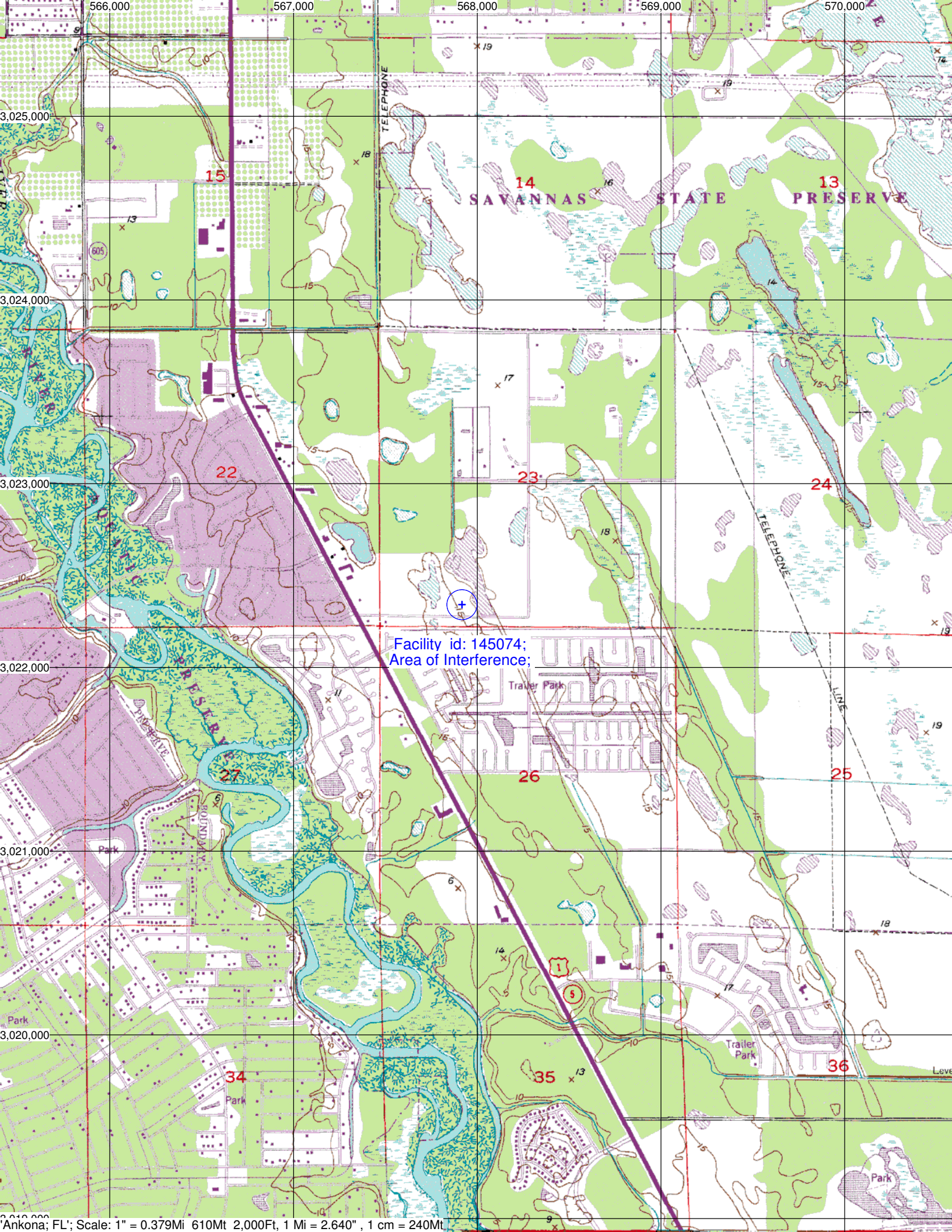
Null Fill(s)(%) : 0, 0, 0

# **Adjacent Channel Study** **For Station W227BT, Facility\_id: 145074**

## **Co-channel through third adjacent:**

Application_id	Facility_id	Prefix	ARN	Call	Licensee	Class	City	State	Status	ERP	RCAMSL	Channel	Adj	Dist	Overlap
271067	14376	BLH	19980717KC	WAVW	CAPSTAR ROYALTY I CORPORATION	C2	STUART	FL	LIC	50	148	224	3	6	0.0776
165995	58946	BLH	19911021KD	WGYL	SANDAB COMMUNICATIONS LTD. P/SHIP II	C2	VERO BEACH	FL	LIC	50	150	229	2	31.8	0.0776
637592	145078	BNPFT	20030317DIS	NEW	RADIO ASSIST MINISTRY, INC.	D	VERO BEACH SOUTH	FL	APP	0.01	146.4	227	0	31.8	0
651875	158272	BNPFT	20030317MOX	NEW	COMMUNITY RADIO FOUNDATION OF FLORIDA, INC.	D	SEBASTIAN	FL	APP	0.13	43	227	0	47.9	0
646308	153097	BNPFT	20030317BAI	NEW	R & L NON-COMM	D	PALM BEACH	FL	APP	0.01	148	228	1	62.9	0
635672	143464	BNPFT	20030313AHW	NEW	WAY-FM MEDIA GROUP, INC.	D	MAGNOLIA PARK	FL	APP	0.01	138	227	0	62.9	0
639014	146430	BNPFT	20030314ADY	NEW	NATIONAL CHRISTIAN NETWORK	D	WEST PALM BEACH	FL	APP	0.25	31	228	1	66.7	0
651677	158103	BNPFT	20030317MWC	NEW	CIRCUITWERKES, INC.	D	WEST PALM BEACH	FL	APP	0.25	35	225	2	73.5	0
270984	59661	BLH	19980715KD	WBGF	BGI BROADCASTING, L.P.	A	BELLE GLADE	FL	LIC	5	83	228	1	77.3	0
629902	139107	BNPFT	20030312ATC	NEW	CALVARY CHAPEL CHURCH, INC.	D	PALM SPRINGS	FL	APP	0.01	35	228	1	77.8	0
1131024	59661	BMPH	20050922ABK	WBGF	BGI BROADCASTING, L.P.	C3	BELLE GLADE	FL	CP MOD	15.5	132.3	228	1	82.2	0
630113	135636	BLL	20030324AAE	WGRZ-LP	BREVARD YOUTH EDUCATION BROADCASTING CO	L1	MELBOURNE	FL	LIC	0	49.24	226	1	88.2	0
1047786	51978	BLH	20050225AAH	WLVE	CLEAR CHANNEL BROADCASTING LICENSES, INC.	C0	MIAMI BEACH	FL	LIC	98	308	230	3	151.2	0
1047799	40408	BLH	20050224ABN	WHDR	COX RADIO-MIAMI, LLC	C0	MIAMI	FL	LIC	98	308	226	1	151.2	0





Facility id: 145074;  
Area of Interference;