

**Exhibit 10**  
**Ownership Structure and Other Media Interests**

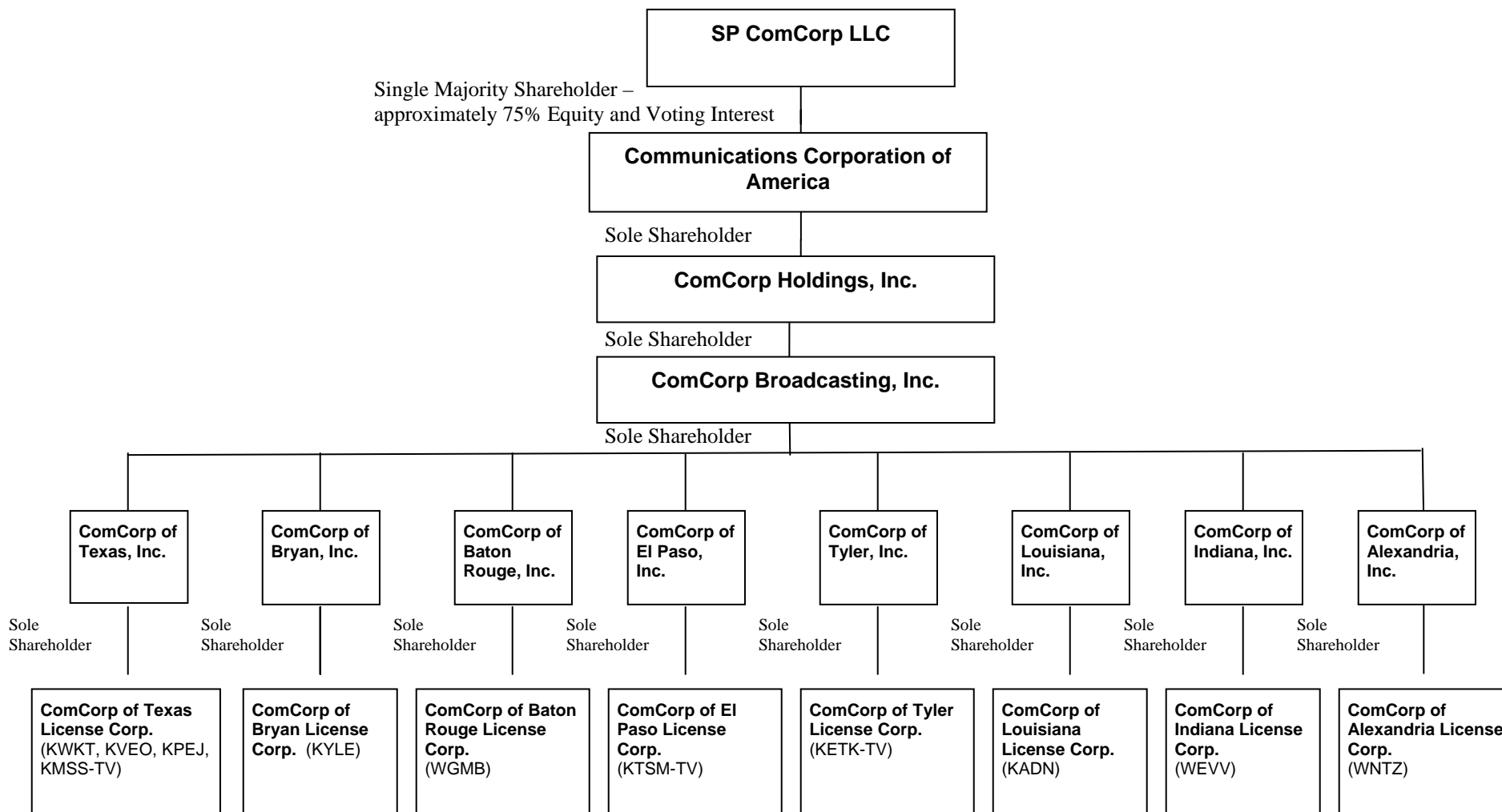
This and several simultaneously filed applications request FCC consent to the internal restructuring of Communications Corporation of America (“CCA”). As the attached diagrams reflect, CCA currently owns ComCorp Holdings, Inc., which in turn owns ComCorp Broadcasting, Inc. The proposed reorganization will result in CCA directly owning ComCorp Broadcasting, Inc. The proposed reorganization will not affect the ownership or control of CCA, and as such, it involves merely a *pro forma* transfer of control of FCC licenses.

<b><i>Current Licensee</i></b>	<b><i>Call Sign</i></b>	<b><i>Facility ID</i></b>	<b><i>Community of License</i></b>
ComCorp of Texas License Corp.	KMSS-TV	12525	Shreveport, LA
ComCorp of Texas License Corp.	KVEO(TV)	12523	Brownsville, TX
ComCorp of Baton Rouge License Corp.	WGMB(TV)	12520	Baton Rouge, LA
ComCorp of Baton Rouge License Corp.	WBRL-CA	24976	Baton Rouge, LA
ComCorp of Texas License Corp.	KWKT(TV)	12522	Waco, TX
ComCorp of Bryan License Corp.	KYLE(TV)	60384	Bryan, TX
ComCorp of El Paso License Corp.	KTSM-TV	67760	El Paso, TX
ComCorp of Indiana License Corp.	WEVV(TV)	72041	Evansville, IN
ComCorp of Tyler License Corp.	KETK-TV	55643	Jacksonville, TX
ComCorp of Louisiana License Corp.	KADN(TV)	33261	Lafayette, LA
ComCorp of Texas License Corp.	KPEJ(TV)	12524	Odessa, TX
ComCorp of Alexandria License Corp.	WNTZ(TV)	16539	Natchez, MS

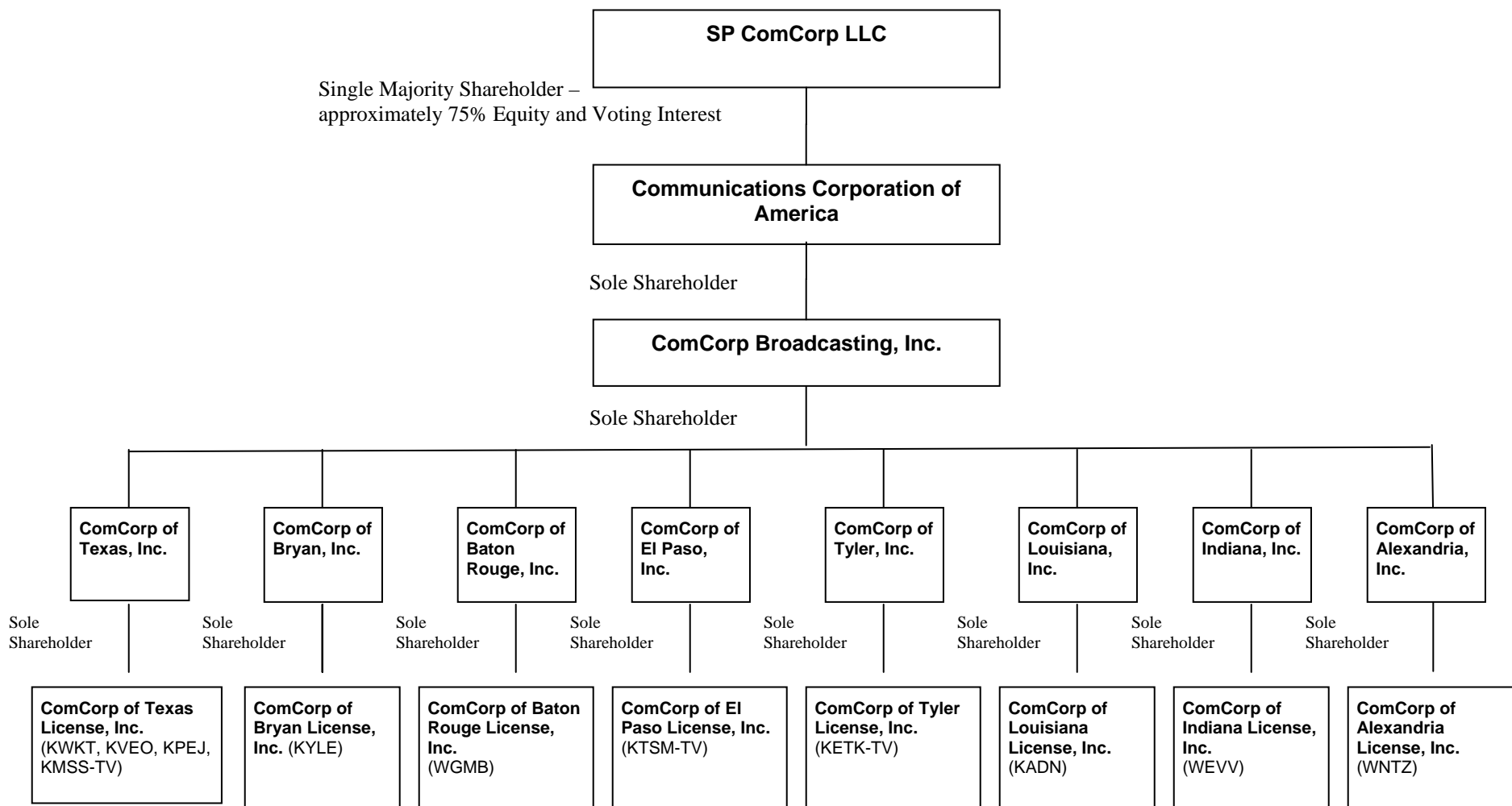
***Other Media Interests.*** The individuals and entities that own the Manager and Members of SP ComCorp and certain of the individuals who serve as Directors of SP ComCorp hold attributable ownership interests in SP Granite LLC, the single majority shareholder of Granite Broadcasting Corporation, which is the corporate parent of the television stations and licensees listed below:

<b><i>Licensee</i></b>	<b><i>Call Sign</i></b>	<b><i>Facility ID</i></b>	<b><i>Community of License</i></b>
WXON License, Inc.	WMYD(TV)	74211	Detroit, MI
WBNG License, Inc.	WBNG-TV	23337	Binghamton, NY
KBWB License, Inc.	KBWB(TV)	51189	San Francisco, CA
KBJR License, Inc.	KBJR-TV	33658	Superior, WI
Channel 11 License, Inc.	KRII(TV)	82698	Chisholm, MN
WEEK-TV License, Inc.	WEEK-TV	24801	Peoria, IL
KSEE License, Inc.	KSEE(TV)	35594	Fresno, CA
WISE-TV License, LLC	WISE-TV	13960	Fort Wayne, IN
WKBW-TV License, Inc.	WKBW-TV	54176	Buffalo, NY
WTVH License, Inc.	WTVH(TV)	74151	Syracuse, NY

**PRE-REORGANIZATION OWNERSHIP CHART**



**POST-REORGANIZATION OWNERSHIP CHART**



**Ownership Structure of each ComCorp license subsidiary**

<b>Name &amp; Address</b>	<b>Gender</b>	<b>Ethnicity &amp; Race</b>	<b>Citizenship</b>	<b>Positional Interest</b>	<b>Percentage of Votes</b>	<b>Percentage of Total Assets</b>
[ComCorp license subsidiary] <sup>1</sup> P.O. Box 53708 Lafayette, LA 70505			U.S. (Delaware Corporation)	--	--	--
[ComCorp station operating subsidiary] <sup>2</sup> P.O. Box 53708 Lafayette, LA 70505			U.S. (Delaware Corporation )	Sole Shareholder	100%	100%
Steven J. Pruett P.O. Box 53708 Lafayette, LA 70505	Male	Not Hispanic or Latino  White	U.S.	Chief Executive Officer and Director	0%	0%
John Kneisley Two Greenwich Plaza Greenwich, CT 06830	Male	Not Hispanic or Latino  White	U.S.	Director	0%	0%
Peter Markham Two Greenwich Plaza Greenwich, CT 06830	Male	Not Hispanic or Latino  White	U.S.	Director	0%	0%
Greg Boulanger Two Greenwich Plaza Greenwich, CT 06830	Male	Not Hispanic or Latino  White	U.S.	Secretary	0%	0%

<sup>1</sup> ComCorp of Texas License, Inc.; ComCorp of Bryan License, Inc.; ComCorp of Baton Rouge License, Inc.; ComCorp of El Paso License, Inc.; ComCorp of Tyler License, Inc.; ComCorp of Louisiana License, Inc.; ComCorp of Indiana License, Inc.; and ComCorp of Alexandria License, Inc..

<sup>2</sup> ComCorp of Texas, Inc.; ComCorp of Bryan, Inc.; ComCorp of Baton Rouge, Inc.; ComCorp of El Paso, Inc.; ComCorp of Tyler, Inc.; ComCorp of Louisiana, Inc.; ComCorp of Indiana, Inc.; and ComCorp of Alexandria, Inc.

**Ownership Structure of each of ComCorp station operating subsidiary**

<b>Name &amp; Address</b>	<b>Gender</b>	<b>Ethnicity &amp; Race</b>	<b>Citizenship</b>	<b>Positional Interest</b>	<b>Percentage of Votes</b>	<b>Percentage of Total Assets</b>
[ComCorp station operating subsidiary] <sup>3</sup> P.O. Box 53708 Lafayette, LA 70505	--	--	U.S. (Delaware Corporation)	--	--	--
ComCorp Broadcasting, Inc. P.O. Box 53708 Lafayette, LA 70505	--	--	U.S. (Delaware Corporation )	Sole Shareholder	100%	100%
Steven J. Pruett P.O. Box 53708 Lafayette, LA 70505	Male	Not Hispanic or Latino  White	U.S.	Chief Executive Officer and Director	0%	0%
John Kneisley Two Greenwich Plaza Greenwich, CT 06830	Male	Not Hispanic or Latino  White	U.S.	Director	0%	0%
Peter Markham Two Greenwich Plaza Greenwich, CT 06830	Male	Not Hispanic or Latino  White	U.S.	Director	0%	0%
Greg Boulanger Two Greenwich Plaza Greenwich, CT 06830	Male	Not Hispanic or Latino  White	U.S.	Secretary	0%	0%

<sup>3</sup> ComCorp of Texas, Inc.; ComCorp of Bryan, Inc.; ComCorp of Baton Rouge, Inc.; ComCorp of El Paso, Inc.; ComCorp of Tyler, Inc.; ComCorp of Louisiana, Inc.; ComCorp of Indiana, Inc.; and ComCorp of Alexandria, Inc.

**Ownership Structure of ComCorp Broadcasting, Inc.**

<b>Name &amp; Address</b>	<b>Gender</b>	<b>Ethnicity &amp; Race</b>	<b>Citizenship</b>	<b>Positional Interest</b>	<b>Percentage of Votes</b>	<b>Percentage of Total Assets</b>
ComCorp Broadcasting, Inc. P.O. Box 53708 Lafayette, LA 70505	--	--	U.S. (Delaware Corporation)	--	--	--
Communications Corporation of America P.O. Box 53708 Lafayette, LA 70505	--	--	U.S. (Delaware Corporation)	Sole Shareholder	100%	100%
Steven J. Pruett P.O. Box 53708 Lafayette, LA 70505	Male	Not Hispanic or Latino  White	U.S.	Chief Executive Officer and Director	0%	0%
John Kneisley Two Greenwich Plaza Greenwich, CT 06830	Male	Not Hispanic or Latino  White	U.S.	Director	0%	0%
Peter Markham Two Greenwich Plaza Greenwich, CT 06830	Male	Not Hispanic or Latino  White	U.S.	Director	0%	0%
Greg Boulanger Two Greenwich Plaza Greenwich, CT 06830	Male	Not Hispanic or Latino  White	U.S.	Secretary	0%	0%

**Ownership Structure of Communications Corporation of America**

<b>Name &amp; Address</b>	<b>Gender</b>	<b>Ethnicity &amp; Race</b>	<b>Citizenship</b>	<b>Positional Interest</b>	<b>Percentage of Votes</b>	<b>Percentage of Total Assets</b>
Communications Corporation of America P.O. Box 53708 Lafayette, LA 70505	--	--	U.S. (Delaware Corp.)	Ultimate Parent of Licensees	--	--
Steven J. Pruett P.O. Box 53708 Lafayette, LA 70505	Male	Not Hispanic or Latino  White	U.S.	Chief Executive Officer and Director	0%	0%

Harry Wilson Two Greenwich Plaza Greenwich, CT 06830	Male	Not Hispanic or Latino  White	U.S.	Director	0%	0%
David L. Sawyer Two Greenwich Plaza Greenwich, CT 06830	Male	Not Hispanic or Latino  White	U.S.	Director	0%	0%
John Kneisley Two Greenwich Plaza Greenwich, CT 06830	Male	Not Hispanic or Latino  White	U.S.	Director	0%	0%
Peter Markham Two Greenwich Plaza Greenwich, CT 06830	Male	Not Hispanic or Latino  White	U.S.	Director	0%	0%
Zubin Jariwala Two Greenwich Plaza Greenwich, CT 06830	Male	Not Hispanic or Latino  Asian	U.S.	Director	0%	0%
Thomas Shen Two Greenwich Plaza Greenwich, CT 06830	Male	Not Hispanic or Latino  Asian	U.S.	Director	0%	0%
Greg Boulanger Two Greenwich Plaza Greenwich, CT 06830	Male	Not Hispanic or Latino  White	U.S.	Secretary	0%	0%
SP ComCorp LLC Two Greenwich Plaza Greenwich, CT 06830	--	--	U.S. (Delaware LLC)	Single Majority Shareholder	approx. 75%	approx. 75%



**Ownership Structure of SP ComCorp LLC**

<b>Name &amp; Address</b>	<b>Gender</b>	<b>Ethnicity &amp; Race</b>	<b>Citizenship</b>	<b>Positional Interest</b>	<b>Percentage of Votes</b>	<b>Percentage of Total Assets</b>
SP ComCorp LLC Two Greenwich Plaza Greenwich, CT 06830	--	--	U.S. (Delaware LLC)	---	---	---
SP ComCorp Investments LLC Two Greenwich Plaza Greenwich, CT 06830	--	--	U.S. (Delaware LLC)	Member and Manager	100%	Less than 1%
SP ComCorp Holdco 1 LLC Two Greenwich Plaza Greenwich, CT 06830	--	--	U.S. (Delaware LLC)	Member	0%	approx. 99%
SP ComCorp Holdco 2 LLC Two Greenwich Plaza Greenwich, CT 06830	--	--	U.S. (Delaware LLC)	Member	0%	approx. 1%
Edward Mulé Two Greenwich Plaza Greenwich, CT 06830	Male	Not Hispanic or Latino  White	U.S.	Director	0%	0%
Robert O'Shea Two Greenwich Plaza Greenwich, CT 06830	Male	Not Hispanic or Latino  White	U.S.	Director	0%	0%

**Ownership Structure of SP ComCorp Investments LLC**

<b>Name &amp; Address</b>	<b>Gender</b>	<b>Ethnicity &amp; Race</b>	<b>Citizenship</b>	<b>Positional Interest</b>	<b>Percentage of Votes</b>	<b>Percentage of Total Assets</b>
SP ComCorp Investments LLC Two Greenwich Plaza Greenwich, CT 06830	--	--	U.S. (Delaware LLC)	---	---	---
Edward Mulé Two Greenwich Plaza Greenwich, CT 06830	Male	Not Hispanic or Latino  White	U.S.	Member and Manager	50%	50%
Robert O'Shea Two Greenwich Plaza Greenwich, CT 06830	Male	Not Hispanic or Latino  White	U.S.	Member and Manager	50%	50%

**Ownership Structure of SP ComCorp Holdco 1 LLC\***

<b>Name &amp; Address</b>	<b>Gender</b>	<b>Ethnicity &amp; Race</b>	<b>Citizenship</b>	<b>Positional Interest</b>	<b>Percentage of Votes</b>	<b>Percentage of Total Assets</b>
SP ComCorp Holdco 1 LLC Two Greenwich Plaza Greenwich, CT 06830	--	--	U.S. (Delaware LLC)	---	---	---
Edward Mulé Two Greenwich Plaza Greenwich, CT 06830	Male	Not Hispanic or Latino  White	U.S.	Member and Manager	40%	Less than 1%
Robert O'Shea Two Greenwich Plaza Greenwich, CT 06830	Male	Not Hispanic or Latino  White	U.S.	Member and Manager	40%	Less than 1%

\* Insulated Members own approximately 100% of the Total Assets but have no voting interests in this entity.

**Ownership Structure of SP ComCorp Holdco 2 LLC\***

<b>Name &amp; Address</b>	<b>Gender</b>	<b>Ethnicity &amp; Race</b>	<b>Citizenship</b>	<b>Positional Interest</b>	<b>Percentage of Votes</b>	<b>Percentage of Total Assets</b>
SP ComCorp Holdco 2 LLC Two Greenwich Plaza Greenwich, CT 06830	--	--	U.S. (Delaware LLC)	---	---	---
Edward Mulé Two Greenwich Plaza Greenwich, CT 06830	Male	Not Hispanic or Latino  White	U.S.	Member and Manager	40%	Less than 1%
Robert O'Shea Two Greenwich Plaza Greenwich, CT 06830	Male	Not Hispanic or Latino  White	U.S.	Member and Manager	40%	Less than 1%

\* Insulated Members own approximately 100% of the Total Assets but have no voting interests in this entity.