

Educational Media Foundation

Exhibit 15

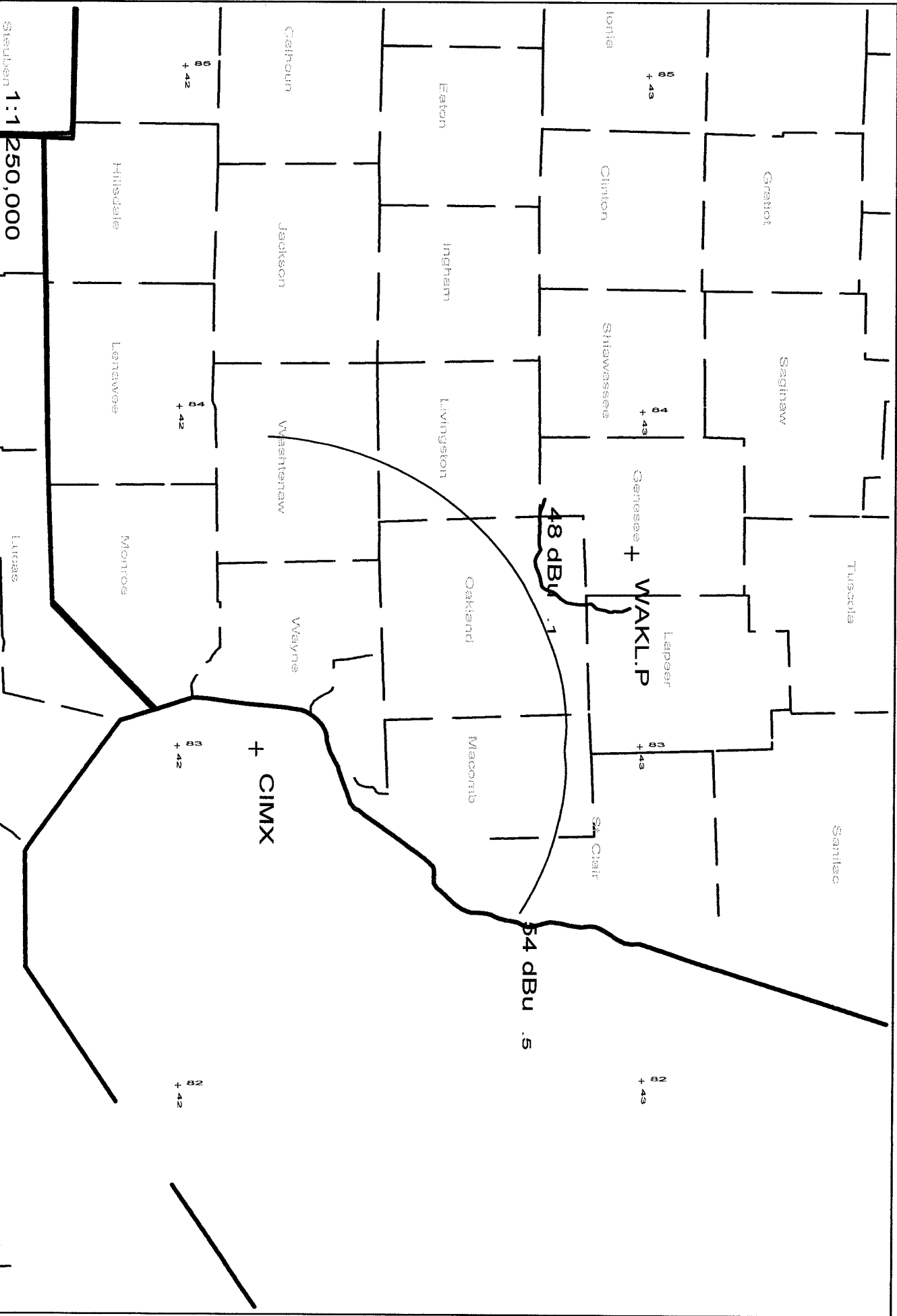
5700 West Oaks Boulevard ♦ Rocklin ♦ California ♦ 95765

Flint, MI

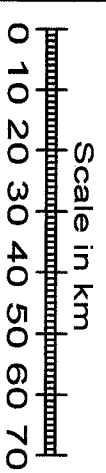
REFERENCE		CH# 205A - 88.9 MHz, Pwr= 0.38 kW, HAAT=80.2M, COR= 330 M								DISPLAY DATES	
42 58 49 N		Average Protected F(50-50)= 12.8 km								DATA	09-04-03
83 34 40 W		Ave. F(50-10) 40 dBu= 44.3 54 dBu= 19.0 80 dBu= 4.1 100 dBu= 1.4								SEARCH	10-08-03
CH CITY	CALL	TYPE STATE	AZI. <--	DIST FILE #	LAT. LNG.	Pwr(kW) HAAT(M)	COR(M) INT(km)	PRO(km) LICENSEE	*IN* (Overlap in km)	*OUT*	
205A Flint	WAKL	LIC DVN MI	223.8 43.8	6.12 BLED19970821KB	42 56 26 83 37 47	0.12 120	364 43.2	12.5 Educational Media Foundati	-46.42	-48.84*	
204C1 Windsor	CIMX	OPE HN ON	151.7 331.7	101.97	42 10 15 82 59 29	100 179	360 22.6	10.8	-24.94	4.00	
206A Imlay City	WHYT.A	APP DEX MI	108.4 288.4	29.43 BPED20030508ACX	42 53 47 83 14 09	0.393 100	404 10.7	7.4 Michigan Community Radio	0.28	4.32	
206B Bay City	ALLO	VAC MI	343.9 163.9	74.10	43 37 14 83 50 01	50 -177	0 21.8	14.5	14.29	25.77	
204A Taymouth Township	AP204	APP VX MI	331.4 151.4	35.05 BNPED19991206ABJ	43 15 25 83 47 05	0.25 32	249 21.7	14.4 Great Lakes Community Broa	10.16	6.04	
205A East Lansing	WDBM	LIC CN MI	247.6 67.6	79.44 BLED19890123KJ	42 42 20 84 28 30	2 82	349 45.8	13.2 Bd Of Trustee Of Michigan	0.09	13.71	
206A Imlay City	WHYT	LIC C MI	76.8 256.8	40.33 BLED20010108AAA	43 03 42 83 05 44	1.5 50	306 9.2	6.4 Michigan Community Radio	12.64	16.92	
206B1 Ypsilanti	WEMU	LIC DCN MI	182.6 2.6	81.58 BMLED19931220KA	42 14 48 83 37 21	4.693 17	278 14.7	10.6 Eastern Michigan Universit	48.96	52.07	
206A Warren	WPHS	LIC CN MI	137.8 317.8	69.38 BMLED19880126KB	42 31 00 83 00 36	0.1 28	225 14.6	10.5 Warren Consolidated School	50.86	49.10	
206A Bay City	WTRK	LIC CN MI	341.3 161.3	70.92 BLED19930810KA	43 35 04 83 51 36	2 99	278 21.8	14.5 Beyond The Bay Media Group	23.74	27.09	
207A Gaines	AP207	APP VX MI	239.7 59.7	30.28 BNPED20000218AAV	42 50 33 83 53 52	3.5 76	331 1.4	12.9 Pensacola Christian Colleg	15.21	6.90	
202A Auburn Hills	WXOU	LIC DCN MI	136.6 316.6	41.34 BLED19950808KA	42 42 35 83 13 50	0.11 49	360 1.2	10.3 Oakland University	30.28	32.81	
208A Auburn Heights	WAHS	LIC CN MI	144.1 324.1	48.24 BLED19811214AG	42 37 42 83 13 56	0.1 6	304 1.3	11.1 Avondale School District	36.47	41.31	
207A Marlette	WMSQ.C	CP C MI	40.8 220.8	57.13 BPED19981231MA	43 22 06 83 07 00	0.1 28	277 0.6	8.8 Great Lakes Community Broa	47.61	50.89	
208A Novi	WOVI	LIC CN MI	172.9 352.9	57.83 BLED19920206KA	42 27 49 83 29 28	0.1 11	295 1.4	11.2 Bd. Of Educ.novi Community	45.97	50.83	
207A Marlette	WMSQ.A	APP CX MI	46.1 226.1	61.07 BMPED20030508ACR	43 21 35 83 02 04	0.25 -43	214 0.5	8.2 Great Lakes Community Broa	51.73	53.45	
202A Southfield	WSHJ	LIC CN MI	155.6 335.6	62.24 BLED19900611KE	42 28 12 83 15 50	0.125 -22	232 1.4	11.0 The Bd. Of Educ. Of Southf	50.42	54.92	
205A Hillsdale	990728	APP VN MI	216.4 36.4	149.63 BPED19990728MD	41 53 35 84 39 05	1.4 71	416 41.6	12.0 Great Lakes Community Broa	79.19	91.15	
205A Oregon	AP205	APP VX OH	174.6 354.6	149.67 BNPED19991229ADU	41 38 19 83 24 34	0.37 87	258 38.3	11.2 Pensacola Christian Colleg	92.75	98.20	
203C3 Cass City	981231	APP DCN MI	30.3 210.3	83.23 BPED19981231MF	43 37 31 83 03 22	17.558 62	289 0.8	10.2 Broadcasting For The Chall	70.05	53.42	
208C1 Mount Pleasant	WCMUFM	LIC CN MI	304.7 124.7	117.25 BLED1085	43 34 24 84 46 21	100 145	371 1.4	14.3 Central Michigan Univ. Bd	95.93	58.03	
203A Mount Clemens	AP203	APP DVX MI	131.1 311.1	73.50 BNPED20000222AAP	42 32 39 82 54 09	0.033 71	259 1.0	9.2 Pensacola Christian Colleg	63.91	65.92	
207A Dearborn	WHFR	LIC CN MI	158.9 338.9	78.12 BLED19931006KF	42 19 26 83 14 09	0.27 32	219 1.4	11.1 Henry Ford Community Colle	65.86	69.33	
202A Ann Arbor	WCBNFM	LIC VN MI	189.4 9.4	79.19 BLED19870202KB	42 16 37 83 44 07	0.2 36	318 1.4	10.8 The Regents Of The Univ. O	67.36	70.50	
205A Grand Rapids	WBLUFM	LIC CN MI	271.0 91.0	166.89 BLED19930712KB	42 59 15 85 37 26	0.65 117	341 48.1	14.0 Blue Lake Fine Arts Camp	94.88	100.68	

CH CITY	CALL	TYPE STATE	AZI. <--	DIST FILE #	LAT. LNG.	Pwr(kW) HAAT(M)	COR(M) INT(km)	PRO(km) LICENSEE	*IN* (Overlap	*OUT* in km)
258B Detroit	WYCD	LIC CN MI	149.9 329.9	67.62 BLH19940829KA	42 27 13 83 09 50	17.5 214	440 15.6	11.0 Infinity Broadcasting Corp	15.0R	52.6M
203C3 Elkton	990104	APP DCN MI	24.0 204.0	94.80 BPED19990104MO	43 45 30 83 05 51	15 93	321 0.9	11.3 Csn International	80.13	59.99
205C3 Bucks	AP205	APP VX MI	356.1 176.1	195.24 BNPED20000110ABB	44 44 00 83 44 42	0.5 83	402 47.8	13.9 Great Lakes Community Broa	133.01	133.61
207B Chatham	ALLO	ON	115.3 295.3	135.83 RM	42 27 00 82 05 00	50 -177	0 3.5	7.8 124.29	124.29	96.21
202C1 White Star	WEJC.A	APP EX MI	324.4 144.4	133.70 BPED19980909ME	43 57 14 84 32 56	80 176	394 1.4	14.4 Superior Communications	112.00	72.90
202A Port Huron	WNFA	LIC CN MI	88.7 268.7	90.50 BLED19860528KD	42 59 36 82 28 06	1.3 49	251 0.4	6.5 Ross Bible Church	82.37	76.41
204C Interlochen	WIAA	LIC CN MI	310.7 130.7	224.57 BLED19900105KB	44 16 33 85 42 49	100 246	658 21.7	14.4 Interlochen Center For The	110.44	134.95
205B1 Weston	AP205	APP CX OH	187.7 7.7	206.58 BNPED19991214AAH	41 08 12 83 54 24	14.3 140	352 36.9	10.8 Csn International	87.84	129.73
203A Gagetown	980505	APP CN MI	24.0 204.0	94.80 BPED19980505MD	43 45 30 83 05 51	6 93	321 0.9	11.3 Plonta Broadcasting Inc.	80.88	66.51
205A Center Township	AP205	APP CX OH	181.3 1.3	180.20 BNPED20000210AAB	41 21 30 83 37 35	1.5 40	236 36.2	10.6 Great Lakes Community Broa	121.80	131.21
207A Jackson	981224	APP VX MI	218.2 38.2	98.74 BPED19981224MB	42 16 50 84 19 12	0.5 51	332 1.4	12.2 Great Lakes Community Broa	84.96	86.30
259C Midland	WUGN	LIC CN MI	307.5 127.5	98.65 BLH19950802KB	43 30 56 84 32 49	100 310	520 14.4	14.4 Family Life Broadcasting S	29.0R	69.7M
203A Jackson	WJKQ.C	CP VN MI	219.3 39.3	101.33 BPED19990607ME	42 16 22 84 21 27	0.1 46	327 1.4	12.3 Great Lakes Community Broa	88.34	93.00
203A Eagle	WJOM	CP VX MI	258.5 78.5	105.26 BNPED19991103ABT	42 47 04 84 50 18	4.5 28	279 1.4	13.4 Michigan Community Radio	90.21	89.29
06-2C Lansing	WLNSTV	LI HN MI	243.8 63.8	72.89 BLCT20020103AAA	42 41 19 84 22 35	100 304	577 233.9	174.1 Young Broadcasting Of Lans	To Grd B=	-31.01

***Affixed to 'IN' or 'Out' values = site inside protected contour.
ERP and HAAT are on direct line to and from reference station.

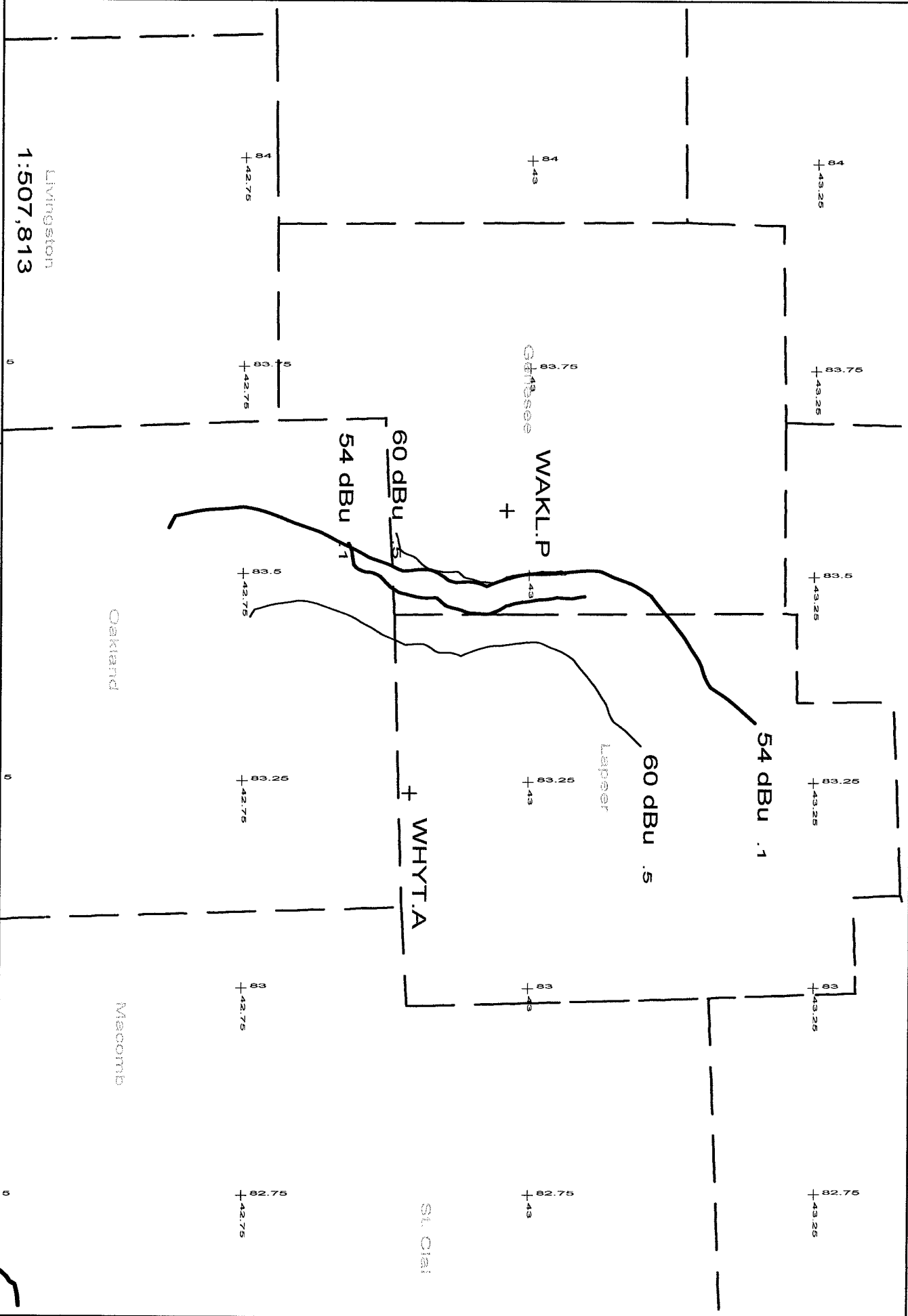


Scale 1:1 250,000



CIMX 204C1 100KV 360M AMSL
WAKL.P 205A .38KW 330M AMSL

Exhibit 15-A
EMF - 10/03



WAKL.P 205A .38kW 330M AMSL
WHYT.A 206A 6kW 404M AMSL

Exhibit 15-B
EMF - 10/03

Educational Media Foundation

Exhibit 15-B

5700 West Oaks Boulevard ♦ Rocklin ♦ California ♦ 95765

Flint, MI

WHYT.A vs WAKL.P

EMF
10-08-2003 30 Sec. Terrain Data

WAKL.P
Channel = 205A
Max ERP = 0.38 kw
RCAMSL = 330 M
N. Lat = 425849
W. Lng = 833440

WHYT.A BPED20030508ACX
Channel = 206A
Max ERP = 6 kw
RCAMSL = 404 M
N. Lat = 42 53 47
W. Lng = 83 14 09

Protected
60 dBu

Interfering
54 dBu

Azimuth (degrees)	ERP (kw)	HAAT (m)	Dist (km)	Azimuth (degrees)	ERP (kw)	HAAT (m)	Dist (km)	Actual (dBu)
020.0	000.1905	0097.4	011.9	310.9	000.9719	0111.9	031.4	52.6
021.0	000.1827	0096.6	011.7	310.8	000.9683	0111.9	031.2	52.7
022.0	000.1751	0096.0	011.6	310.6	000.9647	0111.9	030.9	52.8
023.0	000.1676	0095.2	011.4	310.4	000.9608	0111.9	030.7	52.9
024.0	000.1604	0094.5	011.3	310.3	000.9563	0111.9	030.5	53.0
025.0	000.1532	0093.8	011.1	310.1	000.9518	0111.9	030.2	53.1
026.0	000.1463	0093.3	010.9	309.9	000.9454	0111.9	030.0	53.2
027.0	000.1395	0092.9	010.8	309.7	000.9380	0111.9	029.8	53.3
028.0	000.1328	0092.2	010.6	309.4	000.9287	0111.6	029.6	53.3
029.0	000.1263	0091.2	010.4	309.2	000.9174	0111.6	029.4	53.4
030.0	000.1200	0090.0	010.3	308.8	000.9055	0111.6	029.1	53.5
031.0	000.1152	0089.0	010.1	308.6	000.8954	0111.6	028.9	53.6
032.0	000.1104	0088.2	009.9	308.3	000.8857	0110.9	028.8	53.6
033.0	000.1057	0087.7	009.8	308.1	000.8771	0110.9	028.6	53.6
034.0	000.1012	0087.5	009.7	307.9	000.8691	0110.9	028.4	53.7
035.0	000.0967	0087.3	009.6	307.7	000.8608	0110.9	028.2	53.8
036.0	000.0924	0087.0	009.5	307.4	000.8516	0110.0	028.1	53.8
037.0	000.0881	0086.7	009.3	307.1	000.8419	0110.0	027.9	53.8
038.0	000.0839	0086.2	009.2	306.9	000.8313	0110.0	027.7	53.9
039.0	000.0799	0085.7	009.0	306.5	000.8196	0110.0	027.6	53.9
040.0	000.0759	0085.2	008.9	306.2	000.8082	0109.0	027.4	53.8
041.0	000.0728	0085.2	008.8	306.0	000.7999	0109.0	027.3	53.9
042.0	000.0698	0085.4	008.7	305.8	000.7924	0109.0	027.1	53.9
043.0	000.0668	0085.4	008.6	305.5	000.7837	0109.0	027.0	54.0
044.0	000.0639	0085.1	008.5	305.2	000.7733	0108.1	026.9	53.9
045.0	000.0611	0084.6	008.4	304.9	000.7616	0108.1	026.7	53.9
046.0	000.0583	0084.0	008.2	304.6	000.7497	0108.1	026.6	54.0
047.0	000.0556	0083.7	008.1	304.2	000.7381	0107.4	026.5	53.9
048.0	000.0530	0083.4	008.0	303.9	000.7270	0107.4	026.4	53.9
049.0	000.0504	0083.4	007.9	303.6	000.7169	0107.4	026.3	53.9
050.0	000.0479	0083.4	007.8	303.3	000.7070	0106.8	026.2	53.9
051.0	000.0461	0083.6	007.7	303.1	000.6993	0106.8	026.1	53.9
052.0	000.0443	0083.7	007.6	302.9	000.6912	0106.8	026.0	53.9
053.0	000.0426	0083.7	007.6	302.6	000.6823	0106.8	025.9	53.9
054.0	000.0409	0083.5	007.5	302.3	000.6726	0106.5	025.8	53.9
055.0	000.0393	0083.0	007.4	302.0	000.6626	0106.5	025.7	53.9
056.0	000.0377	0082.4	007.3	301.7	000.6522	0106.5	025.6	53.9
057.0	000.0361	0081.9	007.2	301.3	000.6418	0106.7	025.6	53.9
058.0	000.0345	0081.5	007.1	301.0	000.6316	0106.7	025.5	53.9
059.0	000.0330	0081.1	007.0	300.7	000.6216	0106.7	025.4	53.8
060.0	000.0315	0080.8	006.9	300.4	000.6117	0107.1	025.4	53.8
061.0	000.0312	0080.4	006.9	300.2	000.6055	0107.1	025.3	53.9
062.0	000.0310	0079.9	006.8	300.0	000.5991	0107.1	025.2	53.9
063.0	000.0307	0079.5	006.8	299.8	000.5938	0107.1	025.1	53.9
064.0	000.0304	0079.1	006.8	299.6	000.5885	0107.1	025.0	53.9

Educational Media Foundation

Exhibit 15-B

5700 West Oaks Boulevard ♦ Rocklin ♦ California ♦ 95765

Flint, MI

WHYT.A vs WAKL.P continued

065.0	000.0301	0078.6	006.7	299.3	000.5831	0107.4	025.0	53.9
066.0	000.0298	0078.0	006.7	299.1	000.5773	0107.4	024.9	53.9
067.0	000.0296	0077.4	006.7	298.9	000.5716	0107.4	024.8	54.0
068.0	000.0293	0076.9	006.6	298.6	000.5658	0107.4	024.8	54.0
069.0	000.0290	0076.4	006.6	298.4	000.5602	0107.4	024.7	54.0
070.0	000.0287	0075.9	006.5	298.1	000.5544	0107.4	024.6	54.0
071.0	000.0287	0075.3	006.5	297.9	000.5491	0107.4	024.6	54.0
072.0	000.0287	0074.8	006.5	297.7	000.5438	0107.4	024.5	54.0
073.0	000.0287	0074.5	006.5	297.5	000.5389	0107.0	024.4	53.9
074.0	000.0287	0074.3	006.5	297.3	000.5342	0107.0	024.4	54.0
075.0	000.0287	0074.0	006.5	297.1	000.5291	0107.0	024.3	54.0
076.0	000.0287	0073.8	006.4	296.9	000.5241	0107.0	024.2	54.0
077.0	000.0287	0073.5	006.4	296.6	000.5190	0107.0	024.2	54.0
078.0	000.0287	0073.4	006.4	296.4	000.5141	0106.5	024.1	53.9
079.0	000.0287	0073.2	006.4	296.2	000.5090	0106.5	024.0	53.9
080.0	000.0287	0072.8	006.4	296.0	000.5035	0106.5	024.0	53.9
081.0	000.0294	0072.2	006.4	295.7	000.4988	0106.5	023.9	53.9
082.0	000.0300	0071.3	006.4	295.5	000.4936	0106.5	023.9	53.9
083.0	000.0307	0070.6	006.4	295.3	000.4887	0105.8	023.8	53.9
084.0	000.0314	0069.9	006.4	295.1	000.4836	0105.8	023.7	53.9
085.0	000.0321	0069.4	006.4	294.8	000.4787	0105.8	023.7	53.9
086.0	000.0328	0069.2	006.5	294.6	000.4741	0105.8	023.6	53.9
087.0	000.0335	0069.1	006.5	294.4	000.4694	0105.1	023.5	53.8
088.0	000.0342	0069.1	006.5	294.2	000.4647	0105.1	023.4	53.9
089.0	000.0349	0068.8	006.5	294.0	000.4597	0105.1	023.4	53.9
090.0	000.0356	0068.6	006.5	293.7	000.4547	0105.1	023.3	53.9
091.0	000.0374	0068.3	006.6	293.5	000.4505	0105.1	023.2	53.9
092.0	000.0394	0068.0	006.7	293.3	000.4462	0104.4	023.1	53.9
093.0	000.0413	0067.9	006.8	293.1	000.4417	0104.4	023.0	53.9
094.0	000.0433	0067.9	006.8	292.9	000.4371	0104.4	022.9	54.0
095.0	000.0454	0067.8	006.9	292.7	000.4323	0104.4	022.8	54.0
096.0	000.0475	0067.6	007.0	292.4	000.4271	0103.9	022.7	54.0
097.0	000.0496	0067.3	007.0	292.2	000.4218	0103.9	022.6	54.0
098.0	000.0518	0067.0	007.1	291.9	000.4163	0103.9	022.5	54.0
099.0	000.0540	0066.8	007.2	291.6	000.4107	0103.9	022.4	54.0
100.0	000.0563	0066.3	007.2	291.3	000.4048	0103.2	022.3	53.9
101.0	000.0585	0065.6	007.2	291.0	000.3986	0103.2	022.3	53.9
102.0	000.0606	0064.7	007.3	290.7	000.3923	0103.2	022.2	53.9
103.0	000.0628	0063.7	007.3	290.4	000.3860	0102.4	022.2	53.7
104.0	000.0651	0062.8	007.3	290.1	000.3796	0102.4	022.2	53.7
105.0	000.0674	0062.1	007.3	289.8	000.3803	0102.4	022.1	53.7
106.0	000.0697	0061.5	007.3	289.4	000.3833	0101.4	022.1	53.7
107.0	000.0721	0060.9	007.4	289.1	000.3865	0101.4	022.1	53.8
108.0	000.0745	0060.5	007.4	288.8	000.3896	0101.4	022.0	53.8
109.0	000.0769	0060.1	007.4	288.4	000.3928	0100.3	022.0	53.8
110.0	000.0794	0059.6	007.5	288.1	000.3961	0100.3	022.0	53.8
111.0	000.0814	0059.0	007.5	287.7	000.3994	0100.3	022.0	53.9
112.0	000.0834	0058.3	007.5	287.4	000.4027	0099.0	022.0	53.8
113.0	000.0854	0057.6	007.5	287.1	000.4060	0099.0	022.0	53.8
114.0	000.0874	0057.0	007.5	286.7	000.4093	0099.0	022.0	53.9
115.0	000.0894	0056.6	007.5	286.4	000.4126	0097.5	022.0	53.7
116.0	000.0915	0056.3	007.5	286.0	000.4161	0097.5	022.0	53.8
117.0	000.0936	0056.2	007.6	285.7	000.4196	0097.5	022.0	53.8
118.0	000.0957	0056.0	007.6	285.3	000.4231	0095.7	022.0	53.7
119.0	000.0978	0055.9	007.7	284.9	000.4267	0095.7	022.0	53.7
120.0	000.1000	0055.8	007.7	284.6	000.4303	0095.7	021.9	53.8
121.0	000.1025	0055.8	007.7	284.2	000.4341	0093.8	021.9	53.6
122.0	000.1049	0055.4	007.8	283.9	000.4376	0093.8	022.0	53.6
123.0	000.1075	0054.6	007.7	283.5	000.4409	0093.8	022.0	53.6
124.0	000.1100	0053.7	007.7	283.2	000.4440	0091.9	022.1	53.4

Educational Media Foundation

Exhibit 15-B

5700 West Oaks Boulevard ♦ Rocklin ♦ California ♦ 95765

Flint, MI

WHYT.A vs WAKL.P continued

125.0	000.1126	0052.9	007.7	282.9	000.4471	0091.9	022.2	53.4
126.0	000.1152	0052.1	007.7	282.6	000.4502	0091.9	022.2	53.4
127.0	000.1178	0051.3	007.7	282.3	000.4532	0090.3	022.3	53.2
128.0	000.1205	0050.8	007.7	282.0	000.4565	0090.3	022.3	53.2
129.0	000.1232	0051.2	007.8	281.6	000.4606	0090.3	022.3	53.2
130.0	000.1259	0052.2	007.9	281.1	000.4654	0089.3	022.3	53.2
131.0	000.1290	0053.3	008.0	280.6	000.4706	0089.3	022.2	53.3
132.0	000.1321	0054.4	008.2	280.1	000.4761	0088.7	022.2	53.3
133.0	000.1353	0055.5	008.3	279.6	000.4874	0088.7	022.1	53.5
134.0	000.1385	0056.4	008.5	279.1	000.5002	0088.2	022.1	53.5
135.0	000.1417	0057.3	008.6	278.6	000.5132	0088.2	022.1	53.7
136.0	000.1450	0058.2	008.7	278.1	000.5262	0087.5	022.1	53.7
137.0	000.1483	0059.0	008.8	277.6	000.5391	0087.5	022.1	53.8
138.0	000.1517	0059.9	008.9	277.1	000.5526	0086.8	022.1	53.8
139.0	000.1551	0060.9	009.1	276.5	000.5667	0086.8	022.1	53.9
140.0	000.1585	0061.8	009.2	276.0	000.5803	0085.8	022.1	53.9
141.0	000.1668	0062.3	009.3	275.4	000.5962	0084.5	022.1	53.9
142.0	000.1753	0062.2	009.5	274.9	000.6105	0084.5	022.2	54.0
143.0	000.1841	0061.8	009.5	274.5	000.6233	0082.7	022.2	53.8
144.0	000.1930	0061.1	009.6	274.1	000.6352	0082.7	022.3	53.8
145.0	000.2022	0060.5	009.7	273.6	000.6470	0082.7	022.4	53.8
146.0	000.2116	0059.9	009.8	273.2	000.6586	0080.9	022.5	53.6
147.0	000.2211	0059.2	009.8	272.9	000.6695	0080.9	022.6	53.6
148.0	000.2309	0058.4	009.9	272.5	000.6797	0080.9	022.7	53.6
149.0	000.2410	0057.6	009.9	272.2	000.6890	0078.9	022.8	53.4
150.0	000.2512	0056.7	009.9	271.9	000.6975	0078.9	023.0	53.3
151.0	000.2629	0055.9	010.0	271.6	000.7068	0078.9	023.1	53.3
152.0	000.2748	0055.3	010.0	271.3	000.7173	0077.0	023.2	53.0
153.0	000.2870	0055.2	010.1	270.8	000.7300	0077.0	023.3	53.0
154.0	000.2995	0055.7	010.3	270.3	000.7463	0075.0	023.4	52.8
155.0	000.3123	0056.5	010.5	269.7	000.7671	0075.0	023.5	52.9
156.0	000.3253	0057.4	010.6	269.1	000.7905	0073.0	023.6	52.7
157.0	000.3386	0058.1	010.8	268.6	000.8121	0073.0	023.7	52.7
158.0	000.3521	0058.4	010.9	268.1	000.8307	0071.1	023.9	52.5
159.0	000.3659	0058.2	011.0	267.8	000.8448	0071.1	024.0	52.5
160.0	000.3800	0057.7	011.1	267.5	000.8558	0071.1	024.2	52.4

Saginaw

84
43.25

+ AP204
83.75
43.25

83.5
43.25

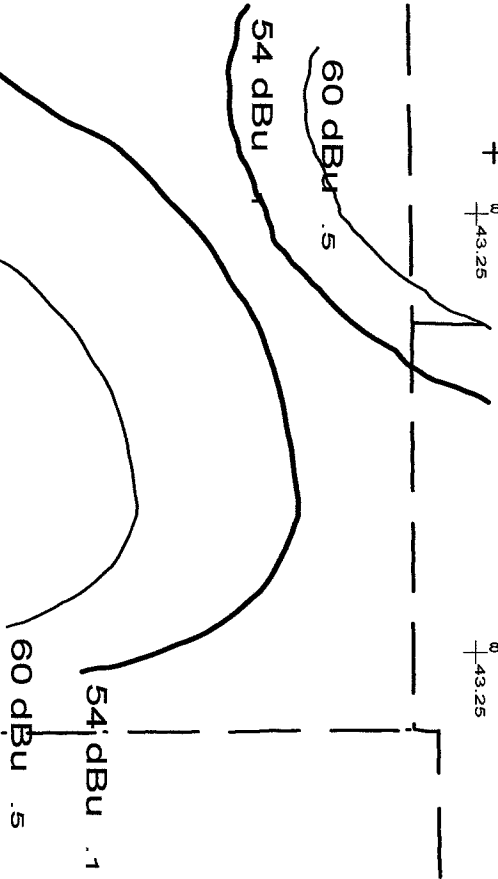
83.25
43.25

84
43

83.75
43.25
Shiawassee

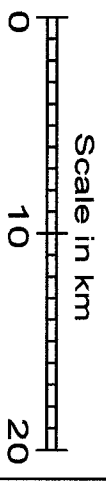
+ WAKL.P
83.8
43

83.25
43
Lapeer



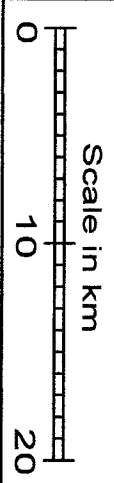
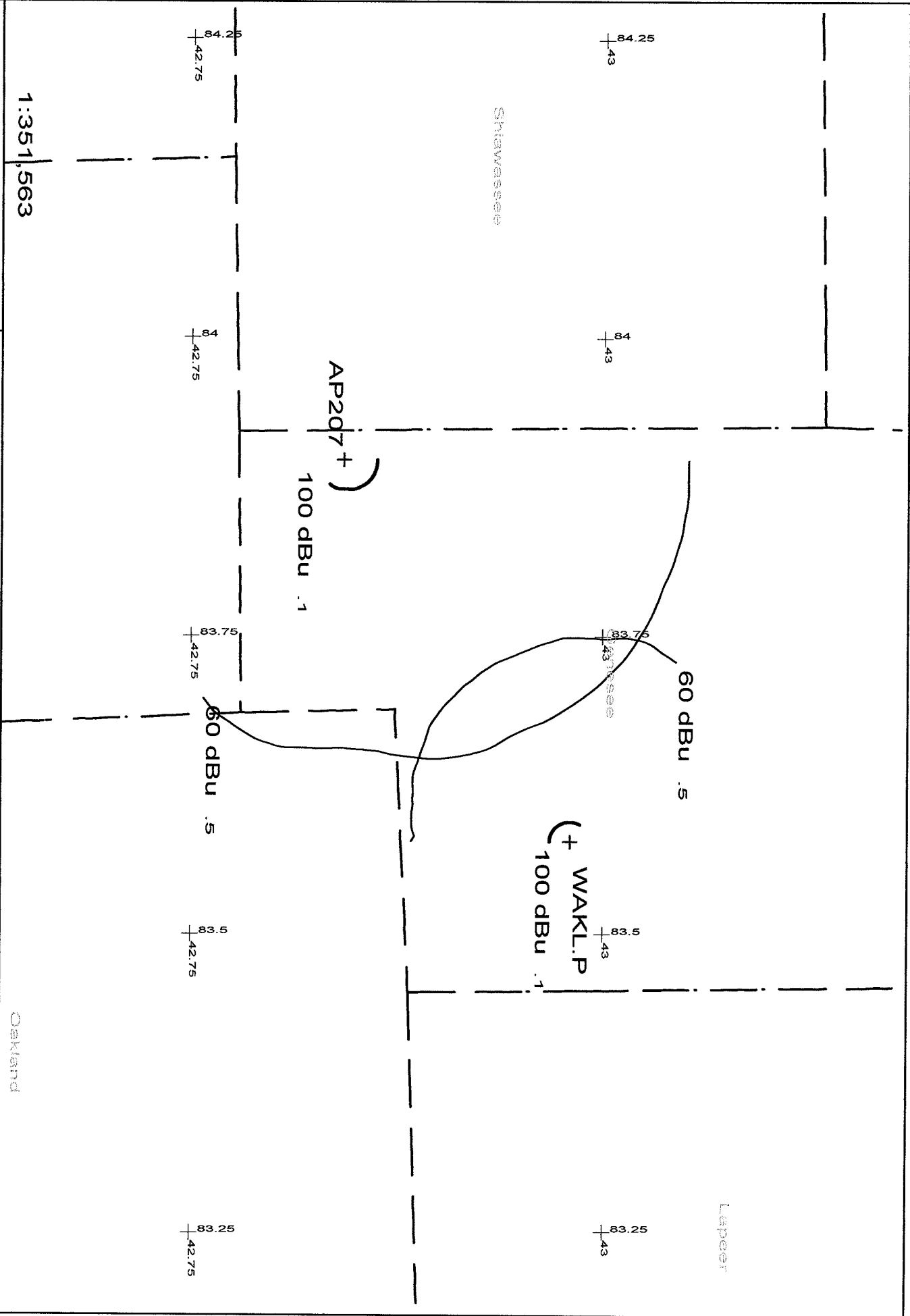
Shiawassee

1:351,563



WAKL.P 205A .38kW 330M AMSL
AP204 204A .25kW 249M AMSL

Exhibit 15-C
EMF - 10/03



WAKL.P 205A .38kW 330M AMSL
AP207 207A 3.5kW 331M AMSL

Exhibit 15-D
EMF - 10/03