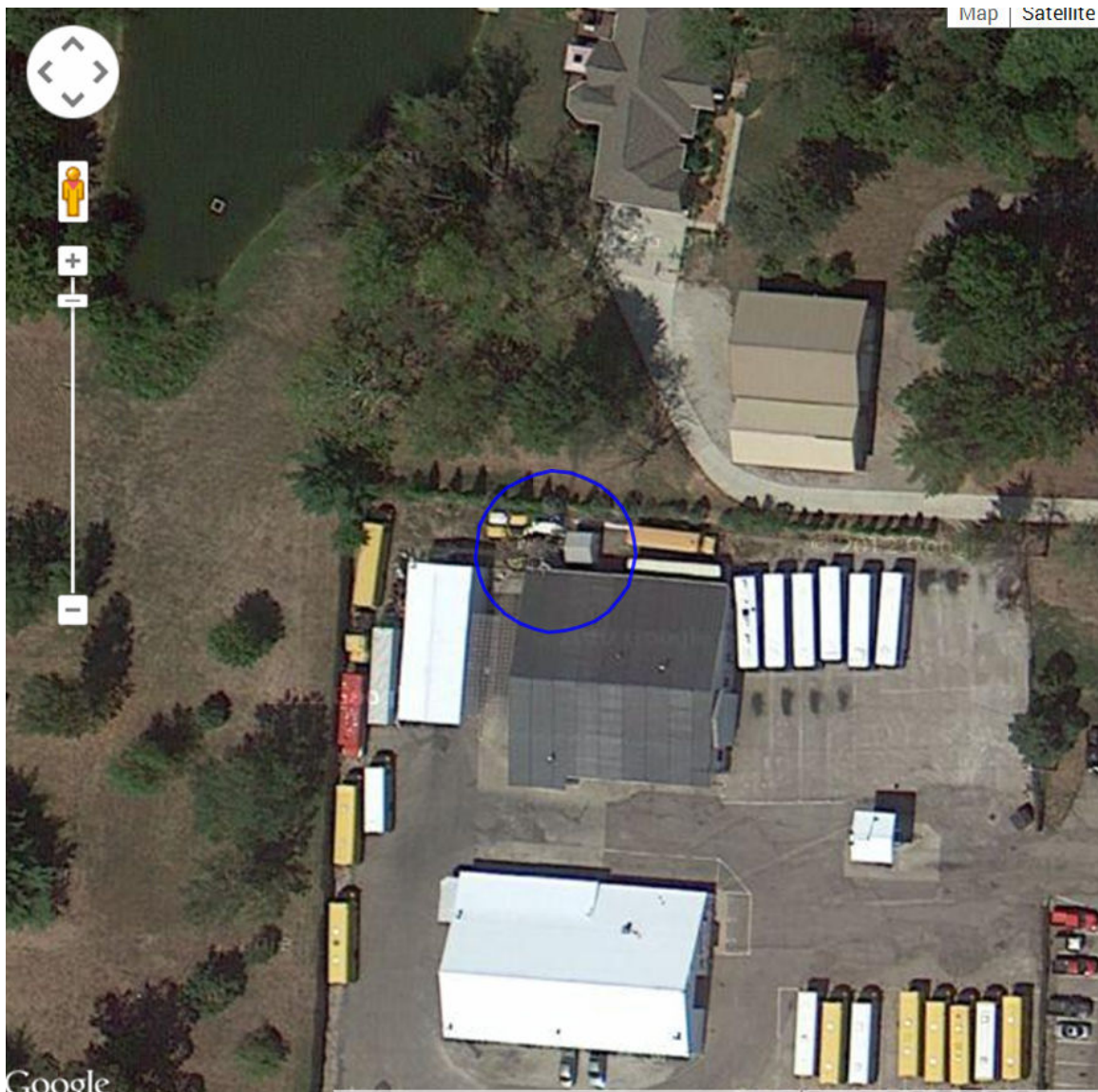


Technical Exhibit

The blue circle represents an area that is 9 meters around the proposed LPFM station at the center of radiation of the antenna. Because of the antenna height, at 18 meters, the interference will not reach the ground. The interference area will not extend into the unoccupied facility near which the tower is standing. It will not reach any roadway.



Second-Adjacent Channel Waiver Request

The proposed DELHI PUBLIC RADIO, INC. facility is short-spaced to second-adjacent channel station WRRM(FM). DELHI PUBLIC RADIO, INC. respectfully requests second-adjacent waiver processing regarding WRRM(FM) by the procedures approved in FCC 12-144.

The proposed DELHI PUBLIC RADIO, INC. facility will be located at 18 meters AGL, at a HAAT of 53 meters and ERP of 31 watts. The (50,50) signal strength of WRRM at the LPFM's transmitter site is 92.399 dBu. The proposed LPFM's 132.399 dBu (50,10) interference contour extends only 9 meters from the antenna - not reaching the ground, any facility or public roadway.

The above conditions satisfy the LPFM 2nd adjacent channel waiver standard of part 73.807(e)(1) as approved in FCC 12-144. There is no population receiving any interference from the LPFM impacting their ability to listen to WRRM.