

## *Greenwood, Mississippi*

### A. Transmitter Site:

Site Location: **5.2 km NE of Inverness, Mississippi**

**Mailing Address**

**3825 Ridgewood Road  
Jackson, MS 39211**

NCE-FM Channel	Number	215
	Frequency	90.9 MHz
	Class	C1

Height of Site Above Mean Sea Level (AMSL) .....	<b>35.0 M</b>
Overall Height of Structure Above Ground .....	<b>322.6 M</b>
(including all appurtenances)	
Overall Height of Structure Above Mean Sea Level .....	<b>357.6 M</b>
(including all appurtenances)	
Height of Site Above Average Terrain .....	<b>1.3 M</b>
Antenna Height Radiation Center (R/C) Above Ground .....	<b>267.0 M</b>
Antenna Height R/C Above Mean Sea Level .....	<b>302.0 M</b>
Antenna Height R/C Above Average Terrain .....	<b>268.3 M</b>
Average of All Non-Odd Radials .....	<b>33.7 M</b>

Transmitter Power Required	22.1 kW
Maximum Power Input to Antenna	18.2 kW
Transmission Line Loss	0.85 dB
Transmission Line Efficiency	82.3%
RMS Gain at Main Lobe	7.40 dB
RMS Gain at Horizontal	7.40 dB
Maximum Effective Radiated Power	20.00 dBk
In Beam Maximum	100.0 kW
Maximum Effective Radiated Power	20.00 dBk
In Horizontal Plane	100.0 kW

# WMAO-FM CHANNEL 215

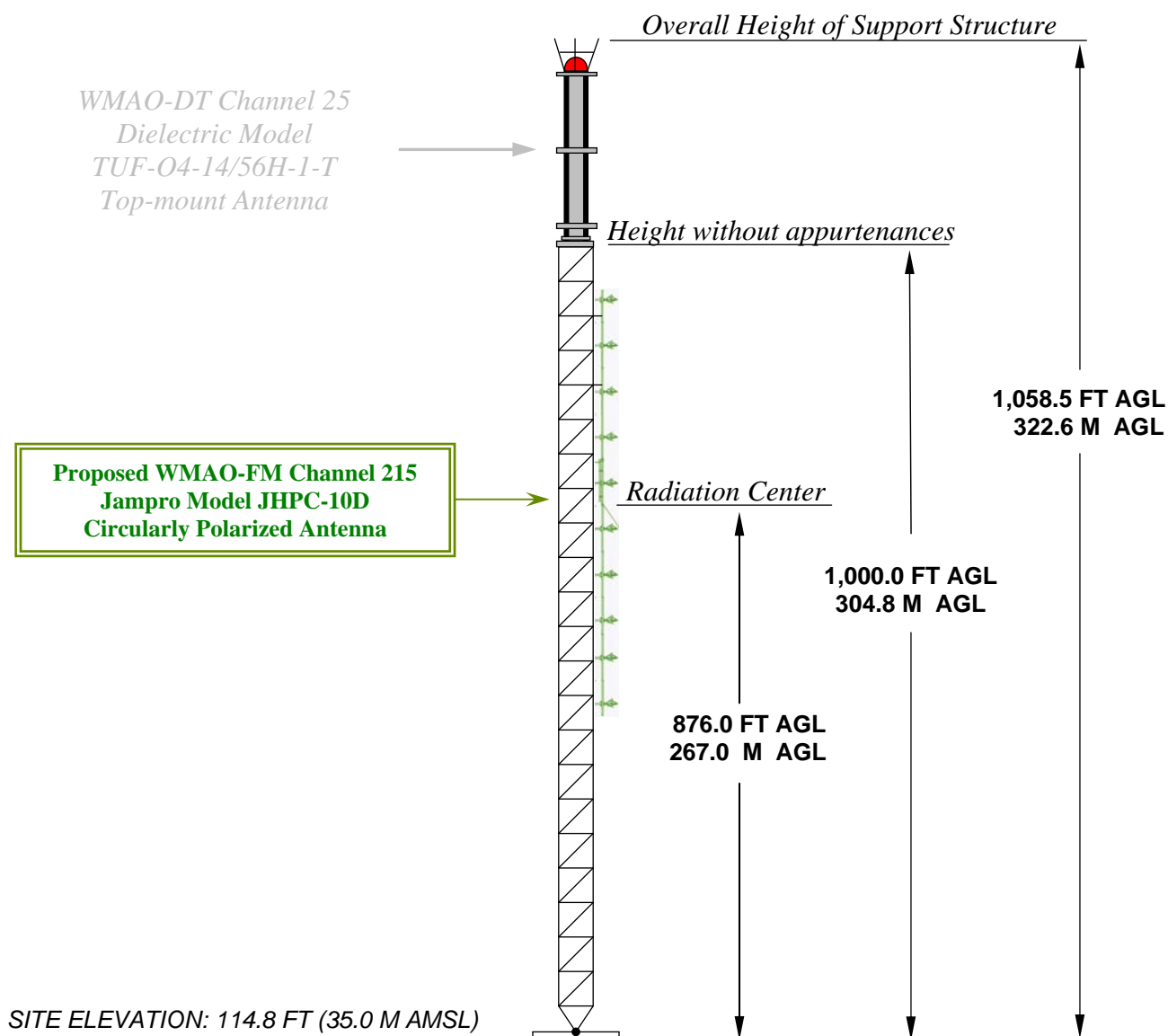
*Greenwood, Mississippi*

## DATA FOR PROPOSED NONDIRECTIONAL TRANSMITTING ANTENNA

- A. **Antenna:** Jampro Model JHPC-10D circularly polarized, nondirectional, side-mount antenna.
- B. **Electrical Beam Tilt:** None
- C. **Mechanical Beam Tilt:** None
- D. 

<b><u>Peak Gain</u></b>	<b><u>Horizontal Polarization</u></b>
Maximum:	5.5 (7.40 dB)
Horizontal:	5.5 (7.40 dB)
- E. **Length:** 97.4 feet (29.7 meters)
- F. **Transmitter Power Output (TPO):** 22.1 kW
- G. **Transmission Line:** 3" Rigid
- H. **Transmission Line Efficiency:** 82.3%
- I. **Transmission Line Length:** 950 feet (289.6 meters)
- J. **Transmission Line Attenuation:** 0.089 dB/100 ft
- K. **Transmission Line Loss:** 0.85 dB

## ANTENNA STRUCTURE ELEVATION VIEW



**OVERALL HEIGHT AGL:** ..... 322.6 M  
**OVERALL HEIGHT AMSL:** ..... 357.6 M  
**RADIATION CENTER AGL:** ..... 267.0 M  
**RADIATION CENTER AMSL:** ..... 302.0 M  
**AVERAGE OF NON-ODD RADIALS:** ..... 33.7 M  
**RADIATION CENTER HAAT:** ..... 268.3 M  
**SITE HAAT:** ..... 1.3 M

**COORDINATES: (NAD 27)**  
**N. LATITUDE** ..... 33° 22' 34"  
**W. LONGITUDE** ..... 90° 32' 32"  
**Antenna Structure Registration Number:**  
1041035

**NOTE: NOT TO SCALE**

**KESSLER AND GEHMAN**  
TELECOMMUNICATIONS CONSULTING ENGINEERS  
507 N.W. 60th Street, Suite C  
Gainesville, Florida 32607

**WMAO-FM Channel 215**  
*Greenwood, Mississippi*  
**20090519** **EXHIBIT 3**