

**Proposed Minor Change**

This minor change application proposes a change from channel 205 to channel 212 including a correction in the geographical coordinates.

A waiver of Section 74.1233(a)(1) is hereby requested due to the displacement of K205CA by KNSZ, CH 206, Ottumwa, IA (BPED-20090527AFR). It is not technically feasible to operate on a first, second, or third adjacent channel, thus in order to continue to provide service to listeners this move to an alternate frequency (channel 212) is necessary and believed to be in the public interest to do so.

	Minor Change
Channel / Class	212
Geographical Coordinates	41 01 04 / 92 24 40
ASRN	N/A
Site AMSL	199 m
Tower AGL	28.5 m
COR AMSL	227 m
COR AGL	27.8 m
HAAT	-8 m
ERP	0.250 kW (V only, non-DA)

The below listed pages of this exhibit contains information as indicated.

Page 2            Tabulation of HAAT / ERP / distance to 60 dBu contour  
Page 3            60 dBu contour map  
Page 4 - 6        Allocation study

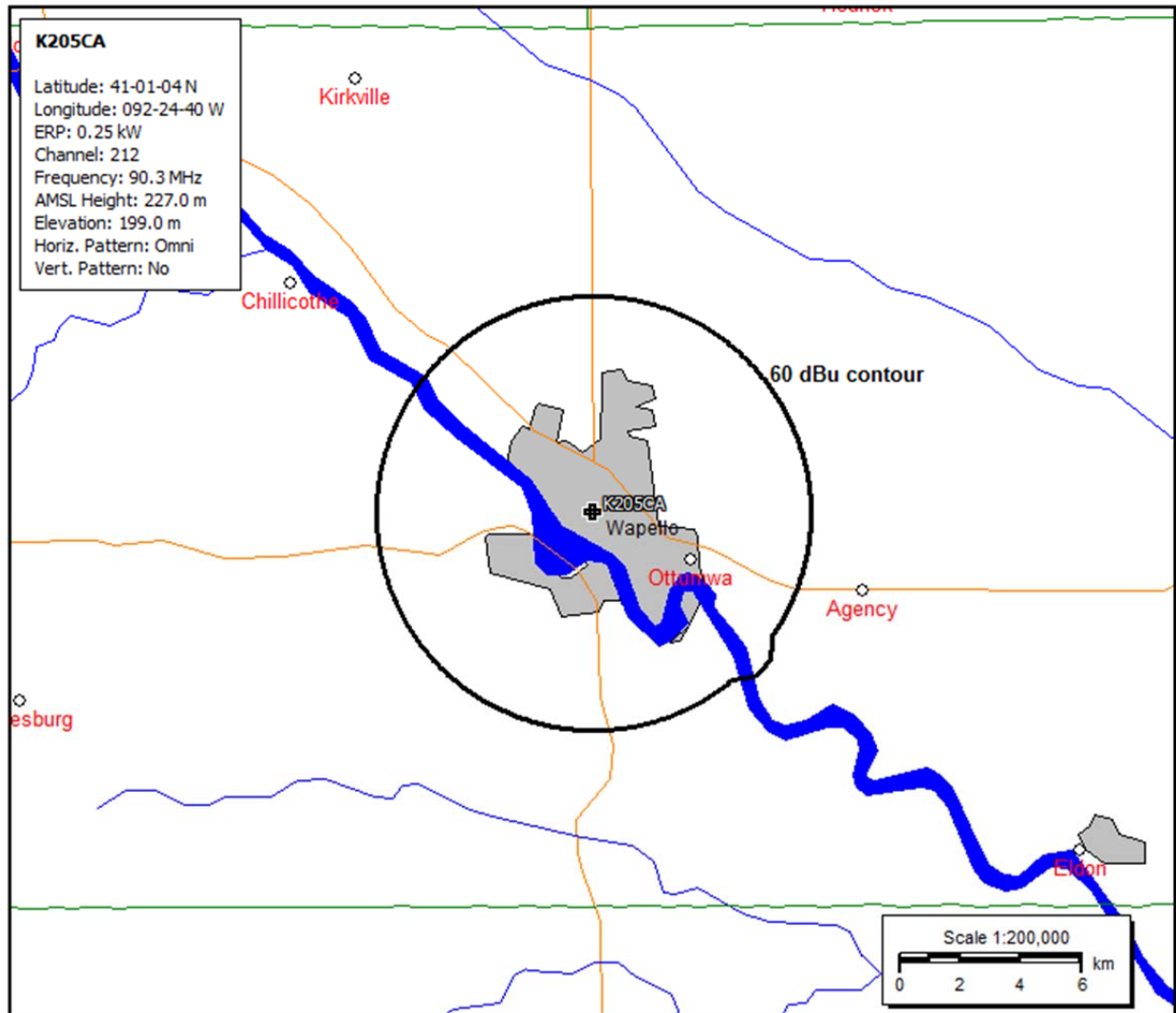
Tabulation of HAAT / ERP / distance to 60 dBu contour

CH 212      41 01 04 / 92 24 40      0.250 kW ERP (V only, non-DA)      227 M COR AMSL      -8 M HAAT

Azi.	AV EL	HAAT	ERP kW	dBk	Field	60-F5
000	248.9	-21.9	0.2500	-6.02	1.000	7.09
010	245.5	-18.5	0.2500	-6.02	1.000	7.09
020	242.7	-15.7	0.2500	-6.02	1.000	7.09
030	242.8	-15.8	0.2500	-6.02	1.000	7.09
040	240.8	-13.8	0.2500	-6.02	1.000	7.09
050	234.3	-7.3	0.2500	-6.02	1.000	7.09
060	235.8	-8.8	0.2500	-6.02	1.000	7.09
070	234.6	-7.6	0.2500	-6.02	1.000	7.09
080	234.5	-7.5	0.2500	-6.02	1.000	7.09
090	234.0	-7.0	0.2500	-6.02	1.000	7.09
100	235.4	-8.4	0.2500	-6.02	1.000	7.09
110	234.0	-7.0	0.2500	-6.02	1.000	7.09
120	225.6	1.4	0.2500	-6.02	1.000	7.09
130	193.2	33.8	0.2500	-6.02	1.000	7.48
140	203.7	23.3	0.2500	-6.02	1.000	7.09
150	216.4	10.6	0.2500	-6.02	1.000	7.09
160	224.7	2.3	0.2500	-6.02	1.000	7.09
170	223.3	3.7	0.2500	-6.02	1.000	7.09
180	225.8	1.2	0.2500	-6.02	1.000	7.09
190	230.0	-3.0	0.2500	-6.02	1.000	7.09
200	233.9	-6.9	0.2500	-6.02	1.000	7.09
210	239.5	-12.5	0.2500	-6.02	1.000	7.09
220	243.2	-16.2	0.2500	-6.02	1.000	7.09
230	249.2	-22.2	0.2500	-6.02	1.000	7.09
240	255.0	-28.0	0.2500	-6.02	1.000	7.09
250	253.7	-26.7	0.2500	-6.02	1.000	7.09
260	240.5	-13.5	0.2500	-6.02	1.000	7.09
270	237.1	-10.1	0.2500	-6.02	1.000	7.09
280	238.4	-11.4	0.2500	-6.02	1.000	7.09
290	239.2	-12.2	0.2500	-6.02	1.000	7.09
300	219.7	7.3	0.2500	-6.02	1.000	7.09
310	204.5	22.5	0.2500	-6.02	1.000	7.09
320	228.3	-1.3	0.2500	-6.02	1.000	7.09
330	240.2	-13.2	0.2500	-6.02	1.000	7.09
340	256.6	-29.6	0.2500	-6.02	1.000	7.09
350	255.3	-28.3	0.2500	-6.02	1.000	7.09

(yellow highlighted values establish average HAAT)

60 dBu Contour



**Allocation Study**

CH 212		41 01 04 / 92 24 40		0.250 kW ERP (V only, non-DA)			227 M COR AMSL		-8 M HAAT	
CH CITY	CALL	TYPE STATE	AZI. <--	DIST FILE #	LAT. LNG.	Pwr (kW) HAAT(M)	INT (km) COR(M)	PRO (km) LICENSEE	*IN* (Overlap in km)	*OUT*
<b><u>1<sup>st</sup>, 2<sup>nd</sup>, &amp; 3<sup>rd</sup> adjacent channel relationships:</u></b>										
209A	KVCI	LIC	350.8	80.37	41 43 55.0	3.100	2.3	24.6	71.0	54.6
Montezuma		IA	170.6	BLED20121018AAQ	92 34 01.0	103	391	Vcy America, Inc.		
210C3	KAYP	LIC	108.1	77.04	40 47 59.0	9.000	3.5	36.1	66.4	39.9
Burlington		IA	288.7	BLED20001114AAA	91 32 35.0	134	337	American Family Association		
211C	WOI-FM	LIC	311.6	133.61	41 48 33.0	100.000	124.2	83.6	2.3	39.9
Ames		IA	130.8	BLED978	93 36 53.0	454	745	Iowa State University Of S		
211D	K211FX	LIC	21.7	76.02	41 39 10.0	0.250	13.0	9.3	55.9	56.6
Amana		IA	202.0	BLFT20131119ALH	92 04 19.0	41	288	Family Stations, Inc.		
212C1	WVIK	LIC	69.4	172.41	41 32 49.0	31.000	151.2	64.5	14.1	84.1
Rock Island		IL	250.6	BLED19911010KA	90 28 35.0	334	536	Augustana College		
212C2	KCKE	LIC	209.1	156.77	39 46 53.0	32.000	114.2	35.4	35.5	97.6
Chillicothe		MO	28.5	BLED20110202AAU	93 18 10.0	82	302	Lake Area Educational Broa		
212B	WQUB	LIC	143.5	146.29	39 57 22.0	28.000	126.0	48.2	13.2	74.4
Quincy		IL	324.1	BLED19970916KF	91 23 22.0	127	300	The Curators Of The Univer		
213A	KHOE	LIC	90.1	37.17	41 00 59.0	0.100	8.4	5.9	21.7	21.2
Fairfield		IA	270.4	BLED19940809KB	91 58 09.0	30	257	Fairfield Educational Radi		
214C1	KVSR	LIC	187.3	88.25	40 13 46.0	50.000	5.6	49.6	75.6	37.5
Kirksville		MO	7.2	BMLLED20140211AAL	92 32 38.0	143	415	Lake Area Educational Broa		
215C	KUNI	LIC	17.4	151.39	42 18 59.0	100.000	12.9	88.8	131.4	61.5
Cedar Falls		IA	197.8	BMLLED19841106LW	91 51 31.0	524	799	University Of Northern Iow		

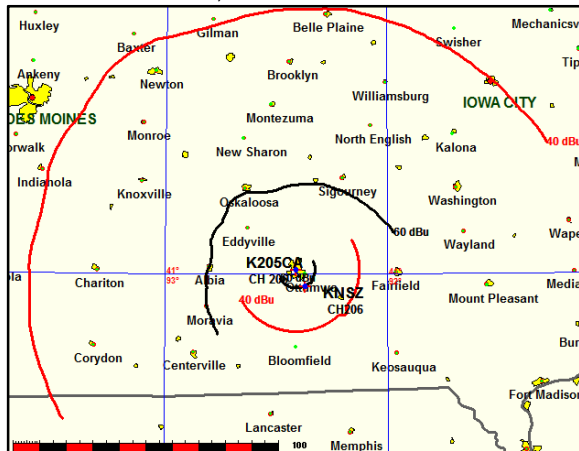
**I.F. relationships:**

None

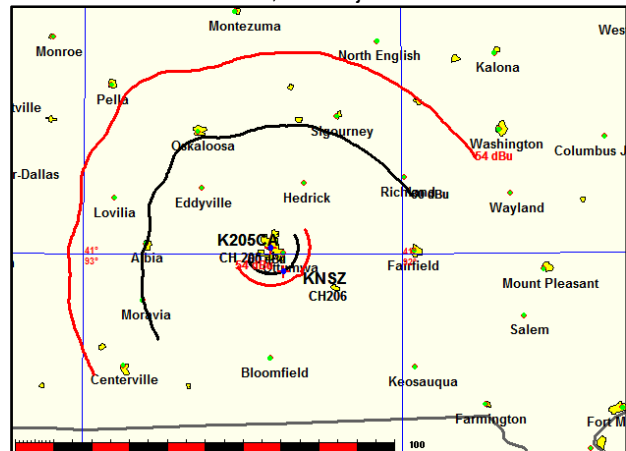
### Displacement Study

KNSZ (LIC), CH 206, Ottumwa, IA precludes K205CA from operating on its licensed channel 205 (first adjacent to KNSZ), first adjacent channel 206 (co-channel to KNSZ) and second adjacent channel 207 (first adjacent to KNSZ) as there would be prohibited overlap with and cause interference to KNSZ.

K205CA on CH 206, co-channel to KNSZ on CH 206

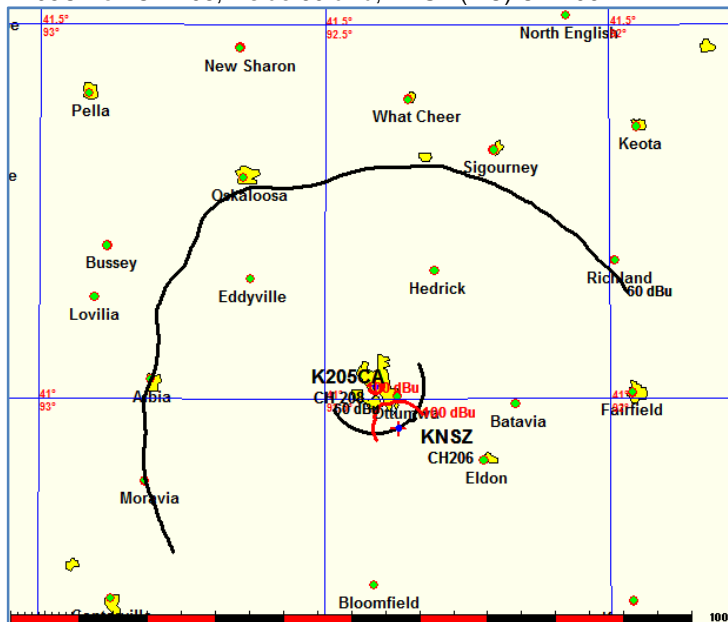


K205CA on CH 205/207, first adjacent to KNSZ on CH 206



If K205CA were to operate on third adjacent channel 208 it would be within the 60 dBu contour of KNSZ (LIC), CH 206. KNSZ has a signal strength at the K205CA site of 91.2 dBu. K205CA's corresponding interference contour is 131.2 dBu. K205CA's antenna is located on the roof of an occupied building at a COR height of 5.5 meters above the roof with an ERP of 0.250 kW (non-DA). In order to comply with the "no population" requirement for being located within KNSZ's (LIC) 60 dBu contour the only non-directional antenna that could be utilized would be a JLCF 3bay/4bay .75 spaced or 4 bay .5 spaced antenna which cannot be accommodated at K205CA's location, therefore K205CA is precluded from using third adjacent channel 208.

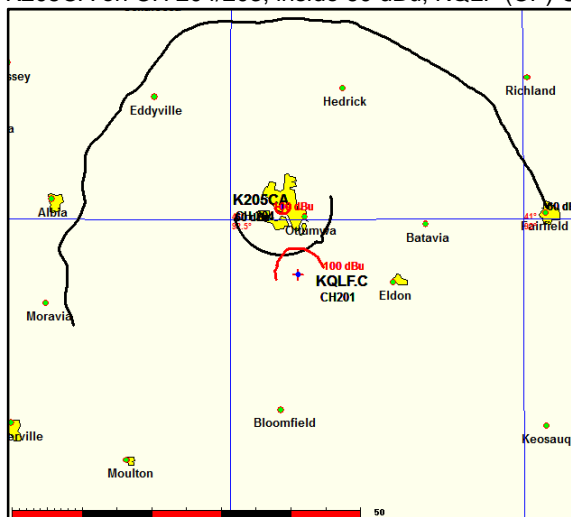
K205CA on CH 208, inside 60 dBu, KNSZ (LIC) CH 206



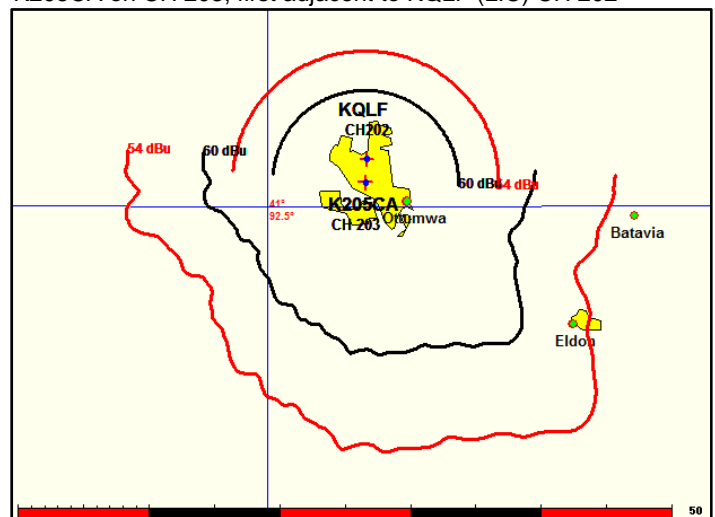
### Displacement Study

If K205CA were to operate on first adjacent channel 204 or second adjacent channel 203 it would be within the 60 dBu contour of the construction permit of KQLF (CP), CH 201. KQLF (CP) has a signal strength at the K205CA site of 83.5 dBu. K205CA's corresponding interference contour is 123.5 dBu. With the antenna COR 5.5 m above the roof of the main building and operating at its licensed ERP of 0.250 kW (non-DA) there is no antenna that can be utilized that would comply with the "no population" requirement for being located within KQLF's (CP) 60 dBu contour, therefore K205CA is precluded from using first adjacent channel 204 or second adjacent channel 203. Furthermore, operating on second adjacent channel 203 or third adjacent channel 202 would result in prohibited overlap with and cause interference to KQLF's licensed facility on channel 202. Operation on channel 202 would also result in prohibited overlap with and cause interference to KQLF (CP) on channel 201.

K205CA on CH 204/203, inside 60 dBu, KQLF (CP) CH 201



K205CA on CH 203, first adjacent to KQLF (LIC) CH 202



K205CA on CH 202, first adjacent to KQLF (CP) CH 201

