

**MINOR CHANGE APPLICATION**  
**SINCLAIR TELECABLE, INC.**  
**K238AF FM TRANSLATOR STATION**  
**CH 238D - 95.5 MHZ - 0.240 KW (DA)**  
**SANTA ROSA, CALIFORNIA**  
**March 2006**

**EXHIBIT B**

As indicated on Exhibit B1, the proposed operation of K238AF, with an effective radiated power of 0.24 kilowatt at 502.9 meters above mean sea level, will not cause interference to any existing, applied for, or proposed facility. However, the K238AF site is inside the 60 dBu contour of second adjacent station KRSH, Channel 240A, Healdsburg, California.<sup>1</sup> Because of the relationship between K238AF and KRSH, a 40 dB ratio of the protected and interfering contours applies. Since the site for K238AF is inside the protected contour of KRSH, we applied the 40 dB ratio to the respective contour of each station at the site. We calculated that the KRSH contour at the K238AF site is 68.5 dBu (50/50).

Using a desired to undesired ratio of 40 dBu, the K238AF interfering contour would be the 108.5 dBu (50/10) with respect to KRSH (see Exhibit B2). As shown on Exhibit B3, the distance to the 108.5 dBu (50/10) from the proposed K238AF site extends from a distance of 0.05 kilometer to a maximum of 0.41 kilometer. For a worst case distance, a radius of 0.41 kilometer was drawn from the proposed site. The proposed site is located atop a knoll, in the center of a private farm on which cattle graze. The entire area is within the 0.41 kilometer radius, as shown on Exhibit B5, and the interfering radius does not extend beyond the property

---

1) Principals of STI have attributable/controlling interest in Deas Communications, Inc., the licensee of KRSH.

boundaries of the site at which the antenna is located, nor cross any public roads. Further, there are no inhabited buildings impacted. Finally, there is no population within the 108.5 dBu contour. Therefore, the interference area is located in an unpopulated area. As such, it is believed that KRSH will not be impacted as a result of the proposed changes to K238AF. If necessary, STI respectfully requests a waiver of §74.1203 of the rules with respect to station KRSH.

**MINOR CHANGE APPLICATION**  
**SINCLAIR TELECABLE, INC.**  
**K238AF FM TRANSLATOR STATION**  
**CH 238D - 95.5 MHZ - 0.240 KW (DA)**  
**SANTA ROSA, CALIFORNIA**  
**March 2006**

**EXHIBIT B1**

Interference Analysis for K238AF Santa Rosa, California  
Using Proposed Site as Reference

REFERENCE	CH# 238D - 95.5 MHz, Pwr= 0.24 kW, HAAT=276.93 COR= 503 M	DISPLAY DATES
38 30 31 N.	Average Protected F(50-50)= 7.0 km	DATA 03-21-06
122 39 41 W.	Ave. F(50-10) 40 dBu= 23.5 54 dBu= 10.0 100 dBu= 1.1	SEARCH 03-21-06

CH CITY	CALL	TYPE STATE	AZI. <--	DIST FILE #	LAT. LNG.	Pwr (kW) HAAT (M)	COR (M) INT (km)	PRO (km) LICENSEE	*IN* (Overlap in km)	*OUT*
238D Santa Rosa	K238AF	LIC DVN CA	190.9 10.9	9.08 BLFT-19980212TE	38 25 42 122 40 52	0.078 -55	180 17.3	5.3 Sinclair Telecable, Inc.	-19.30*	-34.61
238D Lucerne	K238AE	LIC VN CA	351.5 171.4	60.37 BLFT-19971210TB	39 02 47 122 45 54	0.030 33	628 13.7	4.3 Mbu Licensee Llc	34.69	16.13
237B1 Vacaville	KUIC	LIC NCN CA	104.2 284.6	50.68 BLH-19990608KA	38 23 44 122 05 56	0.490 456	877 50.3	38.2 Kuic, Inc.	-3.79	5.64
240A Healdsburg	KRSH	LIC CX CA	327.3 147.1	30.01 BLH-20050322ADG	38 44 08 122 50 55	2.650 447	575 3.3	46.3 Deas Communications, Inc.	6.93	-17.13*
292A Jenner	AP292	APP ZCX CA	264.7 84.6	24.29 BNPH-20060309ADJ	38 29 18 122 56 19	6.000 151	197 37.4	34.2 Ace Radio Corporation	10.0R	14.3M
239B San Francisco	KZBR	LIC CN CA	167.7 347.9	93.01 BMLH-19930914KB	37 41 23 122 26 12	6.900 363	450 75.3	63.9 Bonneville Holding Company	9.39	11.60
292A Jenner	AP292	APP CA	271.1 90.7	46.62 BSFH-20050812AWL	38 30 55 123 11 45	0.000 -262	0 0.0	0.0 Ace Radio Corporation	10.0R	36.6M
292A Jenner	AU062	VAC CA	271.1 90.7	46.62 RM-9816	38 30 55 123 11 45	6.000	262 15.9	15.8 Brian Costello	10.0R	36.6M
235B San Francisco	KYLD	LIC CN CA	167.7 347.9	93.05 BLH-7071	37 41 22 122 26 10	30.000 338	425 7.5	77.0 Amfm Broadcasting Licenses	77.18	15.73
238D Yuba City	K238AV	CP DC CA	43.0 223.5	106.43 BNPFT-20030807ABI	39 12 20 121 49 10	0.000 645	677 0.0	0.0 Educational Media Foundation	98.80	80.62
237D Vallejo	KUICF2	LIC DVN CA	140.7 321.0	56.10 BLFTB-19960111TF	38 07 02 122 15 20	0.137 51	70 11.3	7.9 Quick Broadcasting Corporation	35.95	35.61
241B Sacramento	KYMX	LIC CN CA	81.3 262.0	97.62 BLH-19850313KK	38 38 09 121 33 11	50.000 145	152 5.9	64.4 Infinity Radio Inc.	87.30	32.99
241D San Rafael	AP241	APP DC CA	174.1 354.2	64.65 BNPFT-20030313ASS	37 55 45 122 35 10	0.010 584	773 0.2	13.5 Educational Media Foundation	55.19	51.00
237B Ft. Bragg	KOZT	LIC NC CA	317.4 136.8	136.35 BLH-20000925AAW	39 24 24 123 44 04	35.000 97	273 64.0	53.2 California Radio Partners	50.59	37.47
291D Walnut Creek	KMELF2	LIC DE CA	132.5 312.9	78.49 BLFTB-20030408AAS	38 01 48 122 00 04	0.005 176	230 6.4	6.4 Amfm Broadcasting Licenses	3.2R	75.3M
291B San Francisco	KMEL	LIC CN CA	167.8 347.9	92.97 BLH-6755	37 41 24 122 26 13	69.000 359	446 86.7	86.9 Amfm Broadcasting Licenses	15.0R	78.0M
237D Daly City	AP237	APP DC CA	167.8 347.9	92.97 BNPFT-20030314CDO	37 41 24 122 26 13	0.017 295	382 16.5	11.5 Big Bend Broadcasting	68.11	69.43
237D Daly City	AP237	APP DC CA	167.6 347.8	93.30 BNPFT-20030314BSQ	37 41 15 122 26 01	0.007 376	463 14.5	10.2 Educational Media Foundation	70.45	71.04

ERP and HAAT on direct-line with reference station.

"\*"affixed to 'IN' or 'Out' values = site inside protected contour.



**K238AF Proposed**  
Latitude: 38-30-31 N  
Longitude: 122-39-41 W  
ERP: 0.24 kW  
Channel: 238D  
Frequency: 95.5 MHz  
AMSL Height: 502.9 m

**Graham Brock, Inc. - Broadcast Technical Consultants**

**KUIC**  
BLH-19990608KA  
Latitude: 38-23-44 N  
Longitude: 122-05-56 W  
ERP: 0.49 kW  
Channel: 237B1  
Frequency: 95.3 MHz  
AMSL Height: 877.0 m

**KZBR**  
BMLH-19930914KB  
Latitude: 37-41-23 N  
Longitude: 122-26-12 W  
ERP: 6.90 kW  
Channel: 239B  
Frequency: 95.7 MHz  
AMSL Height: 450.0 m

**K238AE**  
BLFT-19971210TB  
Latitude: 39-02-47 N  
Longitude: 122-45-54 W  
ERP: 0.03 kW  
Channel: 238D  
Frequency: 95.5 MHz  
AMSL Height: 628.0 m

**K238AF 48 dBu (50/10)**

**K238AF 51 dBu (50/10)**

**K238AF 40 dBu (50/10)**

**K238AE 60 dBu (50/50)**

**K238AE 40 dBu (50/10)**

**K238AF 60 dBu (50/50)**

**KZBR 54 dBu (50/50)**

**KUIC 57 dBu (50/50)**

**EXHIBIT B2**  
**MINOR CHANGE APPLICATION**  
**SINCLAIR TELECABLE, INC.**  
**K238AF FM TRANSLATOR**  
**CH 238D - 95.5 MHZ - 0.240 KW (DA)**  
**SANTA ROSA, CALIFORNIA**  
**March 2006**

Scale 1:1,200,000

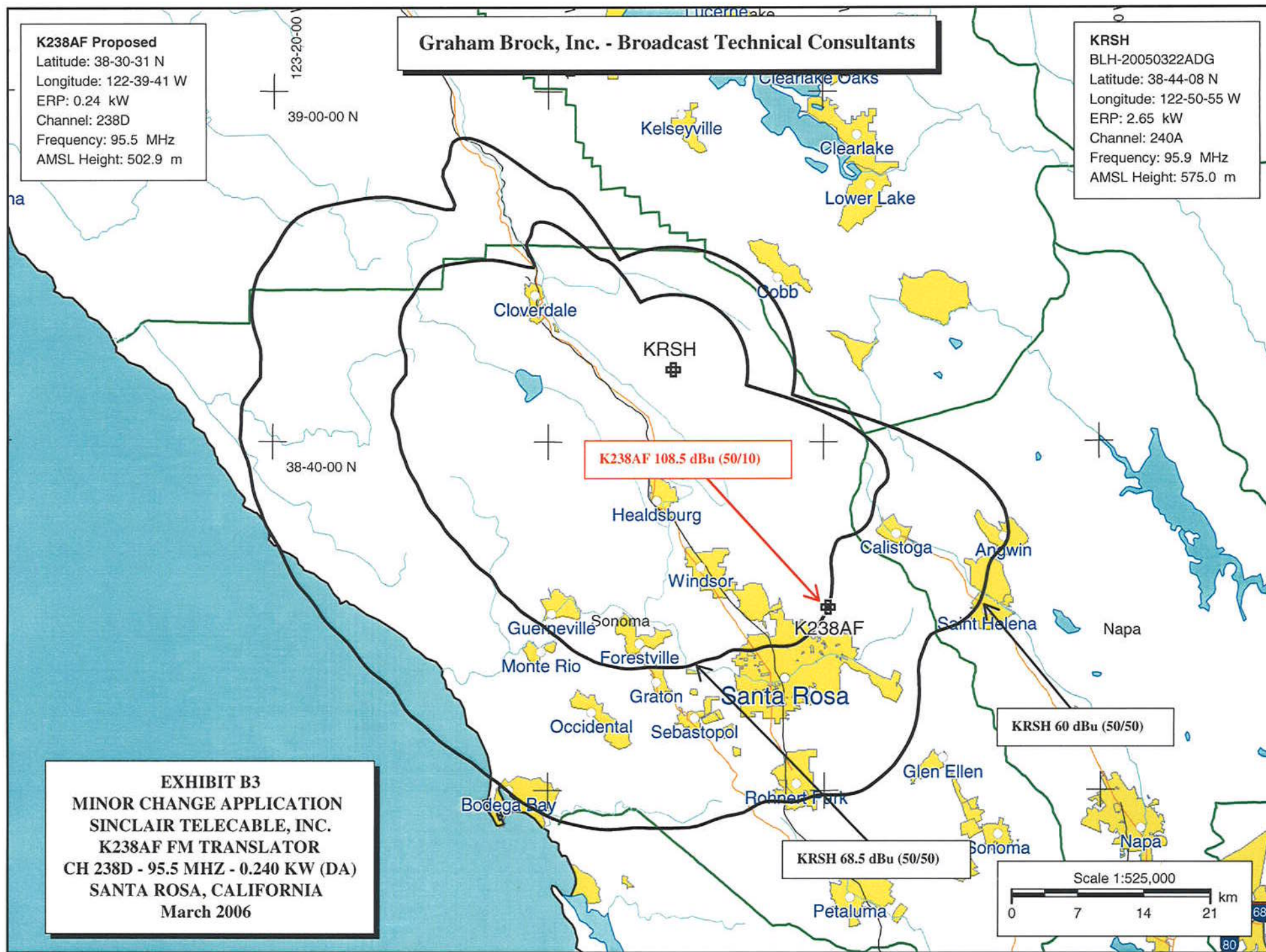




**Graham Brock, Inc. - Broadcast Technical Consultants**

**K238AF Proposed**  
Latitude: 38-30-31 N  
Longitude: 122-39-41 W  
ERP: 0.24 kW  
Channel: 238D  
Frequency: 95.5 MHz  
AMSL Height: 502.9 m

**KRSH**  
BLH-20050322ADG  
Latitude: 38-44-08 N  
Longitude: 122-50-55 W  
ERP: 2.65 kW  
Channel: 240A  
Frequency: 95.9 MHz  
AMSL Height: 575.0 m



**EXHIBIT B3**  
**MINOR CHANGE APPLICATION**  
**SINCLAIR TELECABLE, INC.**  
**K238AF FM TRANSLATOR**  
**CH 238D - 95.5 MHZ - 0.240 KW (DA)**  
**SANTA ROSA, CALIFORNIA**  
**March 2006**

**MINOR CHANGE APPLICATION**  
**SINCLAIR TELECABLE, INC.**  
**K238AF FM TRANSLATOR STATION**  
**CH 238D - 95.5 MHZ - 0.240 KW (DA)**  
**SANTA ROSA, CALIFORNIA**  
**March 2006**

**EXHIBIT B4**

Predicted contour:

N. Lat. = 38 30 31 - Tabulated protected and interfering contour data  
W. Lng. = 122 39 41 - K238AF FM Translator station - Santa Rosa, California

HAAT and Distance to Contour - FCC Method - 30 Arc Second terrain database

Azi.	HAAT	ERP kW	dBk	Field	60-F5	40-F1	48-F1	51-F1	108.5-F1
000	242.4	0.0087	-20.62	0.190	8.76	29.18	18.28	14.55	0.08
010	161.6	0.0043	-23.66	0.134	5.95	20.03	11.94	10.10	0.05
020	210.5	0.0048	-23.15	0.142	6.94	23.70	13.95	11.83	0.06
030	231.5	0.0059	-22.28	0.157	7.70	26.05	15.85	12.98	0.06
040	172.7	0.0079	-21.04	0.181	7.17	24.28	14.32	12.10	0.07
050	183.8	0.0084	-20.76	0.187	7.51	25.42	15.24	12.66	0.08
060	155.2	0.0070	-21.54	0.171	6.61	22.26	13.14	11.12	0.07
070	179.8	0.0047	-23.28	0.140	6.40	21.76	12.88	10.91	0.06
080	105.4	0.0036	-24.40	0.123	4.61	14.50	9.24	7.76	0.05
090	78.7	0.0044	-23.59	0.135	4.17	13.12	8.32	6.97	0.06
100	103.5	0.0061	-22.12	0.160	5.27	17.02	10.42	8.78	0.07
110	-11.4	0.0079	-21.00	0.182	2.97	9.59	5.97	5.01	0.07
120	56.1	0.0089	-20.49	0.193	4.26	13.37	8.49	7.06	0.08
130	202.9	0.0079	-21.00	0.182	7.78	26.27	15.98	13.08	0.07
140	297.9	0.0061	-22.12	0.160	8.86	29.58	18.50	14.88	0.07
150	284.5	0.0044	-23.59	0.135	7.85	26.62	16.27	13.38	0.06
160	268.4	0.0036	-24.40	0.123	7.22	24.75	14.67	12.43	0.05
170	330.3	0.0047	-23.28	0.140	8.60	29.16	18.12	14.67	0.06
180	343.7	0.0070	-21.54	0.171	9.83	33.12	20.72	17.00	0.07
190	400.2	0.0084	-20.76	0.187	11.04	38.04	23.63	19.68	0.08
200	440.7	0.0079	-21.04	0.181	11.29	39.62	24.56	20.51	0.07
210	441.1	0.0059	-22.28	0.157	10.41	36.88	22.86	18.95	0.06
220	435.6	0.0048	-23.15	0.142	9.76	34.72	21.54	17.72	0.06
230	433.0	0.0043	-23.66	0.134	9.39	33.53	20.81	17.04	0.05
240	430.1	0.0087	-20.62	0.190	11.48	40.03	24.84	20.77	0.08
250	426.5	0.0260	-15.85	0.329	15.14	51.75	32.80	27.37	0.13
260	424.9	0.0669	-11.75	0.528	19.27	62.67	41.77	35.06	0.22
270	439.7	0.1237	-9.08	0.718	22.78	71.74	49.37	41.82	0.29
280	416.5	0.1800	-7.45	0.866	24.32	74.67	52.16	44.39	0.35
290	391.6	0.2175	-6.63	0.952	24.75	74.93	52.66	44.86	0.39
300	329.0	0.2400	-6.20	1.000	23.36	70.33	48.94	41.62	0.41
310	290.4	0.2175	-6.63	0.952	21.48	65.45	44.91	38.11	0.39
320	320.3	0.1800	-7.45	0.866	21.53	66.00	45.13	38.25	0.35
330	279.2	0.1237	-9.08	0.718	18.32	57.86	38.55	32.31	0.29
340	247.2	0.0669	-11.75	0.528	14.59	48.47	30.98	26.15	0.22
350	278.6	0.0260	-15.85	0.329	12.35	41.21	25.97	21.89	0.13

AMSL= 502.9 M



# GRAHAM BROCK, INC.

BROADCAST TECHNICAL CONSULTANTS

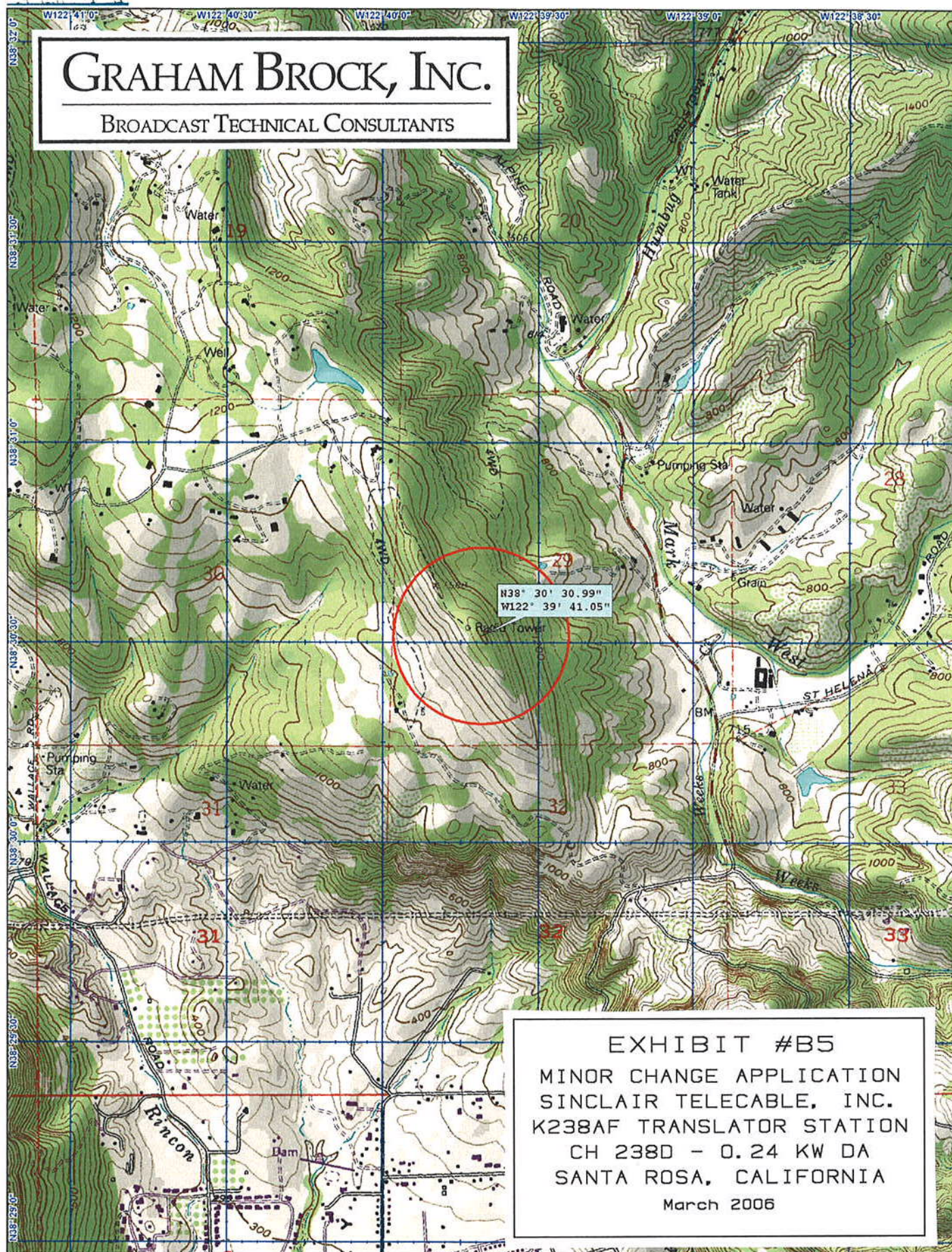


EXHIBIT #B5  
MINOR CHANGE APPLICATION  
SINCLAIR TELECABLE, INC.  
K238AF TRANSLATOR STATION  
CH 238D - 0.24 KW DA  
SANTA ROSA, CALIFORNIA  
March 2006

