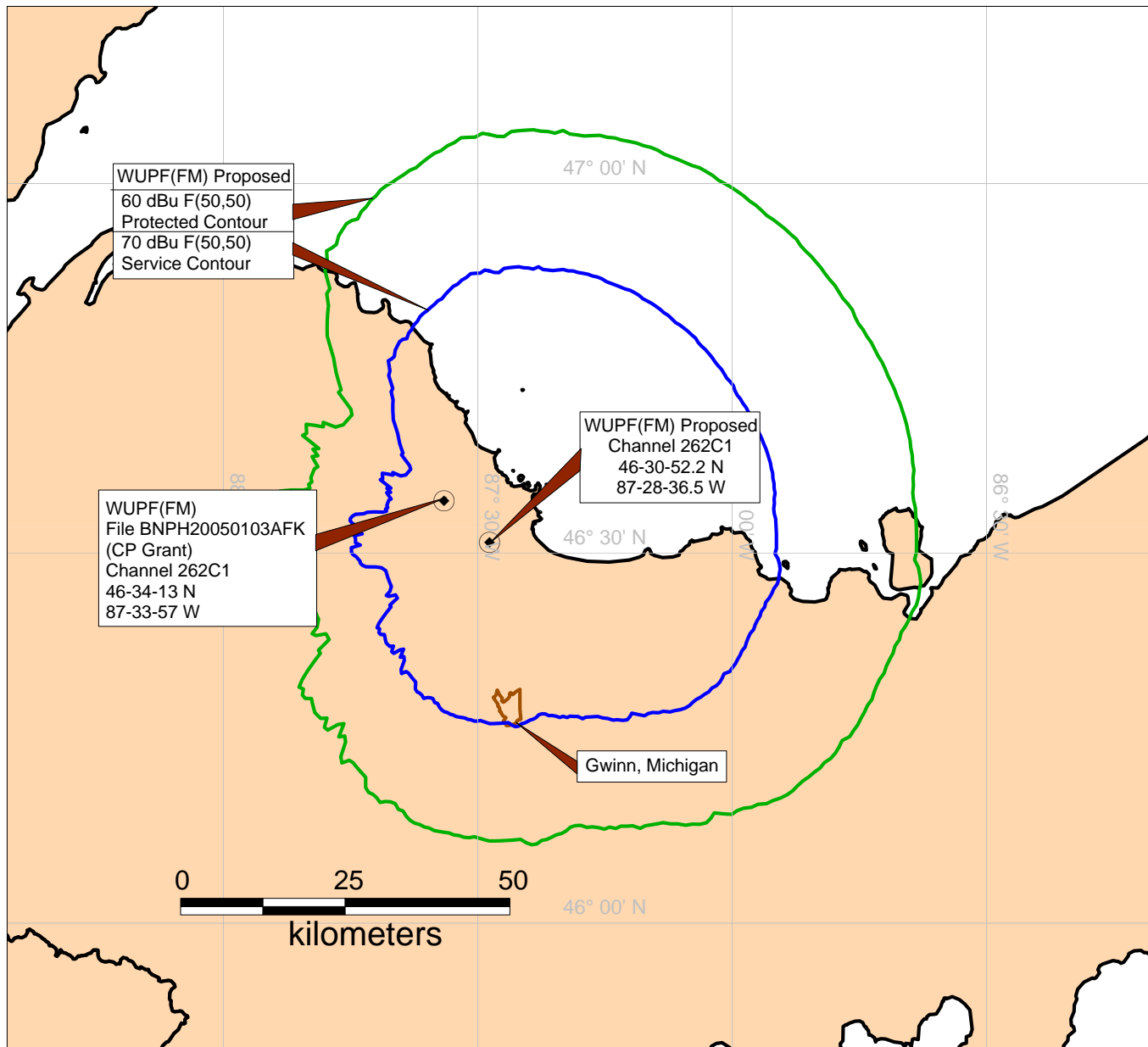


EXHIBIT 24
SERVICE TO COMMUNITY OF LICENSE
APPLICATION FOR MINOR MODIFICATION OF CONSTRUCTION PERMIT
RADIOACTIVE, LLC
FCC FILE NUMBER BNPH-20050103AFK
WUPF(FM), GWINN, MICHIGAN
CH 262C1 66 KW (H&V) 464.8 METERS AMSL
FACILITY ID # 164244

Radioactive, LLC (hereinafter Radioactive) has an issued construction permit (FCC File Number BNPH-20050103AFK) for a new commercial FM broadcast station to operate on channel 262C1 (100.3 megahertz) at Gwinn, Michigan. By this application, Radioactive seeks to locate the station at an existing communications site. In addition, this amendment specifies a change in antenna radiation center height. The proposed site is located at geographic coordinates 46° 30' 52.2" North Latitude, 87° 28' 36.5" West Longitude (NAD27). The proposed station will operate with a maximum effective radiated power (ERP) of 66 kilowatts (kW), circularly polarized, with antenna radiation center at 464.8 meters above mean sea level and a height above average terrain (HAAT) of 139 meters. The antenna radiation center height above ground level (AGL) will be 85.3 meters.

The total area of the community of Gwinn, Michigan is 13.2 km². Attached Figures 1 and 2 illustrate how the calculated 70 dBμ contour from the proposed facility encompasses 12.9 km² or 97.9% of Gwinn. Further analysis using data from the 2000 US Census indicates that 1965 persons or 100% of the population of Gwinn will receive 70 dBμ service.



COVERAGE STUDY

RADIOACTIVE, LLC
STATION WUPF(FM) GWINN, MICHIGAN
FACILITY ID NUMBER 164244
CH 262C1 66 KW (H&V) 464.8 METERS AMSL

MARCH 2008

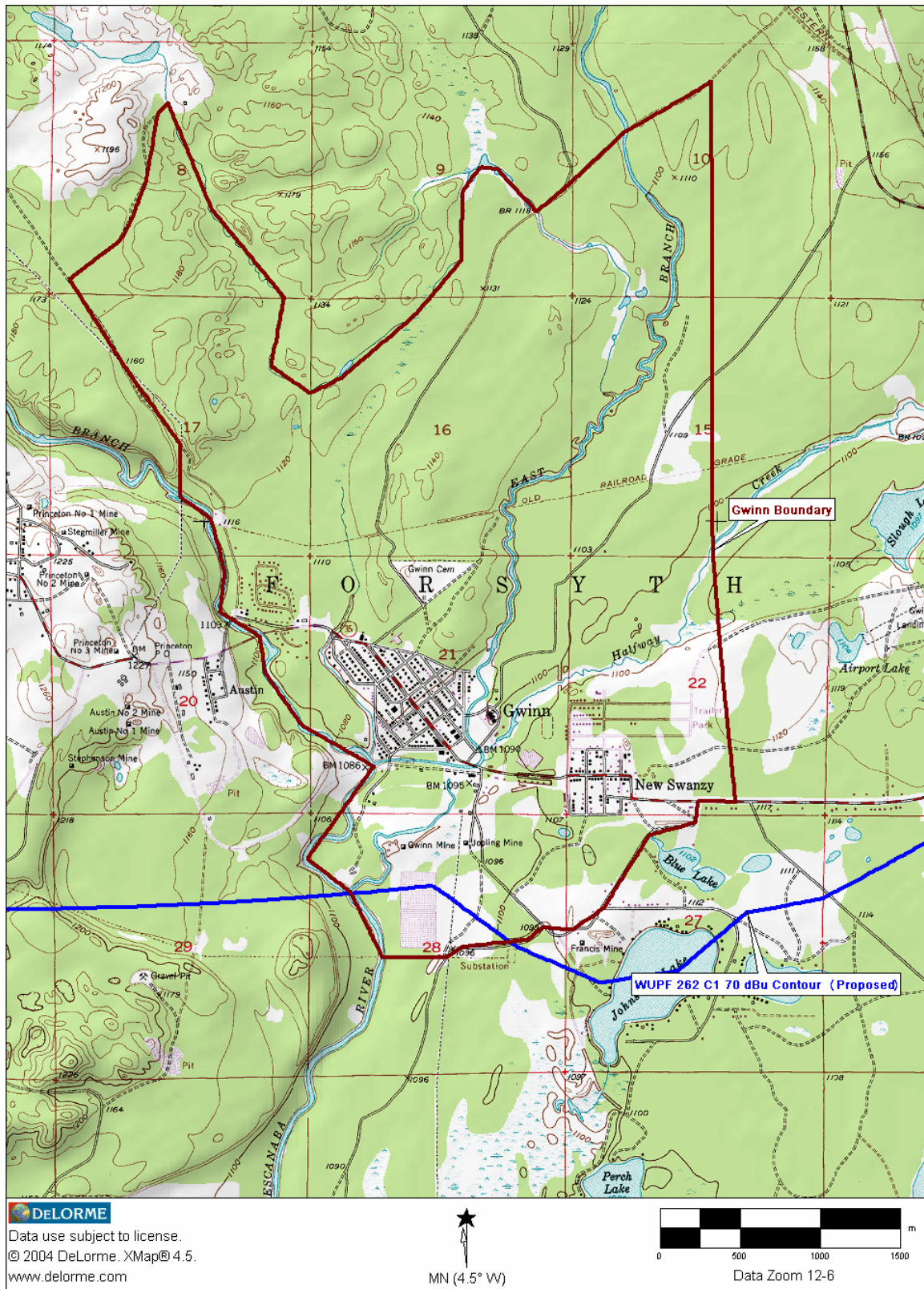


Figure 2

Service to Community of License Detail