

**DELAWDER COMMUNICATIONS, INC.**

P.O. Box 1095  
Ashburn, Virginia 20146-1095  
(703) 299-9222

**ENGINEERING REPORT**

---

**San Antonio, TX, Channel 260D FM Translator Application**

**ENGINEERING STATEMENT**

Claro Communications, LTD. ("Applicant") proposes this minor change to the K260CC FM translator station near San Antonio, TX. This filing includes a site change and, due to 60 dBu service contour overlap with the K260CC construction permit facility (see attached Figure EE1), is deemed a minor change proposal.

**PROTECTION TO KLHB AND KYRK**

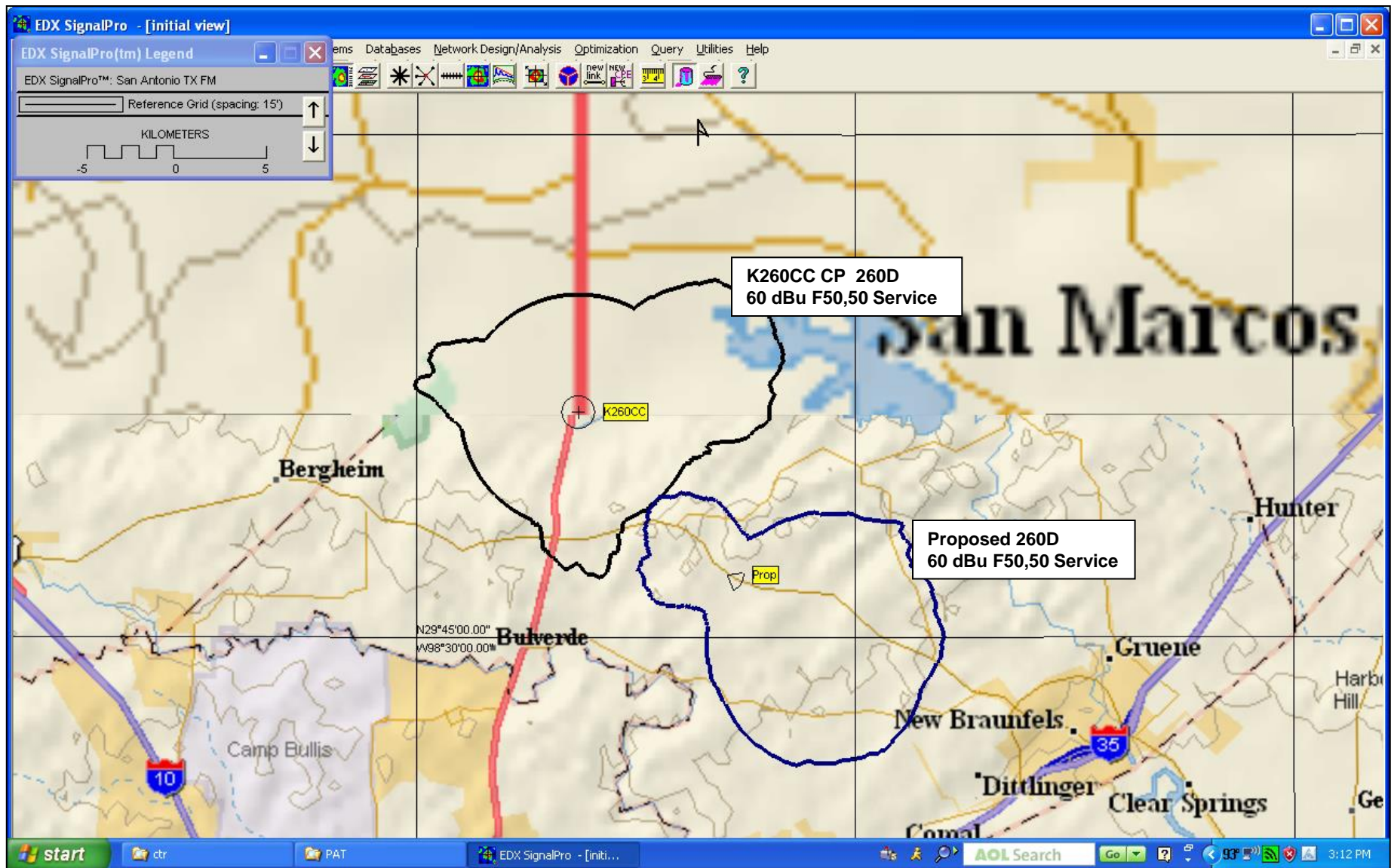
KISS-FM, San Antonio, TX, 258C0 (56.4 kilometers at 174 degrees True bearing) and KCYF(FM), San Antonio, TX, 262C0 (48.2 kilometers at 234 degrees True bearing) are second/third adjacent-channel to the proposed channel 260D facility. The 60 dBu F50,50 service contour of both stations extends well beyond the proposed 260D transmitter site. Using the well-established *Living Way Ministries* Methodology, no actual interference to any population is predicted to exist to KISS-FM and KCYF.

Note that a rule waiver of Section 74.1204 for this second/third adjacent-channel protection using the well-established *Living Way Ministries* Methodology is respectfully requested if such a rule waiver is deemed necessary for protection to these two stations.

The F50,50 signal strength from KISS-FM at the proposed 260D transmitter site is greater than 71 dBu (the "desired" signal). The F50,50 signal strength from KCYF at the proposed 260D transmitter site is also greater than 71 dBu (the "desired" signal). The second/third adjacent-channel protection of Section 74.1204 is an undesired-to-desired ("U/D") dB signal strength ratio of 40:1. Therefore, predicted interference to the worst-case of these two protected stations is a signal of greater than or equal to 111 dBu.

The 111 dBu signal based on a free space field determination is predicted to extend out to 191 meters from the proposed 260D transmitter site. As shown by the attached aerial photograph of the proposed site (Figure EE2), *there is no population, buildings or major roads located within 191 meters of the base of the 260D facility.* Therefore, pursuant to Section 74.1204(d) of the FCC Rules, KISS-FM and KCYF are adequately protected by the proposed facility.

**FIGURE EE1: PROPOSED CONTOUR OVERLAP (WITH CP) MAP**







Google earth

feet 1000  
meters 300  
191 meters



FIGURE EE2: Aerial Map of Proposed Site