

TECHNICAL EXHIBIT  
DTV MAXIMIZATION APPLICATION  
STATION WDCW(DT)  
WASHINGTON, DC  
CH 50    1000 KW    253 M

Technical Narrative

This Technical Exhibit supports an application for digital television (DTV) station WDCW(DT) for its "maximized" DTV operation at Washington, DC. This application requests a construction permit (CP) for WDCW(DT) digital television operation on channel 50 at Washington with a non-directional effective radiated power of 1000 kilowatts.

Proposed Facilities

Station WDCW(DT) proposes to operate DTV channel 50 from its pending DTV application facility. The antenna height above average terrain for the channel 50 DTV operation will be 253 meters. The proposed WDCW(DT) effective radiated power exceeds the Commission's *Appendix B* allocated maximum effective radiated power in some azimuthal directions for WDCW(DT).<sup>1</sup> Therefore, an allocation study was completed to ensure no prohibited interference would occur.

---

<sup>1</sup> See Seventh Report And Order And Eighth Further Notice Of Proposed Rule Making in the Matter of Advanced Television Systems and their Impact Upon the Existing Television Broadcast Service, MB Docket 87-268, Released August 6, 2007; Adopted August 1, 2007.

The proposed DTV transmitter site will be located at the authorized WDCW(DT) tower. Therefore, the proposed site location is:

38° 57' 44" North Latitude  
77° 01' 36" West Longitude

A sketch of antenna and pertinent elevations are included as Figure 1.

The Appendix contains the plane radiation pattern for the proposed antenna system.

Figure 2 is a map showing the proposed DTV predicted coverage contour and the associated DTV appendix B Noise-Limited coverage contour. The extent of the contours have been calculated using the normal FCC prediction method. The Washington city limits were derived from information contained in the 2000 U.S. Census of Population and Housing.

#### Population Served

The herein proposed WDCW(DT) "maximized" facility is predicted to serve 7,198,122 persons, post-transition based upon the 2000 Census. WDCW(DT)'s associated Appendix B facility is predicted to serve 6,767,000 persons. Therefore, the herein proposed WDCW(DT) facility would serve more than 100% of WDCW(DT)'s Appendix B population.

#### Allocation Considerations

The proposed WDCW(DT) Channel 50 facility meets the requirements of Section 73.623 of the FCC Rules concerning

predicted interference to other Appendix B DTV allotments. Longley-Rice interference analyses were conducted pursuant to the requirements of the FCC Rules; OET Bulletin No. 69; and published FCC guidelines for preparation of such interference analyses. The Longley-Rice interference analyses were conducted using the software developed by du Treil, Lundin & Rackley, Inc. based on the FCC published software routines.<sup>2</sup> Stations selected for analysis were determined pursuant to the distance requirements outlined in the FCC DTV Processing Guidelines Public Notice. The results of the interference analyses for the proposed WDCW(DT) facility are summarized herein at Figure 3. As indicated therein, the proposed facility will meet the 0.5% criterion outlined in the FCC Rules and published guidelines with respect to all considered stations.<sup>3</sup>

#### Radiofrequency Electromagnetic Field Exposure

The proposed WDCW(DT) facilities were evaluated in terms of potential radiofrequency electromagnetic field exposure at ground level to workers and the general public. The radiation center for the proposed WDCW(DT) antenna is located 224 meters above ground level. The maximum effective radiated power is 1000 kilowatts. A "worst case" downward relative field value of 0.15 is assumed for the antenna's downward radiation. The calculated power density at a point 2 meters above ground level is 0.015 mW/cm<sup>2</sup>.

---

<sup>2</sup> The duTreil, Lundin & Rackley, Inc. DTV interference analysis program is based on the program and procedures outlined by the FCC in the Sixth Report and Order; subsequent Memorandum Opinion and Order; and FCC OET Bulletin No. 69. A nominal grid size resolution of 2 km was employed.

<sup>3</sup> Interference analysis results reflect the net change in interference to a given station considering the interference predicted to occur from all other stations (i.e. "masking") including the allotment facility for WDCW(DT). This properly reflects the net interference change for determining compliance with the FCC 0.5% *de minimis* standard.

This is less than 5 percent of the Commission's recommended limit of  $0.46 \text{ mW/cm}^2$  for channel 50 for an "uncontrolled" environment.

Access to the transmitting site is restricted and appropriately marked with warning signs. As this is a multi-user site an agreement between the stations will control access. In the event that workers or other authorized personnel enter restricted areas or climb the tower, appropriate measures will be taken to assure worker safety with respect to radio frequency radiation exposure. Such measures include reducing the average exposure by spreading out the work over a longer period of time, wearing "accepted" RFR protective clothing and/or RFR exposure monitors or scheduling work when the stations are at reduced power or shut down. The proposed WDCW(DT) operation appears to be otherwise categorically excluded from environmental processing.

It is noted that this statement only addresses the potential for radiofrequency electromagnetic field exposure. All other aspects of the environmental processing analysis will be or already have been provided to the FCC by the tower owner.

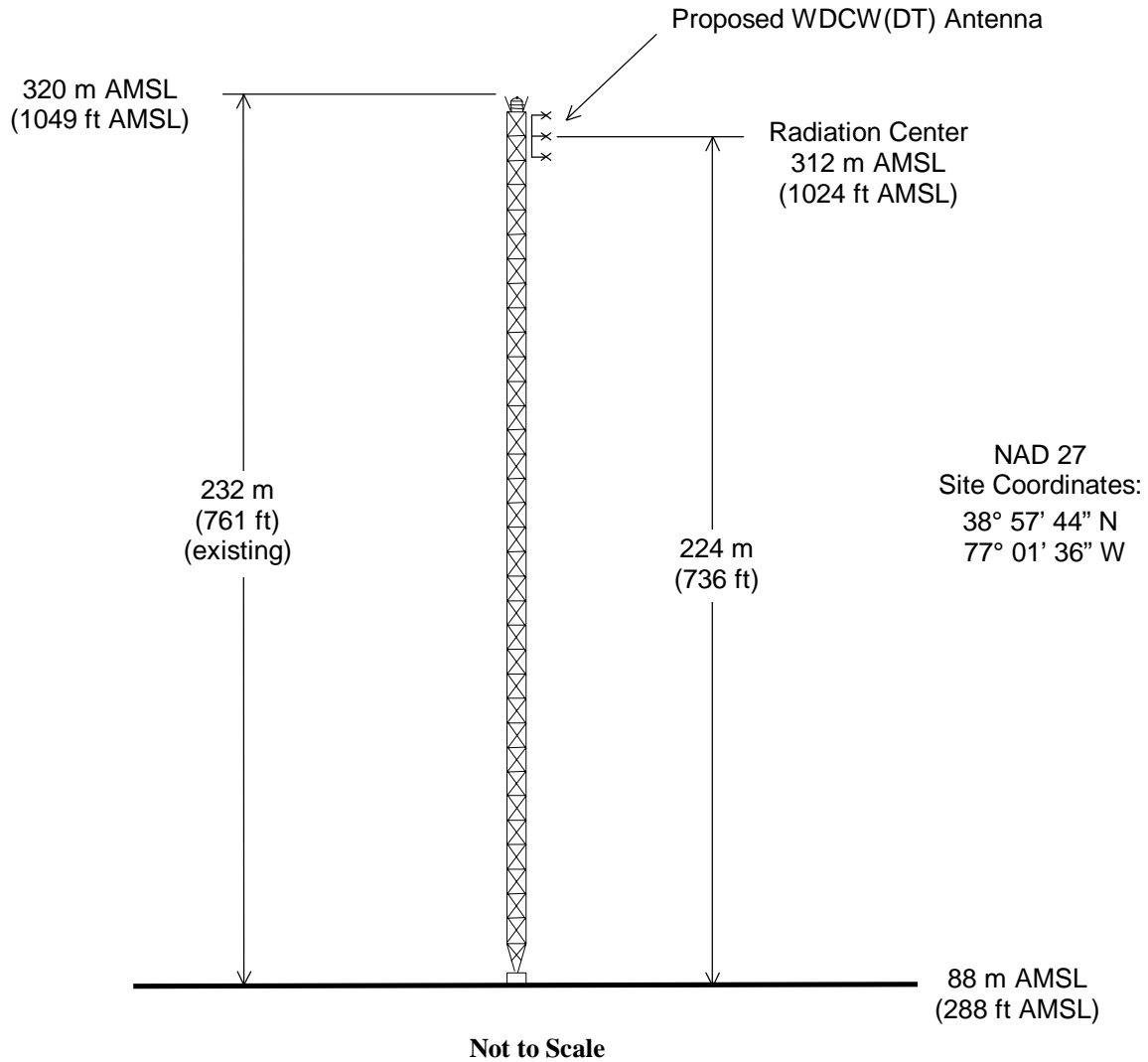
Charles Cooper

du Treil, Lundin & Rackley, Inc.  
201 Fletcher Avenue  
Sarasota, Florida 32437  
941.329.6000

June 11, 2008



ASR: 1036576



## ANTENNA AND SUPPORTING STRUCTURE

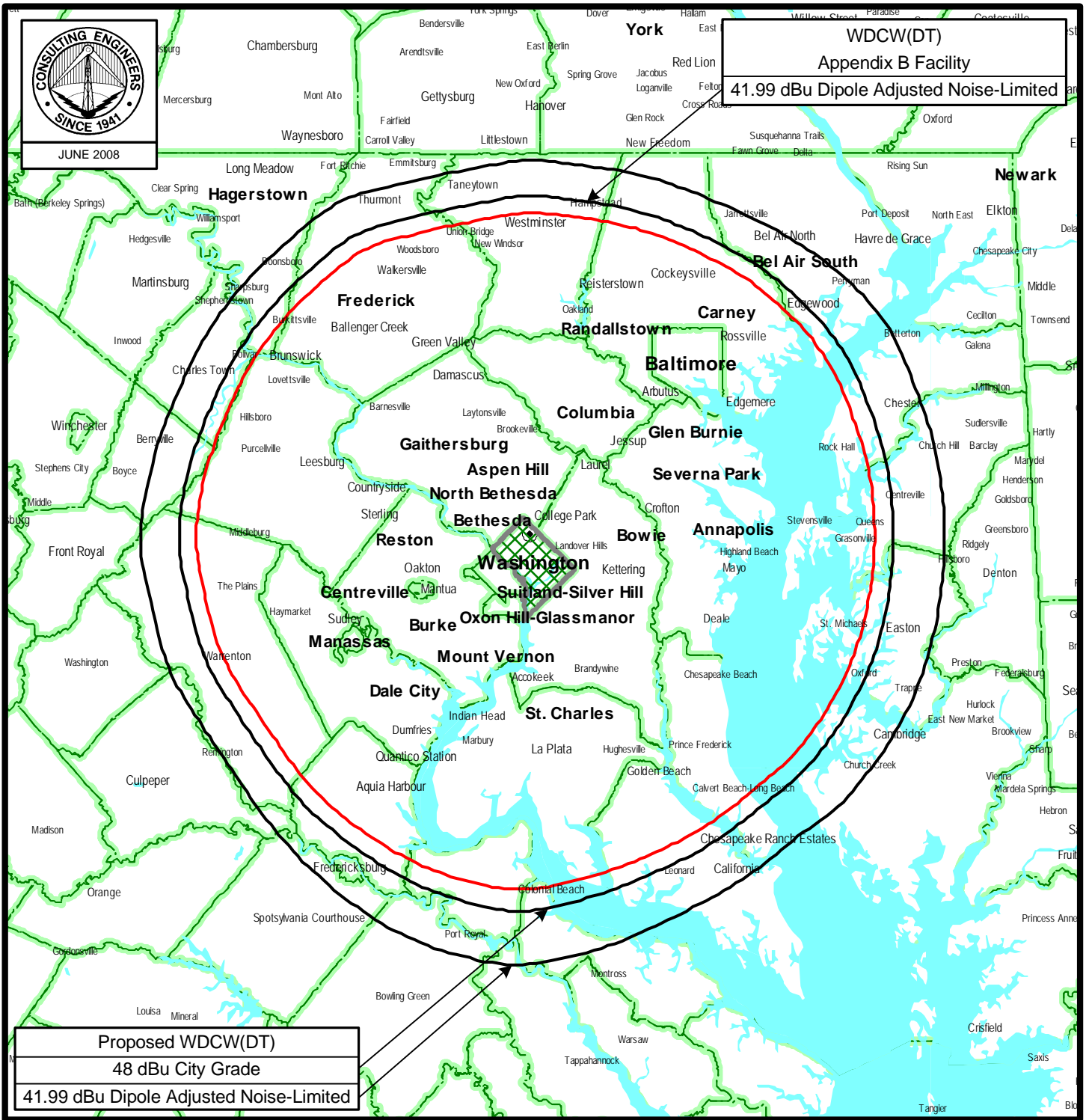
DTV STATION WDCW(DT)

WASHINGTON, DC

CH 50 1000 KW 253 M

du Treil, Lundin &amp; Rackley, Inc. Sarasota, Florida

**Figure 2**



## **PREDICTED COVERAGE CONTOURS**

**STATION WDCW(DT)**

**WASHINGTON, DC**

**CH 50 1000 KW 253 M**

du Treil, Lundin & Rackley, Inc Sarasota, Florida

Figure 3

TW Census data selected 2000  
Post Transition Data Base Selected /export/home/cdb/pt\_tvdb.sff

#### TV INTERFERENCE and SPACING ANALYSIS PROGRAM

Date: 06-11-2008 Time: 17:23:56

Record Selected for Analysis

WDCW USERRECORD-01 WASHINGTON DC US  
Channel 50 ERP 1000. kW HAAT 253. m RCAMSL 00312 m  
Latitude 038-57-44 Longitude 0077-01-36  
Status APP Zone 1 Border  
Last update Cutoff date Docket  
Comments  
Applicant

Cell Size for Service Analysis 2.0 km/side

Distance Increments for Longley-Rice Analysis 1.00 km

Facility meets maximum height/power limits

Azimuth (Deg)	ERP (kW)	HAAT (m)	41.0 dBu F(50,90) (km)
0.0	1000.000	209.7	84.4
45.0	1000.000	258.8	90.7
90.0	1000.000	279.5	94.1
135.0	1000.000	269.8	92.6
180.0	1000.000	302.0	97.1
225.0	1000.000	235.2	87.1
270.0	1000.000	242.4	88.0
315.0	1000.000	225.7	86.0

#### Evaluation toward Class A Stations

Station inside contour of Class A station  
WMDO-CA 47 WASHINGTON DC BLTTA 20080428AAQ

#### Class A Evaluation Complete

Proposed facility is 28.7km from FCC Monitoring station at  
Laurel MD  
Bearing: 38.1 degrees ERP: 1000.00 kW HAAT: 245.7 m  
Field = 35.1 mV/m

Proposed facility OK toward West Virginia quiet zone

Figure 3

Proposed facility OK toward Table Mountain

Proposed facility is beyond the Canadian coordination distance

Proposed facility is beyond the Mexican coordination distance

Proposed station is OK toward AM broadcast stations

\*\*\*\*\*  
Start of Interference Analysis

Channel	Call	City/State	ARN
50	WDCW	WASHINGTON DC	USERRECORD01

#### Stations Potentially Affected by Proposed Station

Chan	Call	City/State	Dist(km)	Status	Application	Ref. No.
47	WMDO-CA	WASHINGTON DC	5.4	LIC	BLTTA	-20080428AAQ
48	WAZW-CA	WINCHESTER VA	102.8	LIC	BLTT	-19990105JC
49	WHSV-TV	HARRISONBURG VA	144.8	LIC	BLCDT	-20060413ACO
49	WHSV-TV	HARRISONBURG VA	144.8	PLN	DTVPLN	-DTVP1755
50	WQLN	ERIE PA	428.0	LIC	BLEDT	-20060601BCQ
50	WQLN	ERIE PA	428.0	PLN	DTVPLN	-DTVP1775
50	WQLN	ERIE PA	428.0	APP	BMPEDT	-20000412AAR
50	WPCB-TV	GREENSBURG PA	284.3	LIC	BLCDT	-20030409ABC
50	WPCB-TV	GREENSBURG PA	284.3	PLN	DTVPLN	-DTVP1776
50	WTLU-CA	LYNCHBURG VA	282.6	LIC	BLTTA	-20040812AAE
50	WGNT	PORTSMOUTH VA	244.1	LIC	BLCDT	-20020718AAK
50	WGNT	PORTSMOUTH VA	244.1	PLN	DTVPLN	-DTVP1780
50	WOAY-TV	OAK HILL WV	375.9	LIC	BLCDT	-20070426AAK
50	WOAY-TV	OAK HILL WV	375.9	PLN	DTVPLN	-DTVP1784

\*\*\*\*\*

#### Analysis of Interference to Affected Station 1

#### Analysis of current record

Channel	Call	City/State	Application	Ref. No.
47	WMDO-CA	WASHINGTON DC	BLTTA	-20080428AAQ

#### Stations Potentially Affecting This Station

Chan	Call	City/State	Dist(km)	Status	Application	Ref. No.
39	WJAL	HAGERSTOWN MD	130.2	CP MOD	BMPEDT	-20080528ABT
39	WJAL	HAGERSTOWN MD	130.3	PLN	DTVPLN	-DTVP1408
40	WNUV	BALTIMORE MD	57.7	LIC	BLCDT	-20051011AOI
40	WNUV	BALTIMORE MD	57.7	PLN	DTVPLN	-DTVP1440
44	WDPB	SEAFORD DE	131.2	LIC	BLEDT	-20050624AAK
44	WDPB	SEAFORD DE	131.2	PLN	DTVPLN	-DTVP1567
44	WDPB	HAGERSTOWN MD	110.0	LIC	BLEDT	-20031029ACE
44	WDPB	HAGERSTOWN MD	110.0	PLN	DTVPLN	-DTVP1578
46	WBFF	BALTIMORE MD	57.7	CP	BPCDT	-19980803KR

Figure 3

46	WBFF	BALTIMORE MD	57.7	PLN	DTVPLN	-DTVP1647
47	WMDT	SALISBURY MD	126.6	LIC	BLCT	-20030703ABJ
47	WMDT	SALISBURY MD	126.7	PLN	DTVPLN	-DTVP1677
47	WMDT	SALISBURY MD	126.5	CP	BPCDT	-20080215AEU
47	WRPX	ROCKY MOUNT NC	330.1	LIC	BLCT	-19960709KN
47	WNJU	LINDEN NJ	327.7	CP	BPCT	-19991028AAN
47	WKBS-TV	ALTOONA PA	215.2	LIC	BLCT	-19850925KE
47	WPMT	YORK PA	127.8	LIC	BMLCDT	-20041025ABI
47	WPMT	YORK PA	127.8	PLN	DTVPLN	-DTVP1687
47	WUPV	ASHLAND VA	134.0	LIC	BLCDT	-20060210ABA
47	WUPV	ASHLAND VA	134.0	PLN	DTVPLN	-DTVP1694
48	WRC-TV	WASHINGTON DC	0.0	LIC	BLCDT	-20000216AAT
48	WRC-TV	WASHINGTON DC	0.0	PLN	DTVPLN	-DTVP1701
49	WHSV-TV	HARRISONBURG VA	139.6	LIC	BLCDT	-20060413ACO
49	WHSV-TV	HARRISONBURG VA	139.6	PLN	DTVPLN	-DTVP1755
50	WDCW	WASHINGTON DC	5.4	PLN	DTVPLN	-DTVP1762
62	WFPT	FREDERICK MD	40.8	CP	BPET	-20030609ACZ
50	WDCW	WASHINGTON DC	5.4	APP	USERRECORD-01	

Proposal causes no interference

#####

#### Analysis of Interference to Affected Station 2

##### Analysis of current record

Channel	Call	City/State	Application Ref. No.
48	WAZW-CA	WINCHESTER VA	BLTT -19990105JC

#### Stations Potentially Affecting This Station

Chan	Call	City/State	Dist(km)	Status	Application Ref. No.
40	WNUV	BALTIMORE MD	132.5	LIC	BLCDT -20051011AOI
40	WNUV	BALTIMORE MD	132.5	PLN	DTVPLN -DTVP1440
41	WUTB	BALTIMORE MD	122.5	CP MOD	BMPCDT -20051118ADM
41	WUTB	BALTIMORE MD	122.5	PLN	DTVPLN -DTVP1475
41	WHTJ	CHARLOTTESVILLE VA	137.4	LIC	BLET -19890421KE
44	WHPB	HAGERSTOWN MD	53.6	LIC	BLEDT -20031029ACE
44	WHPB	HAGERSTOWN MD	53.6	PLN	DTVPLN -DTVP1578
46	WBFF	BALTIMORE MD	132.5	CP	BPCDT -19980803KR
46	WBFF	BALTIMORE MD	132.5	PLN	DTVPLN -DTVP1647
46	WHTJ	CHARLOTTESVILLE VA	137.4	LIC	BLEDT -20050819ADO
46	WHTJ	CHARLOTTESVILLE VA	137.4	PLN	DTVPLN -DTVP1661
48	WRC-TV	WASHINGTON DC	98.9	LIC	BLCDT -20000216AAT
48	WRC-TV	WASHINGTON DC	98.9	PLN	DTVPLN -DTVP1701
48	WRAL-TV	RALEIGH NC	392.6	CP	BPCDT -20080319AAE
48	WRAL-TV	RALEIGH NC	392.6	PLN	DTVPLN -DTVP1713
48	WGTW-TV	BURLINGTON NJ	268.5	LIC	BLCT -19920821KF
48	WYDC	CORNING NY	343.4	PLN	DTVPLN -DTVP1715
48	WYDC	CORNING NY	340.3	CP	BPCT -20010123ABG
48	WPXI	PITTSBURGH PA	210.0	LIC	BLCDT -20050609AAQ
48	WPXI	PITTSBURGH PA	210.0	PLN	DTVPLN -DTVP1717
48	W48AA	KEYSER WV	80.2	LIC	BLTT -1615
49	WHSV-TV	HARRISONBURG VA	76.9	LIC	BLCDT -20060413ACO
49	WHSV-TV	HARRISONBURG VA	76.9	PLN	DTVPLN -DTVP1755
50	WDCW	WASHINGTON DC	102.8	PLN	DTVPLN -DTVP1762

Figure 3

62	WFPT	FREDERICK MD	75.0	CP	BPET	-20030609ACZ
50	WDCW	WASHINGTON DC	102.8	APP	USERRECORD-01	

Proposed station is beyond the site to nearest cell evaluation distance

#####

#### Analysis of Interference to Affected Station 3

##### Analysis of current record

Channel	Call	City/State	Application Ref. No.
49	WHSV-TV	HARRISONBURG VA	BLCDT -20060413ACO

#### Stations Potentially Affecting This Station

Chan	Call	City/State	Dist(km)	Status	Application Ref. No.
48	WRC-TV	WASHINGTON DC	139.6	LIC	BLCDT -20000216AAT
48	WRC-TV	WASHINGTON DC	139.6	PLN	DTVPLN -DTVP1701
49	WRAZ	RALEIGH NC	325.4	CP MOD	BMPCDT -20040329AKW
49	WRAZ	RALEIGH NC	325.4	PLN	DTVPLN -DTVP1745
49	WWSI	ATLANTIC CITY NJ	386.3	LIC	BLCDT -20020812ABS
49	WWSI	ATLANTIC CITY NJ	386.3	PLN	DTVPLN -DTVP1747
49	WNEP-TV	SCRANTON PA	371.3	LIC	BLCDT -20020807AAF
49	WNEP-TV	SCRANTON PA	371.3	PLN	DTVPLN -DTVP1750
49	WLFG	GRUNDY VA	361.4	CP	BPCDT -19991029AGK
49	WLFG	GRUNDY VA	361.4	PLN	DTVPLN -DTVP1754
49	WTAP-TV	PARKERSBURG WV	266.7	LIC	BLCDT -20040423ABG
49	WTAP-TV	PARKERSBURG WV	266.7	PLN	DTVPLN -DTVP1757
50	WDCW	WASHINGTON DC	144.8	PLN	DTVPLN -DTVP1762
50	WPCB-TV	GREENSBURG PA	222.2	LIC	BLCDT -20030409ABC
50	WPCB-TV	GREENSBURG PA	222.2	PLN	DTVPLN -DTVP1776
50	WDCW	WASHINGTON DC	144.8	APP	USERRECORD-01

Total scenarios = 16

Result key: 1

Scenario 1 Affected station 3  
Before Analysis

Results for: 49A VA HARRISONBURG BLCDT 20060413ACO LIC

HAAT 639.0 m, ATV ERP 65.0 kW	POPULATION	AREA (sq km)
within Noise Limited Contour	857082	28974.9
not affected by terrain losses	476292	15630.9
lost to NTSC IX	0	0.0
lost to additional IX by ATV	5297	188.9
lost to ATV IX only	5297	188.9
lost to all IX	5297	188.9

Potential Interfering Stations Included in above Scenario 1

48A DC WASHINGTON	BLCDT	20000216AAT	LIC
49A NC RALEIGH	BMPCDT	20040329AKW	CP



Figure 3

49A PA SCRANTON	BLCDDT	20020807AAF	LIC
49A VA GRUNDY	BPCDDT	19991029AGK	CP
50A DC WASHINGTON	DTVPLN	DTVP1762	PLN

After Analysis

Results for: 49A VA HARRISONBURG	BLCDDT	20060413ACO	LIC
HAAT 639.0 m, ATV ERP 65.0 kW			
	POPULATION	AREA (sq km)	
within Noise Limited Contour	857082	28974.9	
not affected by terrain losses	476292	15630.9	
lost to NTSC IX	0	0.0	
lost to additional IX by ATV	5303	196.9	
lost to ATV IX only	5303	196.9	
lost to all IX	5303	196.9	

Potential Interfering Stations Included in above Scenario 1

48A DC WASHINGTON	BLCDDT	20000216AAT	LIC
49A NC RALEIGH	BMPCDDT	20040329AKW	CP
49A PA SCRANTON	BLCDDT	20020807AAF	LIC
49A VA GRUNDY	BPCDDT	19991029AGK	CP
50A DC WASHINGTON	USERRECORD01		APP

Percent new IX = 0.0013%

Result key: 2  
 Scenario 2 Affected station 3  
 Before Analysis

Results for: 49A VA HARRISONBURG	BLCDDT	20060413ACO	LIC
HAAT 639.0 m, ATV ERP 65.0 kW			
	POPULATION	AREA (sq km)	
within Noise Limited Contour	857082	28974.9	
not affected by terrain losses	476292	15630.9	
lost to NTSC IX	0	0.0	
lost to additional IX by ATV	5297	188.9	
lost to ATV IX only	5297	188.9	
lost to all IX	5297	188.9	

Potential Interfering Stations Included in above Scenario 2

48A DC WASHINGTON	BLCDDT	20000216AAT	LIC
49A NC RALEIGH	BMPCDDT	20040329AKW	CP
49A PA SCRANTON	BLCDDT	20020807AAF	LIC
49A VA GRUNDY	DTVPLN	DTVP1754	PLN
50A DC WASHINGTON	DTVPLN	DTVP1762	PLN

After Analysis

Results for: 49A VA HARRISONBURG	BLCDDT	20060413ACO	LIC
HAAT 639.0 m, ATV ERP 65.0 kW			
	POPULATION	AREA (sq km)	
within Noise Limited Contour	857082	28974.9	
not affected by terrain losses	476292	15630.9	
lost to NTSC IX	0	0.0	
lost to additional IX by ATV	5303	196.9	

Figure 3

lost to ATV IX only	5303	196.9
lost to all IX	5303	196.9

Potential Interfering Stations Included in above Scenario 2

48A DC WASHINGTON	BLCDDT	20000216AAT	LIC
49A NC RALEIGH	BMPCDDT	20040329AKW	CP
49A PA SCRANTON	BLCDDT	20020807AAF	LIC
49A VA GRUNDY	DTVPLN	DTVP1754	PLN
50A DC WASHINGTON	USERRECORD01		APP

Percent new IX = 0.0013%

Result key: 3  
 Scenario 3 Affected station 3  
 Before Analysis

Results for: 49A VA HARRISONBURG	BLCDDT	20060413ACO	LIC
HAAT 639.0 m, ATV ERP 65.0 kW			
	POPULATION	AREA (sq km)	
within Noise Limited Contour	857082	28974.9	
not affected by terrain losses	476292	15630.9	
lost to NTSC IX	0	0.0	
lost to additional IX by ATV	5297	188.9	
lost to ATV IX only	5297	188.9	
lost to all IX	5297	188.9	

Potential Interfering Stations Included in above Scenario 3

48A DC WASHINGTON	BLCDDT	20000216AAT	LIC
49A NC RALEIGH	BMPCDDT	20040329AKW	CP
49A PA SCRANTON	DTVPLN	DTVP1750	PLN
49A VA GRUNDY	BPCDDT	19991029AGK	CP
50A DC WASHINGTON	DTVPLN	DTVP1762	PLN

After Analysis

Results for: 49A VA HARRISONBURG	BLCDDT	20060413ACO	LIC
HAAT 639.0 m, ATV ERP 65.0 kW			
	POPULATION	AREA (sq km)	
within Noise Limited Contour	857082	28974.9	
not affected by terrain losses	476292	15630.9	
lost to NTSC IX	0	0.0	
lost to additional IX by ATV	5303	196.9	
lost to ATV IX only	5303	196.9	
lost to all IX	5303	196.9	

Potential Interfering Stations Included in above Scenario 3

48A DC WASHINGTON	BLCDDT	20000216AAT	LIC
49A NC RALEIGH	BMPCDDT	20040329AKW	CP
49A PA SCRANTON	DTVPLN	DTVP1750	PLN
49A VA GRUNDY	BPCDDT	19991029AGK	CP
50A DC WASHINGTON	USERRECORD01		APP

Percent new IX = 0.0013%

Figure 3

Result key: 4  
Scenario 4 Affected station 3  
Before Analysis

Results for: 49A VA HARRISONBURG BLCDDT 20060413ACO LIC  
HAAT 639.0 m, ATV ERP 65.0 kW

	POPULATION	AREA (sq km)
within Noise Limited Contour	857082	28974.9
not affected by terrain losses	476292	15630.9
lost to NTSC IX	0	0.0
lost to additional IX by ATV	5297	188.9
lost to ATV IX only	5297	188.9
lost to all IX	5297	188.9

Potential Interfering Stations Included in above Scenario 4

48A DC WASHINGTON	BLCDDT	20000216AAT	LIC
49A NC RALEIGH	BMPCDDT	20040329AKW	CP
49A PA SCRANTON	DTVPLN	DTVP1750	PLN
49A VA GRUNDY	DTVPLN	DTVP1754	PLN
50A DC WASHINGTON	DTVPLN	DTVP1762	PLN

After Analysis

Results for: 49A VA HARRISONBURG BLCDDT 20060413ACO LIC  
HAAT 639.0 m, ATV ERP 65.0 kW

	POPULATION	AREA (sq km)
within Noise Limited Contour	857082	28974.9
not affected by terrain losses	476292	15630.9
lost to NTSC IX	0	0.0
lost to additional IX by ATV	5303	196.9
lost to ATV IX only	5303	196.9
lost to all IX	5303	196.9

Potential Interfering Stations Included in above Scenario 4

48A DC WASHINGTON	BLCDDT	20000216AAT	LIC
49A NC RALEIGH	BMPCDDT	20040329AKW	CP
49A PA SCRANTON	DTVPLN	DTVP1750	PLN
49A VA GRUNDY	DTVPLN	DTVP1754	PLN
50A DC WASHINGTON	USERRECORD01		APP

Percent new IX = 0.0013%

Result key: 5  
Scenario 5 Affected station 3  
Before Analysis

Results for: 49A VA HARRISONBURG BLCDDT 20060413ACO LIC  
HAAT 639.0 m, ATV ERP 65.0 kW

	POPULATION	AREA (sq km)
within Noise Limited Contour	857082	28974.9
not affected by terrain losses	476292	15630.9
lost to NTSC IX	0	0.0
lost to additional IX by ATV	5297	188.9
lost to ATV IX only	5297	188.9
lost to all IX	5297	188.9

Figure 3

Potential Interfering Stations Included in above Scenario 5

48A DC WASHINGTON	BLCDDT	20000216AAT	LIC
49A NC RALEIGH	DTVPLN	DTVP1745	PLN
49A PA SCRANTON	BLCDDT	20020807AAF	LIC
49A VA GRUNDY	BPCDDT	19991029AGK	CP
50A DC WASHINGTON	DTVPLN	DTVP1762	PLN

After Analysis

Results for: 49A VA HARRISONBURG BLCDDT 20060413ACO LIC  
HAAT 639.0 m, ATV ERP 65.0 kW

	POPULATION	AREA (sq km)
within Noise Limited Contour	857082	28974.9
not affected by terrain losses	476292	15630.9
lost to NTSC IX	0	0.0
lost to additional IX by ATV	5303	196.9
lost to ATV IX only	5303	196.9
lost to all IX	5303	196.9

Potential Interfering Stations Included in above Scenario 5

48A DC WASHINGTON	BLCDDT	20000216AAT	LIC
49A NC RALEIGH	DTVPLN	DTVP1745	PLN
49A PA SCRANTON	BLCDDT	20020807AAF	LIC
49A VA GRUNDY	BPCDDT	19991029AGK	CP
50A DC WASHINGTON	USERRECORD01		APP

Percent new IX = 0.0013%

Result key: 6  
Scenario 6 Affected station 3  
Before Analysis

Results for: 49A VA HARRISONBURG BLCDDT 20060413ACO LIC  
HAAT 639.0 m, ATV ERP 65.0 kW

	POPULATION	AREA (sq km)
within Noise Limited Contour	857082	28974.9
not affected by terrain losses	476292	15630.9
lost to NTSC IX	0	0.0
lost to additional IX by ATV	5297	188.9
lost to ATV IX only	5297	188.9
lost to all IX	5297	188.9

Potential Interfering Stations Included in above Scenario 6

48A DC WASHINGTON	BLCDDT	20000216AAT	LIC
49A NC RALEIGH	DTVPLN	DTVP1745	PLN
49A PA SCRANTON	BLCDDT	20020807AAF	LIC
49A VA GRUNDY	DTVPLN	DTVP1754	PLN
50A DC WASHINGTON	DTVPLN	DTVP1762	PLN

After Analysis

Results for: 49A VA HARRISONBURG BLCDDT 20060413ACO LIC  
HAAT 639.0 m, ATV ERP 65.0 kW

Figure 3

	POPULATION	AREA (sq km)
within Noise Limited Contour	857082	28974.9
not affected by terrain losses	476292	15630.9
lost to NTSC IX	0	0.0
lost to additional IX by ATV	5303	196.9
lost to ATV IX only	5303	196.9
lost to all IX	5303	196.9
Potential Interfering Stations Included in above Scenario	6	
48A DC WASHINGTON	BLCDDT 20000216AAT	LIC
49A NC RALEIGH	DTVPLN DTVP1745	PLN
49A PA SCRANTON	BLCDDT 20020807AAF	LIC
49A VA GRUNDY	DTVPLN DTVP1754	PLN
50A DC WASHINGTON	USERRECORD01	APP
Percent new IX =	0.0013%	
Result key:	7	
Scenario	7 Affected station	3
Before Analysis		
Results for: 49A VA HARRISONBURG	BLCDDT 20060413ACO	LIC
HAAT 639.0 m, ATV ERP 65.0 kW		
	POPULATION	AREA (sq km)
within Noise Limited Contour	857082	28974.9
not affected by terrain losses	476292	15630.9
lost to NTSC IX	0	0.0
lost to additional IX by ATV	5297	188.9
lost to ATV IX only	5297	188.9
lost to all IX	5297	188.9
Potential Interfering Stations Included in above Scenario	7	
48A DC WASHINGTON	BLCDDT 20000216AAT	LIC
49A NC RALEIGH	DTVPLN DTVP1745	PLN
49A PA SCRANTON	DTVPLN DTVP1750	PLN
49A VA GRUNDY	BPCDDT 19991029AGK	CP
50A DC WASHINGTON	DTVPLN DTVP1762	PLN
After Analysis		
Results for: 49A VA HARRISONBURG	BLCDDT 20060413ACO	LIC
HAAT 639.0 m, ATV ERP 65.0 kW		
	POPULATION	AREA (sq km)
within Noise Limited Contour	857082	28974.9
not affected by terrain losses	476292	15630.9
lost to NTSC IX	0	0.0
lost to additional IX by ATV	5303	196.9
lost to ATV IX only	5303	196.9
lost to all IX	5303	196.9
Potential Interfering Stations Included in above Scenario	7	
48A DC WASHINGTON	BLCDDT 20000216AAT	LIC
49A NC RALEIGH	DTVPLN DTVP1745	PLN
49A PA SCRANTON	DTVPLN DTVP1750	PLN

Figure 3

49A VA GRUNDY	BPCDDT 19991029AGK	CP
50A DC WASHINGTON	USERRECORD01	APP
Percent new IX =	0.0013%	
Result key:	8	
Scenario	8 Affected station	3
Before Analysis		
Results for: 49A VA HARRISONBURG	BLCDDT 20060413ACO	LIC
HAAT 639.0 m, ATV ERP 65.0 kW		
	POPULATION	AREA (sq km)
within Noise Limited Contour	857082	28974.9
not affected by terrain losses	476292	15630.9
lost to NTSC IX	0	0.0
lost to additional IX by ATV	5297	188.9
lost to ATV IX only	5297	188.9
lost to all IX	5297	188.9
Potential Interfering Stations Included in above Scenario	8	
48A DC WASHINGTON	BLCDDT 20000216AAT	LIC
49A NC RALEIGH	DTVPLN DTVP1745	PLN
49A PA SCRANTON	DTVPLN DTVP1750	PLN
49A VA GRUNDY	DTVPLN DTVP1754	PLN
50A DC WASHINGTON	DTVPLN DTVP1762	PLN
After Analysis		
Results for: 49A VA HARRISONBURG	BLCDDT 20060413ACO	LIC
HAAT 639.0 m, ATV ERP 65.0 kW		
	POPULATION	AREA (sq km)
within Noise Limited Contour	857082	28974.9
not affected by terrain losses	476292	15630.9
lost to NTSC IX	0	0.0
lost to additional IX by ATV	5303	196.9
lost to ATV IX only	5303	196.9
lost to all IX	5303	196.9
Potential Interfering Stations Included in above Scenario	8	
48A DC WASHINGTON	BLCDDT 20000216AAT	LIC
49A NC RALEIGH	DTVPLN DTVP1745	PLN
49A PA SCRANTON	DTVPLN DTVP1750	PLN
49A VA GRUNDY	DTVPLN DTVP1754	PLN
50A DC WASHINGTON	USERRECORD01	APP
Percent new IX =	0.0013%	
Result key:	9	
Scenario	9 Affected station	3
Before Analysis		
Results for: 49A VA HARRISONBURG	BLCDDT 20060413ACO	LIC
HAAT 639.0 m, ATV ERP 65.0 kW		
	POPULATION	AREA (sq km)
within Noise Limited Contour	857082	28974.9

Figure 3

not affected by terrain losses	476292	15630.9	
lost to NTSC IX	0	0.0	
lost to additional IX by ATV	5297	188.9	
lost to ATV IX only	5297	188.9	
lost to all IX	5297	188.9	
Potential Interfering Stations Included in above Scenario	9		
48A DC WASHINGTON	DTVPLN	DTVP1701	PLN
49A NC RALEIGH	BMPCDT	20040329AKW	CP
49A PA SCRANTON	BLCDT	20020807AAF	LIC
49A VA GRUNDY	BPCDT	19991029AGK	CP
50A DC WASHINGTON	DTVPLN	DTVP1762	PLN
After Analysis			
Results for: 49A VA HARRISONBURG	BLCDT	20060413ACO	LIC
HAAT 639.0 m, ATV ERP 65.0 kW			
	POPULATION	AREA (sq km)	
within Noise Limited Contour	857082	28974.9	
not affected by terrain losses	476292	15630.9	
lost to NTSC IX	0	0.0	
lost to additional IX by ATV	5303	196.9	
lost to ATV IX only	5303	196.9	
lost to all IX	5303	196.9	
Potential Interfering Stations Included in above Scenario	9		
48A DC WASHINGTON	DTVPLN	DTVP1701	PLN
49A NC RALEIGH	BMPCDT	20040329AKW	CP
49A PA SCRANTON	BLCDT	20020807AAF	LIC
49A VA GRUNDY	BPCDT	19991029AGK	CP
50A DC WASHINGTON	USERRECORD01	APP	
Percent new IX =	0.0013%		
Result key:	10		
Scenario	10 Affected station	3	
Before Analysis			
Results for: 49A VA HARRISONBURG	BLCDT	20060413ACO	LIC
HAAT 639.0 m, ATV ERP 65.0 kW			
	POPULATION	AREA (sq km)	
within Noise Limited Contour	857082	28974.9	
not affected by terrain losses	476292	15630.9	
lost to NTSC IX	0	0.0	
lost to additional IX by ATV	5297	188.9	
lost to ATV IX only	5297	188.9	
lost to all IX	5297	188.9	
Potential Interfering Stations Included in above Scenario	10		
48A DC WASHINGTON	DTVPLN	DTVP1701	PLN
49A NC RALEIGH	BMPCDT	20040329AKW	CP
49A PA SCRANTON	BLCDT	20020807AAF	LIC
49A VA GRUNDY	DTVPLN	DTVP1754	PLN
50A DC WASHINGTON	DTVPLN	DTVP1762	PLN

Figure 3

After Analysis			
Results for: 49A VA HARRISONBURG	BLCDT	20060413ACO	LIC
HAAT 639.0 m, ATV ERP 65.0 kW			
	POPULATION	AREA (sq km)	
within Noise Limited Contour	857082	28974.9	
not affected by terrain losses	476292	15630.9	
lost to NTSC IX	0	0.0	
lost to additional IX by ATV	5303	196.9	
lost to ATV IX only	5303	196.9	
lost to all IX	5303	196.9	
Potential Interfering Stations Included in above Scenario	10		
48A DC WASHINGTON	DTVPLN	DTVP1701	PLN
49A NC RALEIGH	BMPCDT	20040329AKW	CP
49A PA SCRANTON	BLCDT	20020807AAF	LIC
49A VA GRUNDY	DTVPLN	DTVP1754	PLN
50A DC WASHINGTON	USERRECORD01	APP	
Percent new IX =	0.0013%		
Result key:	11		
Scenario	11 Affected station	3	
Before Analysis			
Results for: 49A VA HARRISONBURG	BLCDT	20060413ACO	LIC
HAAT 639.0 m, ATV ERP 65.0 kW			
	POPULATION	AREA (sq km)	
within Noise Limited Contour	857082	28974.9	
not affected by terrain losses	476292	15630.9	
lost to NTSC IX	0	0.0	
lost to additional IX by ATV	5297	188.9	
lost to ATV IX only	5297	188.9	
lost to all IX	5297	188.9	
Potential Interfering Stations Included in above Scenario	11		
48A DC WASHINGTON	DTVPLN	DTVP1701	PLN
49A NC RALEIGH	BMPCDT	20040329AKW	CP
49A PA SCRANTON	DTVPLN	DTVP1750	PLN
49A VA GRUNDY	BPCDT	19991029AGK	CP
50A DC WASHINGTON	DTVPLN	DTVP1762	PLN
After Analysis			
Results for: 49A VA HARRISONBURG	BLCDT	20060413ACO	LIC
HAAT 639.0 m, ATV ERP 65.0 kW			
	POPULATION	AREA (sq km)	
within Noise Limited Contour	857082	28974.9	
not affected by terrain losses	476292	15630.9	
lost to NTSC IX	0	0.0	
lost to additional IX by ATV	5303	196.9	
lost to ATV IX only	5303	196.9	
lost to all IX	5303	196.9	

Figure 3

Potential Interfering Stations Included in above Scenario 11

48A DC WASHINGTON	DTVPLN	DTVP1701	PLN
49A NC RALEIGH	BMPCDT	20040329AKW	CP
49A PA SCRANTON	DTVPLN	DTVP1750	PLN
49A VA GRUNDY	BPCDT	19991029AGK	CP
50A DC WASHINGTON	USERRECORD01		APP

Percent new IX = 0.0013%

Result key: 12  
Scenario 12 Affected station 3  
Before Analysis

Results for: 49A VA HARRISONBURG BLC DT 20060413ACO LIC

	POPULATION	AREA (sq km)
HAAT 639.0 m, ATV ERP 65.0 kW		
within Noise Limited Contour	857082	28974.9
not affected by terrain losses	476292	15630.9
lost to NTSC IX	0	0.0
lost to additional IX by ATV	5297	188.9
lost to ATV IX only	5297	188.9
lost to all IX	5297	188.9

Potential Interfering Stations Included in above Scenario 12

48A DC WASHINGTON	DTVPLN	DTVP1701	PLN
49A NC RALEIGH	BMPCDT	20040329AKW	CP
49A PA SCRANTON	DTVPLN	DTVP1750	PLN
49A VA GRUNDY	DTVPLN	DTVP1754	PLN
50A DC WASHINGTON	DTVPLN	DTVP1762	PLN

After Analysis

Results for: 49A VA HARRISONBURG BLC DT 20060413ACO LIC

	POPULATION	AREA (sq km)
HAAT 639.0 m, ATV ERP 65.0 kW		
within Noise Limited Contour	857082	28974.9
not affected by terrain losses	476292	15630.9
lost to NTSC IX	0	0.0
lost to additional IX by ATV	5303	196.9
lost to ATV IX only	5303	196.9
lost to all IX	5303	196.9

Potential Interfering Stations Included in above Scenario 12

48A DC WASHINGTON	DTVPLN	DTVP1701	PLN
49A NC RALEIGH	BMPCDT	20040329AKW	CP
49A PA SCRANTON	DTVPLN	DTVP1750	PLN
49A VA GRUNDY	DTVPLN	DTVP1754	PLN
50A DC WASHINGTON	USERRECORD01		APP

Percent new IX = 0.0013%

Result key: 13  
Scenario 13 Affected station 3  
Before Analysis

Figure 3

Results for: 49A VA HARRISONBURG BLC DT 20060413ACO LIC

	POPULATION	AREA (sq km)
HAAT 639.0 m, ATV ERP 65.0 kW		
within Noise Limited Contour	857082	28974.9
not affected by terrain losses	476292	15630.9
lost to NTSC IX	0	0.0
lost to additional IX by ATV	5297	188.9
lost to ATV IX only	5297	188.9
lost to all IX	5297	188.9

Potential Interfering Stations Included in above Scenario 13

48A DC WASHINGTON	DTVPLN	DTVP1701	PLN
49A NC RALEIGH	DTVPLN	DTVP1745	PLN
49A PA SCRANTON	BLC DT	20020807AAF	LIC
49A VA GRUNDY	BPCDT	19991029AGK	CP
50A DC WASHINGTON	DTVPLN	DTVP1762	PLN

After Analysis

Results for: 49A VA HARRISONBURG BLC DT 20060413ACO LIC

	POPULATION	AREA (sq km)
HAAT 639.0 m, ATV ERP 65.0 kW		
within Noise Limited Contour	857082	28974.9
not affected by terrain losses	476292	15630.9
lost to NTSC IX	0	0.0
lost to additional IX by ATV	5303	196.9
lost to ATV IX only	5303	196.9
lost to all IX	5303	196.9

Potential Interfering Stations Included in above Scenario 13

48A DC WASHINGTON	DTVPLN	DTVP1701	PLN
49A NC RALEIGH	DTVPLN	DTVP1745	PLN
49A PA SCRANTON	BLC DT	20020807AAF	LIC
49A VA GRUNDY	BPCDT	19991029AGK	CP
50A DC WASHINGTON	USERRECORD01		APP

Percent new IX = 0.0013%

Result key: 14  
Scenario 14 Affected station 3  
Before Analysis

Results for: 49A VA HARRISONBURG BLC DT 20060413ACO LIC

	POPULATION	AREA (sq km)
HAAT 639.0 m, ATV ERP 65.0 kW		
within Noise Limited Contour	857082	28974.9
not affected by terrain losses	476292	15630.9
lost to NTSC IX	0	0.0
lost to additional IX by ATV	5297	188.9
lost to ATV IX only	5297	188.9
lost to all IX	5297	188.9

Potential Interfering Stations Included in above Scenario 14

Figure 3

48A DC WASHINGTON	DTVPLN	DTVP1701	PLN
49A NC RALEIGH	DTVPLN	DTVP1745	PLN
49A PA SCRANTON	BLCDDT	20020807AAF	LIC
49A VA GRUNDY	DTVPLN	DTVP1754	PLN
50A DC WASHINGTON	DTVPLN	DTVP1762	PLN

After Analysis

Results for: 49A VA HARRISONBURG	BLCDDT	20060413ACO	LIC
HAAT 639.0 m, ATV ERP 65.0 kW			
	POPULATION	AREA (sq km)	
within Noise Limited Contour	857082	28974.9	
not affected by terrain losses	476292	15630.9	
lost to NTSC IX	0	0.0	
lost to additional IX by ATV	5303	196.9	
lost to ATV IX only	5303	196.9	
lost to all IX	5303	196.9	

Potential Interfering Stations Included in above Scenario 14

48A DC WASHINGTON	DTVPLN	DTVP1701	PLN
49A NC RALEIGH	DTVPLN	DTVP1745	PLN
49A PA SCRANTON	BLCDDT	20020807AAF	LIC
49A VA GRUNDY	DTVPLN	DTVP1754	PLN
50A DC WASHINGTON	USERRECORD01		APP

Percent new IX = 0.0013%

Result key: 15  
Scenario 15 Affected station 3  
Before Analysis

Results for: 49A VA HARRISONBURG	BLCDDT	20060413ACO	LIC
HAAT 639.0 m, ATV ERP 65.0 kW			
	POPULATION	AREA (sq km)	
within Noise Limited Contour	857082	28974.9	
not affected by terrain losses	476292	15630.9	
lost to NTSC IX	0	0.0	
lost to additional IX by ATV	5297	188.9	
lost to ATV IX only	5297	188.9	
lost to all IX	5297	188.9	

Potential Interfering Stations Included in above Scenario 15

48A DC WASHINGTON	DTVPLN	DTVP1701	PLN
49A NC RALEIGH	DTVPLN	DTVP1745	PLN
49A PA SCRANTON	DTVPLN	DTVP1750	PLN
49A VA GRUNDY	BPCDDT	19991029AGK	CP
50A DC WASHINGTON	DTVPLN	DTVP1762	PLN

After Analysis

Results for: 49A VA HARRISONBURG	BLCDDT	20060413ACO	LIC
HAAT 639.0 m, ATV ERP 65.0 kW			
	POPULATION	AREA (sq km)	
within Noise Limited Contour	857082	28974.9	
not affected by terrain losses	476292	15630.9	

Figure 3

lost to NTSC IX	0	0.0
lost to additional IX by ATV	5303	196.9
lost to ATV IX only	5303	196.9
lost to all IX	5303	196.9

Potential Interfering Stations Included in above Scenario 15

48A DC WASHINGTON	DTVPLN	DTVP1701	PLN
49A NC RALEIGH	DTVPLN	DTVP1745	PLN
49A PA SCRANTON	DTVPLN	DTVP1750	PLN
49A VA GRUNDY	BPCDDT	19991029AGK	CP
50A DC WASHINGTON	USERRECORD01		APP

Percent new IX = 0.0013%

Result key: 16  
Scenario 16 Affected station 3  
Before Analysis

Results for: 49A VA HARRISONBURG	BLCDDT	20060413ACO	LIC
HAAT 639.0 m, ATV ERP 65.0 kW			
	POPULATION	AREA (sq km)	
within Noise Limited Contour	857082	28974.9	
not affected by terrain losses	476292	15630.9	
lost to NTSC IX	0	0.0	
lost to additional IX by ATV	5297	188.9	
lost to ATV IX only	5297	188.9	
lost to all IX	5297	188.9	

Potential Interfering Stations Included in above Scenario 16

48A DC WASHINGTON	DTVPLN	DTVP1701	PLN
49A NC RALEIGH	DTVPLN	DTVP1745	PLN
49A PA SCRANTON	DTVPLN	DTVP1750	PLN
49A VA GRUNDY	DTVPLN	DTVP1754	PLN
50A DC WASHINGTON	DTVPLN	DTVP1762	PLN

After Analysis

Results for: 49A VA HARRISONBURG	BLCDDT	20060413ACO	LIC
HAAT 639.0 m, ATV ERP 65.0 kW			
	POPULATION	AREA (sq km)	
within Noise Limited Contour	857082	28974.9	
not affected by terrain losses	476292	15630.9	
lost to NTSC IX	0	0.0	
lost to additional IX by ATV	5303	196.9	
lost to ATV IX only	5303	196.9	
lost to all IX	5303	196.9	

Potential Interfering Stations Included in above Scenario 16

48A DC WASHINGTON	DTVPLN	DTVP1701	PLN
49A NC RALEIGH	DTVPLN	DTVP1745	PLN
49A PA SCRANTON	DTVPLN	DTVP1750	PLN
49A VA GRUNDY	DTVPLN	DTVP1754	PLN
50A DC WASHINGTON	USERRECORD01		APP

Figure 3

Percent new IX = 0.0013%

Worst case new IX 0.0013% Scenario 1

#####

Analysis of Interference to Affected Station 4

Analysis of current record

Channel	Call	City/State	Application Ref. No.
49	WHSV-TV	HARRISONBURG VA	DTVPLN -DTVPl755

Stations Potentially Affecting This Station

Chan	Call	City/State	Dist(km)	Status	Application Ref. No.
48	WRC-TV	WASHINGTON DC	139.6	LIC	BLCDDT -20000216AAT
48	WRC-TV	WASHINGTON DC	139.6	PLN	DTVPLN -DTVPl701
49	WRAZ	RALEIGH NC	325.4	CP MOD	BMPDDT -20040329AKW
49	WRAZ	RALEIGH NC	325.4	PLN	DTVPLN -DTVPl745
49	WWSI	ATLANTIC CITY NJ	386.3	LIC	BLCDDT -20020812ABS
49	WWSI	ATLANTIC CITY NJ	386.3	PLN	DTVPLN -DTVPl747
49	WNEP-TV	SCRANTON PA	371.3	LIC	BLCDDT -20020807AAF
49	WNEP-TV	SCRANTON PA	371.3	PLN	DTVPLN -DTVPl750
49	WLFG	GRUNDY VA	361.4	CP	BPCDDT -19991029AGK
49	WLFG	GRUNDY VA	361.4	PLN	DTVPLN -DTVPl754
49	WTAP-TV	PARKERSBURG WV	266.7	LIC	BLCDDT -20040423ABG
49	WTAP-TV	PARKERSBURG WV	266.7	PLN	DTVPLN -DTVPl757
50	WDCW	WASHINGTON DC	144.8	PLN	DTVPLN -DTVPl762
50	WPCB-TV	GREENSBURG PA	222.2	LIC	BLCDDT -20030409ABC
50	WPCB-TV	GREENSBURG PA	222.2	PLN	DTVPLN -DTVPl776
50	WDCW	WASHINGTON DC	144.8	APP	USERRECORD-01

Total scenarios = 16

Result key: 17

Scenario 1 Affected station 4

Before Analysis

Results for: 49A VA HARRISONBURG DTVPLN DTVPl755 PLN

HAAT	638.0 m, ATV ERP	65.0 kW	POPULATION	AREA (sq km)
within Noise Limited Contour	857082	28974.9		
not affected by terrain losses	476292	15630.9		
lost to NTSC IX	0	0.0		
lost to additional IX by ATV	5297	188.9		
lost to ATV IX only	5297	188.9		
lost to all IX	5297	188.9		

Potential Interfering Stations Included in above Scenario 1

48A DC WASHINGTON	BLCDDT	20000216AAT	LIC
49A NC RALEIGH	BMPDDT	20040329AKW	CP
49A PA SCRANTON	BLCDDT	20020807AAF	LIC
49A VA GRUNDY	BPCDDT	19991029AGK	CP
50A DC WASHINGTON	USERRECORD01		APP

Figure 3

50A DC WASHINGTON DTVPLN DTVPl762 PLN

After Analysis

Results for: 49A VA HARRISONBURG DTVPLN DTVPl755 PLN

HAAT	638.0 m, ATV ERP	65.0 kW	POPULATION	AREA (sq km)
within Noise Limited Contour	857082	28974.9		
not affected by terrain losses	476292	15630.9		
lost to NTSC IX	0	0.0		
lost to additional IX by ATV	5303	196.9		
lost to ATV IX only	5303	196.9		
lost to all IX	5303	196.9		

Potential Interfering Stations Included in above Scenario 1

Percent new IX = 0.0013%

Result key: 18

Scenario 2 Affected station 4

Before Analysis

Results for: 49A VA HARRISONBURG DTVPLN DTVPl755 PLN

HAAT	638.0 m, ATV ERP	65.0 kW	POPULATION	AREA (sq km)
within Noise Limited Contour	857082	28974.9		
not affected by terrain losses	476292	15630.9		
lost to NTSC IX	0	0.0		
lost to additional IX by ATV	5297	188.9		
lost to ATV IX only	5297	188.9		
lost to all IX	5297	188.9		

Potential Interfering Stations Included in above Scenario 2

48A DC WASHINGTON	BLCDDT	20000216AAT	LIC
49A NC RALEIGH	BMPDDT	20040329AKW	CP
49A PA SCRANTON	BLCDDT	20020807AAF	LIC
49A VA GRUNDY	DTVPLN	DTVPl754	PLN
50A DC WASHINGTON	DTVPLN	DTVPl762	PLN

After Analysis

Results for: 49A VA HARRISONBURG DTVPLN DTVPl755 PLN

HAAT	638.0 m, ATV ERP	65.0 kW	POPULATION	AREA (sq km)
within Noise Limited Contour	857082	28974.9		
not affected by terrain losses	476292	15630.9		
lost to NTSC IX	0	0.0		
lost to additional IX by ATV	5303	196.9		
lost to ATV IX only	5303	196.9		
lost to all IX	5303	196.9		

Figure 3

Potential Interfering Stations Included in above Scenario 2

48A DC WASHINGTON	BLCDT	20000216AAT	LIC
49A NC RALEIGH	BMPCDT	20040329AKW	CP
49A PA SCRANTON	BLCDT	20020807AAF	LIC
49A VA GRUNDY	DTVPLN	DTVP1754	PLN
50A DC WASHINGTON	USERRECORD01		APP

Percent new IX = 0.0013%

Result key: 19

Scenario 3 Affected station 4

Before Analysis

Results for: 49A VA HARRISONBURG DTVPLN DTVP1755 PLN

HAAT 638.0 m, ATV ERP 65.0 kW	POPULATION	AREA (sq km)
within Noise Limited Contour	857082	28974.9
not affected by terrain losses	476292	15630.9
lost to NTSC IX	0	0.0
lost to additional IX by ATV	5297	188.9
lost to ATV IX only	5297	188.9
lost to all IX	5297	188.9

Potential Interfering Stations Included in above Scenario 3

48A DC WASHINGTON	BLCDT	20000216AAT	LIC
49A NC RALEIGH	BMPCDT	20040329AKW	CP
49A PA SCRANTON	DTVPLN	DTVP1750	PLN
49A VA GRUNDY	BPCDT	19991029AGK	CP
50A DC WASHINGTON	DTVPLN	DTVP1762	PLN

After Analysis

Results for: 49A VA HARRISONBURG DTVPLN DTVP1755 PLN

HAAT 638.0 m, ATV ERP 65.0 kW	POPULATION	AREA (sq km)
within Noise Limited Contour	857082	28974.9
not affected by terrain losses	476292	15630.9
lost to NTSC IX	0	0.0
lost to additional IX by ATV	5303	196.9
lost to ATV IX only	5303	196.9
lost to all IX	5303	196.9

Potential Interfering Stations Included in above Scenario 3

48A DC WASHINGTON	BLCDT	20000216AAT	LIC
49A NC RALEIGH	BMPCDT	20040329AKW	CP
49A PA SCRANTON	DTVPLN	DTVP1750	PLN
49A VA GRUNDY	BPCDT	19991029AGK	CP
50A DC WASHINGTON	USERRECORD01		APP

Percent new IX = 0.0013%

Result key: 20

Scenario 4 Affected station 4

Figure 3

Before Analysis

Results for: 49A VA HARRISONBURG DTVPLN DTVP1755 PLN

HAAT 638.0 m, ATV ERP 65.0 kW	POPULATION	AREA (sq km)
within Noise Limited Contour	857082	28974.9
not affected by terrain losses	476292	15630.9
lost to NTSC IX	0	0.0
lost to additional IX by ATV	5297	188.9
lost to ATV IX only	5297	188.9
lost to all IX	5297	188.9

Potential Interfering Stations Included in above Scenario 4

48A DC WASHINGTON	BLCDT	20000216AAT	LIC
49A NC RALEIGH	BMPCDT	20040329AKW	CP
49A PA SCRANTON	DTVPLN	DTVP1750	PLN
49A VA GRUNDY	DTVPLN	DTVP1754	PLN
50A DC WASHINGTON	DTVPLN	DTVP1762	PLN

After Analysis

Results for: 49A VA HARRISONBURG DTVPLN DTVP1755 PLN

HAAT 638.0 m, ATV ERP 65.0 kW	POPULATION	AREA (sq km)
within Noise Limited Contour	857082	28974.9
not affected by terrain losses	476292	15630.9
lost to NTSC IX	0	0.0
lost to additional IX by ATV	5303	196.9
lost to ATV IX only	5303	196.9
lost to all IX	5303	196.9

Potential Interfering Stations Included in above Scenario 4

48A DC WASHINGTON	BLCDT	20000216AAT	LIC
49A NC RALEIGH	BMPCDT	20040329AKW	CP
49A PA SCRANTON	DTVPLN	DTVP1750	PLN
49A VA GRUNDY	DTVPLN	DTVP1754	PLN
50A DC WASHINGTON	USERRECORD01		APP

Percent new IX = 0.0013%

Result key: 21

Scenario 5 Affected station 4

Before Analysis

Results for: 49A VA HARRISONBURG DTVPLN DTVP1755 PLN

HAAT 638.0 m, ATV ERP 65.0 kW	POPULATION	AREA (sq km)
within Noise Limited Contour	857082	28974.9
not affected by terrain losses	476292	15630.9
lost to NTSC IX	0	0.0
lost to additional IX by ATV	5297	188.9
lost to ATV IX only	5297	188.9
lost to all IX	5297	188.9

Potential Interfering Stations Included in above Scenario 5



Figure 3

48A DC WASHINGTON	BLCDDT	20000216AAT	LIC
49A NC RALEIGH	DTVPLN	DTVP1745	PLN
49A PA SCRANTON	BLCDDT	20020807AAF	LIC
49A VA GRUNDY	BPCDDT	19991029AGK	CP
50A DC WASHINGTON	DTVPLN	DTVP1762	PLN

## After Analysis

Results for: 49A VA HARRISONBURG	DTVPLN	DTVP1755	PLN
HAAT 638.0 m, ATV ERP 65.0 kW			
	POPULATION	AREA (sq km)	
within Noise Limited Contour	857082	28974.9	
not affected by terrain losses	476292	15630.9	
lost to NTSC IX	0	0.0	
lost to additional IX by ATV	5303	196.9	
lost to ATV IX only	5303	196.9	
lost to all IX	5303	196.9	

Potential Interfering Stations Included in above Scenario 5

48A DC WASHINGTON	BLCDDT	20000216AAT	LIC
49A NC RALEIGH	DTVPLN	DTVP1745	PLN
49A PA SCRANTON	BLCDDT	20020807AAF	LIC
49A VA GRUNDY	BPCDDT	19991029AGK	CP
50A DC WASHINGTON	USERRECORD01		APP

Percent new IX = 0.0013%

Result key: 22  
Scenario 6 Affected station 4  
Before Analysis

Results for: 49A VA HARRISONBURG	DTVPLN	DTVP1755	PLN
HAAT 638.0 m, ATV ERP 65.0 kW			
	POPULATION	AREA (sq km)	
within Noise Limited Contour	857082	28974.9	
not affected by terrain losses	476292	15630.9	
lost to NTSC IX	0	0.0	
lost to additional IX by ATV	5297	188.9	
lost to ATV IX only	5297	188.9	
lost to all IX	5297	188.9	

Potential Interfering Stations Included in above Scenario 6

48A DC WASHINGTON	BLCDDT	20000216AAT	LIC
49A NC RALEIGH	DTVPLN	DTVP1745	PLN
49A PA SCRANTON	BLCDDT	20020807AAF	LIC
49A VA GRUNDY	DTVPLN	DTVP1754	PLN
50A DC WASHINGTON	DTVPLN	DTVP1762	PLN

## After Analysis

Results for: 49A VA HARRISONBURG	DTVPLN	DTVP1755	PLN
HAAT 638.0 m, ATV ERP 65.0 kW			
	POPULATION	AREA (sq km)	
within Noise Limited Contour	857082	28974.9	

Figure 3

not affected by terrain losses	476292	15630.9
lost to NTSC IX	0	0.0
lost to additional IX by ATV	5303	196.9
lost to ATV IX only	5303	196.9
lost to all IX	5303	196.9

Potential Interfering Stations Included in above Scenario 6

48A DC WASHINGTON	BLCDDT	20000216AAT	LIC
49A NC RALEIGH	DTVPLN	DTVP1745	PLN
49A PA SCRANTON	BLCDDT	20020807AAF	LIC
49A VA GRUNDY	DTVPLN	DTVP1754	PLN
50A DC WASHINGTON	USERRECORD01		APP

Percent new IX = 0.0013%

Result key: 23  
Scenario 7 Affected station 4  
Before Analysis

Results for: 49A VA HARRISONBURG	DTVPLN	DTVP1755	PLN
HAAT 638.0 m, ATV ERP 65.0 kW			
	POPULATION	AREA (sq km)	
within Noise Limited Contour	857082	28974.9	
not affected by terrain losses	476292	15630.9	
lost to NTSC IX	0	0.0	
lost to additional IX by ATV	5297	188.9	
lost to ATV IX only	5297	188.9	
lost to all IX	5297	188.9	

Potential Interfering Stations Included in above Scenario 7

48A DC WASHINGTON	BLCDDT	20000216AAT	LIC
49A NC RALEIGH	DTVPLN	DTVP1745	PLN
49A PA SCRANTON	DTVPLN	DTVP1750	PLN
49A VA GRUNDY	BPCDDT	19991029AGK	CP
50A DC WASHINGTON	DTVPLN	DTVP1762	PLN

## After Analysis

Results for: 49A VA HARRISONBURG	DTVPLN	DTVP1755	PLN
HAAT 638.0 m, ATV ERP 65.0 kW			
	POPULATION	AREA (sq km)	
within Noise Limited Contour	857082	28974.9	
not affected by terrain losses	476292	15630.9	
lost to NTSC IX	0	0.0	
lost to additional IX by ATV	5303	196.9	
lost to ATV IX only	5303	196.9	
lost to all IX	5303	196.9	

Potential Interfering Stations Included in above Scenario 7

48A DC WASHINGTON	BLCDDT	20000216AAT	LIC
49A NC RALEIGH	DTVPLN	DTVP1745	PLN
49A PA SCRANTON	DTVPLN	DTVP1750	PLN
49A VA GRUNDY	BPCDDT	19991029AGK	CP
50A DC WASHINGTON	USERRECORD01		APP

Figure 3

Percent new IX = 0.0013%

Result key: 24

Scenario 8 Affected station 4  
Before Analysis

Results for: 49A VA HARRISONBURG	DTVPLN	DTVP1755	PLN
HAAT 638.0 m, ATV ERP 65.0 kW			
	POPULATION	AREA (sq km)	
within Noise Limited Contour	857082	28974.9	
not affected by terrain losses	476292	15630.9	
lost to NTSC IX	0	0.0	
lost to additional IX by ATV	5297	188.9	
lost to ATV IX only	5297	188.9	
lost to all IX	5297	188.9	

Potential Interfering Stations Included in above Scenario 8

48A DC WASHINGTON	BLCDDT	20000216AAT	LIC
49A NC RALEIGH	DTVPLN	DTVP1745	PLN
49A PA SCRANTON	DTVPLN	DTVP1750	PLN
49A VA GRUNDY	DTVPLN	DTVP1754	PLN
50A DC WASHINGTON	DTVPLN	DTVP1762	PLN

After Analysis

Results for: 49A VA HARRISONBURG	DTVPLN	DTVP1755	PLN
HAAT 638.0 m, ATV ERP 65.0 kW			
	POPULATION	AREA (sq km)	
within Noise Limited Contour	857082	28974.9	
not affected by terrain losses	476292	15630.9	
lost to NTSC IX	0	0.0	
lost to additional IX by ATV	5303	196.9	
lost to ATV IX only	5303	196.9	
lost to all IX	5303	196.9	

Potential Interfering Stations Included in above Scenario 8

48A DC WASHINGTON	BLCDDT	20000216AAT	LIC
49A NC RALEIGH	DTVPLN	DTVP1745	PLN
49A PA SCRANTON	DTVPLN	DTVP1750	PLN
49A VA GRUNDY	DTVPLN	DTVP1754	PLN
50A DC WASHINGTON	USERRECORD01		APP

Percent new IX = 0.0013%

Result key: 25

Scenario 9 Affected station 4  
Before Analysis

Results for: 49A VA HARRISONBURG	DTVPLN	DTVP1755	PLN
HAAT 638.0 m, ATV ERP 65.0 kW			
	POPULATION	AREA (sq km)	
within Noise Limited Contour	857082	28974.9	
not affected by terrain losses	476292	15630.9	
lost to NTSC IX	0	0.0	

Figure 3

lost to additional IX by ATV	5297	188.9
lost to ATV IX only	5297	188.9
lost to all IX	5297	188.9

Potential Interfering Stations Included in above Scenario 9

48A DC WASHINGTON	DTVPLN	DTVP1701	PLN
49A NC RALEIGH	BMPCDDT	20040329AKW	CP
49A PA SCRANTON	BLCDDT	20020807AAF	LIC
49A VA GRUNDY	BPCDDT	19991029AGK	CP
50A DC WASHINGTON	DTVPLN	DTVP1762	PLN

After Analysis

Results for: 49A VA HARRISONBURG	DTVPLN	DTVP1755	PLN
HAAT 638.0 m, ATV ERP 65.0 kW			
	POPULATION	AREA (sq km)	
within Noise Limited Contour	857082	28974.9	
not affected by terrain losses	476292	15630.9	
lost to NTSC IX	0	0.0	
lost to additional IX by ATV	5303	196.9	
lost to ATV IX only	5303	196.9	
lost to all IX	5303	196.9	

Potential Interfering Stations Included in above Scenario 9

48A DC WASHINGTON	DTVPLN	DTVP1701	PLN
49A NC RALEIGH	BMPCDDT	20040329AKW	CP
49A PA SCRANTON	BLCDDT	20020807AAF	LIC
49A VA GRUNDY	BPCDDT	19991029AGK	CP
50A DC WASHINGTON	USERRECORD01		APP

Percent new IX = 0.0013%

Result key: 26

Scenario 10 Affected station 4  
Before Analysis

Results for: 49A VA HARRISONBURG	DTVPLN	DTVP1755	PLN
HAAT 638.0 m, ATV ERP 65.0 kW			
	POPULATION	AREA (sq km)	
within Noise Limited Contour	857082	28974.9	
not affected by terrain losses	476292	15630.9	
lost to NTSC IX	0	0.0	
lost to additional IX by ATV	5297	188.9	
lost to ATV IX only	5297	188.9	
lost to all IX	5297	188.9	

Potential Interfering Stations Included in above Scenario 10

48A DC WASHINGTON	DTVPLN	DTVP1701	PLN
49A NC RALEIGH	BMPCDDT	20040329AKW	CP
49A PA SCRANTON	BLCDDT	20020807AAF	LIC
49A VA GRUNDY	DTVPLN	DTVP1754	PLN
50A DC WASHINGTON	DTVPLN	DTVP1762	PLN

After Analysis

Figure 3

Results for: 49A VA HARRISONBURG      DTVPLN      DTVP1755      PLN  
 HAAT 638.0 m, ATV ERP 65.0 kW

	POPULATION	AREA (sq km)
within Noise Limited Contour	857082	28974.9
not affected by terrain losses	476292	15630.9
lost to NTSC IX	0	0.0
lost to additional IX by ATV	5303	196.9
lost to ATV IX only	5303	196.9
lost to all IX	5303	196.9

Potential Interfering Stations Included in above Scenario 10

48A DC WASHINGTON	DTVPLN	DTVP1701	PLN
49A NC RALEIGH	BMPCDT	20040329AKW	CP
49A PA SCRANTON	BLCDT	20020807AAF	LIC
49A VA GRUNDY	DTVPLN	DTVP1754	PLN
50A DC WASHINGTON	USERRECORD01		APP

Percent new IX = 0.0013%

Result key: 27  
 Scenario 11 Affected station 4  
 Before Analysis

Results for: 49A VA HARRISONBURG      DTVPLN      DTVP1755      PLN  
 HAAT 638.0 m, ATV ERP 65.0 kW

	POPULATION	AREA (sq km)
within Noise Limited Contour	857082	28974.9
not affected by terrain losses	476292	15630.9
lost to NTSC IX	0	0.0
lost to additional IX by ATV	5297	188.9
lost to ATV IX only	5297	188.9
lost to all IX	5297	188.9

Potential Interfering Stations Included in above Scenario 11

48A DC WASHINGTON	DTVPLN	DTVP1701	PLN
49A NC RALEIGH	BMPCDT	20040329AKW	CP
49A PA SCRANTON	DTVPLN	DTVP1750	PLN
49A VA GRUNDY	BPCDT	19991029AGK	CP
50A DC WASHINGTON	DTVPLN	DTVP1762	PLN

After Analysis

Results for: 49A VA HARRISONBURG      DTVPLN      DTVP1755      PLN  
 HAAT 638.0 m, ATV ERP 65.0 kW

	POPULATION	AREA (sq km)
within Noise Limited Contour	857082	28974.9
not affected by terrain losses	476292	15630.9
lost to NTSC IX	0	0.0
lost to additional IX by ATV	5303	196.9
lost to ATV IX only	5303	196.9
lost to all IX	5303	196.9

Potential Interfering Stations Included in above Scenario 11

Figure 3

48A DC WASHINGTON	DTVPLN	DTVP1701	PLN
49A NC RALEIGH	BMPCDT	20040329AKW	CP
49A PA SCRANTON	DTVPLN	DTVP1750	PLN
49A VA GRUNDY	BPCDT	19991029AGK	CP
50A DC WASHINGTON	USERRECORD01		APP

Percent new IX = 0.0013%

Result key: 28  
 Scenario 12 Affected station 4  
 Before Analysis

Results for: 49A VA HARRISONBURG      DTVPLN      DTVP1755      PLN  
 HAAT 638.0 m, ATV ERP 65.0 kW

	POPULATION	AREA (sq km)
within Noise Limited Contour	857082	28974.9
not affected by terrain losses	476292	15630.9
lost to NTSC IX	0	0.0
lost to additional IX by ATV	5297	188.9
lost to ATV IX only	5297	188.9
lost to all IX	5297	188.9

Potential Interfering Stations Included in above Scenario 12

48A DC WASHINGTON	DTVPLN	DTVP1701	PLN
49A NC RALEIGH	BMPCDT	20040329AKW	CP
49A PA SCRANTON	DTVPLN	DTVP1750	PLN
49A VA GRUNDY	DTVPLN	DTVP1754	PLN
50A DC WASHINGTON	DTVPLN	DTVP1762	PLN

After Analysis

Results for: 49A VA HARRISONBURG      DTVPLN      DTVP1755      PLN  
 HAAT 638.0 m, ATV ERP 65.0 kW

	POPULATION	AREA (sq km)
within Noise Limited Contour	857082	28974.9
not affected by terrain losses	476292	15630.9
lost to NTSC IX	0	0.0
lost to additional IX by ATV	5303	196.9
lost to ATV IX only	5303	196.9
lost to all IX	5303	196.9

Potential Interfering Stations Included in above Scenario 12

48A DC WASHINGTON	DTVPLN	DTVP1701	PLN
49A NC RALEIGH	BMPCDT	20040329AKW	CP
49A PA SCRANTON	DTVPLN	DTVP1750	PLN
49A VA GRUNDY	DTVPLN	DTVP1754	PLN
50A DC WASHINGTON	USERRECORD01		APP

Percent new IX = 0.0013%

Result key: 29  
 Scenario 13 Affected station 4  
 Before Analysis

Results for: 49A VA HARRISONBURG      DTVPLN      DTVP1755      PLN

Figure 3

HAAT 638.0 m, ATV ERP 65.0 kW

	POPULATION	AREA (sq km)
within Noise Limited Contour	857082	28974.9
not affected by terrain losses	476292	15630.9
lost to NTSC IX	0	0.0
lost to additional IX by ATV	5297	188.9
lost to ATV IX only	5297	188.9
lost to all IX	5297	188.9

Potential Interfering Stations Included in above Scenario 13

48A DC WASHINGTON	DTVPLN	DTVP1701	PLN
49A NC RALEIGH	DTVPLN	DTVP1745	PLN
49A PA SCRANTON	BLCDT	20020807AAF	LIC
49A VA GRUNDY	BPCDT	19991029AGK	CP
50A DC WASHINGTON	DTVPLN	DTVP1762	PLN

After Analysis

Results for: 49A VA HARRISONBURG DTVPLN DTVP1755 PLN

HAAT 638.0 m, ATV ERP 65.0 kW

	POPULATION	AREA (sq km)
within Noise Limited Contour	857082	28974.9
not affected by terrain losses	476292	15630.9
lost to NTSC IX	0	0.0
lost to additional IX by ATV	5303	196.9
lost to ATV IX only	5303	196.9
lost to all IX	5303	196.9

Potential Interfering Stations Included in above Scenario 13

48A DC WASHINGTON	DTVPLN	DTVP1701	PLN
49A NC RALEIGH	DTVPLN	DTVP1745	PLN
49A PA SCRANTON	BLCDT	20020807AAF	LIC
49A VA GRUNDY	BPCDT	19991029AGK	CP
50A DC WASHINGTON	USERRECORD01		APP

Percent new IX = 0.0013%

Result key: 30

Scenario 14 Affected station 4

Before Analysis

Results for: 49A VA HARRISONBURG DTVPLN DTVP1755 PLN

HAAT 638.0 m, ATV ERP 65.0 kW

	POPULATION	AREA (sq km)
within Noise Limited Contour	857082	28974.9
not affected by terrain losses	476292	15630.9
lost to NTSC IX	0	0.0
lost to additional IX by ATV	5297	188.9
lost to ATV IX only	5297	188.9
lost to all IX	5297	188.9

Potential Interfering Stations Included in above Scenario 14

48A DC WASHINGTON	DTVPLN	DTVP1701	PLN
49A NC RALEIGH	DTVPLN	DTVP1745	PLN

Figure 3

49A PA SCRANTON	BLCDT	20020807AAF	LIC
49A VA GRUNDY	DTVPLN	DTVP1754	PLN
50A DC WASHINGTON	DTVPLN	DTVP1762	PLN

After Analysis

Results for: 49A VA HARRISONBURG DTVPLN DTVP1755 PLN

HAAT 638.0 m, ATV ERP 65.0 kW

	POPULATION	AREA (sq km)
within Noise Limited Contour	857082	28974.9
not affected by terrain losses	476292	15630.9
lost to NTSC IX	0	0.0
lost to additional IX by ATV	5303	196.9
lost to ATV IX only	5303	196.9
lost to all IX	5303	196.9

Potential Interfering Stations Included in above Scenario 14

48A DC WASHINGTON	DTVPLN	DTVP1701	PLN
49A NC RALEIGH	DTVPLN	DTVP1745	PLN
49A PA SCRANTON	BLCDT	20020807AAF	LIC
49A VA GRUNDY	DTVPLN	DTVP1754	PLN
50A DC WASHINGTON	USERRECORD01		APP

Percent new IX = 0.0013%

Result key: 31

Scenario 15 Affected station 4

Before Analysis

Results for: 49A VA HARRISONBURG DTVPLN DTVP1755 PLN

HAAT 638.0 m, ATV ERP 65.0 kW

	POPULATION	AREA (sq km)
within Noise Limited Contour	857082	28974.9
not affected by terrain losses	476292	15630.9
lost to NTSC IX	0	0.0
lost to additional IX by ATV	5297	188.9
lost to ATV IX only	5297	188.9
lost to all IX	5297	188.9

Potential Interfering Stations Included in above Scenario 15

48A DC WASHINGTON	DTVPLN	DTVP1701	PLN
49A NC RALEIGH	DTVPLN	DTVP1745	PLN
49A PA SCRANTON	DTVPLN	DTVP1750	PLN
49A VA GRUNDY	BPCDT	19991029AGK	CP
50A DC WASHINGTON	DTVPLN	DTVP1762	PLN

After Analysis

Results for: 49A VA HARRISONBURG DTVPLN DTVP1755 PLN

HAAT 638.0 m, ATV ERP 65.0 kW

	POPULATION	AREA (sq km)
within Noise Limited Contour	857082	28974.9
not affected by terrain losses	476292	15630.9
lost to NTSC IX	0	0.0
lost to additional IX by ATV	5303	196.9

Figure 3

```
lost to ATV IX only          5303      196.9
lost to all IX               5303      196.9

Potential Interfering Stations Included in above Scenario    15

48A DC WASHINGTON            DTVPLN    DTVP1701    PLN
49A NC RALEIGH              DTVPLN    DTVP1745    PLN
49A PA SCRANTON             DTVPLN    DTVP1750    PLN
49A VA GRUNDY               BPCDT     19991029AGK CP
50A DC WASHINGTON            USERRECORD01 APP

Percent new IX =      0.0013%

Result key:      32
Scenario      16 Affected station      4
Before Analysis

Results for: 49A VA HARRISONBURG            DTVPLN    DTVP1755    PLN
      HAAT  638.0 m, ATV ERP   65.0 kW
              POPULATION    AREA (sq km)
within Noise Limited Contour      857082    28974.9
not affected by terrain losses    476292    15630.9
lost to NTSC IX                    0         0.0
lost to additional IX by ATV        5297      188.9
lost to ATV IX only                5297      188.9
lost to all IX                     5297      188.9

Potential Interfering Stations Included in above Scenario    16

48A DC WASHINGTON            DTVPLN    DTVP1701    PLN
49A NC RALEIGH              DTVPLN    DTVP1745    PLN
49A PA SCRANTON             DTVPLN    DTVP1750    PLN
49A VA GRUNDY               DTVPLN    DTVP1754    PLN
50A DC WASHINGTON            DTVPLN    DTVP1762    PLN

After Analysis

Results for: 49A VA HARRISONBURG            DTVPLN    DTVP1755    PLN
      HAAT  638.0 m, ATV ERP   65.0 kW
              POPULATION    AREA (sq km)
within Noise Limited Contour      857082    28974.9
not affected by terrain losses    476292    15630.9
lost to NTSC IX                    0         0.0
lost to additional IX by ATV        5303      196.9
lost to ATV IX only                5303      196.9
lost to all IX                     5303      196.9

Potential Interfering Stations Included in above Scenario    16

48A DC WASHINGTON            DTVPLN    DTVP1701    PLN
49A NC RALEIGH              DTVPLN    DTVP1745    PLN
49A PA SCRANTON             DTVPLN    DTVP1750    PLN
49A VA GRUNDY               DTVPLN    DTVP1754    PLN
50A DC WASHINGTON            USERRECORD01 APP

Percent new IX =      0.0013%
```

Figure 3

```
Worst case new IX      0.0013% Scenario      1

#####

Analysis of Interference to Affected Station      5

Analysis of current record
Channel      Call      City/State      Application Ref. No.
50           WQLN      ERIE PA          BLEDT      -20060601BCQ

Stations Potentially Affecting This Station

Chan  Call      City/State      Dist(km) Status Application Ref. No.
50    WDCW      WASHINGTON DC    428.0  PLN    DTVPLN    -DTV1762
50    WEOA      AKRON OH        168.5  LIC    BLEDT     -20040928AQT
50    WEOA      AKRON OH        168.5  PLN    DTVPLN    -DTV1772
50    WPCB-TV    GREENSBURG PA    184.9  LIC    BLCDT     -20030409ABC
50    WPCB-TV    GREENSBURG PA    184.9  PLN    DTVPLN    -DTV1776
51    WTAE-TV    PITTSBURGH PA    197.1  LIC    BLCDT     -20041014AEY
51    WTAE-TV    PITTSBURGH PA    197.1  PLN    DTVPLN    -DTV1809
50    WDCW      WASHINGTON DC    428.0  APP    USERRECORD-01
Proposal causes no interference

#####

Analysis of Interference to Affected Station      6

Analysis of current record
Channel      Call      City/State      Application Ref. No.
50           WQLN      ERIE PA          DTVPLN    -DTV1775

Stations Potentially Affecting This Station

Chan  Call      City/State      Dist(km) Status Application Ref. No.
50    WDCW      WASHINGTON DC    428.0  PLN    DTVPLN    -DTV1762
50    WEOA      AKRON OH        168.5  LIC    BLEDT     -20040928AQT
50    WEOA      AKRON OH        168.5  PLN    DTVPLN    -DTV1772
50    WPCB-TV    GREENSBURG PA    184.9  LIC    BLCDT     -20030409ABC
50    WPCB-TV    GREENSBURG PA    184.9  PLN    DTVPLN    -DTV1776
51    WTAE-TV    PITTSBURGH PA    197.1  LIC    BLCDT     -20041014AEY
51    WTAE-TV    PITTSBURGH PA    197.1  PLN    DTVPLN    -DTV1809
50    WDCW      WASHINGTON DC    428.0  APP    USERRECORD-01
Proposal causes no interference

#####

Analysis of Interference to Affected Station      7

Analysis of current record
Channel      Call      City/State      Application Ref. No.
50           WQLN      ERIE PA          BMPEDT     -20000412AAR
```

Figure 3

Stations Potentially Affecting This Station

Chan	Call	City/State	Dist(km)	Status	Application Ref. No.
50	WDCW	WASHINGTON DC	428.0	PLN	DTVPLN -DTV1762
50	WEAO	AKRON OH	168.5	LIC	BLEDT -20040928AQT
50	WEAO	AKRON OH	168.5	PLN	DTVPLN -DTV1772
50	WPCB-TV	GREENSBURG PA	184.9	LIC	BLCDDT -20030409ABC
50	WPCB-TV	GREENSBURG PA	184.9	PLN	DTVPLN -DTV1776
51	WTAE-TV	PITTSBURGH PA	197.1	LIC	BLCDDT -20041014AEY
51	WTAE-TV	PITTSBURGH PA	197.1	PLN	DTVPLN -DTV1809
50	WDCW	WASHINGTON DC	428.0	APP	USERRECORD-01

Proposal causes no interference

#####

Analysis of Interference to Affected Station 8

Analysis of current record

Channel	Call	City/State	Application Ref. No.
50	WPCB-TV	GREENSBURG PA	BLCDDT -20030409ABC

Stations Potentially Affecting This Station

Chan	Call	City/State	Dist(km)	Status	Application Ref. No.
49	WHSV-TV	HARRISONBURG VA	222.2	LIC	BLCDDT -20060413ACO
49	WHSV-TV	HARRISONBURG VA	222.2	PLN	DTVPLN -DTV1755
49	WTAP-TV	PARKERSBURG WV	191.3	LIC	BLCDDT -20040423ABG
49	WTAP-TV	PARKERSBURG WV	191.3	PLN	DTVPLN -DTV1757
50	WDCW	WASHINGTON DC	284.3	PLN	DTVPLN -DTV1762
50	WEAO	AKRON OH	173.8	LIC	BLEDT -20040928AQT
50	WEAO	AKRON OH	173.8	PLN	DTVPLN -DTV1772
50	WDTN	DAYTON OH	387.9	LIC	BLCDDT -20050629AAL
50	WDTN	DAYTON OH	387.9	PLN	DTVPLN -DTV1773
50	WQLN	ERIE PA	184.9	LIC	BLEDT -20060601BCQ
50	WQLN	ERIE PA	184.9	PLN	DTVPLN -DTV1775
50	WQLN	ERIE PA	184.9	APP	BMPEDT -20000412AAR
50	WOAY-TV	OAK HILL WV	295.3	LIC	BLCDDT -20070426AAK
50	WOAY-TV	OAK HILL WV	295.3	PLN	DTVPLN -DTV1784
51	WTAE-TV	PITTSBURGH PA	12.6	LIC	BLCDDT -20041014AEY
51	WTAE-TV	PITTSBURGH PA	12.6	PLN	DTVPLN -DTV1809
50	WDCW	WASHINGTON DC	284.3	APP	USERRECORD-01

Total scenarios = 24

Result key: 33  
Scenario 1 Affected station 8  
Before Analysis

Results for: 50A PA GREENSBURG BLCDDT 20030409ABC LIC

HAAT	264.0 m, ATV ERP	362.0 kW	POPULATION	AREA (sq km)
within Noise Limited Contour	2831860	19269.0		
not affected by terrain losses	2709362	17552.3		

Figure 3

lost to NTSC IX	0	0.0
lost to additional IX by ATV	58016	1034.8
lost to ATV IX only	58016	1034.8
lost to all IX	58016	1034.8

Potential Interfering Stations Included in above Scenario 1

50A OH AKRON	BLEDT	20040928AQT	LIC
50A PA ERIE	BLEDT	20060601BCQ	LIC
50A WV OAK HILL	BLCDDT	20070426AAK	LIC
51A PA PITTSBURGH	BLCDDT	20041014AEY	LIC

After Analysis

Results for: 50A PA GREENSBURG BLCDDT 20030409ABC LIC

HAAT	264.0 m, ATV ERP	362.0 kW	POPULATION	AREA (sq km)
within Noise Limited Contour	2831860	19269.0		
not affected by terrain losses	2709362	17552.3		
lost to NTSC IX	0	0.0		
lost to additional IX by ATV	58080	1038.9		
lost to ATV IX only	58080	1038.9		
lost to all IX	58080	1038.9		

Potential Interfering Stations Included in above Scenario 1

50A OH AKRON	BLEDT	20040928AQT	LIC
50A PA ERIE	BLEDT	20060601BCQ	LIC
50A WV OAK HILL	BLCDDT	20070426AAK	LIC
51A PA PITTSBURGH	BLCDDT	20041014AEY	LIC
50A DC WASHINGTON	USERRECORD01		APP

Percent new IX = 0.0024%

Result key: 34  
Scenario 2 Affected station 8  
Before Analysis

Results for: 50A PA GREENSBURG BLCDDT 20030409ABC LIC

HAAT	264.0 m, ATV ERP	362.0 kW	POPULATION	AREA (sq km)
within Noise Limited Contour	2831860	19269.0		
not affected by terrain losses	2709362	17552.3		
lost to NTSC IX	0	0.0		
lost to additional IX by ATV	58016	1034.8		
lost to ATV IX only	58016	1034.8		
lost to all IX	58016	1034.8		

Potential Interfering Stations Included in above Scenario 2

50A OH AKRON	BLEDT	20040928AQT	LIC
50A PA ERIE	BLEDT	20060601BCQ	LIC
50A WV OAK HILL	BLCDDT	20070426AAK	LIC
51A PA PITTSBURGH	DTVPLN	DTV1809	PLN

After Analysis

Figure 3

Results for: 50A PA GREENSBURG      BLCDT      20030409ABC   LIC  
 HAAT 264.0 m, ATV ERP 362.0 kW

	POPULATION	AREA (sq km)
within Noise Limited Contour	2831860	19269.0
not affected by terrain losses	2709362	17552.3
lost to NTSC IX	0	0.0
lost to additional IX by ATV	58080	1038.9
lost to ATV IX only	58080	1038.9
lost to all IX	58080	1038.9

Potential Interfering Stations Included in above Scenario 2

50A OH AKRON	BLEDT	20040928AQT	LIC
50A PA ERIE	BLEDT	20060601BCQ	LIC
50A WV OAK HILL	BLCDT	20070426AAK	LIC
51A PA PITTSBURGH	DTVPLN	DTVP1809	PLN
50A DC WASHINGTON	USERRECORD01		APP

Percent new IX = 0.0024%

Result key: 35  
 Scenario 3 Affected station 8  
 Before Analysis

Results for: 50A PA GREENSBURG      BLCDT      20030409ABC   LIC  
 HAAT 264.0 m, ATV ERP 362.0 kW

	POPULATION	AREA (sq km)
within Noise Limited Contour	2831860	19269.0
not affected by terrain losses	2709362	17552.3
lost to NTSC IX	0	0.0
lost to additional IX by ATV	58494	1054.9
lost to ATV IX only	58494	1054.9
lost to all IX	58494	1054.9

Potential Interfering Stations Included in above Scenario 3

50A OH AKRON	BLEDT	20040928AQT	LIC
50A PA ERIE	BLEDT	20060601BCQ	LIC
50A WV OAK HILL	DTVPLN	DTVP1784	PLN
51A PA PITTSBURGH	BLCDT	20041014AEY	LIC

After Analysis

Results for: 50A PA GREENSBURG      BLCDT      20030409ABC   LIC  
 HAAT 264.0 m, ATV ERP 362.0 kW

	POPULATION	AREA (sq km)
within Noise Limited Contour	2831860	19269.0
not affected by terrain losses	2709362	17552.3
lost to NTSC IX	0	0.0
lost to additional IX by ATV	58558	1058.9
lost to ATV IX only	58558	1058.9
lost to all IX	58558	1058.9

Potential Interfering Stations Included in above Scenario 3

50A OH AKRON	BLEDT	20040928AQT	LIC
50A PA ERIE	BLEDT	20060601BCQ	LIC

Figure 3

50A WV OAK HILL	DTVPLN	DTVP1784	PLN
51A PA PITTSBURGH	BLCDT	20041014AEY	LIC
50A DC WASHINGTON	USERRECORD01		APP

Percent new IX = 0.0024%

Result key: 36  
 Scenario 4 Affected station 8  
 Before Analysis

Results for: 50A PA GREENSBURG      BLCDT      20030409ABC   LIC  
 HAAT 264.0 m, ATV ERP 362.0 kW

	POPULATION	AREA (sq km)
within Noise Limited Contour	2831860	19269.0
not affected by terrain losses	2709362	17552.3
lost to NTSC IX	0	0.0
lost to additional IX by ATV	58494	1054.9
lost to ATV IX only	58494	1054.9
lost to all IX	58494	1054.9

Potential Interfering Stations Included in above Scenario 4

50A OH AKRON	BLEDT	20040928AQT	LIC
50A PA ERIE	BLEDT	20060601BCQ	LIC
50A WV OAK HILL	DTVPLN	DTVP1784	PLN
51A PA PITTSBURGH	DTVPLN	DTVP1809	PLN

After Analysis

Results for: 50A PA GREENSBURG      BLCDT      20030409ABC   LIC  
 HAAT 264.0 m, ATV ERP 362.0 kW

	POPULATION	AREA (sq km)
within Noise Limited Contour	2831860	19269.0
not affected by terrain losses	2709362	17552.3
lost to NTSC IX	0	0.0
lost to additional IX by ATV	58558	1058.9
lost to ATV IX only	58558	1058.9
lost to all IX	58558	1058.9

Potential Interfering Stations Included in above Scenario 4

50A OH AKRON	BLEDT	20040928AQT	LIC
50A PA ERIE	BLEDT	20060601BCQ	LIC
50A WV OAK HILL	DTVPLN	DTVP1784	PLN
51A PA PITTSBURGH	DTVPLN	DTVP1809	PLN
50A DC WASHINGTON	USERRECORD01		APP

Percent new IX = 0.0024%

Result key: 37  
 Scenario 5 Affected station 8  
 Before Analysis

Results for: 50A PA GREENSBURG      BLCDT      20030409ABC   LIC  
 HAAT 264.0 m, ATV ERP 362.0 kW

	POPULATION	AREA (sq km)
within Noise Limited Contour	2831860	19269.0

Figure 3

not affected by terrain losses	2709362	17552.3	
lost to NTSC IX	0	0.0	
lost to additional IX by ATV	62147	1099.0	
lost to ATV IX only	62147	1099.0	
lost to all IX	62147	1099.0	

Potential Interfering Stations Included in above Scenario 5

50A OH AKRON	BLEDT	20040928AQT	LIC
50A PA ERIE	DTVPLN	DTVP1775	PLN
50A WV OAK HILL	BLCDT	20070426AAK	LIC
51A PA PITTSBURGH	BLCDT	20041014AEY	LIC

After Analysis

Results for: 50A PA GREENSBURG      BLCDT      20030409ABC    LIC

HAAT    264.0 m, ATV ERP    362.0 kW	POPULATION	AREA (sq km)
within Noise Limited Contour	2831860	19269.0
not affected by terrain losses	2709362	17552.3
lost to NTSC IX	0	0.0
lost to additional IX by ATV	62211	1103.0
lost to ATV IX only	62211	1103.0
lost to all IX	62211	1103.0

Potential Interfering Stations Included in above Scenario 5

50A OH AKRON	BLEDT	20040928AQT	LIC
50A PA ERIE	DTVPLN	DTVP1775	PLN
50A WV OAK HILL	BLCDT	20070426AAK	LIC
51A PA PITTSBURGH	BLCDT	20041014AEY	LIC
50A DC WASHINGTON	USERRECORD01		APP

Percent new IX =      0.0024%

Result key:      38

Scenario      6    Affected station      8

Before Analysis

Results for: 50A PA GREENSBURG      BLCDT      20030409ABC    LIC

HAAT    264.0 m, ATV ERP    362.0 kW	POPULATION	AREA (sq km)
within Noise Limited Contour	2831860	19269.0
not affected by terrain losses	2709362	17552.3
lost to NTSC IX	0	0.0
lost to additional IX by ATV	62147	1099.0
lost to ATV IX only	62147	1099.0
lost to all IX	62147	1099.0

Potential Interfering Stations Included in above Scenario 6

50A OH AKRON	BLEDT	20040928AQT	LIC
50A PA ERIE	DTVPLN	DTVP1775	PLN
50A WV OAK HILL	BLCDT	20070426AAK	LIC
51A PA PITTSBURGH	DTVPLN	DTVP1809	PLN

After Analysis

Figure 3

Results for: 50A PA GREENSBURG      BLCDT      20030409ABC    LIC

HAAT    264.0 m, ATV ERP    362.0 kW	POPULATION	AREA (sq km)
within Noise Limited Contour	2831860	19269.0
not affected by terrain losses	2709362	17552.3
lost to NTSC IX	0	0.0
lost to additional IX by ATV	62211	1103.0
lost to ATV IX only	62211	1103.0
lost to all IX	62211	1103.0

Potential Interfering Stations Included in above Scenario 6

50A OH AKRON	BLEDT	20040928AQT	LIC
50A PA ERIE	DTVPLN	DTVP1775	PLN
50A WV OAK HILL	BLCDT	20070426AAK	LIC
51A PA PITTSBURGH	DTVPLN	DTVP1809	PLN
50A DC WASHINGTON	USERRECORD01		APP

Percent new IX =      0.0024%

Result key:      39

Scenario      7    Affected station      8

Before Analysis

Results for: 50A PA GREENSBURG      BLCDT      20030409ABC    LIC

HAAT    264.0 m, ATV ERP    362.0 kW	POPULATION	AREA (sq km)
within Noise Limited Contour	2831860	19269.0
not affected by terrain losses	2709362	17552.3
lost to NTSC IX	0	0.0
lost to additional IX by ATV	62625	1119.1
lost to ATV IX only	62625	1119.1
lost to all IX	62625	1119.1

Potential Interfering Stations Included in above Scenario 7

50A OH AKRON	BLEDT	20040928AQT	LIC
50A PA ERIE	DTVPLN	DTVP1775	PLN
50A WV OAK HILL	DTVPLN	DTVP1784	PLN
51A PA PITTSBURGH	BLCDT	20041014AEY	LIC

After Analysis

Results for: 50A PA GREENSBURG      BLCDT      20030409ABC    LIC

HAAT    264.0 m, ATV ERP    362.0 kW	POPULATION	AREA (sq km)
within Noise Limited Contour	2831860	19269.0
not affected by terrain losses	2709362	17552.3
lost to NTSC IX	0	0.0
lost to additional IX by ATV	62689	1123.1
lost to ATV IX only	62689	1123.1
lost to all IX	62689	1123.1

Potential Interfering Stations Included in above Scenario 7

50A OH AKRON	BLEDT	20040928AQT	LIC
--------------	-------	-------------	-----



Figure 3

50A PA ERIE	DTVPLN	DTVP1775	PLN
50A WV OAK HILL	DTVPLN	DTVP1784	PLN
51A PA PITTSBURGH	BLCDT	20041014AEY	LIC
50A DC WASHINGTON	USERRECORD01		APP

Percent new IX = 0.0024%

Result key: 40  
 Scenario 8 Affected station 8  
 Before Analysis

Results for: 50A PA GREENSBURG BLCDT 20030409ABC LIC

HAAT 264.0 m, ATV ERP 362.0 kW	POPULATION	AREA (sq km)
within Noise Limited Contour	2831860	19269.0
not affected by terrain losses	2709362	17552.3
lost to NTSC IX	0	0.0
lost to additional IX by ATV	62625	1119.1
lost to ATV IX only	62625	1119.1
lost to all IX	62625	1119.1

Potential Interfering Stations Included in above Scenario 8

50A OH AKRON	BLEDT	20040928AQT	LIC
50A PA ERIE	DTVPLN	DTVP1775	PLN
50A WV OAK HILL	DTVPLN	DTVP1784	PLN
51A PA PITTSBURGH	DTVPLN	DTVP1809	PLN

After Analysis

Results for: 50A PA GREENSBURG BLCDT 20030409ABC LIC

HAAT 264.0 m, ATV ERP 362.0 kW	POPULATION	AREA (sq km)
within Noise Limited Contour	2831860	19269.0
not affected by terrain losses	2709362	17552.3
lost to NTSC IX	0	0.0
lost to additional IX by ATV	62689	1123.1
lost to ATV IX only	62689	1123.1
lost to all IX	62689	1123.1

Potential Interfering Stations Included in above Scenario 8

50A OH AKRON	BLEDT	20040928AQT	LIC
50A PA ERIE	DTVPLN	DTVP1775	PLN
50A WV OAK HILL	DTVPLN	DTVP1784	PLN
51A PA PITTSBURGH	DTVPLN	DTVP1809	PLN
50A DC WASHINGTON	USERRECORD01		APP

Percent new IX = 0.0024%

Result key: 41  
 Scenario 9 Affected station 8  
 Before Analysis

Results for: 50A PA GREENSBURG BLCDT 20030409ABC LIC

HAAT 264.0 m, ATV ERP 362.0 kW	POPULATION	AREA (sq km)
--------------------------------	------------	--------------

Figure 3

within Noise Limited Contour	2831860	19269.0
not affected by terrain losses	2709362	17552.3
lost to NTSC IX	0	0.0
lost to additional IX by ATV	58016	1034.8
lost to ATV IX only	58016	1034.8
lost to all IX	58016	1034.8

Potential Interfering Stations Included in above Scenario 9

50A OH AKRON	DTVPLN	DTVP1772	PLN
50A PA ERIE	BLEDT	20060601BCQ	LIC
50A WV OAK HILL	BLCDT	20070426AAK	LIC
51A PA PITTSBURGH	BLCDT	20041014AEY	LIC

After Analysis

Results for: 50A PA GREENSBURG BLCDT 20030409ABC LIC

HAAT 264.0 m, ATV ERP 362.0 kW	POPULATION	AREA (sq km)
within Noise Limited Contour	2831860	19269.0
not affected by terrain losses	2709362	17552.3
lost to NTSC IX	0	0.0
lost to additional IX by ATV	58080	1038.9
lost to ATV IX only	58080	1038.9
lost to all IX	58080	1038.9

Potential Interfering Stations Included in above Scenario 9

50A OH AKRON	DTVPLN	DTVP1772	PLN
50A PA ERIE	BLEDT	20060601BCQ	LIC
50A WV OAK HILL	BLCDT	20070426AAK	LIC
51A PA PITTSBURGH	BLCDT	20041014AEY	LIC
50A DC WASHINGTON	USERRECORD01		APP

Percent new IX = 0.0024%

Result key: 42  
 Scenario 10 Affected station 8  
 Before Analysis

Results for: 50A PA GREENSBURG BLCDT 20030409ABC LIC

HAAT 264.0 m, ATV ERP 362.0 kW	POPULATION	AREA (sq km)
within Noise Limited Contour	2831860	19269.0
not affected by terrain losses	2709362	17552.3
lost to NTSC IX	0	0.0
lost to additional IX by ATV	58016	1034.8
lost to ATV IX only	58016	1034.8
lost to all IX	58016	1034.8

Potential Interfering Stations Included in above Scenario 10

50A OH AKRON	DTVPLN	DTVP1772	PLN
50A PA ERIE	BLEDT	20060601BCQ	LIC
50A WV OAK HILL	BLCDT	20070426AAK	LIC
51A PA PITTSBURGH	DTVPLN	DTVP1809	PLN

Figure 3

## After Analysis

Results for: 50A PA GREENSBURG                      BLCDT              20030409ABC   LIC  
 HAAT   264.0 m, ATV ERP   362.0 kW

	POPULATION	AREA (sq km)
within Noise Limited Contour	2831860	19269.0
not affected by terrain losses	2709362	17552.3
lost to NTSC IX	0	0.0
lost to additional IX by ATV	58080	1038.9
lost to ATV IX only	58080	1038.9
lost to all IX	58080	1038.9

Potential Interfering Stations Included in above Scenario      10

50A OH AKRON	DTVPLN	DTVP1772	PLN
50A PA ERIE	BLEDT	20060601BCQ	LIC
50A WV OAK HILL	BLCDT	20070426AAK	LIC
51A PA PITTSBURGH	DTVPLN	DTVP1809	PLN
50A DC WASHINGTON	USERRECORD01		APP

Percent new IX =      0.0024%

Result key:              43  
 Scenario              11   Affected station              8  
 Before Analysis

Results for: 50A PA GREENSBURG                      BLCDT              20030409ABC   LIC  
 HAAT   264.0 m, ATV ERP   362.0 kW

	POPULATION	AREA (sq km)
within Noise Limited Contour	2831860	19269.0
not affected by terrain losses	2709362	17552.3
lost to NTSC IX	0	0.0
lost to additional IX by ATV	58494	1054.9
lost to ATV IX only	58494	1054.9
lost to all IX	58494	1054.9

Potential Interfering Stations Included in above Scenario      11

50A OH AKRON	DTVPLN	DTVP1772	PLN
50A PA ERIE	BLEDT	20060601BCQ	LIC
50A WV OAK HILL	DTVPLN	DTVP1784	PLN
51A PA PITTSBURGH	BLCDT	20041014AEY	LIC

## After Analysis

Results for: 50A PA GREENSBURG                      BLCDT              20030409ABC   LIC  
 HAAT   264.0 m, ATV ERP   362.0 kW

	POPULATION	AREA (sq km)
within Noise Limited Contour	2831860	19269.0
not affected by terrain losses	2709362	17552.3
lost to NTSC IX	0	0.0
lost to additional IX by ATV	58558	1058.9
lost to ATV IX only	58558	1058.9
lost to all IX	58558	1058.9

Potential Interfering Stations Included in above Scenario      11

Figure 3

50A OH AKRON	DTVPLN	DTVP1772	PLN
50A PA ERIE	BLEDT	20060601BCQ	LIC
50A WV OAK HILL	DTVPLN	DTVP1784	PLN
51A PA PITTSBURGH	BLCDT	20041014AEY	LIC
50A DC WASHINGTON	USERRECORD01		APP

Percent new IX =      0.0024%

Result key:              44  
 Scenario              12   Affected station              8  
 Before Analysis

Results for: 50A PA GREENSBURG                      BLCDT              20030409ABC   LIC  
 HAAT   264.0 m, ATV ERP   362.0 kW

	POPULATION	AREA (sq km)
within Noise Limited Contour	2831860	19269.0
not affected by terrain losses	2709362	17552.3
lost to NTSC IX	0	0.0
lost to additional IX by ATV	58494	1054.9
lost to ATV IX only	58494	1054.9
lost to all IX	58494	1054.9

Potential Interfering Stations Included in above Scenario      12

50A OH AKRON	DTVPLN	DTVP1772	PLN
50A PA ERIE	BLEDT	20060601BCQ	LIC
50A WV OAK HILL	DTVPLN	DTVP1784	PLN
51A PA PITTSBURGH	DTVPLN	DTVP1809	PLN

## After Analysis

Results for: 50A PA GREENSBURG                      BLCDT              20030409ABC   LIC  
 HAAT   264.0 m, ATV ERP   362.0 kW

	POPULATION	AREA (sq km)
within Noise Limited Contour	2831860	19269.0
not affected by terrain losses	2709362	17552.3
lost to NTSC IX	0	0.0
lost to additional IX by ATV	58558	1058.9
lost to ATV IX only	58558	1058.9
lost to all IX	58558	1058.9

Potential Interfering Stations Included in above Scenario      12

50A OH AKRON	DTVPLN	DTVP1772	PLN
50A PA ERIE	BLEDT	20060601BCQ	LIC
50A WV OAK HILL	DTVPLN	DTVP1784	PLN
51A PA PITTSBURGH	DTVPLN	DTVP1809	PLN
50A DC WASHINGTON	USERRECORD01		APP

Percent new IX =      0.0024%

Result key:              45  
 Scenario              13   Affected station              8  
 Before Analysis

Results for: 50A PA GREENSBURG                      BLCDT              20030409ABC   LIC  
 HAAT   264.0 m, ATV ERP   362.0 kW

Figure 3

	POPULATION	AREA (sq km)	
within Noise Limited Contour	2831860	19269.0	
not affected by terrain losses	2709362	17552.3	
lost to NTSC IX	0	0.0	
lost to additional IX by ATV	62147	1099.0	
lost to ATV IX only	62147	1099.0	
lost to all IX	62147	1099.0	
Potential Interfering Stations Included in above Scenario			13
50A OH AKRON	DTVPLN	DTVP1772	PLN
50A PA ERIE	DTVPLN	DTVP1775	PLN
50A WV OAK HILL	BLCDT	20070426AAK	LIC
51A PA PITTSBURGH	BLCDT	20041014AEY	LIC
After Analysis			
Results for: 50A PA GREENSBURG	BLCDT	20030409ABC	LIC
HAAT 264.0 m, ATV ERP 362.0 kW			
	POPULATION	AREA (sq km)	
within Noise Limited Contour	2831860	19269.0	
not affected by terrain losses	2709362	17552.3	
lost to NTSC IX	0	0.0	
lost to additional IX by ATV	62211	1103.0	
lost to ATV IX only	62211	1103.0	
lost to all IX	62211	1103.0	
Potential Interfering Stations Included in above Scenario			13
50A OH AKRON	DTVPLN	DTVP1772	PLN
50A PA ERIE	DTVPLN	DTVP1775	PLN
50A WV OAK HILL	BLCDT	20070426AAK	LIC
51A PA PITTSBURGH	BLCDT	20041014AEY	LIC
50A DC WASHINGTON	USERRECORD01		APP
Percent new IX =	0.0024%		
Result key:	46		
Scenario	14	Affected station	8
Before Analysis			
Results for: 50A PA GREENSBURG	BLCDT	20030409ABC	LIC
HAAT 264.0 m, ATV ERP 362.0 kW			
	POPULATION	AREA (sq km)	
within Noise Limited Contour	2831860	19269.0	
not affected by terrain losses	2709362	17552.3	
lost to NTSC IX	0	0.0	
lost to additional IX by ATV	62147	1099.0	
lost to ATV IX only	62147	1099.0	
lost to all IX	62147	1099.0	
Potential Interfering Stations Included in above Scenario			14
50A OH AKRON	DTVPLN	DTVP1772	PLN
50A PA ERIE	DTVPLN	DTVP1775	PLN
50A WV OAK HILL	BLCDT	20070426AAK	LIC
51A PA PITTSBURGH	DTVPLN	DTVP1809	PLN

Figure 3

After Analysis			
Results for: 50A PA GREENSBURG	BLCDT	20030409ABC	LIC
HAAT 264.0 m, ATV ERP 362.0 kW			
	POPULATION	AREA (sq km)	
within Noise Limited Contour	2831860	19269.0	
not affected by terrain losses	2709362	17552.3	
lost to NTSC IX	0	0.0	
lost to additional IX by ATV	62211	1103.0	
lost to ATV IX only	62211	1103.0	
lost to all IX	62211	1103.0	
Potential Interfering Stations Included in above Scenario			14
50A OH AKRON	DTVPLN	DTVP1772	PLN
50A PA ERIE	DTVPLN	DTVP1775	PLN
50A WV OAK HILL	BLCDT	20070426AAK	LIC
51A PA PITTSBURGH	DTVPLN	DTVP1809	PLN
50A DC WASHINGTON	USERRECORD01		APP
Percent new IX =	0.0024%		
Result key:	47		
Scenario	15	Affected station	8
Before Analysis			
Results for: 50A PA GREENSBURG	BLCDT	20030409ABC	LIC
HAAT 264.0 m, ATV ERP 362.0 kW			
	POPULATION	AREA (sq km)	
within Noise Limited Contour	2831860	19269.0	
not affected by terrain losses	2709362	17552.3	
lost to NTSC IX	0	0.0	
lost to additional IX by ATV	62625	1119.1	
lost to ATV IX only	62625	1119.1	
lost to all IX	62625	1119.1	
Potential Interfering Stations Included in above Scenario			15
50A OH AKRON	DTVPLN	DTVP1772	PLN
50A PA ERIE	DTVPLN	DTVP1775	PLN
50A WV OAK HILL	DTVPLN	DTVP1784	PLN
51A PA PITTSBURGH	BLCDT	20041014AEY	LIC
After Analysis			
Results for: 50A PA GREENSBURG	BLCDT	20030409ABC	LIC
HAAT 264.0 m, ATV ERP 362.0 kW			
	POPULATION	AREA (sq km)	
within Noise Limited Contour	2831860	19269.0	
not affected by terrain losses	2709362	17552.3	
lost to NTSC IX	0	0.0	
lost to additional IX by ATV	62689	1123.1	
lost to ATV IX only	62689	1123.1	
lost to all IX	62689	1123.1	
Potential Interfering Stations Included in above Scenario			15

Figure 3

50A OH AKRON	DTVPLN	DTVP1772	PLN
50A PA ERIE	DTVPLN	DTVP1775	PLN
50A WV OAK HILL	DTVPLN	DTVP1784	PLN
51A PA PITTSBURGH	BLCDDT	20041014AEY	LIC
50A DC WASHINGTON	USERRECORD01		APP

Percent new IX = 0.0024%

Result key: 48  
Scenario 16 Affected station 8  
Before Analysis

Results for: 50A PA GREENSBURG BLCDDT 20030409ABC LIC  
HAAT 264.0 m, ATV ERP 362.0 kW

	POPULATION	AREA (sq km)
within Noise Limited Contour	2831860	19269.0
not affected by terrain losses	2709362	17552.3
lost to NTSC IX	0	0.0
lost to additional IX by ATV	62625	1119.1
lost to ATV IX only	62625	1119.1
lost to all IX	62625	1119.1

Potential Interfering Stations Included in above Scenario 16

50A OH AKRON	DTVPLN	DTVP1772	PLN
50A PA ERIE	DTVPLN	DTVP1775	PLN
50A WV OAK HILL	DTVPLN	DTVP1784	PLN
51A PA PITTSBURGH	DTVPLN	DTVP1809	PLN

After Analysis

Results for: 50A PA GREENSBURG BLCDDT 20030409ABC LIC  
HAAT 264.0 m, ATV ERP 362.0 kW

	POPULATION	AREA (sq km)
within Noise Limited Contour	2831860	19269.0
not affected by terrain losses	2709362	17552.3
lost to NTSC IX	0	0.0
lost to additional IX by ATV	62689	1123.1
lost to ATV IX only	62689	1123.1
lost to all IX	62689	1123.1

Potential Interfering Stations Included in above Scenario 16

50A OH AKRON	DTVPLN	DTVP1772	PLN
50A PA ERIE	DTVPLN	DTVP1775	PLN
50A WV OAK HILL	DTVPLN	DTVP1784	PLN
51A PA PITTSBURGH	DTVPLN	DTVP1809	PLN
50A DC WASHINGTON	USERRECORD01		APP

Percent new IX = 0.0024%

Result key: 49  
Scenario 17 Affected station 8  
Before Analysis

Results for: 50A PA GREENSBURG BLCDDT 20030409ABC LIC

Figure 3

HAAT 264.0 m, ATV ERP 362.0 kW		
	POPULATION	AREA (sq km)
within Noise Limited Contour	2831860	19269.0
not affected by terrain losses	2709362	17552.3
lost to NTSC IX	0	0.0
lost to additional IX by ATV	62147	1099.0
lost to ATV IX only	62147	1099.0
lost to all IX	62147	1099.0

Potential Interfering Stations Included in above Scenario 17

50A OH AKRON	BLEDT	20040928AQT	LIC
50A PA ERIE	BMPEDT	20000412AAR	APP
50A WV OAK HILL	BLCDDT	20070426AAK	LIC
51A PA PITTSBURGH	BLCDDT	20041014AEY	LIC

After Analysis

Results for: 50A PA GREENSBURG BLCDDT 20030409ABC LIC  
HAAT 264.0 m, ATV ERP 362.0 kW

	POPULATION	AREA (sq km)
within Noise Limited Contour	2831860	19269.0
not affected by terrain losses	2709362	17552.3
lost to NTSC IX	0	0.0
lost to additional IX by ATV	62211	1103.0
lost to ATV IX only	62211	1103.0
lost to all IX	62211	1103.0

Potential Interfering Stations Included in above Scenario 17

50A OH AKRON	BLEDT	20040928AQT	LIC
50A PA ERIE	BMPEDT	20000412AAR	APP
50A WV OAK HILL	BLCDDT	20070426AAK	LIC
51A PA PITTSBURGH	BLCDDT	20041014AEY	LIC
50A DC WASHINGTON	USERRECORD01		APP

Percent new IX = 0.0024%

Result key: 50  
Scenario 18 Affected station 8  
Before Analysis

Results for: 50A PA GREENSBURG BLCDDT 20030409ABC LIC  
HAAT 264.0 m, ATV ERP 362.0 kW

	POPULATION	AREA (sq km)
within Noise Limited Contour	2831860	19269.0
not affected by terrain losses	2709362	17552.3
lost to NTSC IX	0	0.0
lost to additional IX by ATV	62147	1099.0
lost to ATV IX only	62147	1099.0
lost to all IX	62147	1099.0

Potential Interfering Stations Included in above Scenario 18

50A OH AKRON	BLEDT	20040928AQT	LIC
50A PA ERIE	BMPEDT	20000412AAR	APP
50A WV OAK HILL	BLCDDT	20070426AAK	LIC

Figure 3

51A PA PITTSBURGH                    DTVPLN        DTVP1809        PLN

After Analysis

Results for: 50A PA GREENSBURG                    BLCDDT        20030409ABC   LIC

HAAT 264.0 m, ATV ERP 362.0 kW

	POPULATION	AREA (sq km)
within Noise Limited Contour	2831860	19269.0
not affected by terrain losses	2709362	17552.3
lost to NTSC IX	0	0.0
lost to additional IX by ATV	62211	1103.0
lost to ATV IX only	62211	1103.0
lost to all IX	62211	1103.0

Potential Interfering Stations Included in above Scenario    18

50A OH AKRON	BLEDT	20040928AQT	LIC
50A PA ERIE	BMPEDT	20000412AAR	APP
50A WV OAK HILL	BLCDDT	20070426AAK	LIC
51A PA PITTSBURGH	DTVPLN	DTV1809	PLN
50A DC WASHINGTON	USERRECORD01		APP

Percent new IX =        0.0024%

Result key:                51

Scenario                19    Affected station                8

Before Analysis

Results for: 50A PA GREENSBURG                    BLCDDT        20030409ABC   LIC

HAAT 264.0 m, ATV ERP 362.0 kW

	POPULATION	AREA (sq km)
within Noise Limited Contour	2831860	19269.0
not affected by terrain losses	2709362	17552.3
lost to NTSC IX	0	0.0
lost to additional IX by ATV	62625	1119.1
lost to ATV IX only	62625	1119.1
lost to all IX	62625	1119.1

Potential Interfering Stations Included in above Scenario    19

50A OH AKRON	BLEDT	20040928AQT	LIC
50A PA ERIE	BMPEDT	20000412AAR	APP
50A WV OAK HILL	DTVPLN	DTV1784	PLN
51A PA PITTSBURGH	BLCDDT	20041014AEY	LIC

After Analysis

Results for: 50A PA GREENSBURG                    BLCDDT        20030409ABC   LIC

HAAT 264.0 m, ATV ERP 362.0 kW

	POPULATION	AREA (sq km)
within Noise Limited Contour	2831860	19269.0
not affected by terrain losses	2709362	17552.3
lost to NTSC IX	0	0.0
lost to additional IX by ATV	62689	1123.1
lost to ATV IX only	62689	1123.1
lost to all IX	62689	1123.1

Figure 3

Potential Interfering Stations Included in above Scenario    19

50A OH AKRON	BLEDT	20040928AQT	LIC
50A PA ERIE	BMPEDT	20000412AAR	APP
50A WV OAK HILL	DTVPLN	DTV1784	PLN
51A PA PITTSBURGH	BLCDDT	20041014AEY	LIC
50A DC WASHINGTON	USERRECORD01		APP

Percent new IX =        0.0024%

Result key:                52

Scenario                20    Affected station                8

Before Analysis

Results for: 50A PA GREENSBURG                    BLCDDT        20030409ABC   LIC

HAAT 264.0 m, ATV ERP 362.0 kW

	POPULATION	AREA (sq km)
within Noise Limited Contour	2831860	19269.0
not affected by terrain losses	2709362	17552.3
lost to NTSC IX	0	0.0
lost to additional IX by ATV	62625	1119.1
lost to ATV IX only	62625	1119.1
lost to all IX	62625	1119.1

Potential Interfering Stations Included in above Scenario    20

50A OH AKRON	BLEDT	20040928AQT	LIC
50A PA ERIE	BMPEDT	20000412AAR	APP
50A WV OAK HILL	DTVPLN	DTV1784	PLN
51A PA PITTSBURGH	DTVPLN	DTV1809	PLN

After Analysis

Results for: 50A PA GREENSBURG                    BLCDDT        20030409ABC   LIC

HAAT 264.0 m, ATV ERP 362.0 kW

	POPULATION	AREA (sq km)
within Noise Limited Contour	2831860	19269.0
not affected by terrain losses	2709362	17552.3
lost to NTSC IX	0	0.0
lost to additional IX by ATV	62689	1123.1
lost to ATV IX only	62689	1123.1
lost to all IX	62689	1123.1

Potential Interfering Stations Included in above Scenario    20

50A OH AKRON	BLEDT	20040928AQT	LIC
50A PA ERIE	BMPEDT	20000412AAR	APP
50A WV OAK HILL	DTVPLN	DTV1784	PLN
51A PA PITTSBURGH	DTVPLN	DTV1809	PLN
50A DC WASHINGTON	USERRECORD01		APP

Percent new IX =        0.0024%

Result key:                53

Scenario                21    Affected station                8

Before Analysis

Figure 3

Results for: 50A PA GREENSBURG BLCDT 20030409ABC LIC  
HAAT 264.0 m, ATV ERP 362.0 kW

	POPULATION	AREA (sq km)
within Noise Limited Contour	2831860	19269.0
not affected by terrain losses	2709362	17552.3
lost to NTSC IX	0	0.0
lost to additional IX by ATV	62147	1099.0
lost to ATV IX only	62147	1099.0
lost to all IX	62147	1099.0

Potential Interfering Stations Included in above Scenario 21

50A OH AKRON	DTVPLN	DTVP1772	PLN
50A PA ERIE	BMPEDT	20000412AAR	APP
50A WV OAK HILL	BLCDT	20070426AAK	LIC
51A PA PITTSBURGH	BLCDT	20041014AEY	LIC

After Analysis

Results for: 50A PA GREENSBURG BLCDT 20030409ABC LIC  
HAAT 264.0 m, ATV ERP 362.0 kW

	POPULATION	AREA (sq km)
within Noise Limited Contour	2831860	19269.0
not affected by terrain losses	2709362	17552.3
lost to NTSC IX	0	0.0
lost to additional IX by ATV	62211	1103.0
lost to ATV IX only	62211	1103.0
lost to all IX	62211	1103.0

Potential Interfering Stations Included in above Scenario 21

50A OH AKRON	DTVPLN	DTVP1772	PLN
50A PA ERIE	BMPEDT	20000412AAR	APP
50A WV OAK HILL	BLCDT	20070426AAK	LIC
51A PA PITTSBURGH	BLCDT	20041014AEY	LIC
50A DC WASHINGTON	USERRECORD01		APP

Percent new IX = 0.0024%

Result key: 54  
Scenario 22 Affected station 8  
Before Analysis

Results for: 50A PA GREENSBURG BLCDT 20030409ABC LIC  
HAAT 264.0 m, ATV ERP 362.0 kW

	POPULATION	AREA (sq km)
within Noise Limited Contour	2831860	19269.0
not affected by terrain losses	2709362	17552.3
lost to NTSC IX	0	0.0
lost to additional IX by ATV	62147	1099.0
lost to ATV IX only	62147	1099.0
lost to all IX	62147	1099.0

Potential Interfering Stations Included in above Scenario 22

50A OH AKRON	DTVPLN	DTVP1772	PLN
50A PA ERIE	BMPEDT	20000412AAR	APP

Figure 3

50A WV OAK HILL BLCDT 20070426AAK LIC  
51A PA PITTSBURGH DTVPLN DTVP1809 PLN

After Analysis

Results for: 50A PA GREENSBURG BLCDT 20030409ABC LIC  
HAAT 264.0 m, ATV ERP 362.0 kW

	POPULATION	AREA (sq km)
within Noise Limited Contour	2831860	19269.0
not affected by terrain losses	2709362	17552.3
lost to NTSC IX	0	0.0
lost to additional IX by ATV	62211	1103.0
lost to ATV IX only	62211	1103.0
lost to all IX	62211	1103.0

Potential Interfering Stations Included in above Scenario 22

50A OH AKRON	DTVPLN	DTVP1772	PLN
50A PA ERIE	BMPEDT	20000412AAR	APP
50A WV OAK HILL	BLCDT	20070426AAK	LIC
51A PA PITTSBURGH	DTVPLN	DTVP1809	PLN
50A DC WASHINGTON	USERRECORD01		APP

Percent new IX = 0.0024%

Result key: 55  
Scenario 23 Affected station 8  
Before Analysis

Results for: 50A PA GREENSBURG BLCDT 20030409ABC LIC  
HAAT 264.0 m, ATV ERP 362.0 kW

	POPULATION	AREA (sq km)
within Noise Limited Contour	2831860	19269.0
not affected by terrain losses	2709362	17552.3
lost to NTSC IX	0	0.0
lost to additional IX by ATV	62625	1119.1
lost to ATV IX only	62625	1119.1
lost to all IX	62625	1119.1

Potential Interfering Stations Included in above Scenario 23

50A OH AKRON	DTVPLN	DTVP1772	PLN
50A PA ERIE	BMPEDT	20000412AAR	APP
50A WV OAK HILL	DTVPLN	DTVP1784	PLN
51A PA PITTSBURGH	BLCDT	20041014AEY	LIC

After Analysis

Results for: 50A PA GREENSBURG BLCDT 20030409ABC LIC  
HAAT 264.0 m, ATV ERP 362.0 kW

	POPULATION	AREA (sq km)
within Noise Limited Contour	2831860	19269.0
not affected by terrain losses	2709362	17552.3
lost to NTSC IX	0	0.0
lost to additional IX by ATV	62689	1123.1
lost to ATV IX only	62689	1123.1
lost to all IX	62689	1123.1

Figure 3

Potential Interfering Stations Included in above Scenario 23

50A OH AKRON	DTVPLN	DTVP1772	PLN
50A PA ERIE	BMPEDT	20000412AAR	APP
50A WV OAK HILL	DTVPLN	DTVP1784	PLN
51A PA PITTSBURGH	BLCDT	20041014AEY	LIC
50A DC WASHINGTON	USERRECORD01		APP

Percent new IX = 0.0024%

Result key: 56

Scenario 24 Affected station 8  
Before Analysis

Results for: 50A PA GREENSBURG BLCDT 20030409ABC LIC  
HAAT 264.0 m, ATV ERP 362.0 kW

	POPULATION	AREA (sq km)
within Noise Limited Contour	2831860	19269.0
not affected by terrain losses	2709362	17552.3
lost to NTSC IX	0	0.0
lost to additional IX by ATV	62625	1119.1
lost to ATV IX only	62625	1119.1
lost to all IX	62625	1119.1

Potential Interfering Stations Included in above Scenario 24

50A OH AKRON	DTVPLN	DTVP1772	PLN
50A PA ERIE	BMPEDT	20000412AAR	APP
50A WV OAK HILL	DTVPLN	DTVP1784	PLN
51A PA PITTSBURGH	DTVPLN	DTVP1809	PLN

After Analysis

Results for: 50A PA GREENSBURG BLCDT 20030409ABC LIC  
HAAT 264.0 m, ATV ERP 362.0 kW

	POPULATION	AREA (sq km)
within Noise Limited Contour	2831860	19269.0
not affected by terrain losses	2709362	17552.3
lost to NTSC IX	0	0.0
lost to additional IX by ATV	62689	1123.1
lost to ATV IX only	62689	1123.1
lost to all IX	62689	1123.1

Potential Interfering Stations Included in above Scenario 24

50A OH AKRON	DTVPLN	DTVP1772	PLN
50A PA ERIE	BMPEDT	20000412AAR	APP
50A WV OAK HILL	DTVPLN	DTVP1784	PLN
51A PA PITTSBURGH	DTVPLN	DTVP1809	PLN
50A DC WASHINGTON	USERRECORD01		APP

Percent new IX = 0.0024%

Worst case new IX 0.0024% Scenario 7

#####

Figure 3

Analysis of Interference to Affected Station 9

Analysis of current record

Channel	Call	City/State	Application	Ref. No.
50	WPCB-TV	GREENSBURG PA	DTVPLN	-DTVP1776

Stations Potentially Affecting This Station

Chan	Call	City/State	Dist(km)	Status	Application	Ref. No.
49	WHSV-TV	HARRISONBURG VA	222.2	LIC	BLCDT	-20060413ACO
49	WHSV-TV	HARRISONBURG VA	222.2	PLN	DTVPLN	-DTVP1755
49	WTAP-TV	PARKERSBURG WV	191.3	LIC	BLCDT	-20040423ABG
49	WTAP-TV	PARKERSBURG WV	191.3	PLN	DTVPLN	-DTVP1757
50	WDCW	WASHINGTON DC	284.3	PLN	DTVPLN	-DTVP1762
50	WEAO	AKRON OH	173.8	LIC	BLEDT	-20040928AQT
50	WEAO	AKRON OH	173.8	PLN	DTVPLN	-DTVP1772
50	WDTN	DAYTON OH	387.9	LIC	BLCDT	-20050629AAL
50	WDTN	DAYTON OH	387.9	PLN	DTVPLN	-DTVP1773
50	WQLN	ERIE PA	184.9	LIC	BLEDT	-20060601BCQ
50	WQLN	ERIE PA	184.9	PLN	DTVPLN	-DTVP1775
50	WQLN	ERIE PA	184.9	APP	BMPEDT	-20000412AAR
50	WOAY-TV	OAK HILL WV	295.3	LIC	BLCDT	-20070426AAK
50	WOAY-TV	OAK HILL WV	295.3	PLN	DTVPLN	-DTVP1784
51	WTAE-TV	PITTSBURGH PA	12.6	LIC	BLCDT	-20041014AEY
51	WTAE-TV	PITTSBURGH PA	12.6	PLN	DTVPLN	-DTVP1809
50	WDCW	WASHINGTON DC	284.3	APP	USERRECORD-01	

Total scenarios = 24

Result key: 57

Scenario 1 Affected station 9  
Before Analysis

Results for: 50A PA GREENSBURG DTVPLN DTVP1776 PLN  
HAAT 264.0 m, ATV ERP 362.0 kW

	POPULATION	AREA (sq km)
within Noise Limited Contour	2831860	19269.0
not affected by terrain losses	2709362	17552.3
lost to NTSC IX	0	0.0
lost to additional IX by ATV	58016	1034.8
lost to ATV IX only	58016	1034.8
lost to all IX	58016	1034.8

Potential Interfering Stations Included in above Scenario 1

50A OH AKRON	BLEDT	20040928AQT	LIC
50A PA ERIE	BLEDT	20060601BCQ	LIC
50A WV OAK HILL	BLCDT	20070426AAK	LIC
51A PA PITTSBURGH	BLCDT	20041014AEY	LIC

After Analysis

Results for: 50A PA GREENSBURG DTVPLN DTVP1776 PLN

Figure 3

HAAT 264.0 m, ATV ERP 362.0 kW

	POPULATION	AREA (sq km)
within Noise Limited Contour	2831860	19269.0
not affected by terrain losses	2709362	17552.3
lost to NTSC IX	0	0.0
lost to additional IX by ATV	58080	1038.9
lost to ATV IX only	58080	1038.9
lost to all IX	58080	1038.9

Potential Interfering Stations Included in above Scenario 1

50A OH AKRON	BLEDT	20040928AQT	LIC
50A PA ERIE	BLEDT	20060601BCQ	LIC
50A WV OAK HILL	BLCDT	20070426AAK	LIC
51A PA PITTSBURGH	BLCDT	20041014AEY	LIC
50A DC WASHINGTON	USERRECORD01		APP

Percent new IX = 0.0024%

Result key: 58  
Scenario 2 Affected station 9  
Before Analysis

Results for: 50A PA GREENSBURG DTVPLN DTVP1776 PLN

HAAT 264.0 m, ATV ERP 362.0 kW

	POPULATION	AREA (sq km)
within Noise Limited Contour	2831860	19269.0
not affected by terrain losses	2709362	17552.3
lost to NTSC IX	0	0.0
lost to additional IX by ATV	58016	1034.8
lost to ATV IX only	58016	1034.8
lost to all IX	58016	1034.8

Potential Interfering Stations Included in above Scenario 2

50A OH AKRON	BLEDT	20040928AQT	LIC
50A PA ERIE	BLEDT	20060601BCQ	LIC
50A WV OAK HILL	BLCDT	20070426AAK	LIC
51A PA PITTSBURGH	DTVPLN	DTVP1809	PLN

After Analysis

Results for: 50A PA GREENSBURG DTVPLN DTVP1776 PLN

HAAT 264.0 m, ATV ERP 362.0 kW

	POPULATION	AREA (sq km)
within Noise Limited Contour	2831860	19269.0
not affected by terrain losses	2709362	17552.3
lost to NTSC IX	0	0.0
lost to additional IX by ATV	58080	1038.9
lost to ATV IX only	58080	1038.9
lost to all IX	58080	1038.9

Potential Interfering Stations Included in above Scenario 2

50A OH AKRON	BLEDT	20040928AQT	LIC
50A PA ERIE	BLEDT	20060601BCQ	LIC
50A WV OAK HILL	BLCDT	20070426AAK	LIC

Figure 3

51A PA PITTSBURGH DTVPLN DTVP1809 PLN  
50A DC WASHINGTON USERRECORD01 APP

Percent new IX = 0.0024%

Result key: 59  
Scenario 3 Affected station 9  
Before Analysis

Results for: 50A PA GREENSBURG DTVPLN DTVP1776 PLN

HAAT 264.0 m, ATV ERP 362.0 kW

	POPULATION	AREA (sq km)
within Noise Limited Contour	2831860	19269.0
not affected by terrain losses	2709362	17552.3
lost to NTSC IX	0	0.0
lost to additional IX by ATV	58494	1054.9
lost to ATV IX only	58494	1054.9
lost to all IX	58494	1054.9

Potential Interfering Stations Included in above Scenario 3

50A OH AKRON	BLEDT	20040928AQT	LIC
50A PA ERIE	BLEDT	20060601BCQ	LIC
50A WV OAK HILL	DTVPLN	DTVP1784	PLN
51A PA PITTSBURGH	BLCDT	20041014AEY	LIC

After Analysis

Results for: 50A PA GREENSBURG DTVPLN DTVP1776 PLN

HAAT 264.0 m, ATV ERP 362.0 kW

	POPULATION	AREA (sq km)
within Noise Limited Contour	2831860	19269.0
not affected by terrain losses	2709362	17552.3
lost to NTSC IX	0	0.0
lost to additional IX by ATV	58558	1058.9
lost to ATV IX only	58558	1058.9
lost to all IX	58558	1058.9

Potential Interfering Stations Included in above Scenario 3

50A OH AKRON	BLEDT	20040928AQT	LIC
50A PA ERIE	BLEDT	20060601BCQ	LIC
50A WV OAK HILL	DTVPLN	DTVP1784	PLN
51A PA PITTSBURGH	BLCDT	20041014AEY	LIC
50A DC WASHINGTON	USERRECORD01		APP

Percent new IX = 0.0024%

Result key: 60  
Scenario 4 Affected station 9  
Before Analysis

Results for: 50A PA GREENSBURG DTVPLN DTVP1776 PLN

HAAT 264.0 m, ATV ERP 362.0 kW

	POPULATION	AREA (sq km)
within Noise Limited Contour	2831860	19269.0
not affected by terrain losses	2709362	17552.3



Figure 3

lost to NTSC IX	0	0.0	
lost to additional IX by ATV	58494	1054.9	
lost to ATV IX only	58494	1054.9	
lost to all IX	58494	1054.9	
Potential Interfering Stations Included in above Scenario 4			
50A OH AKRON	BLEDT	20040928AQT	LIC
50A PA ERIE	BLEDT	20060601BCQ	LIC
50A WV OAK HILL	DTVPLN	DTVP1784	PLN
51A PA PITTSBURGH	DTVPLN	DTVP1809	PLN
After Analysis			
Results for: 50A PA GREENSBURG	DTVPLN	DTVP1776	PLN
HAAT 264.0 m, ATV ERP 362.0 kW			
	POPULATION	AREA (sq km)	
within Noise Limited Contour	2831860	19269.0	
not affected by terrain losses	2709362	17552.3	
lost to NTSC IX	0	0.0	
lost to additional IX by ATV	58558	1058.9	
lost to ATV IX only	58558	1058.9	
lost to all IX	58558	1058.9	
Potential Interfering Stations Included in above Scenario 4			
50A OH AKRON	BLEDT	20040928AQT	LIC
50A PA ERIE	BLEDT	20060601BCQ	LIC
50A WV OAK HILL	DTVPLN	DTVP1784	PLN
51A PA PITTSBURGH	DTVPLN	DTVP1809	PLN
50A DC WASHINGTON	USERRECORD01		APP
Percent new IX = 0.0024%			
Result key: 61			
Scenario 5 Affected station 9			
Before Analysis			
Results for: 50A PA GREENSBURG	DTVPLN	DTVP1776	PLN
HAAT 264.0 m, ATV ERP 362.0 kW			
	POPULATION	AREA (sq km)	
within Noise Limited Contour	2831860	19269.0	
not affected by terrain losses	2709362	17552.3	
lost to NTSC IX	0	0.0	
lost to additional IX by ATV	62147	1099.0	
lost to ATV IX only	62147	1099.0	
lost to all IX	62147	1099.0	
Potential Interfering Stations Included in above Scenario 5			
50A OH AKRON	BLEDT	20040928AQT	LIC
50A PA ERIE	DTVPLN	DTVP1775	PLN
50A WV OAK HILL	BLCDT	20070426AAK	LIC
51A PA PITTSBURGH	BLCDT	20041014AEY	LIC
After Analysis			

Figure 3

Results for: 50A PA GREENSBURG	DTVPLN	DTVP1776	PLN
HAAT 264.0 m, ATV ERP 362.0 kW			
	POPULATION	AREA (sq km)	
within Noise Limited Contour	2831860	19269.0	
not affected by terrain losses	2709362	17552.3	
lost to NTSC IX	0	0.0	
lost to additional IX by ATV	62211	1103.0	
lost to ATV IX only	62211	1103.0	
lost to all IX	62211	1103.0	
Potential Interfering Stations Included in above Scenario 5			
50A OH AKRON	BLEDT	20040928AQT	LIC
50A PA ERIE	DTVPLN	DTVP1775	PLN
50A WV OAK HILL	BLCDT	20070426AAK	LIC
51A PA PITTSBURGH	BLCDT	20041014AEY	LIC
50A DC WASHINGTON	USERRECORD01		APP
Percent new IX = 0.0024%			
Result key: 62			
Scenario 6 Affected station 9			
Before Analysis			
Results for: 50A PA GREENSBURG	DTVPLN	DTVP1776	PLN
HAAT 264.0 m, ATV ERP 362.0 kW			
	POPULATION	AREA (sq km)	
within Noise Limited Contour	2831860	19269.0	
not affected by terrain losses	2709362	17552.3	
lost to NTSC IX	0	0.0	
lost to additional IX by ATV	62147	1099.0	
lost to ATV IX only	62147	1099.0	
lost to all IX	62147	1099.0	
Potential Interfering Stations Included in above Scenario 6			
50A OH AKRON	BLEDT	20040928AQT	LIC
50A PA ERIE	DTVPLN	DTVP1775	PLN
50A WV OAK HILL	BLCDT	20070426AAK	LIC
51A PA PITTSBURGH	DTVPLN	DTVP1809	PLN
After Analysis			
Results for: 50A PA GREENSBURG	DTVPLN	DTVP1776	PLN
HAAT 264.0 m, ATV ERP 362.0 kW			
	POPULATION	AREA (sq km)	
within Noise Limited Contour	2831860	19269.0	
not affected by terrain losses	2709362	17552.3	
lost to NTSC IX	0	0.0	
lost to additional IX by ATV	62211	1103.0	
lost to ATV IX only	62211	1103.0	
lost to all IX	62211	1103.0	
Potential Interfering Stations Included in above Scenario 6			
50A OH AKRON	BLEDT	20040928AQT	LIC
50A PA ERIE	DTVPLN	DTVP1775	PLN

Figure 3

50A WV OAK HILL	BLCDT	20070426AAK	LIC
51A PA PITTSBURGH	DTVPLN	DTVP1809	PLN
50A DC WASHINGTON	USERRECORD01		APP

Percent new IX = 0.0024%

Result key: 63  
 Scenario 7 Affected station 9  
 Before Analysis

Results for: 50A PA GREENSBURG DTVPLN DTVP1776 PLN  
 HAAT 264.0 m, ATV ERP 362.0 kW

	POPULATION	AREA (sq km)
within Noise Limited Contour	2831860	19269.0
not affected by terrain losses	2709362	17552.3
lost to NTSC IX	0	0.0
lost to additional IX by ATV	62625	1119.1
lost to ATV IX only	62625	1119.1
lost to all IX	62625	1119.1

Potential Interfering Stations Included in above Scenario 7

50A OH AKRON	BLEDT	20040928AQT	LIC
50A PA ERIE	DTVPLN	DTVP1775	PLN
50A WV OAK HILL	DTVPLN	DTVP1784	PLN
51A PA PITTSBURGH	BLCDT	20041014AEY	LIC

After Analysis

Results for: 50A PA GREENSBURG DTVPLN DTVP1776 PLN  
 HAAT 264.0 m, ATV ERP 362.0 kW

	POPULATION	AREA (sq km)
within Noise Limited Contour	2831860	19269.0
not affected by terrain losses	2709362	17552.3
lost to NTSC IX	0	0.0
lost to additional IX by ATV	62689	1123.1
lost to ATV IX only	62689	1123.1
lost to all IX	62689	1123.1

Potential Interfering Stations Included in above Scenario 7

50A OH AKRON	BLEDT	20040928AQT	LIC
50A PA ERIE	DTVPLN	DTVP1775	PLN
50A WV OAK HILL	DTVPLN	DTVP1784	PLN
51A PA PITTSBURGH	BLCDT	20041014AEY	LIC
50A DC WASHINGTON	USERRECORD01		APP

Percent new IX = 0.0024%

Result key: 64  
 Scenario 8 Affected station 9  
 Before Analysis

Results for: 50A PA GREENSBURG DTVPLN DTVP1776 PLN  
 HAAT 264.0 m, ATV ERP 362.0 kW

	POPULATION	AREA (sq km)
within Noise Limited Contour	2831860	19269.0

Figure 3

not affected by terrain losses	2709362	17552.3
lost to NTSC IX	0	0.0
lost to additional IX by ATV	62625	1119.1
lost to ATV IX only	62625	1119.1
lost to all IX	62625	1119.1

Potential Interfering Stations Included in above Scenario 8

50A OH AKRON	BLEDT	20040928AQT	LIC
50A PA ERIE	DTVPLN	DTVP1775	PLN
50A WV OAK HILL	DTVPLN	DTVP1784	PLN
51A PA PITTSBURGH	DTVPLN	DTVP1809	PLN

After Analysis

Results for: 50A PA GREENSBURG DTVPLN DTVP1776 PLN  
 HAAT 264.0 m, ATV ERP 362.0 kW

	POPULATION	AREA (sq km)
within Noise Limited Contour	2831860	19269.0
not affected by terrain losses	2709362	17552.3
lost to NTSC IX	0	0.0
lost to additional IX by ATV	62689	1123.1
lost to ATV IX only	62689	1123.1
lost to all IX	62689	1123.1

Potential Interfering Stations Included in above Scenario 8

50A OH AKRON	BLEDT	20040928AQT	LIC
50A PA ERIE	DTVPLN	DTVP1775	PLN
50A WV OAK HILL	DTVPLN	DTVP1784	PLN
51A PA PITTSBURGH	DTVPLN	DTVP1809	PLN
50A DC WASHINGTON	USERRECORD01		APP

Percent new IX = 0.0024%

Result key: 65  
 Scenario 9 Affected station 9  
 Before Analysis

Results for: 50A PA GREENSBURG DTVPLN DTVP1776 PLN  
 HAAT 264.0 m, ATV ERP 362.0 kW

	POPULATION	AREA (sq km)
within Noise Limited Contour	2831860	19269.0
not affected by terrain losses	2709362	17552.3
lost to NTSC IX	0	0.0
lost to additional IX by ATV	58016	1034.8
lost to ATV IX only	58016	1034.8
lost to all IX	58016	1034.8

Potential Interfering Stations Included in above Scenario 9

50A OH AKRON	DTVPLN	DTVP1772	PLN
50A PA ERIE	BLEDT	20060601BCQ	LIC
50A WV OAK HILL	BLCDT	20070426AAK	LIC
51A PA PITTSBURGH	BLCDT	20041014AEY	LIC

After Analysis

Figure 3

Results for: 50A PA GREENSBURG                      DTVPLN      DTVP1776      PLN  
 HAAT 264.0 m, ATV ERP 362.0 kW

	POPULATION	AREA (sq km)
within Noise Limited Contour	2831860	19269.0
not affected by terrain losses	2709362	17552.3
lost to NTSC IX	0	0.0
lost to additional IX by ATV	58080	1038.9
lost to ATV IX only	58080	1038.9
lost to all IX	58080	1038.9

Potential Interfering Stations Included in above Scenario 9

	DTVPLN	DTVP1772	PLN
50A OH AKRON	DTVPLN	DTVP1772	PLN
50A PA ERIE	BLEDT	20060601BCQ	LIC
50A WV OAK HILL	BLCDT	20070426AAK	LIC
51A PA PITTSBURGH	BLCDT	20041014AEY	LIC
50A DC WASHINGTON	USERRECORD01		APP

Percent new IX = 0.0024%

Result key: 66  
 Scenario 10 Affected station 9  
 Before Analysis

Results for: 50A PA GREENSBURG                      DTVPLN      DTVP1776      PLN  
 HAAT 264.0 m, ATV ERP 362.0 kW

	POPULATION	AREA (sq km)
within Noise Limited Contour	2831860	19269.0
not affected by terrain losses	2709362	17552.3
lost to NTSC IX	0	0.0
lost to additional IX by ATV	58016	1034.8
lost to ATV IX only	58016	1034.8
lost to all IX	58016	1034.8

Potential Interfering Stations Included in above Scenario 10

	DTVPLN	DTVP1772	PLN
50A OH AKRON	DTVPLN	DTVP1772	PLN
50A PA ERIE	BLEDT	20060601BCQ	LIC
50A WV OAK HILL	BLCDT	20070426AAK	LIC
51A PA PITTSBURGH	DTVPLN	DTVP1809	PLN

After Analysis

Results for: 50A PA GREENSBURG                      DTVPLN      DTVP1776      PLN  
 HAAT 264.0 m, ATV ERP 362.0 kW

	POPULATION	AREA (sq km)
within Noise Limited Contour	2831860	19269.0
not affected by terrain losses	2709362	17552.3
lost to NTSC IX	0	0.0
lost to additional IX by ATV	58080	1038.9
lost to ATV IX only	58080	1038.9
lost to all IX	58080	1038.9

Potential Interfering Stations Included in above Scenario 10

	DTVPLN	DTVP1772	PLN
50A OH AKRON	DTVPLN	DTVP1772	PLN

Figure 3

50A PA ERIE	BLEDT	20060601BCQ	LIC
50A WV OAK HILL	BLCDT	20070426AAK	LIC
51A PA PITTSBURGH	DTVPLN	DTVP1809	PLN
50A DC WASHINGTON	USERRECORD01		APP

Percent new IX = 0.0024%

Result key: 67  
 Scenario 11 Affected station 9  
 Before Analysis

Results for: 50A PA GREENSBURG                      DTVPLN      DTVP1776      PLN  
 HAAT 264.0 m, ATV ERP 362.0 kW

	POPULATION	AREA (sq km)
within Noise Limited Contour	2831860	19269.0
not affected by terrain losses	2709362	17552.3
lost to NTSC IX	0	0.0
lost to additional IX by ATV	58494	1054.9
lost to ATV IX only	58494	1054.9
lost to all IX	58494	1054.9

Potential Interfering Stations Included in above Scenario 11

	DTVPLN	DTVP1772	PLN
50A OH AKRON	DTVPLN	DTVP1772	PLN
50A PA ERIE	BLEDT	20060601BCQ	LIC
50A WV OAK HILL	DTVPLN	DTVP1784	PLN
51A PA PITTSBURGH	BLCDT	20041014AEY	LIC

After Analysis

Results for: 50A PA GREENSBURG                      DTVPLN      DTVP1776      PLN  
 HAAT 264.0 m, ATV ERP 362.0 kW

	POPULATION	AREA (sq km)
within Noise Limited Contour	2831860	19269.0
not affected by terrain losses	2709362	17552.3
lost to NTSC IX	0	0.0
lost to additional IX by ATV	58558	1058.9
lost to ATV IX only	58558	1058.9
lost to all IX	58558	1058.9

Potential Interfering Stations Included in above Scenario 11

50A OH AKRON	DTVPLN	DTVP1772	PLN
50A PA ERIE	BLEDT	20060601BCQ	LIC
50A WV OAK HILL	DTVPLN	DTVP1784	PLN
51A PA PITTSBURGH	BLCDT	20041014AEY	LIC
50A DC WASHINGTON	USERRECORD01		APP

Percent new IX = 0.0024%

Result key: 68  
 Scenario 12 Affected station 9  
 Before Analysis

Results for: 50A PA GREENSBURG                      DTVPLN      DTVP1776      PLN  
 HAAT 264.0 m, ATV ERP 362.0 kW

	POPULATION	AREA (sq km)
--	------------	--------------

Figure 3

within Noise Limited Contour	2831860	19269.0	
not affected by terrain losses	2709362	17552.3	
lost to NTSC IX	0	0.0	
lost to additional IX by ATV	58494	1054.9	
lost to ATV IX only	58494	1054.9	
lost to all IX	58494	1054.9	
Potential Interfering Stations Included in above Scenario	12		
50A OH AKRON	DTVPLN	DTVP1772	PLN
50A PA ERIE	BLEDT	20060601BCQ	LIC
50A WV OAK HILL	DTVPLN	DTVP1784	PLN
51A PA PITTSBURGH	DTVPLN	DTVP1809	PLN
After Analysis			
Results for: 50A PA GREENSBURG	DTVPLN	DTVP1776	PLN
HAAT 264.0 m, ATV ERP 362.0 kW			
	POPULATION	AREA (sq km)	
within Noise Limited Contour	2831860	19269.0	
not affected by terrain losses	2709362	17552.3	
lost to NTSC IX	0	0.0	
lost to additional IX by ATV	58558	1058.9	
lost to ATV IX only	58558	1058.9	
lost to all IX	58558	1058.9	
Potential Interfering Stations Included in above Scenario	12		
50A OH AKRON	DTVPLN	DTVP1772	PLN
50A PA ERIE	BLEDT	20060601BCQ	LIC
50A WV OAK HILL	DTVPLN	DTVP1784	PLN
51A PA PITTSBURGH	DTVPLN	DTVP1809	PLN
50A DC WASHINGTON	USERRECORD01	APP	
Percent new IX =	0.0024%		
Result key:	69		
Scenario	13	Affected station	9
Before Analysis			
Results for: 50A PA GREENSBURG	DTVPLN	DTVP1776	PLN
HAAT 264.0 m, ATV ERP 362.0 kW			
	POPULATION	AREA (sq km)	
within Noise Limited Contour	2831860	19269.0	
not affected by terrain losses	2709362	17552.3	
lost to NTSC IX	0	0.0	
lost to additional IX by ATV	62147	1099.0	
lost to ATV IX only	62147	1099.0	
lost to all IX	62147	1099.0	
Potential Interfering Stations Included in above Scenario	13		
50A OH AKRON	DTVPLN	DTVP1772	PLN
50A PA ERIE	DTVPLN	DTVP1775	PLN
50A WV OAK HILL	BLCDT	20070426AAK	LIC
51A PA PITTSBURGH	BLCDT	20041014AEY	LIC

Figure 3

After Analysis			
Results for: 50A PA GREENSBURG	DTVPLN	DTVP1776	PLN
HAAT 264.0 m, ATV ERP 362.0 kW			
	POPULATION	AREA (sq km)	
within Noise Limited Contour	2831860	19269.0	
not affected by terrain losses	2709362	17552.3	
lost to NTSC IX	0	0.0	
lost to additional IX by ATV	62211	1103.0	
lost to ATV IX only	62211	1103.0	
lost to all IX	62211	1103.0	
Potential Interfering Stations Included in above Scenario	13		
50A OH AKRON	DTVPLN	DTVP1772	PLN
50A PA ERIE	DTVPLN	DTVP1775	PLN
50A WV OAK HILL	BLCDT	20070426AAK	LIC
51A PA PITTSBURGH	BLCDT	20041014AEY	LIC
50A DC WASHINGTON	USERRECORD01	APP	
Percent new IX =	0.0024%		
Result key:	70		
Scenario	14	Affected station	9
Before Analysis			
Results for: 50A PA GREENSBURG	DTVPLN	DTVP1776	PLN
HAAT 264.0 m, ATV ERP 362.0 kW			
	POPULATION	AREA (sq km)	
within Noise Limited Contour	2831860	19269.0	
not affected by terrain losses	2709362	17552.3	
lost to NTSC IX	0	0.0	
lost to additional IX by ATV	62147	1099.0	
lost to ATV IX only	62147	1099.0	
lost to all IX	62147	1099.0	
Potential Interfering Stations Included in above Scenario	14		
50A OH AKRON	DTVPLN	DTVP1772	PLN
50A PA ERIE	DTVPLN	DTVP1775	PLN
50A WV OAK HILL	BLCDT	20070426AAK	LIC
51A PA PITTSBURGH	DTVPLN	DTVP1809	PLN
After Analysis			
Results for: 50A PA GREENSBURG	DTVPLN	DTVP1776	PLN
HAAT 264.0 m, ATV ERP 362.0 kW			
	POPULATION	AREA (sq km)	
within Noise Limited Contour	2831860	19269.0	
not affected by terrain losses	2709362	17552.3	
lost to NTSC IX	0	0.0	
lost to additional IX by ATV	62211	1103.0	
lost to ATV IX only	62211	1103.0	
lost to all IX	62211	1103.0	
Potential Interfering Stations Included in above Scenario	14		

Figure 3

50A OH AKRON	DTVPLN	DTVP1772	PLN
50A PA ERIE	DTVPLN	DTVP1775	PLN
50A WV OAK HILL	BLCDT	20070426AAK	LIC
51A PA PITTSBURGH	DTVPLN	DTVP1809	PLN
50A DC WASHINGTON	USERRECORD01		APP

Percent new IX = 0.0024%

Result key: 71  
 Scenario 15 Affected station 9  
 Before Analysis

Results for: 50A PA GREENSBURG DTVPLN DTVP1776 PLN  
 HAAT 264.0 m, ATV ERP 362.0 kW

	POPULATION	AREA (sq km)
within Noise Limited Contour	2831860	19269.0
not affected by terrain losses	2709362	17552.3
lost to NTSC IX	0	0.0
lost to additional IX by ATV	62625	1119.1
lost to ATV IX only	62625	1119.1
lost to all IX	62625	1119.1

Potential Interfering Stations Included in above Scenario 15

50A OH AKRON	DTVPLN	DTVP1772	PLN
50A PA ERIE	DTVPLN	DTVP1775	PLN
50A WV OAK HILL	DTVPLN	DTVP1784	PLN
51A PA PITTSBURGH	BLCDT	20041014AEY	LIC

After Analysis

Results for: 50A PA GREENSBURG DTVPLN DTVP1776 PLN  
 HAAT 264.0 m, ATV ERP 362.0 kW

	POPULATION	AREA (sq km)
within Noise Limited Contour	2831860	19269.0
not affected by terrain losses	2709362	17552.3
lost to NTSC IX	0	0.0
lost to additional IX by ATV	62689	1123.1
lost to ATV IX only	62689	1123.1
lost to all IX	62689	1123.1

Potential Interfering Stations Included in above Scenario 15

50A OH AKRON	DTVPLN	DTVP1772	PLN
50A PA ERIE	DTVPLN	DTVP1775	PLN
50A WV OAK HILL	DTVPLN	DTVP1784	PLN
51A PA PITTSBURGH	BLCDT	20041014AEY	LIC
50A DC WASHINGTON	USERRECORD01		APP

Percent new IX = 0.0024%

Result key: 72  
 Scenario 16 Affected station 9  
 Before Analysis

Results for: 50A PA GREENSBURG DTVPLN DTVP1776 PLN  
 HAAT 264.0 m, ATV ERP 362.0 kW

Figure 3

	POPULATION	AREA (sq km)
within Noise Limited Contour	2831860	19269.0
not affected by terrain losses	2709362	17552.3
lost to NTSC IX	0	0.0
lost to additional IX by ATV	62625	1119.1
lost to ATV IX only	62625	1119.1
lost to all IX	62625	1119.1

Potential Interfering Stations Included in above Scenario 16

50A OH AKRON	DTVPLN	DTVP1772	PLN
50A PA ERIE	DTVPLN	DTVP1775	PLN
50A WV OAK HILL	DTVPLN	DTVP1784	PLN
51A PA PITTSBURGH	DTVPLN	DTVP1809	PLN

After Analysis

Results for: 50A PA GREENSBURG DTVPLN DTVP1776 PLN  
 HAAT 264.0 m, ATV ERP 362.0 kW

	POPULATION	AREA (sq km)
within Noise Limited Contour	2831860	19269.0
not affected by terrain losses	2709362	17552.3
lost to NTSC IX	0	0.0
lost to additional IX by ATV	62689	1123.1
lost to ATV IX only	62689	1123.1
lost to all IX	62689	1123.1

Potential Interfering Stations Included in above Scenario 16

50A OH AKRON	DTVPLN	DTVP1772	PLN
50A PA ERIE	DTVPLN	DTVP1775	PLN
50A WV OAK HILL	DTVPLN	DTVP1784	PLN
51A PA PITTSBURGH	DTVPLN	DTVP1809	PLN
50A DC WASHINGTON	USERRECORD01		APP

Percent new IX = 0.0024%

Result key: 73  
 Scenario 17 Affected station 9  
 Before Analysis

Results for: 50A PA GREENSBURG DTVPLN DTVP1776 PLN  
 HAAT 264.0 m, ATV ERP 362.0 kW

	POPULATION	AREA (sq km)
within Noise Limited Contour	2831860	19269.0
not affected by terrain losses	2709362	17552.3
lost to NTSC IX	0	0.0
lost to additional IX by ATV	62147	1099.0
lost to ATV IX only	62147	1099.0
lost to all IX	62147	1099.0

Potential Interfering Stations Included in above Scenario 17

50A OH AKRON	BLEDT	20040928AQT	LIC
50A PA ERIE	BMPEDT	20000412AAR	APP
50A WV OAK HILL	BLCDT	20070426AAK	LIC
51A PA PITTSBURGH	BLCDT	20041014AEY	LIC

Figure 3

## After Analysis

Results for: 50A PA GREENSBURG      DTVPLN      DTVP1776      PLN  
 HAAT 264.0 m, ATV ERP 362.0 kW

	POPULATION	AREA (sq km)
within Noise Limited Contour	2831860	19269.0
not affected by terrain losses	2709362	17552.3
lost to NTSC IX	0	0.0
lost to additional IX by ATV	62211	1103.0
lost to ATV IX only	62211	1103.0
lost to all IX	62211	1103.0

Potential Interfering Stations Included in above Scenario 17

50A OH AKRON	BLEDT	20040928AQT	LIC
50A PA ERIE	BMPEDT	20000412AAR	APP
50A WV OAK HILL	BLCDDT	20070426AAK	LIC
51A PA PITTSBURGH	BLCDDT	20041014AEY	LIC
50A DC WASHINGTON	USERRECORD01		APP

Percent new IX = 0.0024%

Result key: 74  
 Scenario 18 Affected station 9  
 Before Analysis

Results for: 50A PA GREENSBURG      DTVPLN      DTVP1776      PLN  
 HAAT 264.0 m, ATV ERP 362.0 kW

	POPULATION	AREA (sq km)
within Noise Limited Contour	2831860	19269.0
not affected by terrain losses	2709362	17552.3
lost to NTSC IX	0	0.0
lost to additional IX by ATV	62147	1099.0
lost to ATV IX only	62147	1099.0
lost to all IX	62147	1099.0

Potential Interfering Stations Included in above Scenario 18

50A OH AKRON	BLEDT	20040928AQT	LIC
50A PA ERIE	BMPEDT	20000412AAR	APP
50A WV OAK HILL	BLCDDT	20070426AAK	LIC
51A PA PITTSBURGH	DTVPLN	DTV1809	PLN

## After Analysis

Results for: 50A PA GREENSBURG      DTVPLN      DTVP1776      PLN  
 HAAT 264.0 m, ATV ERP 362.0 kW

	POPULATION	AREA (sq km)
within Noise Limited Contour	2831860	19269.0
not affected by terrain losses	2709362	17552.3
lost to NTSC IX	0	0.0
lost to additional IX by ATV	62211	1103.0
lost to ATV IX only	62211	1103.0
lost to all IX	62211	1103.0

Potential Interfering Stations Included in above Scenario 18

Figure 3

50A OH AKRON	BLEDT	20040928AQT	LIC
50A PA ERIE	BMPEDT	20000412AAR	APP
50A WV OAK HILL	BLCDDT	20070426AAK	LIC
51A PA PITTSBURGH	DTVPLN	DTV1809	PLN
50A DC WASHINGTON	USERRECORD01		APP

Percent new IX = 0.0024%

Result key: 75  
 Scenario 19 Affected station 9  
 Before Analysis

Results for: 50A PA GREENSBURG      DTVPLN      DTVP1776      PLN  
 HAAT 264.0 m, ATV ERP 362.0 kW

	POPULATION	AREA (sq km)
within Noise Limited Contour	2831860	19269.0
not affected by terrain losses	2709362	17552.3
lost to NTSC IX	0	0.0
lost to additional IX by ATV	62625	1119.1
lost to ATV IX only	62625	1119.1
lost to all IX	62625	1119.1

Potential Interfering Stations Included in above Scenario 19

50A OH AKRON	BLEDT	20040928AQT	LIC
50A PA ERIE	BMPEDT	20000412AAR	APP
50A WV OAK HILL	DTVPLN	DTV1784	PLN
51A PA PITTSBURGH	BLCDDT	20041014AEY	LIC

## After Analysis

Results for: 50A PA GREENSBURG      DTVPLN      DTVP1776      PLN  
 HAAT 264.0 m, ATV ERP 362.0 kW

	POPULATION	AREA (sq km)
within Noise Limited Contour	2831860	19269.0
not affected by terrain losses	2709362	17552.3
lost to NTSC IX	0	0.0
lost to additional IX by ATV	62689	1123.1
lost to ATV IX only	62689	1123.1
lost to all IX	62689	1123.1

Potential Interfering Stations Included in above Scenario 19

50A OH AKRON	BLEDT	20040928AQT	LIC
50A PA ERIE	BMPEDT	20000412AAR	APP
50A WV OAK HILL	DTVPLN	DTV1784	PLN
51A PA PITTSBURGH	BLCDDT	20041014AEY	LIC
50A DC WASHINGTON	USERRECORD01		APP

Percent new IX = 0.0024%

Result key: 76  
 Scenario 20 Affected station 9  
 Before Analysis

Results for: 50A PA GREENSBURG      DTVPLN      DTVP1776      PLN

Figure 3

HAAT 264.0 m, ATV ERP 362.0 kW			
	POPULATION	AREA (sq km)	
within Noise Limited Contour	2831860	19269.0	
not affected by terrain losses	2709362	17552.3	
lost to NTSC IX	0	0.0	
lost to additional IX by ATV	62625	1119.1	
lost to ATV IX only	62625	1119.1	
lost to all IX	62625	1119.1	
Potential Interfering Stations Included in above Scenario	20		
50A OH AKRON	BLEDT	20040928AQT	LIC
50A PA ERIE	BMPEDT	20000412AAR	APP
50A WV OAK HILL	DTVPLN	DTVP1784	PLN
51A PA PITTSBURGH	DTVPLN	DTVP1809	PLN
After Analysis			
Results for: 50A PA GREENSBURG	DTVPLN	DTVP1776	PLN
HAAT 264.0 m, ATV ERP 362.0 kW			
	POPULATION	AREA (sq km)	
within Noise Limited Contour	2831860	19269.0	
not affected by terrain losses	2709362	17552.3	
lost to NTSC IX	0	0.0	
lost to additional IX by ATV	62689	1123.1	
lost to ATV IX only	62689	1123.1	
lost to all IX	62689	1123.1	
Potential Interfering Stations Included in above Scenario	20		
50A OH AKRON	BLEDT	20040928AQT	LIC
50A PA ERIE	BMPEDT	20000412AAR	APP
50A WV OAK HILL	DTVPLN	DTVP1784	PLN
51A PA PITTSBURGH	DTVPLN	DTVP1809	PLN
50A DC WASHINGTON	USERRECORD01		APP
Percent new IX =	0.0024%		
Result key:	77		
Scenario	21 Affected station	9	
Before Analysis			
Results for: 50A PA GREENSBURG	DTVPLN	DTVP1776	PLN
HAAT 264.0 m, ATV ERP 362.0 kW			
	POPULATION	AREA (sq km)	
within Noise Limited Contour	2831860	19269.0	
not affected by terrain losses	2709362	17552.3	
lost to NTSC IX	0	0.0	
lost to additional IX by ATV	62147	1099.0	
lost to ATV IX only	62147	1099.0	
lost to all IX	62147	1099.0	
Potential Interfering Stations Included in above Scenario	21		
50A OH AKRON	DTVPLN	DTVP1772	PLN
50A PA ERIE	BMPEDT	20000412AAR	APP
50A WV OAK HILL	BLCDDT	20070426AAK	LIC
51A PA PITTSBURGH	DTVPLN	DTVP1809	PLN

Figure 3

51A PA PITTSBURGH	BLCDDT	20041014AEY	LIC
After Analysis			
Results for: 50A PA GREENSBURG	DTVPLN	DTVP1776	PLN
HAAT 264.0 m, ATV ERP 362.0 kW			
	POPULATION	AREA (sq km)	
within Noise Limited Contour	2831860	19269.0	
not affected by terrain losses	2709362	17552.3	
lost to NTSC IX	0	0.0	
lost to additional IX by ATV	62211	1103.0	
lost to ATV IX only	62211	1103.0	
lost to all IX	62211	1103.0	
Potential Interfering Stations Included in above Scenario	21		
50A OH AKRON	DTVPLN	DTVP1772	PLN
50A PA ERIE	BMPEDT	20000412AAR	APP
50A WV OAK HILL	BLCDDT	20070426AAK	LIC
51A PA PITTSBURGH	BLCDDT	20041014AEY	LIC
50A DC WASHINGTON	USERRECORD01		APP
Percent new IX =	0.0024%		
Result key:	78		
Scenario	22 Affected station	9	
Before Analysis			
Results for: 50A PA GREENSBURG	DTVPLN	DTVP1776	PLN
HAAT 264.0 m, ATV ERP 362.0 kW			
	POPULATION	AREA (sq km)	
within Noise Limited Contour	2831860	19269.0	
not affected by terrain losses	2709362	17552.3	
lost to NTSC IX	0	0.0	
lost to additional IX by ATV	62147	1099.0	
lost to ATV IX only	62147	1099.0	
lost to all IX	62147	1099.0	
Potential Interfering Stations Included in above Scenario	22		
50A OH AKRON	DTVPLN	DTVP1772	PLN
50A PA ERIE	BMPEDT	20000412AAR	APP
50A WV OAK HILL	BLCDDT	20070426AAK	LIC
51A PA PITTSBURGH	DTVPLN	DTVP1809	PLN
After Analysis			
Results for: 50A PA GREENSBURG	DTVPLN	DTVP1776	PLN
HAAT 264.0 m, ATV ERP 362.0 kW			
	POPULATION	AREA (sq km)	
within Noise Limited Contour	2831860	19269.0	
not affected by terrain losses	2709362	17552.3	
lost to NTSC IX	0	0.0	
lost to additional IX by ATV	62211	1103.0	
lost to ATV IX only	62211	1103.0	
lost to all IX	62211	1103.0	

Figure 3

Potential Interfering Stations Included in above Scenario 22

50A OH AKRON	DTVPLN	DTVP1772	PLN
50A PA ERIE	BMPEDT	20000412AAR	APP
50A WV OAK HILL	BLCDT	20070426AAK	LIC
51A PA PITTSBURGH	DTVPLN	DTVP1809	PLN
50A DC WASHINGTON	USERRECORD01		APP

Percent new IX = 0.0024%

Result key: 79  
Scenario 23 Affected station 9  
Before Analysis

Results for: 50A PA GREENSBURG	DTVPLN	DTVP1776	PLN
HAAT 264.0 m, ATV ERP 362.0 kW			
	POPULATION	AREA (sq km)	
within Noise Limited Contour	2831860	19269.0	
not affected by terrain losses	2709362	17552.3	
lost to NTSC IX	0	0.0	
lost to additional IX by ATV	62625	1119.1	
lost to ATV IX only	62625	1119.1	
lost to all IX	62625	1119.1	

Potential Interfering Stations Included in above Scenario 23

50A OH AKRON	DTVPLN	DTVP1772	PLN
50A PA ERIE	BMPEDT	20000412AAR	APP
50A WV OAK HILL	DTVPLN	DTVP1784	PLN
51A PA PITTSBURGH	BLCDT	20041014AEY	LIC

After Analysis

Results for: 50A PA GREENSBURG	DTVPLN	DTVP1776	PLN
HAAT 264.0 m, ATV ERP 362.0 kW			
	POPULATION	AREA (sq km)	
within Noise Limited Contour	2831860	19269.0	
not affected by terrain losses	2709362	17552.3	
lost to NTSC IX	0	0.0	
lost to additional IX by ATV	62689	1123.1	
lost to ATV IX only	62689	1123.1	
lost to all IX	62689	1123.1	

Potential Interfering Stations Included in above Scenario 23

50A OH AKRON	DTVPLN	DTVP1772	PLN
50A PA ERIE	BMPEDT	20000412AAR	APP
50A WV OAK HILL	DTVPLN	DTVP1784	PLN
51A PA PITTSBURGH	BLCDT	20041014AEY	LIC
50A DC WASHINGTON	USERRECORD01		APP

Percent new IX = 0.0024%

Result key: 80  
Scenario 24 Affected station 9  
Before Analysis

Figure 3

Results for: 50A PA GREENSBURG	DTVPLN	DTVP1776	PLN
HAAT 264.0 m, ATV ERP 362.0 kW			
	POPULATION	AREA (sq km)	
within Noise Limited Contour	2831860	19269.0	
not affected by terrain losses	2709362	17552.3	
lost to NTSC IX	0	0.0	
lost to additional IX by ATV	62625	1119.1	
lost to ATV IX only	62625	1119.1	
lost to all IX	62625	1119.1	

Potential Interfering Stations Included in above Scenario 24

50A OH AKRON	DTVPLN	DTVP1772	PLN
50A PA ERIE	BMPEDT	20000412AAR	APP
50A WV OAK HILL	DTVPLN	DTVP1784	PLN
51A PA PITTSBURGH	DTVPLN	DTVP1809	PLN

After Analysis

Results for: 50A PA GREENSBURG	DTVPLN	DTVP1776	PLN
HAAT 264.0 m, ATV ERP 362.0 kW			
	POPULATION	AREA (sq km)	
within Noise Limited Contour	2831860	19269.0	
not affected by terrain losses	2709362	17552.3	
lost to NTSC IX	0	0.0	
lost to additional IX by ATV	62689	1123.1	
lost to ATV IX only	62689	1123.1	
lost to all IX	62689	1123.1	

Potential Interfering Stations Included in above Scenario 24

50A OH AKRON	DTVPLN	DTVP1772	PLN
50A PA ERIE	BMPEDT	20000412AAR	APP
50A WV OAK HILL	DTVPLN	DTVP1784	PLN
51A PA PITTSBURGH	DTVPLN	DTVP1809	PLN
50A DC WASHINGTON	USERRECORD01		APP

Percent new IX = 0.0024%

Worst case new IX 0.0024% Scenario 7

#####

Analysis of Interference to Affected Station 10

Analysis of current record				
Channel	Call	City/State	Application	Ref. No.
50	WTLU-CA	LYNCHBURG VA	BLTTA	-20040812AAE

Stations Potentially Affecting This Station

Chan	Call	City/State	Dist(km)	Status	Application	Ref. No.
46	WHTJ	CHARLOTTESVILLE VA	116.1	LIC	BLEDT	-20050819ADO
46	WHTJ	CHARLOTTESVILLE VA	116.1	PLN	DTVPLN	-DTVP1661
49	W49AP	ROANOKE VA	61.7	LIC	BLTTL	-19890504IE



Figure 3

50	WDCW	WASHINGTON DC	282.6	LIC	BLCT	-20030819ABE
50	WDCW	WASHINGTON DC	282.6	PLN	DTVPLN	-DTVP1762
50	960723KX	ASHLAND KY	368.5	APP	BPCT	-19960723KX
50	WAXN-TV	KANNAPOLIS NC	248.0	LIC	BLCDT	-20020426AAN
50	WAXN-TV	KANNAPOLIS NC	248.0	PLN	DTVPLN	-DTVP1769
50	WRAZ	RALEIGH NC	184.1	LIC	BLCT	-19950925KE
50	WPCB-TV	GREENSBURG PA	357.1	LIC	BLCDT	-20030409ABC
50	WPCB-TV	GREENSBURG PA	357.1	PLN	DTVPLN	-DTVP1776
50	W50CM	CHARLOTTESVILLE VA	116.1	LIC	BLTT	-20031106AJK
50	WGNT	PORTSMOUTH VA	260.0	LIC	BLCDT	-20020718AAK
50	WGNT	PORTSMOUTH VA	260.0	PLN	DTVPLN	-DTVP1780
50	W50BD	MOOREFIELD WV	202.2	LIC	BLTT	-19890920IL
50	WOAY-TV	OAK HILL WV	179.6	LIC	BLCDT	-20070426AAK
50	WOAY-TV	OAK HILL WV	179.6	PLN	DTVPLN	-DTVP1784
51	WVPT	STAUNTON VA	107.6	LIC	BLET	-222
50	WDCW	WASHINGTON DC	282.6	APP	USERRECORD-01	

Proposal causes no interference

#####

#### Analysis of Interference to Affected Station 11

##### Analysis of current record

Channel	Call	City/State	Application	Ref. No.
50	WGNT	PORTSMOUTH VA	BLCDT	-20020718AAK

#### Stations Potentially Affecting This Station

Chan	Call	City/State	Dist(km)	Status	Application	Ref. No.
49	WRAZ	RALEIGH NC	224.2	CP MOD	BMPCDT	-20040329AKW
49	WRAZ	RALEIGH NC	224.2	PLN	DTVPLN	-DTVP1745
50	WDCW	WASHINGTON DC	244.1	PLN	DTVPLN	-DTVP1762
50	WAXN-TV	KANNAPOLIS NC	420.2	LIC	BLCDT	-20020426AAN
50	WAXN-TV	KANNAPOLIS NC	420.2	PLN	DTVPLN	-DTVP1769
51	WEPX	GREENVILLE NC	178.7	CP	BPCDT	-20080317ABS
51	WEPX	GREENVILLE NC	178.7	PLN	DTVPLN	-DTVP1802
50	WDCW	WASHINGTON DC	244.1	APP	USERRECORD-01	

Total scenarios = 1

Result key: 81  
 Scenario 1 Affected station 11  
 Before Analysis

Results for: 50A VA PORTSMOUTH		BLCDT	20020718AAK	LIC
HAAT 264.0 m, ATV ERP 800.0 kW				
	POPULATION	AREA (sq km)		
within Noise Limited Contour	1762835	23806.9		
not affected by terrain losses	1762835	23806.9		
lost to NTSC IX	0	0.0		
lost to additional IX by ATV	0	0.0		
lost to ATV IX only	0	0.0		
lost to all IX	0	0.0		

Figure 3

Potential Interfering Stations Included in above Scenario 1

#### After Analysis

Results for: 50A VA PORTSMOUTH		BLCDT	20020718AAK	LIC
HAAT 264.0 m, ATV ERP 800.0 kW				
	POPULATION	AREA (sq km)		
within Noise Limited Contour	1762835	23806.9		
not affected by terrain losses	1762835	23806.9		
lost to NTSC IX	0	0.0		
lost to additional IX by ATV	1304	24.1		
lost to ATV IX only	1304	24.1		
lost to all IX	1304	24.1		

Potential Interfering Stations Included in above Scenario 1

50A DC WASHINGTON USERRECORD01 APP

Percent new IX = 0.0740%

Worst case new IX 0.0740% Scenario 1

#####

#### Analysis of Interference to Affected Station 12

##### Analysis of current record

Channel	Call	City/State	Application	Ref. No.
50	WGNT	PORTSMOUTH VA	DTVPLN	-DTVP1780

#### Stations Potentially Affecting This Station

Chan	Call	City/State	Dist(km)	Status	Application	Ref. No.
49	WRAZ	RALEIGH NC	224.2	CP MOD	BMPCDT	-20040329AKW
49	WRAZ	RALEIGH NC	224.2	PLN	DTVPLN	-DTVP1745
50	WDCW	WASHINGTON DC	244.1	PLN	DTVPLN	-DTVP1762
50	WAXN-TV	KANNAPOLIS NC	420.2	LIC	BLCDT	-20020426AAN
50	WAXN-TV	KANNAPOLIS NC	420.2	PLN	DTVPLN	-DTVP1769
51	WEPX	GREENVILLE NC	178.7	CP	BPCDT	-20080317ABS
51	WEPX	GREENVILLE NC	178.7	PLN	DTVPLN	-DTVP1802
50	WDCW	WASHINGTON DC	244.1	APP	USERRECORD-01	

Total scenarios = 1

Result key: 82  
 Scenario 1 Affected station 12  
 Before Analysis

Results for: 50A VA PORTSMOUTH		DTVPLN	DTVP1780	PLN
HAAT 264.0 m, ATV ERP 800.0 kW				
	POPULATION	AREA (sq km)		
within Noise Limited Contour	1762835	23806.9		
not affected by terrain losses	1762835	23806.9		

Figure 3

```

lost to NTSC IX                0        0.0
lost to additional IX by ATV    0        0.0
lost to ATV IX only            0        0.0
lost to all IX                 0        0.0

Potential Interfering Stations Included in above Scenario    1

After Analysis

Results for: 50A VA PORTSMOUTH      DTVPLN    DTVP1780    PLN
HAAT  264.0 m, ATV ERP  800.0 kW
      POPULATION    AREA (sq km)
within Noise Limited Contour    1762835    23806.9
not affected by terrain losses    1762835    23806.9
lost to NTSC IX                  0          0.0
lost to additional IX by ATV      1304      24.1
lost to ATV IX only              1304      24.1
lost to all IX                   1304      24.1

Potential Interfering Stations Included in above Scenario    1

50A DC WASHINGTON      USERRECORD01      APP

Percent new IX =      0.0740%

Worst case new IX      0.0740% Scenario    1

#####

```

## Analysis of Interference to Affected Station 13

```

Analysis of current record
Channel    Call      City/State      Application Ref. No.
  50      WOAY-TV    OAK HILL WV      BLCDDT      -20070426AAK

Stations Potentially Affecting This Station

Chan  Call      City/State      Dist(km) Status Application Ref. No.
 49  WLFG      GRUNDY VA       149.8  CP      BPCDDT      -19991029AGK
 49  WLFG      GRUNDY VA       149.8  PLN      DTVPLN      -DTVPI754
 49  WTAP-TV    PARKERSBURG WV  158.9  LIC      BLCDDT      -20040423ABG
 49  WTAP-TV    PARKERSBURG WV  158.9  PLN      DTVPLN      -DTVPI757
 50  WDCW      WASHINGTON DC    375.9  PLN      DTVPLN      -DTVPI762
 50  WAXN-TV    KANNAPOLIS NC   302.0  LIC      BLCDDT      -20020426AAN
 50  WAXN-TV    KANNAPOLIS NC   302.0  PLN      DTVPLN      -DTVPI769
 50  WEOA      AKRON OH        349.9  LIC      BLEDDT      -20040928AQT
 50  WEOA      AKRON OH        349.9  PLN      DTVPLN      -DTVPI772
 50  WDTN      DAYTON OH       332.5  LIC      BLCDDT      -20050629AAL
 50  WDTN      DAYTON OH       332.5  PLN      DTVPLN      -DTVPI773
 50  WPCB-TV    GREENSBURG PA   295.3  LIC      BLCDDT      -20030409ABC
 50  WPCB-TV    GREENSBURG PA   295.3  PLN      DTVPLN      -DTVPI776
 50  WDCW      WASHINGTON DC    375.9  APP      USERRECORD-01

Proposal causes no interference

```

Figure 3

```

#####

Analysis of Interference to Affected Station 14

Analysis of current record
Channel    Call      City/State      Application Ref. No.
  50      WOAY-TV    OAK HILL WV      DTVPLN      -DTVPI784

Stations Potentially Affecting This Station

Chan  Call      City/State      Dist(km) Status Application Ref. No.
 49  WLFG      GRUNDY VA       149.8  CP      BPCDDT      -19991029AGK
 49  WLFG      GRUNDY VA       149.8  PLN      DTVPLN      -DTVPI754
 49  WTAP-TV    PARKERSBURG WV  158.9  LIC      BLCDDT      -20040423ABG
 49  WTAP-TV    PARKERSBURG WV  158.9  PLN      DTVPLN      -DTVPI757
 50  WDCW      WASHINGTON DC    375.9  PLN      DTVPLN      -DTVPI762
 50  WAXN-TV    KANNAPOLIS NC   302.0  LIC      BLCDDT      -20020426AAN
 50  WAXN-TV    KANNAPOLIS NC   302.0  PLN      DTVPLN      -DTVPI769
 50  WEOA      AKRON OH        349.9  LIC      BLEDDT      -20040928AQT
 50  WEOA      AKRON OH        349.9  PLN      DTVPLN      -DTVPI772
 50  WDTN      DAYTON OH       332.5  LIC      BLCDDT      -20050629AAL
 50  WDTN      DAYTON OH       332.5  PLN      DTVPLN      -DTVPI773
 50  WPCB-TV    GREENSBURG PA   295.3  LIC      BLCDDT      -20030409ABC
 50  WPCB-TV    GREENSBURG PA   295.3  PLN      DTVPLN      -DTVPI776
 50  WDCW      WASHINGTON DC    375.9  APP      USERRECORD-01

Proposal causes no interference

#####

```

## Analysis of Interference to Affected Station 15

```

Analysis of current record
Channel    Call      City/State      Application Ref. No.
  50      WDCW      WASHINGTON DC    USERRECORD-01

Stations Potentially Affecting This Station

Chan  Call      City/State      Dist(km) Status Application Ref. No.
 49  WHSV-TV    HARRISONBURG VA  144.8  LIC      BLCDDT      -20060413ACO
 49  WHSV-TV    HARRISONBURG VA  144.8  PLN      DTVPLN      -DTVPI755
 50  WQLN      ERIE PA         428.0  LIC      BLEDDT      -20060601BCQ
 50  WQLN      ERIE PA         428.0  PLN      DTVPLN      -DTVPI775
 50  WQLN      ERIE PA         428.0  APP      BNPEDT      -20000412AAR
 50  WPCB-TV    GREENSBURG PA   284.3  LIC      BLCDDT      -20030409ABC
 50  WPCB-TV    GREENSBURG PA   284.3  PLN      DTVPLN      -DTVPI776
 50  WGNT      PORTSMOUTH VA   244.1  LIC      BLCDDT      -20020718AAK
 50  WGNT      PORTSMOUTH VA   244.1  PLN      DTVPLN      -DTVPI780
 50  WOAY-TV    OAK HILL WV     375.9  LIC      BLCDDT      -20070426AAK
 50  WOAY-TV    OAK HILL WV     375.9  PLN      DTVPLN      -DTVPI784

Total scenarios =      2

```

Figure 3

Result key: 83  
Scenario 1 Affected station 15  
Before Analysis

Results for: 50A DC WASHINGTON USERRECORD01 APP  
HAAT 253.0 m, ATV ERP 1000.0 kW

	POPULATION	AREA (sq km)
within Noise Limited Contour	7271165	24300.0
not affected by terrain losses	7231088	23563.6
lost to NTSC IX	0	0.0
lost to additional IX by ATV	16483	164.1
lost to ATV IX only	16483	164.1
lost to all IX	16483	164.1

Potential Interfering Stations Included in above Scenario 1

50A VA PORTSMOUTH BLCDT 20020718AAK LIC

Result key: 84  
Scenario 2 Affected station 15  
Before Analysis

Results for: 50A DC WASHINGTON USERRECORD01 APP  
HAAT 253.0 m, ATV ERP 1000.0 kW

	POPULATION	AREA (sq km)
within Noise Limited Contour	7271165	24300.0
not affected by terrain losses	7231088	23563.6
lost to NTSC IX	0	0.0
lost to additional IX by ATV	16483	164.1
lost to ATV IX only	16483	164.1
lost to all IX	16483	164.1

Potential Interfering Stations Included in above Scenario 2

50A VA PORTSMOUTH DTVPLN DTVPL780 PLN

#####

FINISHED FINISHED FINISHED FINISHED FINISHED FINISHED

# APPENDIX

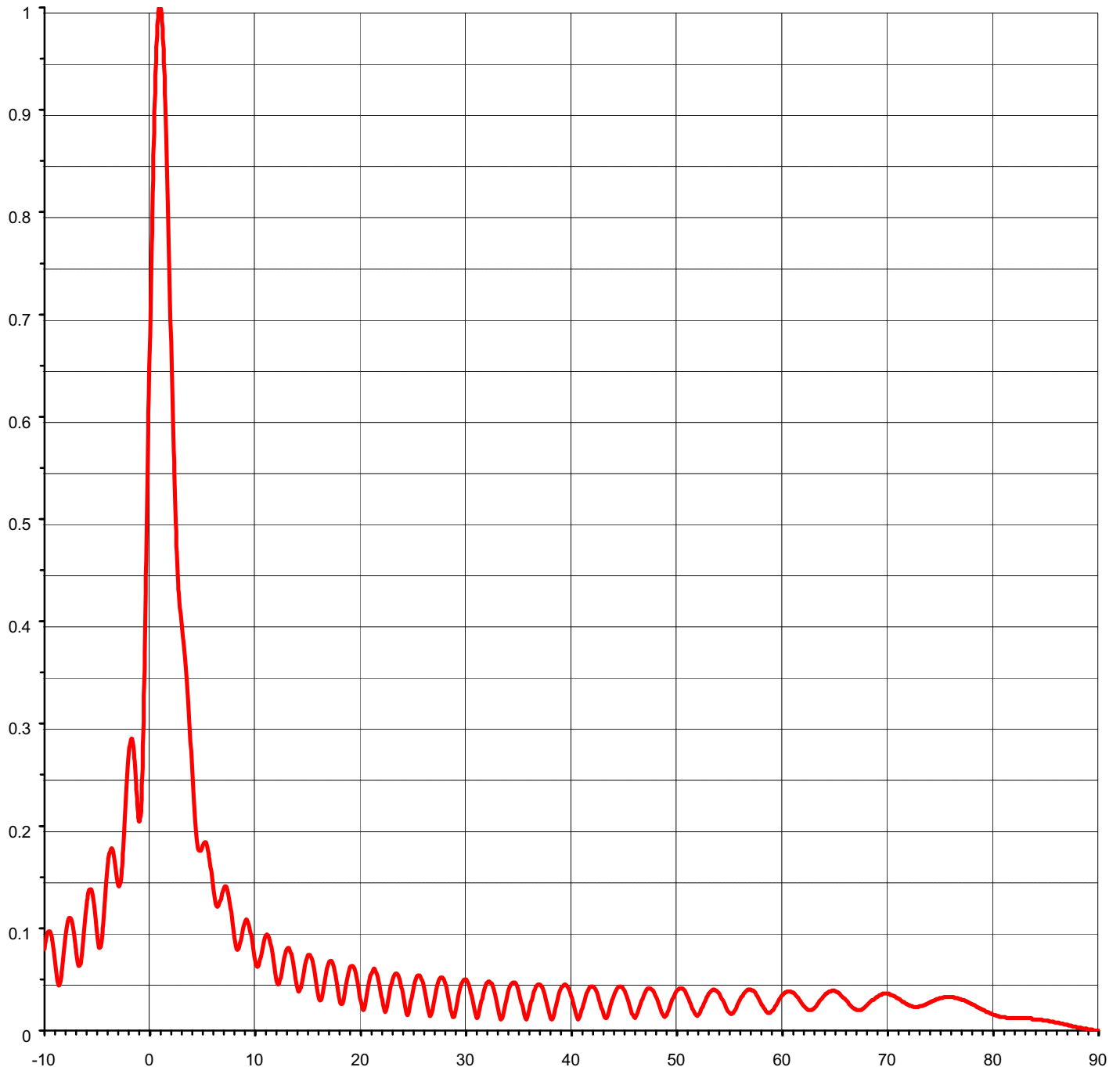
TRANSMITTING ANTENNA  
VERTICAL PLANE PATTERN



Proposal Number	<b>DCA-9806</b>	Revision:	<b>3</b>
Date	<b>12-Jul-02</b>		
Call Letters	<b>WBDC</b>	Channel	<b>50</b>
Location	<b>Washington, DC</b>		
Customer	<b>Tribune</b>		
Antenna Type	<b>TFU-30ETT-H O6 DC</b>		

## ELEVATION PATTERN

RMS Gain at Main Lobe	<b>24.00 ( 13.80 dB )</b>	Beam Tilt	<b>0.95 deg</b>
RMS Gain at Horizontal	<b>11.10 ( 10.45 dB )</b>	Frequency	<b>689.00 MHz</b>
Calculated / Measured	<b>Calculated</b>	Drawing #	<b>30E240095-90</b>



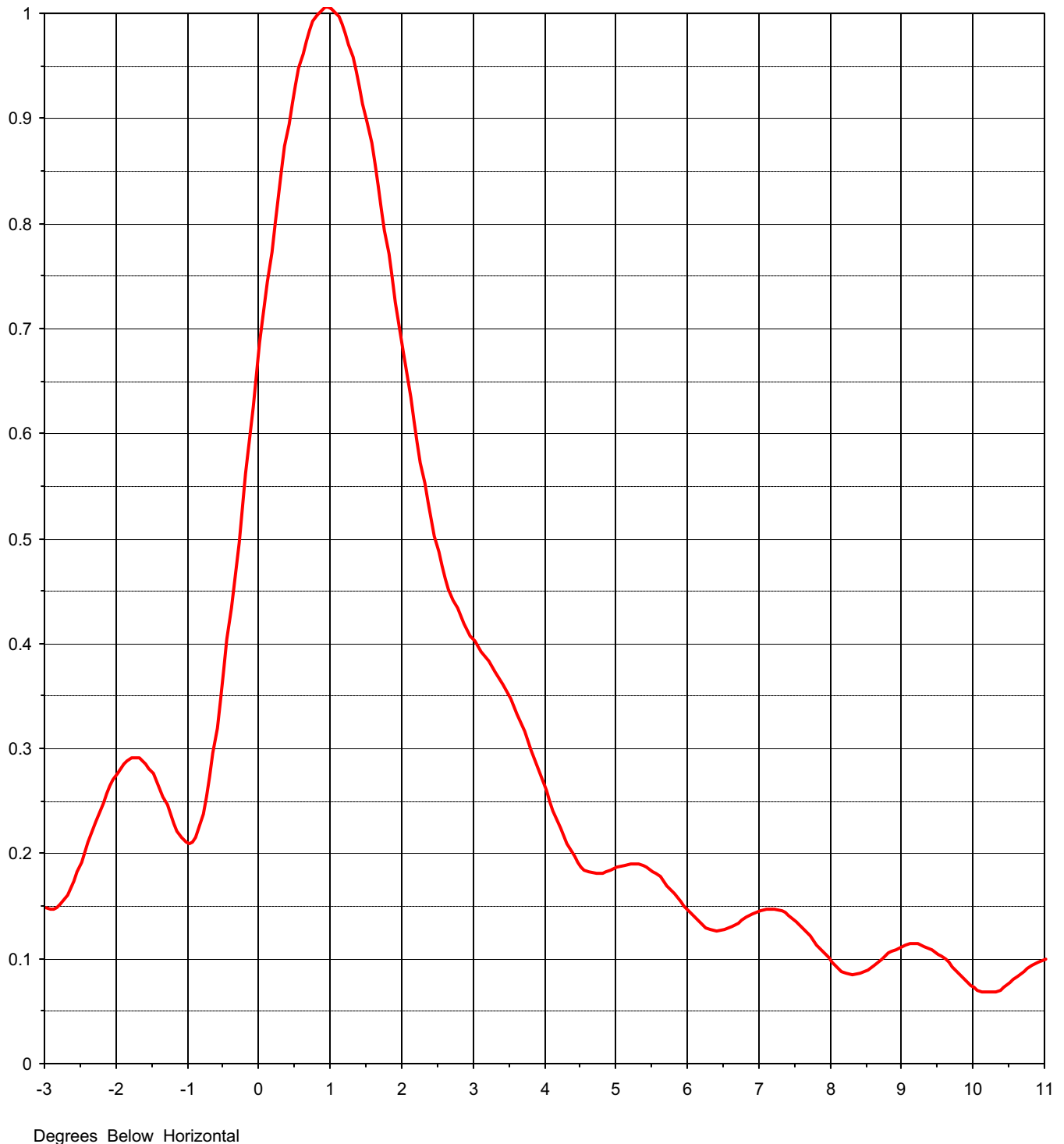
Degrees Below Horizontal



Proposal Number	<b>DCA-9806</b>	Revision:	<b>3</b>
Date	<b>12-Jul-02</b>		
Call Letters	<b>WBDC</b>	Channel	<b>50</b>
Location	<b>Washington, DC</b>		
Customer	<b>Tribune</b>		
Antenna Type	<b>TFU-30ETT-H O6 DC</b>		

## ELEVATION PATTERN

RMS Gain at Main Lobe	<b>24.00 ( 13.80 dB )</b>	Beam Tilt	<b>0.95 deg</b>
RMS Gain at Horizontal	<b>11.10 ( 10.45 dB )</b>	Frequency	<b>689.00 MHz</b>
Calculated / Measured	<b>Calculated</b>	Drawing #	<b>30E240095</b>





Proposal Number **DCA-9806**      Revision: **3**  
 Date **12-Jul-02**  
 Call Letters **WBDC**      Channel **50**  
 Location **Washington, DC**  
 Customer **Tribune**  
 Antenna Type **TFU-30ETT-H O6 DC**

## TABULATION OF ELEVATION PATTERN

Elevation Pattern Drawing #: **30E240095-90**

Angle	Field	Angle	Field	Angle	Field	Angle	Field	Angle	Field	Angle	Field
-10.0	0.080	2.4	0.512	10.6	0.072	30.5	0.039	51.0	0.035	71.5	0.028
-9.5	0.097	2.6	0.456	10.8	0.082	31.0	0.015	51.5	0.023	72.0	0.025
-9.0	0.067	2.8	0.420	11.0	0.091	31.5	0.027	52.0	0.014	72.5	0.023
-8.5	0.048	3.0	0.396	11.5	0.087	32.0	0.046	52.5	0.023	73.0	0.024
-8.0	0.093	3.2	0.377	12.0	0.055	32.5	0.046	53.0	0.034	73.5	0.025
-7.5	0.109	3.4	0.355	12.5	0.052	33.0	0.027	53.5	0.040	74.0	0.028
-7.0	0.077	3.6	0.327	13.0	0.078	33.5	0.012	54.0	0.037	74.5	0.030
-6.5	0.072	3.8	0.292	13.5	0.075	34.0	0.035	54.5	0.028	75.0	0.032
-6.0	0.123	4.0	0.254	14.0	0.045	34.5	0.047	55.0	0.018	75.5	0.033
-5.5	0.135	4.2	0.218	14.5	0.047	35.0	0.041	55.5	0.019	76.0	0.033
-5.0	0.094	4.4	0.191	15.0	0.071	35.5	0.020	56.0	0.029	76.5	0.032
-4.5	0.097	4.6	0.177	15.5	0.068	36.0	0.017	56.5	0.037	77.0	0.030
-4.0	0.161	4.8	0.176	16.0	0.038	36.5	0.038	57.0	0.040	77.5	0.028
-3.5	0.175	5.0	0.181	16.5	0.038	37.0	0.045	57.5	0.037	78.0	0.026
-3.0	0.142	5.2	0.184	17.0	0.064	37.5	0.036	58.0	0.028	78.5	0.023
-2.8	0.145	5.4	0.181	17.5	0.063	38.0	0.016	58.5	0.019	79.0	0.020
-2.6	0.168	5.6	0.172	18.0	0.035	38.5	0.020	59.0	0.018	79.5	0.018
-2.4	0.205	5.8	0.156	18.5	0.033	39.0	0.039	59.5	0.025	80.0	0.015
-2.2	0.242	6.0	0.139	19.0	0.059	39.5	0.045	60.0	0.034	80.5	0.014
-2.0	0.271	6.2	0.126	19.5	0.060	40.0	0.036	60.5	0.038	81.0	0.013
-1.8	0.285	6.4	0.121	20.0	0.034	40.5	0.016	61.0	0.037	81.5	0.012
-1.6	0.279	6.6	0.125	20.5	0.025	41.0	0.018	61.5	0.033	82.0	0.012
-1.4	0.256	6.8	0.133	21.0	0.053	41.5	0.036	62.0	0.026	82.5	0.012
-1.2	0.223	7.0	0.139	21.5	0.058	42.0	0.043	62.5	0.020	83.0	0.012
-1.0	0.204	7.2	0.141	22.0	0.037	42.5	0.037	63.0	0.021	83.5	0.012
-0.8	0.232	7.4	0.135	22.5	0.020	43.0	0.020	63.5	0.027	84.0	0.011
-0.6	0.314	7.6	0.124	23.0	0.046	43.5	0.014	64.0	0.034	84.5	0.011
-0.4	0.428	7.8	0.107	23.5	0.056	44.0	0.032	64.5	0.038	85.0	0.010
-0.2	0.555	8.0	0.091	24.0	0.040	44.5	0.042	65.0	0.038	85.5	0.009
0.0	0.680	8.2	0.080	24.5	0.015	45.0	0.040	65.5	0.035	86.0	0.008
0.2	0.794	8.4	0.080	25.0	0.037	45.5	0.028	66.0	0.030	86.5	0.007
0.4	0.888	8.6	0.088	25.5	0.054	46.0	0.013	66.5	0.024	87.0	0.006
0.6	0.955	8.8	0.099	26.0	0.046	46.5	0.022	67.0	0.020	87.5	0.004
0.8	0.993	9.0	0.106	26.5	0.020	47.0	0.036	67.5	0.020	88.0	0.003
1.0	0.999	9.2	0.108	27.0	0.027	47.5	0.041	68.0	0.025	88.5	0.002
1.2	0.975	9.4	0.103	27.5	0.049	48.0	0.035	68.5	0.030	89.0	0.001
1.4	0.924	9.6	0.093	28.0	0.049	48.5	0.022	69.0	0.033	89.5	0.000
1.6	0.851	9.8	0.086	28.5	0.028	49.0	0.014	69.5	0.036	90.0	0.000
1.8	0.765	10.0	0.072	29.0	0.015	49.5	0.026	70.0	0.036		
2.0	0.673	10.2	0.063	29.5	0.040	50.0	0.038	70.5	0.034		
2.2	0.586	10.4	0.063	30.0	0.050	50.5	0.041	71.0	0.031		