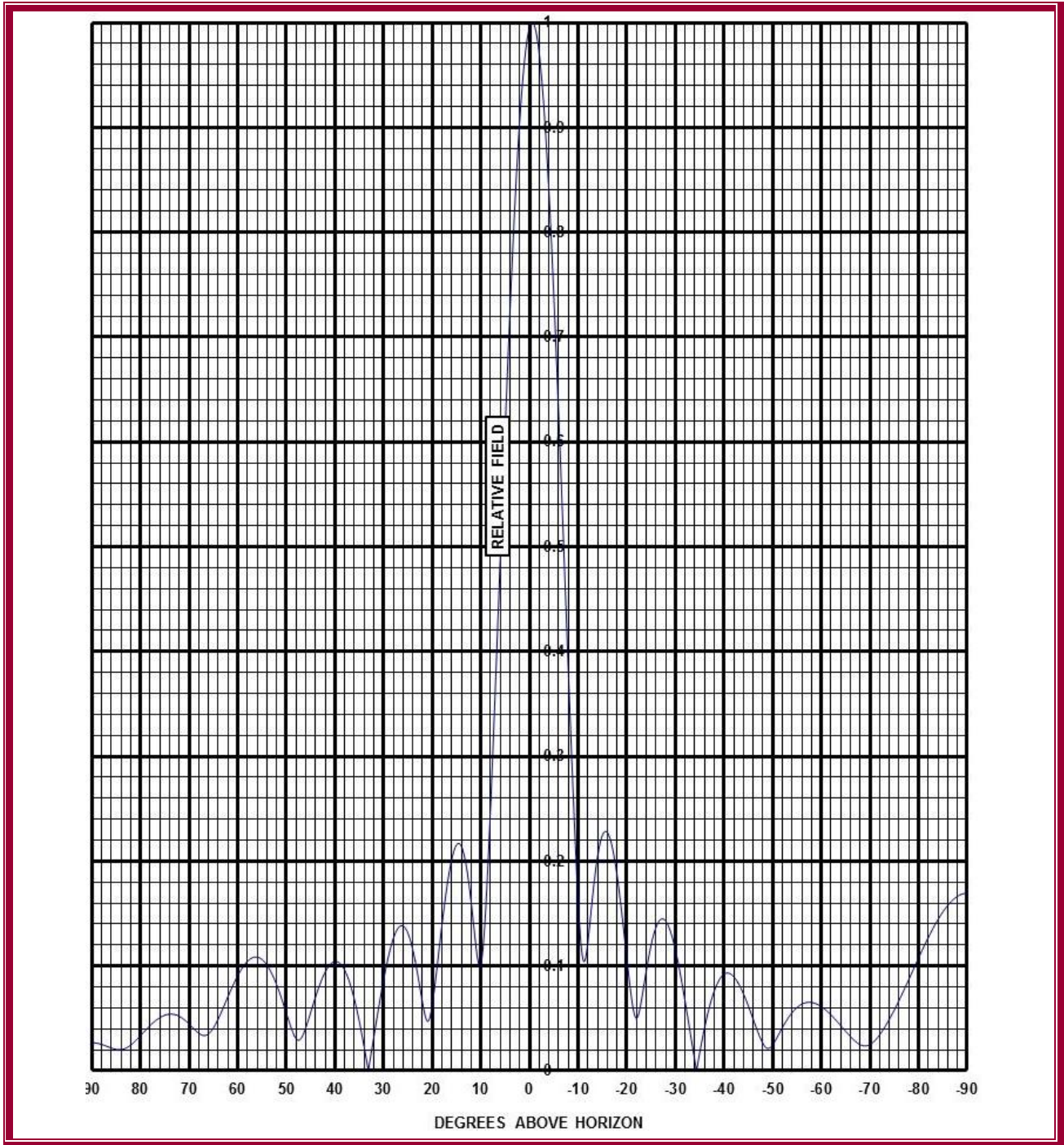




ELEVATION PATTERN
LINEAR VOLTAGE SCALE
100% = MAXIMUM FIELD



Customer: PMCM, Inc.
Channel: 2 (54 – 60 MHz)

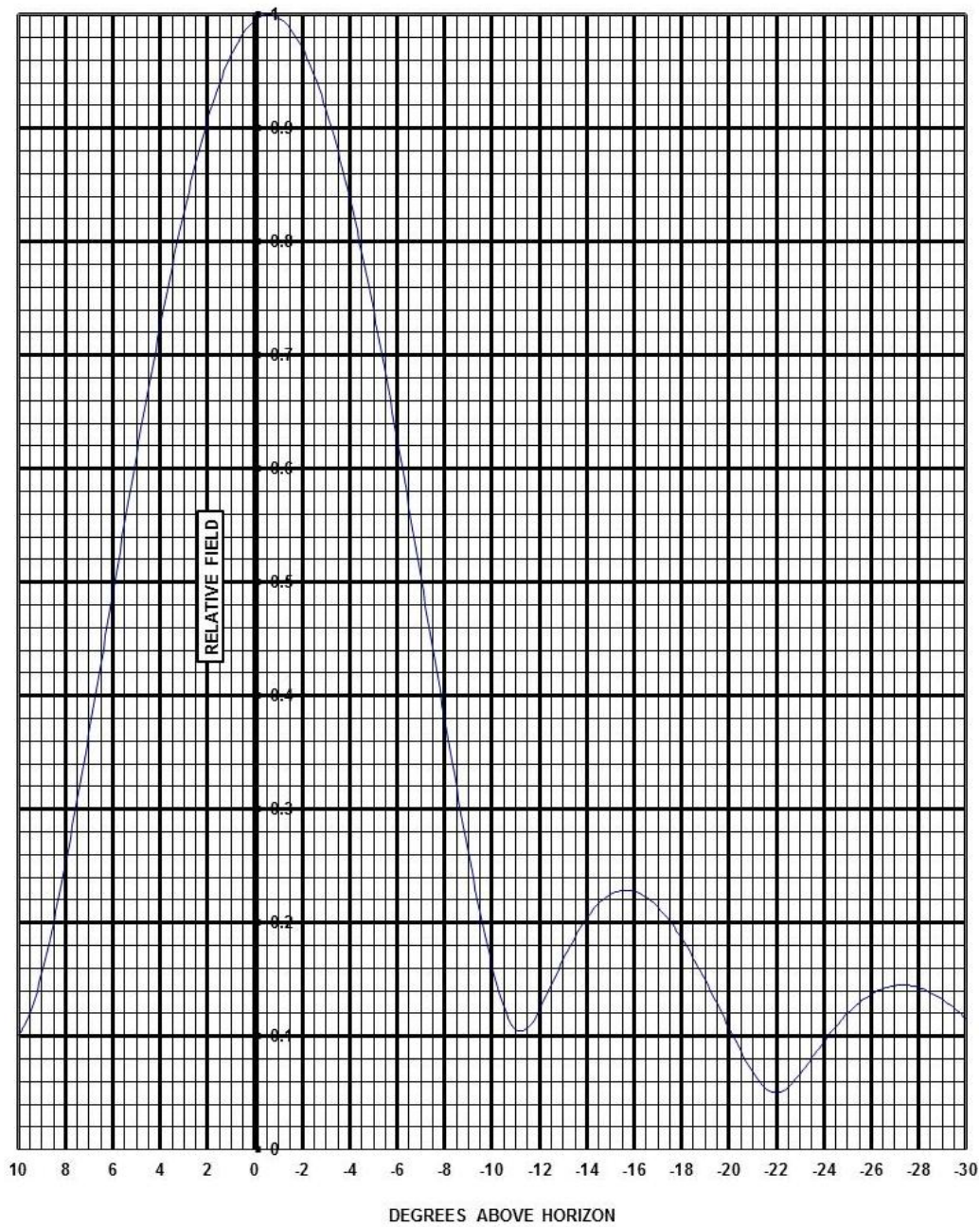
Model: JCPD-6/4 (24)R
Description: VHF Panel Antenna
Notes: Circularly Polarized
-0.5° Beam Tilt, 10% Null Fill



ELEVATION PATTERN, EXP'D

LINEAR VOLTAGE SCALE

100% = MAXIMUM FIELD



Customer: PMCM, Inc.
Channel: 2 (54 – 60 MHz)

Model: JCPD-6/4 (24)R
Description: VHF Panel Antenna
Notes: Circularly Polarized
-0.5° Beam Tilt, 10% Null Fill



JCPD- 6/4(24)

PANELS W/ OFFSET

ELEVATION PATTERN TABULATION

<u>ELEVATION ANGLE</u>	<u>RELATIVE FIELD</u>	<u>ELEVATION ANGLE</u>	<u>RELATIVE FIELD</u>	<u>ELEVATION ANGLE</u>	<u>RELATIVE FIELD</u>
10	0.102	-26	0.137	-61	0.058
9	0.155	-27	0.144	-62	0.053
8	0.252	-28	0.143	-63	0.048
7	0.368	-29	0.133	-64	0.043
6	0.490	-30	0.115	-65	0.038
5	0.612	-31	0.093	-66	0.033
4	0.726	-32	0.066	-67	0.028
3	0.826	-33	0.038	-68	0.025
2	0.907	-34	0.009	-69	0.024
1	0.965	-35	0.017	-70	0.025
0	0.995	-36	0.041	-71	0.029
-1	0.997	-37	0.061	-72	0.034
-2	0.971	-38	0.076	-73	0.041
-3	0.916	-39	0.087	-74	0.049
-4	0.838	-40	0.092	-75	0.058
-5	0.739	-41	0.093	-76	0.067
-6	0.626	-42	0.090	-77	0.077
-7	0.504	-43	0.083	-78	0.087
-8	0.380	-44	0.073	-79	0.097
-9	0.262	-45	0.062	-80	0.108
-10	0.162	-46	0.049	-81	0.118
-11	0.106	-47	0.037	-82	0.127
-12	0.123	-48	0.026	-83	0.136
-13	0.167	-49	0.021	-84	0.144
-14	0.204	-50	0.025	-85	0.152
-15	0.225	-51	0.033	-86	0.158
-16	0.227	-52	0.041	-87	0.163
-17	0.214	-53	0.049	-88	0.166
-18	0.186	-54	0.056	-89	0.169
-19	0.149	-55	0.060	-90	0.169
-20	0.108	-56	0.064		
-21	0.069	-57	0.065		
-22	0.050	-58	0.065		
-23	0.067	-59	0.064		
-24	0.095	-60	0.061		
-25	0.120				

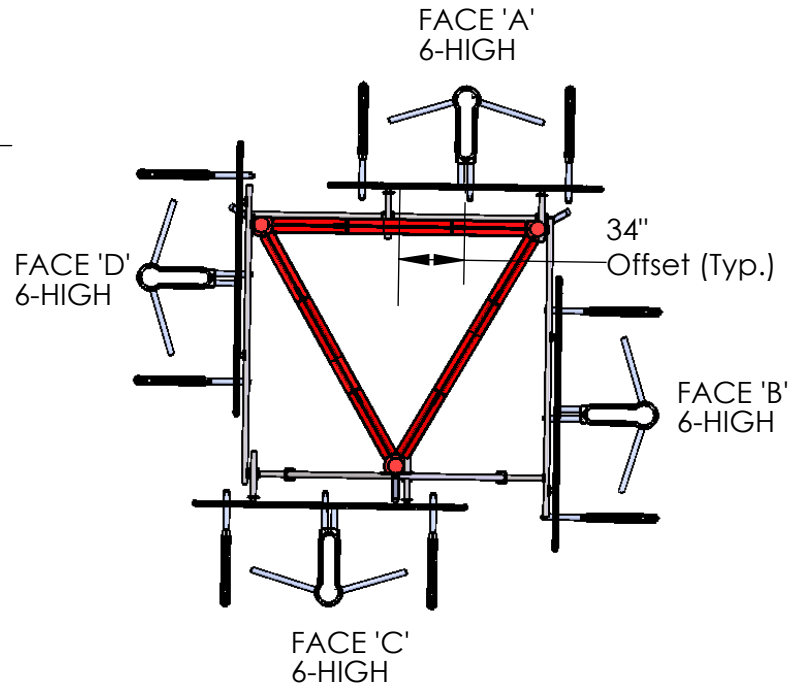
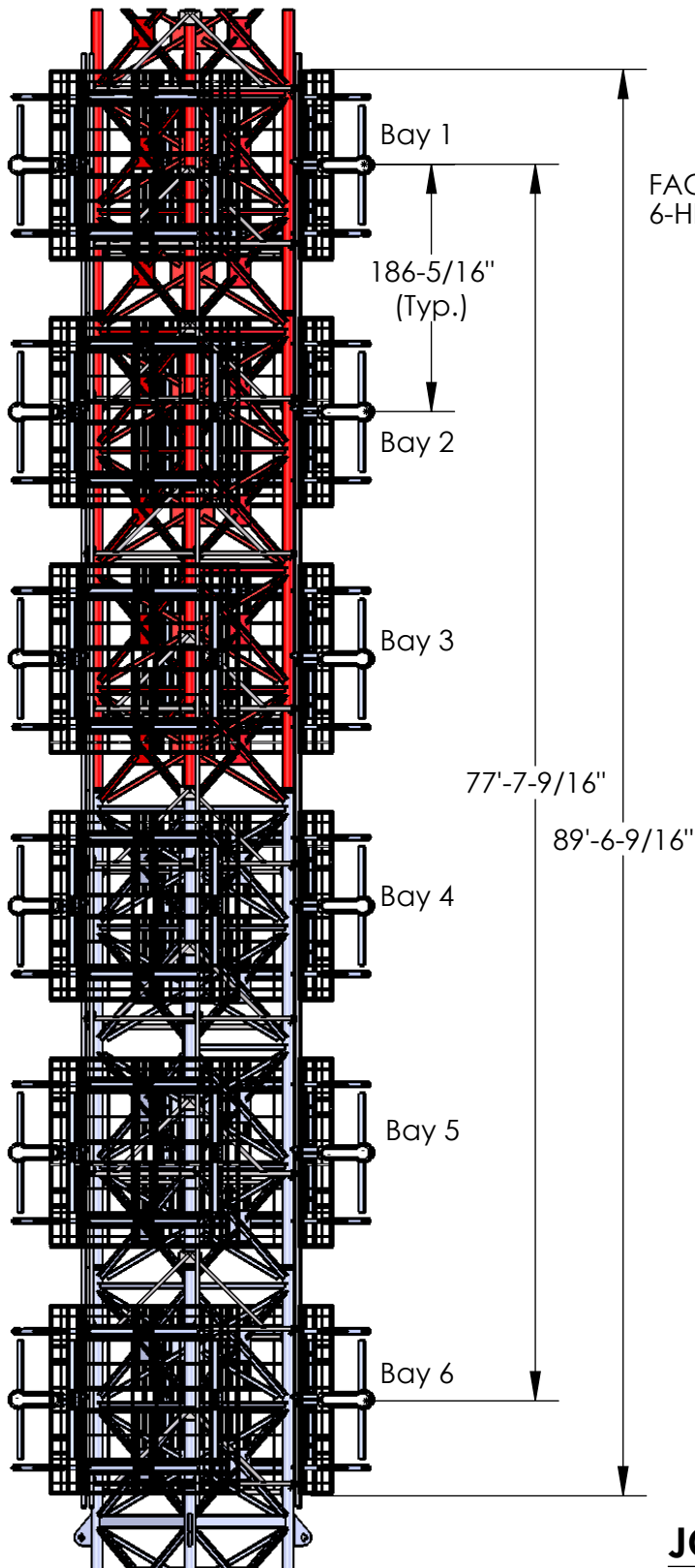
Customer: PMCM, Inc.
Channel: 2 (54 – 60 MHz)

Model: JCPD-6/4 (24)R
Description: VHF Panel Antenna
Notes: Circularly Polarized
-0.5° Beam Tilt, 10% Null Fill



6340 Sky Creek Drive, Sacramento, California 95828
P.O. Box 292880, Sacramento, California 95829-2880

(916)383-1177 FAX (916)383-1182



TOP VIEW

NOTES:

REF: TIA-222-G

IMPORTANT ASSUMPTIONS:

- Importance Class II
- Structure Type 1
- Exposure Category C
- Topographic Category 1
- Basic Wind Speed
90mph (145 km/h)-no ice
- No ice and 2.8" Radial ice

Includes Panel Antennas w/ Radomes
& Feed System.

Antenna Loads w/ Mounts (no ice)

EPA = 1199 sq. ft.

Wt. = 28,667 lbs.

Antenna Loads w/ Mounts & 2.8" ice

EPA = 4543 sq. ft.

Wt. = 142,882 lbs.

**PRELIMINARY DRAWINGS AND
CALCULATIONS**

**JCPD-6.4 (24)-R (0.9 RFR)CH. 2
w/ Offset Panels**

11 July 2013

17402-A-6.4 (24) JCPD Study (Offset Panels).slddrw