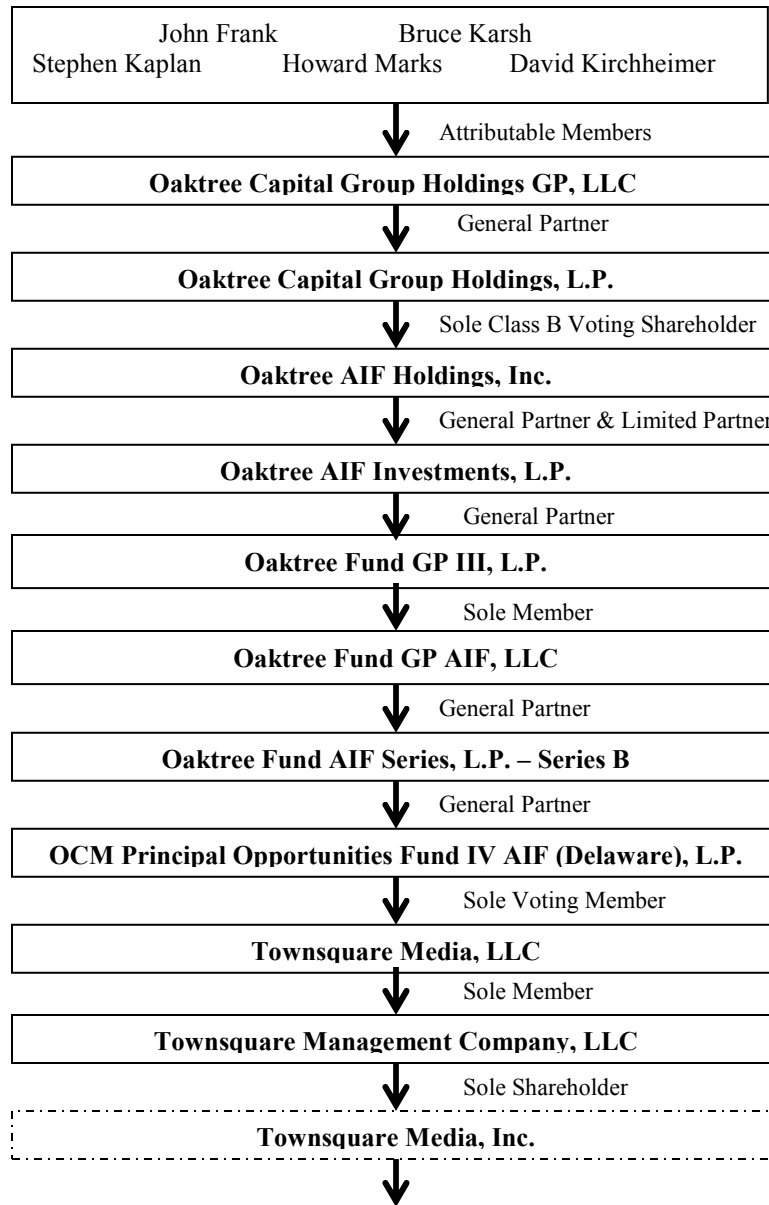
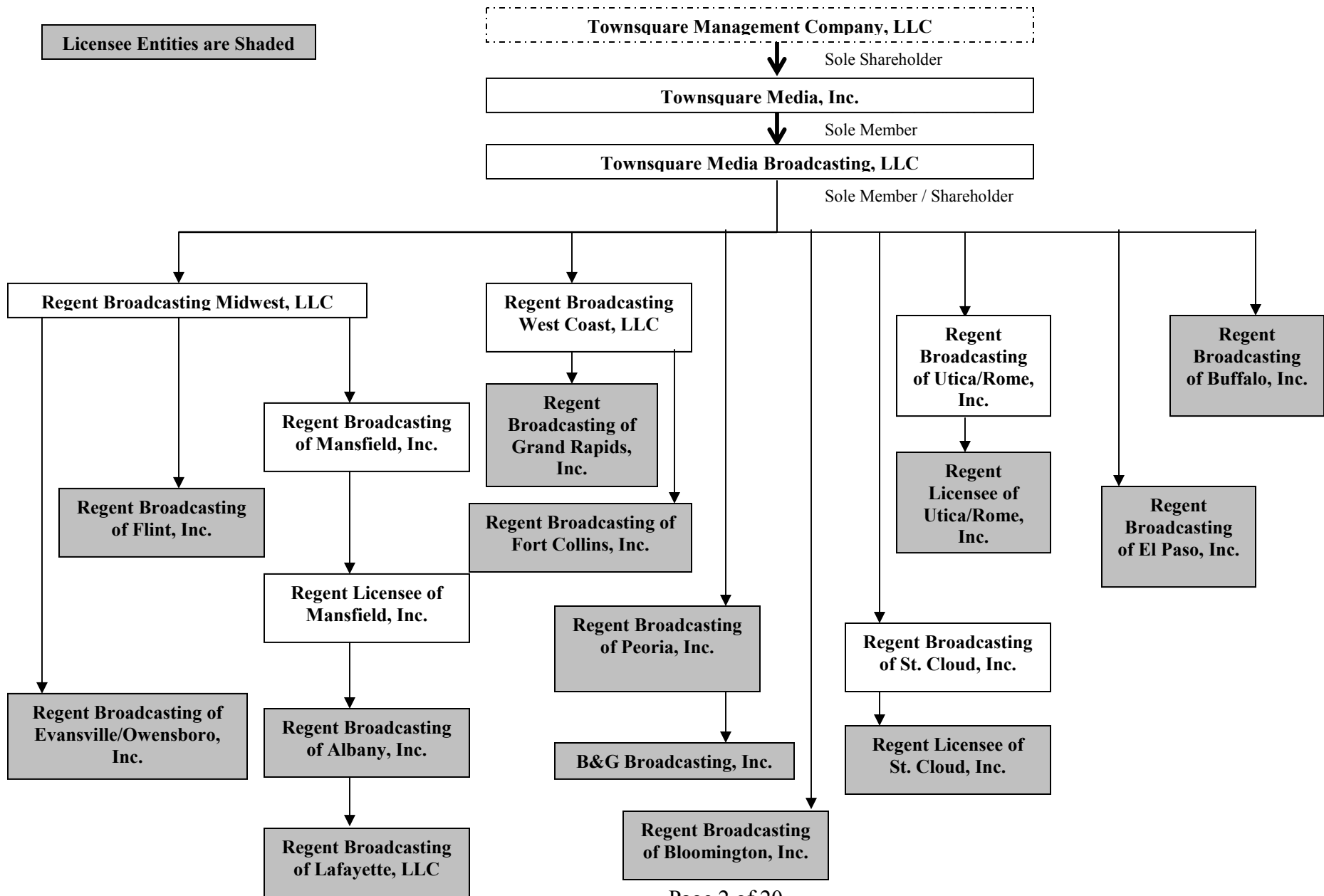


PROPOSED CONTROL STRUCTURE



Continued on Page 2

Licensee Entities are Shaded



ENTITY-SPECIFIC INFORMATION

Regent Broadcasting of Fort Collins, Inc.

Name and Address	Citizenship	Positional Interest	Percentage Vote	Percentage of Total Assets (debt plus equity)
Regent Broadcasting of Fort Collins, Inc. c/o Oaktree Capital Management, L.P. Attn: Andrew Salter 333 South Grand Avenue, 28th Floor Los Angeles, CA 90071	Delaware Corporation	N/A	N/A	N/A
Regent Broadcasting West Coast, LLC c/o Oaktree Capital Management, L.P. Attn: Andrew Salter 333 South Grand Avenue, 28th Floor Los Angeles, CA 90071	Delaware Limited Liability Company	Sole Shareholder	100%	100%
Steven Price c/o FiveWire Ventures, LLC 60 Arch Street Greenwich, CT 06830	U.S.	Chairman of the Board, President, CEO and Director	0%	0%
Stuart Rosenstein c/o FiveWire Ventures, LLC 60 Arch Street Greenwich, CT 06830	U.S.	Executive Vice President and CFO	0%	0%
John King ¹ c/o Regent Communications, Inc. 2000 Fifth Third Center, 511 Walnut Street Cincinnati, OH 45202	U.S.	Senior Vice President	0%	0%
Robert E. Allen, Jr. c/o Regent Communications, Inc. 2000 Fifth Third Center, 511 Walnut Street Cincinnati, OH 45202	U.S.	Vice President - Finance & Accounting and Treasurer	0%	0%
Matthew A. Yeoman c/o Regent Communications, Inc. 2000 Fifth Third Center, 511 Walnut Street Cincinnati, OH 45202	U.S.	Vice President - Operations Assistant Secretary	0%	0%
Ginger Scherbarth c/o Regent Communications, Inc. 2000 Fifth Third Center, 511 Walnut Street Cincinnati, OH 45202	U.S.	Secretary	0%	0%

¹ Legal name: French J. Damewood, III.

Name and Address	Citizenship	Positional Interest	Percentage Vote	Percentage of Total Assets (debt plus equity)
Andrew Salter c/o Oaktree Capital Management, L.P. 333 South Grand Avenue, 28th Floor Los Angeles, CA 90071	U.S.	Director	0%	0%
David Quick c/o Oaktree Capital Management, L.P. 333 South Grand Avenue, 28th Floor Los Angeles, CA 90071	U.S.	Director	0%	0%
B. James Ford c/o Oaktree Capital Management, L.P. 333 South Grand Avenue, 28th Floor Los Angeles, CA 90071	U.S.	Director	0%	0%
Stephen Kaplan c/o Oaktree Capital Management, L.P. 333 South Grand Avenue, 28th Floor Los Angeles, CA 90071	U.S.	Director	0%	0%

Regent Broadcasting West Coast, LLC

Name and Address	Citizenship	Positional Interest	Percentage Vote	Percentage of Total Assets (debt plus equity)
Regent Broadcasting West Coast, LLC c/o Oaktree Capital Management, L.P. Attn: Andrew Salter 333 South Grand Avenue, 28th Floor Los Angeles, CA 90071	Delaware Limited Liability Company	N/A	N/A	N/A
Townsquare Media Broadcasting, LLC c/o Oaktree Capital Management, L.P. Attn: Andrew Salter 333 South Grand Avenue, 28th Floor Los Angeles, CA 90071	Delaware Limited Liability Company	Sole Member	100%	100%
Steven Price c/o FiveWire Ventures, LLC 60 Arch Street Greenwich, CT 06830	U.S.	Chairman of the Board, President, CEO and Manager	0%	0%
Stuart Rosenstein c/o FiveWire Ventures, LLC 60 Arch Street Greenwich, CT 06830	U.S.	Executive Vice President and CFO	0%	0%
John King c/o Regent Communications, Inc. 2000 Fifth Third Center, 511 Walnut Street Cincinnati, OH 45202	U.S.	Senior Vice President	0%	0%
Robert E. Allen, Jr. c/o Regent Communications, Inc. 2000 Fifth Third Center, 511 Walnut Street Cincinnati, OH 45202	U.S.	Vice President - Finance & Accounting and Treasurer	0%	0%
Matthew A. Yeoman c/o Regent Communications, Inc. 2000 Fifth Third Center, 511 Walnut Street Cincinnati, OH 45202	U.S.	Vice President – Operations and Assistant Secretary	0%	0%
Ginger Scherbarth c/o Regent Communications, Inc. 2000 Fifth Third Center, 511 Walnut Street Cincinnati, OH 45202	U.S.	Secretary	0%	0%
Andrew Salter c/o Oaktree Capital Management, L.P. 333 South Grand Avenue, 28th Floor Los Angeles, CA 90071	U.S.	Manager	0%	0%
David Quick c/o Oaktree Capital Management, L.P. 333 South Grand Avenue, 28th Floor Los Angeles, CA 90071	U.S.	Manager	0%	0%

Name and Address	Citizenship	Positional Interest	Percentage Vote	Percentage of Total Assets (debt plus equity)
B. James Ford c/o Oaktree Capital Management, L.P. 333 South Grand Avenue, 28th Floor Los Angeles, CA 90071	U.S.	Manager	0%	0%
Stephen Kaplan c/o Oaktree Capital Management, L.P. 333 South Grand Avenue, 28th Floor Los Angeles, CA 90071	U.S.	Manager	0%	0%

Townsquare Media Broadcasting, LLC

Name and Address	Citizenship	Positional Interest	Percentage Vote	Percentage of Total Assets (debt plus equity)
Townsquare Media Broadcasting, LLC c/o Oaktree Capital Management, L.P. Attn: Andrew Salter 333 South Grand Avenue, 28th Floor Los Angeles, CA 90071	Delaware Limited Liability Company	N/A	N/A	N/A
Townsquare Media, Inc. c/o Oaktree Capital Management, L.P. Attn: Andrew Salter 333 South Grand Avenue, 28th Floor Los Angeles, CA 90071	Delaware Corporation	Sole Member	100%	26.8%
Steven Price c/o FiveWire Ventures, LLC 60 Arch Street Greenwich, CT 06830	U.S.	Chairman of the Board, CEO, President and Manager	0%	0%
Stuart Rosenstein c/o FiveWire Ventures, LLC 60 Arch Street Greenwich, CT 06830	U.S.	Executive Vice President and Chief Financial Officer	0%	0%
John King c/o Regent Communications, Inc. 2000 Fifth Third Center, 511 Walnut Street Cincinnati, OH 45202	U.S.	Senior Vice President	0%	0%
Robert E. Allen, Jr. c/o Regent Communications, Inc. 2000 Fifth Third Center, 511 Walnut Street Cincinnati, OH 45202	U.S.	Vice President - Finance & Accounting and Treasurer	0%	0%
Matthew A. Yeoman c/o Regent Communications, Inc. 2000 Fifth Third Center, 511 Walnut Street Cincinnati, OH 45202	U.S.	Vice President-Operations and Assistant Secretary	0%	0%
Ginger Scherbarth c/o Regent Communications, Inc. 2000 Fifth Third Center, 511 Walnut Street Cincinnati, OH 45202	U.S.	Secretary	0%	0%
Andrew Salter c/o Oaktree Capital Management, L.P. 333 South Grand Avenue, 28th Floor Los Angeles, CA 90071	U.S.	Manager	0%	0%
David Quick c/o Oaktree Capital Management, L.P. 333 South Grand Avenue, 28th Floor Los Angeles, CA 90071	U.S.	Manager	0%	0%

Name and Address	Citizenship	Positional Interest	Percentage Vote	Percentage of Total Assets (debt plus equity)
B. James Ford c/o Oaktree Capital Management, L.P. 333 South Grand Avenue, 28th Floor Los Angeles, CA 90071	U.S.	Manager	0%	0%
Stephen Kaplan c/o Oaktree Capital Management, L.P. 333 South Grand Avenue, 28th Floor Los Angeles, CA 90071	U.S.	Manager	0%	0%

Townsquare Media, Inc.

Name and Address	Citizenship	Positional Interest	Percentage Vote	Percentage of Total Assets (debt plus equity)
Townsquare Media, Inc. c/o Oaktree Capital Management, L.P. Attn: Andrew Salter 333 South Grand Avenue, 28th Floor Los Angeles, CA 90071	Delaware Corporation	N/A	N/A	N/A
Townsquare Management Company, LLC c/o Oaktree Capital Management, L.P. Attn: Andrew Salter 333 South Grand Avenue, 28th Floor Los Angeles, CA 90071	Delaware Limited Liability Company	Sole Shareholder	100%	100%
Steven Price c/o FiveWire Ventures, LLC 60 Arch Street Greenwich, CT 06830	U.S.	Chairman of the Board, President, CEO and Director	0%	0%
Stuart Rosenstein c/o FiveWire Ventures, LLC 60 Arch Street Greenwich, CT 06830	U.S.	Executive Vice President and CFO	0%	0%
John King c/o Regent Communications, Inc. 2000 Fifth Third Center, 511 Walnut Street Cincinnati, OH 45202	U.S.	Senior Vice President	0%	0%
Robert E. Allen, Jr. c/o Regent Communications, Inc. 2000 Fifth Third Center, 511 Walnut Street Cincinnati, OH 45202	U.S.	Vice President - Finance & Accounting and Treasurer	0%	0%
Matthew A. Yeoman c/o Regent Communications, Inc. 2000 Fifth Third Center, 511 Walnut Street Cincinnati, OH 45202	U.S.	Vice President – Operations	0%	0%
Robert A. Moody c/o Regent Communications, Inc. 2000 Fifth Third Center, 511 Walnut Street Cincinnati, OH 45202	U.S.	Vice President of Programming	0%	0%
David J. Remund c/o Regent Communications, Inc. 2000 Fifth Third Center, 511 Walnut Street Cincinnati, OH 45202	U.S.	Vice President of Engineering	0%	0%
Ginger Scherbarth c/o Regent Communications, Inc. 2000 Fifth Third Center, 511 Walnut Street Cincinnati, OH 45202	U.S.	Director - Human Resources and Secretary	0%	0%

Name and Address	Citizenship	Positional Interest	Percentage Vote	Percentage of Total Assets (debt plus equity)
Robert J. Ausfeld c/o Regent Communications, Inc. 2000 Fifth Third Center, 511 Walnut Street Cincinnati, OH 45202	U.S.	Regional Vice President	0%	0%
Michael Grimsley c/o Regent Communications, Inc. 2000 Fifth Third Center, 511 Walnut Street Cincinnati, OH 45202	U.S.	Regional Vice President	0%	0%
Mark Thomas c/o Regent Communications, Inc. 2000 Fifth Third Center, 511 Walnut Street Cincinnati, OH 45202	U.S.	Regional Vice President	0%	0%
Andrew Salter c/o Oaktree Capital Management, L.P. 333 South Grand Avenue, 28th Floor Los Angeles, CA 90071	U.S.	Director	0%	0%
David Quick c/o Oaktree Capital Management, L.P. 333 South Grand Avenue, 28th Floor Los Angeles, CA 90071	U.S.	Director	0%	0%
B. James Ford c/o Oaktree Capital Management, L.P. 333 South Grand Avenue, 28th Floor Los Angeles, CA 90071	U.S.	Director	0%	0%
Stephen Kaplan c/o Oaktree Capital Management, L.P. 333 South Grand Avenue, 28th Floor Los Angeles, CA 90071	U.S.	Director	0%	0%

Townsquare Management Company, LLC

Name and Address	Citizenship	Positional Interest	Percentage Vote	Percentage of Total Assets (debt plus equity)
Townsquare Management Company, LLC c/o Oaktree Capital Management, L.P. Attn: Andrew Salter 333 South Grand Avenue, 28th Floor Los Angeles, CA 90071	Delaware Limited Liability Company	N/A	N/A	N/A
Townsquare Media, LLC c/o Oaktree Capital Management, L.P. Attn: Andrew Salter 333 South Grand Avenue, 28th Floor Los Angeles, CA 90071	Delaware Limited Liability Company	Sole Member	100%	100%
Steven Price c/o FiveWire Ventures, LLC 60 Arch Street Greenwich, CT 06830	U.S.	President, Chief Executive Officer and Manager	0%	0%
Stuart Rosenstein c/o FiveWire Ventures, LLC 60 Arch Street Greenwich, CT 06830	U.S.	Executive Vice President and Chief Financial Officer	0%	0%
Andrew Salter c/o Oaktree Capital Management, L.P. 333 South Grand Avenue, 28th Floor Los Angeles, CA 90071	U.S.	Manager	0%	0%
David Quick c/o Oaktree Capital Management, L.P. 333 South Grand Avenue, 28th Floor Los Angeles, CA 90071	U.S.	Manager	0%	0%
B. James Ford c/o Oaktree Capital Management, L.P. 333 South Grand Avenue, 28th Floor Los Angeles, CA 90071	U.S.	Manager	0%	0%
Stephen Kaplan c/o Oaktree Capital Management, L.P. 333 South Grand Avenue, 28th Floor Los Angeles, CA 90071	U.S.	Manager	0%	0%

Townsquare Media, LLC

Name and Address	Citizenship	Positional Interest	Percentage Vote	Percentage of Total Assets (debt plus equity)
Townsquare Media, LLC c/o Oaktree Capital Management, L.P. Attn: Andrew Salter 333 South Grand Avenue, 28th Floor Los Angeles, CA 90071	Delaware Limited Liability Company	N/A	N/A	N/A
OCM Principal Opportunities Fund IV AIF (Delaware), L.P. c/o Oaktree Capital Management, L.P. 333 South Grand Avenue, 28th Floor Los Angeles, CA 90071	Delaware Limited Partnership	Sole Voting Member	100%	100%
Steven Price c/o FiveWire Ventures, LLC 60 Arch Street Greenwich, CT 06830	U.S.	President, Chief Executive Officer and Manager	0%	0%
Stuart Rosenstein c/o FiveWire Ventures, LLC 60 Arch Street Greenwich, CT 06830	U.S.	Executive Vice President and Chief Financial Officer	0%	0%
Andrew Salter c/o Oaktree Capital Management, L.P. 333 South Grand Avenue, 28th Floor Los Angeles, CA 90071	U.S.	Manager	0%	0%
David Quick c/o Oaktree Capital Management, L.P. 333 South Grand Avenue, 28th Floor Los Angeles, CA 90071	U.S.	Manager	0%	0%
B. James Ford c/o Oaktree Capital Management, L.P. 333 South Grand Avenue, 28th Floor Los Angeles, CA 90071	U.S.	Manager	0%	0%
Stephen Kaplan c/o Oaktree Capital Management, L.P. 333 South Grand Avenue, 28th Floor Los Angeles, CA 90071	U.S.	Manager	0%	0%

OCM Principal Opportunities Fund IV AIF (Delaware), L.P.

Name and Address	Citizenship	Positional Interest	Percentage Vote	Percentage of Total Assets (debt plus equity)
OCM Principal Opportunities Fund IV AIF (Delaware), L.P. c/o Oaktree Capital Management, L.P. 333 South Grand Avenue, 28th Floor Los Angeles, CA 90071	Delaware Limited Partnership	N/A	N/A	N/A
Oaktree Fund AIF Series, L.P. – Series B c/o Oaktree Capital Management, L.P. 333 South Grand Avenue, 28 th Floor Los Angeles, CA 90071	Delaware Limited Partnership	General Partner	100%	2%

Oaktree Fund AIF Series, L.P. – Series B

Name and Address	Citizenship	Positional Interest	Percentage Vote	Percentage of Total Assets (debt plus equity)
Oaktree Fund AIF Series, L.P. c/o Oaktree Capital Management, L.P. 333 South Grand Avenue, 28th Floor Los Angeles, CA 90071	Delaware Limited Partnership	N/A	N/A	N/A
Oaktree Fund GP AIF, LLC c/o Oaktree Capital Management, L.P. 333 South Grand Avenue, 28 th Floor Los Angeles, CA 90071	Delaware Limited Liability Company	General Partner	100%	0%
Oaktree Fund GP III, L.P. c/o Oaktree Capital Management, L.P. 333 South Grand Avenue, 28 th Floor Los Angeles, CA 90071	Delaware Limited Partnership	Limited Partner	0%	100%

Oaktree Fund GP AIF, LLC

Name and Address	Citizenship	Positional Interest	Percentage Vote	Percentage of Total Assets (debt plus equity)
Oaktree Fund GP AIF, LLC c/o Oaktree Capital Management, L.P. 333 South Grand Avenue, 28th Floor Los Angeles, CA 90071	Delaware Limited Liability Company	N/A	N/A	N/A
Oaktree Fund GP III, L.P. c/o Oaktree Capital Management, L.P. 333 South Grand Avenue, 28 th Floor Los Angeles, CA 90071	Delaware Limited Partnership	Sole Member	100%	100%
Todd Molz c/o Oaktree Capital Management, L.P. 333 South Grand Avenue, 28 th Floor Los Angeles, CA 90071	U.S.	Secretary	0%	0%

Oaktree Fund GP III, L.P.

Name and Address	Citizenship	Positional Interest	Percentage Vote	Percentage of Total Assets (debt plus equity)
Oaktree Fund GP III, L.P. c/o Oaktree Capital Management, L.P. 333 South Grand Avenue, 28th Floor Los Angeles, CA 90071	Delaware Limited Partnership	N/A	N/A	N/A
Oaktree AIF Investments, L.P. c/o Oaktree Capital Management, L.P. 333 South Grand Avenue, 28 th Floor Los Angeles, CA 90071	Delaware Limited Partnership	General Partner	100%	50-65%*

*Oaktree AIF Investments, L.P. has an ownership interest in Oaktree Fund GP III, L.P. as a general partner, and certain investment professionals who are employees of Oaktree have an ownership interest as limited partners. These investment professionals receive their incentive compensation in the underlying investment funds through Oaktree Fund GP III, L.P., and the percentage of assets and equity attributable to the investment professionals (and, correspondingly, to Oaktree AIF Investments, L.P., the general partner) vary as new funds are added underneath and old funds liquidate. Moreover, different investment professionals have interests that are separated into different series designations, making a single percentage difficult to calculate. Accordingly, the data set forth in the table above is provided as a range.

Oaktree AIF Investments, L.P.

Name and Address	Citizenship	Positional Interest	Percentage Vote	Percentage of Total Assets (debt plus equity)
Oaktree AIF Investments, L.P. c/o Oaktree Capital Management, L.P. 333 South Grand Avenue, 28th Floor Los Angeles, CA 90071	Delaware Limited Partnership	N/A	N/A	N/A
Oaktree AIF Holdings, Inc. c/o Oaktree Capital Management, L.P. 333 South Grand Avenue, 28 th Floor Los Angeles, CA 90071	Delaware Corporation	General Partner and Limited Partner	100%	15.17%
Oaktree Capital Group Holdings, L.P. c/o Oaktree Capital Management, L.P. 333 South Grand Avenue, 28 th Floor Los Angeles, CA 90071	Delaware Limited Partnership	Limited Partner	0%	84.83%
Howard Marks c/o Oaktree Capital Management, L.P. 333 South Grand Avenue, 28 th Floor Los Angeles, CA 90071	U.S.	Chairman	0%	0%
Bruce Karsh c/o Oaktree Capital Management, L.P. 333 South Grand Avenue, 28 th Floor Los Angeles, CA 90071	U.S.	President	0%	0%
John Frank c/o Oaktree Capital Management, L.P. 333 South Grand Avenue, 28 th Floor Los Angeles, CA 90071	U.S.	Managing Principal	0%	0%
David Kirchheimer c/o Oaktree Capital Management, L.P. 333 South Grand Avenue, 28 th Floor Los Angeles, CA 90071	U.S.	Chief Financial Officer	0%	0%
Todd Molz c/o Oaktree Capital Management, L.P. 333 South Grand Avenue, 28 th Floor Los Angeles, CA 90071	U.S.	General Counsel and Secretary	0%	0%
Richard Ting c/o Oaktree Capital Management, L.P. 333 South Grand Avenue, 28 th Floor Los Angeles, CA 90071	U.S.	Associate General Counsel and Assistant Secretary	0%	0%
Lisa Arakaki c/o Oaktree Capital Management, L.P. 333 South Grand Avenue, 28 th Floor Los Angeles, CA 90071	U.S.	Senior Vice President and Assistant Secretary	0%	0%

Name and Address	Citizenship	Positional Interest	Percentage Vote	Percentage of Total Assets (debt plus equity)
Emily Alexander c/o Oaktree Capital Management, L.P. 333 South Grand Avenue, 28 th Floor Los Angeles, CA 90071	U.S.	Senior Vice President and Assistant Secretary	0%	0%
Martin Boskovich c/o Oaktree Capital Management, L.P. 333 South Grand Avenue, 28 th Floor Los Angeles, CA 90071	U.S.	Vice President and Assistant Secretary	0%	0%
Shawn Haghighi c/o Oaktree Capital Management, L.P. 333 South Grand Avenue, 28 th Floor Los Angeles, CA 90071	U.S.	Vice President and Assistant Secretary	0%	0%

Oaktree AIF Holdings, Inc.

Name and Address	Citizenship	Positional Interest	Percentage Vote	Percentage of Total Assets (debt plus equity)
Oaktree AIF Holdings, Inc. c/o Oaktree Capital Management, L.P. 333 South Grand Avenue, 28th Floor Los Angeles, CA 90071	Delaware Corporation	N/A	N/A	N/A
Oaktree Capital Group Holdings, L.P. c/o Oaktree Capital Management, L.P. 333 South Grand Avenue, 28 th Floor Los Angeles, CA 90071	Delaware Limited Partnership	Sole Voting Shareholder	100%	0%
Howard Marks c/o Oaktree Capital Management, L.P. 333 South Grand Avenue, 28 th Floor Los Angeles, CA 90071	U.S.	Co-President	0%	0%
Bruce Karsh c/o Oaktree Capital Management, L.P. 333 South Grand Avenue, 28 th Floor Los Angeles, CA 90071	U.S.	Co-President	0%	0%
Todd Molz c/o Oaktree Capital Management, L.P. 333 South Grand Avenue, 28 th Floor Los Angeles, CA 90071	U.S.	Vice President, Secretary and Sole Director	0%	0%
John Edwards c/o Oaktree Capital Management, L.P. 333 South Grand Avenue, 28 th Floor Los Angeles, CA 90071	U.S.	Vice President and Treasurer	0%	0%
Richard Ting c/o Oaktree Capital Management, L.P. 333 South Grand Avenue, 28 th Floor Los Angeles, CA 90071	U.S.	Vice President and Assistant Secretary	0%	0%
Lisa Arakaki c/o Oaktree Capital Management, L.P. 333 South Grand Avenue, 28 th Floor Los Angeles, CA 90071	U.S.	Vice President and Assistant Secretary	0%	0%
Jeff Arnold c/o Oaktree Capital Management, L.P. 333 South Grand Avenue, 28 th Floor Los Angeles, CA 90071	U.S.	Vice President and Assistant Secretary	0%	0%
Emily Alexander c/o Oaktree Capital Management, L.P. 333 South Grand Avenue, 28 th Floor Los Angeles, CA 90071	U.S.	Vice President and Assistant Secretary	0%	0%

Name and Address	Citizenship	Positional Interest	Percentage Vote	Percentage of Total Assets (debt plus equity)
Martin Boskovich c/o Oaktree Capital Management, L.P. 333 South Grand Avenue, 28 th Floor Los Angeles, CA 90071	U.S.	Vice President and Assistant Secretary	0%	0%
Shawn Haghighi c/o Oaktree Capital Management, L.P. 333 South Grand Avenue, 28 th Floor Los Angeles, CA 90071	U.S.	Vice President and Assistant Secretary	0%	0%

Oaktree Capital Group Holdings, L.P.

Name and Address	Citizenship	Positional Interest	Percentage Vote	Percentage of Total Assets (debt plus equity)
Oaktree Capital Group Holdings, L.P. c/o Oaktree Capital Management, L.P. 333 South Grand Avenue, 28th Floor Los Angeles, CA 90071	Delaware Limited Partnership	N/A	N/A	N/A
Oaktree Capital Group Holdings GP, LLC c/o Oaktree Capital Management, L.P. 333 South Grand Avenue, 28 th Floor Los Angeles, CA 90071	Delaware Limited Liability Company	General Partner	100%	0%
John Frank c/o Oaktree Capital Management, L.P. 333 South Grand Avenue, 28 th Floor Los Angeles, CA 90071	U.S.	Limited Partner	0%	<1%
Stephen Kaplan c/o Oaktree Capital Management, L.P. 333 South Grand Avenue, 28 th Floor Los Angeles, CA 90071	U.S.	Limited Partner	0%	<1%
Bruce Karsh c/o Oaktree Capital Management, L.P. 333 South Grand Avenue, 28 th Floor Los Angeles, CA 90071	U.S.	Limited Partner	0%	<1%
David Kirchheimer c/o Oaktree Capital Management, L.P. 333 South Grand Avenue, 28 th Floor Los Angeles, CA 90071	U.S.	Limited Partner	0%	<1%
Howard Marks c/o Oaktree Capital Management, L.P. 333 South Grand Avenue, 28 th Floor Los Angeles, CA 90071	U.S.	Limited Partner	0%	<1%
Kenneth Liang c/o Oaktree Capital Management, L.P. 333 South Grand Avenue, 28 th Floor Los Angeles, CA 90071	U.S.	Limited Partner	0%	<1%

Oaktree Capital Group Holdings GP, LLC**

Name and Address	Citizenship	Positional Interest	Percentage Vote	Percentage of Total Assets (debt plus equity)
Oaktree Capital Group Holdings GP, LLC c/o Oaktree Capital Management, L.P. 333 South Grand Avenue, 28th Floor Los Angeles, CA 90071	Delaware Limited Liability Company	N/A	N/A	N/A
Howard Marks c/o Oaktree Capital Management, L.P. 333 South Grand Avenue, 28 th Floor Los Angeles, CA 90071	U.S.	Member, Manager and Chairman	20%	0%
Bruce Karsh c/o Oaktree Capital Management, L.P. 333 South Grand Avenue, 28 th Floor Los Angeles, CA 90071	U.S.	Member, Manager and President	20%	0%
John Frank c/o Oaktree Capital Management, L.P. 333 South Grand Avenue, 28 th Floor Los Angeles, CA 90071	U.S.	Member, Manager and Managing Principal	20%	0%
David Kirchheimer c/o Oaktree Capital Management, L.P. 333 South Grand Avenue, 28 th Floor Los Angeles, CA 90071	U.S.	Member, Manager, Chief Financial Officer and Chief Administrative Officer	20%	0%
Stephen Kaplan c/o Oaktree Capital Management, L.P. 333 South Grand Avenue, 28 th Floor Los Angeles, CA 90071	U.S.	Member, Manager and Principal	20%	0%
Todd Molz c/o Oaktree Capital Management, L.P. 333 South Grand Avenue, 28 th Floor Los Angeles, CA 90071	U.S.	Managing Director and General Counsel	0%	0%

** Oaktree Capital Group Holdings GP, LLC (“Oaktree GP LLC”) has voting and non-voting members. The operating agreement of Oaktree GP LLC includes the Commission’s insulating language with respect to the non-voting members and with respect to certain voting members for media matters. The operating agreement establishes a Media Company Committee comprised of the voting members listed above. Each member of the Media Company Committee has an equal one-fifth (1/5) vote. Voting members of Oaktree GP LLC who do not serve on the Media Company Committee are considered insulated members for purposes of any media investment. In addition, notwithstanding any other provision of the operating agreement, these insulated voting members may not vote for the removal of any member of the Media Company Committee except as expressly permitted under the Commission’s insulated member requirements. For the purposes of non-media related investments, all voting members of Oaktree GP LLC are permitted to vote with the percentage of all such members’ voting rights governed by Oaktree GP LLC’s operating agreement.

Because Oaktree GP LLC does not hold any equity interest in Oaktree Capital Group Holdings, L.P., each member does not hold any indirect equity interest in the Regent entities through Oaktree GP LLC.