

APPLICATION FOR AUTHORITY TO MAKE  
MINOR MODIFICATIONS TO THE WINQ-CA  
CHANNEL 43 (-) CLASS A TELEVISION  
BROADCAST STATION CONSTRUCTION  
PERMIT IN THE VICINITY OF  
PALM BEACH, FLORIDA  
*(BILL BROTHERS)*

KESSLER & GEHMAN ASSOCIATES, INC.  
TELECOMMUNICATIONS CONSULTING ENGINEERS

20020708

*Prepared by William T. Godfrey*

*KG&A*

507 N.W. 60th Street, Suite C  
Gainesville, Florida 32607

**ENGINEERING TECHNICAL STATEMENT PREPARED BY WILLIAM T. GODFREY OF THE FIRM KESSLER AND GEHMAN ASSOCIATES, INC., TELECOMMUNICATIONS CONSULTING ENGINEERS IN CONNECTION WITH AN APPLICATION FOR AUTHORITY TO MAKE CHANGES IN THE CLASS A TELEVISION BROADCAST STATION WINQ-CA CHANNEL 43, PALM BEACH, FLORIDA (FCC FORM 301-CA).**

**BRIEF SUMMARY OF PROPOSAL**

The firm Kessler and Gehman Associates, Inc., has been retained by William Brothers in order to prepare engineering studies and the engineering portion of an application for authority to make changes in a Class A television broadcast station (FCC Form 301-CA). The enclosed application requests authority to make the following minor changes to the WINQ-CA construction permit (BMPTTA20011123AAA): 1) 18.4 meter (60.4 feet) reduction in antenna height; and 2) change antenna and antenna pattern from an Andrew model ALP32L0 directional (cardioid) to a Superior Broadcast Products model UP-10-SPN directional (peanut). All other parameters shall remain unchanged and in accordance with the existing WINQ-CA Channel 43- construction permit.

William Brothers is requesting a waiver of the interference rules to make full use of terrain shielding and Longley-Rice terrain dependent propagation prediction methods to demonstrate that the proposed facility would not be likely to cause interference to TV broadcast stations.

§73.3572(a)(2) defines a major change as any change in; i) frequency (output channel), except a change in offset carrier frequency; or ii) transmitting antenna location where the protected contour resulting from the change is not predicted to overlap any portion of the protected contour based on the station's authorized facilities. §73.3572(a)(3) defines a minor change to be all other changes. Since this application does not propose a change in frequency and does propose to overlap most of the authorized WINQ-CA protected contour (see Exhibit 11), it is considered, and shall be filed as, a minor modification application.

**DISCUSSION**

William Brothers was recently granted a construction permit (BMPTTA20011123AAA) to operate WINQ-CA on UHF, analog Channel 43 (- offset) with an ERP of 150 kW at an antenna height radiation center of 297.8 meters above average terrain ("AAT") in the vicinity of Palm Beach, FL. The American Netcom, Inc. ("ANI"), which is commonly owned by William Brothers, has a displacement application on file with the FCC (BMJPTTA20020613AAL) requesting a grant to operate the WTCN-CA facility on Channel 48.

Recently, it was determined that the WTCN facility was receiving excessive interference and accordingly, ANI submitted a displacement application requesting authority to depart from the licensed Channel 15 to Channel 48. A displacement application was also submitted and granted for the WINQ facility to depart from Channel 19 and operate on Channel 43. Since it is proposed for the WINQ-CA (CP) and WTCN-CA (APP) facilities to be co-located on the same American Tower-owned support structure and since new antennas will have to be purchased in order to operate on the new frequencies, William Brothers determined that the best plan of action would be to reduce the antenna height of the WINQ-CA (CP) facility from 297.9 meters above ground level ("AGL") down to the WTCN antenna height radiation center height AGL of 279.5 meters so that both facilities could diplex from the same broadband antenna. Obviously, the displacement expenses would be significantly reduced if William Brothers went with one broadband antenna and shared transmission line. The cost of two antennas, transmission lines, and tower

strengthening, resulting from additional equipment mounted on the support structure, would be enormous and an unwelcome burden.

Therefore, William Brothers respectfully seeks authority to make minor changes to the WINQ-CA CP by reducing the authorized antenna height by 18.4 meters (60.4 feet) and by changing antennas from an Andrew model ALP32L0 directional (cardioid) to a Superior Broadcast Products model UP-10-SPN directional (peanut). By applying the proposed minor changes, the WINQ-CA Channel 43 antenna height and antenna type will perfectly match the co-located WTCN-CA Channel 48 antenna height and antenna type and therefore, will be able to diplex from the same broadband antenna.

### ATTACHED FIGURES

The following list is an index of enclosed figures produced by calculations and engineering studies of the proposed WINQ-CA Channel 43-.

- 1) Exhibit 1 – Engineering Specifications
- 2) Exhibit 2 – Antenna Data
- 3) Exhibit 3 – Elevation View of Support Structure
- 4) Exhibit 4 – Azimuth Pattern
- 5) Exhibit 5 – Azimuth Pattern Tabulation
- 6) Exhibit 6 – Elevation Pattern (2° above to 5° below)
- 7) Exhibit 7 – Elevation Pattern (5° above to 20° below)
- 8) Exhibit 8 – ERP/dBk Pattern
- 9) Exhibit 9 – Site Plotted on Top Map
- 10) Exhibit 10 – FCC Service Contour Plotted for WINQ-CA CH 43-
- 11) Exhibit 11 – Overlap Compliance Exhibit
- 12) Exhibit 12 – Low Power TV Studies
- 13) Exhibit 13 – Longley-Rice Interference Studies (WINQ-CA Channel 43- Interference Studies (Pertains to Exhibits 4 – 6 in FCC Form 301-CA / Exhibits 1 -3 in Form 301-CA are not applicable for engineering).

### INTERFERENCE STUDIES

Item number 11, row 1, contained in the Certification section of the enclosed application pertains to Analog TV broadcast station protection in accordance with 47 C.F.R. § 73.6011. This section basically explains how Class A TV stations must protect authorized TV broadcast stations, applications for minor changes in authorized TV broadcast stations and applications for new TV broadcast stations in accordance with the requirements specified in §74.705, titled TV broadcast analog station protection. §74.705(b)(1) explains that an application to change the facilities of an existing station will not be accepted if it specifies a site which is within the protected contour of a co-channel or first adjacent channel TV broadcast station. Our TV interference and spacing study analysis (Exhibit 13) identified the proposed WINQ-CA Channel 43 facility as a station inside the Grade B contour of the WFLX-TV adjacent channel station (Channel 42). Therefore, the proposal does not comply with §74.705(b)(1). Part d of §74.705 also requires a low power TV application to meet the ratio in dB of its field strength to TV broadcast stations at the protected contour. Exhibit 12 is a LPTV study and identifies all stations that the proposed WINQ-CA CH 43 facility would be short-spaced with (contour overlap). As you can see by referring to Exhibit 12, the proposed facility would be short-spaced with WFLX-TV, WXEL-TV and WOTF-TV and therefore, does not comply with §74.705(d). However, §74.705(e) states that an applicant for a low power TV may

request a waiver of the interference rules and make full use of terrain shielding and Longley-Rice terrain dependent propagation prediction methods to demonstrate that the proposed facility would not be likely to cause interference to TV broadcast stations. Therefore, William Brothers is requesting a waiver of the FCC Rules in order to make full use of terrain shielding and Longley-Rice terrain dependent propagation prediction methods. Accordingly, we have checked the "No" radio button in the Certification portion of the application since a waiver is being requested.

Since it was determined that short-spacing did exist, we performed a Longley-Rice study using a Sun Microsystems SPARC 5 computer work station loaded with the FCC's TV Interference and Spacing Analysis software (See Exhibit 13). Exhibit 13 depicts the detailed Longley-Rice interference studies. As you can see, the proposed WINQ-CA Channel 43- would not cause more than 0.5% interference to any station. The Low Power TV Study indicated that short-spacings existed with WFLX-TV, WXEL-TV and WOFT-TV. Apparently, at some point in time WBSF changed call signs to WOFT and as a result, the Low Power TV Studies reflect the WOFT call sign and the Longley-Rice studies reflect the WBSF call sign. This is not a problem though because the true parameters are used regardless of call sign. As you can see by viewing the Longley-Rice study exhibits, the proposed WINQ-CA facility is predicted to cause no more than 0.4% interference to WBSF (WOFT). The FCC Rules state that Class A station interference cannot decrease population in the NTSC service area by more than 0.5%, therefore, the proposed WINQ-CA Channel 43- facility complies with the Class A protection to NTSC Rules with respect to WBSF (WOFT) and all other applicable surrounding stations.

Item number 11, row 2, contained in the Certification section of the application pertains to Digital TV station and DTV Table of Allotments protection in accordance with 47 C.F.R. Section 73.6013. This section explains how Class A TV stations must protect the DTV service that would be provided by the facilities specified in the DTV Table of Allotments in §73.622 and by applications that propose to expand DTV stations' allotted or authorized coverage contour in any direction. The interference analysis is based on the methods described in §73.623(c)(2) through (c)(4), except that a Class A TV station must not cause a loss of service to 0.5 percent or more of the population predicted to receive service from the DTV allotment, station or application. As you can see by referring to the Longley-Rice interference studies (Exhibit 13), this application complies with the rules established to protect DTV stations from Class A stations. This application proposes parameters that are predicted to not cause more than 0.4% interference to any station.

Item number 11, row 3, contained in the Certification section of the application pertains to Low Power TV, TV translator, Class A, and Digital Class A station protection in accordance with 47 C.F.R. Sections 73.6012 (Protection of Class A TV, low power TV and TV translator stations) and 73.6014 (Protection of digital Class A TV stations). §73.6012 states that application to change the facilities of an existing Class A TV station will not be accepted if it fails to protect other authorized Class A TV, low power TV and TV translator stations and applications for changes in such stations filed prior to the date the Class A application is filed, pursuant to the requirements specified in §74.707 of the FCC Rules. Part d of §74.707 requires a low power TV application to meet the ratio in dB of its field strength to authorized low power TV stations at the protected contour. Exhibit 12 is a LPTV study and identifies all LPTV, translator and booster stations that the proposed WINQ-CA CH 43 would be short-spaced with (contour overlap). As you can see by referring to Exhibit 12, the proposed facility would be short-spaced with W32AB and therefore, does not comply with §74.707(d). However, §74.707(e) states that an applicant for a low power TV may request a waiver of the interference rules and make full use of terrain shielding and Longley-Rice terrain dependent propagation prediction methods to demonstrate that the proposed facility would not be likely to cause interference to low power TV, TV translator and TV booster stations. Therefore, William

Brothers requests for a waiver of the FCC Rules to make full use of terrain shielding and Longley-Rice terrain dependent propagation prediction methods also applies for §74.707. Accordingly, we have checked the “No” radio button in the Certification portion of the application since a waiver is being requested.

The Longley-Rice study (Exhibit 13) verifies that the proposed WINQ-CA Channel 43- facility would not cause more than 0.5% interference to W32AB, therefore, this application complies with the Class A protection to low power TV Rules.

§73.6014 pertains to existing Class A TV station changes and the protection authorized to digital Class A TV stations and applications for changes in such stations filed prior to the date the Class A application is filed. The LPTV (Exhibit 12) and Longley-Rice (Exhibit 13) studies verified that there are no Class A short-spacing or interference issues. Therefore, this application complies with the Class A to Class A TV protection rules.

Item number 11, row 4, contained in the Certification section of the enclosed application pertains to Land mobile station protection in accordance with 47 C.F.R. Section 73.6020. The enclosed modification application does not propose to move the site from the construction permit location. Therefore, the application fully complies with protection to Land Mobile.

The FCC Form 301-CA Certification section requires the following: 1) Exhibit 4 explanation of Analog TV broadcast station protection; 2) Exhibit 5 explanation of Digital TV station and DTV Table of Allotments protection; 3) Exhibit 6 explanation of Low Power TV, TV translator, Class A, and Digital Class A station protection; 4) Exhibit 7 explanation of Land mobile station protection; and 5) Exhibit 8 explanation of Environmental Protection Act. The Longley-Rice studies (Exhibit 13) address the aforementioned exhibits 4 through 6 and 8. The Exhibit 7, Land Mobile Protection requirement has already been established since a CP was just granted based on the proposed location. This engineering technical statement addresses the aforementioned Exhibit 8 (Environmental Protection Act).

### TRANSMITTER

It is proposed to top-mount a Superior Broadcast Products model UP-10-SPN, UHF, panel, horizontally polarized, directional (peanut main lobe oriented at N190E°) antenna on the existing support structure owned by American Tower. The tower is registered with the FCC and has a registration number of 1018573. The support structure is located at 3350 Bride Road, Hobe Sound, FL. The proposed antenna height radiation center is 279.5 meters above ground level (“AGL”). The antenna’s highest point will extend to 285.7 meters AGL and the overall height of the structure will extend to 313.6 meters AGL as depicted in Exhibit 3’s elevation view of the support structure.

### ENVIRONMENTAL IMPACT

The proposed construction will have no significant environmental impact as defined in §1.1307 of the FCC Rules. The transmitter, transmission line and antenna system will produce an ERP of 150.0 kW. Assuming that the maximum lobe of radiation is oriented at the base of the tower for WINQ-CA, it will produce a power density six feet above the ground of 0.02823mW/cm<sup>2</sup>. This is only 1.31% of the maximum permissible exposure (MPE) authorized by the American National Standards Institute (ANSI). Since the proposed operation of WINQ-CA Channel 43- would not exceed 5.0% of the MPE limit for population/uncontrolled at any point on the ground, WINQ-CA would not be considered a “significant

contributor” to the RF exposure environment pursuant to OET Bulletin 65, Edition 97-01. Therefore, contributions of exposure from other sources were not accounted for in this analysis. It is safe to conclude that the emissions will be insignificant and well within the maximum allowable requirements. If other antennas are placed on the tower in the future, the applicant will cooperate with those users by reducing or completely terminating the power to the antenna when maintenance workers are in danger from the electromagnetic radiation emanating from the antenna. The tower will be enclosed within a fence with warning signs posted at the locked gate.

#### CERTIFICATION

The applicant accepts full responsibility for the elimination of any objectionable interference including that caused by intermodulation to facilities in existence or authorized prior to the grant of this application.

This technical statement was prepared by William T. Godfrey, Telecommunications Consultant with Kessler and Gehman Associates, Inc. having offices in Gainesville, Florida and has been working in the field of radio and television broadcast consulting since 1998. He graduated from the University of North Florida with a Bachelor of Arts degree in Criminal Justice and a minor in Mathematics and received a Commission in the Aviation Branch of the United States Army in 1993. As a Professional in the field of Telecommunications and as a Captain in the United States Army, he states under penalty of perjury that the information contained in this report is true and correct to the best of his knowledge and belief.



KESSLER AND GEHMAN ASSOCIATES, INC.

A handwritten signature in blue ink, reading 'William T. Godfrey', is written over a horizontal line. The signature is fluid and cursive.

WILLIAM T. GODFREY  
Telecommunications Consultant

July 03, 2002

## ENGINEERING SPECIFICATIONS

## EXHIBIT 1

**WINQ-CA CHANNEL 43-  
PALM BEACH, FLORIDA**

**DATA FOR PROPOSED ANALOG  
DIRECTIONAL TRANSMITTING ANTENNA**

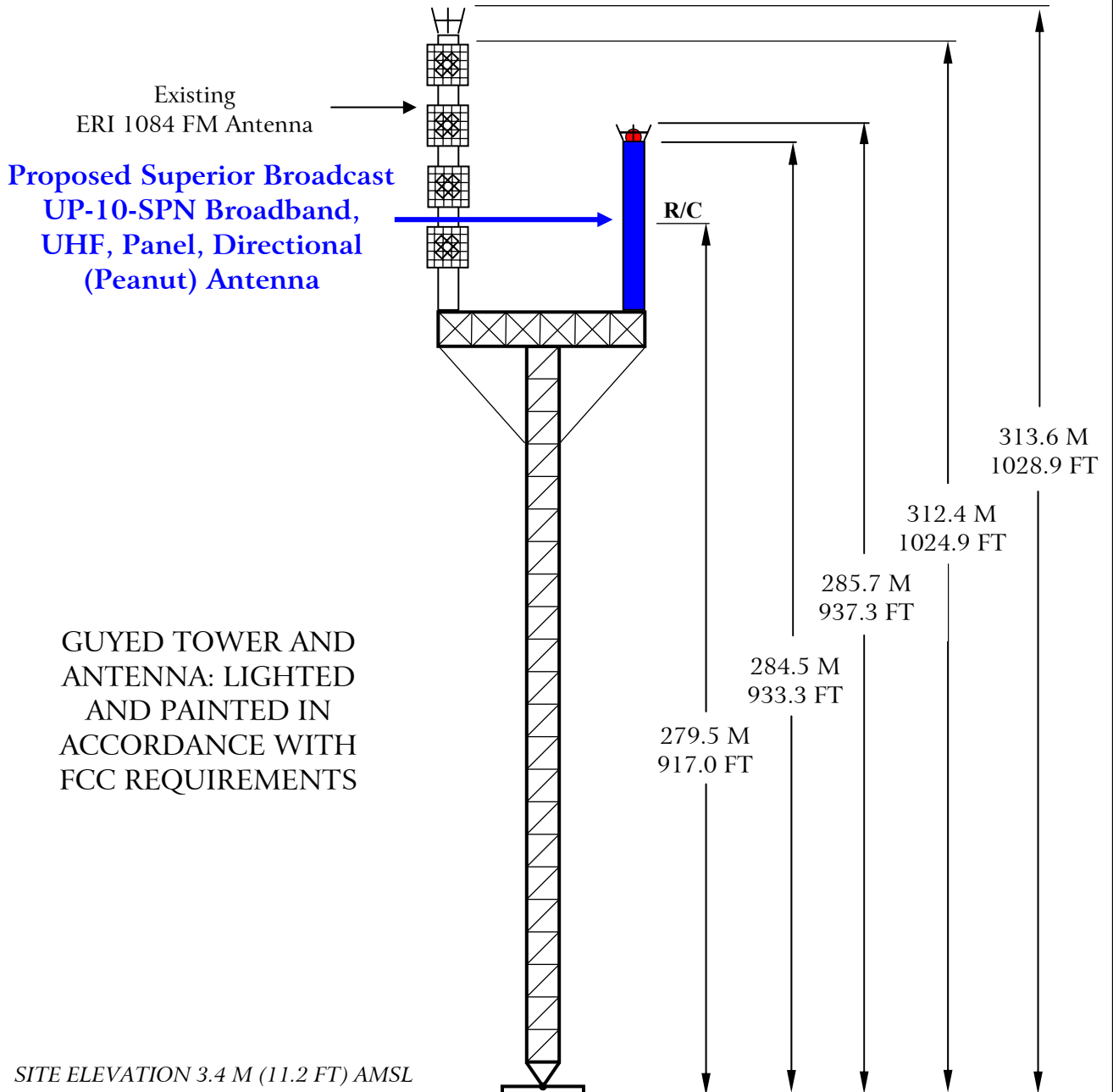
- A. **Antenna:** Superior Broadcast Products Model UP-10-SPN, UHF Panel, Horizontally Polarized, Directional (Peanut) Antenna.
- B. **Electrical Beam Tilt:** None
- C. **Mechanical Beam Tilt:** None.
- D. 

|                                  |                                       |
|----------------------------------|---------------------------------------|
| <b><u>Maximum Power Gain</u></b> | <b><u>Horizontal Polarization</u></b> |
| Maximum:                         | 87.7 (19.43 dB)                       |
| Horizontal:                      | 87.7 (19.43 dB)                       |
- E. **Length:** 32.5 feet (9.9 meters) not including appurtenances.
- F. **Average Power:** 4.70 kW
- G. **Transmission Line:** 3 1/8" 50-ohm Heliax.
- H. **Transmission Line Loss:** 0.426 dB/100-feet
- I. **Total Transmission Line:** 1,030 feet
- J. **Transmission Line Attenuation:** 4.39 dB



## ELEVATION VIEW

(Including all appurtenances)



|                         |         |
|-------------------------|---------|
| OVERALL HEIGHT AGL:     | 313.6 M |
| OVERALL HEIGHT AMSL:    | 317.0 M |
| RADIATION CENTER AGL:   | 279.5 M |
| RADIATION CENTER AMSL:  | 282.9 M |
| RADIATION CENTER AAT    | 279.4 M |
| AVG OF NON-ODD RADIALS: | 3.5 M   |
| SITE HEIGHT AAT:        | 0.5 M   |

NAD27 COORDINATES:  
N. LATITUDE 27° 01' 31.8"  
W. LONGITUDE 80° 10' 42.8"

Antenna Structure Registration Number  
**1018573**

**NOTE: NOT TO SCALE**

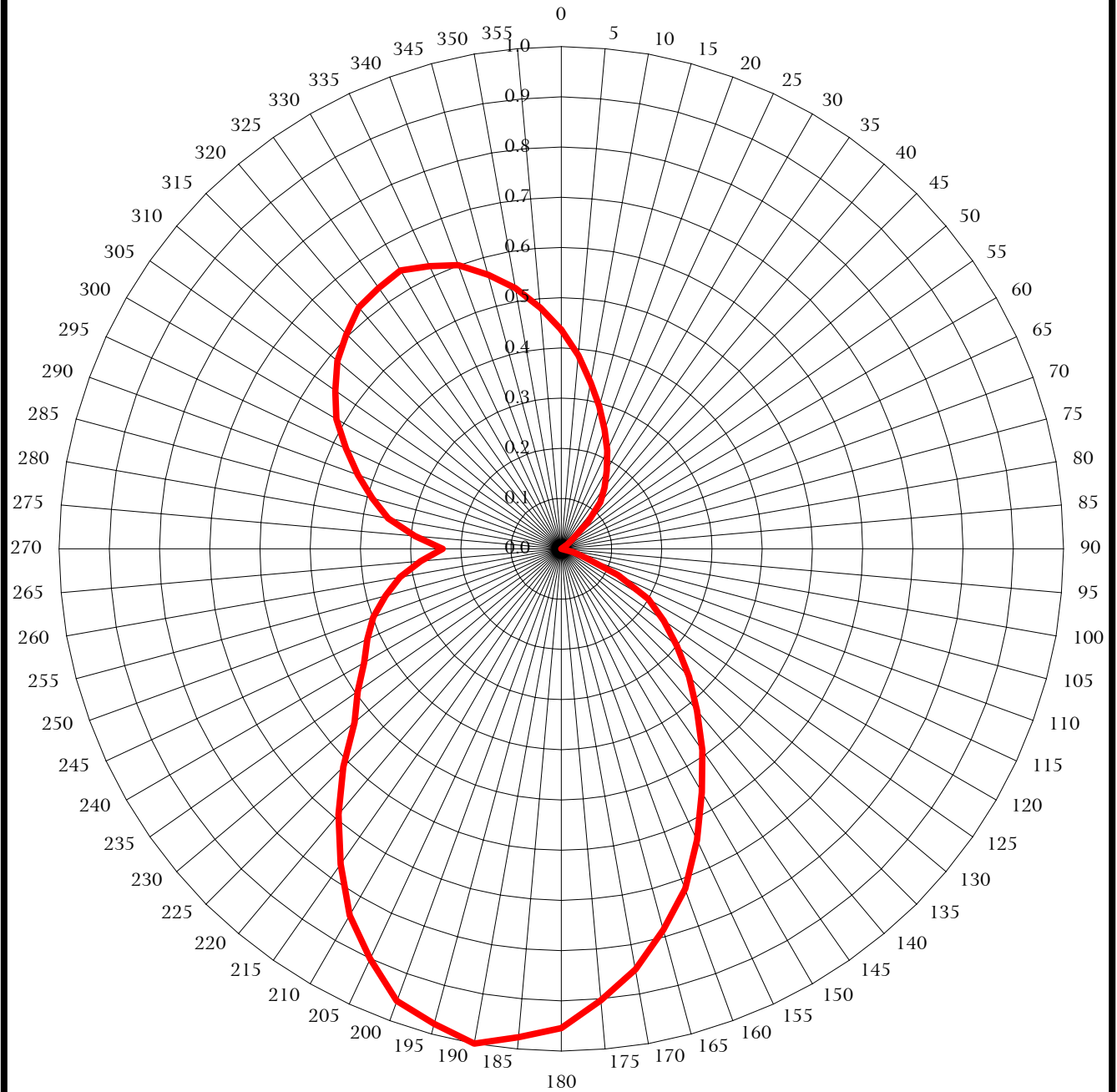
**KESSLER & GEHMAN**  
TELECOMMUNICATIONS CONSULTING ENGINEERS  
507 N.W. 60th Street, Suite C  
Gainesville, Florida 32607

WINQ-CA CHANNEL 43-  
PALM BEACH, FLORIDA

20020702

EXHIBIT 3

# RELATIVE FIELD AZIMUTH PATTERN



**SUPERIOR BROADCAST PRODUCTS UP-10-SPN  
DIRECTIONAL ANTENNA (PEANUT)  
ORIENTED WITH BEAM MAXIMA AT 190°  
0.0 DEGREE ELECTRICAL BEAM TILT  
MAXIMUM GAIN: 19.43 dBd**

**KESSLER & GEHMAN**  
TELECOMMUNICATIONS CONSULTING ENGINEERS  
507 N.W. 60th Street, Suite C  
Gainesville, Florida 32607

**WINQ-CA CHANNEL 43-  
PALM BEACH, FLORIDA**

20020702

EXHIBIT 4

# WINQ-CA Channel 43-

*Palm Beach, Florida*

## TABULATION OF RELATIVE FIELD FOR PROPOSED DIRECTIONAL ANTENNA

| <u>AZIMUTH</u> | <u>RELATIVE FIELD</u> | <u>AZIMUTH</u> | <u>RELATIVE FIELD</u> |
|----------------|-----------------------|----------------|-----------------------|
| N000°E         | 0.436                 | N180°E         | 0.955                 |
| N010°E         | 0.336                 | N190°E         | 1.000                 |
| N020°E         | 0.252                 | N200°E         | 0.957                 |
| N030°E         | 0.180                 | N210°E         | 0.843                 |
| N040°E         | 0.120                 | N220°E         | 0.690                 |
| N050°E         | 0.030                 | N230°E         | 0.537                 |
| N060°E         | 0.000                 | N240°E         | 0.453                 |
| N070°E         | 0.000                 | N250°E         | 0.399                 |
| N080°E         | 0.000                 | N260°E         | 0.327                 |
| N090°E         | 0.000                 | N270°E         | 0.236                 |
| N100°E         | 0.000                 | N280°E         | 0.350                 |
| N110°E         | 0.050                 | N290°E         | 0.430                 |
| N120°E         | 0.200                 | N300°E         | 0.517                 |
| N130°E         | 0.300                 | N310°E         | 0.582                 |
| N140°E         | 0.420                 | N320°E         | 0.628                 |
| N150°E         | 0.560                 | N330°E         | 0.640                 |
| N160°E         | 0.720                 | N340°E         | 0.601                 |
| N170°E         | 0.850                 | N350°E         | 0.528                 |

MAXIMUM OF 1.000 AT N190°E

MINIMUM OF 0.000 AT N060°E, N070°E, N080°E, N090°E & N100°E

**KESSLER & GEHMAN**  
TELECOMMUNICATIONS CONSULTING ENGINEERS  
507 N.W. 60th Street, Suite C  
Gainesville, Florida 32607

**WINQ-CA CHANNEL 43-**  
***PALM BEACH, FLORIDA***

**20020702**

**EXHIBIT 5**

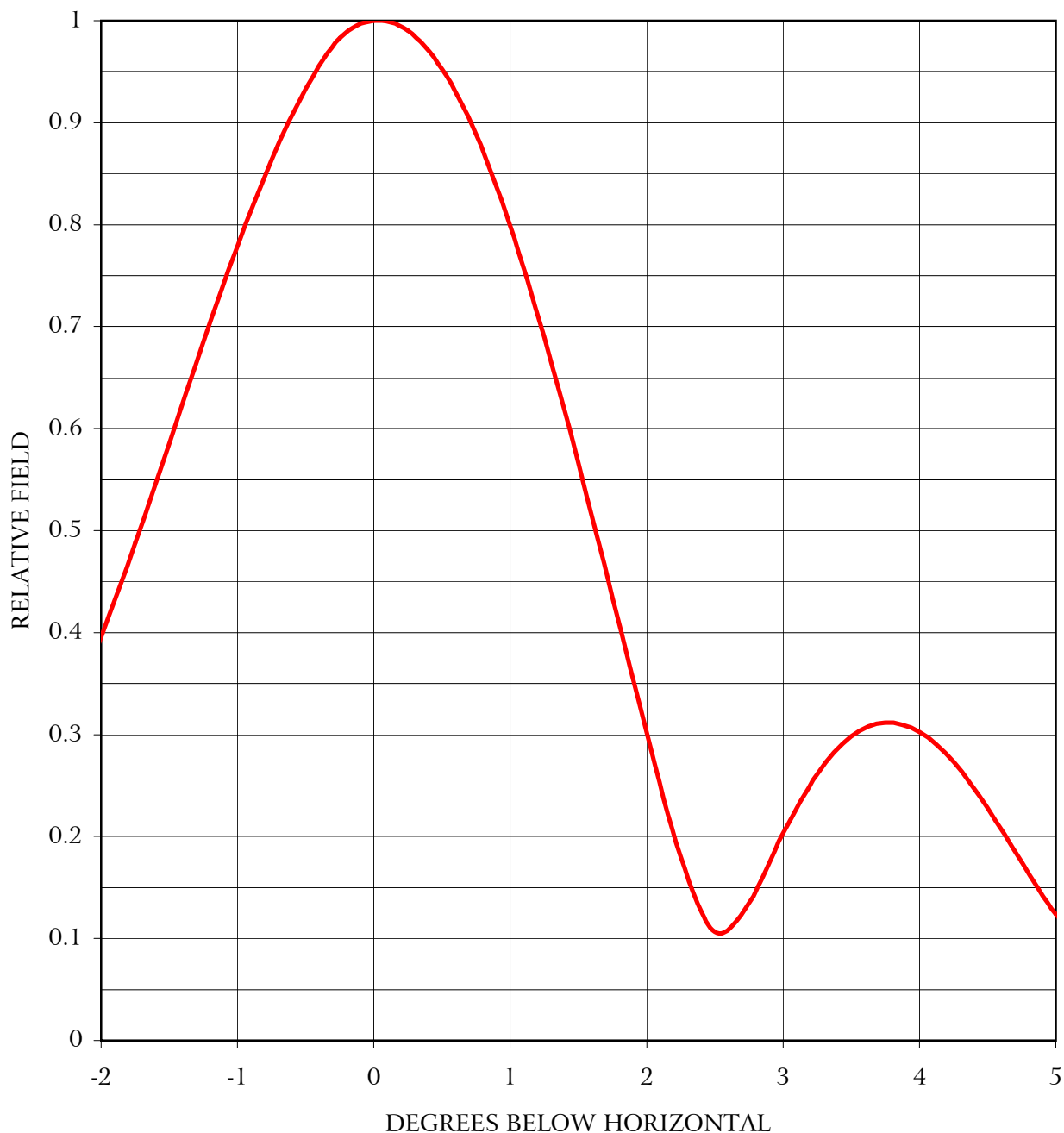
# ELEVATION PATTERN

## *SUPERIOR BROADCAST PRODUCTS UP-10-SPN*

Gain at Main Lobe 18.58 dBd

Beam Tilt 0.0 deg

Frequency 646.5 MHz



**KESSLER & GEHMAN**  
TELECOMMUNICATIONS CONSULTING ENGINEERS  
507 N.W. 60th Street, Suite C  
Gainesville, Florida 32607

**WINQ-CA CHANNEL 43-  
PALM BEACH, FLORIDA**

20020702

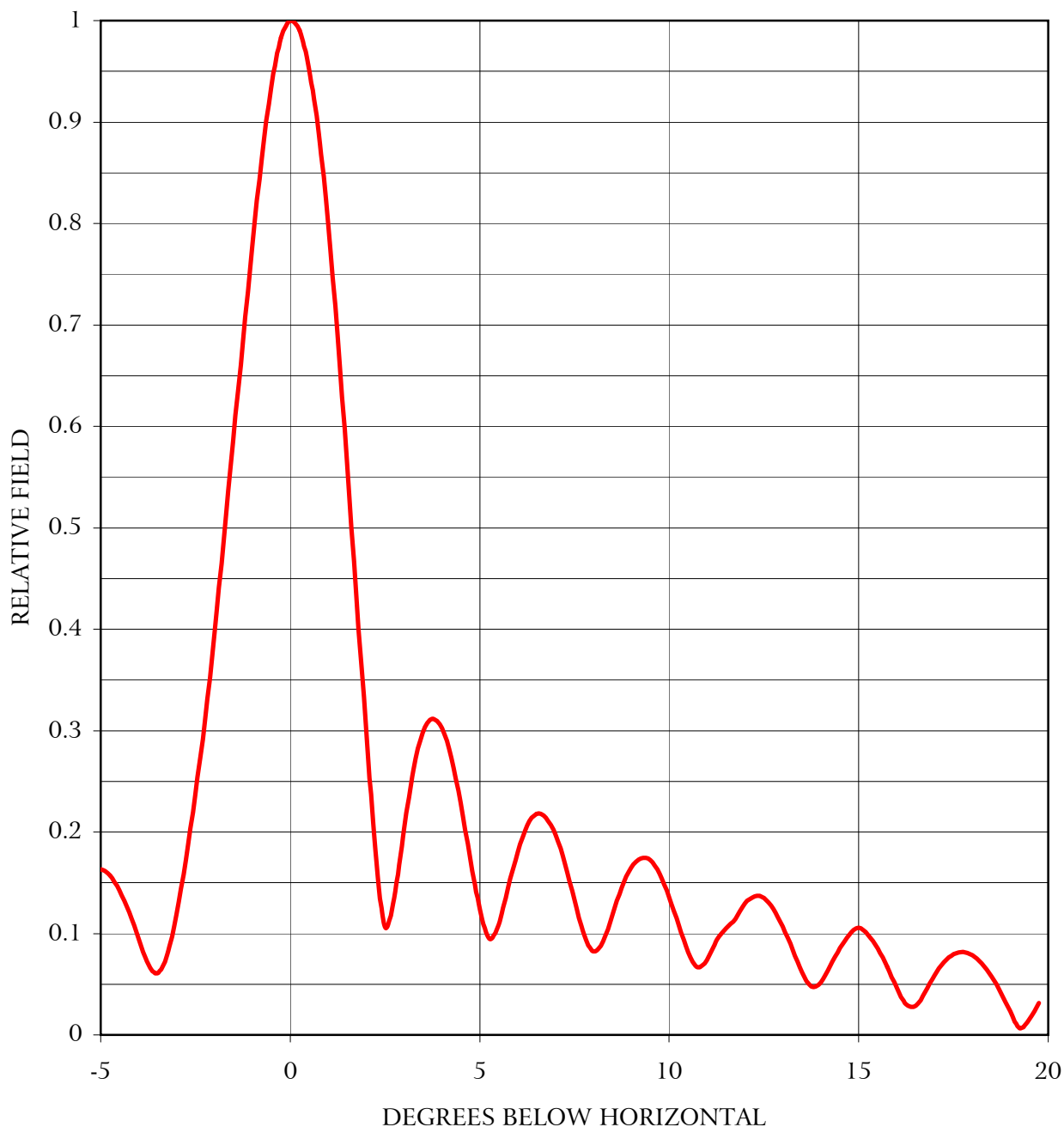
EXHIBIT 6

# ELEVATION PATTERN

## *SUPERIOR BROADCAST PRODUCTS UP-10-SPN*

Gain at Main Lobe 18.58 dBd

Beam Tilt 0.0 deg  
Frequency 646.5 MHz



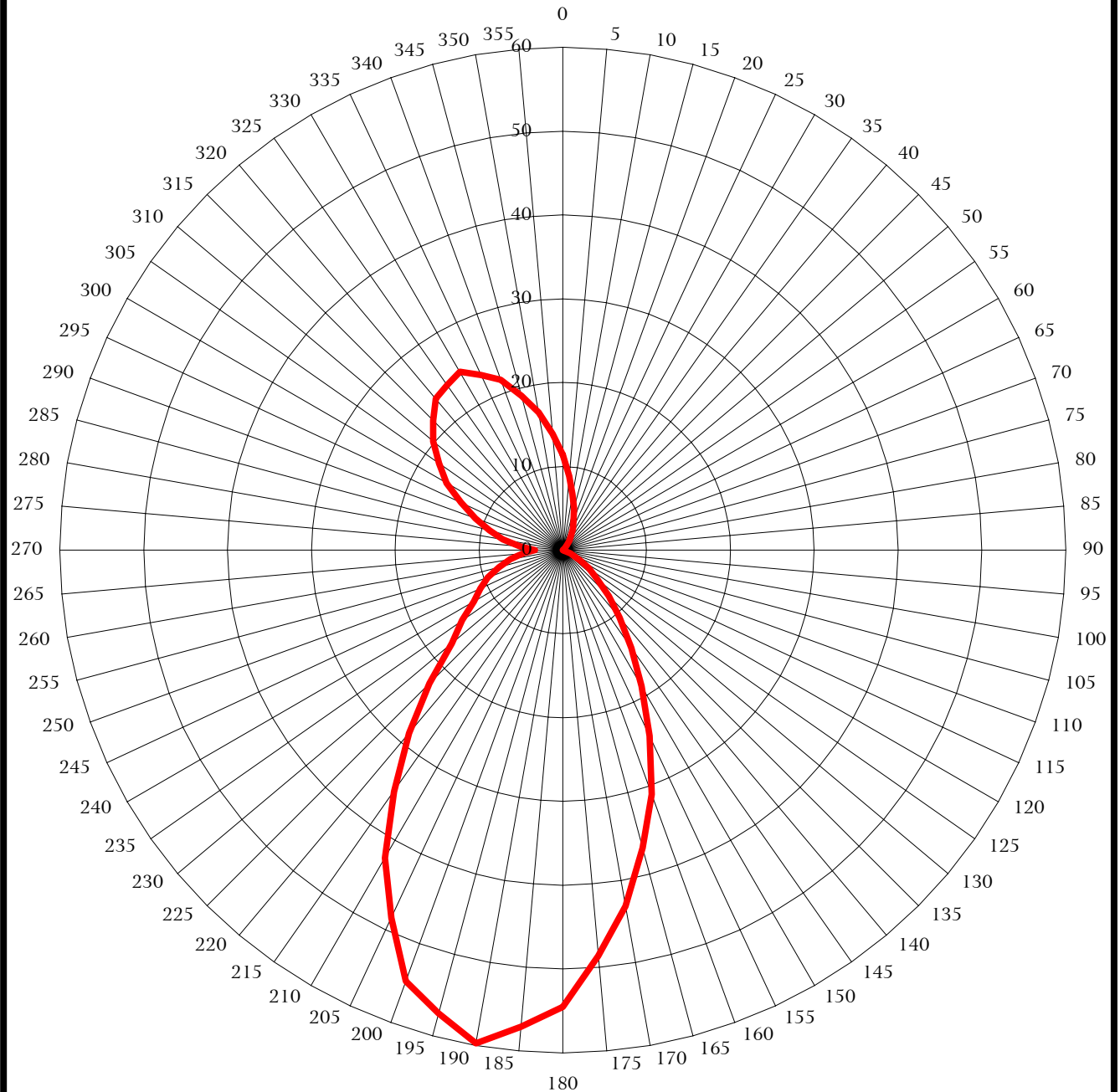
**KESSLER & GEHMAN**  
TELECOMMUNICATIONS CONSULTING ENGINEERS  
507 N.W. 60th Street, Suite C  
Gainesville, Florida 32607

**WINQ-CA CHANNEL 43-  
PALM BEACH, FLORIDA**

20020702

EXHIBIT 7

# ERP - dBk



**SUPERIOR BROADCAST PRODUCTS UP-10-SPN  
DIRECTIONAL ANTENNA (PEANUT)  
ORIENTED WITH BEAM MAXIMA AT 190°  
0.0 DEGREE ELECTRICAL BEAM TILT  
MAXIMUM GAIN: 19.43 dBd**

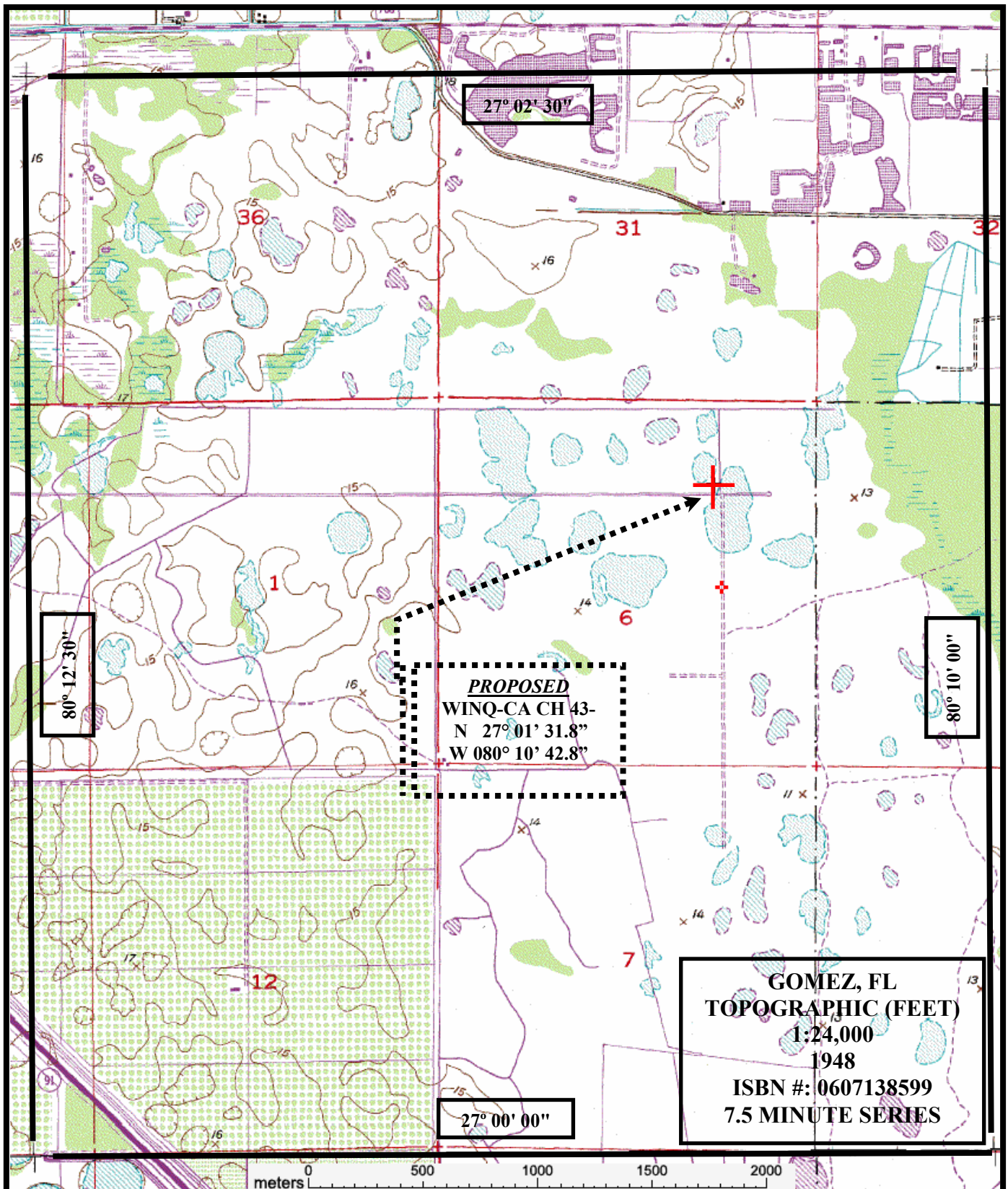
**KESSLER & GEHMAN**  
TELECOMMUNICATIONS CONSULTING ENGINEERS  
507 N.W. 60th Street, Suite C  
Gainesville, Florida 32607

**WINQ-CA CHANNEL 43-  
PALM BEACH, FLORIDA**

20020702

EXHIBIT 8





**KESSLER & GEHMAN**

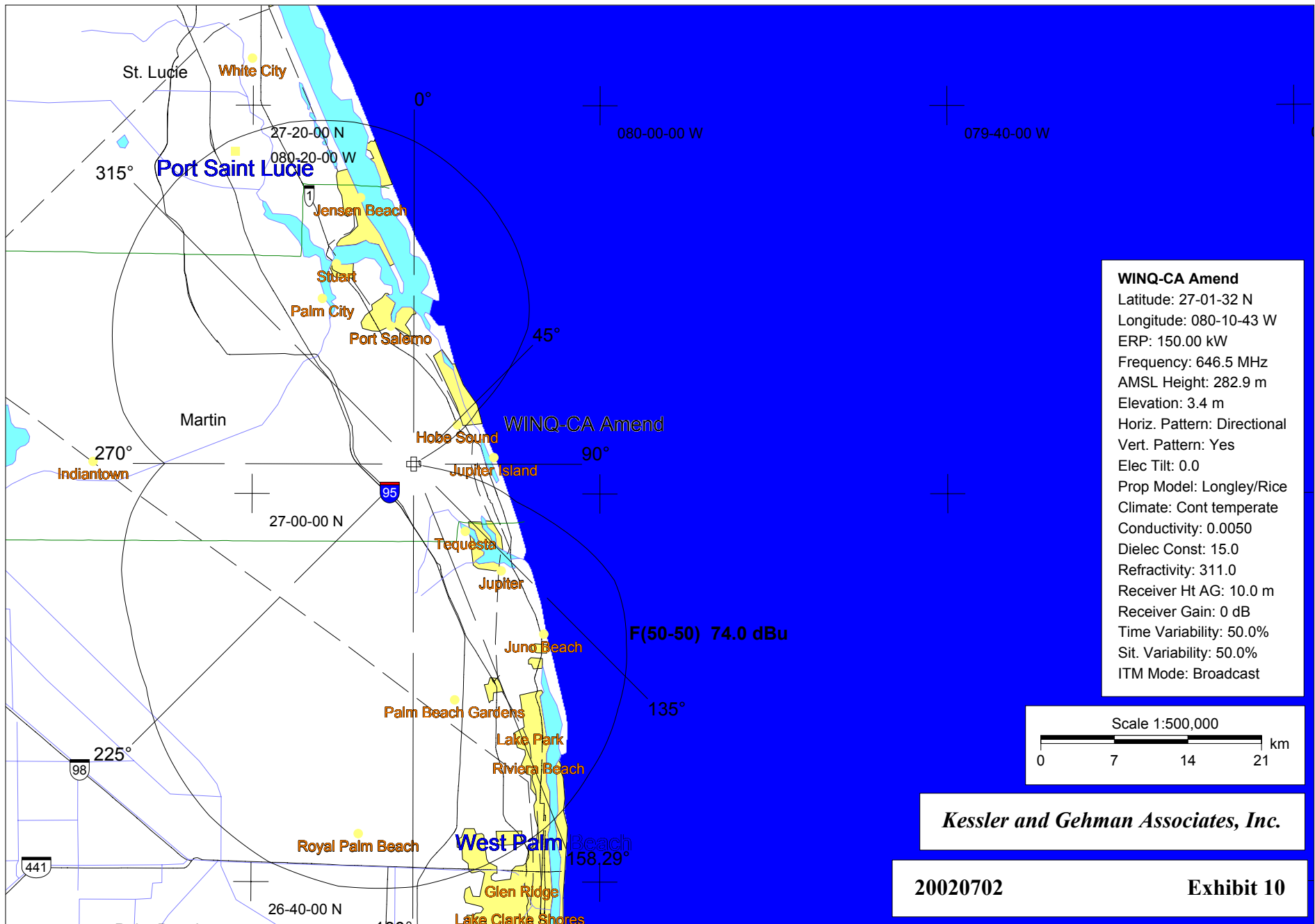
TELECOMMUNICATIONS CONSULTING ENGINEERS  
507 N.W. 60th Street, Suite C  
Gainesville, Florida 32607

WINQ-CA CHANNEL 43-

PALM BEACH, FLORIDA

20020702

EXHIBIT 9





**WINQ-CA CH 43- PROPOSED**

**WINQ-CA CH 43- CP**

**WINQ-CA APP**

Latitude: 27-01-32 N  
Longitude: 080-10-43 W  
ERP: 150.00 kW  
Frequency: 646.5 MHz  
AMSL Height: 282.9 m  
Elevation: 3.4 m  
Horiz. Pattern: Directional  
Vert. Pattern: Yes  
Elec Tilt: 0.0  
Time Variability: 50.0%  
Sit. Variability: 50.0%

**WINQ-CA (CP)**

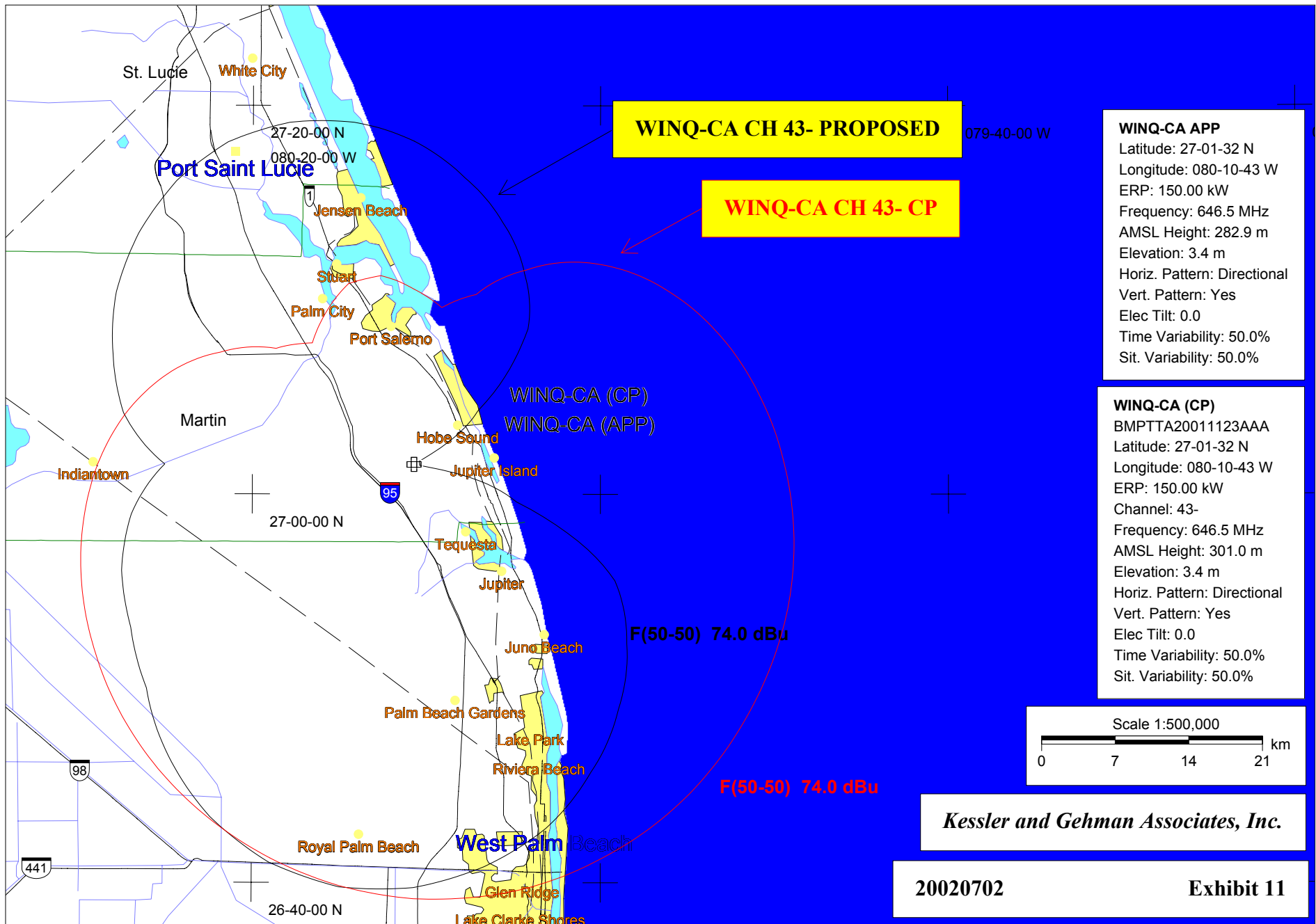
BMPTTA20011123AAA  
Latitude: 27-01-32 N  
Longitude: 080-10-43 W  
ERP: 150.00 kW  
Channel: 43-  
Frequency: 646.5 MHz  
AMSL Height: 301.0 m  
Elevation: 3.4 m  
Horiz. Pattern: Directional  
Vert. Pattern: Yes  
Elec Tilt: 0.0  
Time Variability: 50.0%  
Sit. Variability: 50.0%

Scale 1:500,000  
0 7 14 21 km

*Kessler and Gehman Associates, Inc.*

20020702

Exhibit 11



**Kessler & Gehman Associates, Inc.  
Gainesville, FL**

Page 1  
Tuesday, July 02, 2002

**Dataworld LPTV/TV Translator Channel Study**

This product is provided by Dataworld, Inc.  
solely for the standard business uses of  
Kessler & Gehman Associates, Inc.  
and is not to be duplicated for other purposes or provided  
to others without written permission of Dataworld, Inc.

**ALL RIGHTS RESERVED**

Copyright © 2002, Dataworld, Inc.

Disclaimer: Dataworld, Inc. assumes no liability for any errors or  
omissions in the information hereby provided, and shall not be liable  
for any injuries or damages (including consequential) which might result  
from use of the said information.

**Job Title: WINQ-CA CH 43- LPTV Studies**

|                           |  |
|---------------------------|--|
| Channel(s):               | 43 Offset: -                             |
| Coordinates:              | N 27° 01' 32.0" W 80° 10' 43.0"          |
| Effective radiated power: | 150 kW                                   |
| Antenna                   | 279.4 m (916.4 ft) above average terrain |
| Safety Zone:              | 20.0 km (12.4 mi)                        |
| TV translators included   |  |

Datavorld LPTV/TV Translator Interference Study

**Title: WINQ-CA CH 43- LPTV Studies**

Channel: 43 Offset: - (644-650 MHz) Analog  
 Database: DW 6/26/2002 5:29:24 PM

ERP: 150 kW  
 HAAT: 279.4 m  
 Latitude: N 27° 01' 32.0"  
 Longitude: W 80° 10' 43.0"  
 Safety Zone: 20.0 km

| Call            | Auth | Licensee name         | Chan            | HAAT(m) | ERP      | Latitude        | Br-to | Dist  | Req   |
|-----------------|------|-----------------------|-----------------|---------|----------|-----------------|-------|-------|-------|
| City of License |      | St                    | FCC File Number | Zone    | HAMSL(m) | Longitude       | -from | (km)  | (km)  |
| WFLX            | Lic  | Raycom National, Inc. | 29 +            | 457.0   | 5000     | N 26° 34' 37.0" | 187.2 | 50.10 | 119.7 |
| West Palm Beach |      | FL                    | BLCT-19860514KH | III     | 462.0    | W 80° 14' 32.0" | 7.2   | -69.6 | SHORT |

DA: RCA ODDWFLX @ 0.0°

Proposed Channel 43 87 dBuV/m F(50,50) Interfering contour = 23.2 km

WFLX Channel 29 64 dBuV/m F(50,50) Service contour = 96.5 km

|                 |    |                       |                  |       |       |                 |       |       |       |
|-----------------|----|-----------------------|------------------|-------|-------|-----------------|-------|-------|-------|
| WFLX            | CP | Raycom National, Inc. | 29 +             | 458.0 | 5000  | N 26° 34' 37.0" | 187.2 | 50.11 | 119.8 |
| West Palm Beach |    | FL                    | BPCT-19990910AAA | III   | 462.4 | W 80° 14' 32.0" | 7.2   | -69.7 | SHORT |

CP granted 7/13/2000 per 44778-7/18/2000; SITE RESTRICTION 2.5 MI S;

Proposed Channel 43 87 dBuV/m F(50,50) Interfering contour = 23.2 km

WFLX Channel 29 64 dBuV/m F(50,50) Service contour = 96.6 km

|       |     |                  |                 |       |       |                 |       |       |       |
|-------|-----|------------------|-----------------|-------|-------|-----------------|-------|-------|-------|
| WBZL  | Lic | Channel 39, Inc. | 39 o            | 276.0 | 5000  | N 25° 58' 07.0" | 182.1 | 117.2 | 32.00 |
| Miami |     | FL               | BLCT-19970401LW | III   | 278.0 | W 80° 13' 20.0" | 2.1   | 85.18 | CLEAR |

DA: DIE ODD970401LW @ 0.0°

|                 |     |                                |                 |       |       |                 |       |       |       |
|-----------------|-----|--------------------------------|-----------------|-------|-------|-----------------|-------|-------|-------|
| WXEL-TV         | Lic | Barry Telecommunications, Inc. | *42 +           | 439.0 | 2140  | N 26° 34' 37.0" | 187.2 | 50.10 | 120.4 |
| West Palm Beach |     | FL                             | BLET-19820625KF | III   | 444.0 | W 80° 14' 32.0" | 7.2   | -70.3 | SHORT |

DA: RCA ODDWHRSTV @ 0.0°

Proposed Channel 43 79 dBuV/m F(50,50) Interfering contour = 33.8 km

WXEL-TV Channel 42 64 dBuV/m F(50,50) Service contour = 86.6 km

Proposed Channel 43 74 dBuV/m F(50,50) Service contour = 40.9 km

WXEL-TV Channel 42 89 dBuV/m F(50,50) Interfering contour = 42.2 km

|           |     |                              |                 |       |       |                 |       |       |       |
|-----------|-----|------------------------------|-----------------|-------|-------|-----------------|-------|-------|-------|
| WOTF      | Lic | Univision of Melbourne, Inc. | 43 +            | 303.0 | 2290  | N 28° 18' 22.0" | 333.3 | 159.3 | 263.5 |
| Melbourne |     | FL                           | BLCT-19980422KG | III   | 311.0 | W 80° 54' 45.0" | 152.9 | -104  | SHORT |

WBSF changed to WFUO 11/1/01 per #419 (11/7/01); License granted 12/28/99 per 44646-1/6/2000;; DA: SWR ODD970219KE @ 0.0°

Proposed Channel 43 36 dBuV/m F(50,10) Interfering contour = 187.5 km

WOTF Channel 43 64 dBuV/m F(50,50) Service contour = 76.0 km

Proposed Channel 43 74 dBuV/m F(50,50) Service contour = 40.9 km

WOTF Channel 43 46 dBuV/m F(50,10) Interfering contour = 200.9 km

|           |    |                             |                   |  |       |                 |       |       |       |
|-----------|----|-----------------------------|-------------------|--|-------|-----------------|-------|-------|-------|
| W32AB     | CP | Key Communications of Texas | 43 -              |  | 120.5 | N 25° 32' 24.0" | 190.0 | 167.1 | 269.7 |
| Matecumbe |    | FL                          | BPTTL-20011029AAQ |  | 302.0 | W 80° 28' 09.0" | 9.9   | -103  | SHORT |

CP granted 1/16/2002 per 45155-1/22/2002;; DA: SUP UP-6-SL @ 20.0°; Primary station: WPBT Miami, FL; **Calculated HAAT: 300 m**

Proposed Channel 43 29 dBuV/m F(50,10) Interfering contour = 229.2 km

W32AB Channel 43 74 dBuV/m F(50,50) Service contour = 40.5 km

Proposed Channel 43 74 dBuV/m F(50,50) Service contour = 40.9 km

W32AB Channel 43 29 dBuV/m F(50,10) Interfering contour = 225.5 km

Proposed Channel 43 46 dBuV/m F(50,10) Interfering contour = 132.3 km

W32AB Channel 43 74 dBuV/m F(50,50) Service contour = 40.5 km

Proposed Channel 43 74 dBuV/m F(50,50) Service contour = 40.9 km

W32AB Channel 43 46 dBuV/m F(50,10) Interfering contour = 129.4 km

|           |     |                             |                   |  |      |                 |       |       |       |
|-----------|-----|-----------------------------|-------------------|--|------|-----------------|-------|-------|-------|
| W43AD     | Lic | WEYS Television Corporation | 43                |  | 0.35 | N 24° 54' 18.0" | 191.4 | 239.6 | 233.8 |
| Matecumbe |     | FL                          | BLTTL-20010725ADO |  | 51.0 | W 80° 38' 56.0" | 11.2  | 5.775 | CLOSE |

License granted 8/7/2001 per 45046-8/10/2001; BT.5; N CMMN CXR; GR. ON REPORT 222014;; DA: SCA CL-1469 @ 50.0°; Primary station: WSVN

Miami, FL; **Calculated HAAT: 51 m**

Proposed Channel 43 29 dBuV/m F(50,10) Interfering contour = 229.2 km

W43AD Channel 43 74 dBuV/m F(50,50) Service contour = 4.6 km

Proposed Channel 43 74 dBuV/m F(50,50) Service contour = 40.9 km

W43AD Channel 43 29 dBuV/m F(50,10) Interfering contour = 57.5 km

Proposed Channel 43 46 dBuV/m F(50,10) Interfering contour = 132.3 km

W43AD Channel 43 74 dBuV/m F(50,50) Service contour = 4.6 km

Proposed Channel 43 74 dBuV/m F(50,50) Service contour = 40.9 km

W43AD Channel 43 46 dBuV/m F(50,10) Interfering contour = 24.2 km

|             |     |                          |                   |  |       |                 |       |       |       |
|-------------|-----|--------------------------|-------------------|--|-------|-----------------|-------|-------|-------|
| W61AI       | App | Mako Communications, LLC | 43 -              |  | 45    | N 28° 02' 21.0" | 295.3 | 269.2 | 257.3 |
| Rock Harbor |     | FL                       | BPTTL-20020528AAK |  | 183.0 | W 82° 39' 20.0" | 114.2 | 11.96 | CLOSE |

From W61AI;; DA: ACS ATS6X1 @ 210.0°; Primary station: WTVJ Miami, FL; **Calculated HAAT: 177 m**

Proposed Channel 43 29 dBuV/m F(50,10) Interfering contour = 229.2 km

W61AI Channel 43 74 dBuV/m F(50,50) Service contour = 28.0 km

Proposed Channel 43 74 dBuV/m F(50,50) Service contour = 40.9 km

W61AI Channel 43 29 dBuV/m F(50,10) Interfering contour = 184.9 km

Proposed Channel 43 46 dBuV/m F(50,10) Interfering contour = 132.3 km

W61AI Channel 43 74 dBuV/m F(50,50) Service contour = 28.0 km

Proposed Channel 43 74 dBuV/m F(50,50) Service contour = 40.9 km

W61AI Channel 43 46 dBuV/m F(50,10) Interfering contour = 94.1 km

Dataworld LPTV/TV Translator Interference Study

**Title: WINQ-CA CH 43- LPTV Studies**

Channel: 43 Offset: - (644-650 MHz) Analog  
Database: DW 6/26/2002 5:29:24 PM

ERP: 150 kW  
HAAT: 279.4 m

Latitude: N 27° 01' 32.0"  
Longitude: W 80° 10' 43.0"  
Safety Zone: 20.0 km

| Call            | Auth | Licensee name                  | Chan            | HAAT(m) | ERP      | Latitude        | Br-to     | Dist  | Req   |
|-----------------|------|--------------------------------|-----------------|---------|----------|-----------------|-----------|-------|-------|
| City of License |      | St                             | FCC File Number | Zone    | HAMSL(m) | (kW)            | Longitude | -from | (km)  |
| W44AY           | Lic  | Barry Telecommunications, Inc. | 44 -            | 111.3   | 34.8     | N 27° 32' 46.0" | 342.0     | 60.68 | 49.76 |
| Fort Pierce     |      | FL                             | BLTT-19931220IK |         | 114.0    | W 80° 22' 08.0" | 162.0     | 10.92 | CLOSE |

DA: BOG B16UD @ 340.0°; Primary station: WXEL-TV West Palm Beach, FL

Proposed Channel 43 89 dBuV/m F(50,50) Interfering contour = 20.8 km  
Proposed Channel 43 74 dBuV/m F(50,50) Service contour = 40.9 km

W44AY Channel 44 74 dBuV/m F(50,50) Service contour = 21.7 km  
W44AY Channel 44 89 dBuV/m F(50,50) Interfering contour = 8.9 km

|            |    |                                 |                   |       |       |                 |       |       |       |
|------------|----|---------------------------------|-------------------|-------|-------|-----------------|-------|-------|-------|
| WPPB-TV    | CP | School Board of Broward County, | *44               | 311.0 | 565   | N 25° 59' 34.0" | 179.8 | 114.4 | 113.7 |
| Boca Raton |    | FL                              | BPEDT-19991028ACM | III   | 311.0 | W 80° 10' 27.0" | 359.8 | 0.674 | CLOSE |

Digital channel; Move to DTV Channel Ordered;

Proposed Channel 43 89 dBuV/m F(50,50) Interfering contour = 20.8 km  
Proposed Channel 43 74 dBuV/m F(50,50) Service contour = 40.9 km

WPPB-TV Channel 44 41 dBuV/m F(50,90) Service contour = 93.0 km  
WPPB-TV Channel 44 89 dBuV/m F(50,50) Interfering contour = 29.1 km

|       |     |                               |                 |       |       |                 |       |       |       |
|-------|-----|-------------------------------|-----------------|-------|-------|-----------------|-------|-------|-------|
| NEW   | App | Glendale Broadcasting Company | 45 +            | 310.0 | 3020  | N 25° 59' 34.0" | 179.8 | 114.4 | 32.00 |
| Miami |     | FL                            | BPCT-19911227KE | III   | 312.0 | W 80° 10' 27.0" | 359.8 | 82.42 | CLEAR |

MUTUALLY EXCLUSIVE W/ WHFT-TV; One step application to change to class B1;; DA: HAR ODD911227KE @ 350.0°

>> End of channel 43 study <<

Dataworld LPTV/TV Translator Interference Study

**Title: WINQ-CA CH 43- LPTV Studies**

Channel: 43 Offset: - (644-650 MHz) Analog  
Database: FCC 6/28/2002 12:49:26 AM

ERP: 150 kW  
HAAT: 279.4 m  
Latitude: N 27° 01' 32.0"  
Longitude: W 80° 10' 43.0"  
Safety Zone: 20.0 km

| Call  | Auth | Licensee name                  | Chan              | HAAT(m) | ERP   | Latitude        | Br-to | Dist  | Req   |
|---|------|--------------------------------|-------------------|---------|---|-----------------|-------|-------|-------|
| City of License   |      | St                             | FCC File Number   | Zone    | HAMSL(m)  | Longitude       | -from | (km)  | (km)  |
| WFLX  | CP   | RAYCOM NATIONAL, INC.          | 29 +              | 458.0   | 5000  | N 26° 34' 37.0" | 187.2 | 50.11 | 119.8 |
| WEST PALM BEACH   |      | FL                             | BPCT-19990910AAA  | III     | 462.4   | W 80° 14' 32.0" | 7.2   | -69.7 | SHORT |
| DA: DIE TFU-31ETT P210DC @ 0.0°                                       |      |                                |                   |         |   |                 |       |       |       |
| Proposed Channel 43 87 dBuV/m F(50,50) Interfering contour = 23.2 km  |      |                                |                   |         | WFLX Channel 29 64 dBuV/m F(50,50) Service contour = 96.6 km        |                 |       |       |       |
| WFLX  | LIC  | RAYCOM NATIONAL, INC.          | 29 +              | 457.0   | 5000  | N 26° 34' 37.0" | 187.2 | 50.11 | 119.7 |
| WEST PALM BEACH   |      | FL                             | BLCT-19860514KH   | III     | 462.0   | W 80° 14' 32.0" | 7.2   | -69.6 | SHORT |
| DA: RCA ODDWFLX @ 0.0°  |      |                                |                   |         |   |                 |       |       |       |
| Proposed Channel 43 87 dBuV/m F(50,50) Interfering contour = 23.2 km  |      |                                |                   |         | WFLX Channel 29 64 dBuV/m F(50,50) Service contour = 96.5 km        |                 |       |       |       |
| WBZL  | LIC  | CHANNEL 39, INC.               | 39 o              | 276.0   | 5000  | N 25° 58' 07.0" | 182.1 | 117.2 | 32.00 |
| MIAMI   |      | FL                             | BLCT-19970401LW   | III     | 278.0   | W 80° 13' 20.0" | 2.1   | 85.18 | CLEAR |
| DA: DIE ODD970401LW @ 0.0°  |      |                                |                   |         |   |                 |       |       |       |
| WXEL-TV   | LIC  | BARRY TELECOMMUNICATIONS, INC. | *42 +             | 439.0   | 2140  | N 26° 34' 37.0" | 187.2 | 50.11 | 120.4 |
| WEST PALM BEACH   |      | FL                             | BLET-19820625KF   | III     | 444.0   | W 80° 14' 32.0" | 7.2   | -70.3 | SHORT |
| DA: RCA ODDWHRSTV @ 0.0°  |      |                                |                   |         |   |                 |       |       |       |
| Proposed Channel 43 79 dBuV/m F(50,50) Interfering contour = 33.8 km  |      |                                |                   |         | WXEL-TV Channel 42 64 dBuV/m F(50,50) Service contour = 86.6 km     |                 |       |       |       |
| Proposed Channel 43 74 dBuV/m F(50,50) Service contour = 40.9 km      |      |                                |                   |         | WXEL-TV Channel 42 89 dBuV/m F(50,50) Interfering contour = 42.2 km |                 |       |       |       |
| WOTF  | LIC  | UNIVISION OF MELBOURNE INC.    | 43 +              | 303.0   | 2290  | N 28° 18' 22.0" | 333.3 | 159.3 | 263.5 |
| MELBOURNE   |      | FL                             | BLCT-19980422KG   | III     | 311.0   | W 80° 54' 45.0" | 152.9 | -104  | SHORT |
| Proposed Channel 43 36 dBuV/m F(50,10) Interfering contour = 187.5 km |      |                                |                   |         | WOTF Channel 43 64 dBuV/m F(50,50) Service contour = 76.0 km        |                 |       |       |       |
| Proposed Channel 43 74 dBuV/m F(50,50) Service contour = 40.9 km      |      |                                |                   |         | WOTF Channel 43 46 dBuV/m F(50,10) Interfering contour = 200.9 km   |                 |       |       |       |
| W32AB   | CP   | KEY COMMUNICATIONS OF TEXAS    | 43 -              |         | 120.5   | N 25° 32' 24.0" | 190.0 | 167.1 | 269.7 |
| MATECUMBE   |      | FL                             | BPTTL-20011029AAQ |         | 302.0   | W 80° 28' 09.0" | 9.9   | -103  | SHORT |
| DA: SUP UP-6-SL @ 20.0°; <b>Calculated HAAT: 300 m</b>                |      |                                |                   |         |   |                 |       |       |       |
| Proposed Channel 43 29 dBuV/m F(50,10) Interfering contour = 229.2 km |      |                                |                   |         | W32AB Channel 43 74 dBuV/m F(50,50) Service contour = 40.5 km       |                 |       |       |       |
| Proposed Channel 43 74 dBuV/m F(50,50) Service contour = 40.9 km      |      |                                |                   |         | W32AB Channel 43 29 dBuV/m F(50,10) Interfering contour = 225.5 km  |                 |       |       |       |
| Proposed Channel 43 46 dBuV/m F(50,10) Interfering contour = 132.3 km |      |                                |                   |         | W32AB Channel 43 74 dBuV/m F(50,50) Service contour = 40.5 km       |                 |       |       |       |
| Proposed Channel 43 74 dBuV/m F(50,50) Service contour = 40.9 km      |      |                                |                   |         | W32AB Channel 43 46 dBuV/m F(50,10) Interfering contour = 129.4 km  |                 |       |       |       |
| W43AD   | LIC  | WEYS TELEVISION CORP.          | 43                |         | 0.35  | N 24° 54' 18.0" | 191.4 | 239.6 | 233.8 |
| MATECUMBE   |      | FL                             | BLTTL-20010725ADO |         | 51.3  | W 80° 38' 56.0" | 11.2  | 5.763 | CLOSE |
| DA: SCA CL-1469 @ 50.0°; <b>Calculated HAAT: 51 m</b>                 |      |                                |                   |         |   |                 |       |       |       |
| Proposed Channel 43 29 dBuV/m F(50,10) Interfering contour = 229.2 km |      |                                |                   |         | W43AD Channel 43 74 dBuV/m F(50,50) Service contour = 4.6 km        |                 |       |       |       |
| Proposed Channel 43 74 dBuV/m F(50,50) Service contour = 40.9 km      |      |                                |                   |         | W43AD Channel 43 29 dBuV/m F(50,10) Interfering contour = 57.6 km   |                 |       |       |       |
| Proposed Channel 43 46 dBuV/m F(50,10) Interfering contour = 132.3 km |      |                                |                   |         | W43AD Channel 43 74 dBuV/m F(50,50) Service contour = 4.6 km        |                 |       |       |       |
| Proposed Channel 43 74 dBuV/m F(50,50) Service contour = 40.9 km      |      |                                |                   |         | W43AD Channel 43 46 dBuV/m F(50,10) Interfering contour = 24.3 km   |                 |       |       |       |
| W61AI   | APP  | MAKO COMMUNICATIONS, LLC       | 43 -              |         | 45  | N 28° 02' 21.0" | 295.3 | 269.2 | 257.3 |
| LEALMAN   |      | FL                             | BPTTL-20020528AAK |         | 183.0   | W 82° 39' 20.0" | 114.2 | 11.96 | CLOSE |
| DA: ACS ATS6X1 @ 210.0°; <b>Calculated HAAT: 177 m</b>                |      |                                |                   |         |   |                 |       |       |       |
| Proposed Channel 43 29 dBuV/m F(50,10) Interfering contour = 229.2 km |      |                                |                   |         | W61AI Channel 43 74 dBuV/m F(50,50) Service contour = 28.0 km       |                 |       |       |       |
| Proposed Channel 43 74 dBuV/m F(50,50) Service contour = 40.9 km      |      |                                |                   |         | W61AI Channel 43 29 dBuV/m F(50,10) Interfering contour = 184.9 km  |                 |       |       |       |
| Proposed Channel 43 46 dBuV/m F(50,10) Interfering contour = 132.3 km |      |                                |                   |         | W61AI Channel 43 74 dBuV/m F(50,50) Service contour = 28.0 km       |                 |       |       |       |
| Proposed Channel 43 74 dBuV/m F(50,50) Service contour = 40.9 km      |      |                                |                   |         | W61AI Channel 43 46 dBuV/m F(50,10) Interfering contour = 94.1 km   |                 |       |       |       |

Dataworld LPTV/TV Translator Interference Study

**Title: WINQ-CA CH 43- LPTV Studies**

Channel: 43 Offset: - (644-650 MHz) Analog  
Database: FCC 6/28/2002 12:49:26 AM

ERP: 150 kW  
HAAT: 279.4 m

Latitude: N 27° 01' 32.0"  
Longitude: W 80° 10' 43.0"  
Safety Zone: 20.0 km

| Call            | Auth | Licensee name                  | Chan            | HAAT(m) | ERP      | Latitude        | Br-to | Dist  | Req   |
|-----------------|------|--------------------------------|-----------------|---------|----------|-----------------|-------|-------|-------|
| City of License |      | St                             | FCC File Number | Zone    | HAMSL(m) | Longitude       | -from | (km)  | (km)  |
| W44AY           | LIC  | BARRY TELECOMMUNICATIONS, INC. | 44 -            |         | 34.8     | N 27° 32' 46.0" | 342.0 | 60.68 | 49.74 |
| FORT PIERCE     |      | FL                             | BLTT-19931220IK |         | 114.0    | W 80° 22' 08.0" | 162.0 | 10.94 | CLOSE |

DA: BOG B16UD @ 340.0°; **Calculated HAAT: 111 m**

Proposed Channel 43 89 dBuV/m F(50,50) Interfering contour = 20.8 km  
Proposed Channel 43 74 dBuV/m F(50,50) Service contour = 40.9 km

W44AY Channel 44 74 dBuV/m F(50,50) Service contour = 21.7 km  
W44AY Channel 44 89 dBuV/m F(50,50) Interfering contour = 8.9 km

|            |    |                                  |                   |       |       |                 |       |       |       |
|------------|----|----------------------------------|-------------------|-------|-------|-----------------|-------|-------|-------|
| WPPB-TV    | CP | THE SCHOOL BOARD OF BROWARD COUN | 44                | 311.0 | 565   | N 25° 59' 34.0" | 179.8 | 114.4 | 113.7 |
| BOCA RATON |    | FL                               | BPEDT-19991028ACM | II    | 311.0 | W 80° 10' 27.0" | 359.8 | 0.674 | CLOSE |

Digital channelDA: DIE TUP-SP3-12-1 @ 0.0°

Proposed Channel 43 89 dBuV/m F(50,50) Interfering contour = 20.8 km  
Proposed Channel 43 74 dBuV/m F(50,50) Service contour = 40.9 km

WPPB-TV Channel 44 41 dBuV/m F(50,90) Service contour = 93.0 km  
WPPB-TV Channel 44 89 dBuV/m F(50,50) Interfering contour = 29.1 km

|         |     |                                  |                 |       |       |                 |       |       |       |
|---------|-----|----------------------------------|-----------------|-------|-------|-----------------|-------|-------|-------|
| WHFT-TV | LIC | TRINITY BROADCASTING OF FLORIDA, | 45 +            | 308.0 | 2570  | N 25° 59' 34.0" | 179.8 | 114.4 | 32.00 |
| MIAMI   |     | FL                               | BLCT-19951208KF |       | 310.0 | W 80° 10' 27.0" | 359.8 | 82.42 | CLEAR |

DA: AND ODD931220KG @ 0.0°

>> End of channel 43 study <<

## **Longley-Rice Interference Studies Analysis**

TV INTERFERENCE and SPACING ANALYSIS PROGRAM

Date: 07-01-2002 Time: 13:52:28

Record Selected for Analysis

WINQ-CA CUR -PROPOSED Palm Beach FL US  
Channel 43 ERP 150.0 kW HAAT 00279 m RCAMSL 00282 m  
Latitude 027-01-32 Longitude 0080-10-43  
Status CPM Zone Border Offset -  
Dir Antenna Make CDB Model 00000000000001 Beam tilt N Ref Azimuth 0.0  
Last update 00000000 Cutoff date 00000000 Docket  
Comments  
Applicant

Cell Size for Service Analysis 2.0 km/side

Distance Increments for Longley-Rice Analysis 1.00 km

Not full service station

Maximum height/power limits not checked

| Azimuth<br>(Deg) | ERP<br>(kW) | HAAT<br>(m) | 74.0 dBu F(50,50)<br>(km) |
|------------------|-------------|-------------|---------------------------|
| 0.0              | 28.514      | 279.2       | 30.7                      |
| 45.0             | 0.493       | 280.3       | 11.1                      |
| 90.0             | 0.000       | 280.2       | 1.5                       |
| 135.0            | 19.440      | 280.7       | 28.5                      |
| 180.0            | 136.804     | 277.2       | 40.2                      |
| 225.0            | 56.457      | 276.6       | 34.7                      |
| 270.0            | 8.354       | 276.3       | 23.6                      |
| 315.0            | 54.904      | 278.1       | 34.6                      |

Evaluation from Class A Station

Station inside contour of station

WFLX 29 WEST PALM BEACH FL BPCT 19990910AAA

Station inside contour of station

WFLX 29 WEST PALM BEACH FL BLCT 19860514KH

Station inside contour of station

WXEL-TV 42 WEST PALM BEACH FL BLET 19820625KF

Contour overlap to station

WBSF 43 MELBOURNE FL BLCT 19980422KG

D/U ratio at contour 26.8 dB  
 Offset Proposed - Offset Protected + Required D/U ratio: 28.0  
 Radial 90.0 degrees  
 Bearing to point on contour 358.8 degrees  
 D/U ratio at contour 24.5 dB  
 Radial 100.0 degrees  
 Bearing to point on contour 358.4 degrees  
 D/U ratio at contour 22.1 dB  
 Radial 110.0 degrees  
 Bearing to point on contour 357.8 degrees  
 D/U ratio at contour 19.4 dB  
 Radial 120.0 degrees  
 Bearing to point on contour 355.9 degrees  
 D/U ratio at contour 16.2 dB  
 Radial 130.0 degrees  
 Bearing to point on contour 351.5 degrees  
 D/U ratio at contour 13.3 dB  
 Radial 140.0 degrees  
 Bearing to point on contour 344.6 degrees  
 D/U ratio at contour 11.6 dB  
 Radial 150.0 degrees  
 Bearing to point on contour 335.9 degrees  
 D/U ratio at contour 11.6 dB  
 Radial 160.0 degrees  
 Bearing to point on contour 326.9 degrees  
 D/U ratio at contour 13.4 dB  
 Radial 170.0 degrees  
 Bearing to point on contour 319.0 degrees  
 D/U ratio at contour 16.1 dB  
 Radial 180.0 degrees  
 Bearing to point on contour 313.5 degrees  
 D/U ratio at contour 18.8 dB  
 Radial 190.0 degrees  
 Bearing to point on contour 310.6 degrees  
 D/U ratio at contour 21.2 dB  
 Radial 200.0 degrees  
 Bearing to point on contour 309.3 degrees  
 D/U ratio at contour 23.5 dB  
 Radial 210.0 degrees  
 Bearing to point on contour 308.3 degrees  
 D/U ratio at contour 25.8 dB  
 Radial 220.0 degrees  
 Bearing to point on contour 307.4 degrees  
 D/U ratio at contour 27.9 dB  
 Radial 230.0 degrees  
 Bearing to point on contour 307.4 degrees

#### Contour Overlap Evaluation from Class A Complete

Proposed facility OK to FCC Monitoring Stations

Proposed facility OK toward West Virginia quite zone

Proposed facility OK toward Table Mountain





|    |         |                    |       |     |        |           |
|----|---------|--------------------|-------|-----|--------|-----------|
| 21 | WCLF-DT | CLEARWATER FL      | 61.9  | PLN | DTVPLN | -DTVP0409 |
| 24 | WTSP-DT | ST. PETERSBURG FL  | 61.9  | PLN | DTVPLN | -DTVP0528 |
| 25 | WBSV-DT | VENICE FL          | 83.2  | PLN | DTVPLN | -DTVP0563 |
| 28 | WGFL-DT | HIGH SPRINGS FL    | 201.0 | PLN | DTVPLN | -DTVP0662 |
| 28 | WFLX-DT | WEST PALM BEACH FL | 244.3 | PLN | DTVPLN | -DTVP0663 |
| 29 | WFTS-DT | TAMPA FL           | 0.0   | PLN | DTVPLN | -DTVP0697 |
| 31 | WGPU-DT | FORT MYERS FL      | 124.4 | PLN | DTVPLN | -DTVP0769 |
| 35 | WFTX-DT | CAPE CORAL FL      | 125.0 | PLN | DTVPLN | -DTVP0915 |
| 42 | WFCT-DT | BRADENTON FL       | 48.2  | PLN | DTVPLN | -DTVP1124 |
| 20 | WBBHTV  | FORT MYERS FL      | 123.4 | PLN | DTVPLN | -NPLN0242 |
| 21 | WTCE    | FORT PIERCE FL     | 192.6 | PLN | DTVPLN | -NPLN0244 |
| 30 | WGPU    | FORT MYERS FL      | 124.4 | PLN | DTVPLN | -NPLN0256 |
| 36 | WFTX    | CAPE CORAL FL      | 125.0 | PLN | DTVPLN | -NPLN0266 |
| 27 | WZKY    | ORLANDO FL         | 86.6  | PLN | DTVPLN | -NPLN0349 |
| 32 | WWWB    | LAKELAND FL        | 30.9  | PLN | DTVPLN | -NPLN0359 |
| 35 | WOFL    | ORLANDO FL         | 143.0 | PLN | DTVPLN | -NPLN0365 |
| 43 | WBSF    | MELBOURNE FL       | 142.1 | PLN | DTVPLN | -NPLN0373 |

|                                |            |              |     |
|--------------------------------|------------|--------------|-----|
| Results for: 28N FL TAMPA      | DTVPLN     | NPLN0352     | PLN |
|                                | POPULATION | AREA (sq km) |     |
| within Noise Limited Contour   | 3078997    | 27072.7      |     |
| not affected by terrain losses | 3078649    | 27060.7      |     |
| lost to NTSC IX                | 164836     | 4627.4       |     |
| lost to additional IX by ATV   | 712        | 12.0         |     |
| lost to all IX                 | 165548     | 4639.4       |     |

#### Analysis of current record

| Channel | Call    | City/State | Application | Ref. No.    |
|---------|---------|------------|-------------|-------------|
| 28      | WFTS-TV | TAMPA FL   | BPCT        | -19960702KP |

#### Stations Potentially Affecting This Station

| Chan | Call    | City/State         | Dist(km) | Status | Application | Ref. No.     |
|------|---------|--------------------|----------|--------|-------------|--------------|
| 20   | WBBH-TV | FORT MYERS FL      | 123.3    | CP     | BPCT        | -19990709LC  |
| 21   | WCLF    | CLEARWATER FL      | 2.5      | CP     | BPCDT       | -19991101AHE |
| 21   | WCLF-DT | CLEARWATER FL      | 61.9     | PLN    | DTVPLN      | -DTVP0409    |
| 21   | WTCE    | FORT PIERCE FL     | 192.6    | LIC    | BLET        | -19900510KE  |
| 24   | WTSP-DT | ST. PETERSBURG FL  | 61.9     | PLN    | DTVPLN      | -DTVP0528    |
| 24   | WTSP    | ST. PETERSBURG FL  | 61.9     | CP MOD | BMPCDT      | -20000501AFO |
| 25   | WVEA-DT | VENICE FL          | 2.5      | CP     | BPCDT       | -19991029ACK |
| 25   | WBSV-DT | VENICE FL          | 83.2     | PLN    | DTVPLN      | -DTVP0563    |
| 27   | WRDQ    | ORLANDO FL         | 130.9    | CP MOD | BMPCT       | -19950612KG  |
| 28   | WGFL-DT | HIGH SPRINGS FL    | 201.0    | PLN    | DTVPLN      | -DTVP0662    |
| 28   | WGFL-DT | HIGH SPRINGS FL    | 200.9    | CP     | BPCDT       | -19980910KE  |
| 28   | WFLX    | WEST PALM BEACH FL | 244.3    | CP MOD | BMPCDT      | -19990910AAN |
| 28   | WFLX-DT | WEST PALM BEACH FL | 244.3    | PLN    | DTVPLN      | -DTVP0663    |
| 29   | NEW     | GAINESVILLE FL     | 201.0    | ADD    | BPRM        | -20000717ACS |
| 29   | WFTS-DT | TAMPA FL           | 0.0      | CP MOD | BMPCDT      | -19991230ABA |
| 29   | WFTS-DT | TAMPA FL           | 0.0      | PLN    | DTVPLN      | -DTVP0697    |
| 30   | WGPU    | FORT MYERS FL      | 124.4    | LIC    | BLET        | -19830630KG  |
| 31   | WGPU-DT | FORT MYERS FL      | 124.4    | PLN    | DTVPLN      | -DTVP0769    |
| 32   | WWWB    | LAKELAND FL        | 30.9     | LIC    | BLCT        | -19860909LB  |
| 35   | WFTX    | CAPE CORAL FL      | 125.0    | CP     | BPCDT       | -19991028ADX |
| 35   | WFTX-DT | CAPE CORAL FL      | 125.0    | PLN    | DTVPLN      | -DTVP0915    |
| 35   | WOFL    | ORLANDO FL         | 143.0    | CP     | BPCT        | -19960626KE  |
| 36   | WFTX    | CAPE CORAL FL      | 125.0    | CP     | BPCT        | -20000912AAI |
| 42   | WXPX    | BRADENTON FL       | 2.5      | APP    | BPCT        | -19980708KH  |

|    |         |               |       |     |        |              |
|----|---------|---------------|-------|-----|--------|--------------|
| 42 | WFCT-DT | BRADENTON FL  | 48.2  | PLN | DTVPLN | -DTVP1124    |
| 42 | WXPX    | BRADENTON FL  | 2.5   | CP  | BPCDT  | -19990602KF  |
| 42 | WXPX    | BRADENTON FL  | 2.5   | APP | BPCT   | -20020215AAZ |
| 43 | WBSF    | MELBOURNE FL  | 142.1 | LIC | BLCT   | -19980422KG  |
| 43 | WINQ-CA | Palm Beach FL | 224.7 | CPM | CUR    | -PROPOSED    |

Proposal causes no interference

#####

## Analysis of Interference to Affected Station 2

### Analysis of current record

| Channel | Call    | City/State | Application | Ref. No.    |
|---------|---------|------------|-------------|-------------|
| 28      | WFTS-TV | TAMPA FL   | BLCT        | -19880303KE |

### Stations Potentially Affecting This Station

| Chan | Call    | City/State         | Dist(km) | Status | Application | Ref. No.     |
|------|---------|--------------------|----------|--------|-------------|--------------|
| 20   | WBBH-TV | FORT MYERS FL      | 123.3    | CP     | BPCT        | -19990709LC  |
| 21   | WCLF    | CLEARWATER FL      | 2.5      | CP     | BPCDT       | -19991101AHE |
| 21   | WCLF-DT | CLEARWATER FL      | 61.9     | PLN    | DTVPLN      | -DTVP0409    |
| 21   | WTCE    | FORT PIERCE FL     | 192.6    | LIC    | BLET        | -19900510KE  |
| 24   | WTSP-DT | ST. PETERSBURG FL  | 61.9     | PLN    | DTVPLN      | -DTVP0528    |
| 24   | WTSP    | ST. PETERSBURG FL  | 61.9     | CP MOD | BMPCDT      | -20000501AFO |
| 25   | WVEA-DT | VENICE FL          | 2.5      | CP     | BPCDT       | -19991029ACK |
| 25   | WBSV-DT | VENICE FL          | 83.2     | PLN    | DTVPLN      | -DTVP0563    |
| 27   | WRDQ    | ORLANDO FL         | 130.9    | CP MOD | BMPCT       | -19950612KG  |
| 28   | WGFL-DT | HIGH SPRINGS FL    | 201.0    | PLN    | DTVPLN      | -DTVP0662    |
| 28   | WGFL-DT | HIGH SPRINGS FL    | 200.9    | CP     | BPCDT       | -19980910KE  |
| 28   | WFLX    | WEST PALM BEACH FL | 244.3    | CP MOD | BMPCDT      | -19990910AAN |
| 28   | WFLX-DT | WEST PALM BEACH FL | 244.3    | PLN    | DTVPLN      | -DTVP0663    |
| 29   | NEW     | GAINESVILLE FL     | 201.0    | ADD    | BPRM        | -20000717ACS |
| 29   | WFTS-DT | TAMPA FL           | 0.0      | CP MOD | BMPCDT      | -19991230ABA |
| 29   | WFTS-DT | TAMPA FL           | 0.0      | PLN    | DTVPLN      | -DTVP0697    |
| 30   | WGCW    | FORT MYERS FL      | 124.4    | LIC    | BLET        | -19830630KG  |
| 31   | WGCW-DT | FORT MYERS FL      | 124.4    | PLN    | DTVPLN      | -DTVP0769    |
| 32   | WWWB    | LAKELAND FL        | 30.9     | LIC    | BLCT        | -19860909LB  |
| 35   | WFTX    | CAPE CORAL FL      | 125.0    | CP     | BPCDT       | -19991028ADX |
| 35   | WFTX-DT | CAPE CORAL FL      | 125.0    | PLN    | DTVPLN      | -DTVP0915    |
| 35   | WOFL    | ORLANDO FL         | 143.0    | CP     | BPCT        | -19960626KE  |
| 36   | WFTX    | CAPE CORAL FL      | 125.0    | CP     | BPCT        | -20000912AAI |
| 42   | WXPX    | BRADENTON FL       | 2.5      | APP    | BPCT        | -19980708KH  |
| 42   | WFCT-DT | BRADENTON FL       | 48.2     | PLN    | DTVPLN      | -DTVP1124    |
| 42   | WXPX    | BRADENTON FL       | 2.5      | CP     | BPCDT       | -19990602KF  |
| 42   | WXPX    | BRADENTON FL       | 2.5      | APP    | BPCT        | -20020215AAZ |
| 43   | WBSF    | MELBOURNE FL       | 142.1    | LIC    | BLCT        | -19980422KG  |
| 43   | WINQ-CA | Palm Beach FL      | 224.7    | CPM    | CUR         | -PROPOSED    |

Proposal causes no interference

#####

## Analysis of Interference to Affected Station 3

## Analysis of current record

|         |         |              |                      |
|---------|---------|--------------|----------------------|
| Channel | Call    | City/State   | Application Ref. No. |
| 29      | WMVJ-LP | MELBOURNE FL | BLTTL -20010711ACI   |

## Stations Potentially Affecting This Station

| Chan | Call    | City/State          | Dist(km) | Status | Application Ref. No. |
|------|---------|---------------------|----------|--------|----------------------|
| 21   | WTCE    | FORT PIERCE FL      | 85.0     | LIC    | BLET -19900510KE     |
| 22   | WCLF    | CLEARWATER FL       | 156.9    | LIC    | BLCT -20000124AAX    |
| 22   | WOFL-DT | ORLANDO FL          | 64.1     | PLN    | DTVPLN -DTVP0449     |
| 22   | WOFL-DT | ORLANDO FL          | 63.9     | LIC    | BLCDDT -20000706AEZ  |
| 27   | WRDQ    | ORLANDO FL          | 35.1     | CP MOD | BMPCT -19950612KG    |
| 28   | WFTS-TV | TAMPA FL            | 156.6    | CP     | BPCT -19960702KP     |
| 28   | WFLX    | WEST PALM BEACH FL  | 179.3    | CP MOD | BMPCDDT -19990910AAN |
| 28   | WFLX-DT | WEST PALM BEACH FL  | 179.3    | PLN    | DTVPLN -DTVP0663     |
| 29   | NEW     | GAINESVILLE FL      | 246.2    | ADD    | BPRM -20000717ACS    |
| 29   | WFTS-DT | TAMPA FL            | 156.5    | CP MOD | BMPCDDT -19991230ABA |
| 29   | WFTS-DT | TAMPA FL            | 156.6    | PLN    | DTVPLN -DTVP0697     |
| 29   | WFLX    | WEST PALM BEACH FL  | 179.3    | CP     | BPCT -19990910AAA    |
| 30   | WBCC    | COCOA FL            | 63.0     | CP     | BPEDT -20000427ACN   |
| 30   | WBCC-DT | COCOA FL            | 27.9     | PLN    | DTVPLN -DTVP0733     |
| 30   | WGPU    | FORT MYERS FL       | 180.3    | LIC    | BLET -19830630KG     |
| 32   | WWWB    | LAKELAND FL         | 126.7    | LIC    | BLCT -19860909LB     |
| 33   | WCEU    | NEW SMYRNA BEACH FL | 63.0     | CP     | BPEDT -20000412AAQ   |
| 33   | WCEU-DT | NEW SMYRNA BEACH FL | 123.3    | PLN    | DTVPLN -DTVP0845     |
| 36   | WFTX    | CAPE CORAL FL       | 184.4    | CP     | BPCT -20000912AAI    |
| 43   | WBSF    | MELBOURNE FL        | 27.8     | LIC    | BLCT -19980422KG     |
| 44   | WTOG    | ST. PETERSBURG FL   | 157.2    | LIC    | BLCT -19990415KI     |
| 43   | WINQ-CA | Palm Beach FL       | 134.0    | CPM    | CUR -PROPOSED        |

Proposed station is beyond the site to  
nearest cell evaluation distance

#####

## Analysis of Interference to Affected Station 4

## Analysis of current record

|         |       |            |                      |
|---------|-------|------------|----------------------|
| Channel | Call  | City/State | Application Ref. No. |
| 29      | W29CL | ORLANDO FL | BLTTL -20001020AAD   |

## Stations Potentially Affecting This Station

| Chan | Call    | City/State       | Dist(km) | Status | Application Ref. No. |
|------|---------|------------------|----------|--------|----------------------|
| 21   | WCLF    | CLEARWATER FL    | 117.8    | CP     | BPCDDT -19991101AHE  |
| 21   | WCLF-DT | CLEARWATER FL    | 140.8    | PLN    | DTVPLN -DTVP0409     |
| 22   | WCLF    | CLEARWATER FL    | 117.8    | LIC    | BLCT -20000124AAX    |
| 22   | WOFL-DT | ORLANDO FL       | 29.4     | PLN    | DTVPLN -DTVP0449     |
| 22   | WOFL-DT | ORLANDO FL       | 29.5     | LIC    | BLCDDT -20000706AEZ  |
| 25   | WVEA-DT | VENICE FL        | 117.8    | CP     | BPCDDT -19991029ACK  |
| 26   | WNTD    | DAYTONA BEACH FL | 83.6     | CP     | BPCT -19960709KS     |
| 27   | WRDQ    | ORLANDO FL       | 45.3     | CP MOD | BMPCT -19950612KG    |
| 28   | WGFL-DT | HIGH SPRINGS FL  | 167.7    | PLN    | DTVPLN -DTVP0662     |
| 28   | WGFL-DT | HIGH SPRINGS FL  | 167.7    | CP     | BPCDDT -19980910KE   |
| 28   | WFTS-TV | TAMPA FL         | 116.2    | CP     | BPCT -19960702KP     |

|    |         |                     |       |        |        |              |
|----|---------|---------------------|-------|--------|--------|--------------|
| 29 | NEW     | GAINESVILLE FL      | 167.7 | ADD    | BPRM   | -20000717ACS |
| 29 | WFTS-DT | TAMPA FL            | 116.2 | CP MOD | BMPCDT | -19991230ABA |
| 29 | WFTS-DT | TAMPA FL            | 116.2 | PLN    | DTVPLN | -DTVP0697    |
| 29 | WFLX    | WEST PALM BEACH FL  | 245.3 | CP     | BPCT   | -19990910AAA |
| 30 | WBCC    | COCOA FL            | 32.1  | CP     | BPEDT  | -20000427ACN |
| 30 | WBCC-DT | COCOA FL            | 52.4  | PLN    | DTVPLN | -DTVP0733    |
| 30 | WGCU    | FORT MYERS FL       | 195.4 | LIC    | BLET   | -19830630KG  |
| 30 | WAWS    | JACKSONVILLE FL     | 194.3 | CP MOD | BMPCT  | -20011120AAF |
| 31 | WOGX    | OCALA FL            | 129.6 | CP MOD | BMPCDT | -20010320AAK |
| 31 | WOGX-DT | OCALA FL            | 129.8 | PLN    | DTVPLN | -DTVP0770    |
| 32 | WWWB    | LAKELAND FL         | 95.9  | LIC    | BLCT   | -19860909LB  |
| 33 | WCEU    | NEW SMYRNA BEACH FL | 32.1  | CP     | BPEDT  | -20000412AAQ |
| 33 | WCEU-DT | NEW SMYRNA BEACH FL | 73.6  | PLN    | DTVPLN | -DTVP0845    |
| 36 | WFTX    | CAPE CORAL FL       | 198.4 | CP     | BPCT   | -20000912AAI |
| 43 | WBSF    | MELBOURNE FL        | 52.5  | LIC    | BLCT   | -19980422KG  |
| 44 | WJEB-TV | JACKSONVILLE FL     | 193.8 | APP    | BPET   | -20020523AAR |
| 44 | WTOG    | ST. PETERSBURG FL   | 117.4 | LIC    | BLCT   | -19990415KI  |
| 43 | WINQ-CA | Palm Beach FL       | 205.6 | CPM    | CUR    | -PROPOSED    |

Proposed station is beyond the site to  
nearest cell evaluation distance

#####

#### Analysis of Interference to Affected Station 5

#### NTSC Baseline Analysis

| Channel | Call | City/State         | Application | Ref. No.  |
|---------|------|--------------------|-------------|-----------|
| 29      | WFLX | WEST PALM BEACH FL | DTVPLN      | -NPLN0354 |

#### Stations Potentially Affecting This Station

| Chan | Call    | City/State         | Dist(km) | Status | Application | Ref. No.  |
|------|---------|--------------------|----------|--------|-------------|-----------|
| 22   | WFOR-DT | MIAMI FL           | 67.6     | PLN    | DTVPLN      | -DTVP0448 |
| 26   | WCTD-DT | MIAMI FL           | 99.4     | PLN    | DTVPLN      | -DTVP0594 |
| 27   | WXEL-DT | WEST PALM BEACH FL | 0.0      | PLN    | DTVPLN      | -DTVP0630 |
| 28   | WFLX-DT | WEST PALM BEACH FL | 0.0      | PLN    | DTVPLN      | -DTVP0663 |
| 29   | WFTS-DT | TAMPA FL           | 244.3    | PLN    | DTVPLN      | -DTVP0697 |
| 30   | WBCC-DT | COCOA FL           | 203.4    | PLN    | DTVPLN      | -DTVP0733 |
| 30   | WTVJ-DT | MIAMI FL           | 117.5    | PLN    | DTVPLN      | -DTVP0734 |
| 32   | WBFS-DT | MIAMI FL           | 67.9     | PLN    | DTVPLN      | -DTVP0809 |
| 36   | WHBI-DT | LAKE WORTH FL      | 23.0     | PLN    | DTVPLN      | -DTVP0952 |
| 44   | WPPB-DT | BOCA RATON FL      | 65.3     | PLN    | DTVPLN      | -DTVP1193 |
| 21   | WTCE    | FORT PIERCE FL     | 96.1     | PLN    | DTVPLN      | -NPLN0244 |
| 30   | WGCU    | FORT MYERS FL      | 153.2    | PLN    | DTVPLN      | -NPLN0256 |
| 36   | WFTX    | CAPE CORAL FL      | 156.7    | PLN    | DTVPLN      | -NPLN0266 |
| 26   | WZVNTV  | NAPLES FL          | 139.1    | PLN    | DTVPLN      | -NPLN0347 |
| 33   | WBFSTV  | MIAMI FL           | 67.9     | PLN    | DTVPLN      | -NPLN0360 |
| 43   | WBSF    | MELBOURNE FL       | 203.4    | PLN    | DTVPLN      | -NPLN0373 |

|                                     |            |              |     |
|-------------------------------------|------------|--------------|-----|
| Results for: 29N FL WEST PALM BEACH | DTVPLN     | NPLN0354     | PLN |
|                                     | POPULATION | AREA (sq km) |     |
| within Noise Limited Contour        | 3869360    | 24721.3      |     |
| not affected by terrain losses      | 3869360    | 24721.3      |     |
| lost to NTSC IX                     | 18900      | 39.9         |     |

|                              |       |      |
|------------------------------|-------|------|
| lost to additional IX by ATV | 66490 | 55.9 |
| lost to all IX               | 85390 | 95.8 |

#### Analysis of current record

| Channel | Call | City/State         | Application | Ref. No.     |
|---------|------|--------------------|-------------|--------------|
| 29      | WFLX | WEST PALM BEACH FL | BPCT        | -19990910AAA |

#### Stations Potentially Affecting This Station

| Chan | Call    | City/State         | Dist(km) | Status | Application | Ref. No.     |
|------|---------|--------------------|----------|--------|-------------|--------------|
| 21   | WTCE    | FORT PIERCE FL     | 96.1     | LIC    | BLET        | -19900510KE  |
| 22   | WFOR-DT | MIAMI FL           | 67.6     | PLN    | DTVPLN      | -DTVP0448    |
| 26   | WPXM-DT | MIAMI FL           | 67.6     | APP    | BPCDT       | -19991020ACC |
| 26   | WCTD-DT | MIAMI FL           | 99.4     | PLN    | DTVPLN      | -DTVP0594    |
| 26   | WZVN-TV | NAPLES FL          | 139.1    | LIC    | BLCT        | -19890711KI  |
| 27   | WXEL-DT | WEST PALM BEACH FL | 0.0      | APP    | BPEDT       | -20000403AAT |
| 27   | WXEL-DT | WEST PALM BEACH FL | 0.0      | PLN    | DTVPLN      | -DTVP0630    |
| 28   | WFLX    | WEST PALM BEACH FL | 0.0      | CP MOD | BMPCDT      | -19990910AAN |
| 28   | WFLX-DT | WEST PALM BEACH FL | 0.0      | PLN    | DTVPLN      | -DTVP0663    |
| 29   | WFTS-DT | TAMPA FL           | 244.2    | CP MOD | BMPCDT      | -19991230ABA |
| 29   | WFTS-DT | TAMPA FL           | 244.3    | PLN    | DTVPLN      | -DTVP0697    |
| 30   | WBCC-DT | COCOA FL           | 203.4    | PLN    | DTVPLN      | -DTVP0733    |
| 30   | WGPU    | FORT MYERS FL      | 153.2    | LIC    | BLET        | -19830630KG  |
| 30   | WTVJ-DT | MIAMI FL           | 117.5    | PLN    | DTVPLN      | -DTVP0734    |
| 31   | WTVJ    | MIAMI FL           | 67.6     | APP    | BPRM        | -20000418AAA |
| 31   | WTVJ    | MIAMI FL           | 67.9     | APP    | BPRM        | -20000328AAY |
| 32   | WBFS-DT | MIAMI FL           | 67.8     | CP MOD | BMPCDT      | -20011010AAG |
| 32   | WBFS-DT | MIAMI FL           | 67.9     | PLN    | DTVPLN      | -DTVP0809    |
| 33   | WBFS-TV | MIAMI FL           | 67.9     | LIC    | BLCT        | -19850125KE  |
| 36   | WFTX    | CAPE CORAL FL      | 156.7    | CP     | BPCT        | -20000912AAI |
| 36   | WPXP-DT | LAKE WORTH FL      | 3.3      | APP    | BMPCDT      | -20020501AAH |
| 36   | WHBI-DT | LAKE WORTH FL      | 23.0     | PLN    | DTVPLN      | -DTVP0952    |
| 36   | WPXP    | LAKE WORTH FL      | 3.3      | CP     | BPCDT       | -19991027ADA |
| 43   | WBSF    | MELBOURNE FL       | 203.3    | LIC    | BLCT        | -19980422KG  |
| 44   | WPPB-DT | BOCA RATON FL      | 65.3     | CP     | BPEDT       | -19991028ACM |
| 44   | WPPB-DT | BOCA RATON FL      | 65.3     | PLN    | DTVPLN      | -DTVP1193    |
| 43   | WINQ-CA | Palm Beach FL      | 50.3     | CPM    | CUR         | -PROPOSED    |

Proposal causes no interference

#####

#### Analysis of Interference to Affected Station 6

#### Analysis of current record

| Channel | Call | City/State         | Application | Ref. No.    |
|---------|------|--------------------|-------------|-------------|
| 29      | WFLX | WEST PALM BEACH FL | BLCT        | -19860514KH |

#### Stations Potentially Affecting This Station

| Chan | Call    | City/State     | Dist(km) | Status | Application | Ref. No.     |
|------|---------|----------------|----------|--------|-------------|--------------|
| 21   | WTCE    | FORT PIERCE FL | 96.1     | LIC    | BLET        | -19900510KE  |
| 22   | WFOR-DT | MIAMI FL       | 67.6     | PLN    | DTVPLN      | -DTVP0448    |
| 26   | WPXM-DT | MIAMI FL       | 67.6     | APP    | BPCDT       | -19991020ACC |
| 26   | WCTD-DT | MIAMI FL       | 99.4     | PLN    | DTVPLN      | -DTVP0594    |
| 26   | WZVN-TV | NAPLES FL      | 139.1    | LIC    | BLCT        | -19890711KI  |

|    |         |                    |       |        |        |              |
|----|---------|--------------------|-------|--------|--------|--------------|
| 27 | WXEL-DT | WEST PALM BEACH FL | 0.0   | APP    | BPEDT  | -20000403AAT |
| 27 | WXEL-DT | WEST PALM BEACH FL | 0.0   | PLN    | DTVPLN | -DTVP0630    |
| 28 | WFLX    | WEST PALM BEACH FL | 0.0   | CP MOD | BMPCDT | -19990910AAN |
| 28 | WFLX-DT | WEST PALM BEACH FL | 0.0   | PLN    | DTVPLN | -DTVP0663    |
| 29 | WFTS-DT | TAMPA FL           | 244.2 | CP MOD | BMPCDT | -19991230ABA |
| 29 | WFTS-DT | TAMPA FL           | 244.3 | PLN    | DTVPLN | -DTVP0697    |
| 30 | WBCC-DT | COCOA FL           | 203.4 | PLN    | DTVPLN | -DTVP0733    |
| 30 | WGPU    | FORT MYERS FL      | 153.2 | LIC    | BLET   | -19830630KG  |
| 30 | WTVJ-DT | MIAMI FL           | 117.5 | PLN    | DTVPLN | -DTVP0734    |
| 31 | WTVJ    | MIAMI FL           | 67.6  | APP    | BPRM   | -20000418AAA |
| 31 | WTVJ    | MIAMI FL           | 67.9  | APP    | BPRM   | -20000328AAY |
| 32 | WBFS-DT | MIAMI FL           | 67.8  | CP MOD | BMPCDT | -20011010AAG |
| 32 | WBFS-DT | MIAMI FL           | 67.9  | PLN    | DTVPLN | -DTVP0809    |
| 33 | WBFS-TV | MIAMI FL           | 67.9  | LIC    | BLCT   | -19850125KE  |
| 36 | WFTX    | CAPE CORAL FL      | 156.7 | CP     | BPCT   | -20000912AAI |
| 36 | WPXP-DT | LAKE WORTH FL      | 3.3   | APP    | BMPCDT | -20020501AAH |
| 36 | WHBI-DT | LAKE WORTH FL      | 23.0  | PLN    | DTVPLN | -DTVP0952    |
| 36 | WPXP    | LAKE WORTH FL      | 3.3   | CP     | BPCDT  | -19991027ADA |
| 43 | WBSF    | MELBOURNE FL       | 203.3 | LIC    | BLCT   | -19980422KG  |
| 44 | WPPB-DT | BOCA RATON FL      | 65.3  | CP     | BPEDT  | -19991028ACM |
| 44 | WPPB-DT | BOCA RATON FL      | 65.3  | PLN    | DTVPLN | -DTVP1193    |
| 43 | WINQ-CA | Palm Beach FL      | 50.3  | CPM    | CUR    | -PROPOSED    |

Proposal causes no interference

#####

# Analysis of Interference to Affected Station 7

## NTSC Baseline Analysis

| Channel | Call | City/State    | Application | Ref. No.  |
|---------|------|---------------|-------------|-----------|
| 36      | WFTX | CAPE CORAL FL | DTVPLN      | -NPLN0266 |

## Stations Potentially Affecting This Station

| Chan | Call    | City/State         | Dist(km) | Status | Application | Ref. No.  |
|------|---------|--------------------|----------|--------|-------------|-----------|
| 29   | WFTS-DT | TAMPA FL           | 125.0    | PLN    | DTVPLN      | -DTVP0697 |
| 33   | WRXY-DT | TICE FL            | 1.3      | PLN    | DTVPLN      | -DTVP0846 |
| 34   | WUSF-DT | TAMPA FL           | 125.6    | PLN    | DTVPLN      | -DTVP0880 |
| 35   | WFTX-DT | CAPE CORAL FL      | 0.0      | PLN    | DTVPLN      | -DTVP0915 |
| 36   | WUFT-DT | GAINESVILLE FL     | 329.1    | PLN    | DTVPLN      | -DTVP0951 |
| 36   | WHBI-DT | LAKE WORTH FL      | 170.8    | PLN    | DTVPLN      | -DTVP0952 |
| 51   | WSCV    | FORT LAUDERDALE FL | 183.3    | PLN    | DTVPLN      | -NPLN0277 |
| 28   | WFTS    | TAMPA FL           | 125.0    | PLN    | DTVPLN      | -NPLN0352 |
| 29   | WFLX    | WEST PALM BEACH FL | 156.7    | PLN    | DTVPLN      | -NPLN0354 |
| 35   | WCTD    | MIAMI FL           | 192.9    | PLN    | DTVPLN      | -NPLN0364 |
| 38   | WTTA    | ST. PETERSBURG FL  | 125.0    | PLN    | DTVPLN      | -NPLN0367 |
| 40   | WWSB    | SARASOTA FL        | 101.5    | PLN    | DTVPLN      | -NPLN0370 |
| 43   | WBSF    | MELBOURNE FL       | 189.5    | PLN    | DTVPLN      | -NPLN0373 |
| 44   | WTOG    | ST. PETERSBURG FL  | 123.8    | PLN    | DTVPLN      | -NPLN0375 |
| 50   | WBHSTV  | TAMPA FL           | 125.0    | PLN    | DTVPLN      | -NPLN0384 |

|                                |            |              |     |
|--------------------------------|------------|--------------|-----|
| Results for: 36N FL CAPE CORAL | DTVPLN     | NPLN0266     | PLN |
|                                | POPULATION | AREA (sq km) |     |
| within Noise Limited Contour   | 879142     | 24096.8      |     |
| not affected by terrain losses | 879142     | 24096.8      |     |

|                              |      |       |
|------------------------------|------|-------|
| lost to NTSC IX              | 9151 | 189.8 |
| lost to additional IX by ATV | 0    | 0.0   |
| lost to all IX               | 9151 | 189.8 |

#### Analysis of current record

| Channel | Call | City/State    | Application | Ref. No.     |
|---------|------|---------------|-------------|--------------|
| 36      | WFTX | CAPE CORAL FL | BPCT        | -20000912AAI |

#### Stations Potentially Affecting This Station

| Chan | Call    | City/State         | Dist(km) | Status | Application | Ref. No.     |
|------|---------|--------------------|----------|--------|-------------|--------------|
| 28   | WFTS-TV | TAMPA FL           | 125.0    | CP     | BPCT        | -19960702KP  |
| 29   | WFTS-DT | TAMPA FL           | 125.0    | CP MOD | BMPCDT      | -19991230ABA |
| 29   | WFTS-DT | TAMPA FL           | 125.0    | PLN    | DTVPLN      | -DTVP0697    |
| 29   | WFLX    | WEST PALM BEACH FL | 156.7    | CP     | BPCT        | -19990910AAA |
| 33   | WRXY-DT | TICE FL            | 1.2      | CP     | BPCDT       | -19991028AFP |
| 33   | WRXY-DT | TICE FL            | 1.2      | PLN    | DTVPLN      | -DTVP0846    |
| 34   | WUSF-DT | TAMPA FL           | 125.6    | CP     | BPEDT       | -19991217ACB |
| 34   | WUSF-DT | TAMPA FL           | 125.6    | PLN    | DTVPLN      | -DTVP0880    |
| 35   | WFTX    | CAPE CORAL FL      | 0.0      | CP     | BPCDT       | -19991028ADX |
| 35   | WFTX-DT | CAPE CORAL FL      | 0.0      | PLN    | DTVPLN      | -DTVP0915    |
| 35   | WPXM    | MIAMI FL           | 192.9    | LIC    | BLCT        | -19921026KE  |
| 36   | WUFT-DT | GAINESVILLE FL     | 329.1    | PLN    | DTVPLN      | -DTVP0951    |
| 36   | WPXP-DT | LAKE WORTH FL      | 159.5    | APP    | BMPCDT      | -20020501AAH |
| 36   | WHBI-DT | LAKE WORTH FL      | 170.9    | PLN    | DTVPLN      | -DTVP0952    |
| 36   | WPXP    | LAKE WORTH FL      | 159.5    | CP     | BPCDT       | -19991027ADA |
| 38   | WTTA    | ST. PETERSBURG FL  | 125.0    | CP     | BPCT        | -19950629KQ  |
| 40   | WWSB    | SARASOTA FL        | 101.2    | CP     | BPCT        | -19991012AAS |
| 43   | WBSF    | MELBOURNE FL       | 189.4    | LIC    | BLCT        | -19980422KG  |
| 44   | WTOG    | ST. PETERSBURG FL  | 123.8    | LIC    | BLCT        | -19990415KI  |
| 50   | WBHS-TV | TAMPA FL           | 125.0    | CP     | BPCT        | -19960710KG  |
| 51   | WSCV    | FORT LAUDERDALE FL | 183.6    | CP MOD | BMPCT       | -20010301ABZ |
| 43   | WINQ-CA | Palm Beach FL      | 162.9    | CPM    | CUR         | -PROPOSED    |

Proposal causes no interference

#####

#### Analysis of Interference to Affected Station 8

#### Analysis of current record

| Channel | Call | City/State    | Application | Ref. No.    |
|---------|------|---------------|-------------|-------------|
| 36      | WFTX | CAPE CORAL FL | BLCT        | -19880310KG |

#### Stations Potentially Affecting This Station

| Chan | Call    | City/State         | Dist(km) | Status | Application | Ref. No.     |
|------|---------|--------------------|----------|--------|-------------|--------------|
| 28   | WFTS-TV | TAMPA FL           | 125.0    | CP     | BPCT        | -19960702KP  |
| 29   | WFTS-DT | TAMPA FL           | 125.0    | CP MOD | BMPCDT      | -19991230ABA |
| 29   | WFTS-DT | TAMPA FL           | 125.0    | PLN    | DTVPLN      | -DTVP0697    |
| 29   | WFLX    | WEST PALM BEACH FL | 156.7    | CP     | BPCT        | -19990910AAA |
| 33   | WRXY-DT | TICE FL            | 1.3      | CP     | BPCDT       | -19991028AFP |
| 33   | WRXY-DT | TICE FL            | 1.3      | PLN    | DTVPLN      | -DTVP0846    |
| 34   | WUSF-DT | TAMPA FL           | 125.6    | CP     | BPEDT       | -19991217ACB |
| 34   | WUSF-DT | TAMPA FL           | 125.6    | PLN    | DTVPLN      | -DTVP0880    |
| 35   | WFTX    | CAPE CORAL FL      | 0.0      | CP     | BPCDT       | -19991028ADX |



|    |         |                    |       |        |        |              |
|----|---------|--------------------|-------|--------|--------|--------------|
| 35 | WFTX-DT | CAPE CORAL FL      | 0.0   | PLN    | DTVPLN | -DTVP0915    |
| 35 | WPXM    | MIAMI FL           | 192.9 | LIC    | BLCT   | -19921026KE  |
| 36 | WUFT-DT | GAINESVILLE FL     | 329.1 | PLN    | DTVPLN | -DTVP0951    |
| 36 | WPXP-DT | LAKE WORTH FL      | 159.4 | APP    | BMPCDT | -20020501AAH |
| 36 | WHBI-DT | LAKE WORTH FL      | 170.8 | PLN    | DTVPLN | -DTVP0952    |
| 36 | WPXP    | LAKE WORTH FL      | 159.4 | CP     | BPCDT  | -19991027ADA |
| 38 | WTTA    | ST. PETERSBURG FL  | 125.0 | CP     | BPCT   | -19950629KQ  |
| 40 | WWSB    | SARASOTA FL        | 101.2 | CP     | BPCT   | -19991012AAS |
| 43 | WBSF    | MELBOURNE FL       | 189.4 | LIC    | BLCT   | -19980422KG  |
| 44 | WTOG    | ST. PETERSBURG FL  | 123.8 | LIC    | BLCT   | -19990415KI  |
| 50 | WBHS-TV | TAMPA FL           | 125.0 | CP     | BPCT   | -19960710KG  |
| 51 | WSCV    | FORT LAUDERDALE FL | 183.6 | CP MOD | BMPCT  | -20010301ABZ |
| 43 | WINQ-CA | Palm Beach FL      | 162.8 | CPM    | CUR    | -PROPOSED    |

Proposal causes no interference

#####

#### Analysis of Interference to Affected Station 9

##### Analysis of current record

| Channel | Call    | City/State       | Application Ref. No. |
|---------|---------|------------------|----------------------|
| 36      | WZXZ-LP | ORLANDO, ETC. FL | BPTTL -20020325AAC   |

##### Stations Potentially Affecting This Station

| Chan | Call     | City/State          | Dist(km) | Status | Application Ref. No. |
|------|----------|---------------------|----------|--------|----------------------|
| 29   | NEW      | GAINESVILLE FL      | 186.4    | ADD    | BPRM -20000717ACS    |
| 33   | WCEU     | NEW SMYRNA BEACH FL | 3.5      | CP     | BPEDT -20000412AAQ   |
| 33   | WCEU-DT  | NEW SMYRNA BEACH FL | 66.3     | PLN    | DTVPLN -DTVP0845     |
| 35   | WOFL     | ORLANDO FL          | 2.9      | CP     | BPCT -19960626KE     |
| 36   | WFTX     | CAPE CORAL FL       | 211.0    | CP     | BPCT -20000912AAI    |
| 36   | WUFT-DT  | GAINESVILLE FL      | 179.2    | PLN    | DTVPLN -DTVP0951     |
| 36   | WPXP-DT  | LAKE WORTH FL       | 237.2    | APP    | BMPCDT -20020501AAH  |
| 36   | WHBI-DT  | LAKE WORTH FL       | 228.2    | PLN    | DTVPLN -DTVP0952     |
| 36   | WPXP     | LAKE WORTH FL       | 237.2    | CP     | BPCDT -19991027ADA   |
| 39   | 960919LB | CRYSTAL RIVER FL    | 128.3    | APP    | BPEDT -19960919LB    |
| 39   | WFTV     | ORLANDO FL          | 2.5      | LIC    | BLCDT -20010430ABF   |
| 39   | WFTV-DT  | ORLANDO FL          | 3.0      | PLN    | DTVPLN -DTVP1026     |
| 39   | WFTV     | ORLANDO FL          | 2.5      | CP MOD | BMPCDT -19991018ABA  |
| 40   | WACX     | LEESBURG FL         | 1.0      | CP     | BPCDT -19991004ABN   |
| 40   | WACX-DT  | LEESBURG FL         | 44.6     | PLN    | DTVPLN -DTVP1059     |
| 43   | WBSF     | MELBOURNE FL        | 34.5     | LIC    | BLCT -19980422KG     |
| 50   | WBHS-TV  | TAMPA FL            | 142.4    | CP     | BPCT -19960710KG     |
| 51   | WTGL-DT  | COCOA FL            | 34.3     | PLN    | DTVPLN -DTVP1403     |
| 51   | WOGX     | OCALA FL            | 149.6    | LIC    | BLCT -19831107KI     |
| 43   | WINQ-CA  | Palm Beach FL       | 194.1    | CPM    | CUR -PROPOSED        |

Proposed station is beyond the site to  
nearest cell evaluation distance

#####

#### Analysis of Interference to Affected Station 10

NTSC Baseline Analysis

|         |      |            |             |           |
|---------|------|------------|-------------|-----------|
| Channel | Call | City/State | Application | Ref. No.  |
| 39      | WDZL | MIAMI FL   | DTVPLN      | -NPLN0369 |

Stations Potentially Affecting This Station

| Chan | Call    | City/State         | Dist(km) | Status | Application | Ref. No.  |
|------|---------|--------------------|----------|--------|-------------|-----------|
| 32   | WBFS-DT | MIAMI FL           | 1.3      | PLN    | DTVPLN      | -DTVP0809 |
| 36   | WHBI-DT | LAKE WORTH FL      | 85.4     | PLN    | DTVPLN      | -DTVP0952 |
| 38   | WTCE-DT | FORT PIERCE FL     | 163.5    | PLN    | DTVPLN      | -DTVP0985 |
| 39   | WFTV-DT | ORLANDO FL         | 305.1    | PLN    | DTVPLN      | -DTVP1026 |
| 46   | WHFT-DT | MIAMI FL           | 5.5      | PLN    | DTVPLN      | -DTVP1257 |
| 47   | WYHS-DT | HOLLYWOOD FL       | 1.3      | PLN    | DTVPLN      | -DTVP1288 |
| 42   | WXELTV  | WEST PALM BEACH FL | 67.6     | PLN    | DTVPLN      | -NPLN0372 |
| 46   | WTVK    | NAPLES FL          | 149.2    | PLN    | DTVPLN      | -NPLN0378 |

|                                |            |              |     |
|--------------------------------|------------|--------------|-----|
| Results for: 39N FL MIAMI      | DTVPLN     | NPLN0369     | PLN |
|                                | POPULATION | AREA (sq km) |     |
| within Noise Limited Contour   | 3725022    | 14982.1      |     |
| not affected by terrain losses | 3725022    | 14982.1      |     |
| lost to NTSC IX                | 0          | 0.0          |     |
| lost to additional IX by ATV   | 0          | 0.0          |     |
| lost to all IX                 | 0          | 0.0          |     |

Analysis of current record

|         |      |            |             |             |
|---------|------|------------|-------------|-------------|
| Channel | Call | City/State | Application | Ref. No.    |
| 39      | WBZL | MIAMI FL   | BLCT        | -19970401LW |

Stations Potentially Affecting This Station

| Chan | Call     | City/State         | Dist(km) | Status | Application | Ref. No.     |
|------|----------|--------------------|----------|--------|-------------|--------------|
| 31   | WTVJ     | MIAMI FL           | 0.0      | APP    | BPRM        | -20000418AAA |
| 31   | WTVJ     | MIAMI FL           | 1.3      | APP    | BPRM        | -20000328AAY |
| 32   | WBFS-DT  | MIAMI FL           | 1.3      | CP MOD | BMPCDT      | -20011010AAG |
| 32   | WBFS-DT  | MIAMI FL           | 1.3      | PLN    | DTVPLN      | -DTVP0809    |
| 36   | WPXP-DT  | LAKE WORTH FL      | 69.0     | APP    | BMPCDT      | -20020501AAH |
| 36   | WHBI-DT  | LAKE WORTH FL      | 85.4     | PLN    | DTVPLN      | -DTVP0952    |
| 36   | WPXP     | LAKE WORTH FL      | 69.0     | CP     | BPCDT       | -19991027ADA |
| 38   | WTCE-DT  | FORT PIERCE FL     | 117.6    | CP     | BPEDT       | -20000103AAT |
| 38   | WTCE-DT  | FORT PIERCE FL     | 163.5    | PLN    | DTVPLN      | -DTVP0985    |
| 39   | 960919LB | CRYSTAL RIVER FL   | 369.6    | APP    | BPEDT       | -19960919LB  |
| 39   | WFTV     | ORLANDO FL         | 300.5    | LIC    | BLCDDT      | -20010430ABF |
| 39   | WFTV-DT  | ORLANDO FL         | 305.1    | PLN    | DTVPLN      | -DTVP1026    |
| 39   | WFTV     | ORLANDO FL         | 300.5    | CP MOD | BMPCDT      | -19991018ABA |
| 40   | WPPB-TV  | BOCA RATON FL      | 5.5      | APP    | BPRM        | -20000328AAE |
| 40   | WPPB-DT  | BOCA RATON FL      | 5.5      | APP    | BMPEDDT     | -20020201AAY |
| 42   | WXEL-TV  | WEST PALM BEACH FL | 67.6     | LIC    | BLET        | -19820625KF  |
| 46   | WHFT-DT  | MIAMI FL           | 5.5      | CP     | BPCDT       | -19990706KG  |
| 46   | WHFT-DT  | MIAMI FL           | 5.5      | PLN    | DTVPLN      | -DTVP1257    |
| 46   | WTVK     | NAPLES FL          | 181.0    | CP     | BPCT        | -19991123AGQ |
| 47   | WAMI-DT  | HOLLYWOOD FL       | 3.4      | APP    | BMPCDT      | -20011022AAN |
| 47   | WYHS-DT  | HOLLYWOOD FL       | 1.3      | PLN    | DTVPLN      | -DTVP1288    |
| 47   | WAMI-DT  | HOLLYWOOD FL       | 1.3      | CP     | BPCDT       | -19981030KF  |
| 54   | NEW      | LEHIGH ACRES FL    | 150.1    | ADD    | BPRM        | -19960725AAB |
| 43   | WINQ-CA  | Palm Beach FL      | 117.6    | CPM    | CUR         | -PROPOSED    |

Proposed station is beyond the site to  
nearest cell evaluation distance

#####

#### Analysis of Interference to Affected Station 11

##### Analysis of current record

| Channel | Call    | City/State | Application | Ref. No.     |
|---------|---------|------------|-------------|--------------|
| 41      | WJAN-CA | MIAMI FL   | BPTTA       | -20010116AGG |

##### Stations Potentially Affecting This Station

| Chan | Call    | City/State         | Dist(km) | Status | Application | Ref. No.     |
|------|---------|--------------------|----------|--------|-------------|--------------|
| 33   | WBFS-TV | MIAMI FL           | 30.2     | LIC    | BLCT        | -19850125KE  |
| 34   | WTVX    | FORT PIERCE FL     | 150.0    | LIC    | BLCT        | -19800624KF  |
| 38   | WTCE-DT | FORT PIERCE FL     | 141.3    | CP     | BPEDT       | -20000103AAT |
| 39   | WBZL    | MIAMI FL           | 29.5     | LIC    | BLCT        | -19970401LW  |
| 40   | WPPB-TV | BOCA RATON FL      | 34.8     | APP    | BPRM        | -20000328AAE |
| 40   | WPPB-DT | BOCA RATON FL      | 34.8     | APP    | BMPEDT      | -20020201AAY |
| 41   | WZVN-DT | NAPLES FL          | 177.4    | CP MOD | BMPCDT      | -20020227ABM |
| 41   | WZVN-DT | NAPLES FL          | 140.6    | PLN    | DTVPLN      | -DTVP1093    |
| 41   | WRBW-DT | ORLANDO FL         | 318.7    | PLN    | DTVPLN      | -DTVP1094    |
| 41   | WRBW-DT | ORLANDO FL         | 321.5    | CP     | BPCDT       | -20000501ADF |
| 42   | WXEL-TV | WEST PALM BEACH FL | 91.1     | LIC    | BLET        | -19820625KF  |
| 44   | WPPB-DT | BOCA RATON FL      | 34.8     | CP     | BPEDT       | -19991028ACM |
| 44   | WPPB-DT | BOCA RATON FL      | 34.8     | PLN    | DTVPLN      | -DTVP1193    |
| 45   | WHFT-TV | MIAMI FL           | 34.8     | LIC    | BLCT        | -19951208KF  |
| 45   | WTVK-DT | NAPLES FL          | 140.6    | PLN    | DTVPLN      | -DTVP1227    |
| 49   | WFGC    | PALM BEACH FL      | 93.0     | CP     | BPCDT       | -19991028ABC |
| 49   | WFGC-DT | PALM BEACH FL      | 112.1    | PLN    | DTVPLN      | -DTVP1347    |
| 55   | WPTV-DT | WEST PALM BEACH FL | 93.1     | PLN    | DTVPLN      | -DTVP1492    |
| 55   | WPTV    | WEST PALM BEACH FL | 93.1     | CP MOD | BMPCDT      | -20011025ABN |
| 43   | WINQ-CA | Palm Beach FL      | 141.3    | CPM    | CUR         | -PROPOSED    |

Proposed station is beyond the site to  
nearest cell evaluation distance

#####

#### Analysis of Interference to Affected Station 12

##### Analysis of current record

| Channel | Call    | City/State | Application | Ref. No.    |
|---------|---------|------------|-------------|-------------|
| 41      | WJAN-LP | MIAMI FL   | BLTTL       | -19971010JK |

##### Stations Potentially Affecting This Station

| Chan | Call    | City/State     | Dist(km) | Status | Application | Ref. No.     |
|------|---------|----------------|----------|--------|-------------|--------------|
| 33   | WBFS-TV | MIAMI FL       | 30.3     | LIC    | BLCT        | -19850125KE  |
| 34   | WTVX    | FORT PIERCE FL | 150.0    | LIC    | BLCT        | -19800624KF  |
| 38   | WTCE-DT | FORT PIERCE FL | 141.3    | CP     | BPEDT       | -20000103AAT |
| 39   | WBZL    | MIAMI FL       | 29.6     | LIC    | BLCT        | -19970401LW  |

|    |         |                    |       |        |        |              |
|----|---------|--------------------|-------|--------|--------|--------------|
| 40 | WPPB-TV | BOCA RATON FL      | 34.8  | APP    | BPRM   | -20000328AAE |
| 40 | WPPB-DT | BOCA RATON FL      | 34.8  | APP    | BMPEDT | -20020201AAY |
| 41 | WZVN-DT | NAPLES FL          | 177.3 | CP MOD | BMPCDT | -20020227ABM |
| 41 | WZVN-DT | NAPLES FL          | 140.5 | PLN    | DTVPLN | -DTVP1093    |
| 41 | WRBW-DT | ORLANDO FL         | 318.7 | PLN    | DTVPLN | -DTVP1094    |
| 41 | WRBW-DT | ORLANDO FL         | 321.5 | CP     | BPCDT  | -20000501ADF |
| 42 | WXEL-TV | WEST PALM BEACH FL | 91.1  | LIC    | BLET   | -19820625KF  |
| 44 | WPPB-DT | BOCA RATON FL      | 34.8  | CP     | BPEDT  | -19991028ACM |
| 44 | WPPB-DT | BOCA RATON FL      | 34.8  | PLN    | DTVPLN | -DTVP1193    |
| 45 | WHFT-TV | MIAMI FL           | 34.8  | LIC    | BLCT   | -19951208KF  |
| 45 | WTVK-DT | NAPLES FL          | 140.5 | PLN    | DTVPLN | -DTVP1227    |
| 49 | WFGC    | PALM BEACH FL      | 93.0  | CP     | BPCDT  | -19991028ABC |
| 49 | WFGC-DT | PALM BEACH FL      | 112.1 | PLN    | DTVPLN | -DTVP1347    |
| 55 | WPTV-DT | WEST PALM BEACH FL | 93.1  | PLN    | DTVPLN | -DTVP1492    |
| 55 | WPTV    | WEST PALM BEACH FL | 93.1  | CP MOD | BMPCDT | -20011025ABN |
| 43 | WINQ-CA | Palm Beach FL      | 141.3 | CPM    | CUR    | -PROPOSED    |

Proposed station is beyond the site to  
nearest cell evaluation distance

#####

#### Analysis of Interference to Affected Station 13

##### DTV Baseline Analysis

| Channel | Call    | City/State   | Application | Ref. No.  |
|---------|---------|--------------|-------------|-----------|
| 42      | WFCT-DT | BRADENTON FL | DTVPLN      | -DTVP1124 |

##### Stations Potentially Affecting This Station

| Chan | Call    | City/State         | Dist(km) | Status | Application | Ref. No.  |
|------|---------|--------------------|----------|--------|-------------|-----------|
| 41   | WZVN-DT | NAPLES FL          | 125.6    | PLN    | DTVPLN      | -DTVP1093 |
| 41   | WRBW-DT | ORLANDO FL         | 174.0    | PLN    | DTVPLN      | -DTVP1094 |
| 42   | WJXT-DT | JACKSONVILLE FL    | 325.5    | PLN    | DTVPLN      | -DTVP1125 |
| 42   | WXELTV  | WEST PALM BEACH FL | 219.3    | PLN    | DTVPLN      | -NPLN0372 |
| 43   | WBSF    | MELBOURNE FL       | 165.0    | PLN    | DTVPLN      | -NPLN0373 |

Results for: 42A FL BRADENTON      DTVPLN      DTVP1124      PLN  
HAAT 465.0 m, ATV ERP 50.0 kW

|                                | POPULATION | AREA (sq km) |
|--------------------------------|------------|--------------|
| within Noise Limited Contour   | 2380101    | 18294.4      |
| not affected by terrain losses | 2380101    | 18294.4      |
| lost to NTSC IX                | 0          | 0.0          |
| lost to additional IX by ATV   | 0          | 0.0          |
| lost to ATV IX only            | 0          | 0.0          |
| lost to all IX                 | 0          | 0.0          |

##### NTSC Baseline Analysis

| Channel | Call | City/State   | Application | Ref. No.  |
|---------|------|--------------|-------------|-----------|
| 66      | WFCT | BRADENTON FL | DTVPLN      | -NPLN0299 |

##### Stations Potentially Affecting This Station

| Chan | Call    | City/State        | Dist(km) | Status | Application | Ref. No.  |
|------|---------|-------------------|----------|--------|-------------|-----------|
| 59   | WTOG-DT | ST. PETERSBURG FL | 46.9     | PLN    | DTVPLN      | -DTVP1570 |

65 WRBW ORLANDO FL 174.0 PLN DTVPLN -NPLN0397

Results for: 66N FL BRADENTON DTVPLN NPLN0299 PLN  
 POPULATION AREA (sq km)  
 within Noise Limited Contour 2380101 18294.4  
 not affected by terrain losses 2380101 18294.4  
 lost to NTSC IX 822 12.0  
 lost to additional IX by ATV 0 0.0  
 lost to all IX 822 12.0

#### Analysis of current record

| Channel | Call    | City/State   | Application | Ref. No.  |
|---------|---------|--------------|-------------|-----------|
| 42      | WFCT-DT | BRADENTON FL | DTVPLN      | -DTVP1124 |

#### Stations Potentially Affecting This Station

| Chan | Call    | City/State         | Dist(km) | Status | Application | Ref. No.     |
|------|---------|--------------------|----------|--------|-------------|--------------|
| 41   | WZVN-DT | NAPLES FL          | 81.0     | CP MOD | BMPCDT      | -20020227ABM |
| 41   | WZVN-DT | NAPLES FL          | 125.6    | PLN    | DTVPLN      | -DTVP1093    |
| 41   | WRBW-DT | ORLANDO FL         | 174.0    | PLN    | DTVPLN      | -DTVP1094    |
| 41   | WRBW-DT | ORLANDO FL         | 177.4    | CP     | BPCDT       | -20000501ADF |
| 42   | WXPX    | BRADENTON FL       | 45.7     | APP    | BPCT        | -19980708KH  |
| 42   | WXPX    | BRADENTON FL       | 45.7     | APP    | BPCT        | -20020215AAZ |
| 42   | WJXT-DT | JACKSONVILLE FL    | 325.5    | PLN    | DTVPLN      | -DTVP1125    |
| 42   | WXEL-TV | WEST PALM BEACH FL | 219.3    | LIC    | BLET        | -19820625KF  |
| 43   | WBSF    | MELBOURNE FL       | 165.0    | LIC    | BLCT        | -19980422KG  |
| 43   | WINQ-CA | Palm Beach FL      | 209.1    | CPM    | CUR         | -PROPOSED    |

Proposed station is beyond the site to  
 nearest cell evaluation distance

#####

#### Analysis of Interference to Affected Station 14

#### Analysis of current record

| Channel | Call | City/State   | Application | Ref. No.    |
|---------|------|--------------|-------------|-------------|
| 42      | WXPX | BRADENTON FL | BPCDT       | -19990602KF |

#### Stations Potentially Affecting This Station

| Chan | Call    | City/State         | Dist(km) | Status | Application | Ref. No.     |
|------|---------|--------------------|----------|--------|-------------|--------------|
| 41   | WZVN-DT | NAPLES FL          | 121.2    | CP MOD | BMPCDT      | -20020227ABM |
| 41   | WZVN-DT | NAPLES FL          | 167.3    | PLN    | DTVPLN      | -DTVP1093    |
| 41   | WRBW-DT | ORLANDO FL         | 143.7    | PLN    | DTVPLN      | -DTVP1094    |
| 41   | WRBW-DT | ORLANDO FL         | 146.8    | CP     | BPCDT       | -20000501ADF |
| 42   | WXPX    | BRADENTON FL       | 0.0      | APP    | BPCT        | -19980708KH  |
| 42   | WXPX    | BRADENTON FL       | 0.0      | APP    | BPCT        | -20020215AAZ |
| 42   | WJXT-DT | JACKSONVILLE FL    | 281.2    | PLN    | DTVPLN      | -DTVP1125    |
| 42   | WJHG-DT | PANAMA CITY FL     | 422.0    | PLN    | DTVPLN      | -DTVP1126    |
| 42   | WXEL-TV | WEST PALM BEACH FL | 242.7    | LIC    | BLET        | -19820625KF  |
| 43   | WBSF    | MELBOURNE FL       | 142.9    | LIC    | BLCT        | -19980422KG  |
| 43   | WINQ-CA | Palm Beach FL      | 223.6    | CPM    | CUR         | -PROPOSED    |

Proposed station is beyond the site to

nearest cell evaluation distance

#####

Analysis of Interference to Affected Station 15

NTSC Baseline Analysis

| Channel | Call   | City/State         | Application | Ref. No.  |
|---------|--------|--------------------|-------------|-----------|
| 42      | WXELTV | WEST PALM BEACH FL | DTVPLN      | -NPLN0372 |

Stations Potentially Affecting This Station

| Chan | Call    | City/State     | Dist(km) | Status | Application | Ref. No.  |
|------|---------|----------------|----------|--------|-------------|-----------|
| 38   | WTCE-DT | FORT PIERCE FL | 96.1     | PLN    | DTVPLN      | -DTVP0985 |
| 41   | WZVN-DT | NAPLES FL      | 139.1    | PLN    | DTVPLN      | -DTVP1093 |
| 42   | WFCT-DT | BRADENTON FL   | 219.3    | PLN    | DTVPLN      | -DTVP1124 |
| 44   | WPPB-DT | BOCA RATON FL  | 65.3     | PLN    | DTVPLN      | -DTVP1193 |
| 45   | WTVK-DT | NAPLES FL      | 139.1    | PLN    | DTVPLN      | -DTVP1227 |
| 46   | WHFT-DT | MIAMI FL       | 65.3     | PLN    | DTVPLN      | -DTVP1257 |
| 49   | WFGC-DT | PALM BEACH FL  | 21.0     | PLN    | DTVPLN      | -DTVP1347 |
| 50   | WTVX-DT | FORT PIERCE FL | 62.3     | PLN    | DTVPLN      | -DTVP1373 |
| 34   | WTVX    | FORT PIERCE FL | 62.3     | PLN    | DTVPLN      | -NPLN0263 |
| 35   | WCTD    | MIAMI FL       | 99.4     | PLN    | DTVPLN      | -NPLN0364 |
| 39   | WDZL    | MIAMI FL       | 67.6     | PLN    | DTVPLN      | -NPLN0369 |
| 43   | WBSF    | MELBOURNE FL   | 203.4    | PLN    | DTVPLN      | -NPLN0373 |
| 45   | WHFT    | MIAMI FL       | 65.3     | PLN    | DTVPLN      | -NPLN0377 |
| 46   | WTVK    | NAPLES FL      | 139.1    | PLN    | DTVPLN      | -NPLN0378 |
| 49   | WRXYTV  | TICE FL        | 155.9    | PLN    | DTVPLN      | -NPLN0382 |
| 56   | WIRB    | MELBOURNE FL   | 189.8    | PLN    | DTVPLN      | -NPLN0390 |

| Results for: 42N FL WEST PALM BEACH | DTVPLN     | NPLN0372     | PLN |
|-------------------------------------|------------|--------------|-----|
|                                     | POPULATION | AREA (sq km) |     |
| within Noise Limited Contour        | 2451799    | 19160.7      |     |
| not affected by terrain losses      | 2451799    | 19160.7      |     |
| lost to NTSC IX                     | 0          | 4.0          |     |
| lost to additional IX by ATV        | 0          | 0.0          |     |
| lost to all IX                      | 0          | 4.0          |     |

Analysis of current record

| Channel | Call    | City/State         | Application | Ref. No.    |
|---------|---------|--------------------|-------------|-------------|
| 42      | WXEL-TV | WEST PALM BEACH FL | BLET        | -19820625KF |

Stations Potentially Affecting This Station

| Chan | Call    | City/State     | Dist(km) | Status | Application | Ref. No.     |
|------|---------|----------------|----------|--------|-------------|--------------|
| 34   | WTVX    | FORT PIERCE FL | 62.3     | LIC    | BLCT        | -19800624KF  |
| 35   | WPXM    | MIAMI FL       | 99.4     | LIC    | BLCT        | -19921026KE  |
| 38   | WTCE-DT | FORT PIERCE FL | 50.3     | CP     | BPEDT       | -20000103AAT |
| 38   | WTCE-DT | FORT PIERCE FL | 96.1     | PLN    | DTVPLN      | -DTVP0985    |
| 39   | WBZL    | MIAMI FL       | 67.6     | LIC    | BLCT        | -19970401LW  |
| 40   | WPPB-TV | BOCA RATON FL  | 65.3     | APP    | BPRM        | -20000328AAE |
| 40   | WPPB-DT | BOCA RATON FL  | 65.3     | APP    | BMPEDT      | -20020201AAY |
| 41   | WZVN-DT | NAPLES FL      | 153.5    | CP MOD | BMPCDT      | -20020227ABM |
| 41   | WZVN-DT | NAPLES FL      | 139.1    | PLN    | DTVPLN      | -DTVP1093    |
| 42   | WXPX    | BRADENTON FL   | 242.7    | APP    | BPCT        | -19980708KH  |

|    |         |                  |       |     |        |              |
|----|---------|------------------|-------|-----|--------|--------------|
| 42 | WFCT-DT | BRADENTON FL     | 219.3 | PLN | DTVPLN | -DTVP1124    |
| 42 | WXPX    | BRADENTON FL     | 242.7 | CP  | BPCDT  | -19990602KF  |
| 42 | WXPX    | BRADENTON FL     | 242.7 | APP | BPCT   | -20020215AAZ |
| 43 | WBSF    | MELBOURNE FL     | 203.3 | LIC | BLCT   | -19980422KG  |
| 44 | WPPB-DT | BOCA RATON FL    | 65.3  | CP  | BPEDT  | -19991028ACM |
| 44 | WPPB-DT | BOCA RATON FL    | 65.3  | PLN | DTVPLN | -DTVP1193    |
| 45 | WHFT-TV | MIAMI FL         | 65.3  | LIC | BLCT   | -19951208KF  |
| 45 | WTVK-DT | NAPLES FL        | 139.1 | PLN | DTVPLN | -DTVP1227    |
| 46 | WHFT-DT | MIAMI FL         | 65.3  | CP  | BPCDT  | -19990706KG  |
| 46 | WHFT-DT | MIAMI FL         | 65.3  | PLN | DTVPLN | -DTVP1257    |
| 49 | WFGC    | PALM BEACH FL    | 3.6   | CP  | BPCDT  | -19991028ABC |
| 49 | WFGC-DT | PALM BEACH FL    | 21.0  | PLN | DTVPLN | -DTVP1347    |
| 49 | WRXY-TV | TICE FL          | 155.9 | LIC | BLCT   | -19950208KE  |
| 49 | WRXY-TV | TICE FL          | 155.9 | APP | BPCT   | -20020520AAU |
| 50 | WTVX    | FORT PIERCE FL   | 62.3  | CP  | BPCDT  | -19991027ABY |
| 50 | WTVX-DT | FORT PIERCE FL   | 62.3  | PLN | DTVPLN | -DTVP1373    |
| 56 | WOPX    | MELBOURNE FL     | 189.8 | LIC | BLCT   | -19980327KF  |
| 57 | NEW     | BOYNTON BEACH FL | 0.0   | APP | BPRM   | -20000914AAV |
| 43 | WINQ-CA | Palm Beach FL    | 50.3  | CPM | CUR    | -PROPOSED    |

Proposal causes no interference

#####

# Analysis of Interference to Affected Station 16

## Analysis of current record

| Channel | Call    | City/State     | Application | Ref. No.  |
|---------|---------|----------------|-------------|-----------|
| 43      | WJXE-LP | GAINESVILLE FL | BPTTL       | -JG0601QD |

## Stations Potentially Affecting This Station

| Chan | Call     | City/State       | Dist(km) | Status | Application | Ref. No.     |
|------|----------|------------------|----------|--------|-------------|--------------|
| 36   | WUFT-DT  | GAINESVILLE FL   | 3.4      | PLN    | DTVPLN      | -DTVP0951    |
| 39   | 960919LB | CRYSTAL RIVER FL | 117.5    | APP    | BPEDT       | -19960919LB  |
| 40   | WACX-DT  | LEESBURG FL      | 137.7    | PLN    | DTVPLN      | -DTVP1059    |
| 41   | 960724KW | LAKE CITY FL     | 63.7     | APP    | BPET        | -19960724KW  |
| 42   | WJXT-DT  | JACKSONVILLE FL  | 99.7     | PLN    | DTVPLN      | -DTVP1125    |
| 43   | WGIQ     | LOUISVILLE AL    | 364.9    | LIC    | BLET        | -19921016KG  |
| 43   | WBSF     | MELBOURNE FL     | 214.2    | LIC    | BLCT        | -19980422KG  |
| 43   | WVAG-DT  | VALDOSTA GA      | 184.8    | CP     | BPCDT       | -20010731ABH |
| 43   | WGVP-DT  | VALDOSTA GA      | 184.8    | PLN    | DTVPLN      | -DTVP1160    |
| 44   | WJEB-TV  | JACKSONVILLE FL  | 99.0     | APP    | BPET        | -20020523AAR |
| 44   | WJEB-DT  | JACKSONVILLE FL  | 99.0     | PLN    | DTVPLN      | -DTVP1194    |
| 44   | WJEB-DT  | JACKSONVILLE FL  | 98.9     | CP     | BPEDT       | -20000428ACG |
| 44   | WGVP     | VALDOSTA GA      | 184.8    | LIC    | BLCT        | -19951107KI  |
| 45   | WLCB-TV  | LEESBURG FL      | 129.9    | CP MOD | BMPET       | -20000717AAM |
| 46   | WLCB-DT  | LEESBURG FL      | 114.4    | PLN    | DTVPLN      | -DTVP1256    |
| 47   | WTEV-TV  | JACKSONVILLE FL  | 98.9     | LIC    | BLCT        | -19881116KG  |
| 51   | WOGX     | OCALA FL         | 42.6     | LIC    | BLCT        | -19831107KI  |
| 57   | WFXU     | LIVE OAK FL      | 108.4    | LIC    | BLCT        | -19980715KE  |
| 43   | WINQ-CA  | Palm Beach FL    | 370.9    | CPM    | CUR         | -PROPOSED    |

Proposal causes no interference

#####

# Analysis of Interference to Affected Station 17

## Analysis of current record

| Channel | Call    | City/State      | Application Ref. No. |
|---------|---------|-----------------|----------------------|
| 43      | WBXJ-CA | JACKSONVILLE FL | BMJPTTA -20010628ACF |

## Stations Potentially Affecting This Station

| Chan | Call     | City/State      | Dist(km) | Status | Application Ref. No. |
|------|----------|-----------------|----------|--------|----------------------|
| 36   | WUFT-DT  | GAINESVILLE FL  | 101.7    | PLN    | DTVPLN -DTVP0951     |
| 41   | 960724KW | LAKE CITY FL    | 59.4     | APP    | BPET -19960724KW     |
| 42   | WJXT-DT  | JACKSONVILLE FL | 1.1      | PLN    | DTVPLN -DTVP1125     |
| 43   | WGIQ     | LOUISVILLE AL   | 402.0    | LIC    | BLET -19921016KG     |
| 43   | WBSF     | MELBOURNE FL    | 227.9    | LIC    | BLCT -19980422KG     |
| 43   | WVAG-DT  | VALDOSTA GA     | 198.8    | CP     | BPCDT -20010731ABH   |
| 43   | WGVP-DT  | VALDOSTA GA     | 198.8    | PLN    | DTVPLN -DTVP1160     |
| 44   | WJEB-TV  | JACKSONVILLE FL | 0.0      | APP    | BPET -20020523AAR    |
| 44   | WJEB-DT  | JACKSONVILLE FL | 0.0      | PLN    | DTVPLN -DTVP1194     |
| 44   | WJEB-DT  | JACKSONVILLE FL | 0.7      | CP     | BPEDT -20000428ACG   |
| 44   | WGVP     | VALDOSTA GA     | 198.8    | LIC    | BLCT -19951107KI     |
| 47   | WTEV-TV  | JACKSONVILLE FL | 0.1      | LIC    | BLCT -19881116KG     |
| 51   | WOGX     | OCALA FL        | 125.9    | LIC    | BLCT -19831107KI     |
| 57   | WFXU     | LIVE OAK FL     | 142.1    | LIC    | BLCT -19980715KE     |
| 43   | WINQ-CA  | Palm Beach FL   | 385.8    | CPM    | CUR -PROPOSED        |

Proposed station is beyond the site to  
nearest cell evaluation distance

#####

# Analysis of Interference to Affected Station 18

## NTSC Baseline Analysis

| Channel | Call | City/State   | Application Ref. No. |
|---------|------|--------------|----------------------|
| 43      | WBSF | MELBOURNE FL | DTVPLN -NPLN0373     |

## Stations Potentially Affecting This Station

| Chan | Call    | City/State         | Dist(km) | Status | Application Ref. No. |
|------|---------|--------------------|----------|--------|----------------------|
| 39   | WFTV-DT | ORLANDO FL         | 37.2     | PLN    | DTVPLN -DTVP1026     |
| 40   | WACX-DT | LEESBURG FL        | 78.9     | PLN    | DTVPLN -DTVP1059     |
| 41   | WRBW-DT | ORLANDO FL         | 34.3     | PLN    | DTVPLN -DTVP1094     |
| 42   | WFCT-DT | BRADENTON FL       | 165.0    | PLN    | DTVPLN -DTVP1124     |
| 43   | WGVP-DT | VALDOSTA GA        | 396.7    | PLN    | DTVPLN -DTVP1160     |
| 46   | WLCB-DT | LEESBURG FL        | 104.1    | PLN    | DTVPLN -DTVP1256     |
| 50   | WTVX-DT | FORT PIERCE FL     | 141.5    | PLN    | DTVPLN -DTVP1373     |
| 51   | WTGL-DT | COCOA FL           | 0.0      | PLN    | DTVPLN -DTVP1403     |
| 58   | WCPX-DT | ORLANDO FL         | 37.2     | PLN    | DTVPLN -DTVP1547     |
| 36   | WFTX    | CAPE CORAL FL      | 189.5    | PLN    | DTVPLN -NPLN0266     |
| 35   | WOFL    | ORLANDO FL         | 37.2     | PLN    | DTVPLN -NPLN0365     |
| 42   | WXELTV  | WEST PALM BEACH FL | 203.4    | PLN    | DTVPLN -NPLN0372     |
| 44   | WTOG    | ST. PETERSBURG FL  | 142.9    | PLN    | DTVPLN -NPLN0375     |
| 45   | WLCBTv  | LEESBURG FL        | 104.1    | PLN    | DTVPLN -NPLN0376     |



50 WBHSTV TAMPA FL 142.1 PLN DTVPLN -NPLN0384

Results for: 43N FL MELBOURNE DTVPLN NPLN0373 PLN  
 POPULATION AREA (sq km)  
 within Noise Limited Contour 1540537 14940.2  
 not affected by terrain losses 1540537 14940.2  
 lost to NTSC IX 1363 64.6  
 lost to additional IX by ATV 0 0.0  
 lost to all IX 1363 64.6

Analysis of current record

| Channel | Call | City/State   | Application | Ref. No.    |
|---------|------|--------------|-------------|-------------|
| 43      | WBSF | MELBOURNE FL | BLCT        | -19980422KG |

# Stations Potentially Affecting This Station

| Chan | Call    | City/State         | Dist(km) | Status | Application | Ref. No.     |
|------|---------|--------------------|----------|--------|-------------|--------------|
| 35   | WOFL    | ORLANDO FL         | 37.3     | CP     | BPCT        | -19960626KE  |
| 36   | WFTX    | CAPE CORAL FL      | 189.4    | CP     | BPCT        | -20000912AAI |
| 39   | WFTV    | ORLANDO FL         | 32.3     | LIC    | BLCDDT      | -20010430ABF |
| 39   | WFTV-DT | ORLANDO FL         | 37.4     | PLN    | DTVPLN      | -DTVP1026    |
| 39   | WFTV    | ORLANDO FL         | 32.3     | CP MOD | BMPCDDT     | -19991018ABA |
| 40   | WACX    | LEESBURG FL        | 35.3     | CP     | BPCDDT      | -19991004ABN |
| 40   | WACX-DT | LEESBURG FL        | 79.0     | PLN    | DTVPLN      | -DTVP1059    |
| 41   | WRBW-DT | ORLANDO FL         | 34.4     | PLN    | DTVPLN      | -DTVP1094    |
| 41   | WRBW-DT | ORLANDO FL         | 36.7     | CP     | BPCDDT      | -20000501ADF |
| 42   | WXPX    | BRADENTON FL       | 142.9    | APP    | BPCT        | -19980708KH  |
| 42   | WFCT-DT | BRADENTON FL       | 165.0    | PLN    | DTVPLN      | -DTVP1124    |
| 42   | WXPX    | BRADENTON FL       | 142.9    | CP     | BPCDDT      | -19990602KF  |
| 42   | WXPX    | BRADENTON FL       | 142.9    | APP    | BPCT        | -20020215AAZ |
| 42   | WXEL-TV | WEST PALM BEACH FL | 203.3    | LIC    | BLET        | -19820625KF  |
| 43   | WVAG-DT | VALDOSTA GA        | 396.8    | CP     | BPCDDT      | -20010731ABH |
| 43   | WGVP-DT | VALDOSTA GA        | 396.8    | PLN    | DTVPLN      | -DTVP1160    |
| 44   | WTOG    | ST. PETERSBURG FL  | 143.0    | LIC    | BLCT        | -19990415KI  |
| 45   | WLCB-TV | LEESBURG FL        | 98.0     | CP MOD | BMPET       | -20000717AAM |
| 46   | WLCB-DT | LEESBURG FL        | 35.3     | CP     | BPEDT       | -20000428ACP |
| 46   | WLCB-DT | LEESBURG FL        | 104.2    | PLN    | DTVPLN      | -DTVP1256    |
| 50   | WTVX    | FORT PIERCE FL     | 141.3    | CP     | BPCDDT      | -19991027ABY |
| 50   | WTVX-DT | FORT PIERCE FL     | 141.3    | PLN    | DTVPLN      | -DTVP1373    |
| 50   | WBHS-TV | TAMPA FL           | 142.1    | CP     | BPCT        | -19960710KG  |
| 51   | WTGL-DT | COCOA FL           | 0.1      | PLN    | DTVPLN      | -DTVP1403    |
| 58   | WKMG-DT | ORLANDO FL         | 36.7     | LIC    | BLCDDT      | -20010515ABB |
| 58   | WCPX-DT | ORLANDO FL         | 37.4     | PLN    | DTVPLN      | -DTVP1547    |
| 43   | WINQ-CA | Palm Beach FL      | 159.6    | CPM    | CUR         | -PROPOSED    |

Total scenarios = 1

Result key: 1  
 Scenario 1 Affected station 18  
 Before Analysis

Results for: 43N FL MELBOURNE BLCT 19980422KG LIC  
 POPULATION AREA (sq km)  
 within Noise Limited Contour 1535026 16147.6  
 not affected by terrain losses 1535026 16147.6  
 lost to NTSC IX 4739 40.4

|                              |      |      |
|------------------------------|------|------|
| lost to additional IX by ATV | 2112 | 12.1 |
| lost to all IX               | 6851 | 52.5 |

Potential Interfering Stations Included in above Scenario 1

|                 |       |             |    |
|-----------------|-------|-------------|----|
| 35N FL ORLANDO  | BPCT  | 19960626KE  | CP |
| 45N FL LEESBURG | BMPET | 20000717AAM | CP |
| 41A FL ORLANDO  | BPCDT | 20000501ADF | CP |

#### After Analysis

|                                |            |              |     |
|--------------------------------|------------|--------------|-----|
| Results for: 43N FL MELBOURNE  | BLCT       | 19980422KG   | LIC |
|                                | POPULATION | AREA (sq km) |     |
| within Noise Limited Contour   | 1535026    | 16147.6      |     |
| not affected by terrain losses | 1535026    | 16147.6      |     |
| lost to NTSC IX                | 9670       | 105.0        |     |
| lost to additional IX by ATV   | 2112       | 12.1         |     |
| lost to all IX                 | 11782      | 117.1        |     |

Potential Interfering Stations Included in above Scenario 1

|  |       |             |                        |
|--|-------|-------------|------------------------|
| 35N FL ORLANDO   | BPCT  | 19960626KE  | CP                     |
| 45N FL LEESBURG  | BMPET | 20000717AAM | CP                     |
| 41A FL ORLANDO   | BPCDT | 20000501ADF | CP                     |
| 43N FL Palm Beach                                      | CUR   | PROPOSED    | CPM                    |
| <b>*Percent new DTV interference without proposal:</b> |       | <b>0.4</b>  | <b>BLCT 19980422KG</b> |
| <b>*Percent new DTV interference with proposal:</b>    |       | <b>0.8</b>  | <b>BLCT 19980422KG</b> |

#####

#### Analysis of Interference to Affected Station 19

#### Analysis of current record

| Channel | Call    | City/State | Application Ref. No. |
|---------|---------|------------|----------------------|
| 43      | WWDT-LP | NAPLES FL  | BLTTL -20001208ABI   |

#### Stations Potentially Affecting This Station

| Chan | Call    | City/State         | Dist(km) | Status | Application Ref. No. |
|------|---------|--------------------|----------|--------|----------------------|
| 35   | WFTX    | CAPE CORAL FL      | 65.9     | CP     | BPCDT -19991028ADX   |
| 35   | WFTX-DT | CAPE CORAL FL      | 66.0     | PLN    | DTVPLN -DTVP0915     |
| 36   | WFTX    | CAPE CORAL FL      | 65.9     | CP     | BPCT -20000912AAI    |
| 41   | WZVN-DT | NAPLES FL          | 69.2     | CP MOD | BMPCDT -20020227ABM  |
| 41   | WZVN-DT | NAPLES FL          | 30.6     | PLN    | DTVPLN -DTVP1093     |
| 42   | WXPX    | BRADENTON FL       | 185.2    | APP    | BPCT -19980708KH     |
| 42   | WFCT-DT | BRADENTON FL       | 140.9    | PLN    | DTVPLN -DTVP1124     |
| 42   | WXPX    | BRADENTON FL       | 185.2    | CP     | BPCDT -19990602KF    |
| 42   | WXPX    | BRADENTON FL       | 185.2    | APP    | BPCT -20020215AAZ    |
| 42   | WXEL-TV | WEST PALM BEACH FL | 161.9    | LIC    | BLET -19820625KF     |
| 43   | WBSF    | MELBOURNE FL       | 250.3    | LIC    | BLCT -19980422KG     |
| 44   | WPPB-DT | BOCA RATON FL      | 165.3    | CP     | BPEDT -19991028ACM   |
| 44   | WPPB-DT | BOCA RATON FL      | 165.3    | PLN    | DTVPLN -DTVP1193     |
| 44   | WTOG    | ST. PETERSBURG FL  | 186.4    | LIC    | BLCT -19990415KI     |
| 45   | WTVK    | NAPLES FL          | 64.9     | CP     | BPCDT -19991029AFN   |

|    |         |               |       |     |        |              |
|----|---------|---------------|-------|-----|--------|--------------|
| 45 | WTVK-DT | NAPLES FL     | 30.6  | PLN | DTVPLN | -DTVP1227    |
| 46 | WTVK    | NAPLES FL     | 64.9  | CP  | BPCT   | -19991123AGQ |
| 50 | WBHS-TV | TAMPA FL      | 187.7 | CP  | BPCT   | -19960710KG  |
| 43 | WINQ-CA | Palm Beach FL | 186.5 | CPM | CUR    | -PROPOSED    |

Proposal causes no interference

#####

# Analysis of Interference to Affected Station 20

## DTV Baseline Analysis

| Channel | Call    | City/State    | Application | Ref. No.  |
|---------|---------|---------------|-------------|-----------|
| 44      | WPPB-DT | BOCA RATON FL | DTVPLN      | -DTVP1193 |

## Stations Potentially Affecting This Station

| Chan | Call    | City/State        | Dist(km) | Status | Application | Ref. No.  |
|------|---------|-------------------|----------|--------|-------------|-----------|
| 45   | WTVK-DT | NAPLES FL         | 152.9    | PLN    | DTVPLN      | -DTVP1227 |
| 44   | WTOG    | ST. PETERSBURG FL | 291.0    | PLN    | DTVPLN      | -NPLN0375 |
| 45   | WHFT    | MIAMI FL          | 0.0      | PLN    | DTVPLN      | -NPLN0377 |

Results for: 44A FL BOCA RATON DTVPLN DTVP1193 PLN  
 HAAT 310.0 m, ATV ERP 61.7 kW

|                                | POPULATION | AREA (sq km) |
|--------------------------------|------------|--------------|
| within Noise Limited Contour   | 3704698    | 13896.1      |
| not affected by terrain losses | 3704698    | 13896.1      |
| lost to NTSC IX                | 0          | 0.0          |
| lost to additional IX by ATV   | 0          | 0.0          |
| lost to ATV IX only            | 0          | 0.0          |
| lost to all IX                 | 0          | 0.0          |

## NTSC Baseline Analysis

| Channel | Call   | City/State    | Application | Ref. No.  |
|---------|--------|---------------|-------------|-----------|
| 63      | WPPBTV | BOCA RATON FL | DTVPLN      | -NPLN0292 |

## Stations Potentially Affecting This Station

| Chan | Call    | City/State         | Dist(km) | Status | Application | Ref. No.  |
|------|---------|--------------------|----------|--------|-------------|-----------|
| 55   | WPTV-DT | WEST PALM BEACH FL | 66.4     | PLN    | DTVPLN      | -DTVP1492 |
| 61   | WFGC    | PALM BEACH FL      | 85.7     | PLN    | DTVPLN      | -NPLN0395 |
| 67   | WHBI    | LAKE WORTH FL      | 82.1     | PLN    | DTVPLN      | -NPLN0398 |

Results for: 63N FL BOCA RATON DTVPLN NPLN0292 PLN

|                                | POPULATION | AREA (sq km) |
|--------------------------------|------------|--------------|
| within Noise Limited Contour   | 3704698    | 13892.1      |
| not affected by terrain losses | 3704698    | 13892.1      |
| lost to NTSC IX                | 0          | 0.0          |
| lost to additional IX by ATV   | 119        | 4.0          |
| lost to all IX                 | 119        | 4.0          |

## Analysis of current record

| Channel | Call    | City/State    | Application | Ref. No.     |
|---------|---------|---------------|-------------|--------------|
| 44      | WPPB-DT | BOCA RATON FL | BPEDT       | -19991028ACM |

## Stations Potentially Affecting This Station

| Chan | Call    | City/State        | Dist(km) | Status | Application | Ref. No.     |
|------|---------|-------------------|----------|--------|-------------|--------------|
| 44   | WTOG    | ST. PETERSBURG FL | 291.0    | LIC    | BLCT        | -19990415KI  |
| 45   | WHFT-TV | MIAMI FL          | 0.0      | LIC    | BLCT        | -19951208KF  |
| 45   | WTVK    | NAPLES FL         | 183.8    | CP     | BPCDT       | -19991029AFN |
| 45   | WTVK-DT | NAPLES FL         | 152.9    | PLN    | DTVPLN      | -DTVP1227    |
| 43   | WINQ-CA | Palm Beach FL     | 114.8    | CPM    | CUR         | -PROPOSED    |

Proposal causes no interference

#####

# Analysis of Interference to Affected Station 21

## Analysis of current record

| Channel | Call    | City/State    | Application | Ref. No.  |
|---------|---------|---------------|-------------|-----------|
| 44      | WPPB-DT | BOCA RATON FL | DTVPLN      | -DTVP1193 |

## Stations Potentially Affecting This Station

| Chan | Call    | City/State        | Dist(km) | Status | Application | Ref. No.     |
|------|---------|-------------------|----------|--------|-------------|--------------|
| 44   | WTOG    | ST. PETERSBURG FL | 291.0    | LIC    | BLCT        | -19990415KI  |
| 45   | WHFT-TV | MIAMI FL          | 0.0      | LIC    | BLCT        | -19951208KF  |
| 45   | WTVK    | NAPLES FL         | 183.8    | CP     | BPCDT       | -19991029AFN |
| 45   | WTVK-DT | NAPLES FL         | 152.9    | PLN    | DTVPLN      | -DTVP1227    |
| 43   | WINQ-CA | Palm Beach FL     | 114.8    | CPM    | CUR         | -PROPOSED    |

Proposal causes no interference

#####

# Analysis of Interference to Affected Station 22

## Analysis of current record

| Channel | Call    | City/State | Application | Ref. No.     |
|---------|---------|------------|-------------|--------------|
| 44      | WHDT-LP | MIAMI FL   | BPTTL       | -20011221ABA |

## Stations Potentially Affecting This Station

| Chan | Call    | City/State         | Dist(km) | Status | Application | Ref. No.     |
|------|---------|--------------------|----------|--------|-------------|--------------|
| 36   | WPXP-DT | LAKE WORTH FL      | 68.7     | APP    | BMPCDT      | -20020501AAH |
| 36   | WHBI-DT | LAKE WORTH FL      | 84.9     | PLN    | DTVPLN      | -DTVP0952    |
| 36   | WPXP    | LAKE WORTH FL      | 68.7     | CP     | BPCDT       | -19991027ADA |
| 40   | WPPB-TV | BOCA RATON FL      | 4.2      | APP    | BPRM        | -20000328AAE |
| 40   | WPPB-DT | BOCA RATON FL      | 4.2      | APP    | BMPEDT      | -20020201AAY |
| 42   | WXEL-TV | WEST PALM BEACH FL | 67.5     | LIC    | BLET        | -19820625KF  |
| 44   | WPPB-DT | BOCA RATON FL      | 4.2      | CP     | BPEDT       | -19991028ACM |
| 44   | WPPB-DT | BOCA RATON FL      | 4.2      | PLN    | DTVPLN      | -DTVP1193    |
| 44   | WTOG    | ST. PETERSBURG FL  | 290.3    | LIC    | BLCT        | -19990415KI  |
| 45   | WHFT-TV | MIAMI FL           | 4.2      | LIC    | BLCT        | -19951208KF  |
| 45   | WTVK    | NAPLES FL          | 182.0    | CP     | BPCDT       | -19991029AFN |
| 45   | WTVK-DT | NAPLES FL          | 150.4    | PLN    | DTVPLN      | -DTVP1227    |
| 46   | WHFT-DT | MIAMI FL           | 4.2      | CP     | BPCDT       | -19990706KG  |
| 46   | WHFT-DT | MIAMI FL           | 4.2      | PLN    | DTVPLN      | -DTVP1257    |
| 47   | WAMI-DT | HOLLYWOOD FL       | 2.3      | APP    | BMPCDT      | -20011022AAN |

|    |         |                    |       |        |        |              |
|----|---------|--------------------|-------|--------|--------|--------------|
| 47 | WYHS-DT | HOLLYWOOD FL       | 0.5   | PLN    | DTVPLN | -DTVP1288    |
| 47 | WAMI-DT | HOLLYWOOD FL       | 0.4   | CP     | BPCDT  | -19981030KF  |
| 51 | WSCV    | FORT LAUDERDALE FL | 2.3   | CP MOD | BMPCT  | -20010301ABZ |
| 52 | WSCV-DT | FORT LAUDERDALE FL | 2.3   | CP MOD | BMPCDT | -20010301ABC |
| 52 | WSCV-DT | FORT LAUDERDALE FL | 0.5   | PLN    | DTVPLN | -DTVP1432    |
| 59 | WHDT-DT | STUART FL          | 85.0  | CP     | BPCDT  | -19960920LH  |
| 43 | WINQ-CA | Palm Beach FL      | 117.3 | CPM    | CUR    | -PROPOSED    |

Proposal causes no interference

#####

# Analysis of Interference to Affected Station 23

## Analysis of current record

| Channel | Call    | City/State | Application | Ref. No.     |
|---------|---------|------------|-------------|--------------|
| 44      | WHDT-LP | MIAMI FL   | BLTTL       | -20011221AAZ |

## Stations Potentially Affecting This Station

| Chan | Call    | City/State         | Dist(km) | Status | Application | Ref. No.     |
|------|---------|--------------------|----------|--------|-------------|--------------|
| 36   | WPXP-DT | LAKE WORTH FL      | 68.7     | APP    | BMPCDT      | -20020501AAH |
| 36   | WHBI-DT | LAKE WORTH FL      | 84.9     | PLN    | DTVPLN      | -DTVP0952    |
| 36   | WPXP    | LAKE WORTH FL      | 68.7     | CP     | BPCDT       | -19991027ADA |
| 40   | WPPB-TV | BOCA RATON FL      | 4.2      | APP    | BPRM        | -20000328AAE |
| 40   | WPPB-DT | BOCA RATON FL      | 4.2      | APP    | BMPEDT      | -20020201AAY |
| 42   | WXEL-TV | WEST PALM BEACH FL | 67.5     | LIC    | BLET        | -19820625KF  |
| 44   | WPPB-DT | BOCA RATON FL      | 4.2      | CP     | BPEDT       | -19991028ACM |
| 44   | WPPB-DT | BOCA RATON FL      | 4.2      | PLN    | DTVPLN      | -DTVP1193    |
| 44   | WTOG    | ST. PETERSBURG FL  | 290.3    | LIC    | BLCT        | -19990415KI  |
| 45   | WHFT-TV | MIAMI FL           | 4.2      | LIC    | BLCT        | -19951208KF  |
| 45   | WTVK    | NAPLES FL          | 182.0    | CP     | BPCDT       | -19991029AFN |
| 45   | WTVK-DT | NAPLES FL          | 150.4    | PLN    | DTVPLN      | -DTVP1227    |
| 46   | WHFT-DT | MIAMI FL           | 4.2      | CP     | BPCDT       | -19990706KG  |
| 46   | WHFT-DT | MIAMI FL           | 4.2      | PLN    | DTVPLN      | -DTVP1257    |
| 47   | WAMI-DT | HOLLYWOOD FL       | 2.3      | APP    | BMPCDT      | -20011022AAN |
| 47   | WYHS-DT | HOLLYWOOD FL       | 0.5      | PLN    | DTVPLN      | -DTVP1288    |
| 47   | WAMI-DT | HOLLYWOOD FL       | 0.4      | CP     | BPCDT       | -19981030KF  |
| 51   | WSCV    | FORT LAUDERDALE FL | 2.3      | CP MOD | BMPCT       | -20010301ABZ |
| 52   | WSCV-DT | FORT LAUDERDALE FL | 2.3      | CP MOD | BMPCDT      | -20010301ABC |
| 52   | WSCV-DT | FORT LAUDERDALE FL | 0.5      | PLN    | DTVPLN      | -DTVP1432    |
| 59   | WHDT-DT | STUART FL          | 85.0     | CP     | BPCDT       | -19960920LH  |
| 43   | WINQ-CA | Palm Beach FL      | 117.3    | CPM    | CUR         | -PROPOSED    |

Proposed station is beyond the site to nearest cell evaluation distance

#####

# Analysis of Interference to Affected Station 24

## NTSC Baseline Analysis

| Channel | Call | City/State | Application | Ref. No.  |
|---------|------|------------|-------------|-----------|
| 45      | WHFT | MIAMI FL   | DTVPLN      | -NPLN0377 |

# Stations Potentially Affecting This Station

| Chan | Call    | City/State         | Dist(km) | Status | Application | Ref. No.  |
|------|---------|--------------------|----------|--------|-------------|-----------|
| 44   | WPPB-DT | BOCA RATON FL      | 0.0      | PLN    | DTVPLN      | -DTVP1193 |
| 45   | WTVK-DT | NAPLES FL          | 152.9    | PLN    | DTVPLN      | -DTVP1227 |
| 46   | WHFT-DT | MIAMI FL           | 0.0      | PLN    | DTVPLN      | -DTVP1257 |
| 47   | WYHS-DT | HOLLYWOOD FL       | 4.6      | PLN    | DTVPLN      | -DTVP1288 |
| 49   | WFGC-DT | PALM BEACH FL      | 85.7     | PLN    | DTVPLN      | -DTVP1347 |
| 52   | WSCV-DT | FORT LAUDERDALE FL | 4.6      | PLN    | DTVPLN      | -DTVP1432 |
| 42   | WXELTV  | WEST PALM BEACH FL | 65.3     | PLN    | DTVPLN      | -NPLN0372 |
| 45   | WLCBT   | LEESBURG FL        | 355.6    | PLN    | DTVPLN      | -NPLN0376 |
| 46   | WTVK    | NAPLES FL          | 152.9    | PLN    | DTVPLN      | -NPLN0378 |

|                           |                                |  |            |              |     |
|---------------------------|--------------------------------|--|------------|--------------|-----|
| Results for: 45N FL MIAMI |                                |  | DTVPLN     | NPLN0377     | PLN |
|                           |                                |  | POPULATION | AREA (sq km) |     |
|                           | within Noise Limited Contour   |  | 3710164    | 12757.2      |     |
|                           | not affected by terrain losses |  | 3710164    | 12757.2      |     |
|                           | lost to NTSC IX                |  | 0          | 0.0          |     |
|                           | lost to additional IX by ATV   |  | 0          | 0.0          |     |
|                           | lost to all IX                 |  | 0          | 0.0          |     |

## Analysis of current record

| Channel | Call    | City/State | Application | Ref. No.    |
|---------|---------|------------|-------------|-------------|
| 45      | WHFT-TV | MIAMI FL   | BLCT        | -19951208KF |

# Stations Potentially Affecting This Station

| Chan | Call     | City/State         | Dist(km) | Status | Application | Ref. No.     |
|------|----------|--------------------|----------|--------|-------------|--------------|
| 38   | WTCE-DT  | FORT PIERCE FL     | 114.8    | CP     | BPEDT       | -20000103AAT |
| 42   | WXEL-TV  | WEST PALM BEACH FL | 65.3     | LIC    | BLET        | -19820625KF  |
| 44   | WPPB-DT  | BOCA RATON FL      | 0.0      | CP     | BPEDT       | -19991028ACM |
| 44   | WPPB-DT  | BOCA RATON FL      | 0.0      | PLN    | DTVPLN      | -DTVP1193    |
| 45   | WLCB-TV  | LEESBURG FL        | 340.1    | CP MOD | BMPET       | -20000717AAM |
| 45   | WTVK     | NAPLES FL          | 183.8    | CP     | BPCDT       | -19991029AFN |
| 45   | WTVK-DT  | NAPLES FL          | 152.9    | PLN    | DTVPLN      | -DTVP1227    |
| 46   | WHFT-DT  | MIAMI FL           | 0.0      | CP     | BPCDT       | -19990706KG  |
| 46   | WHFT-DT  | MIAMI FL           | 0.0      | PLN    | DTVPLN      | -DTVP1257    |
| 46   | WTVK     | NAPLES FL          | 183.8    | CP     | BPCT        | -19991123AGQ |
| 47   | WAMI-DT  | HOLLYWOOD FL       | 2.1      | APP    | BMPCDT      | -20011022AAN |
| 47   | WYHS-DT  | HOLLYWOOD FL       | 4.6      | PLN    | DTVPLN      | -DTVP1288    |
| 47   | WAMI-DT  | HOLLYWOOD FL       | 4.5      | CP     | BPCDT       | -19981030KF  |
| 49   | WFGC     | PALM BEACH FL      | 66.3     | CP     | BPCDT       | -19991028ABC |
| 49   | WFGC-DT  | PALM BEACH FL      | 85.7     | PLN    | DTVPLN      | -DTVP1347    |
| 52   | WSCV-DT  | FORT LAUDERDALE FL | 2.1      | CP MOD | BMPCDT      | -20010301ABC |
| 52   | WSCV-DT  | FORT LAUDERDALE FL | 4.6      | PLN    | DTVPLN      | -DTVP1432    |
| 59   | WHDT-DT  | STUART FL          | 82.1     | CP     | BPCDT       | -19960920LH  |
| 60   | 960920YT | SEBRING FL         | 209.0    | APP    | BPCT        | -19960920YT  |
| 43   | WINQ-CA  | Palm Beach FL      | 114.8    | CPM    | CUR         | -PROPOSED    |

Proposed station is beyond the site to  
nearest cell evaluation distance

#####

Analysis of Interference to Affected Station 25

# NTSC Baseline Analysis

| Channel | Call | City/State         | Application | Ref. No.  |
|---------|------|--------------------|-------------|-----------|
| 51      | WSCV | FORT LAUDERDALE FL | DTVPLN      | -NPLN0277 |

## Stations Potentially Affecting This Station

| Chan | Call    | City/State         | Dist(km) | Status | Application | Ref. No. |
|------|---------|--------------------|----------|--------|-------------|----------|
| 44   | WPPB-DT | BOCA RATON FL      | 4.6      | PLN    | DTVPLN      | -DTV1193 |
| 47   | WYHS-DT | HOLLYWOOD FL       | 0.0      | PLN    | DTVPLN      | -DTV1288 |
| 49   | WFGC-DT | PALM BEACH FL      | 88.6     | PLN    | DTVPLN      | -DTV1347 |
| 50   | WTVX-DT | FORT PIERCE FL     | 129.7    | PLN    | DTVPLN      | -DTV1373 |
| 51   | WTGL-DT | COCOA FL           | 269.3    | PLN    | DTVPLN      | -DTV1403 |
| 52   | WSCV-DT | FORT LAUDERDALE FL | 0.0      | PLN    | DTVPLN      | -DTV1432 |
| 55   | WPTV-DT | WEST PALM BEACH FL | 69.2     | PLN    | DTVPLN      | -DTV1492 |

|                                     |            |              |     |
|-------------------------------------|------------|--------------|-----|
| Results for: 51N FL FORT LAUDERDALE | DTVPLN     | NPLN0277     | PLN |
|                                     | POPULATION | AREA (sq km) |     |
| within Noise Limited Contour        | 3626790    | 13422.0      |     |
| not affected by terrain losses      | 3626790    | 13422.0      |     |
| lost to NTSC IX                     | 0          | 0.0          |     |
| lost to additional IX by ATV        | 179        | 4.0          |     |
| lost to all IX                      | 179        | 4.0          |     |

## Analysis of current record

| Channel | Call | City/State         | Application | Ref. No.     |
|---------|------|--------------------|-------------|--------------|
| 51      | WSCV | FORT LAUDERDALE FL | BMPCT       | -20010301ABZ |

## Stations Potentially Affecting This Station

| Chan | Call    | City/State         | Dist(km) | Status | Application | Ref. No.     |
|------|---------|--------------------|----------|--------|-------------|--------------|
| 44   | WPPB-DT | BOCA RATON FL      | 2.1      | CP     | BPEDT       | -19991028ACM |
| 44   | WPPB-DT | BOCA RATON FL      | 2.1      | PLN    | DTVPLN      | -DTV1193     |
| 47   | WAMI-DT | HOLLYWOOD FL       | 0.0      | APP    | BMPCDT      | -20011022AAN |
| 47   | WYHS-DT | HOLLYWOOD FL       | 2.7      | PLN    | DTVPLN      | -DTV1288     |
| 47   | WAMI-DT | HOLLYWOOD FL       | 2.6      | CP     | BPCDT       | -19981030KF  |
| 49   | WFGC    | PALM BEACH FL      | 67.0     | CP     | BPCDT       | -19991028ABC |
| 49   | WFGC-DT | PALM BEACH FL      | 86.4     | PLN    | DTVPLN      | -DTV1347     |
| 50   | WTVX    | FORT PIERCE FL     | 127.8    | CP     | BPCDT       | -19991027ABY |
| 50   | WTVX-DT | FORT PIERCE FL     | 127.8    | PLN    | DTVPLN      | -DTV1373     |
| 51   | WTGL-DT | COCOA FL           | 267.7    | PLN    | DTVPLN      | -DTV1403     |
| 52   | WSCV-DT | FORT LAUDERDALE FL | 0.0      | CP MOD | BMPCDT      | -20010301ABC |
| 52   | WSCV-DT | FORT LAUDERDALE FL | 2.7      | PLN    | DTVPLN      | -DTV1432     |
| 55   | WPTV-DT | WEST PALM BEACH FL | 67.1     | PLN    | DTVPLN      | -DTV1492     |
| 55   | WPTV    | WEST PALM BEACH FL | 67.1     | CP MOD | BMPCDT      | -20011025ABN |
| 59   | WHDT-DT | STUART FL          | 83.1     | CP     | BPCDT       | -19960920LH  |
| 43   | WINQ-CA | Palm Beach FL      | 115.6    | CPM    | CUR         | -PROPOSED    |

Proposed station is beyond the site to  
nearest cell evaluation distance

#####

## Analysis of Interference to Affected Station 26

Analysis of current record

| Channel | Call | City/State         | Application | Ref. No.    |
|---------|------|--------------------|-------------|-------------|
| 51      | WSCV | FORT LAUDERDALE FL | BLCT        | -19891130KJ |

Stations Potentially Affecting This Station

| Chan | Call    | City/State         | Dist(km) | Status | Application | Ref. No.     |
|------|---------|--------------------|----------|--------|-------------|--------------|
| 44   | WPPB-DT | BOCA RATON FL      | 4.6      | CP     | BPEDT       | -19991028ACM |
| 44   | WPPB-DT | BOCA RATON FL      | 4.6      | PLN    | DTVPLN      | -DTVP1193    |
| 47   | WAMI-DT | HOLLYWOOD FL       | 2.7      | APP    | BMPCDT      | -20011022AAN |
| 47   | WYHS-DT | HOLLYWOOD FL       | 0.0      | PLN    | DTVPLN      | -DTVP1288    |
| 47   | WAMI-DT | HOLLYWOOD FL       | 0.1      | CP     | BPCDT       | -19981030KF  |
| 49   | WFGC    | PALM BEACH FL      | 69.1     | CP     | BPCDT       | -19991028ABC |
| 49   | WFGC-DT | PALM BEACH FL      | 88.6     | PLN    | DTVPLN      | -DTVP1347    |
| 50   | WTVX    | FORT PIERCE FL     | 129.7    | CP     | BPCDT       | -19991027ABY |
| 50   | WTVX-DT | FORT PIERCE FL     | 129.7    | PLN    | DTVPLN      | -DTVP1373    |
| 51   | WTGL-DT | COCOA FL           | 269.3    | PLN    | DTVPLN      | -DTVP1403    |
| 52   | WSCV-DT | FORT LAUDERDALE FL | 2.7      | CP MOD | BMPCDT      | -20010301ABC |
| 52   | WSCV-DT | FORT LAUDERDALE FL | 0.0      | PLN    | DTVPLN      | -DTVP1432    |
| 55   | WPTV-DT | WEST PALM BEACH FL | 69.2     | PLN    | DTVPLN      | -DTVP1492    |
| 55   | WPTV    | WEST PALM BEACH FL | 69.2     | CP MOD | BMPCDT      | -20011025ABN |
| 59   | WHDT-DT | STUART FL          | 85.5     | CP     | BPCDT       | -19960920LH  |
| 43   | WINQ-CA | Palm Beach FL      | 117.8    | CPM    | CUR         | -PROPOSED    |

Proposed station is beyond the site to  
nearest cell evaluation distance

#####

Analysis of Interference to Affected Station 27

Analysis of current record

| Channel | Call    | City/State    | Application | Ref. No.  |
|---------|---------|---------------|-------------|-----------|
| 43      | WINQ-CA | Palm Beach FL | CUR         | -PROPOSED |

Stations Potentially Affecting This Station

| Chan | Call    | City/State         | Dist(km) | Status | Application | Ref. No.     |
|------|---------|--------------------|----------|--------|-------------|--------------|
| 36   | WFTX    | CAPE CORAL FL      | 162.9    | CP     | BPCT        | -20000912AAI |
| 36   | WPXP-DT | LAKE WORTH FL      | 48.7     | APP    | BMPCDT      | -20020501AAH |
| 36   | WHBI-DT | LAKE WORTH FL      | 34.6     | PLN    | DTVPLN      | -DTVP0952    |
| 36   | WPXP    | LAKE WORTH FL      | 48.7     | CP     | BPCDT       | -19991027ADA |
| 40   | WPPB-TV | BOCA RATON FL      | 114.8    | APP    | BPRM        | -20000328AAE |
| 40   | WPPB-DT | BOCA RATON FL      | 114.8    | APP    | BMPCDT      | -20020201AAY |
| 42   | WXEL-TV | WEST PALM BEACH FL | 50.3     | LIC    | BLET        | -19820625KF  |
| 43   | WBSF    | MELBOURNE FL       | 159.6    | LIC    | BLCT        | -19980422KG  |
| 44   | WPPB-DT | BOCA RATON FL      | 114.8    | CP     | BPEDT       | -19991028ACM |
| 44   | WPPB-DT | BOCA RATON FL      | 114.8    | PLN    | DTVPLN      | -DTVP1193    |
| 45   | WHFT-TV | MIAMI FL           | 114.8    | LIC    | BLCT        | -19951208KF  |
| 46   | WHFT-DT | MIAMI FL           | 114.8    | CP     | BPCDT       | -19990706KG  |
| 46   | WHFT-DT | MIAMI FL           | 114.8    | PLN    | DTVPLN      | -DTVP1257    |
| 47   | WAMI-DT | HOLLYWOOD FL       | 115.6    | APP    | BMPCDT      | -20011022AAN |
| 47   | WYHS-DT | HOLLYWOOD FL       | 117.8    | PLN    | DTVPLN      | -DTVP1288    |
| 47   | WAMI-DT | HOLLYWOOD FL       | 117.6    | CP     | BPCDT       | -19981030KF  |



|    |         |                    |       |        |        |              |
|----|---------|--------------------|-------|--------|--------|--------------|
| 50 | WTVX    | FORT PIERCE FL     | 23.4  | CP     | BPCDT  | -19991027ABY |
| 50 | WTVX-DT | FORT PIERCE FL     | 23.4  | PLN    | DTVPLN | -DTVP1373    |
| 51 | WSCV    | FORT LAUDERDALE FL | 115.6 | CP MOD | BMPCT  | -20010301ABZ |
| 57 | NEW     | BOYNTON BEACH FL   | 50.3  | APP    | BPRM   | -20000914AAV |

Total scenarios = 1

Result key: 2  
 Scenario 1 Affected station 27  
 Before Analysis

|                                |            |              |     |
|--------------------------------|------------|--------------|-----|
| Results for: 43N FL Palm Beach | CUR        | PROPOSED     | CPM |
|                                | POPULATION | AREA (sq km) |     |
| within Noise Limited Contour   | 400819     | 2519.1       |     |
| not affected by terrain losses | 400706     | 2515.1       |     |
| lost to NTSC IX                | 350712     | 2043.5       |     |
| lost to additional IX by ATV   | 0          | 0.0          |     |
| lost to all IX                 | 350712     | 2043.5       |     |

Potential Interferring Stations Included in above Scenario 1

|   |      |            |          |  |
|---|------|------------|----------|--|
| 42N FL WEST PALM BEACH                          | BLET | 19820625KF | LIC      |  |
| *Percent new DTV interference without proposal: | 0.0  | CUR        | PROPOSED |  |
| *Percent new DTV interference with proposal:    | 0.0  | CUR        | PROPOSED |  |

#####

FINISHED FINISHED FINISHED FINISHED FINISHED FINISHED

1