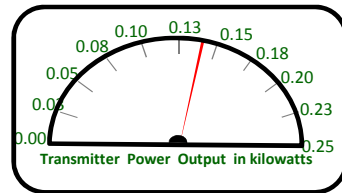
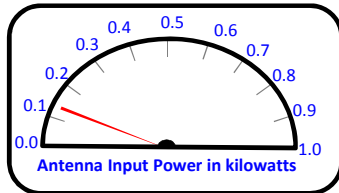


# TPO Calculation Summary

## Main Antenna Operation

Call letters: W245CN  
 City of License: Griffin, GA  
 Frequency: CH245D (96.9 MHz)  
 File No: BPFT-20150408ACQ  
 Facility ID: 81988  
 Applicant: Bible Broadcasting Network, Inc.



Operating Effective Radiated Power (ERP): 0.055 kW

Antenna Make: Nicom USA Inc.

Antenna Model: BKG77/1-DA

No of Elements: One (1)

Antenna COR AGL: 24 meters AGL

Antenna COR AMSL: 317 meters AMSL

Max Input Power: 1.0 kW

Power Gain: 0.47

$\text{Log}[\text{power gain}] * 10 = \text{Antenna Gain: } -3.279 \text{ dB}$

Calculated Antenna Input Power: 0.117 kW

Transmitter Make/Model: Crown 250

Transmitter Rated Power: 0.3 kW

### System Loss Info:

Description	Component Make/Model	Length	Loss
1/2 Inch End Connector	Generic (1 @0.02 dB each)		-0.020 dB
Main Antenna Feedline (Tower)	Andrew 1/2" LDF4-50A (Foam) (0.650 dB/100 ft)	126 ft	-0.819 dB
1/2 Inch End Connector	Generic (1 @0.02 dB each)		-0.020 dB

TOTAL SYSTEM GAIN/LOSS: -4.138 dB

$1 / [10^{(-4.138/10)}] = \text{CALCULATED TRANSMITTER POWER OUTPUT: } 0.143 \text{ kW}$