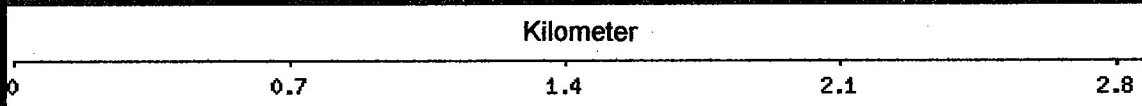
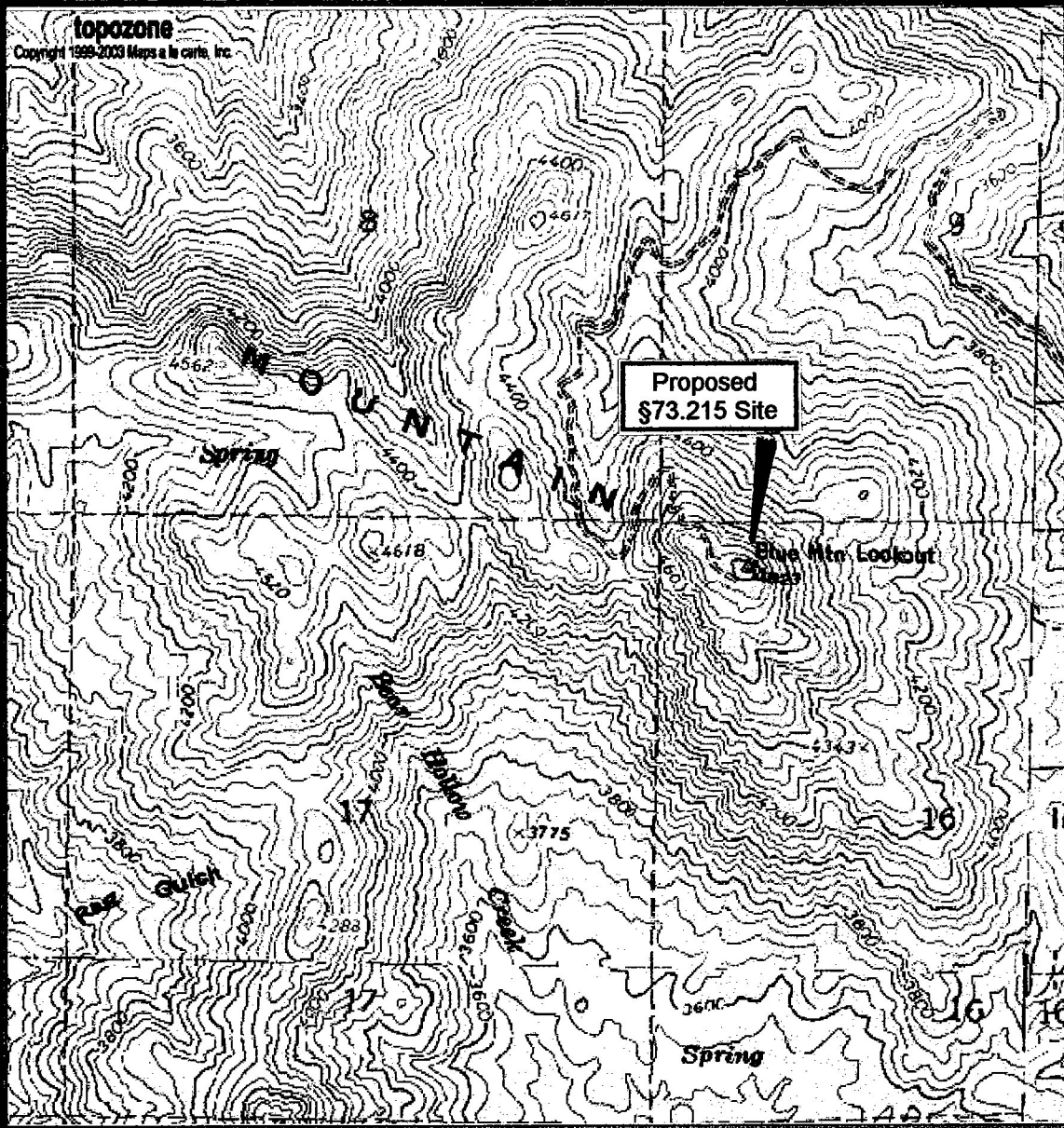


Map Source
USGS 1:24,000
White River, CA

ENG. EXHIBIT I

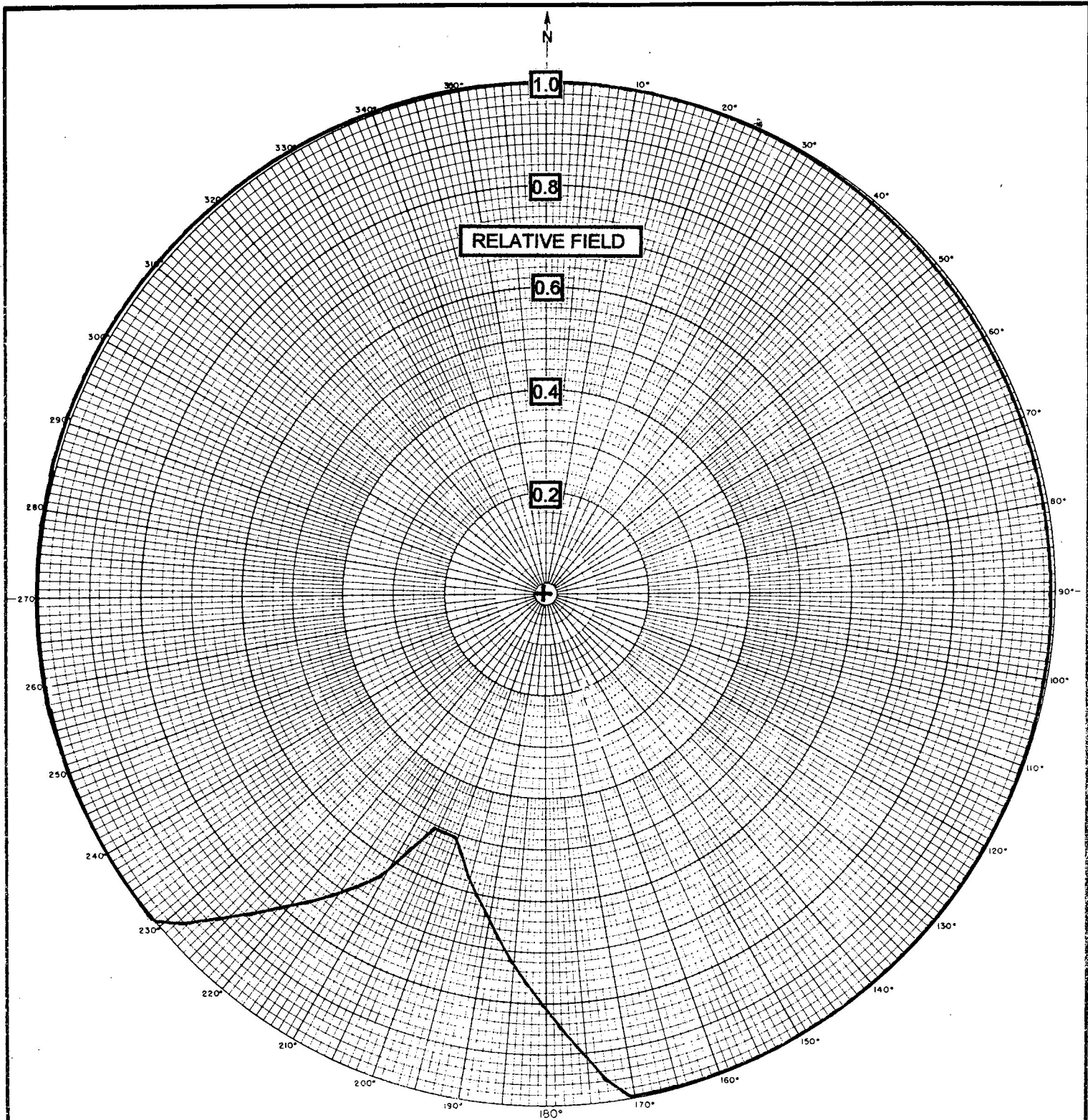
KQMA – Porterville, CA
**FULLY SPACED TRANSMITTER
SITE PER \$73.207**
Sept. 2005 Lieberman & Walisko



Map Source
USGS 1:24,000
White River, CA

ENG. EXHIBIT II

KQMA – Porterville, CA
**PROPOSED TRANSMITTER
SITE PER \$73.215**
Sept. 2005 Lieberman & Walisko



ORIENTATION OF ANTENNA

N 203° E

ENG. EXHIBIT III

KQMA – Porterville, CA

**RELATIVE FIELD ENVELOPE
HORIZONTAL PLANE**

Sept. 2005

Lieberman & Walisko

LIEBERMAN & WALISKO
CONSULTING TELECOMMUNICATIONS ENGINEERS
701 YEATMAN PARKWAY
SILVER SPRING, MD 20902

KMQA - Porterville, CA

Eng. Ex IV

CALCULATED RADIATION VALUES

BEAR. (DEG)	ANT. FACT.	ANT. GAIN (dB)	CALCULATED RAD. HORIZONTAL PLANE		CALCULATED RAD. MAIN BEAM	
			(ERP)	(dBk)	(ERP)	(dBk)
0	1.000	1.14	1.96	2.92	1.96	2.92
10	1.000	1.14	1.96	2.92	1.96	2.92
20	1.000	1.14	1.96	2.92	1.96	2.92
30	1.000	1.14	1.96	2.92	1.96	2.92
40	1.000	1.14	1.96	2.92	1.96	2.92
50	1.000	1.14	1.96	2.92	1.96	2.92
60	1.000	1.14	1.96	2.92	1.96	2.92
70	1.000	1.14	1.96	2.92	1.96	2.92
80	1.000	1.14	1.96	2.92	1.96	2.92
90	1.000	1.14	1.96	2.92	1.96	2.92
100	1.000	1.14	1.96	2.92	1.96	2.92
110	1.000	1.14	1.96	2.92	1.96	2.92
120	1.000	1.14	1.96	2.92	1.96	2.92
130	1.000	1.14	1.96	2.92	1.96	2.92
140	1.000	1.14	1.96	2.92	1.96	2.92
150	1.000	1.14	1.96	2.92	1.96	2.92
160	1.000	1.14	1.96	2.92	1.96	2.92
170	1.000	1.14	1.96	2.92	1.96	2.92
180	0.805	-0.74	1.27	1.04	1.27	1.04
190	0.640	-2.74	0.80	-0.96	0.80	-0.96
200	0.508	-4.74	0.51	-2.96	0.51	-2.96
210	0.640	-2.74	0.80	-0.96	0.80	-0.96
220	0.805	-0.74	1.27	1.04	1.27	1.04
230	1.000	1.14	1.96	2.92	1.96	2.92
240	1.000	1.14	1.96	2.92	1.96	2.92
250	1.000	1.14	1.96	2.92	1.96	2.92
260	1.000	1.14	1.96	2.92	1.96	2.92
270	1.000	1.14	1.96	2.92	1.96	2.92
280	1.000	1.14	1.96	2.92	1.96	2.92
290	1.000	1.14	1.96	2.92	1.96	2.92
300	1.000	1.14	1.96	2.92	1.96	2.92
310	1.000	1.14	1.96	2.92	1.96	2.92
320	1.000	1.14	1.96	2.92	1.96	2.92
330	1.000	1.14	1.96	2.92	1.96	2.92
340	1.000	1.14	1.96	2.92	1.96	2.92
350	1.000	1.14	1.96	2.92	1.96	2.92