

## CONSOLIDATED ENGINEERING EXHIBIT

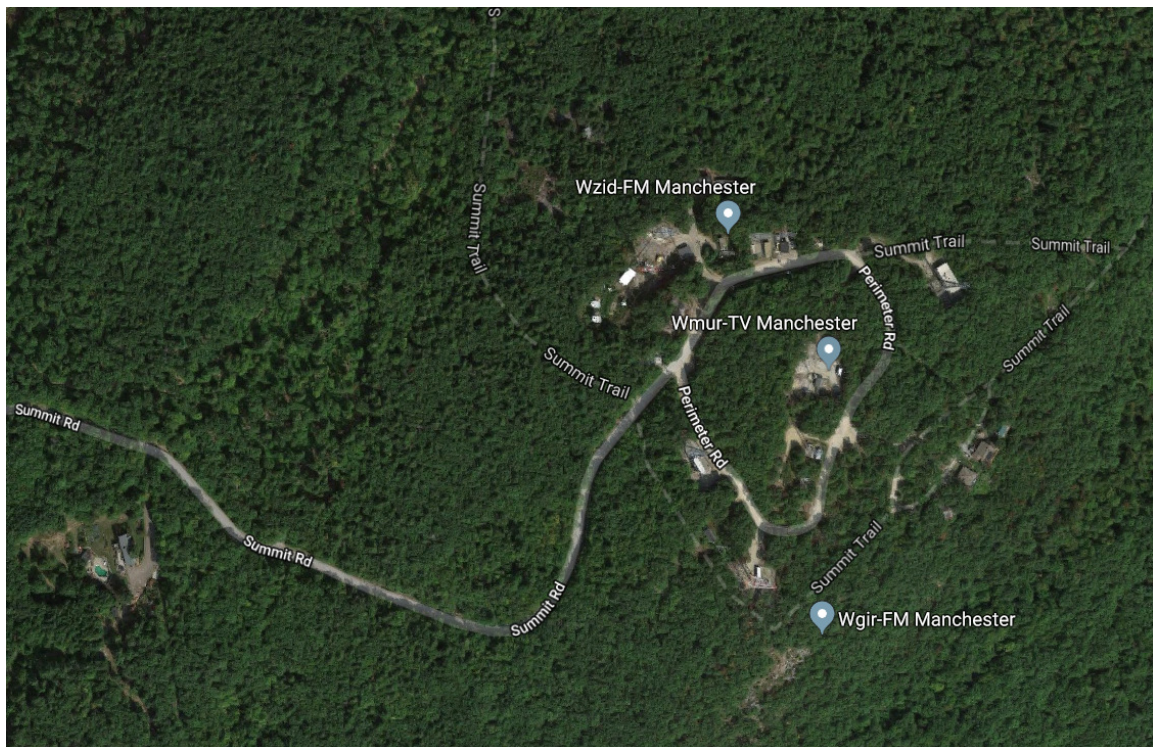
NEW FX, FIN #202248

May 2018

**Figure 1** shows that the 60 dBu contour of the proposed translator is fully contained within a 25-mile radius of the AM parent station, WDER.

**Figures 2 and 3** demonstrate that the proposed translator will create no interference to any stations on co-, first-, second-, third-adjacent or IF frequencies, except with respect to second-adjacent WXRV, channel 223, as shown in **Figure 4**. (All contours shown in this application are based on GLOBE terrain data, except at distances less than 1.5 km, which were calculated on a "free space" basis.)

WXRV delivers 62.0 dBu at the proposed translator site. As **Figure 5** illustrates, the relevant interfering contour of 102.0 dBu covers only the wooded slope of Mount Uncanoonuc. As shown in the aerial image below, the only structures at the peak of the mountain are unmanned transmitter buildings.



Under 74.1204(d), it is thus shown that there is no population in the interference area.

Figure 1 -- Proposed Coverage Contour

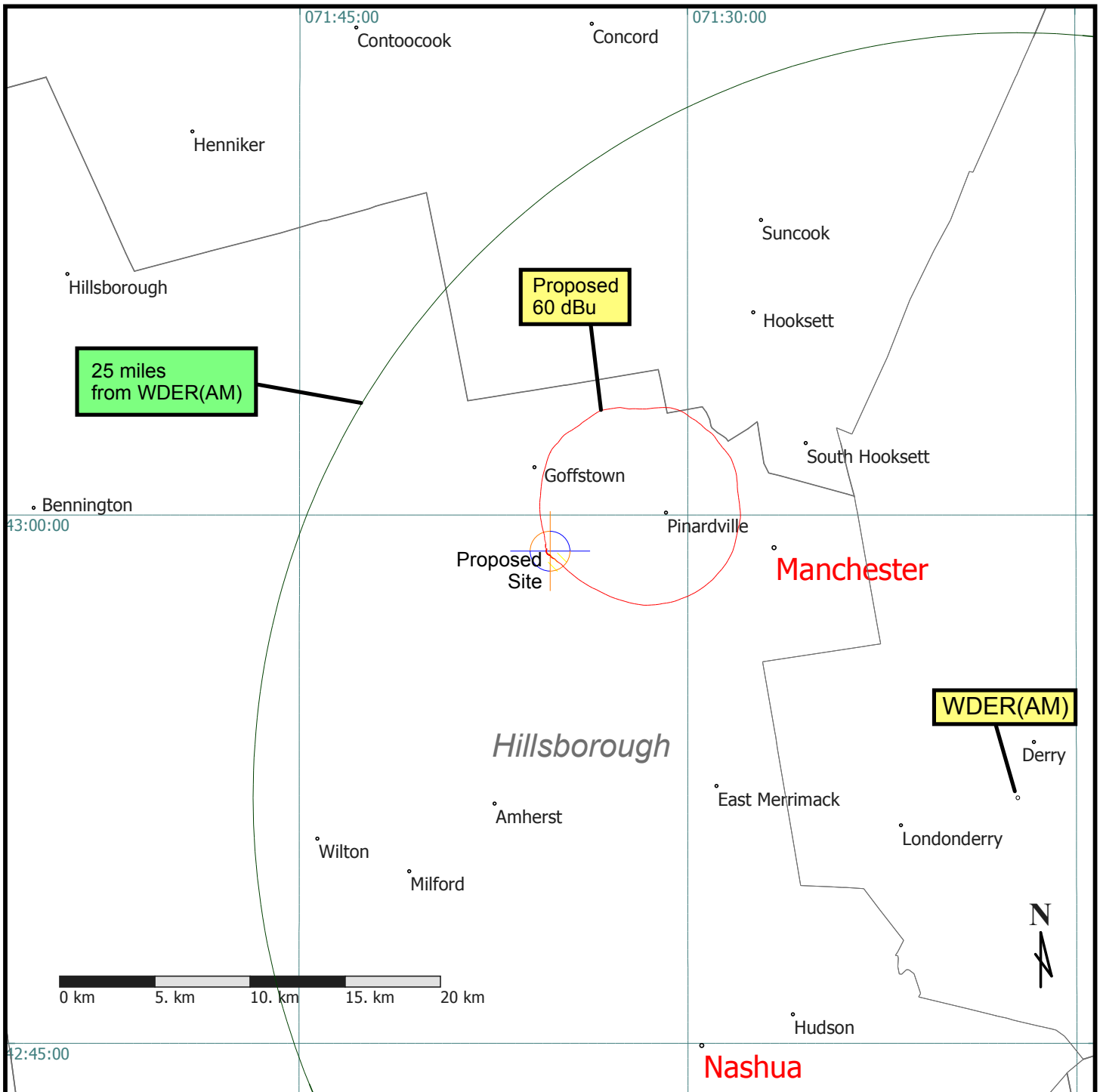


Figure 2 -- Co-Channel Interference Contour

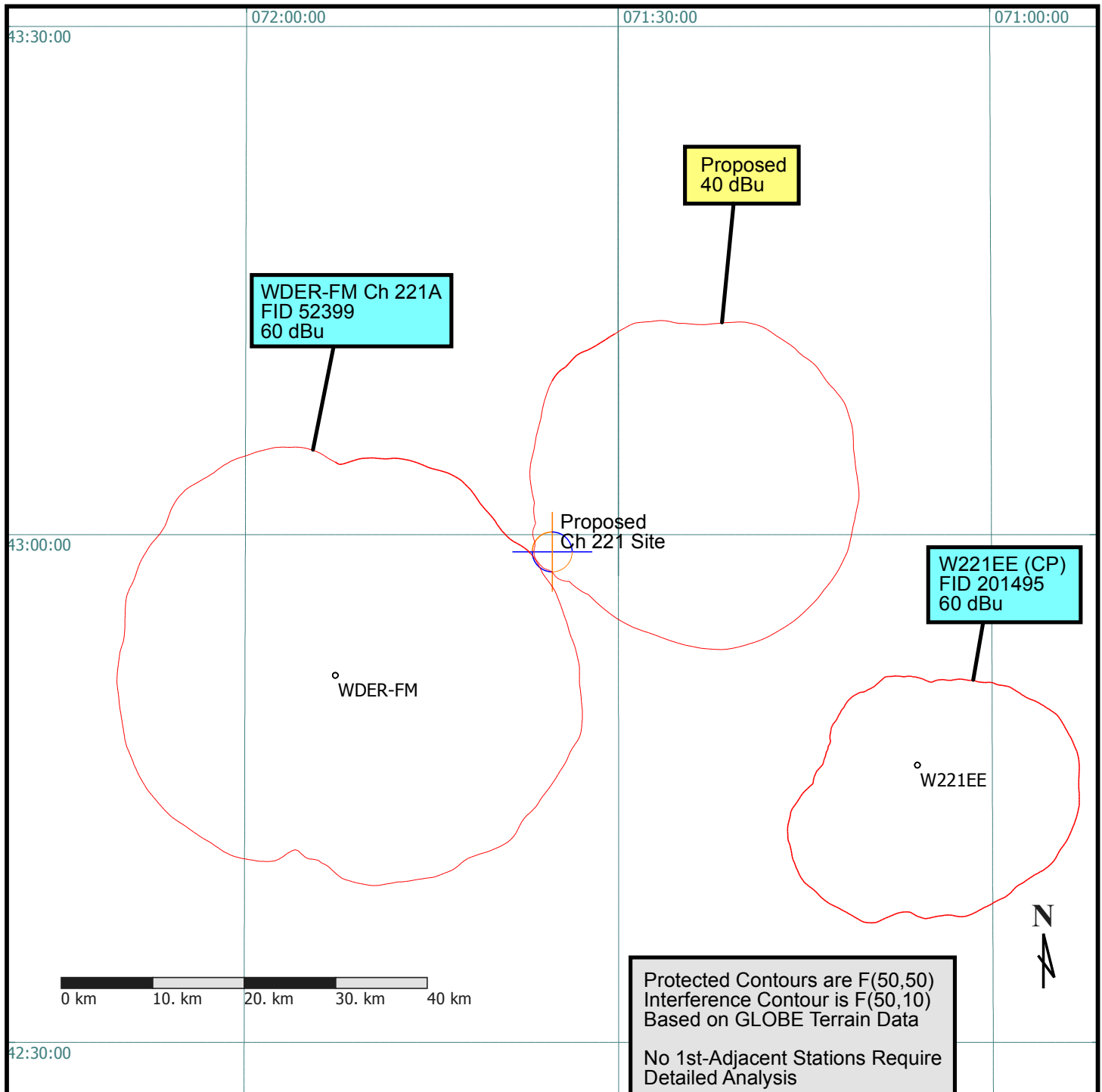


Figure 3 -- Detail of Clearance from WDER-FM

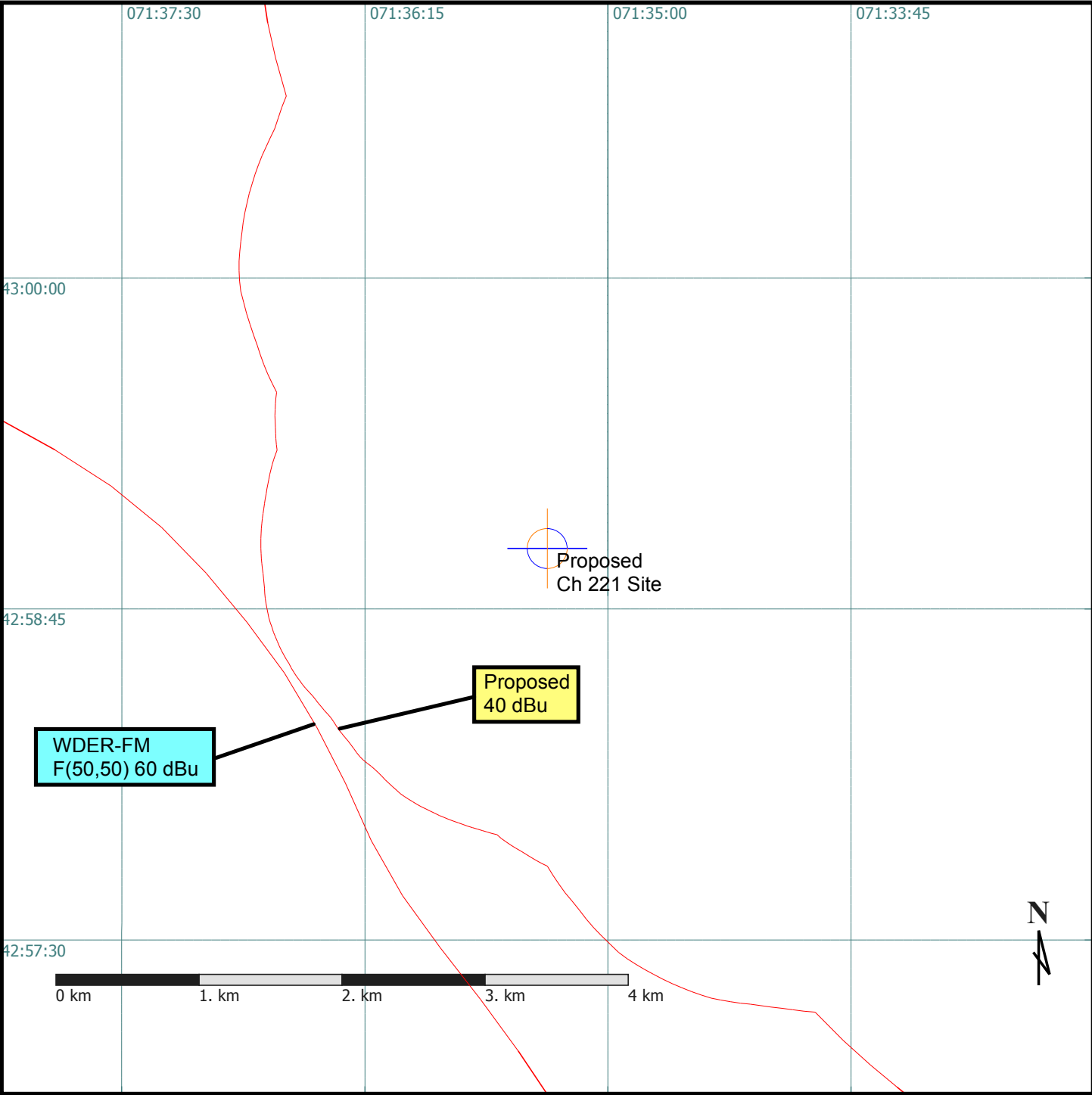


Figure 4 -- 2nd- and 3rd- Adjacent Interference Analysis

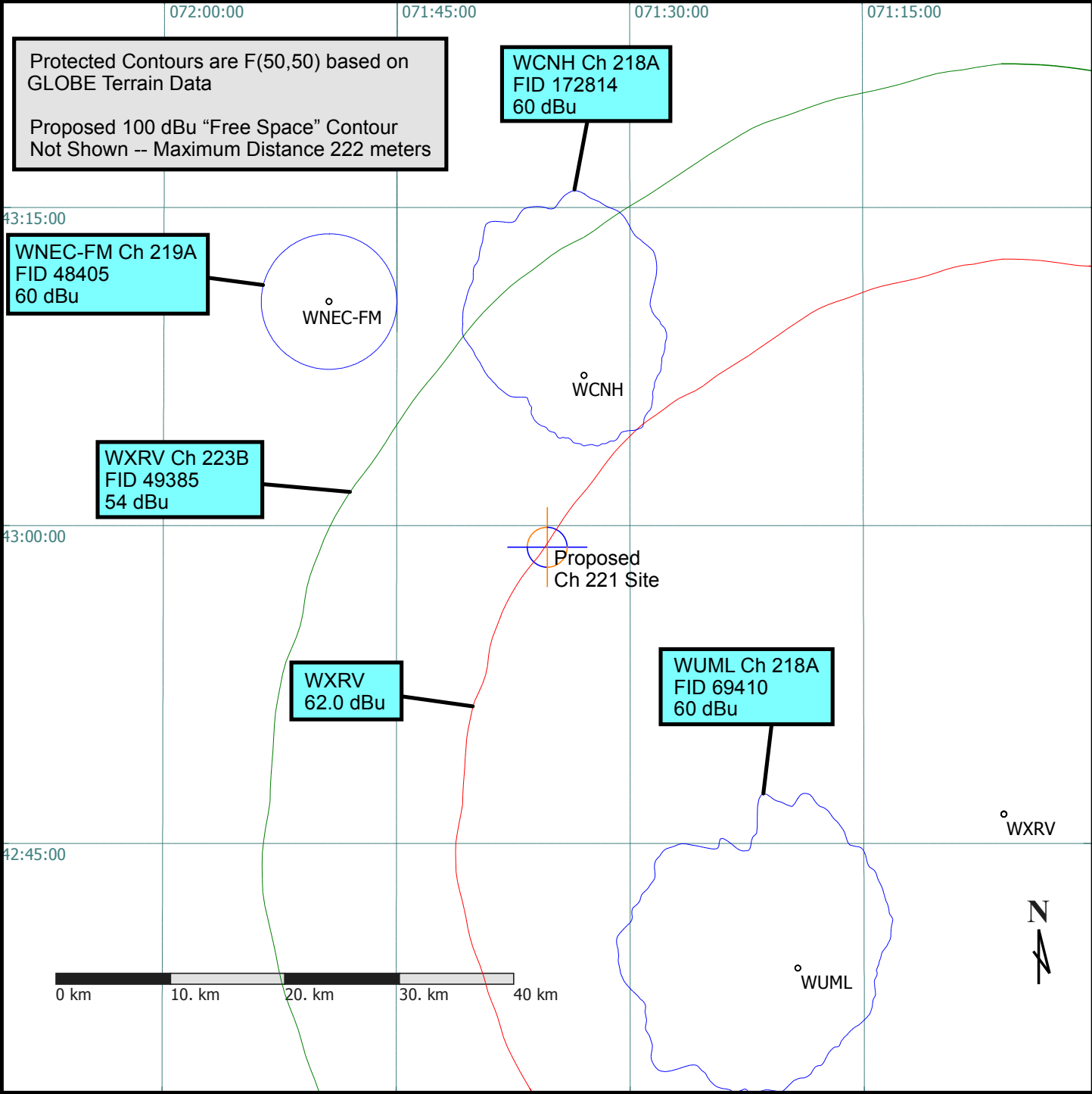




Figure 5

