

**K280BD Minor Modification
Channel 277D
Allocation Study
August 2005**

The attached spacing study shows the spacing between the proposed fill-in translator site and the location of cochannel and adjacent channel stations and proposals. This study was made with the Commission's Class A spacing requirements, and individual situations were examined to determine the lack of prohibited contour overlap per the requirements of §74.1204 of the Rules. The attached allocation study maps demonstrate compliance with the Commission's Rules for protection of FM broadcast stations and FM translators as outlined in §74.1204.

The proposed transmitter site is located within the 60 dBu contour of second-adjacent-channel station KSJJ 275C1 Redmond. The attached map exhibit depicts the worst-case 100 dBu F(50,10) contour (0.7 km radius) from the proposed translator facility, overlaid on the USGS "Grizzly Mountain" 7.5 minute topographic map. The 100 dBu F(50,10) contour does not overlap any populated areas, encompassing only the transmitter sites at the Grizzly Mountain peak, and the transmitter site access road. Therefore, the proposed translator facility is believed to be in compliance with §74.1204(d) with respect to KSJJ.

The attached spacing study demonstrates compliance with §73.207 of the Commission's Rules regarding spacing restrictions to stations which are 53 or 54 channels removed from the proposed operation. Specifically, the proposed site is located 12 km from K224AT Redmond, to which the spacing requirement is 10 km.

=====

SEARCH PARAMETERS

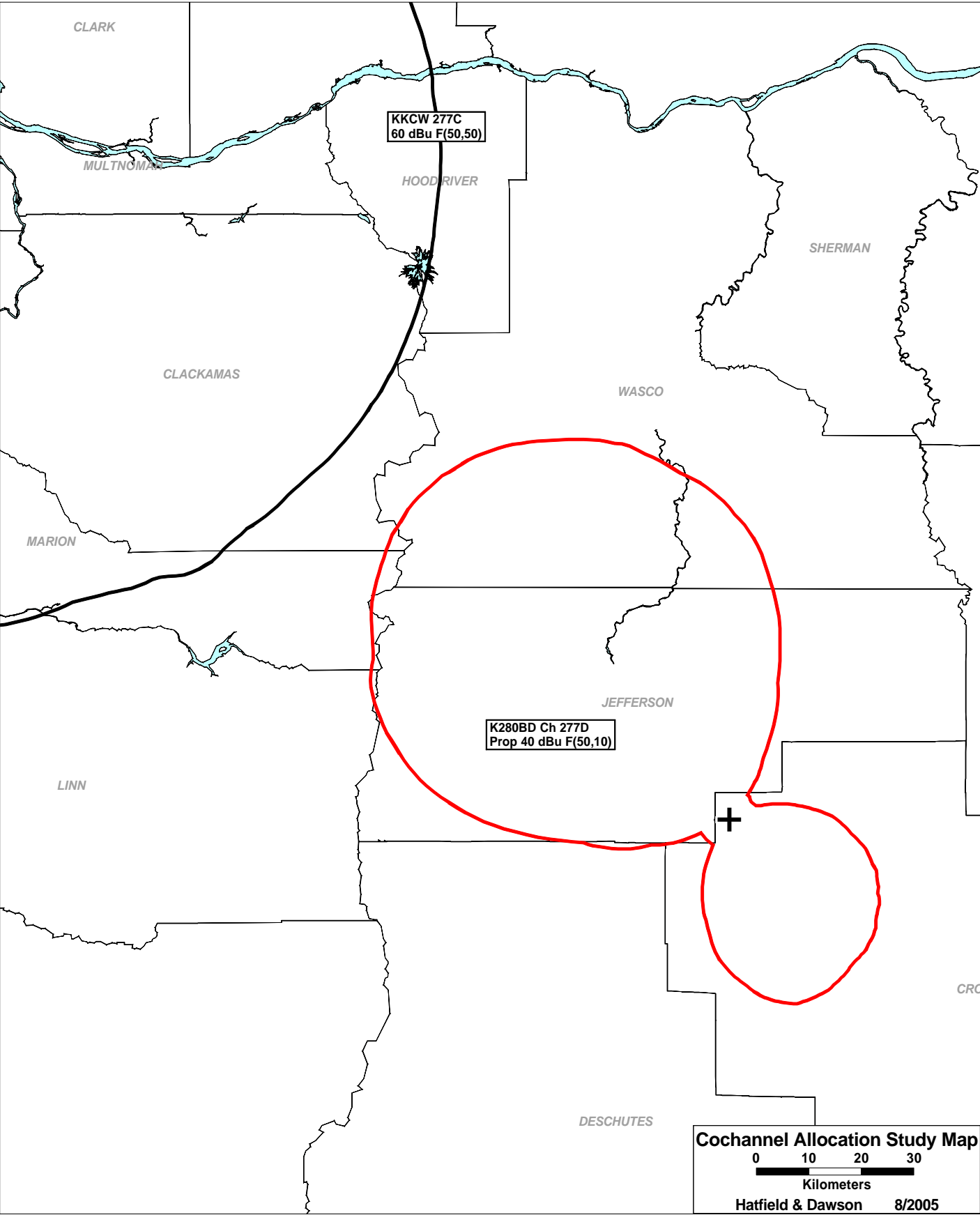
FM Database Date: 050819

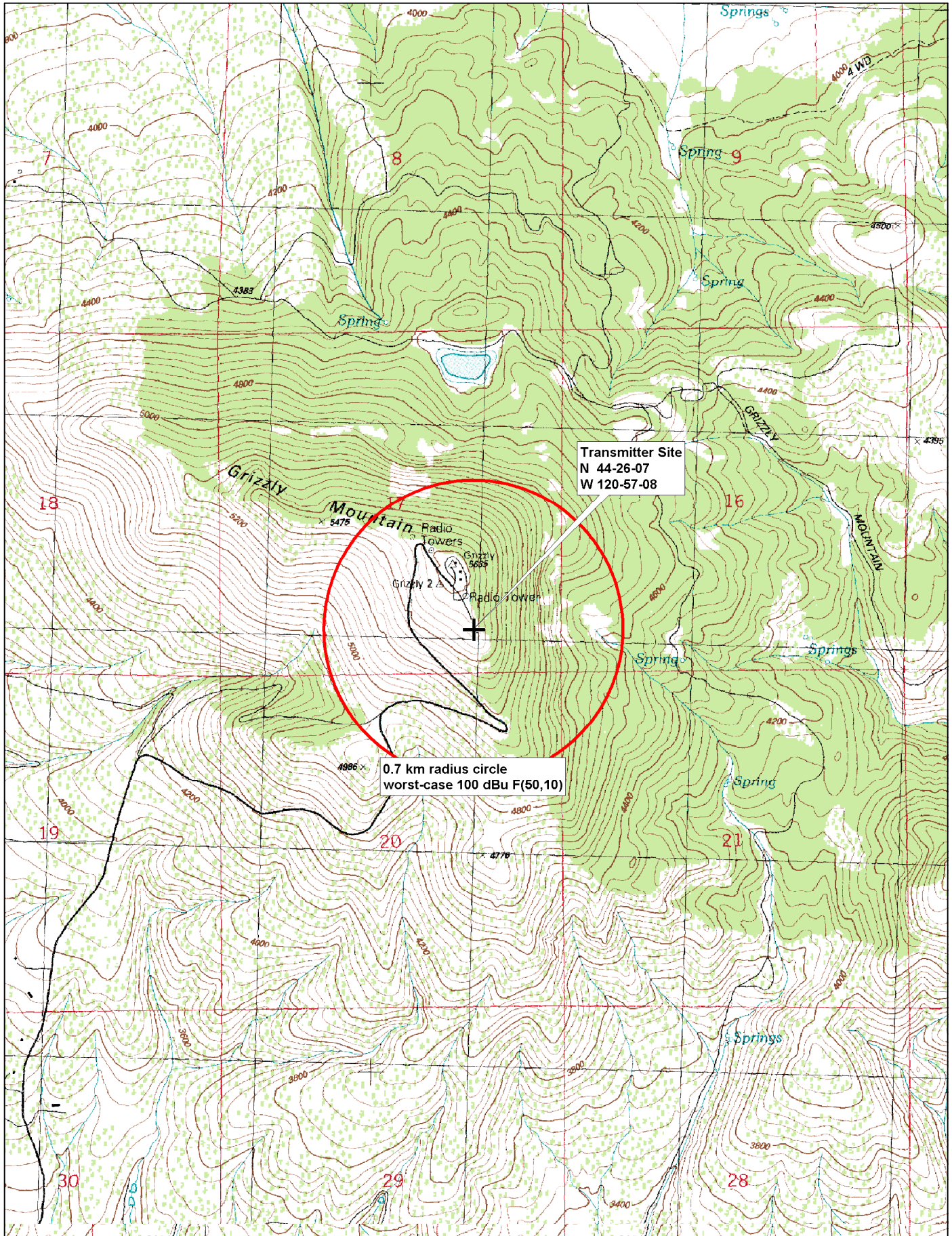
Channel: 277A 103.3 MHz
 Latitude: 44 26 7
 Longitude: 120 57 8
 Safety Zone: 32 km
 Job Title: K280BD MOD TO 277D

Page 1

| Call Status | City St | FCC File No. | Channel Freq. | ERP(kW) HAAT(m) | Latitude Longitude | Bearing deg-True | Dist (km) | Req (km) |
|----------------|------------------|----------------|------------------|--------------------|-----------------------|---------------------|------------------|--------------|
| K224AT LIC | REDMOND OR | BLFT-830505MG | 224D 92.7 | 0.023 635.0 | 44-25-02 121-06-01 | 260.4 | 11.96 1.96 | 10 CLEAR |
| KSJJ LIC | REDMOND OR | BMLH-040702AFK | 275C1 102.9 | 100.000 270.0 | 44-02-49 121-31-50 | 227.1 | 63.22 -11.78 | 75 SHORT |
| KKCW LIC | BEAVERTON OR | BLH-011214AAF | 277C 103.3 | 100.000 470.0 | 45-31-21 122-44-45 | 311.2 | 186.05 -39.95 | 226 SHORT |
| KXPCaux CP | LEBANON OR | BXPH-050506AAH | 279C 103.7 | 0.600 529.0 | 45-00-35 122-20-17 | 300.7 | 127.01 0.00 | 0 AUX |
| KXPC-FM LIC | LEBANON OR | BLH-041222ABK | 279C 103.7 | 90.000 624.0 | 44-34-49 122-30-07 | 278.0 SS | 124.28 29.28 | 95 CLEAR |
| K280BD LIC | PRINEVILLE OR | BLFT-810508IB | 280D 103.9 | 0.045 785.0 | 44-26-05 120-57-06 | 144.5 | 0.08 0.00 | 0 TRANS |

44444 END OF FM SPACING STUDY FOR CHANNEL 277 44444





**K280BD Minor Modification
Channel 277D
NIER Study
August 2005**

Facilities Proposed

The proposed operation will be on Channel 277D (103.3 MHz) with a maximum lobe effective radiated power of 100 Watts. Operation is proposed with an antenna to be mounted on an existing tower atop Grizzly Mountain.

The proposed antenna support structure will not exceed 60.96 meters (200 feet) above ground and does not require notification to the Federal Aviation Administration. Therefore, this structure does not require an Antenna Structure Registration Number.

NIER Study

Section 1.1307(b)(1) of the Commission's Rules exempts FM translators and boosters operating with an effective radiated power of 100 Watts or less from the requirement to submit an Environmental Assessment to determine compliance with FCC specified guidelines for human exposure to radiofrequency radiation. The applicant proposes operation with a maximum lobe effective radiated power of 100 Watts and therefore no calculations have been submitted. Nonetheless, public access to the site is restricted and all station personnel and contractors are required to follow appropriate safety procedures, including turning off the transmitter if necessary, prior to commencing work on the antenna tower.