

Non-Interference Compliance

Regarding Facility id 150849

Channel 220

Description of Exhibit 12 Contents

This exhibit demonstrates that the proposed facility complies with contour overlap and interference protection provisions in all of the applicable rule sections and that this application for a construction permit is in full compliance with 47 C.F.R. § 74.1204.

Let it be noted that should any actual real world interference occur, the applicant acknowledges that it will promptly suspend operation of this translator in accordance with 47 C.F.R. § 74.1203.

Page 2 of this exhibit is an explanation of the method used to demonstrate compliance with contour overlap and interference provisions based on 47 C.F.R. § 74.1204(d), which states:

[A]n application otherwise precluded by this section will be accepted if it can be demonstrated that no actual interference will occur due to intervening terrain, lack of population or such other factors as may be applicable.

Page 3 contains a tabulation of the vertical radiation pattern of the proposed antenna and the minimum ground clearance of the interfering contour based on this pattern.

Page 4 includes a tabulation of the vertical radiation pattern for the proposed antenna provided by the antenna manufacturer.

Page 6 of this exhibit contains the tabulated data from the interference analysis, which shows all stations whose protected contours come within 50 km of the 34 dBμ F(50,10) contour of the proposed translator. These tabulated values were calculated using data from the FCC's CDBS files and 30 arc second terrain data. The column labeled "Adj" shows the number of channels difference between the entry and the proposed translator. The column labeled "Dist" shows the distance in km. The column labeled "Overlap" shows the area of contour overlap in square kilometers.

Page 6 of this exhibit is a portion of a USGS 1:24,000 scale 7.5 minute quadrangle at full scale with the calculated area of interference overlaid. The sheet includes the quadrangle name and measurement scale at the bottom-left corner (note: "Mt" refers to meters). The area of interference was calculated using the free space equation and 120 radials.

Page 7 of this exhibit is a high resolution aerial photo of the vicinity surrounding the proposed translator's tower site provided by the U.S. Geological Survey's National Aerial Photography Program. It has been included to provide clarification of the nature of the buildings in the vicinity.

Note: This application provides 74m (243ft) of ground clearance which more than adequate to clear any buildings in the zone of predicted interference so a lack of population has been demonstrated within the area of interference and this application is therefore in full compliance with 47 C.F.R. § 74.1204.

Compliance with 47 C.F.R. § 74.1204(d)

All authorized second and third adjacent stations with which the proposed translator has contour overlap are tabulated below. Column four show the station's signal level at the proposed translator's tower site, and column five gives the minimum value within the entire standard interfering contour of the proposed translator (100 dBμ for most classes, 94 for class B, 97 for class B1). The minimum second or third adjacent F(50,50) contour within the proposed translator's standard interfering contour was used to calculate the proposed translator's actual "worst-case" interfering contour.

Application_id	File Number	Callsign	Contour at Tower	Min. Contour
201289	BLFT19940727TB	K217BW	108.8	94.9
Minimum F(50,50) Contour of Adjacent Station within Proposed Translator's Standard Interfering Contour				94.9

FCC 02-244 at Section II.A.5 states that "when demonstrating that 'no actual interference will occur due to . . . other factors,' pursuant to Section 74.1204(d), an applicant may use the undesired-to-desired signal ratio method." The undesired-to-desired ratio for second and third adjacent stations required by § 74.1204(a) is 40 dB. Since the minimum protected contour strength within the proposed translator's standard interference contour is **94.9 dBμ**, this makes the proposed translator's worst-case interfering contour **134.9 dBμ**. By the free-space equation, this contour is calculated to extend a maximum of **18.1 m** from the transmit antenna.

The maximum horizontal plane of the interfering contour was calculated for 120 radials and plotted on the pertinent portion of a USGS quadrangle (page 8 of this exhibit). However, the field strength of the proposed translator's antenna varies with angle of depression from horizontal. The antenna relative fields are tabulated on the following page at 5 degree increments, starting at 5 degrees below horizontal. Antenna relative field strength data was provided and certified by the manufacturer of the proposed antenna. Using a free-space calculation that neglects any loss due to reflection, the vertical ground clearance of the proposed translator's interference contour has been tabulated. As shown on the following page, the area of interference clears the tower ground level (TGL) by **74 m** at the lowest point. The applicant has taken into account USGS quadrangles and relevant aerial photography in stating that no structures, except possibly tower support structures, puncture the area of interference. Hence, in accordance with 47 C.F.R. § 74.1204(d) and the clarification provided by the FCC in the decision *Re: Living Way Ministries* (FCC 02-244), a lack of population has been demonstrated within the area of interference and this application is therefore in full compliance with 47 C.F.R. § 74.1204.

Note: This application provides 74m (243ft) of ground clearance which more than adequate to clear any buildings in the zone of predicted interference so a lack of population has been demonstrated within the area of interference and this application is therefore in full compliance with 47 C.F.R. § 74.1204.

Antenna Manufacturer:	NIC
Antenna Model:	BKG77
CORAGL:	82 m
Maximum ERP:	0.205 kW
Interfering Contour:	134.9 dBμ
Max Int. Contour Distance:	18.1 m
Min Ground Clearance:	74 m

Depression Angle Below Horizontal	Antenna Relative Field	ERP (watts)	Distance to Interfering Contour from Antenna (m)	Horizontal Distance of Interfering Contour from Tower (m)	Vertical Clearance of Interfering Contour above TGL (m)
5	.999	204.6	18.0	18.0	80.4
10	.982	197.7	17.7	17.5	78.9
15	.954	186.6	17.2	16.6	77.5
20	.918	172.8	16.6	15.6	76.3
25	.871	155.5	15.7	14.3	75.3
30	.818	137.2	14.8	12.8	74.6
35	.758	117.8	13.7	11.2	74.1
40	.691	97.9	12.5	9.6	74.0
45	.616	77.8	11.1	7.9	74.1
50	.538	59.3	9.7	6.2	74.6
55	.465	44.3	8.4	4.8	75.1
60	.391	31.3	7.1	3.5	75.9
65	.313	20.1	5.7	2.4	76.9
70	.239	11.7	4.3	1.5	77.9
75	.176	6.4	3.2	0.8	78.9
80	.128	3.4	2.3	0.4	79.7
85	.103	2.2	1.9	0.2	80.1
90	.105	2.3	1.9	0.0	80.1
Minimum Clearance above TGL:					74 m



BK077

Vertical	-66	0.297	54	0.479	174	0.468
Values	-63	0.345	57	0.436	177	0.479
-180	0.487	-60	0.391	60	0.391	
-177	0.478	-57	0.436	63	0.345	
-174	0.467	-54	0.479	66	0.297	
-171	0.460	-51	0.523	69	0.253	
-168	0.454	-48	0.568	72	0.211	
-165	0.447	-45	0.616	75	0.176	
-162	0.439	-42	0.661	78	0.145	
-159	0.429	-39	0.706	81	0.120	
-156	0.419	-36	0.745	84	0.105	
-153	0.402	-33	0.783	87	0.100	
-150	0.385	-30	0.818	90	0.105	
-147	0.369	-27	0.852	93	0.118	
-144	0.359	-24	0.881	96	0.134	
-141	0.350	-21	0.910	99	0.151	
-138	0.338	-18	0.934	102	0.168	
-135	0.326	-15	0.954	105	0.185	
-132	0.314	-12	0.972	108	0.202	
-129	0.303	-9	0.987	111	0.219	
-126	0.290	-6	0.999	114	0.236	
-123	0.278	-3	0.999	117	0.252	
-120	0.265	0	1.000	120	0.265	
-117	0.251	3	0.999	123	0.278	
-114	0.236	6	0.999	126	0.290	
-111	0.218	9	0.987	129	0.304	
-108	0.202	12	0.972	132	0.314	
-105	0.185	15	0.954	135	0.327	
-102	0.168	18	0.934	138	0.338	
-99	0.151	21	0.910	141	0.350	
-96	0.134	24	0.881	144	0.360	
-93	0.118	27	0.852	147	0.370	
-90	0.105	30	0.818	150	0.386	
-87	0.100	33	0.783	153	0.403	
-84	0.105	36	0.745	156	0.420	
-81	0.120	39	0.706	159	0.430	
-78	0.145	42	0.661	162	0.440	
-75	0.176	45	0.616	165	0.448	
-72	0.211	48	0.568	168	0.455	
-69	0.253	51	0.523	171	0.461	

Better than SWR

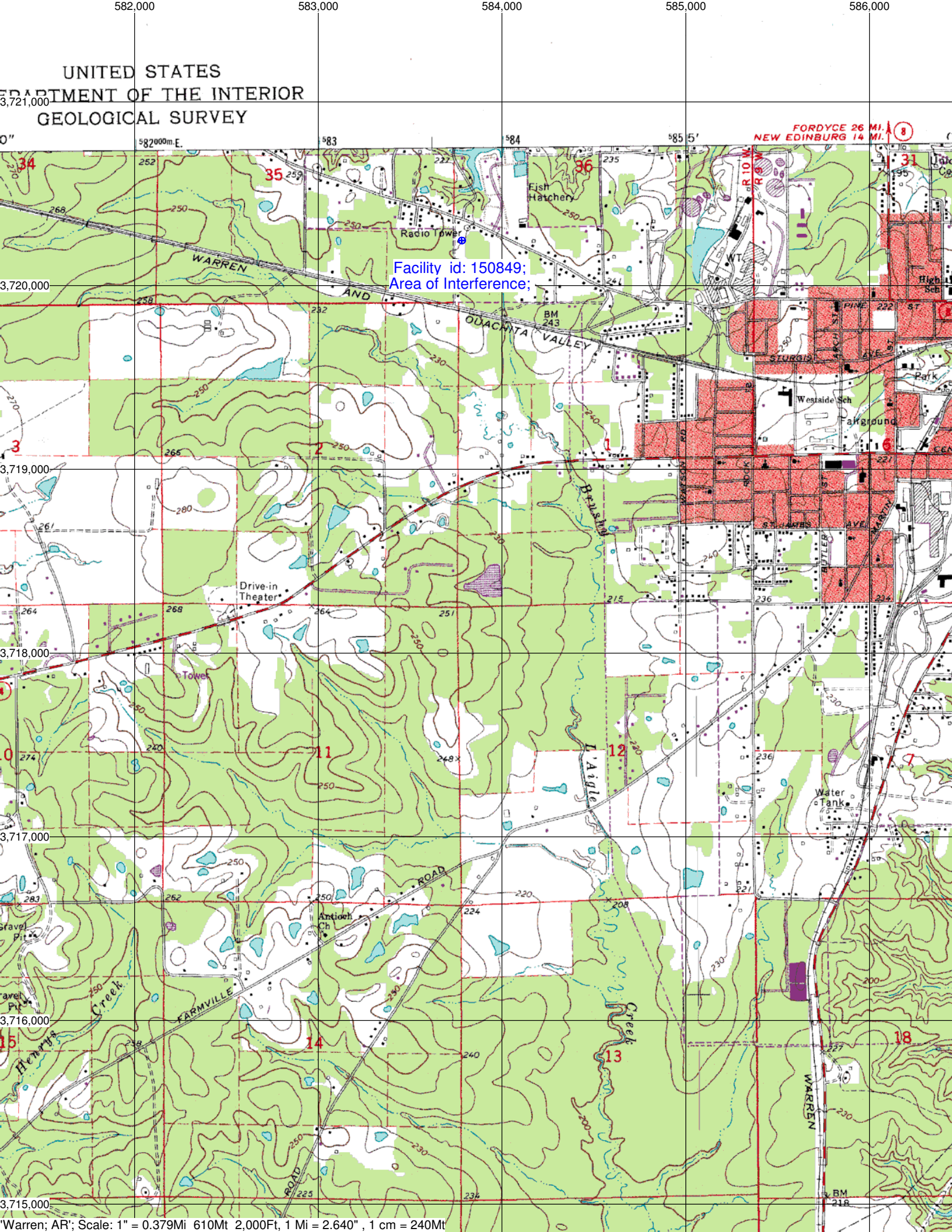
Adjacent Channel Study **For Station K223BM, Facility_id: 150849**

Co-channel through third adjacent:

Application_id	Facility_id	Prefix	ARN	Call	Licensee	Class	City	State	Status	ERP	RCAMSL	Channel	Adj	Dist	Overlap
201289	1605	BLFT	19940727TB	K217BW	AMERICAN FAMILY ASSOCIATION	D	WARREN	AR	LIC	0.25	129	217	3	0.4	1.2233
201261	1580	BLFT	19940726TF	K219BZ	AMERICAN FAMILY ASSOCIATION	D	CROSSETT	AR	LIC	0.25	89	219	1	53.4	0
602490	123008	BNPFT	20000323AAT	NEW	FAITH PLEASES GOD CHURCH CORP.	D	CAMDEN	AR	APP	0.25	175	219	1	66.2	0
494315	123008	BNPFT	20000323AAT	NEW	FAITH PLEASES GOD CHURCH CORP.	D	CAMDEN	AR	APP	0.25	175	219	1	66.2	0
606224	123008	BNPFT	20000323AAT	NEW	FAITH PLEASES GOD CHURCH CORP.	D	CAMDEN	AR	APP	0.115	175	219	1	66.2	0
1116525	122296	BLED	20060302AAH	WLRK	BROADCASTING FOR THE CHALLENGED, INC.	C2	GREENVILLE	MS	LIC	50	136	218	2	67.2	0
87842	13925	BLH	19860501KF	KIPR	CITADEL LICENSE, INC.	C1	PINE BLUFF	AR	LIC	100	371	222	2	83.6	0
634771	142778	BNPFT	20030317ADJ	NEW	BIBLE BROADCASTING NETWORK, INC.	D	GREENVILLE	MS	APP	0.25	90	223	3	85.5	0
535557	85604	BLED	20001120AAG	KAXV	AMERICAN FAMILY ASSOCIATION	C3	BASTROP	LA	LIC	12	168	220	0	88.7	0
636468	144215	BNPFT	20030317JGY	NEW	RADIO ASSIST MINISTRY, INC.	D	GREENVILLE	MS	APP	0.115	182.5	223	3	103.9	0
1039941	92978	BPED	19990318MB	990318MB	HENDERSON STATE UNIVERSITY	A	ARKADELPHIA	AR	CP	0.25	116	220	0	105.4	0
201219	1606	BLFT	19940725TD	K220EF	AMERICAN FAMILY ASSOCIATION	D	ARKADELPHIA	AR	LIC	0.25	152	220	0	109.2	0
285870	34016	BLH	19990603KG	KMYV	KENNETH W. DIEBEL	C3	RAYVILLE	LA	LIC	11.5	166	222	2	127.7	0
153312	24741	BLED	19901005KA	KGRM	GRAMBLING COLLEGE OF LOUISIANA	C2	GRAMBLING	LA	LIC	50	229	218	2	136	0
400220	78630	BLED	19990910AAI	KBDO	AMERICAN FAMILY ASSOCIATION	C1	DES ARC	AR	LIC	56	272	219	1	157	0

Intermediate Frequencies (53 and 54 channels difference):

Application_id	Facility_id	Prefix	ARN	Call	Licensee	Class	City	State	Status	ERP	RCAMSL	Channel	Adj	Dist	Clr
209324	60917	BLH	19950524KE	KWLT	SOUTH ARK BROADCASTING, INC.	C3	NORTH CROSSETT	AR	LIC	25	135	274	54	55.7	43.7
1190364	81678	BLH	20070620ADQ	KAFN	ARKANSAS COUNTY BROADCASTERS, INC.	A	GOULD	AR	LIC	6	101	273	53	63.8	53.8



UNITED STATES
DEPARTMENT OF THE INTERIOR
GEOLOGICAL SURVEY

